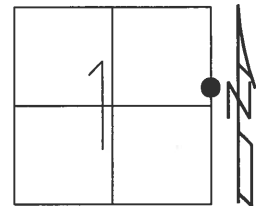


O.D.O.T. DISTRICT 2 SURVEY OFFICE (USE ONLY)

PERSONNEL \_\_\_\_\_ REFERENCE NO. 18 SHEET 35 OF 36  
 NOTES HUSS DATE 4/16/01 ROUTE SR 25  
 H.C. ROUSOS WEATHER CLOUDY/WINDY COUNTY WOOD  
 R.C. VAN DUSEN TEMP. 41° TOWNSHIP LIBERTY  
 DWG BY MILLER PID NO PID SECTION 1  
 T 4 N R 10 E

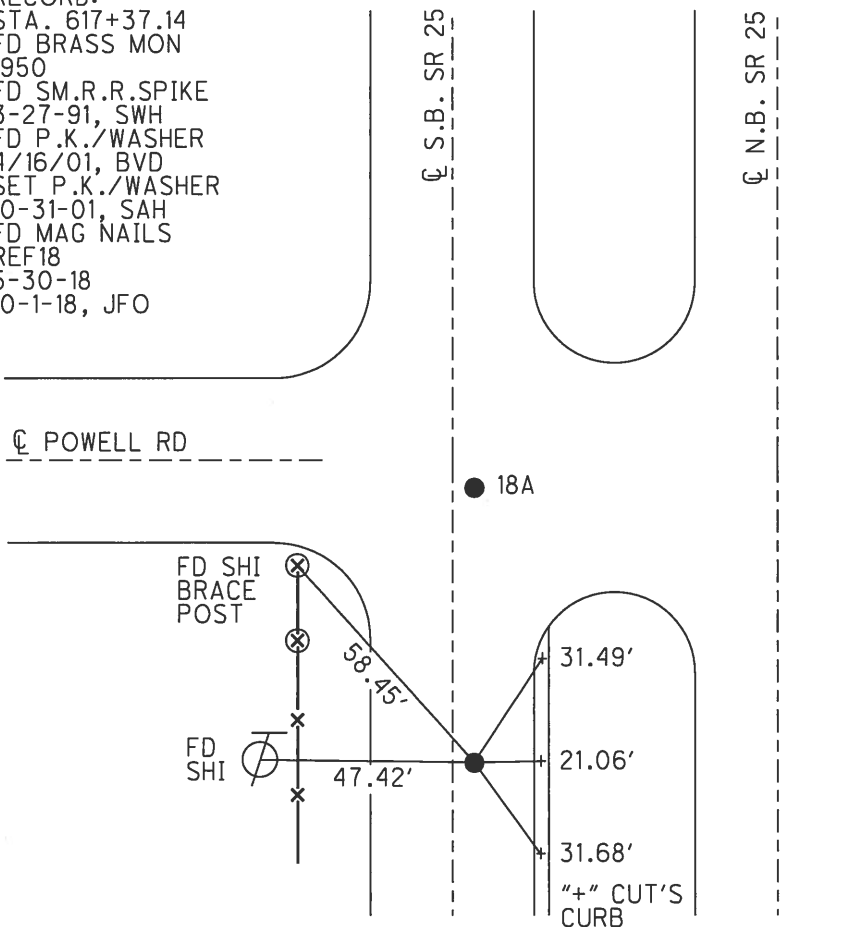
TYPE MONUMENT \_\_\_\_\_ P.K./WASHER  
 ON SURFACE - ~~BELOW~~ ON \_\_\_\_\_  
 OFFSET  $\varnothing$  PAVEMENT 1.7' ~~LT~~ : RT  
13.2' TO LT EDGE PAVEMENT  
 STATION: 374+92



HORZ. DATUM: NAD83(2011) GEOID: NAVD88 2012A  
 GRID: NORTHING: 609712.404 EASTING: 1652586.402

RECORD:  
 STA. 617+37.14  
 FD BRASS MON  
 1950  
 FD SM.R.R.SPIKE  
 3-27-91, SWH  
 FD P.K./WASHER  
 4/16/01, BVD  
 SET P.K./WASHER  
 10-31-01, SAH  
 FD MAG NAILS  
 REF18  
 5-30-18  
 10-1-18, JFO

DIST.18-18A= 68.22'



# O.D.O.T. DISTRICT 2 SURVEY OFFICE

PERSONNEL \_\_\_\_\_

REFERENCE NO. 18

SHEET 21 OF 23

NOTES Huss

H.C. Rousos

R.C. Van Dusen

DATE 4-16-01

WEATHER Cldy - Rain

TEMP. 41°F

ROUTE SR-25

COUNTY Wood

TOWNSHIP Liberty

SECTION 1

T 4 N R 10 E

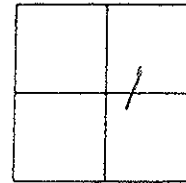
TYPE MONUMENT PK/W (Both Points)

~~ON SURFACE~~ ~~BELOW~~ surface

~~LEFT & RIGHT~~ 1.7' East of S.B. Lane

13.2' to West Edge Pavement

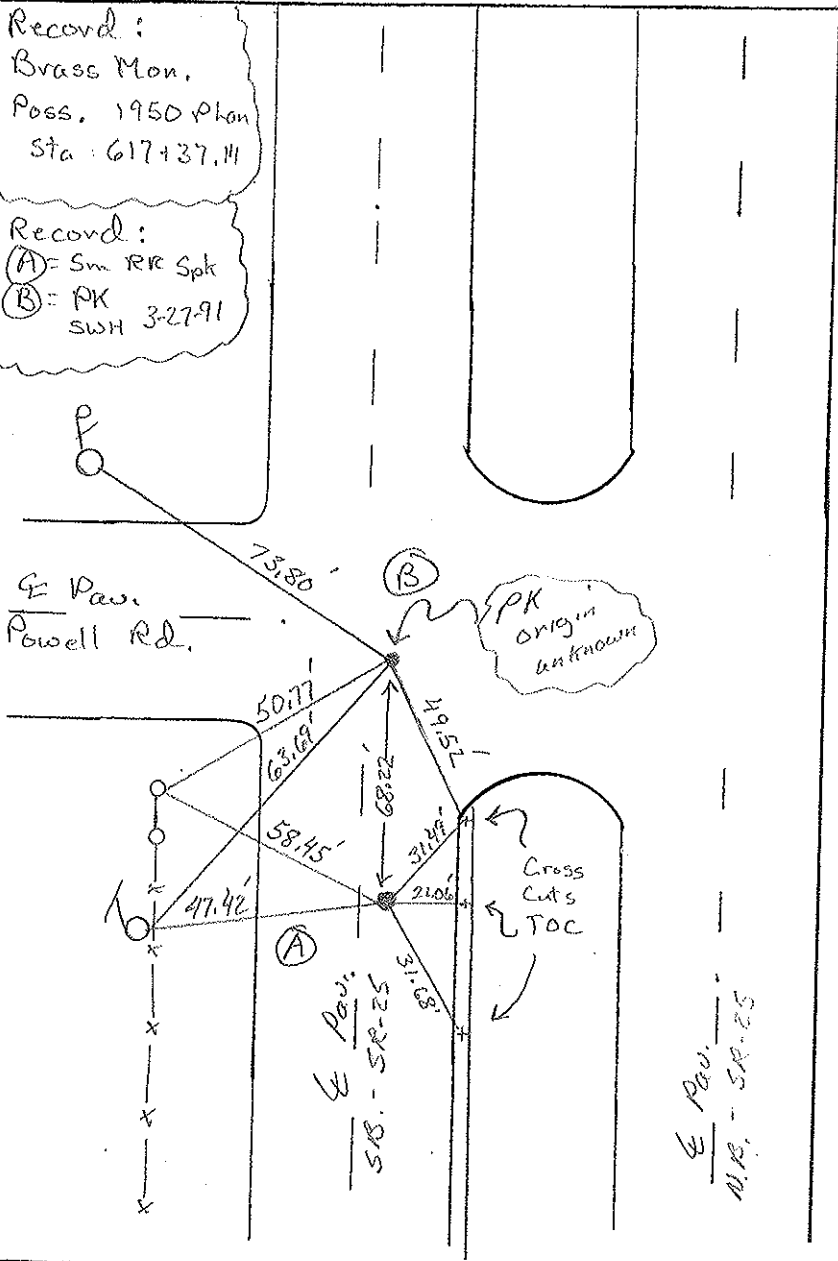
S.L.M. (A) - 374192 (B) - 375160.22



Record:  
Brass Mon.  
Poss. 1950 Plan  
Sta: 617+37.11

Record:  
(A) = Sm RR Spk  
(B) = PK  
SWH 3-27-91

SA PK/W  
10-31-01  
SAH



W Pav.  
S.B. - SR-25

# O.D.O.T. DISTRICT 2 SURVEY OFFICE

PERSONNEL

REFERENCE NO. 18

SHEET 21 OF 23

NOTES HOFFMAN

H.C. LOHRKE

R.C. BARNISEL

DATE 3-27-91

WEATHER P. CLEAR

TEMP. 55°

ROUTE SR 25

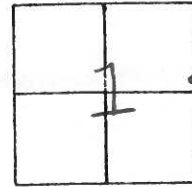
COUNTY WOOD

TOWNSHIP LIBERTY

SECTION 1

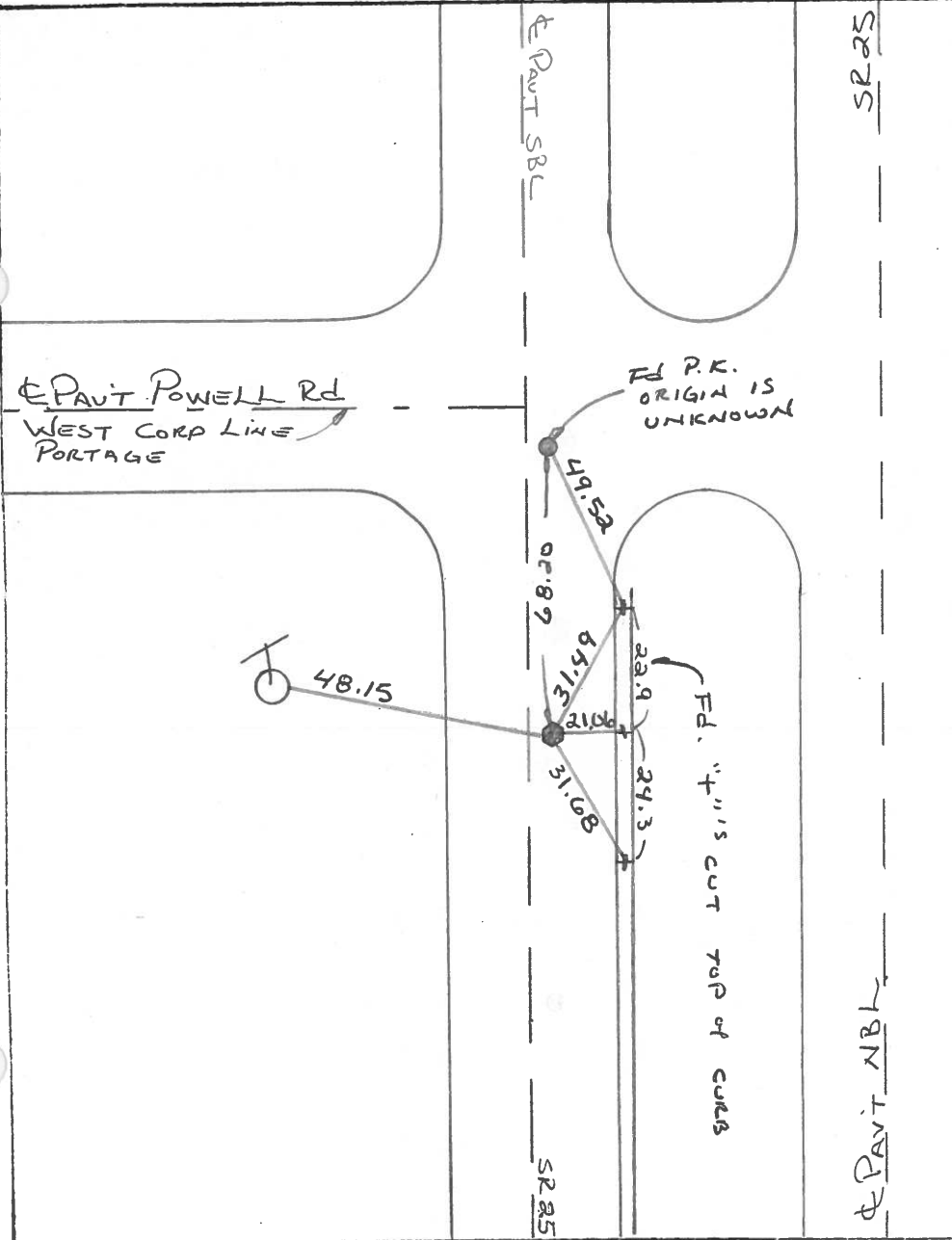
T4 NR 10 E

"A" "B"  
 TYPE MONUMENT SMALL RR SPK & P.K.  
 ON SURFACE - BELOW YES - YES  
 LEFT - & PAV'T. - RIGHT 1.7' EAST of & Part of the  
13.2 TO West EDGE PAVEMENT SOUTHBOUND LANES  
 S.L.M. "A" = 374 +92



Set P.K.'s & Washers  
6-12-91  
MB

RECORD:  
BRASS MONUMENT  
ALSO - POSSIBLE IT IS  
1950 PLAN STATION OF  
617+37.14



OD.O.T. DISTRICT 2 SURVEY OFFICE

SHEET \_\_\_\_\_ OF \_\_\_\_\_

County WOOD <sup>U.S.</sup> ~~S.R.~~ 25

Township LIBERTY

Section 1

T4N, R10E

Personnel BURNSIDE

SMITH

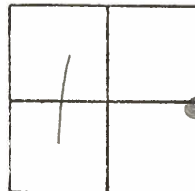
BOWERS

HOLCOMBE

Date <sup>O.K. 5-18-78</sup> 5-24-71

Weather RAIN

Temp. 70°



#18

SHI. END  
FENCE POST



60.66'

SHI.

48.19'

31.83'

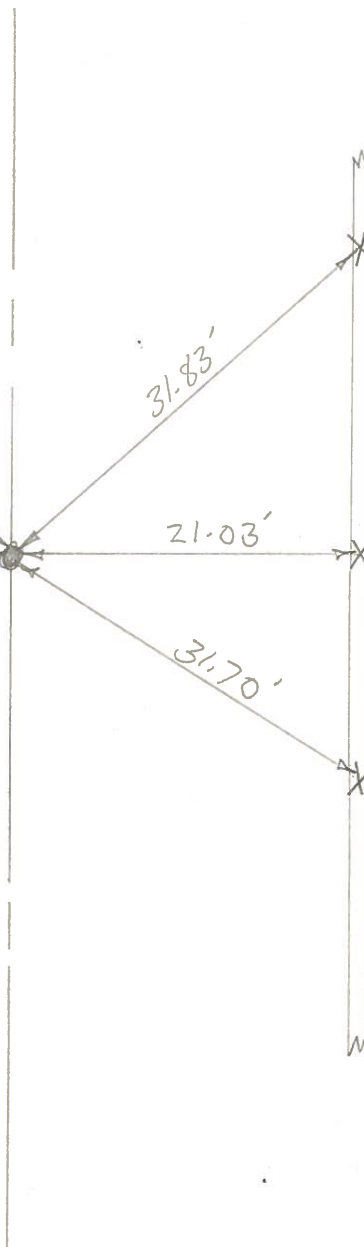
21.03'

31.70'

"4" CUT IN  
TOP CURB

BRASS MON.  
P.I.

SET P.K. NAIL  
8-21-72



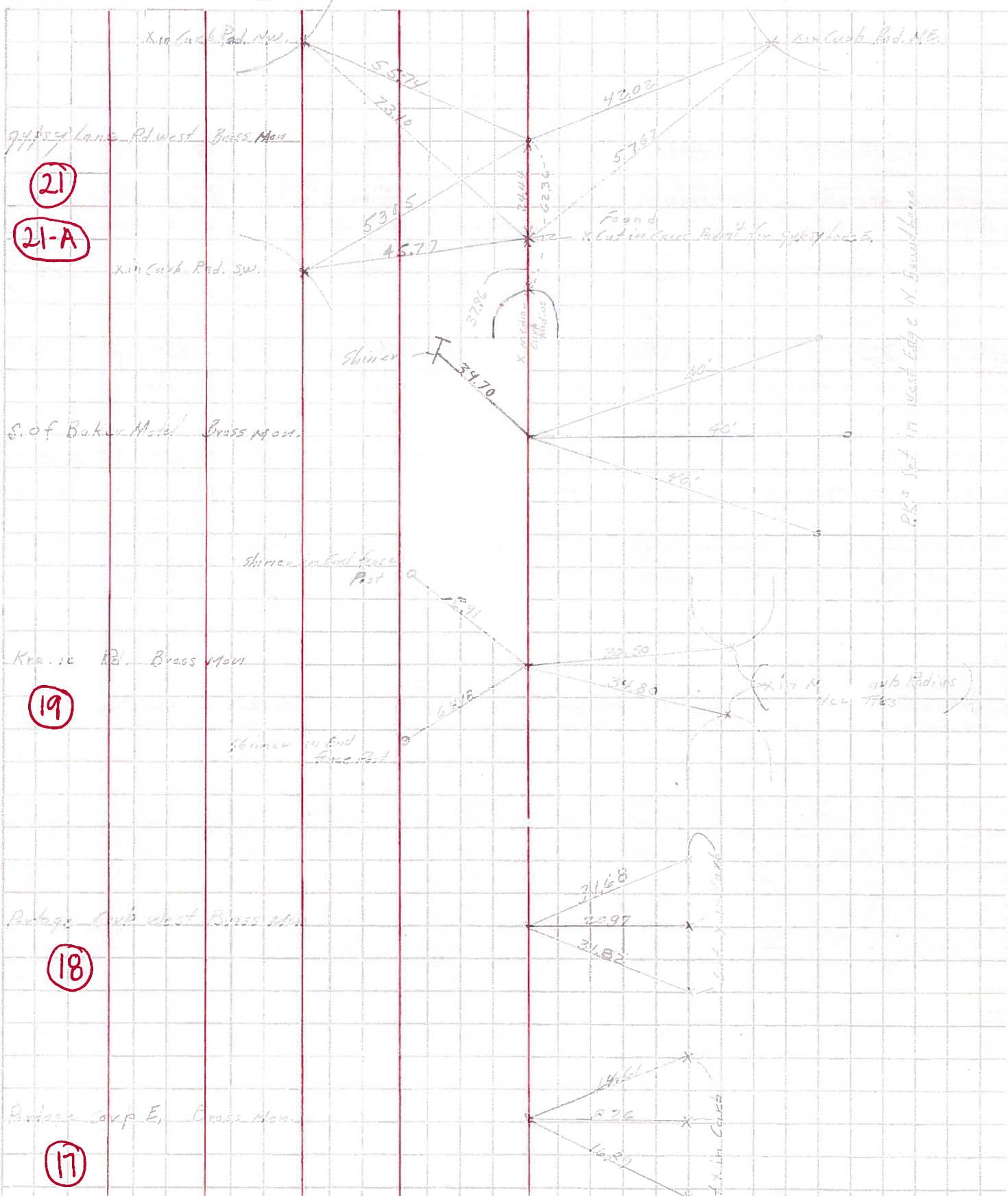
PERSONNEL TITLE PERSONNEL TITLE

COUNTY Wood DATE June 1st 64

S. R. 115 25 WEATHER

SEC. TEMP.

DESCRIPTION new wit. Ties JOB NO.



PERSONNEL TITLE PERSONNEL TITLE

COUNTY Wood

DATE

S. R. U.S. #25

WEATHER

SEC.

TEMP.

DESCRIPTION

LEFT

CENTER LINE

RIGHT

JOB NO.

Sta. 617+37.14

E 1/4 post sec. 1 Liberty  
Twp.

65.0' South Powell Ed.

Brass plate

18

#245

Shiner in T. Pole N.W. 48.16'  
 Shiner in P.P. S.S.E. 75.20'  
~~Shiner in T.P. N.W. 36.28'~~  
 Shiner in T.P. S.S.W. 115.47'  
 "X" in curb East 20.97  
 Shiner in End Post N.N.W. 60.51'  
 "X" in curb N.E. 31.63  
 "X" in curb S.E. 31.83

Sta. 645+32.8

S.W. cor. sec. 31. Center  
Twp. & Portage twp. line W.  
Brass plate, intersection  
of ~~east~~ ~~PLS~~ Kramer Ed.

19

#246

Note  
see sheets  
6A-6B  
New  
wit.

Shiner in Anchor Post N.W. 62.65  
 Iron cor. post S.W. 39.45  
 Shiner in T.P. N.N.W. 71.73 ~~60.68~~  
 Shiner in P.P. N.E. 46.37'  
 Shiner in P. Pole S.W. 57.80  
 Shiner in Anchor Post S.S.W. 64.15

Sta. 671+72.35

W. 1/4 post sec. 31. Center  
Twp.  
Brass plate

#247

Shiner in P.P. N.N.E. 76.37  
 Shiner in W. TT pole N.W. <sup>34.25'</sup> ~~58.85~~  
 Conc. Plw mon. W. 29.91  
 Shiner in P. Pole S.W. 110.22

Sta. 698+37.3

S.E. cor. sec. 25 Plain Twp.  
Gypsy lane Rd.  
Brass plate

(Could not  
Raise)

21

#248

Shiner T. Pole N.W. 84.10  
 Shiner in 12" Walnut N.W. 58.65  
 Shiner in P.P. E. 82.04 ~~41.33~~  
 N.E. cor. gas sta. (Bldg proper)  
 S.W. 96.17'  
 Shiner in light Pole S.W. 77.30