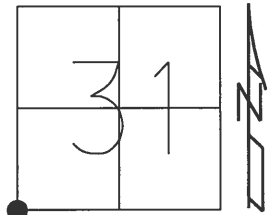


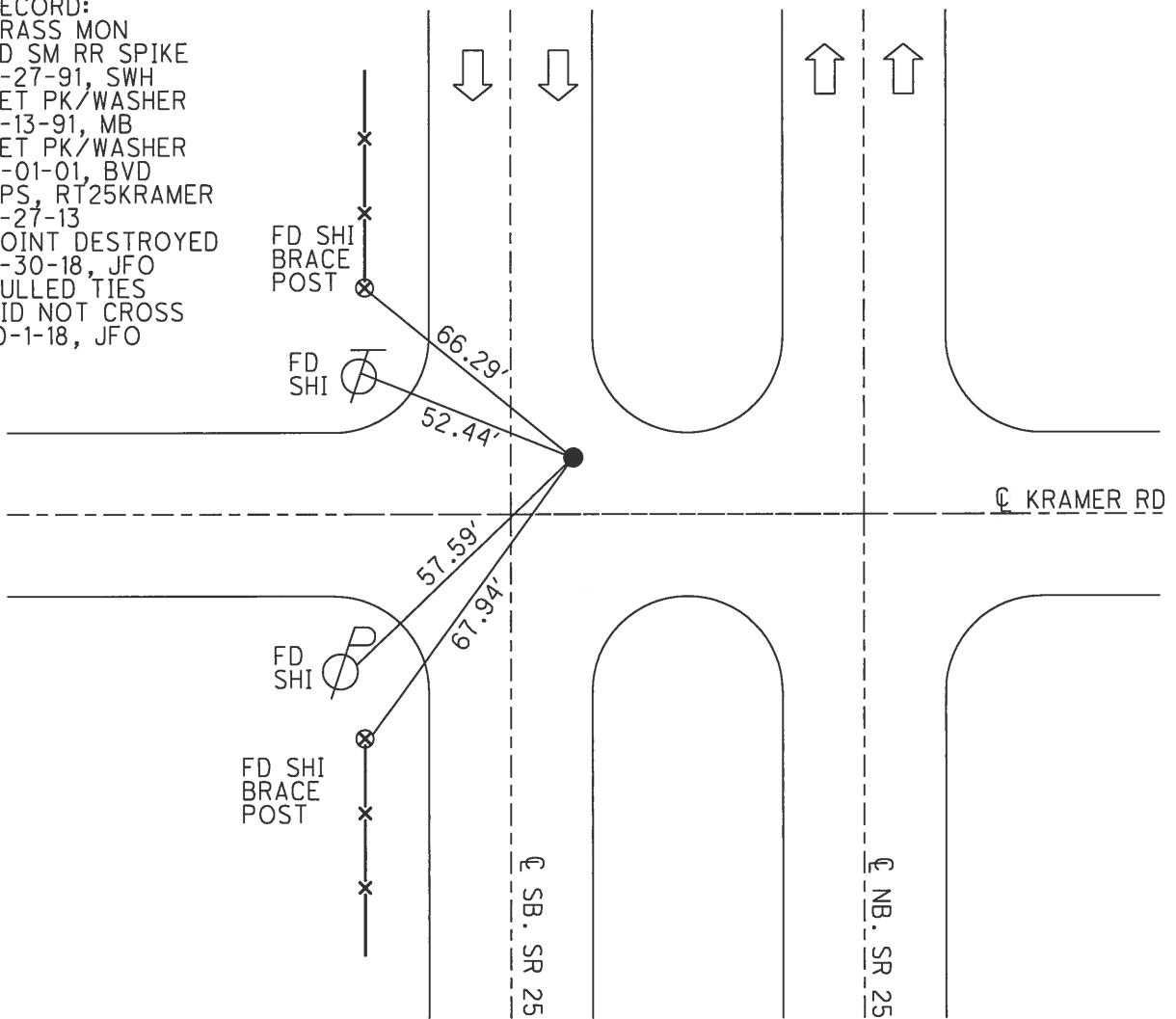
O.D.O.T. DISTRICT 2 SURVEY OFFICE (USE ONLY)

PERSONNEL _____ REFERENCE NO. 19 SHEET 1 OF 4
 NOTES HUSS DATE 4-16-01 ROUTE US 25
 H.C. ROUSOS WEATHER RAIN COUNTY WOOD
 R.C. VAN DUSEN TEMP. 41°F TOWNSHIP CENTER
 SECTION 31
 T 4 N R 10 E

TYPE MONUMENT P.K./WASHER
 ON SURFACE - ~~BELOW~~ ON _____
 LEFT - ☉ PAV'T - RIGHT 5.7' E. OF ☉ SB, 3' N. ☉ W.
18.9' TO W. EDGE PAVEMENT
 S.L.M. 402+87
 Grid: Northing: 612508.505 Easting: 1652623.745



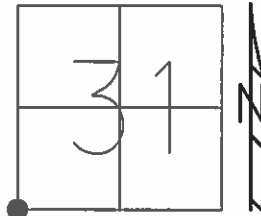
RECORD:
 BRASS MON
 FD SM RR SPIKE
 3-27-91, SWH
 SET PK/WASHER
 6-13-91, MB
 SET PK/WASHER
 11-01-01, BVD
 GPS, RT25KRAMER
 8-27-13
 POINT DESTROYED
 5-30-18, JFO
 PULLED TIES
 DID NOT CROSS
 10-1-18, JFO



O.D.O.T. DISTRICT 2 SURVEY OFFICE (USE ONLY)

PERSONNEL _____ REFERENCE NO. 19 SHEET 1 OF 4
 NOTES HUSS DATE 4-16-01 ROUTE US 25
 H.C. ROUSOS WEATHER RAIN COUNTY WOOD
 R.C. VAN DUSEN TEMP. 41°F TOWNSHIP CENTER
 SECTION 31
 T 4 N R 10 E

TYPE MONUMENT PK/WASHER
 ON SURFACE - ~~BELOW~~ ON _____
 LEFT - ☉ PAV'T - RIGHT 5.7' E. OF ☉ SB, 3' N. ☉ W.
18.9' TO W. EDGE PAVEMENT
 S.L.M. 402+87
 Grid: Northing: 612508.5053 Easting: 1652623.7454



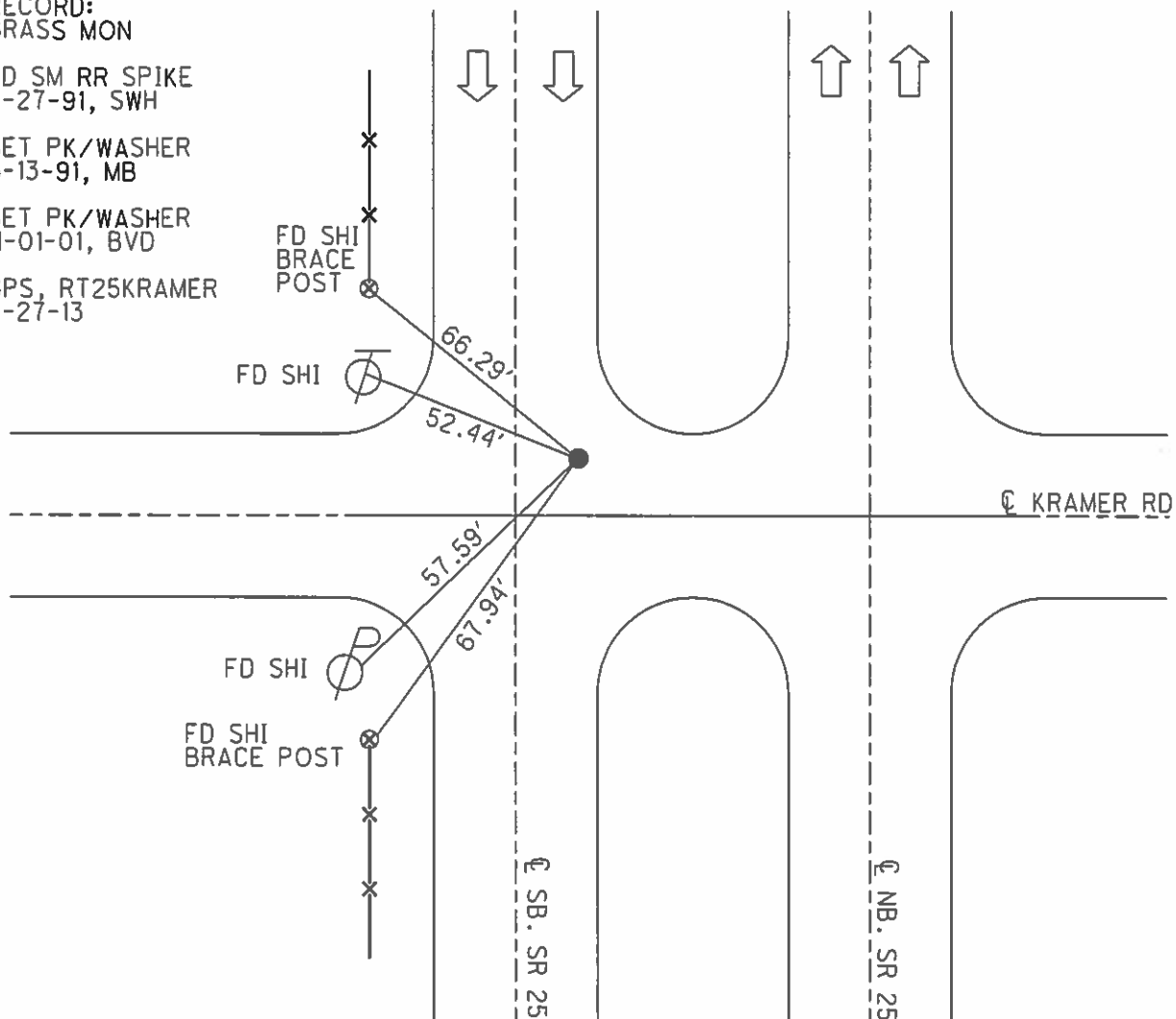
RECORD:
BRASS MON

FD SM RR SPIKE
3-27-91, SWH

SET PK/WASHER
6-13-91, MB

SET PK/WASHER
11-01-01, BVD

GPS, RT25KRAMER
8-27-13



O.D.O.T. DISTRICT 2 SURVEY OFFICE

PERSONNEL

REFERENCE NO. 19

SHEET 22 OF 23

NOTES Huss

H.C. Rousos

R.C. VanRusen

DATE 4-16-01

WEATHER Cldy-Rain

TEMP. +41°F

ROUTE SR-25

COUNTY Wood

TOWNSHIP Center

SECTION 31

T 4 N R 10 E

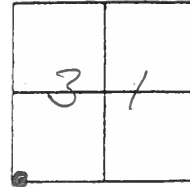
TYPE MONUMENT PK/W

~~ON SURFACE~~ ~~BELOW~~ Surface

LEFT - E PAV'T. - RIGHT 57' E. & S.R. Lanes

18.9' TO West EDGE PAVEMENT

S.L.M. 402+87



Record:
Set PK/W
6-13-91 MB

Record:
Brass Mon

Record:
Fd Sm. RR
spk 3-27-91
SWH

Set PK/W
11-01-01
BUD.

Set N/Shi
in Brass Post

66.29'

52.74'

57.66'

3' North
of E Pav
Kramer Rd

E Pav.
Kramer Rd.

Set
N/Shi

E Pav.
S.R. SR-25

E Pav.
N.R. SR-25

O.D.O.T. DISTRICT 2 SURVEY OFFICE

PERSONNEL

REFERENCE NO. 19

SHEET 22 OF 23

NOTES HOFFMAN

H.C. LOEHRS

R.C. BARNHISEL

DATE 3-27-91

WEATHER P. CLEAR

TEMP. 55°

ROUTE SR 25

COUNTY WOOD

TOWNSHIP CENTER

SECTION 31

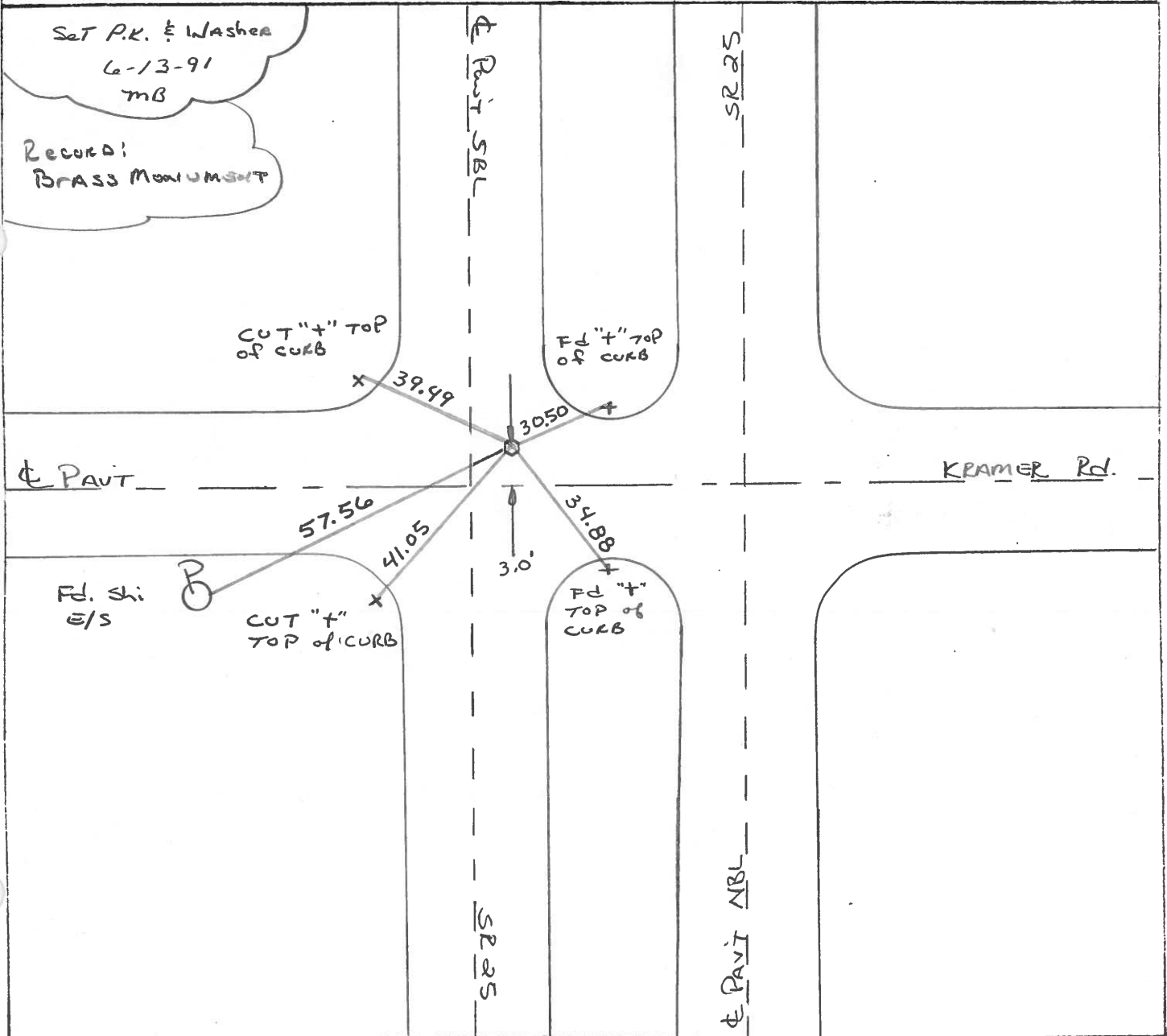
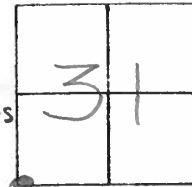
T4 N R 10 E

TYPE MONUMENT SMALL R.R. SPK

ON SURFACE - BELOW YES

LEFT- & PAVT. - RIGHT 5.7' EAST OF & PART OF THE SOUTH BOUND LINES
18.9 TO WEST EDGE PAVEMENT

S.L.M. 402 + 87



O.D.O.T. DISTRICT 2 SURVEY OFFICE

SHEET OF

County WOOD ^{U.S.} S.R. 25

Township CENTER

Section 31

T4N, R10E

Personnel BURNSIDE

SMITH

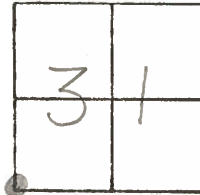
BOWERS

HOLCOMBE

Date OK. 5-18-78
5-24-71

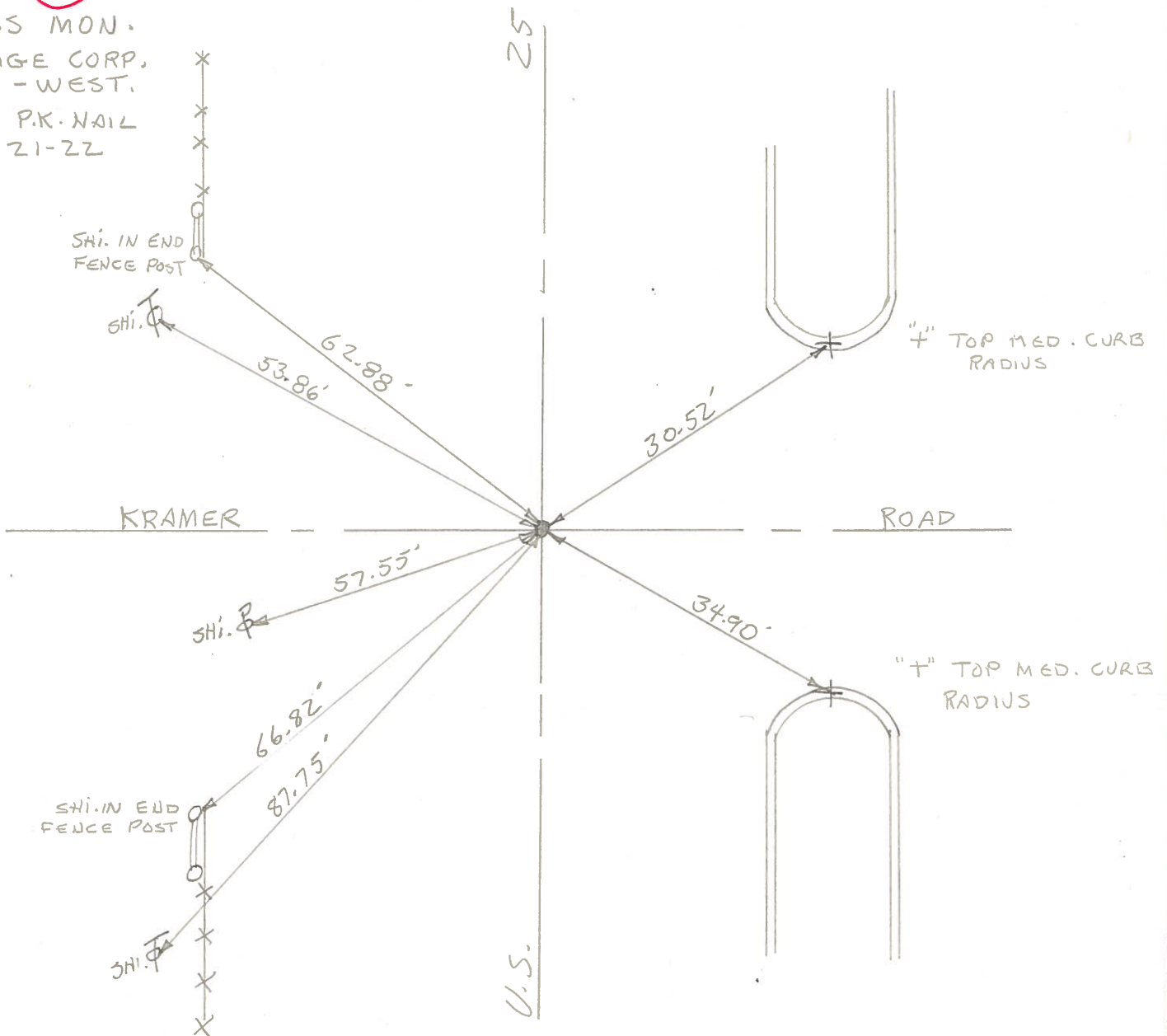
Weather RAIN

Temp. 70°



#19

BRASS MON.
PORTAGE CORP.
LINE - WEST.
SET P.K. NAIL
8-21-22



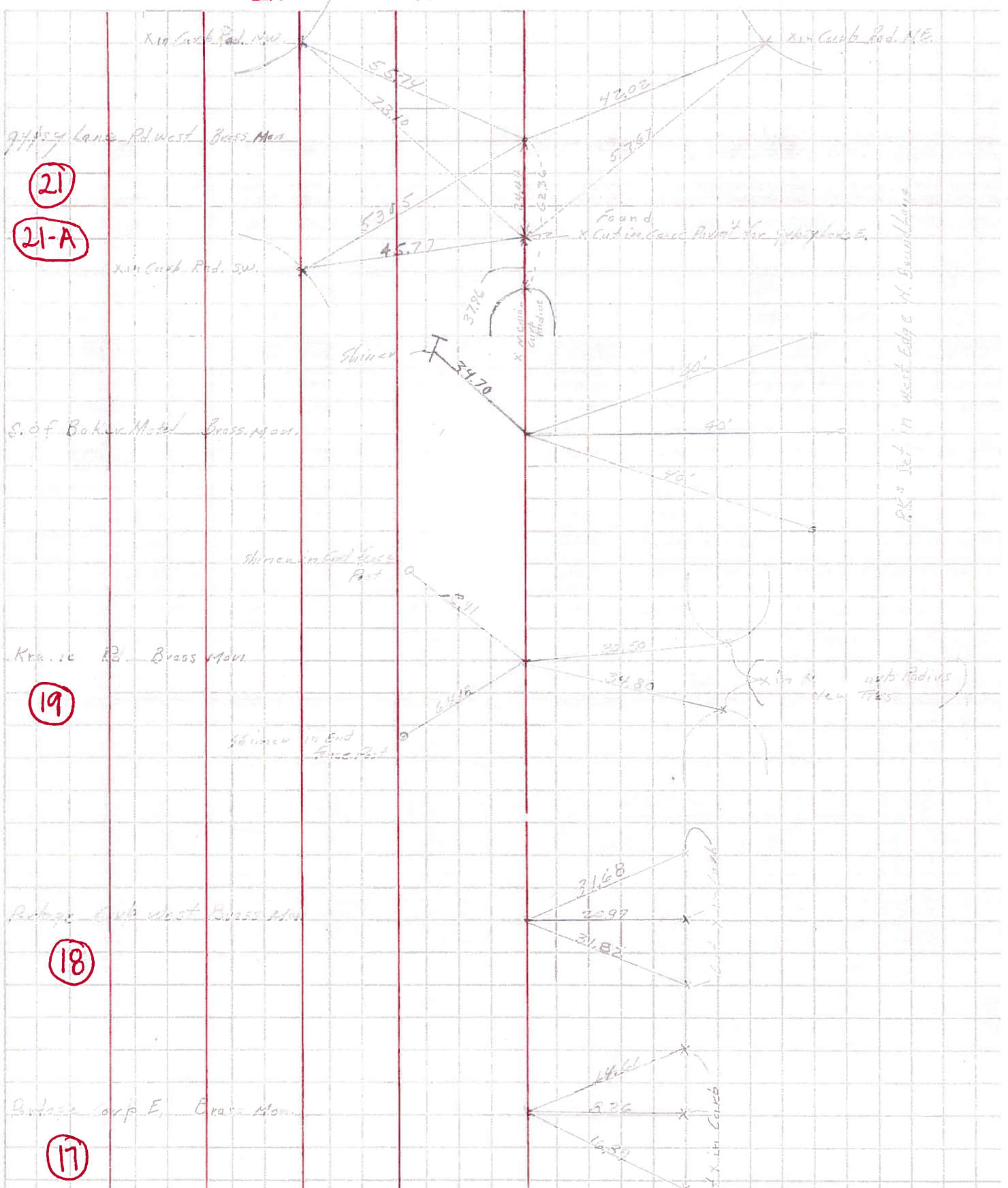
PERSONNEL TITLE PERSONNEL TITLE

COUNTY Wood DATE June 1st 64

S. R. 115 25 WEATHER

SEC. TEMP.

DESCRIPTION New Wit. Ties JOB NO.



PERSONNEL	TITLE	PERSONNEL	TITLE	COUNTY	DATE
				Wood	
				S. R. U.S. #25	WEATHER
				SEC.	TEMP.

DESCRIPTION	LEFT	CENTER LINE	RIGHT	JOB NO.
-------------	------	-------------	-------	---------

Sta. 617+37.14 E 1/4 post sec. 1 Liberty Twp. 65.0' South Powell Ed. Brass plate (18) #245			Shiner in T. Pole N.W. 48.16 Shiner in P.P. S.S.E. 75.26 Shiner in T.P. N.W. 36.28 Shiner in T.P. S.S.W. 115.47 "X" in curb East 20.97 Shiner in End Post N.N.W. 60.51 "X" in curb N.E. 31.63 "X" in curb S.E. 31.83	
Sta. 645+32.8 S.W. cor. sec. 31 Center Twp. & Portage twp. line W. Brass plate, intersection of east Ed. Kramer Ed. (19) #246			Shiner in Anchor Post N.W. 62.6 Iron ear. post S.W. 39.4 Shiner in T.P. N.N.W. 71.73 68.68 Shiner in P.P. N.E. 46.37 Shiner in P. Pole S.W. 57.86 Shiner in Anchor Post S.S.W. 64.15	
Sta. 671+72.35 W. 1/4 post sec. 31 Center Twp. Brass plate (20) #247			Shiner in P.P. N.N.E. 76.3 Shiner in W. TT pole N.W. ^{34.76} 58.84 Conc. R/W mon. W. 29.91 Shiner in P. Pole S.W. 110.22	
Sta. 698+37.3 S.E. cor. sec. 25 Plain Twp. Gypsy lane Rd. Brass plate (Could not Raise) (21) #248			Shiner T. Pole N.W. 84.1 Shiner in 12" Walnut N.W. 58.6 Shiner in P.P. E. 82.04 41.2 N.E. cor. gas sta. (Bldg proper) S.W. 96.17 Shiner in light Pole S.W. 77.36	

Note
see sheets
6A-6B
New
w/it.