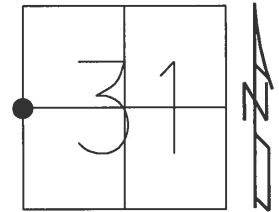


O.D.O.T. DISTRICT 2 SURVEY OFFICE (USE ONLY)

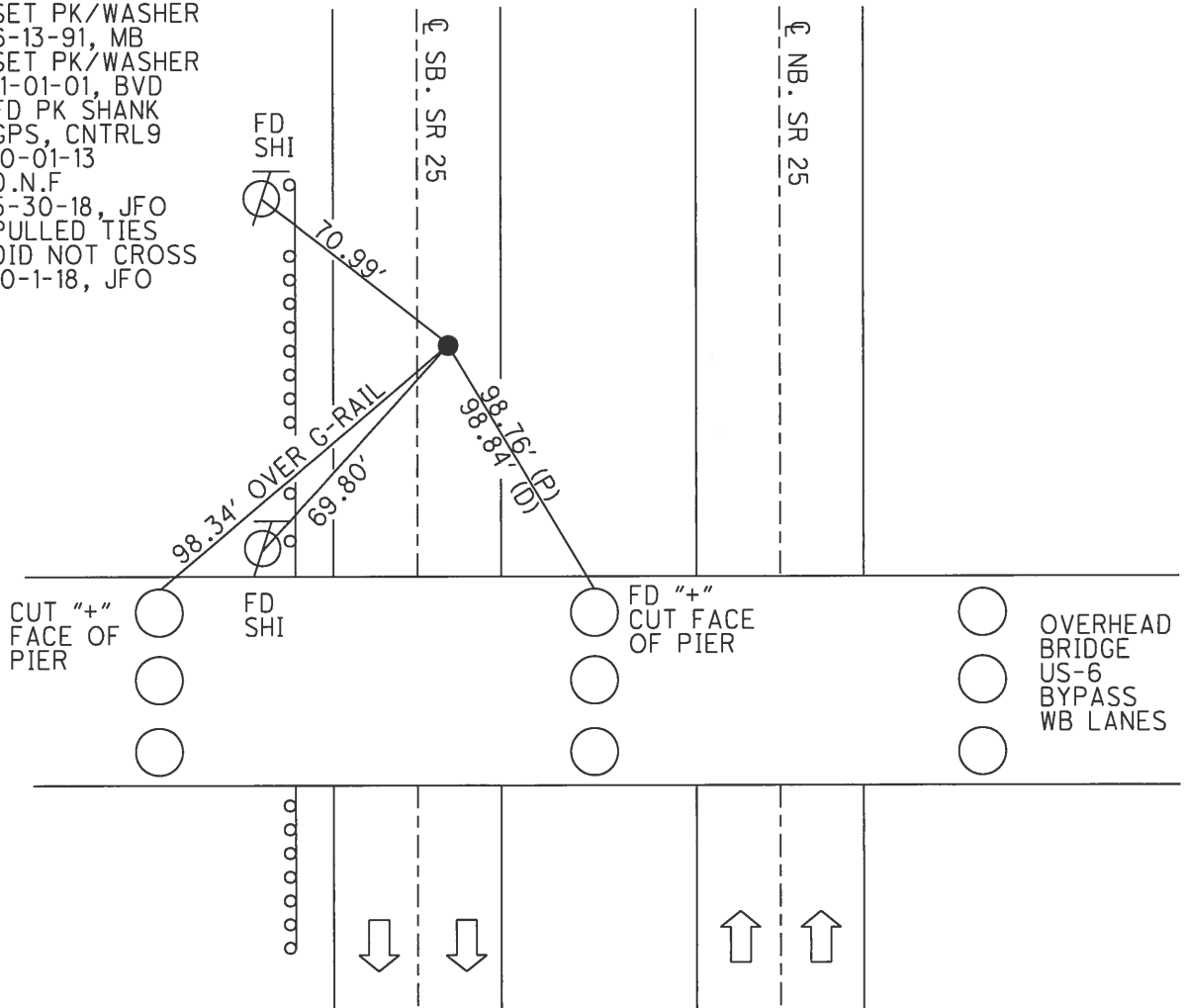
PERSONNEL _____ REFERENCE NO. 20 SHEET 2 OF 4
 NOTES HUSS DATE 4-16-01 ROUTE US 25
 H.C. ROUSOS WEATHER RAIN COUNTY WOOD
 R.C. VAN DUSEN TEMP. 41°F TOWNSHIP CENTER
 SECTION 31
 T 5 N R 10 E

TYPE MONUMENT P.K./WASHER
 ON SURFACE - ~~BELOW~~ ON _____
 LEFT - ☉ PAV'T - RIGHT 2.3' E. ☉ SB LANE
9.9' TO E. EDGE PAVEMENT
 S.L.M. 427+24



Grid: Northing: 615147.486 Easting: 1652659.669

RECORD:
 BRASS MON
 SET PK/WASHER
 6-13-91, MB
 SET PK/WASHER
 11-01-01, BVD
 FD PK SHANK
 GPS, CNTRL9
 10-01-13
 D.N.F.
 5-30-18, JFO
 PULLED TIES
 DID NOT CROSS
 10-1-18, JFO



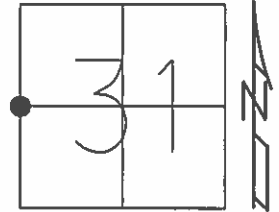
O.D.O.T. DISTRICT 2 SURVEY OFFICE (USE ONLY)

PERSONNEL _____ REFERENCE NO. 20 SHEET 2 OF 4

NOTES HUSS DATE 4-16-01 ROUTE US 25
 H.C. ROUSOS WEATHER RAIN COUNTY WOOD
 R.C. VAN DUSEN TEMP. 41°F TOWNSHIP CENTER
 SECTION 31
 T 5 N R 10 E

TYPE MONUMENT PK/WASHER
 ON SURFACE - ~~BELOW~~ ON _____
 LEFT - ☉ PAV'T - RIGHT 2.3' E. ☉ SB LANE
9.9' TO E. EDGE PAVEMENT
 S.L.M. 427+24

Grid: Northing: 615147.4855 Easting: 1652659.6690

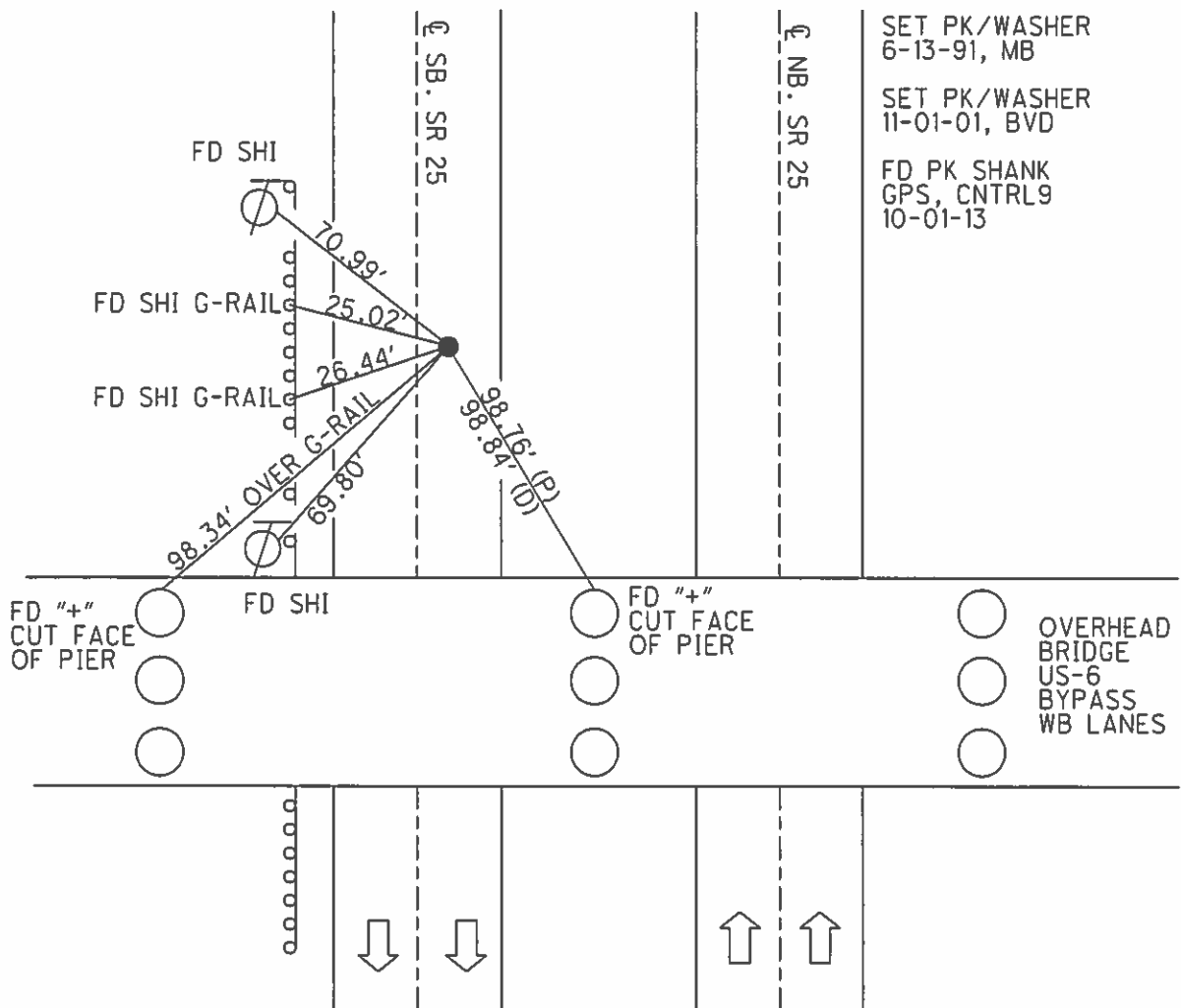


RECORD:
BRASS MON

SET PK/WASHER
6-13-91, MB

SET PK/WASHER
11-01-01, BVD

FD PK SHANK
GPS, CNTRL9
10-01-13



O.D.O.T. DISTRICT 2 SURVEY OFFICE

PERSONNEL

REFERENCE NO. 20

SHEET 23 OF 23

NOTES Huss

H.C. Rousos

R.C. VanNusen

DATE 4-16-01

WEATHER cldy-Rain

TEMP. +41°F

ROUTE SR-25

COUNTY Wood

TOWNSHIP Center

SECTION 31

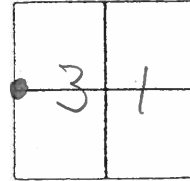
T 5 N R 10 E

TYPE MONUMENT PK/W

ON SURFACE - ~~BELOW~~ Surface

LEFT - E PAV'T. - RIGHT 2.3' E. E Pav SB Lanes
9.9' TO East EDGE PAVEMENT

S.L.M. 429+24

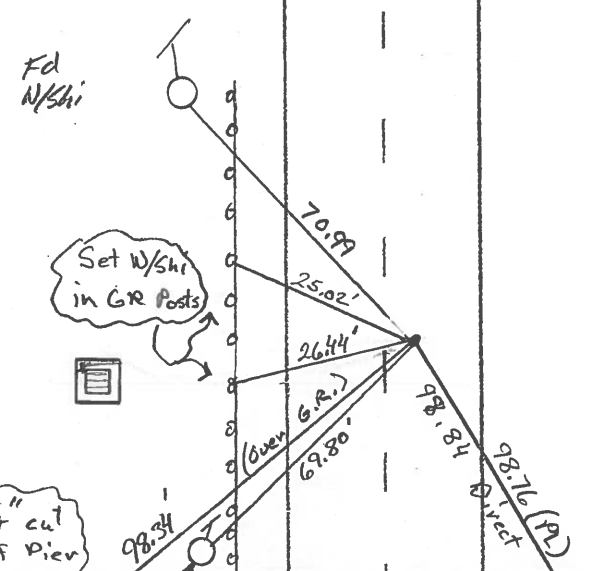


Record:
 Set PK/W MB
6-13-91
 Record:
 Brass Mon.

W Pav.
SR-25
5.13'

E Pav.
SR-25
N.B.

Set PK/W
11-01-01
BUY



Fd + cut face of Pier

Fd + cut face of Pier

Overhead Bridge
 US-6
 By Pass
 W.B. Lanes

○ = Concrete Piers

O.D.O.T. DISTRICT 2 SURVEY OFFICE

PERSONNEL

REFERENCE NO. 20

SHEET 23 OF 23

NOTES HOFFMAN

H.C. LOEHRKE

R.C. BARANISEL

DATE 3-27-91

WEATHER P. CLEAR

TEMP. 55°

ROUTE SR 25

COUNTY WOOD

TOWNSHIP CENTER

SECTION 31

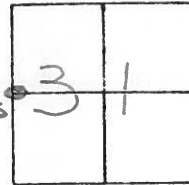
T5 NR 10 E

TYPE MONUMENT SMALL R.R. SPIK

ON SURFACE - BELOW YES

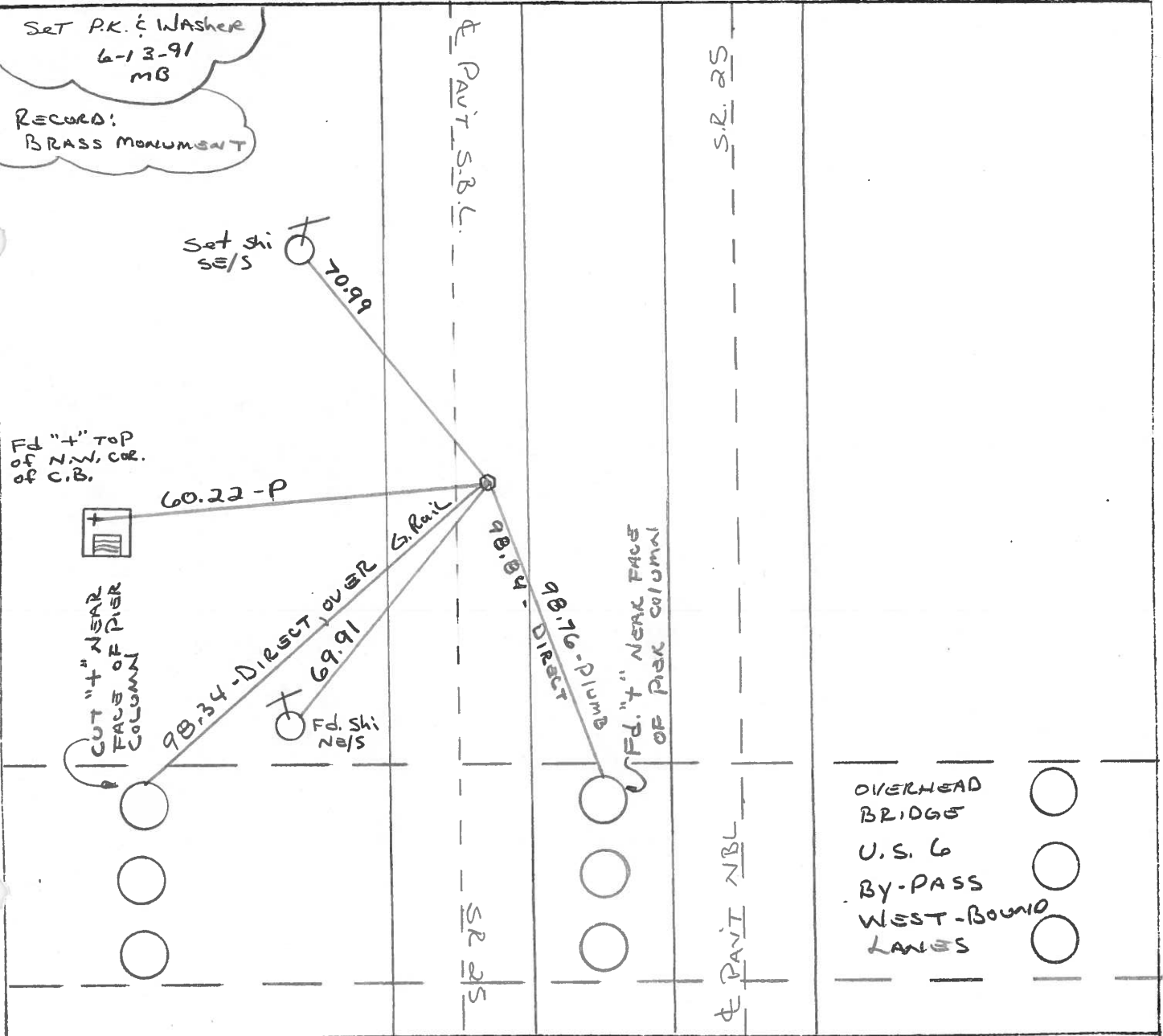
LEFT- & PAV'T. - RIGHT 2.3' EAST of & PAUT of the
9.9 TO EAST EDGE PAVEMENT SOUTHBOUND LANES

S.L.M. 429+24



SET P.K. & WASHER
6-13-91
MB

RECORD:
BRASS MONUMENT



- OVERHEAD BRIDGES
- U.S. 6
- BY-PASS WEST-BOUND LANES

O.D.O.T. DISTRICT 2 SURVEY OFFICE

SHEET _____ OF _____

County WOOD ^{U.S.} S.R. 25

Date 5-25-71 ^{OK. 5-18-78}

Township CENTER

Weather RAIN

Section 31

Temp. 60°

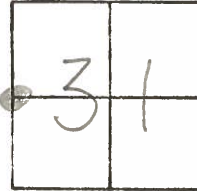
T5N, R10E

Personnel BURNSIDE

SMITH

BOWER

HOLCOMBE



20

BRASS MON.
SET P.K. NAIL
8-21-72

"+" TOP OF
N.W. COR. C.B.



60.18'
(D)

69.95'

73.09'

98.78'

"+" NEAR EDGE
CTR. PIER COLUMN
U.S. #6 BY-PASS

