

O.D.O.T. DISTRICT 2 SURVEY OFFICE (USE ONLY)

PERSONNEL _____ REFERENCE NO. 21 SHEET 3 OF 4

NOTES BARNHISEL DATE 6-10-92 ROUTE US 25
 H.C. VAN DUSEN WEATHER SUNNY COUNTY WOOD
 R.C. BURNETT TEMP. 55°F TOWNSHIP PLAIN
 SECTION 25
 T 5 N R 10 E

TYPE MONUMENT SM RR SPIKE

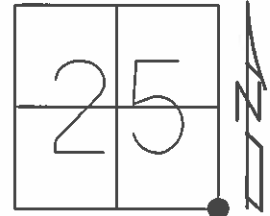
ON SURFACE - ~~BELOW~~ ON _____

LEFT - ☉ PAV'T - RIGHT ON, 1.5' S. OF ☉ E.

- TO - EDGE PAVEMENT

S.L.M. 456+39

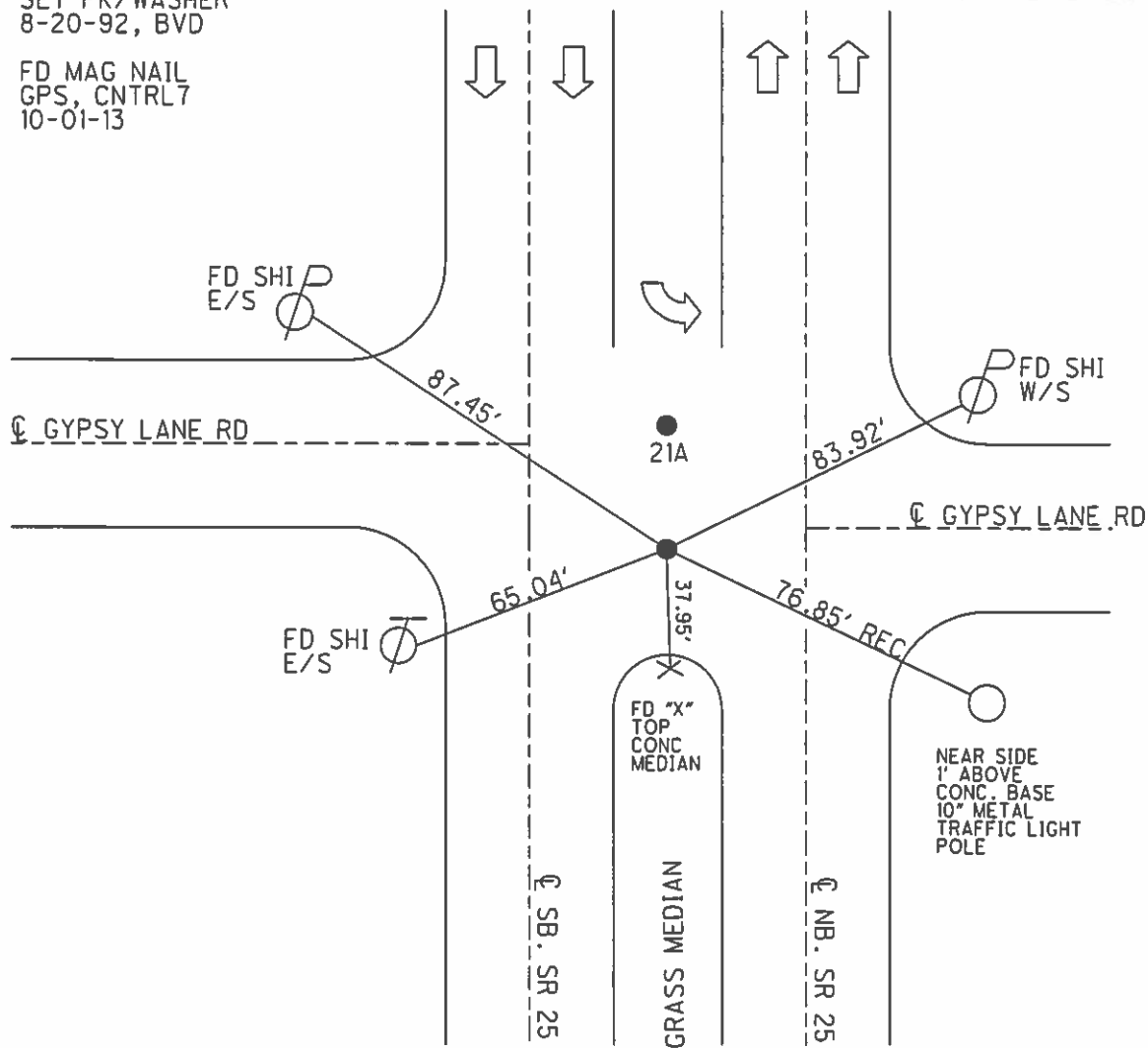
Grid: Northing: 617786.8940 Easting: 1652693.3580



RECORD:
 SET PK/WASHER
 8-20-92, BVD

FD MAG NAIL
 GPS, CNTRL7
 10-01-13

DIST. 21-21A = 24.46'



O.D.O.T. DISTRICT 2 SURVEY OFFICE

PERSONNEL

REFERENCE NO. 21

SHEET 1 OF 22

NOTES BARNHISEL

H.C. VAN DUSEN

DATE 6-10-92

ROUTE U.S. 25

R.C. BURNETT

WEATHER SUNNY

COUNTY WOOD

TEMP. +55°

TOWNSHIP PLAIN

SECTION 25

PT (A)

PT (B)

T 5 N R 10 E

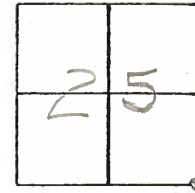
TYPE MONUMENT Sm RR Spk Sm RR Spk

ON SURFACE - ~~BELOW~~ YES YES

~~LEFT - & PAV'T. - RIGHT~~ YES YES

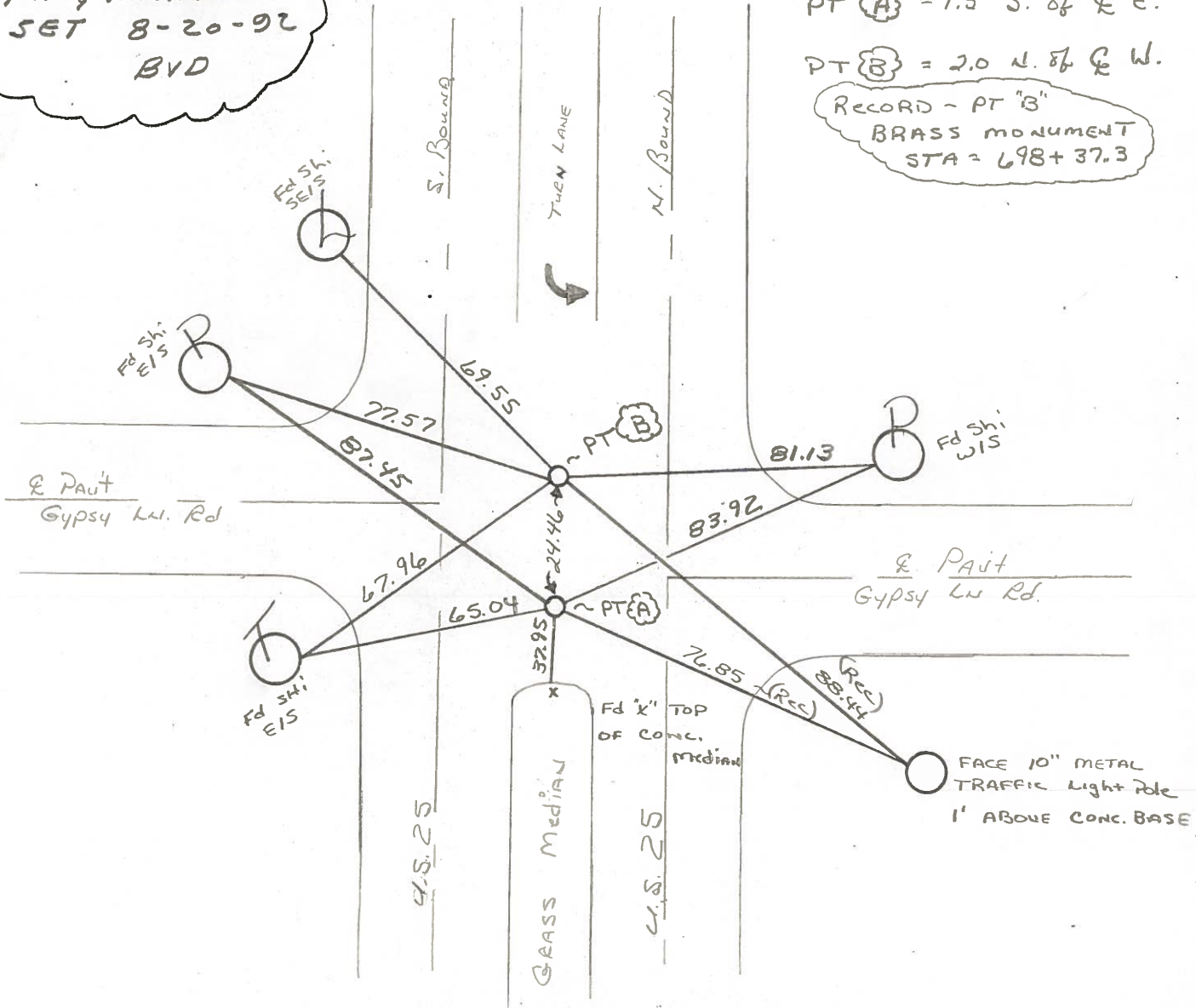
- TO - EDGE PAVEMENT

S.L.M. 456+39 & 456+63



PK'S & WASHERS
SET 8-20-92
BYD

PT (A) = 1.5 S. of E.
PT (B) = 2.0 N. of E. W.
RECORD - PT "B"
BRASS MONUMENT
STA = 698+37.3



O.D.O.T. DISTRICT 2 SURVEY OFFICE

SHEET _____ OF _____

County WOOD ~~S.R.~~ U.S. 25

Township PLAIN

Section 25

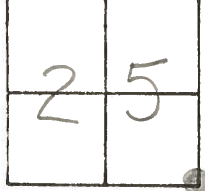
T5N, R10E

Personnel BURNSIDE
SMITH
BOWERS

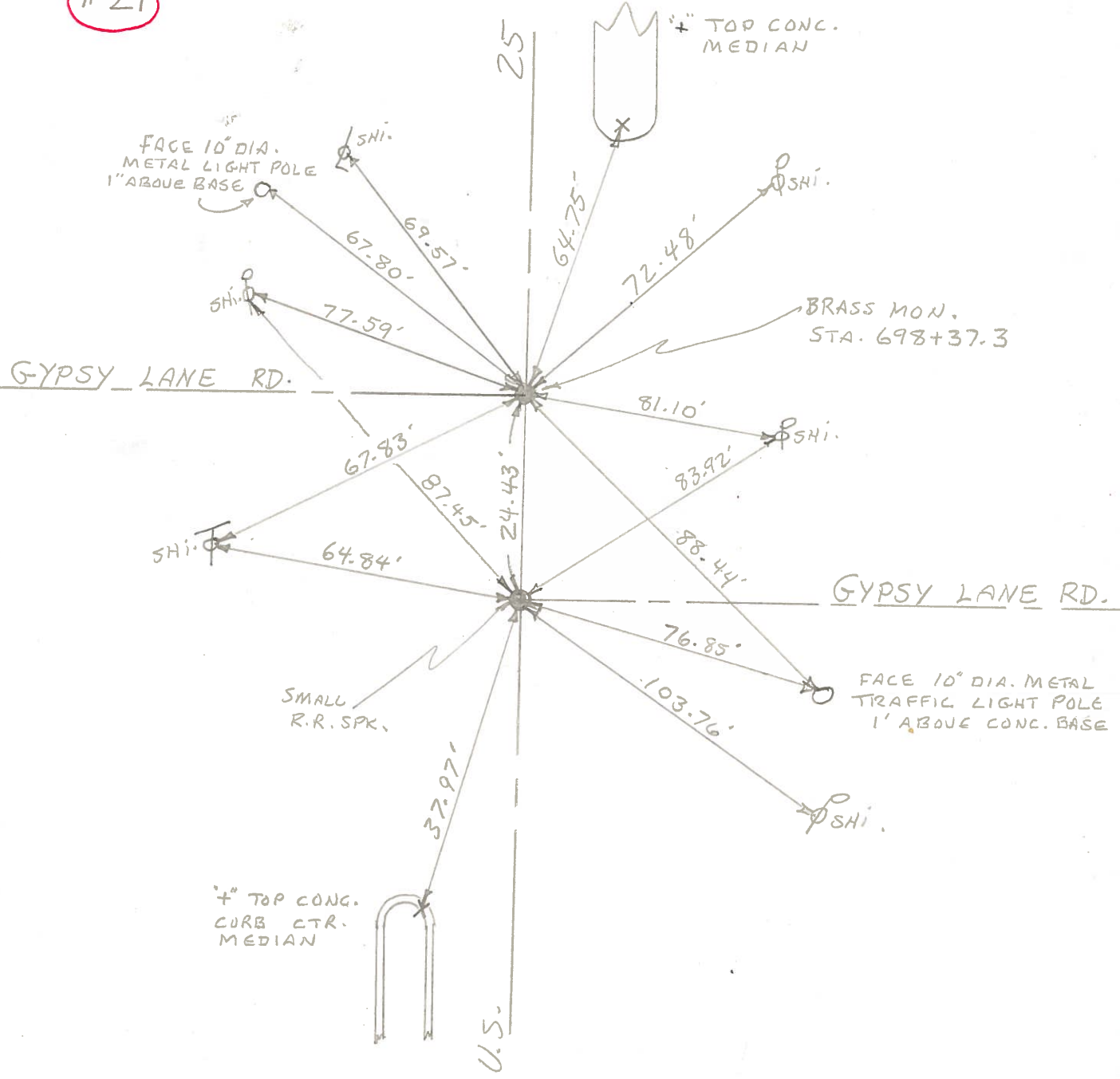
Date 7-7-71

Weather CLEAR

Temp. 77°



21



PERSONNEL TITLE PERSONNEL TITLE

COUNTY Wood

DATE June 1st 64

S. R. 415 25

WEATHER

SEC.

TEMP.

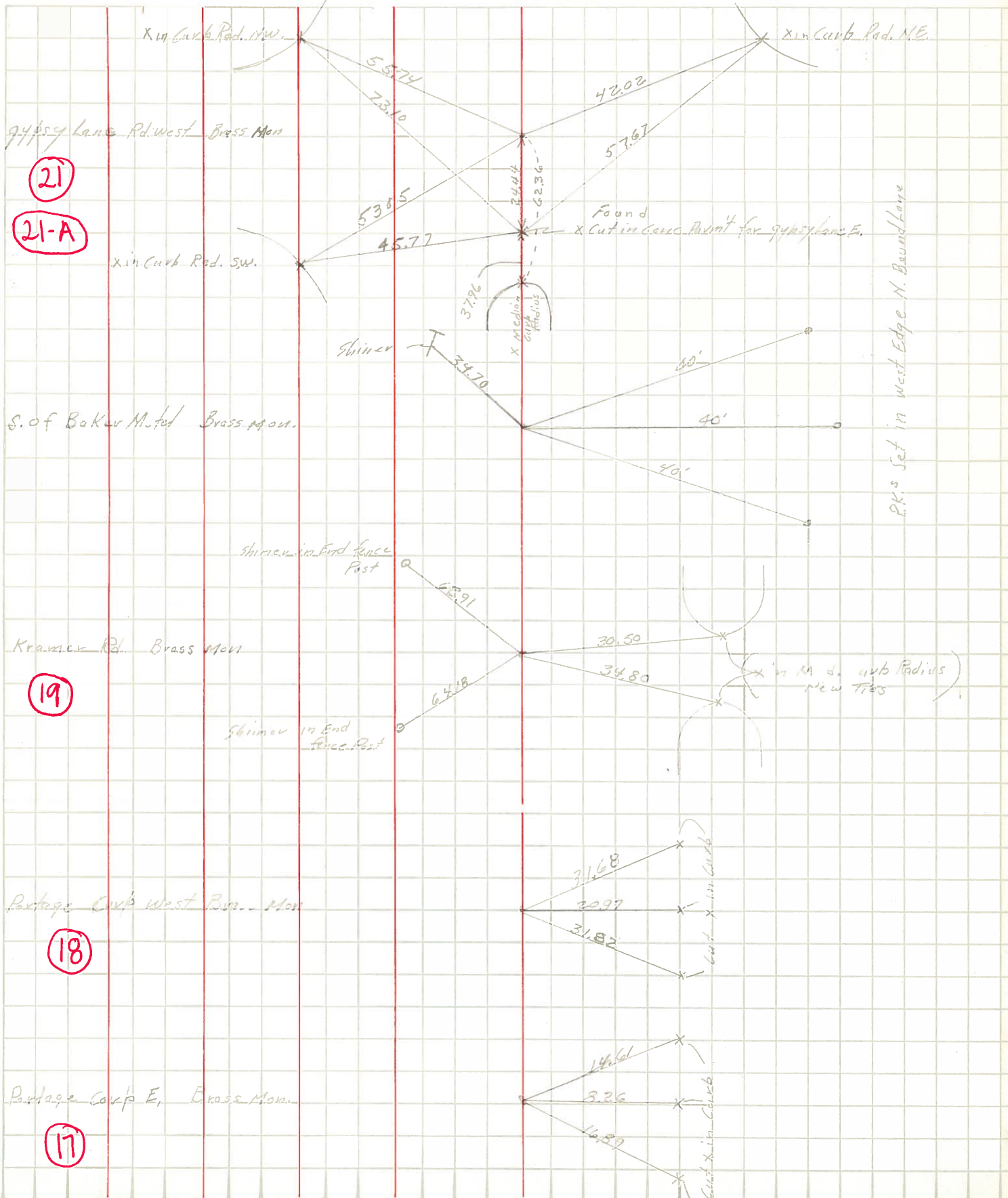
DESCRIPTION New Wit. Ties

JOB NO.

LEFT

CENTER LINE

RIGHT



(21)
(21-A)

(19)

(18)

(17)

PERSONNEL	TITLE	PERSONNEL	TITLE	COUNTY	DATE
				Wood	
				S. R. U.S. #25	WEATHER
				SEC.	TEMP.

DESCRIPTION	LEFT	CENTER LINE	RIGHT	JOB NO.
-------------	------	-------------	-------	---------

Sta. 617+37.14 E 1/4 post sec. 1 Liberty Twp. 65.0' South Powell Ed. Brass plate (18) #245			Shiner in T. Pole N.W.	48.16	
			Shiner in P.P. S.S.E.	75.20	
			Shiner in T.P. N.W.	36.28	
			Shiner in T.P. S.S.W.	115.47	
			"X" in curb East	20.97	
			Shiner in End Post N.N.W.	60.51	
			"X" in curb N.E.	31.63	
			"X" in curb S.E.	31.83	
	Sta. 645+32.8 S.W. cor. sec. 31. Center Twp. & Portage twp. line W. Brass plate, intersection of roads Bluff Kramer Ed. (19) #246			Shiner in Anchor Post N.W.	62.60
				Iron ear. post S.W.	39.40
			Shiner in T.P. N.N.W.	71.73 60.68	
			Shiner in P.P. N.E.	46.37	
			Shiner in P. Pole S.W.	57.80	
			Shiner in Anchor Post S.S.W.	64.10	
Sta. 671+72.35 W. 1/4 post sec. 31. Center Twp. Brass plate (20) #247			Shiner in P.P. N.N.E.	76.30	
			Shiner in W. TT pole N.W.	^{34.25} 58.80	
			Conc. Plw man. W.	29.91	
			Shiner in P. Pole S.W.	110.22	
Sta. 698+37.3 S.E. cor. sec. 25 Plain Twp. Gypsy lane Rd. Brass plate (Could not Raise) (21) #248			Shiner T. Pole N.W.	84.10	
			Shiner in 12" Walnut N.W.	58.60	
			Shiner in P.P. E.	82.04 44.30	
			N.E. cor. gas sta. (Bldg proper)	S.W. 96.17	
			Shiner in light Pole S.W.	77.30	

Note
 see sheets
 6A-6B
 New
 wit.