

O.D.O.T. DISTRICT 2 SURVEY OFFICE (USE ONLY)

PERSONNEL

REFERENCE NO. 22 BC

SHEET 9 OF 35

NOTES BARNHISEL DATE 4/14/92

ROUTE US 25

H.C. VAN DUSEN WEATHER CLOUDY

COUNTY WOOD

R.C. BARNHISEL TEMP. 40°

TOWNSHIP PLAIN

SECTION 25

DWG BY RHOADES PID \_\_\_\_\_

T 5 N R 10 E

TYPE MONUMENT P.K.NAIL

ON SURFACE - ~~BELOW~~ ON \_\_\_\_\_

OFFSET ☐ PAVEMENT ON \_\_\_\_\_ LT : RT

22.7' TO RT CURB

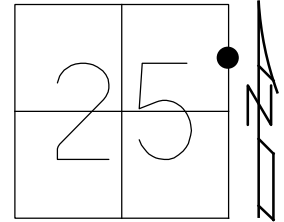
STATION: 494+61

HORZ.DATUM: \_\_\_\_\_

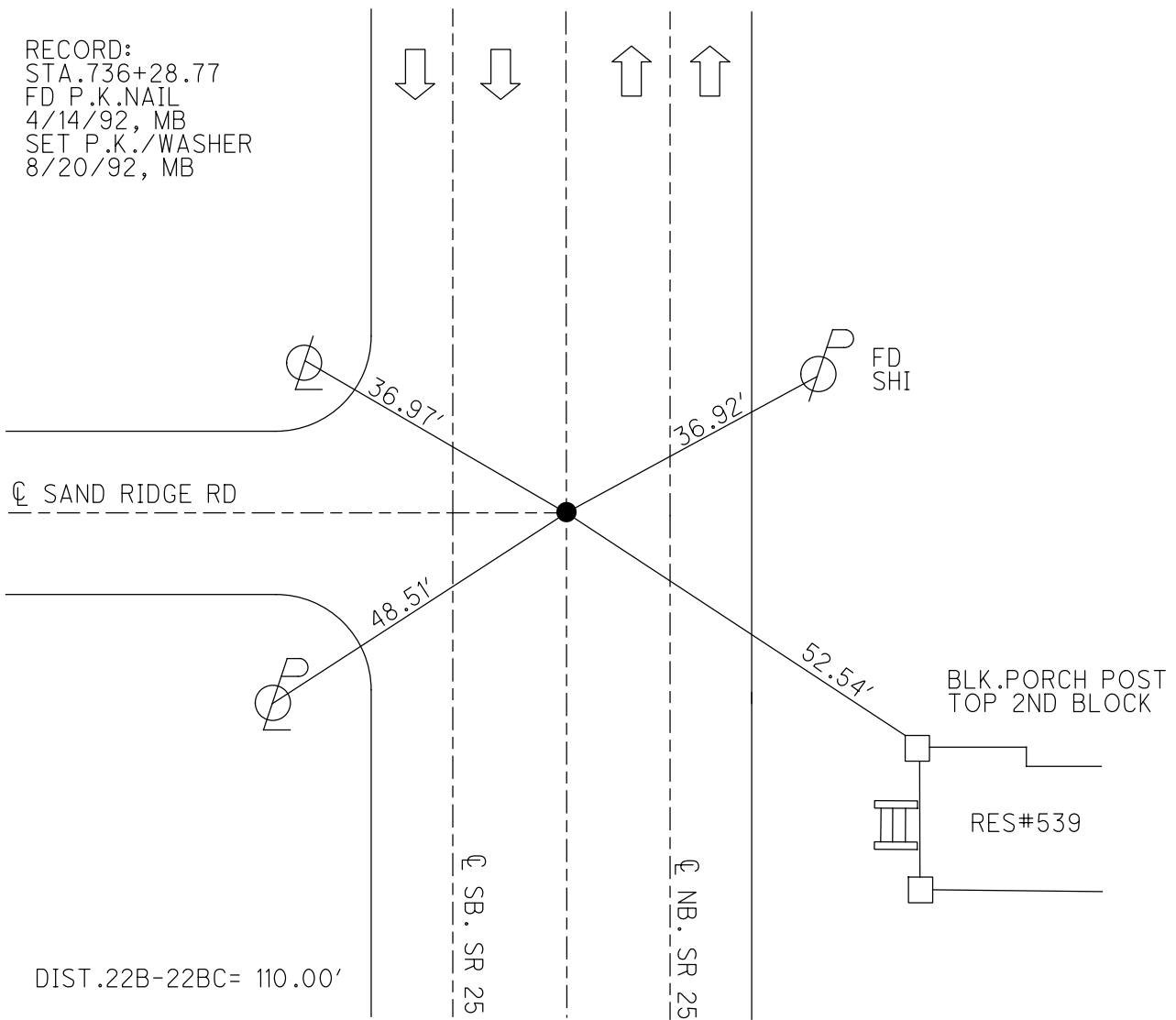
GEOID: \_\_\_\_\_

GRID: NORTHING: \_\_\_\_\_

EASTING: \_\_\_\_\_



RECORD:  
 STA. 736+28.77  
 FD P.K.NAIL  
 4/14/92, MB  
 SET P.K./WASHER  
 8/20/92, MB





ODOT. DISTRICT 2 SURVEY OFFICE

SHEET OF

County WOOD U.S. S.R. 25

Date 3-26-75

Township PLAIN

Weather PT. CLOUDY

Section 25

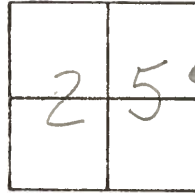
Temp. 26°

T5N, R10E

Personnel BURNSIDE

SMITH

BOWERS



# 22-8

