

O.D.O.T. DISTRICT 2 SURVEY OFFICE (USE ONLY)

PERSONNEL

REFERENCE NO. 22 E

SHEET 12 OF 35

NOTES BARNHEISEL

DATE 4/14/92

ROUTE US 25

H.C. VAN DUSEN

WEATHER CLOUDY

COUNTY WOOD

R.C. BARNHEISEL

TEMP. 40°

TOWNSHIP PLAIN

DWG BY RHOADES PID \_\_\_\_\_

SECTION 25

T 5 N R 10 E

TYPE MONUMENT P.K.NAIL

ON SURFACE - ~~BELOW~~ ON

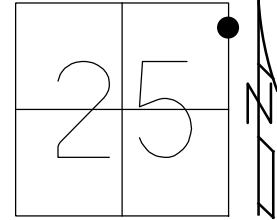
OFFSET Q PAVEMENT ON LT : RT

22.3' TO LT CURB

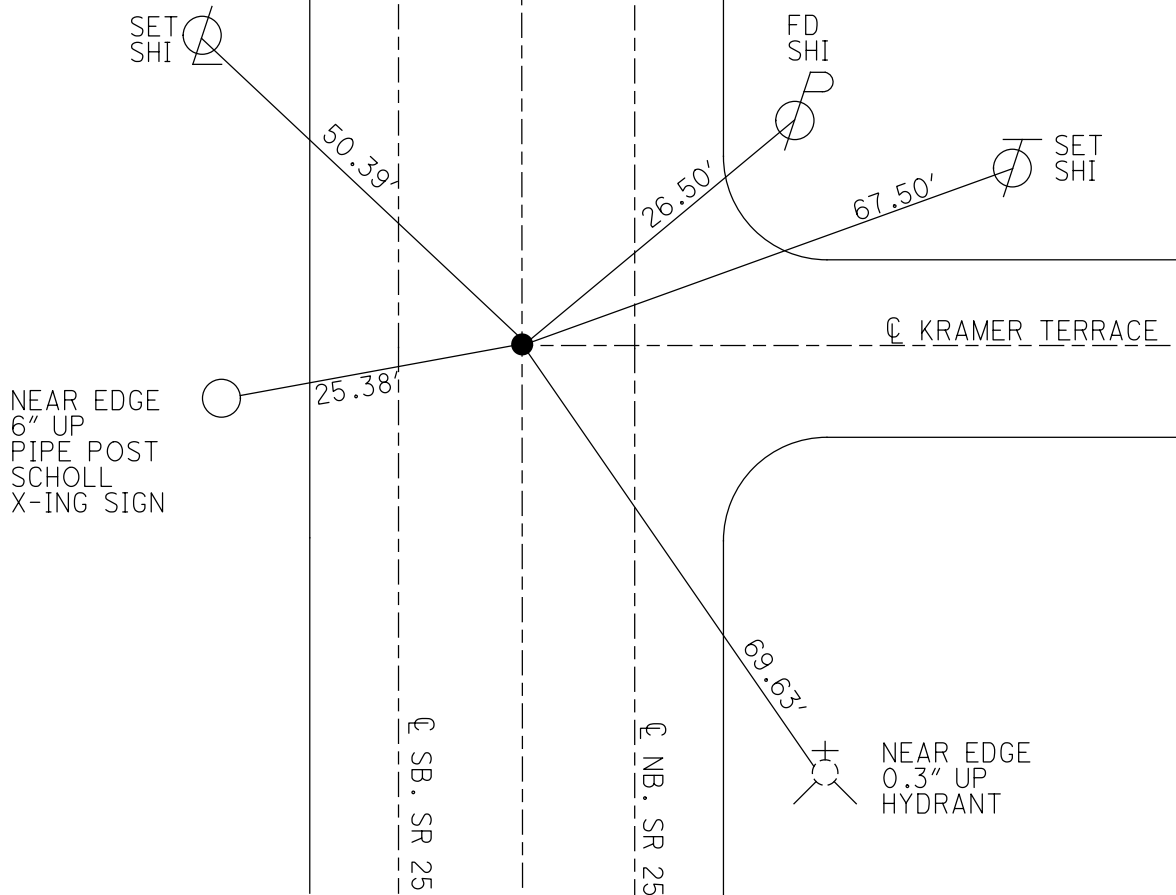
STATION: 501+75

HORZ.DATUM: \_\_\_\_\_ GEOID: \_\_\_\_\_

GRID: NORTHING: \_\_\_\_\_ EASTING: \_\_\_\_\_



RECORD:  
FD P.K.NAIL  
4/14/92, MB  
SET P.K./WASHER  
9/18/92, MB



NEAR EDGE  
6" UP  
PIPE POST  
SCHOLL  
X-ING SIGN

NEAR EDGE  
0.3" UP  
HYDRANT

# O.D.O.T. DISTRICT 2 SURVEY OFFICE

PERSONNEL

REFERENCE NO. 22-E

SHEET 7 OF 22

NOTES BARNHISEL

H.C. VAN DUSEN

DATE 4-14-92

ROUTE U.S. 25

R.C. BARNHISEL

WEATHER Cloudy

COUNTY Wood

TEMP. +40°

TOWNSHIP Plain

SECTION 25

T 5 N R 10 E

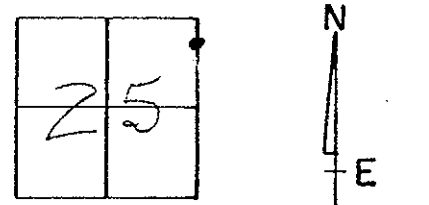
TYPE MONUMENT P.K. NAIL

ON SURFACE - ~~BELOW~~ yes

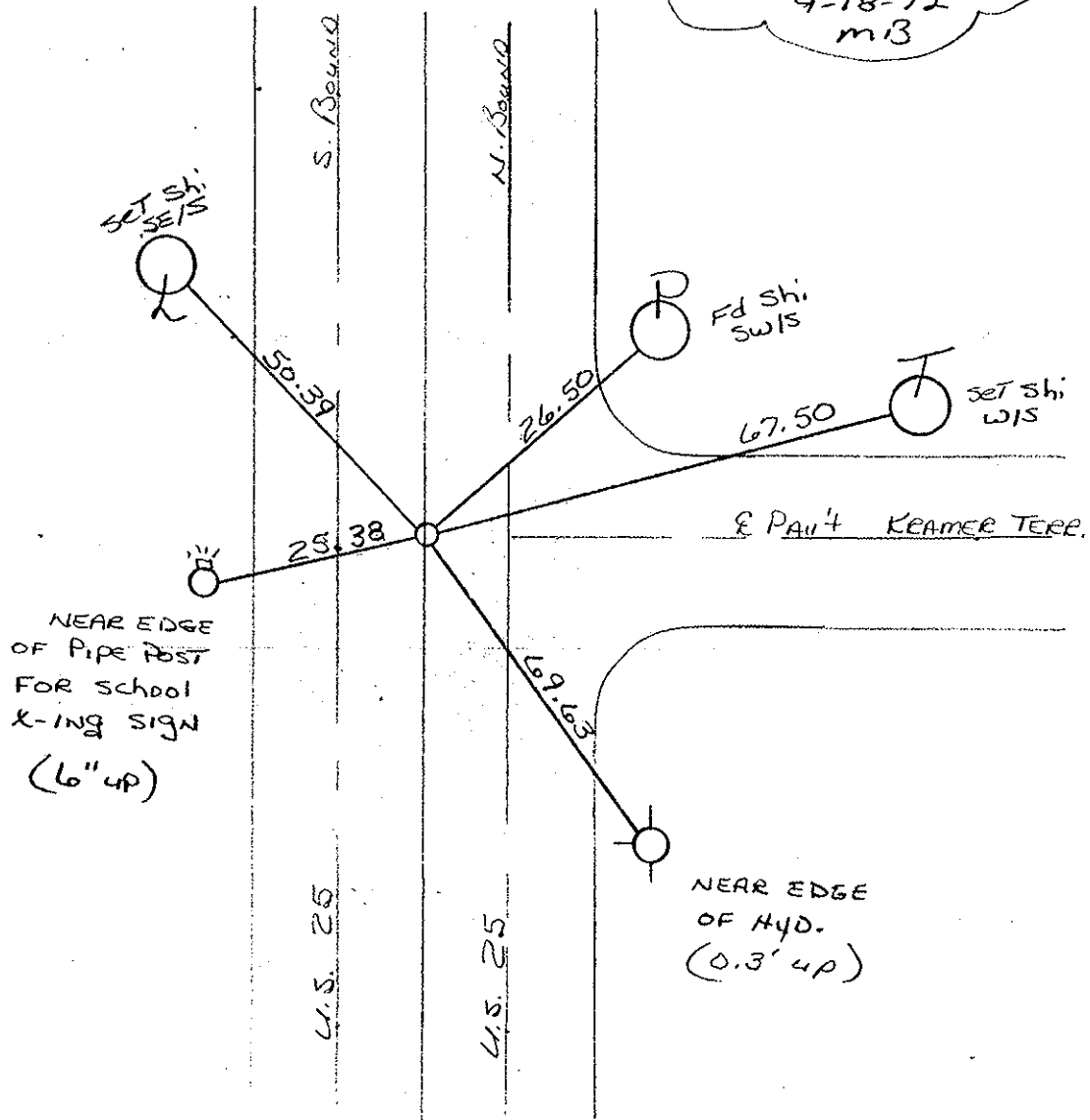
~~LEFT - & PAV'T. - RIGHT~~ yes

~~22.5 TO LT. EDGE PAVEMENT~~ CURB

S.L.M. 501+75



SET PK + WASHER  
9-18-92  
mB



# O.D.O.T. DISTRICT 2 SURVEY OFFICE

PERSONNEL

REFERENCE NO. 22 E

SHEET 7 OF 22

NOTES BARNHISEL

H.C. VAN DUSEN

DATE 4-14-92

ROUTE U.S. 25

R.C. BARNHISEL

WEATHER Cloudy

COUNTY Wood

TEMP. +40°

TOWNSHIP Platt

SECTION 25

T 5 N R 10 E

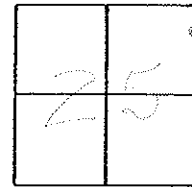
TYPE MONUMENT P.K. NAIL

ON SURFACE - BELOW yes

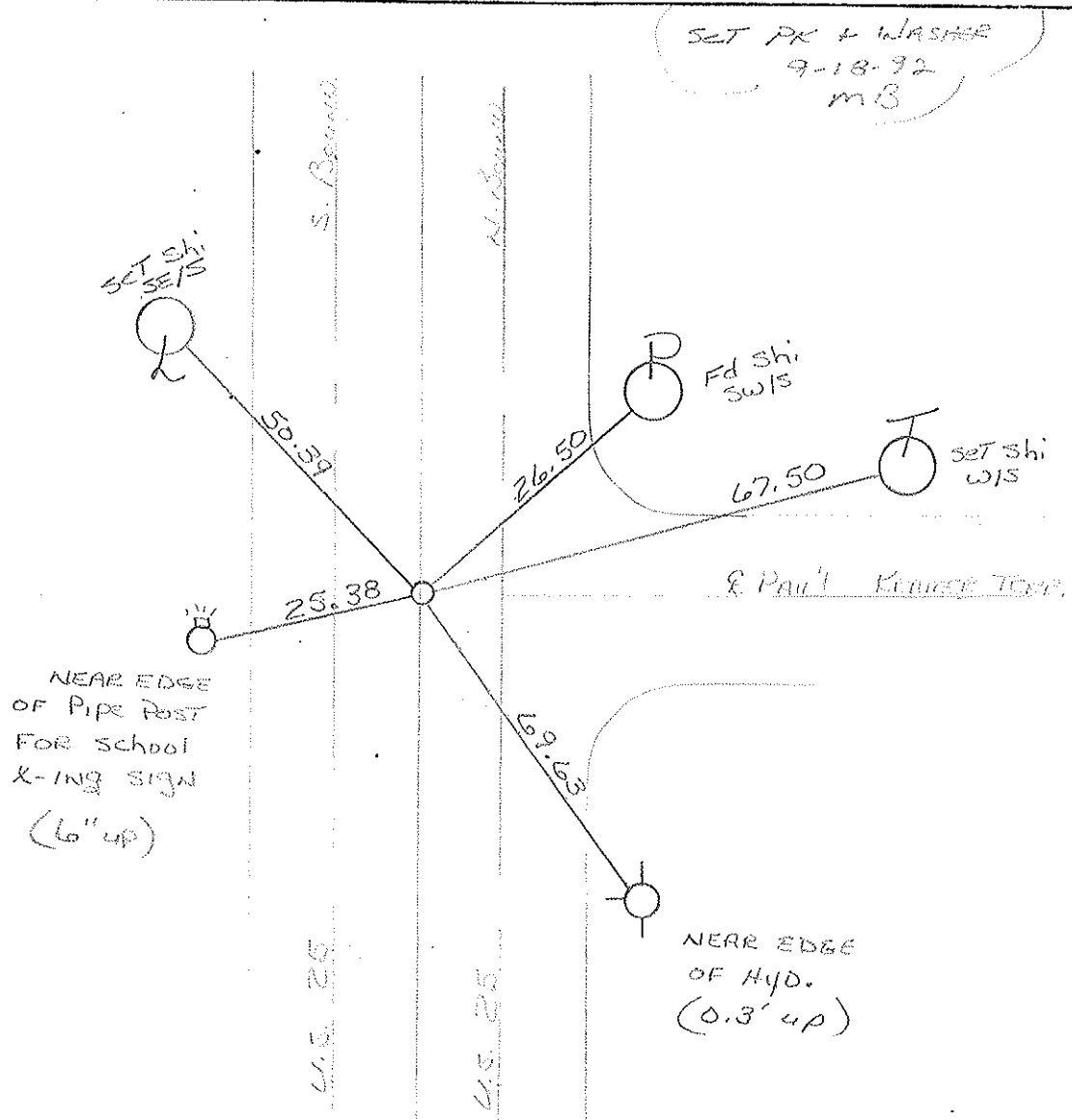
LEFT - & PAV'T. - RIGHT yes

22.3 TO LT EDGE PAVEMENT CURB

S.L.M. 501+75



SET PK & WASHOR  
9-18-92  
MB



O.D.O.T. DISTRICT 2 SURVEY OFFICE

SHEET OF

County WOOD U.S. S.R. 25

Date 3-26-75

Township PLAIN

Weather CLEARING

Section 25

Temp. 28°

T5N, R10E

Personnel BURNSIDE

SMITH

BOWERS

