

O.D.O.T. DISTRICT 2 SURVEY OFFICE (USE ONLY)

PERSONNEL

REFERENCE NO. 22 F

SHEET 13 OF 35

NOTES BARNHISEL

DATE 6/10/92

ROUTE US 25

H.C. VAN DUSEN

WEATHER SUNNY

COUNTY WOOD

R.C. BURNETT

TEMP. 55°

TOWNSHIP PLAIN

SECTION 25

DWG BY RHOADES

PID \_\_\_\_\_

T 5 N R 10 E

TYPE MONUMENT P.K./WASHER

ON SURFACE - ~~BELOW~~ ON

OFFSET ☉ PAVEMENT ON \_\_\_\_\_ LT : RT

22.0' TO LT EDGE PAVEMENT

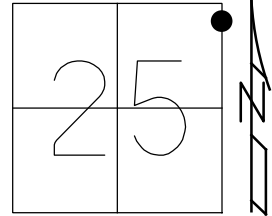
STATION: 505+68

HORZ. DATUM: \_\_\_\_\_

GEOID: \_\_\_\_\_

GRID: NORTHING: \_\_\_\_\_

EASTING: \_\_\_\_\_



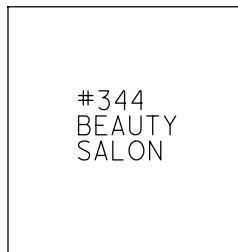
RECORD:  
 FD POINT DESTROYED  
 SET P.K./WASHER  
 6/10/92, MB  
 SET P.K./WASHER  
 9/18/92, MB  
 FD DESTROYED  
 6/14/01



☉ LEHMAN AVE

COR. STONE  
 BLDG.

63.34'



#344  
 BEAUTY  
 SALON

☉ SB. SR 25

☉ NB. SR 25

# O.D.O.T. DISTRICT 2 SURVEY OFFICE

PERSONNEL

REFERENCE NO. 22-F

SHEET 8 OF 22

NOTES BAENHISEL

H.C. VAN DUŠEN

R.C. BURNETT

DATE 6-10-92

WEATHER SUNNY

TEMP. +55°

ROUTE U.S. 25

COUNTY WOOD

TOWNSHIP PLAIN

SECTION 25

T 5 N R 10 E

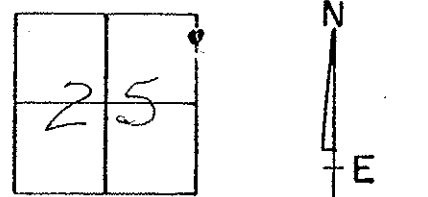
TYPE MONUMENT DESTROYED / RESET P.K. & WASHER RESET FROM OLD TIES

ON SURFACE - ~~BELOW~~ yes

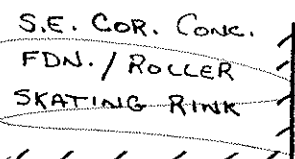
~~SET~~ - E. PAV'T. - ~~RESET~~ yes

22.0 TO LT EDGE PAVEMENT

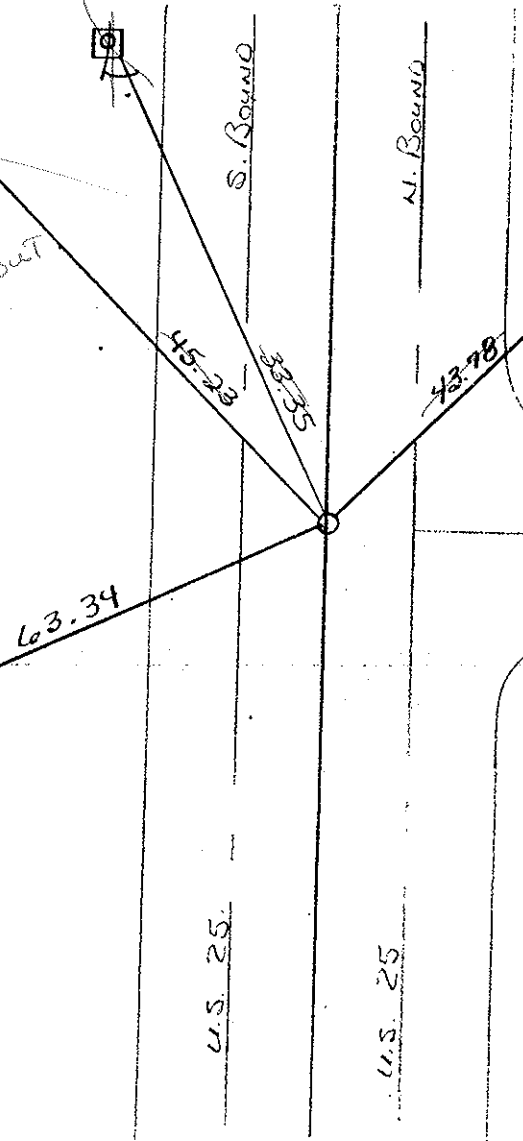
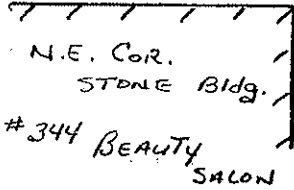
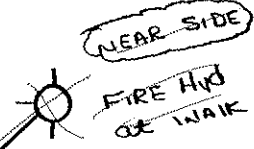
S.L.M. 505+68



SET P.K. & WASHER  
9-18-92  
mB



*Destroyed  
Had this area  
already ground-out  
6-14-01*



E. PAV'T. LEHMAN AVE.

# O.D.O.T. DISTRICT 2 SURVEY OFFICE

PERSONNEL

REFERENCE NO. CF

SHEET 8 OF 22

NOTES BARNHISEL

H.C. VAN DUSEN

R.C. BURNETT

DATE 6-10-92

WEATHER Sunny

TEMP. +55°

ROUTE U.S. 25

COUNTY Wood

TOWNSHIP Plain

SECTION 25

T 5 N R 10 E

TYPE MONUMENT DESTROYED / RESET from old ties

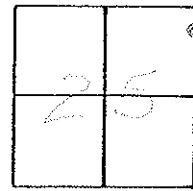
ON SURFACE - BELOW yes

LEFT - CL PAV'T. - RIGHT yes

22.0 TO LT EDGE PAVEMENT

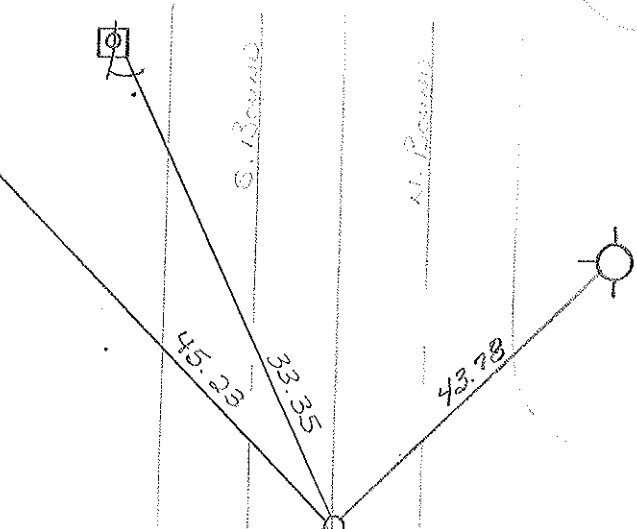
S.L.M. 505+68

P.R. & Washer



S.E. COR. CONC.  
FDN. / ROLLER  
SKATING RINK

N.E. COR.  
STONE Bldg.  
#344 BEAUTY  
SALON



SET P.R. & WASHER  
9-18-92  
MB

NEAR SIDE

FIRE HD  
OR MARK

E. PAUL L. STANARD, AVE.

S. 13th St  
N. 13th St  
U.S. 25  
U.S. 25

O.D.O.T. DISTRICT 2 SURVEY OFFICE

SHEET \_\_\_\_\_ OF \_\_\_\_\_

County WOOD U.S. S.R. 25

Date 3-26-75

Township PLAIN

Weather CLEARING

Section 25

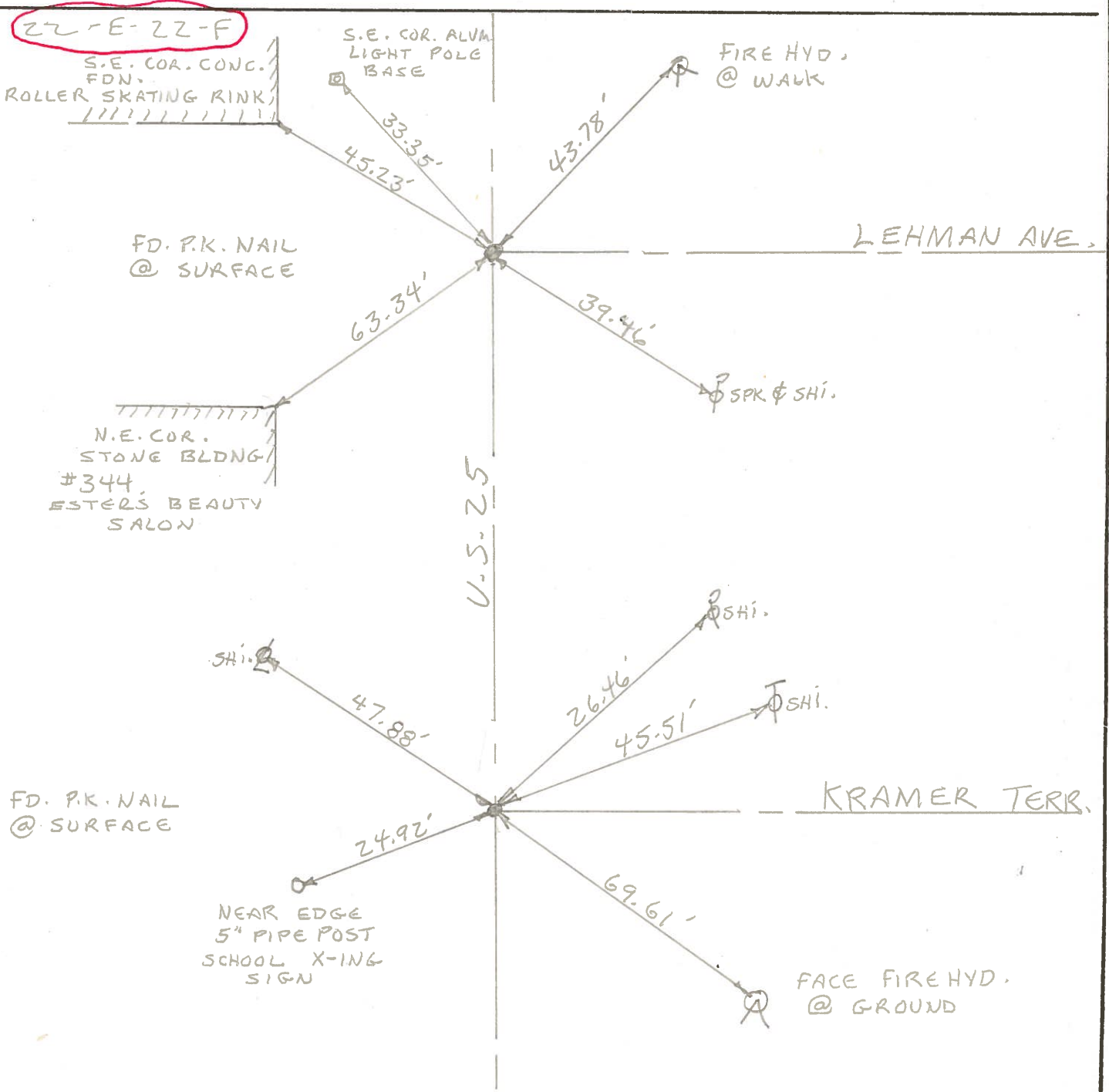
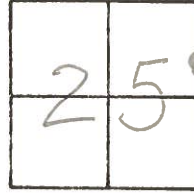
Temp. 28°

T5N, R10E

Personnel BURNSIDE

SMITH

BOWERS



22-E-22-F

S.E. COR. CONC. FDN. ROLLER SKATING RINK

S.E. COR. ALUM. LIGHT POLE BASE

FIRE HYD. @ WALK

FD. P.K. NAIL @ SURFACE

LEHMAN AVE.

N.E. COR. STONE BLDG. #344. ESTER'S BEAUTY SALON

SPK & SHI.

U.S. 25

SHI.

SHI.

SHI.

FD. P.K. NAIL @ SURFACE

KRAMER TERR.

NEAR EDGE 5" PIPE POST SCHOOL X-ING SIGN

FACE FIRE HYD. @ GROUND

PERSONNEL Silvester TITLE \_\_\_\_\_ PERSONNEL \_\_\_\_\_ TITLE \_\_\_\_\_ COUNTY d DATE 4/22/58  
 \_\_\_\_\_ S. R. \_\_\_\_\_ WEATHER \_\_\_\_\_  
Cc SEC. B. TEMP. \_\_\_\_\_  
 DESCRIPTION Napoleon Ed - N. Corp. line JOB NO. \_\_\_\_\_

