

O.D.O.T. DISTRICT 2 SURVEY OFFICE (USE ONLY)

PERSONNEL

REFERENCE NO. 23

SHEET 14 OF 35

NOTES BARNHEISEL

DATE 6/14/01

ROUTE US 25

H.C. CANTERBURY

WEATHER SUNNY

COUNTY WOOD

R.C. MOSE

TEMP. 90°

TOWNSHIP PLAIN

SECTION 25

DWG BY RHOADES

PID \_\_\_\_\_

T 5 N R 10 E

TYPE MONUMENT IPIN

ON SURFACE - ~~BELOW~~ ON \_\_\_\_\_

OFFSET  $\text{C}$  PAVEMENT 1.0' ~~RT~~ : RT

30.3' TO RT EDGE PAVEMENT

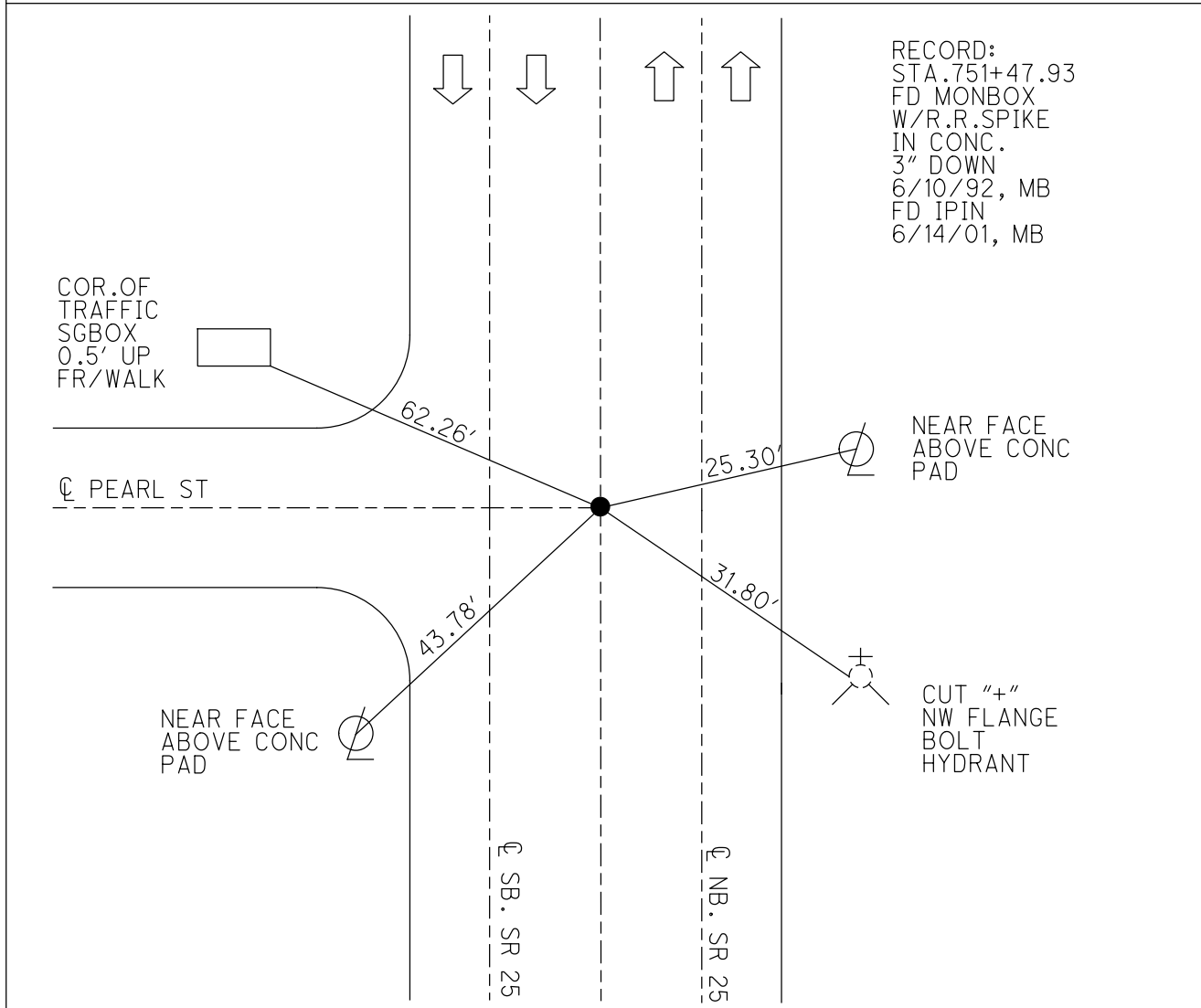
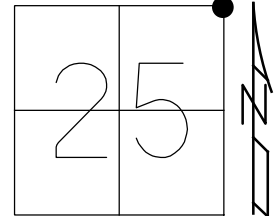
STATION: 509+73

HORZ. DATUM: \_\_\_\_\_

GEOID: \_\_\_\_\_

GRID: NORTHING: \_\_\_\_\_

EASTING: \_\_\_\_\_



# O.D.O.T. DISTRICT 2 SURVEY OFFICE

PERSONNEL

REFERENCE NO. 23

SHEET 9 OF 22

NOTES BARNHISEL

H.C. VAN DUSEN

DATE 6-10-92

ROUTE U.S. 25

R.C. BURNETT

WEATHER SUNNY

COUNTY Wood

TEMP. +62°

TOWNSHIP Plain

SECTION 25

T. 5 N. R. 10 E

TYPE MONUMENT 5m RR Spk in Conc. (in Mon Box)

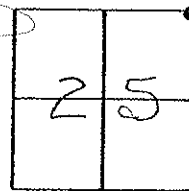
~~ON SURFACE~~ - BELOW 3" SURFACE

~~1.0~~ - 1.0 PAV'T. - RIGHT

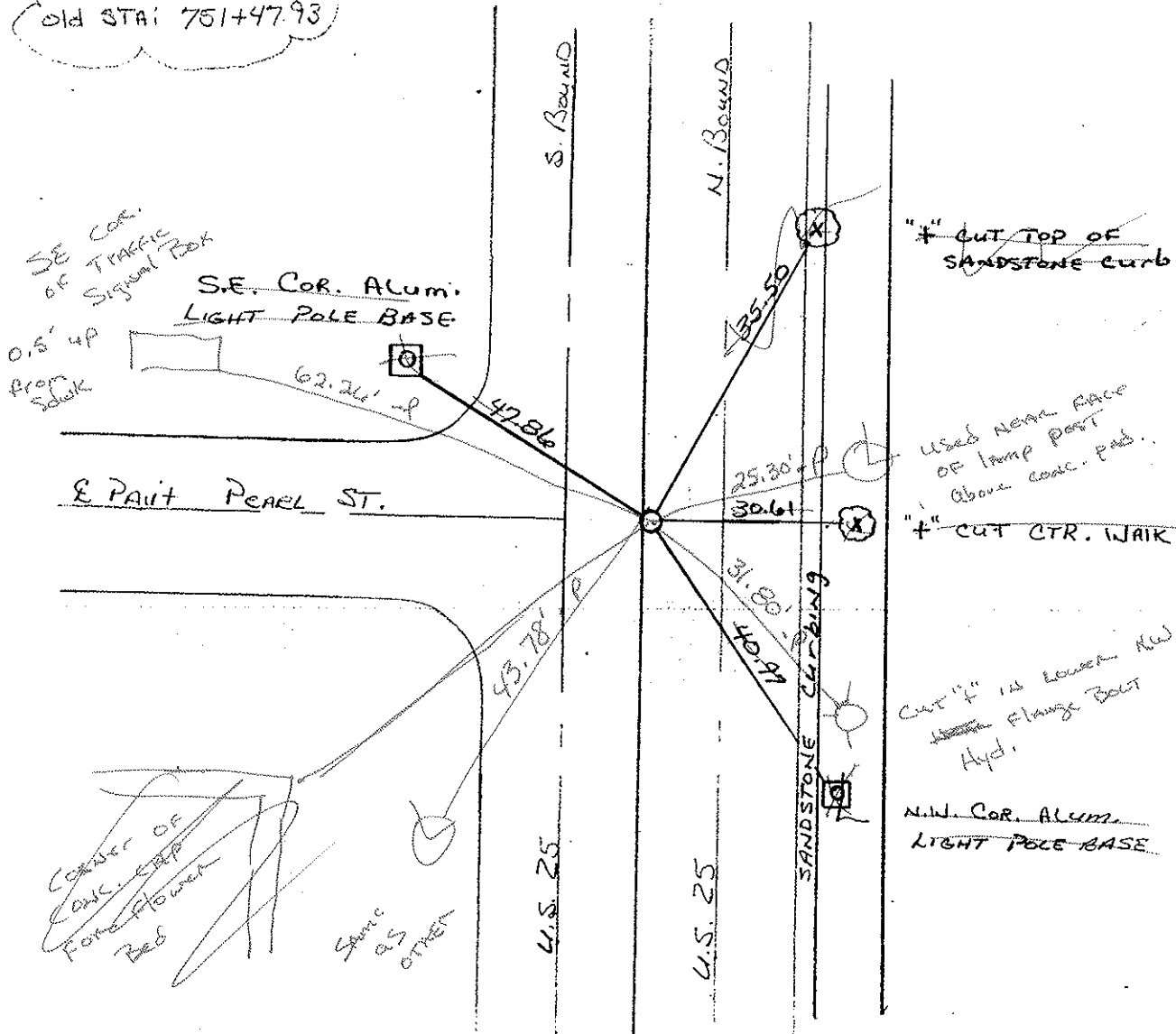
30.3 TO RT EDGE PAVEMENT

S.L.M. 509+73

ON E PAV'T WEST



RECORDED  
old STA: 751+47.93



"+" CUT TOP OF SANDSTONE CURB

USED NEAR FACE OF LAMP POST ABOVE CONC. PAD.

"+" CUT CTR. MARK

CUT "+" IN LOWER NW FLANGE BOLT Hyd.

N.W. COR. ALUM. LIGHT POLE BASE

# O.D.O.T. DISTRICT 2 SURVEY OFFICE

PERSONNEL

REFERENCE NO. 23

SHEET 9 OF 22

NOTES BARNHISEL

H.C. VAN DUSEN

R.C. BURNETT

DATE 6-10-92

WEATHER SUNNY

TEMP. +62°

ROUTE U.S. 25

COUNTY W. Va.

TOWNSHIP Man

SECTION 25

T. S R. 10 E

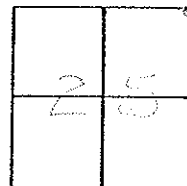
TYPE MONUMENT 5m RR SPK IN CONC. (IN Man Box)

ON SURFACE - BELOW 3"

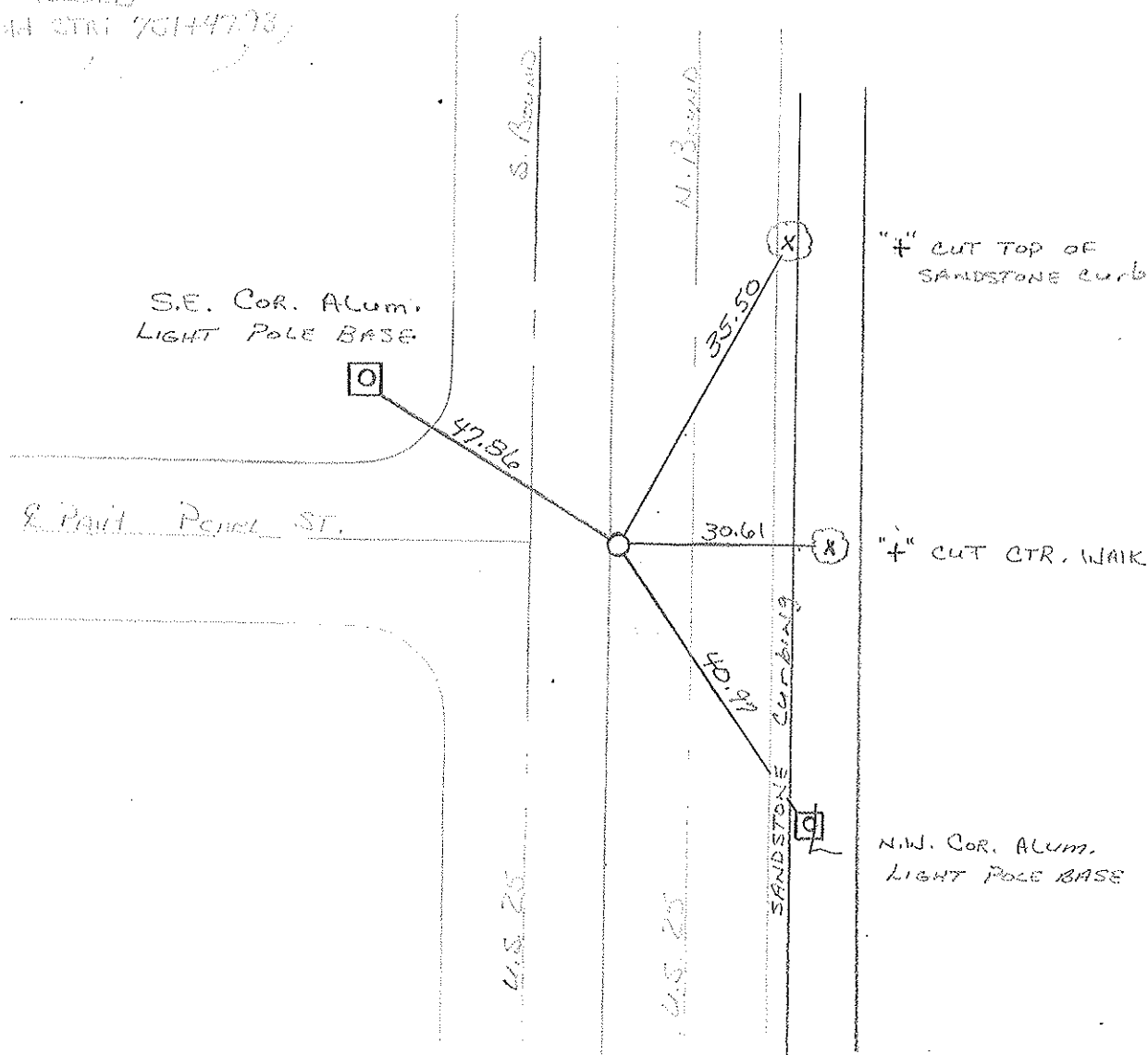
LEFT - C. PAV'T. - RIGHT 1.0

30.3 TO RT EDGE PAVEMENT

S.L.M. 509+73 ON C. PAV'T. WEST



RECORD  
 7014773



O.D.O.T. DISTRICT 2 SURVEY OFFICE

SHEET \_\_\_\_\_ OF \_\_\_\_\_

County WOOD <sup>U.S.</sup> S.R. 25

Date 3-31-75

Township PLAIN

Weather PT. CLOUDY

Section 25

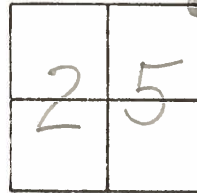
Temp. 26°

T5N, R10E

Personnel BURNSIDE

SMITH

BOWERS



#23

MON. BOX  
(DRILL HOLE IN CONC.)  
(751+ 47.93 OLD STA.)

PEARL ST.

S.E. COR. ALUM.  
LIGHT POLE BASE

48.00'

35.47'

TOP SANDSTONE  
CURB

30.52'

4" CUT  
CTR. WALK

42.10'

40.85'

N.W. COR. ALUM.  
LIGHT POLE BASE

N.E. COR. 6"x6"  
METAL SIGN POST  
@ WALK  
(STATE SAVINGS)  
& LOAN

25

U.S.

PERSONNEL Silvester TITLE \_\_\_\_\_ PERSONNEL \_\_\_\_\_ TITLE \_\_\_\_\_ COUNTY d DATE 4/22/58

Cc \_\_\_\_\_ S. R. \_\_\_\_\_ WEATHER \_\_\_\_\_

DESCRIPTION Napoleon Ed - N. Corp. line SEC. B. TEMP. \_\_\_\_\_

LEFT CENTER LINE RIGHT JOB NO. \_\_\_\_\_

