

O.D.O.T. DISTRICT 2 SURVEY OFFICE (USE ONLY)

PERSONNEL

REFERENCE NO. 24 AA

SHEET 16 OF 35

NOTES BARNHISEL

DATE 6/14/01

ROUTE US 25

H.C. CANTERBURY

WEATHER SUNNY

COUNTY WOOD

R.C. MOSER

TEMP. 90°

TOWNSHIP PLAIN

SECTION 24

DWG BY RHOADES

PID _____

T 5 N R 10 E

TYPE MONUMENT P.K.NAIL

ON SURFACE - ~~BELOW~~ ON

OFFSET $\text{\textcircled{C}}$ PAVEMENT 1.0' LT : RT

- TO - EDGE PAVEMENT

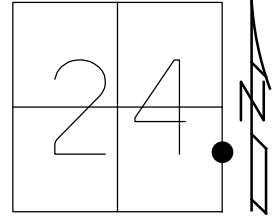
STATION: 526+91

HORZ.DATUM: _____

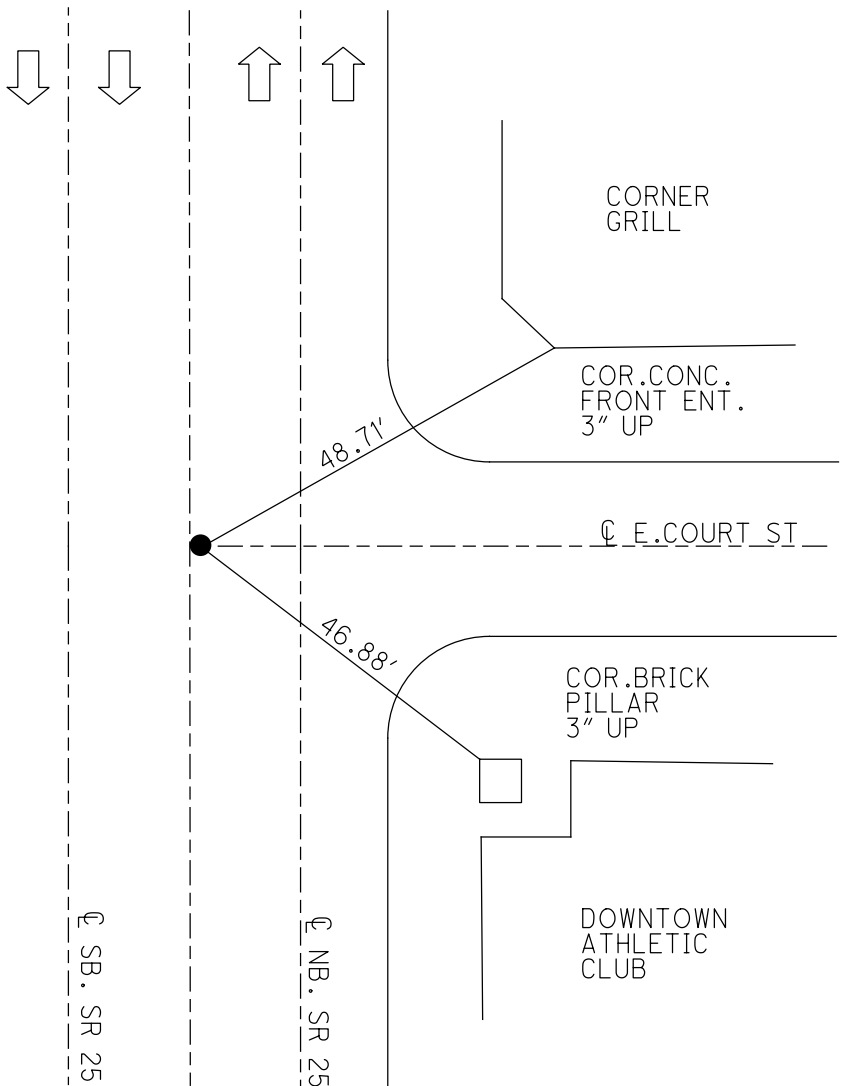
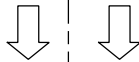
GEOID: _____

GRID: NORTHING: _____

EASTING: _____



RECORD:
FD P.K.NAIL
6/10/92, MB
SET P.K./WASHER
9/18/92, MB
FD P.K.NAIL
6/14/01, MB



O.D.O.T. DISTRICT 2 SURVEY OFFICE

PERSONNEL

REFERENCE NO. 24-A, A SHEET 11 OF 22

NOTES BARNHISEL

H.C. VAN DUSEN

R.C. KUSZ

DATE 6-10-92

WEATHER SUNNY

TEMP. +65°

ROUTE U.S. 25

COUNTY WOOD

TOWNSHIP PLAIN

SECTION 24

T 5 N R 10 E

TYPE MONUMENT P.K. NAIL

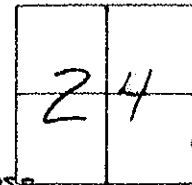
ON SURFACE - ~~BELOW~~ YES

~~BELOW~~ - E PAV'T. - RIGHT 1.0

- TO - EDGE PAVEMENT

S.L.M. 526 + 91

ON E U.S. 25 + E EAST



Set PK + WASHER

9-18-92

MB

E PAV'T W. COURT ST.

S. Bound

N. Bound

CORNER GRILL

CORNER OF CONC. AT FRONT ENT. 3" UP FROM WALK

48.71

Fd "+" cut on top Bolt of Hyd. EIS



35.84

E PAV'T EAST COURT ST.

GONE

USED NEAR SIDE PARKING METER POST AT WALK



36.37

46.88

COR. OF BRK PILLAR 3" UP FROM WALK

DOWNTOWN

ATHLETIC Club

U.S. 25

U.S. 25

O.D.O.T. DISTRICT 2 SURVEY OFFICE

PERSONNEL

REFERENCE NO. 24-A, A SHEET 11 OF 22

NOTES BARNHISEL

H.C. VAN DUSEN

R.C. KUSZ

DATE 6-10-92

WEATHER SUNNY

TEMP. +65°

ROUTE U.S. 25

COUNTY WOOD

TOWNSHIP PLAIN

SECTION 24

T. 5 N. R. 10 E.

TYPE MONUMENT P.K. NAIL

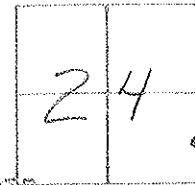
ON SURFACE - ~~REBAR~~ YES

~~REBAR~~ - C. PAV'T. - RIGHT 1.0

- JO. - EDGE PAVEMENT

S.L.M. 526 + 91

ON & U.S. 25 + E EAST

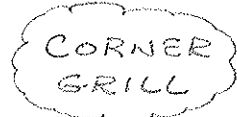


Set PK & WASHER
9-18-92
MB

E PAVT W. COURT ST.

S. Bound

N. Bound



CORNER OF CONC. AT
FRONT ENT.
3" UP FROM WALK

48.71

Fd "x" cut out
TOP BOLT OF HYD.
E/S

35.84

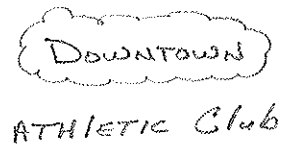
E PAVT EAST COURT ST.

36.37

46.88

USED NEAR SIDE
PARKING METERS
POST AT WALK

COR. OF BRK PILLAR
3" UP FROM WALK



U.S. 25

U.S. 25