

O.D.O.T. DISTRICT 2 SURVEY OFFICE (USE ONLY)

PERSONNEL

REFERENCE NO. 24 A

SHEET 17 OF 35

NOTES BARNHISEL DATE 6/14/01
H.C. CANTERBURY WEATHER SUNNY
R.C. MOSER TEMP. 90°

ROUTE US 25
COUNTY WOOD
TOWNSHIP PLAIN
SECTION 24

DWG BY RHOADES PID _____

T 5 N R 10 E

TYPE MONUMENT P.K.NAIL

ON SURFACE - ~~BELOW~~ ON _____

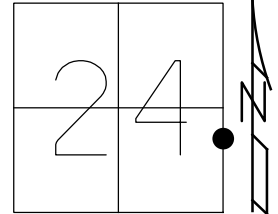
OFFSET C PAVEMENT 1.0' ~~±~~ : RT

27.7' TO LT EDGE PAVEMENT

STATION: 529+65

HORIZ.DATUM: _____ GEOID: _____

GRID: NORTHING: _____ EASTING: _____



RECORD:
FD P.K.NAIL
6/10/92
SET P.K./WASHER
9/18/92, MB
D.N.F.
6/14/01, MB



C W.OAK ST

C SB. SR 25

C NB. SR 25

O.D.O.T. DISTRICT 2 SURVEY OFFICE

PERSONNEL

REFERENCE NO. 24-A

SHEET 12 OF 22

NOTES BARNHISEL

6-14-01

H.C. VAN DUSEN MC

DATE 6-10-92

ROUTE U.S. 25

R.C. BARNHISEL Noser

WEATHER SUNNY

COUNTY WOOD

TEMP. +65° 90°

TOWNSHIP PLAIN

SECTION 24

T 5 N R 10 E

W. OAK E. OAK

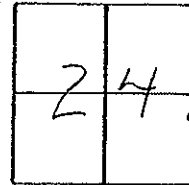
TYPE MONUMENT PK & MON. BOX

ON SURFACE - YES YES ON E EAST

1.0 1.0

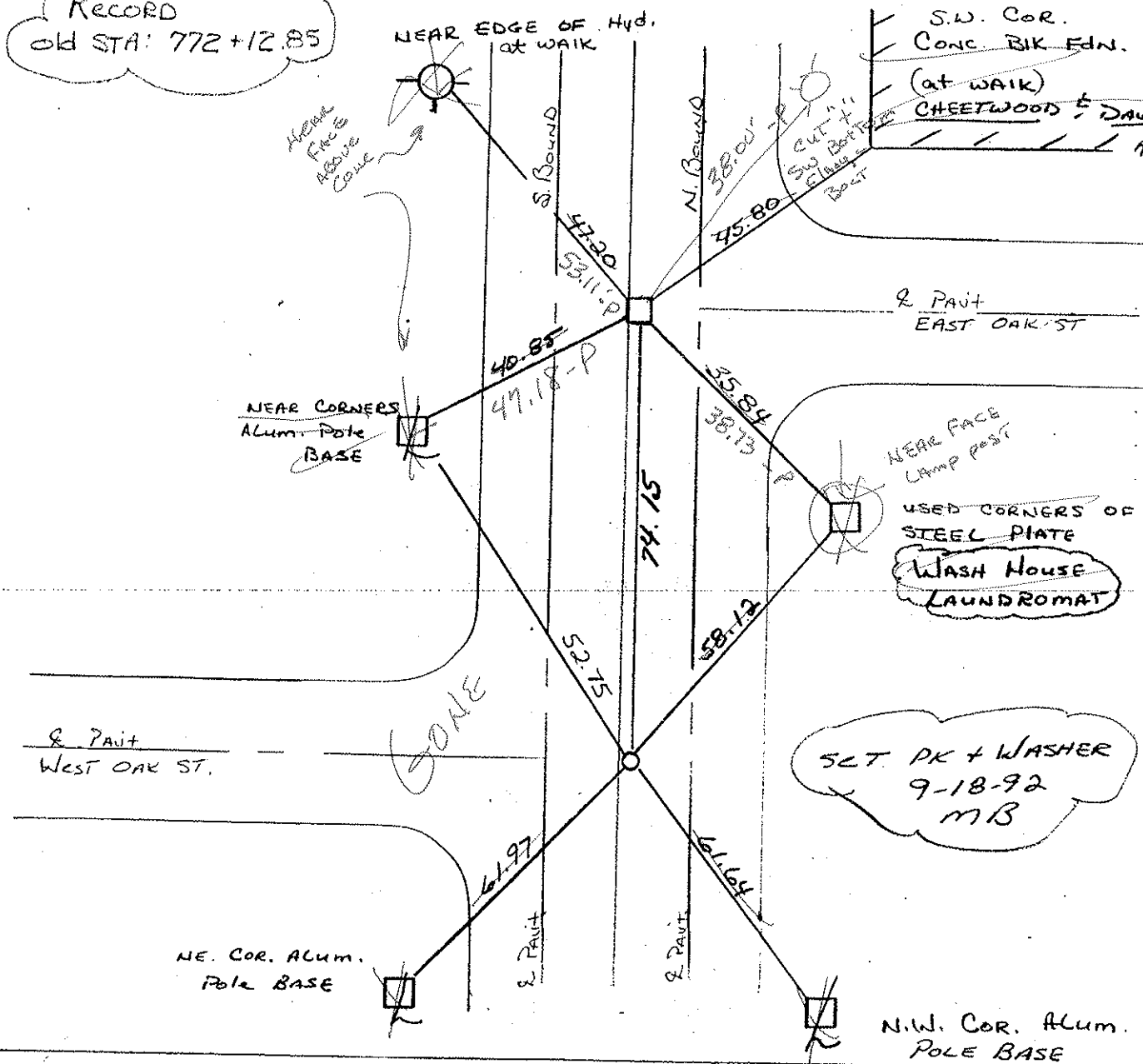
TO RT EDGE PAVEMENT

S.L.M. 529+65 530+39



W. OAK 27.7
E. OAK 27.6

RECORD
old STA: 772+12.85



O.D.O.T. DISTRICT 2 SURVEY OFFICE

PERSONNEL

REFERENCE NO. 24-A

SHEET 12 OF 22

NOTES BARNWISSEL

H.C. VAN DUSEN

DATE 6-10-92

ROUTE U.S. 25

R.C. BARNWISSEL

WEATHER SUNNY

COUNTY WOOD

TEMP. +65°

TOWNSHIP PLAIN

SECTION 24

T 5 N R 10 E

W. OAK E. OAK

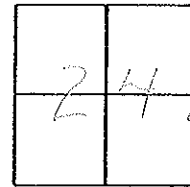
TYPE MONUMENT PK & Mon. Box

ON SURFACE - ~~BLW~~ yes yes ON 9 EAST

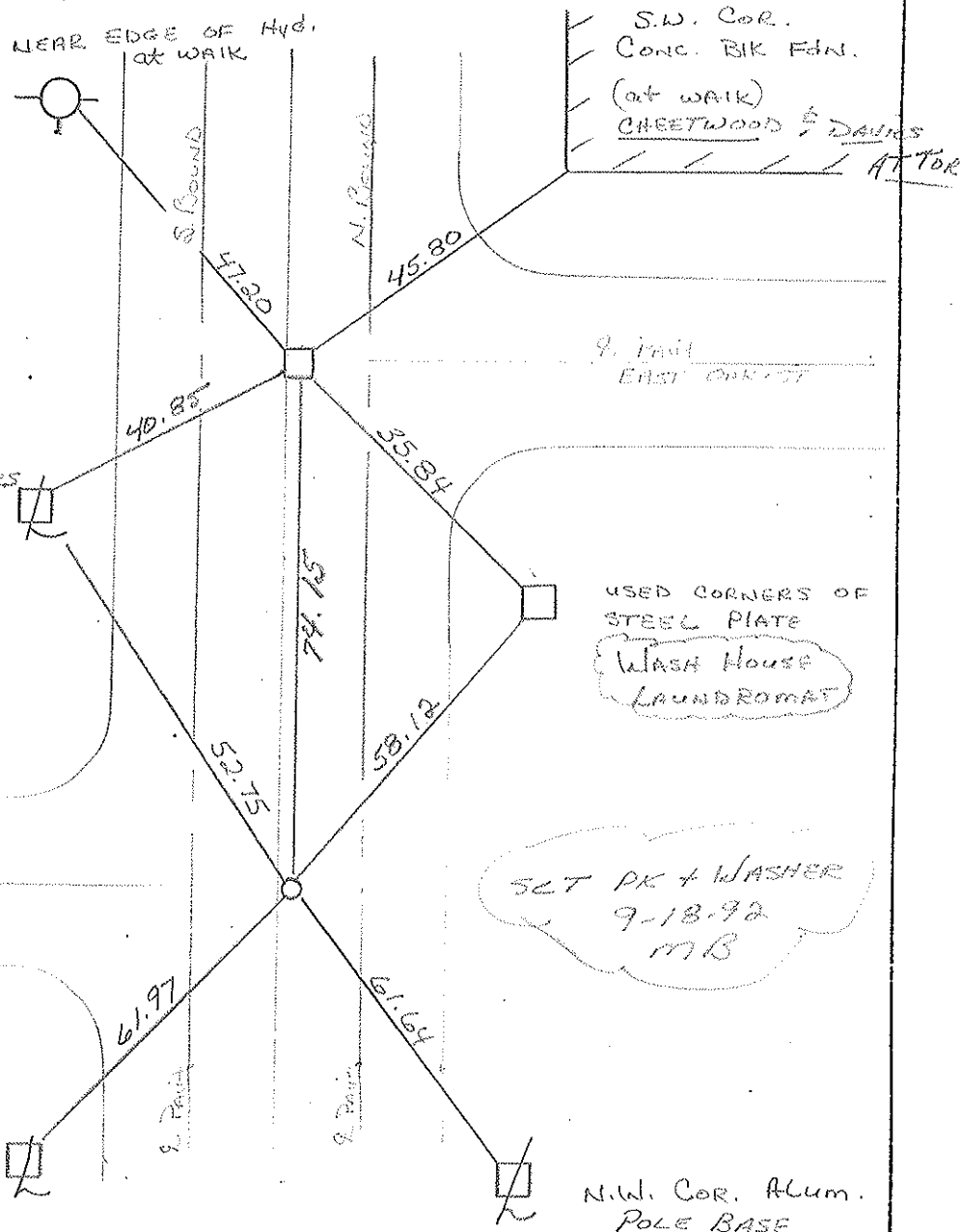
~~LEFT~~ - LT PAV'T. - RT 1.0 1.0

W. OAK 27.7 E. OAK 27.6 TO LT RT EDGE PAVEMENT

S.L.M. 529+65 & 530+39



*Record
old 911: 71211685*



O.D.O.T. DISTRICT 2 SURVEY OFFICE

SHEET _____ OF _____

County WOOD ^{U.S.} S.R. 25

Date 3-31-75

Township PLAIN

Weather PT. CLOUDY

Section 24

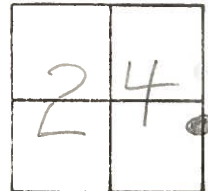
Temp. 26°

T5N, R10E

Personnel BURNSIDE

SMITH

BOWERS



24-A

NEAR EDGE
FIRE HYD. @ WALK

S.W. COR. CONC. BLK. FDN.
(B.B. & R. MOTION PERFORMANCE)

MON. BOX
(DRILL HOLE IN CONC.)
(772+12.85 OLD STA.)

EAST OAK ST.

NEAR CORNER
ALUM. LIGHT
POLE BASE

NEAR CORNER
ALUM. LIGHT
POLE BASE

WEST OAK ST.

FD SMALL SPIKE
@ SURFACE

N.E. COR. ALUM.
LIGHT POLE BASE

N.W. COR. ALUM.
LIGHT POLE BASE

25
74.07'
U.S.

47.28'

45.88'

40.79'

39.17'

52.74'

56.04'

62.04'

61.71'

PERSONNEL Silvester TITLE _____ PERSONNEL _____ TITLE _____ COUNTY d DATE 4/22/58
 _____ S. R. _____ WEATHER _____
Cc SEC. B. TEMP. _____
 DESCRIPTION Napoleon Ed - N. Corp. / Inc. JOB NO. _____

