

O.D.O.T. DISTRICT 2 SURVEY OFFICE (USE ONLY)

PERSONNEL

REFERENCE NO. 24 AB

SHEET 18 OF 35

NOTES BARNHISEL

DATE 6/14/01

ROUTE US 25

H.C. CANTERBURY

WEATHER SUNNY

COUNTY WOOD

R.C. MOSER

TEMP. 90°

TOWNSHIP PLAIN

SECTION 24

DWG BY RHOADES

PID \_\_\_\_\_

T 5 N R 10 E

TYPE MONUMENT MONBOX

ON SURFACE - ~~BELOW~~ ON

OFFSET  $\odot$  PAVEMENT 1.0' ~~±~~ : RT

27.6' TO RT EDGE PAVEMENT

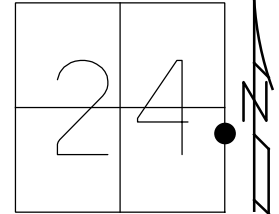
STATION: 530+39

HORZ. DATUM: \_\_\_\_\_

GEOID: \_\_\_\_\_

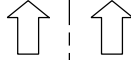
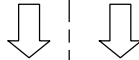
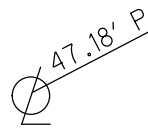
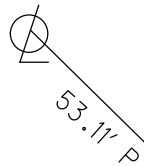
GRID: NORTHING: \_\_\_\_\_

EASTING: \_\_\_\_\_

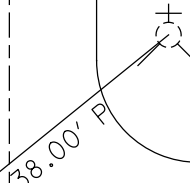


RECORD:  
FD MONBOX  
6/10/92, MB  
6/14/01, MB

NEAR FACE  
LPOLES  
ABOVE CONC.



**M**



CUT "+"  
SW FLANGE  
BOLT  
HYDRANT

$\odot$  E. OAK ST

$\odot$  SB. SR 25

$\odot$  NB. SR 25

# O.D.O.T. DISTRICT 2 SURVEY OFFICE

PERSONNEL

REFERENCE NO. 24-A

SHEET 12 OF 22

NOTES BARNHISEL

6-14-01

H.C. VAN DUSEN MC

DATE 6-10-92

ROUTE U.S. 25

R.C. BARNHISEL Noser

WEATHER SUNNY

COUNTY WOOD

TEMP. +65° 90°

TOWNSHIP PLAIN

SECTION 24

T 5 N R 10 E

W. OAK                      E. OAK

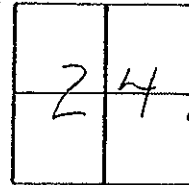
TYPE MONUMENT PK & MON. BOX

ON SURFACE - ~~XXXX~~ YES                      YES                      ON E EAST

~~XXXX~~ T - C PAV'T. - RIGHT 1.0                      1.0

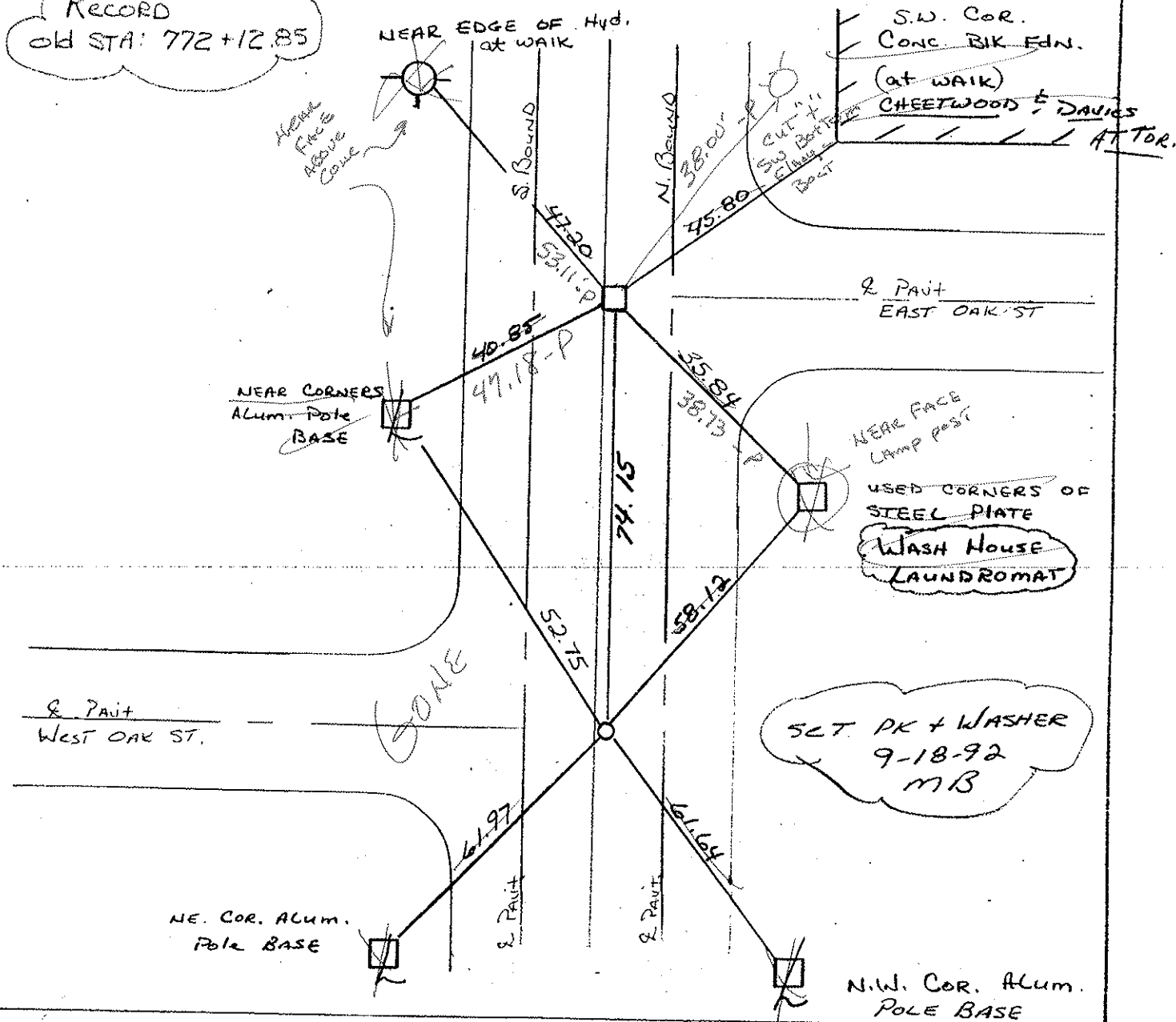
TO RT EDGE PAVEMENT

S.L.M. 529+65                      & 530+39



W. OAK 27.7  
E. OAK 27.6

RECORD  
Old STA: 772+12.85



# O.D.O.T. DISTRICT 2 SURVEY OFFICE

PERSONNEL

REFERENCE NO. 24-A

SHEET 12 OF 22

NOTES BARNWISSEL

H.C. VAN DUSEN

DATE 6-10-92

ROUTE U.S. 25

R.C. BARNWISSEL

WEATHER SUNNY

COUNTY WOOD

TEMP. +65°

TOWNSHIP PLAIN

SECTION 24

T 5 N R 10 E

W. OAK                      E. OAK

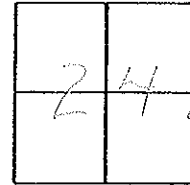
TYPE MONUMENT PK & Mon. Box

ON SURFACE - ~~BLW~~ yes      yes      ON 9 EAST

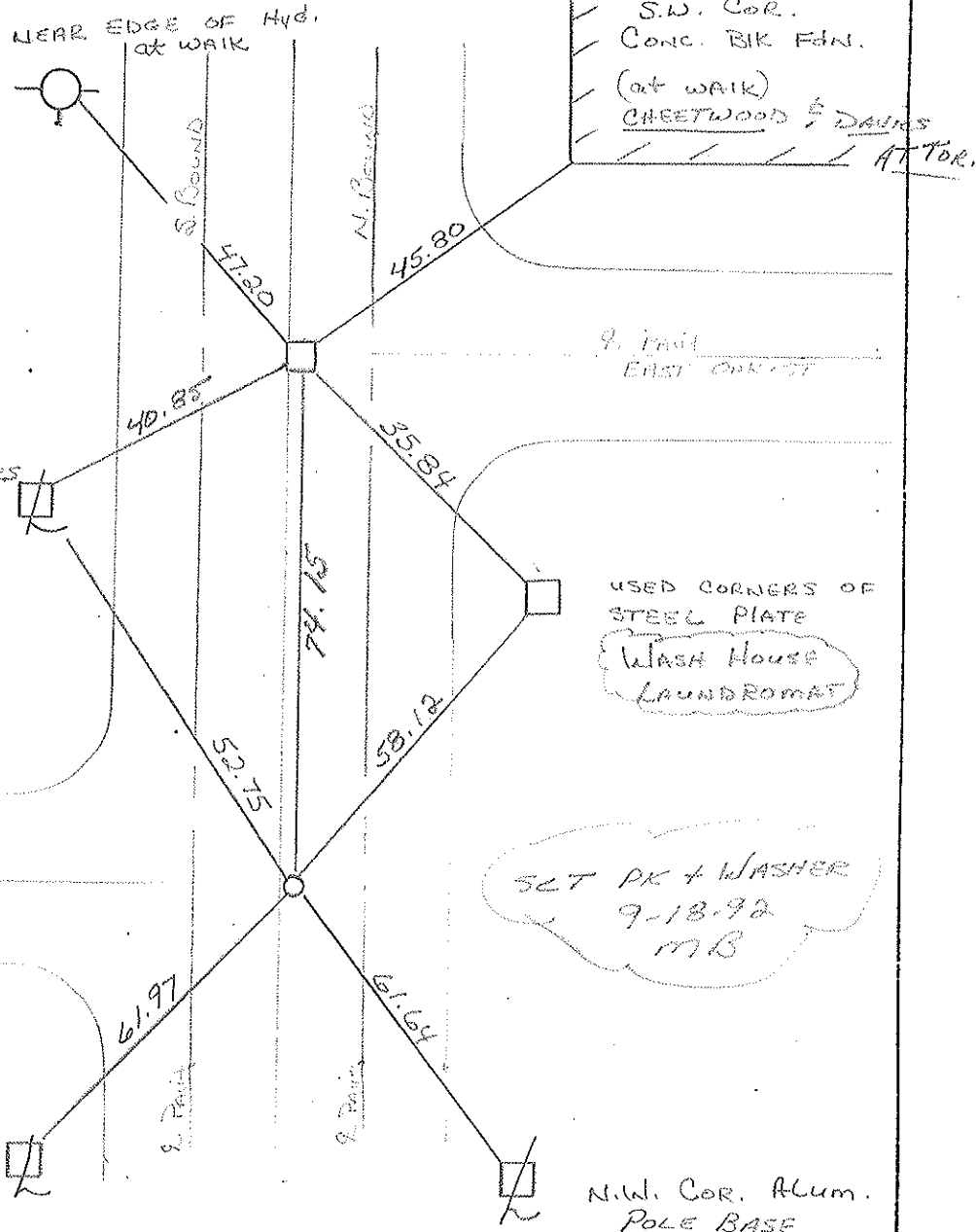
~~LEFT~~ - LT PAV'T. - RT RIGHT 1.0      1.0

W. OAK 27.7 E. OAK 27.6 TO LT RT EDGE PAVEMENT

S.L.M. 529+65 & 530+39



*Record  
old 911: 71211685*



O.D.O.T. DISTRICT 2 SURVEY OFFICE

SHEET \_\_\_\_\_ OF \_\_\_\_\_

County WOOD <sup>U.S.</sup> S.R. 25

Date 3-31-75

Township PLAIN

Weather PT. CLOUDY

Section 24

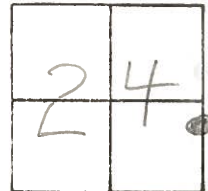
Temp. 26°

T5N, R10E

Personnel BURNSIDE

SMITH

BOWERS



24-A

NEAR EDGE  
FIRE HYD. @ WALK

S.W. COR. CONC. BLK. FDN.  
(B.B. & R. MOTION PERFORMANCE)

MON. BOX  
(DRILL HOLE IN CONC.)  
(772+12.85 OLD STA.)

EAST OAK ST.

NEAR CORNER  
ALUM. LIGHT  
POLE BASE

NEAR CORNER  
ALUM. LIGHT  
POLE BASE

WEST OAK ST.

FD SMALL SPIKE  
@ SURFACE

N.E. COR. ALUM.  
LIGHT POLE BASE

N.W. COR. ALUM.  
LIGHT POLE BASE

25  
74.07'  
U.S.

47.28'

45.88'

40.79'

39.17'

52.74'

56.04'

62.04'

61.71'

PERSONNEL Silvester TITLE \_\_\_\_\_ PERSONNEL \_\_\_\_\_ TITLE \_\_\_\_\_ COUNTY d DATE 4/22/58  
 \_\_\_\_\_ S. R. \_\_\_\_\_ WEATHER \_\_\_\_\_  
 \_\_\_\_\_ SEC. B. TEMP. \_\_\_\_\_  
 DESCRIPTION Napoleon Ed - N. Corp. Inc. JOB NO. \_\_\_\_\_

