

O.D.O.T. DISTRICT 2 SURVEY OFFICE (USE ONLY)

PERSONNEL

REFERENCE NO. 24 B

SHEET 19 OF 35

NOTES BARNHISEL

DATE 6/14/01

ROUTE US 25

H.C. CANTERBURY

WEATHER SUNNY

COUNTY WOOD

R.C. MOSE

TEMP. 90°

TOWNSHIP PLAIN

SECTION 24

DWG BY RHOADES

PID _____

T 5 N R 10 E

TYPE MONUMENT MONBOX

ON SURFACE - ~~BELOW~~ ON

OFFSET \varnothing PAVEMENT ON LT : RT

- TO - EDGE PAVEMENT

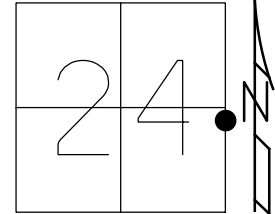
STATION: 534+70

HORIZ.DATUM: _____

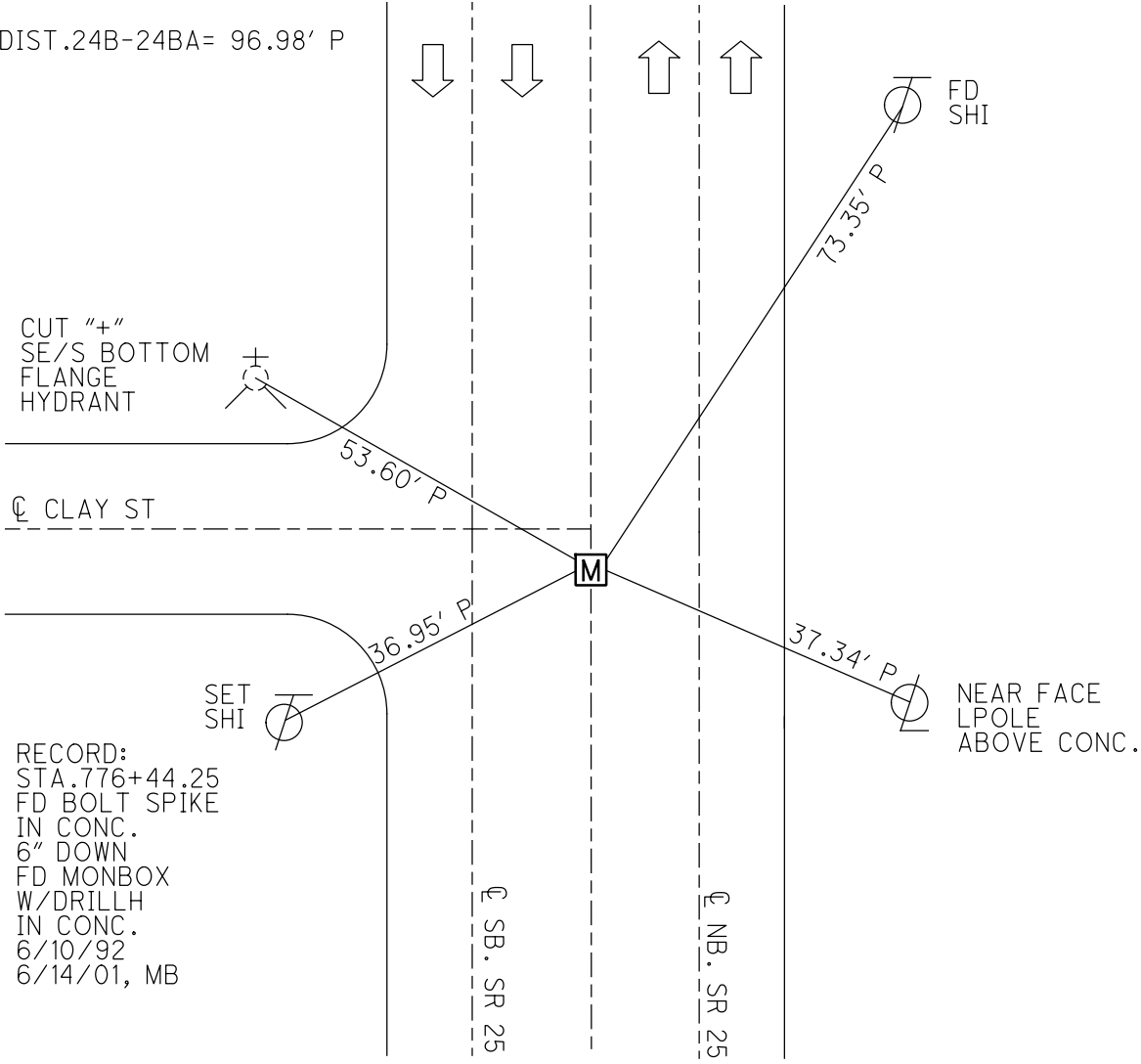
GEOID: _____

GRID: NORTHING: _____

EASTING: _____



DIST.24B-24BA= 96.98' P



CUT "+"
SE/S BOTTOM
FLANGE
HYDRANT

\varnothing CLAY ST

SET
SHI

RECORD:
STA. 776+44.25
FD BOLT SPIKE
IN CONC.
6" DOWN
FD MONBOX
W/DRILLH
IN CONC.
6/10/92
6/14/01, MB

\varnothing SB. SR 25

\varnothing NB. SR 25

NEAR FACE
LPOLE
ABOVE CONC.

O.D.O.T. DISTRICT 2 SURVEY OFFICE

PERSONNEL

REFERENCE NO. 24-B

SHEET 13 OF 22

NOTES BARNHISEL ✓

6-14-01

H.C. VAN DUSEN MC

DATE 6-10-92

ROUTE U.S. 25

R.C. BARNHISEL Km

WEATHER SUNNY

COUNTY WOODS

TEMP. +65° 90

TOWNSHIP PLAIN

SECTION 24

T 5 N R 10 E

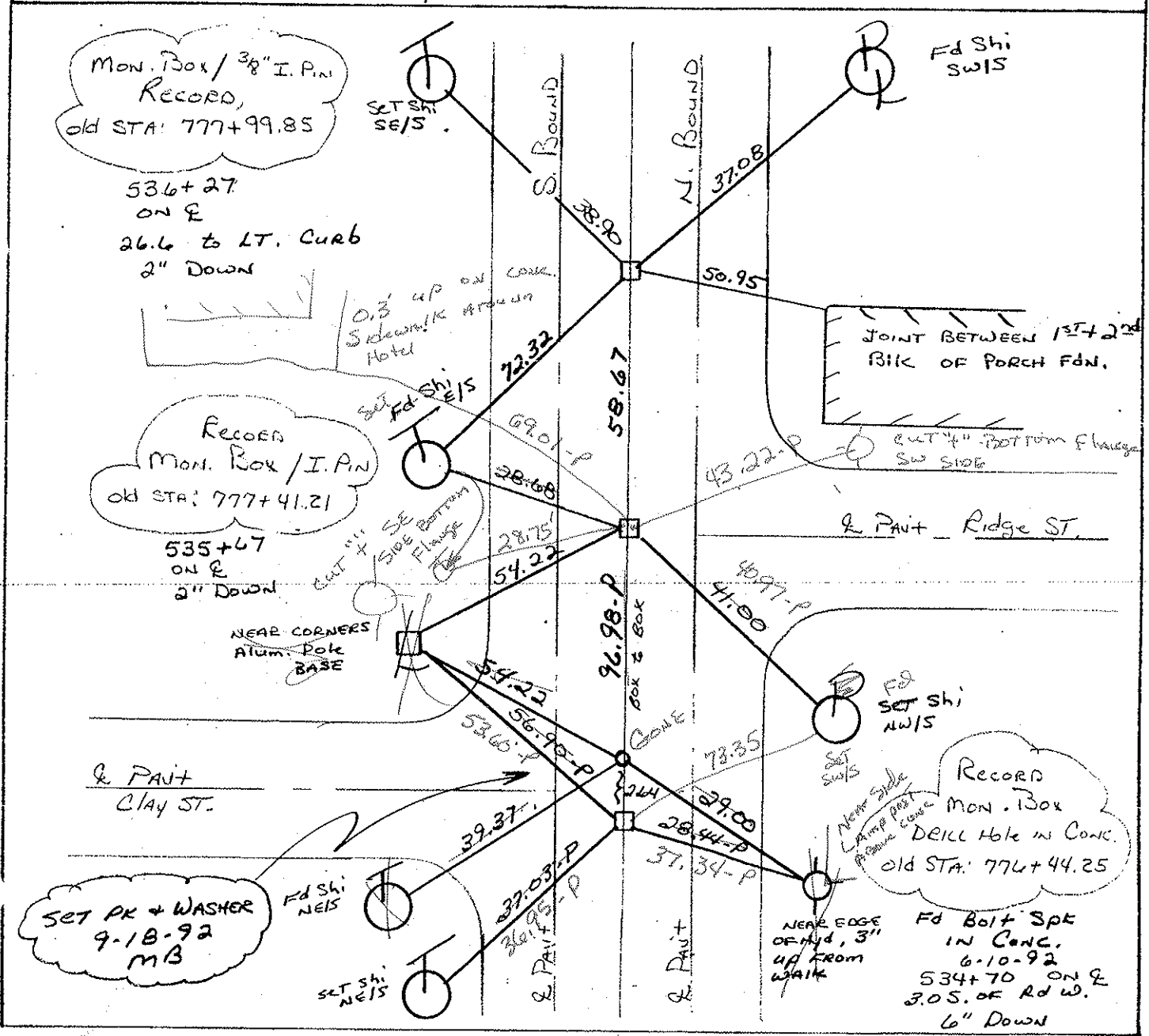
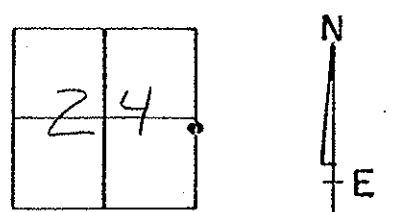
TYPE MONUMENT Mon. Boxes.

~~ON SURFACE~~ - BELOW ALL

~~LEFT - & PAV'T. - RIGHT~~ yes (ALL)

- TO - EDGE PAVEMENT

S.L.M. 534+70 / 537+67 / 536+27



O.D.O.T. DISTRICT 2 SURVEY OFFICE

PERSONNEL

REFERENCE NO. 24-B

SHEET 13 OF 22

NOTES BARNHISEL

H.C. VAN DUSEN

DATE 6-10-92

ROUTE U.S. 25

R.C. BARNHISEL

WEATHER SUNNY

COUNTY WOOD

TEMP. +65°

TOWNSHIP Plain

SECTION 24

T 5 R 10 E

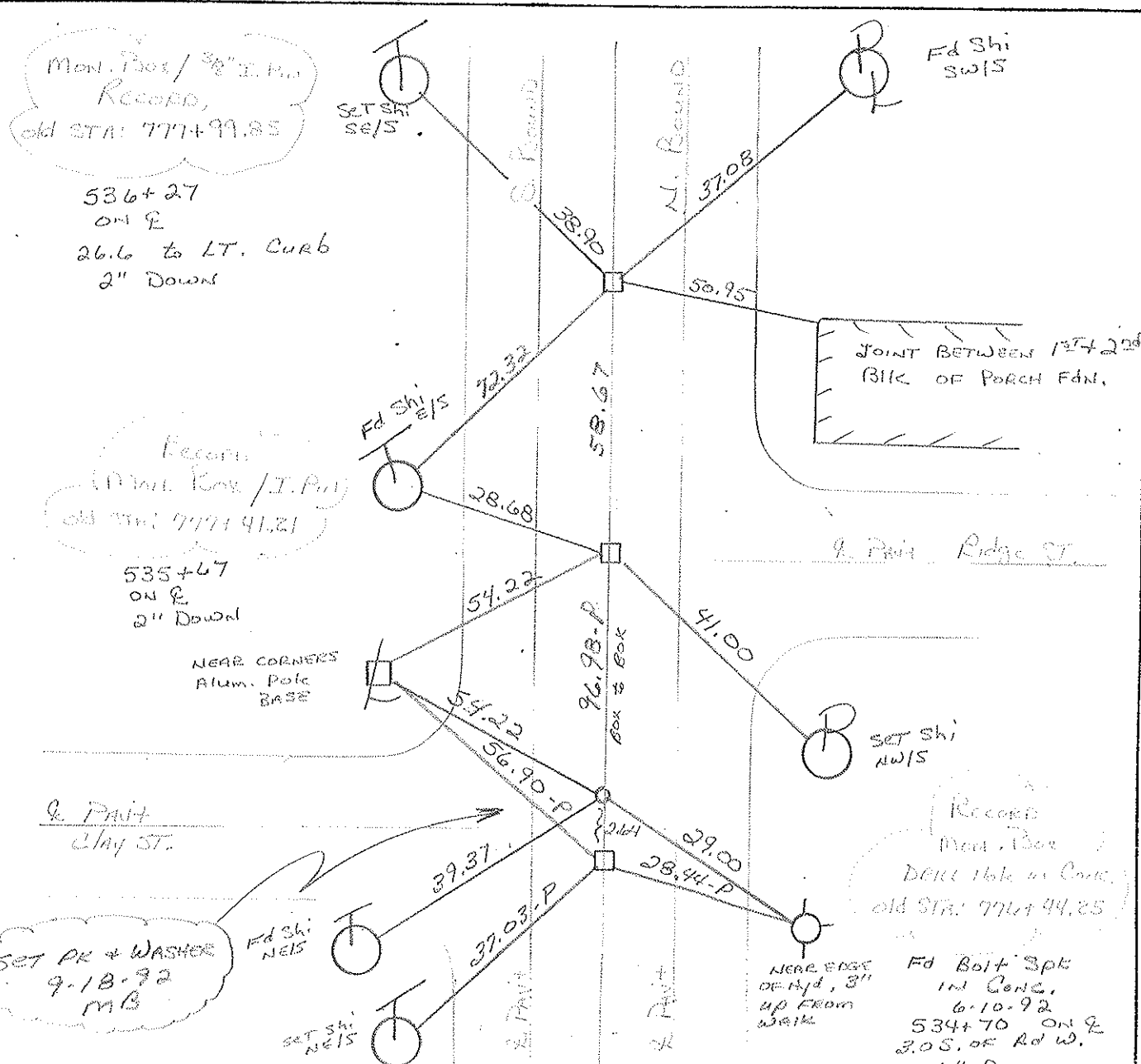
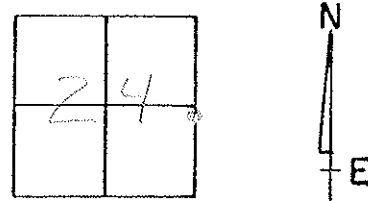
TYPE MONUMENT Mon. Boxes.

ON SURFACE - BELOW ALL

LEFT - & PAV'T. - RIGHT YES (ALL)

TO EDGE PAVEMENT

S.L.M. 534+70 / 537+67 / 536+27



ODOT. DISTRICT 2 SURVEY OFFICE

SHEET _____ OF _____

County WOOD S.R. 25

Date 3-31-75

Township PLAIN

Weather CLEAR

Section 24

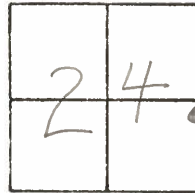
Temp. 35°

T5N, R10E

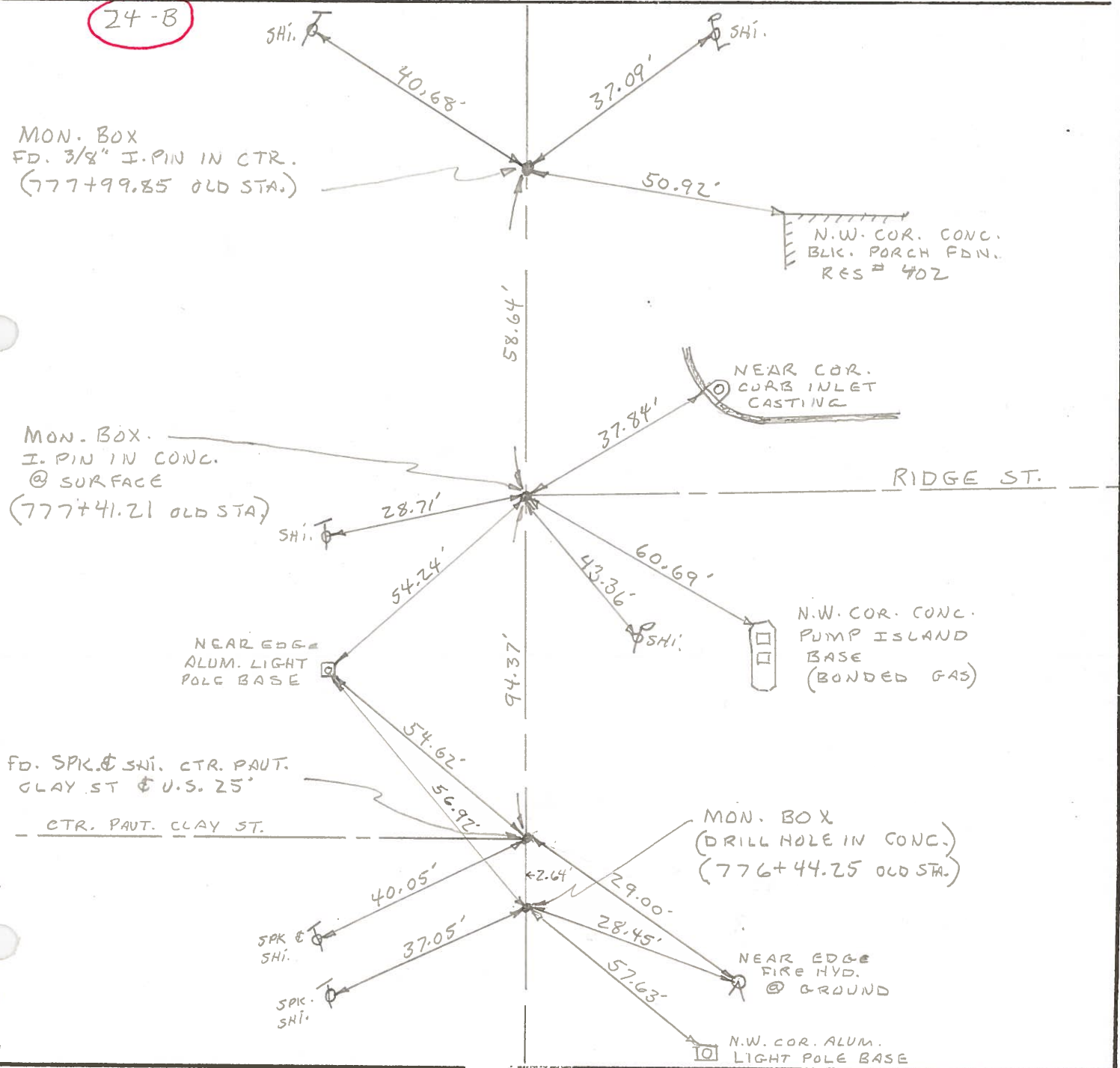
Personnel BURNSIDE

SMITH

BOWERS



24-B



PERSONNEL	TITLE	PERSONNEL	TITLE	COUNTY	DATE
				Wood	4/22/58
				S. R. 2.5	WEATHER
				SEC. B.G.	TEMP.

DESCRIPTION	LEFT	CENTER LINE	RIGHT	JOB NO.
# 864 782+69.58 E. Evers st.	P.K. mil. Shiner in Pole	47.81'	40.20' Fire Hyd. 36.47' Shiner in pole	
# 863 779+64.83 & Liberty st.	RR. spk.	51.75'	27.29' X-cut in curb	
# 862 779+57.50 Liberty st. mon. box.	24-C Fire Hyd.	50.95'	26.71' 33.40' 38.58' Fire Hyd.	
# 861 777+99.85 mon. box	24-B Shiner in Pole	40.65'	37.76' Shiner in pole	
# 860 777+41.21 Ridge St. mon. box	X-cut in curb	26.71'	37.53' Near Cor. C.B. E.N.E.	
# 859 776+44.25 Clay St. mon. box.	Near edge base 8" Alum. pole	54.22' 56.85'	28.40' Fire Hyd. 57.64' Near edge base 8" Alum. Pole	