

O.D.O.T. DISTRICT 2 SURVEY OFFICE (USE ONLY)

PERSONNEL \_\_\_\_\_

REFERENCE NO. 24 BA

SHEET 20 OF 35

NOTES BARNHISEL

DATE 6/14/01

ROUTE US 25

H.C. CANTERBURY

WEATHER SUNNY

COUNTY WOOD

R.C. MOSER

TEMP. 90°

TOWNSHIP PLAIN

SECTION 24

DWG BY RHOADES PID \_\_\_\_\_

T 5 N R 10 E

TYPE MONUMENT MONBOX W/IPIN

ON SURFACE - ~~BELOW~~ ON \_\_\_\_\_

OFFSET  $\odot$  PAVEMENT ON \_\_\_\_\_ LT : RT

- TO - EDGE PAVEMENT

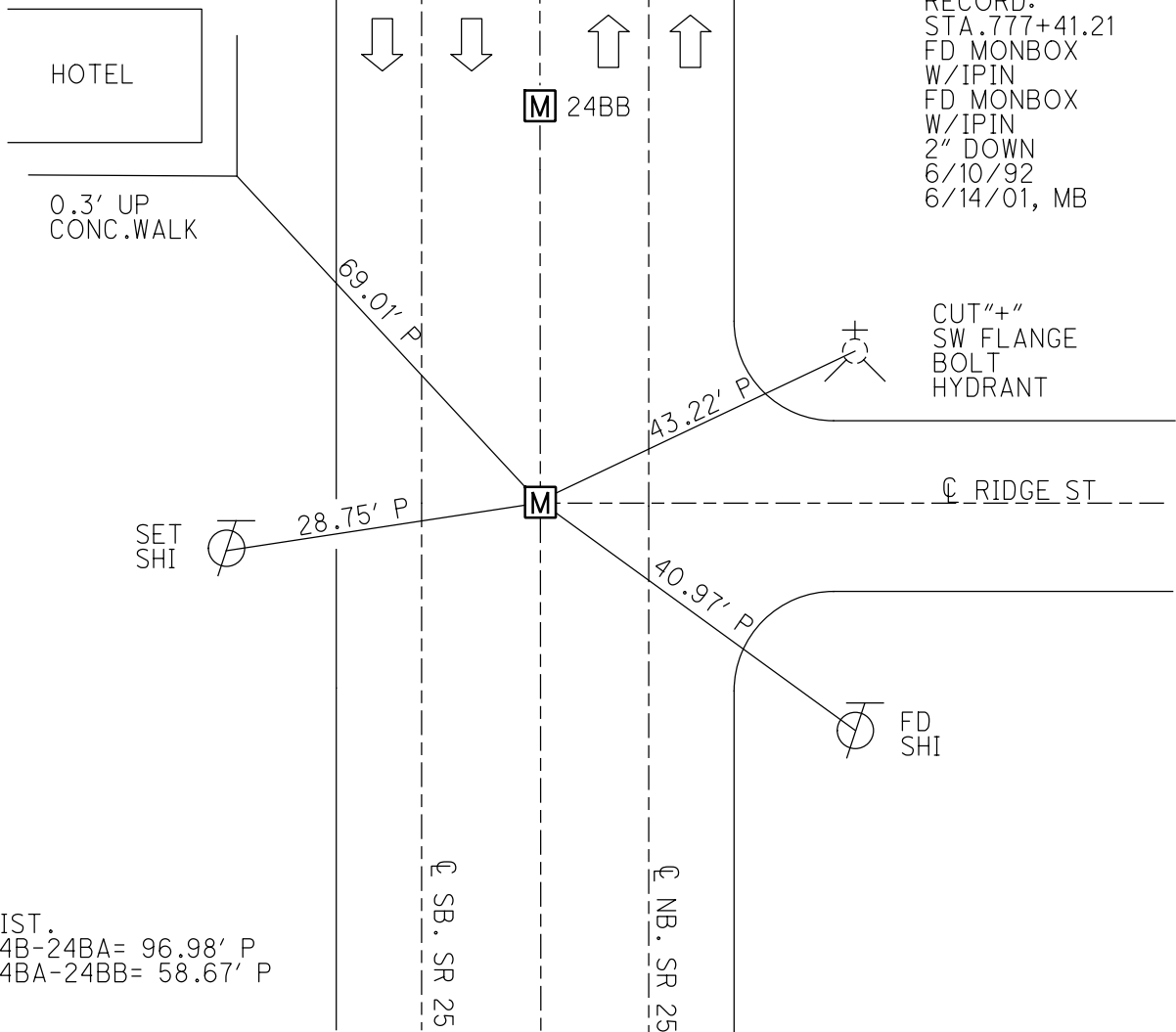
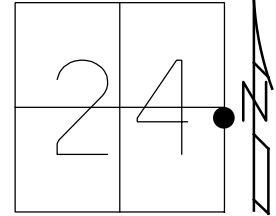
STATION: 535+66.98

HORZ.DATUM: \_\_\_\_\_

GEOID: \_\_\_\_\_

GRID: NORTHING: \_\_\_\_\_

EASTING: \_\_\_\_\_



RECORD:  
 STA. 777+41.21  
 FD MONBOX  
 W/IPIN  
 FD MONBOX  
 W/IPIN  
 2" DOWN  
 6/10/92  
 6/14/01, MB

CUT "+"  
 SW FLANGE  
 BOLT  
 HYDRANT

FD  
 SHI

DIST.  
 24B-24BA= 96.98' P  
 24BA-24BB= 58.67' P

# O.D.O.T. DISTRICT 2 SURVEY OFFICE

PERSONNEL

REFERENCE NO. 24-B

SHEET 13 OF 22

NOTES BARNHISEL ✓

6-14-01

H.C. VAN DUSEN MC

DATE 6-10-92

ROUTE U.S. 25

R.C. BARNHISEL Km

WEATHER SUNNY

COUNTY WOODS

TEMP. +65° 90

TOWNSHIP PLAIN

SECTION 24

T 5 N R 10 E

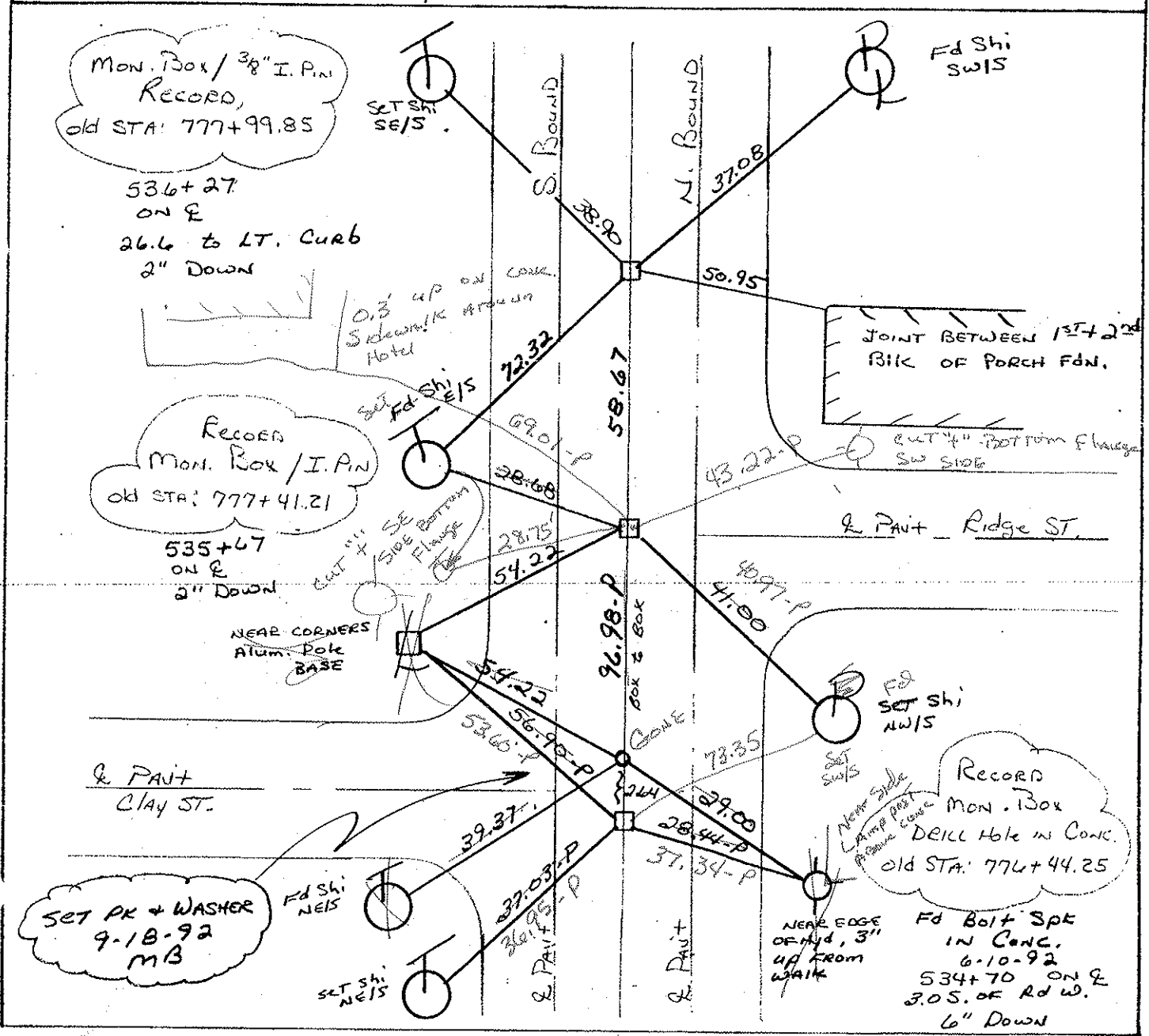
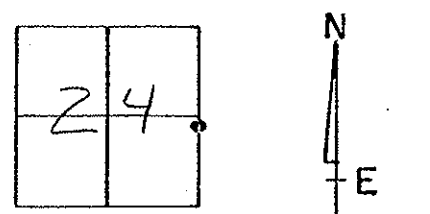
TYPE MONUMENT Mon. Boxes.

~~ON~~ SURFACE - BELOW ALL

~~LEFT~~ - & PAV'T. - ~~RIGHT~~ yes (ALL)

- TO - EDGE PAVEMENT

S.L.M. 534+70 / 537+67 / 536+27



Mon. Box / 3/8" I.P.M.  
RECORD,  
old STA: 777+99.85

536+27  
ON E  
26.6 to LT. Curb  
2" DOWN

RECORD  
Mon. Box / I.P.M.  
old STA: 777+41.21

535+67  
ON E  
2" DOWN

JOINT BETWEEN 1ST & 2ND  
BLK OF PORCH FDN.

CUT 4" BOTTOM FLANGE  
SW SIDE

E PAVT Ridge ST.

NEAR CORNERS  
ALUM. POLE  
BASE

FD  
SET SHI  
NW/S

RECORD  
Mon. Box  
DELL Hole in CONC.  
old STA: 776+44.25

FD Bolt Spk  
IN CONC.  
6-10-92  
534+70 ON E  
3.0 S. OF Rd W.  
6" DOWN

SET PK + WASHER  
9-18-92  
MB

NEAR EDGE  
OF Hyd, 3"  
UP FROM  
WALK

# O.D.O.T. DISTRICT 2 SURVEY OFFICE

PERSONNEL

REFERENCE NO. 24-B

SHEET 13 OF 22

NOTES BARNHISEL

H.C. VAN DUSEN

DATE 6-10-92

ROUTE U.S. 25

R.C. BARNHISEL

WEATHER SUNNY

COUNTY Wood

TEMP. +65°

TOWNSHIP Plain

SECTION 24

T 5 R 10 E

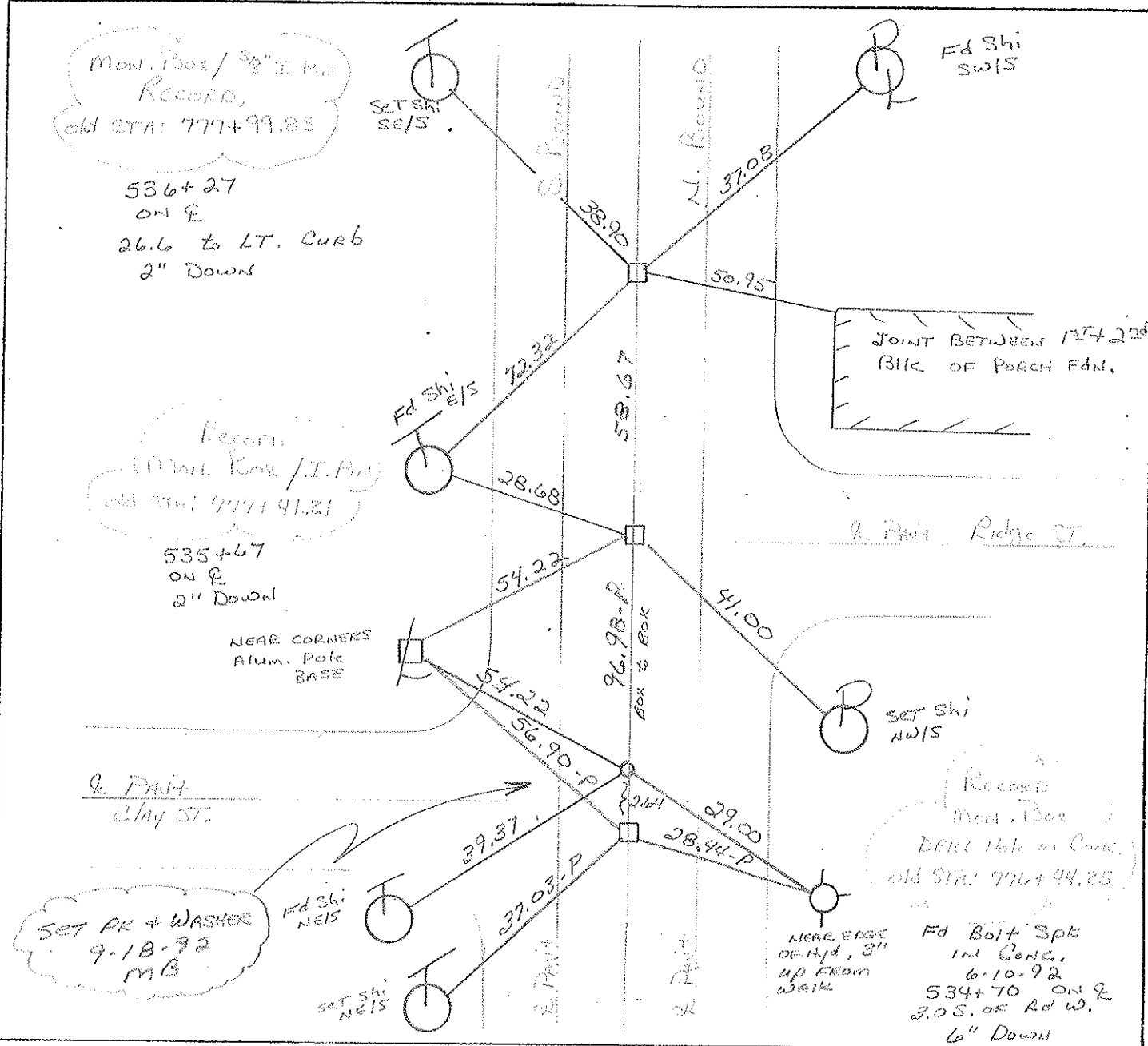
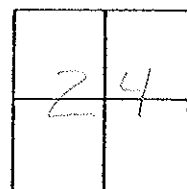
TYPE MONUMENT Mon. Boxes.

ON SURFACE - BELOW ALL

LEFT - & PAV'T. - RIGHT YES (ALL)

TO EDGE PAVEMENT

S.L.M. 534+70 / 537+67 / 536+27



ODOT. DISTRICT 2 SURVEY OFFICE

SHEET \_\_\_\_\_ OF \_\_\_\_\_

County WOOD U.S. 25  
S.R.

Date 3-31-75

Township PLAIN

Weather CLEAR

Section 24

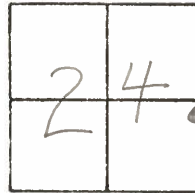
Temp. 35°

T5N, R10E

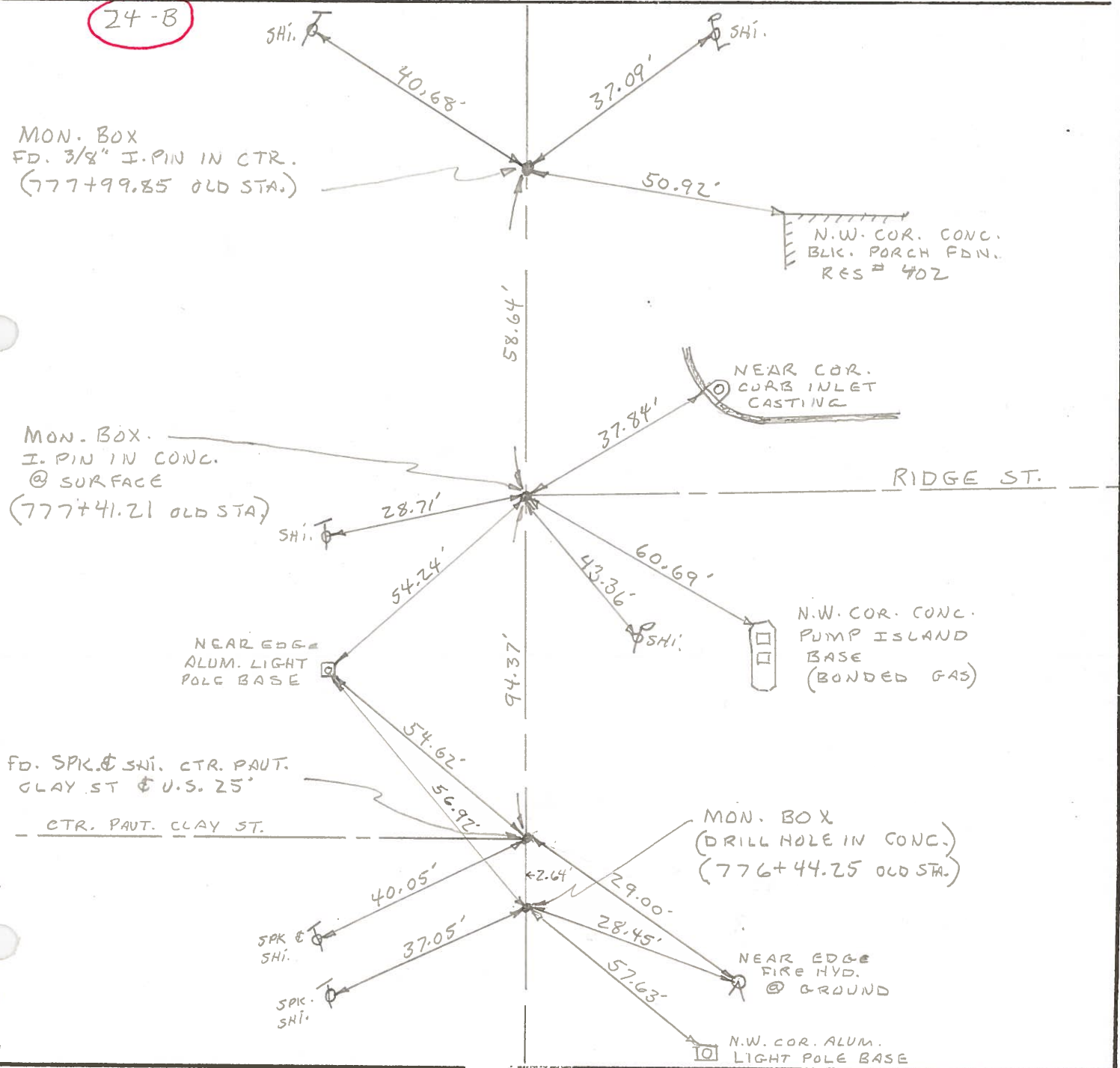
Personnel BURNSIDE

SMITH

BOWERS



24-B



PERSONNEL	TITLE	PERSONNEL	TITLE	COUNTY <u>Wood</u>	DATE <u>4/22/58</u>
				S. R. <u>2.5</u>	WEATHER
				SEC. <u>B.G.</u>	TEMP.

DESCRIPTION	LEFT	CENTER LINE	RIGHT	JOB NO.
# 864 782+69.58 E. Evers st.	P.K. mil. Shiner in Pole	47.81'	40.20' Fire Hyd. 36.47' Shiner in pole	
# 863 779+64.83 & Liberty st.	RR. spk.	51.75'	27.29' 'x'-cut in curb	
# 862 779+57.50 Liberty st. mon. box.	(24-C) Fire Hyd.	50.95'	26.71' 33.40' 38.58' Fire Hyd.	
# 861 777+99.85 mon. box	Shiner in Pole (24-B)	40.65'	37.76' Shiner in pole	
# 860 777+41.21 Ridge St. mon. box	'x'-cut in curb	26.71'	37.53' Near Cor. C.B. E.N.E.	
# 859 776+44.25 Clay St. mon. box.	Near edge base 8" Alum. pole	54.22' 56.85'	28.40' Fire Hyd. 57.64' Near edge base 8" Alum. Pole	