

O.D.O.T. DISTRICT 2 SURVEY OFFICE (USE ONLY)

PERSONNEL

REFERENCE NO. 24 EB

SHEET 29 OF 35

NOTES BARNHEISEL

DATE 6/11/92

ROUTE US 25

H.C. VAN DUSEN

WEATHER SUNNY

COUNTY WOOD

R.C. BARNHEISEL

TEMP. 60°

TOWNSHIP PLAIN

SECTION 24

DWG BY RHOADES PID _____

T 5 N R 10 E

TYPE MONUMENT P.K./WASHER

ON SURFACE - ~~BELOW~~ ON _____

OFFSET ☉ PAVEMENT ON _____ LT : RT

22.6' TO LT EDGE PAVEMENT

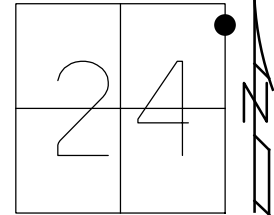
STATION: 554+90

HORIZ.DATUM: _____

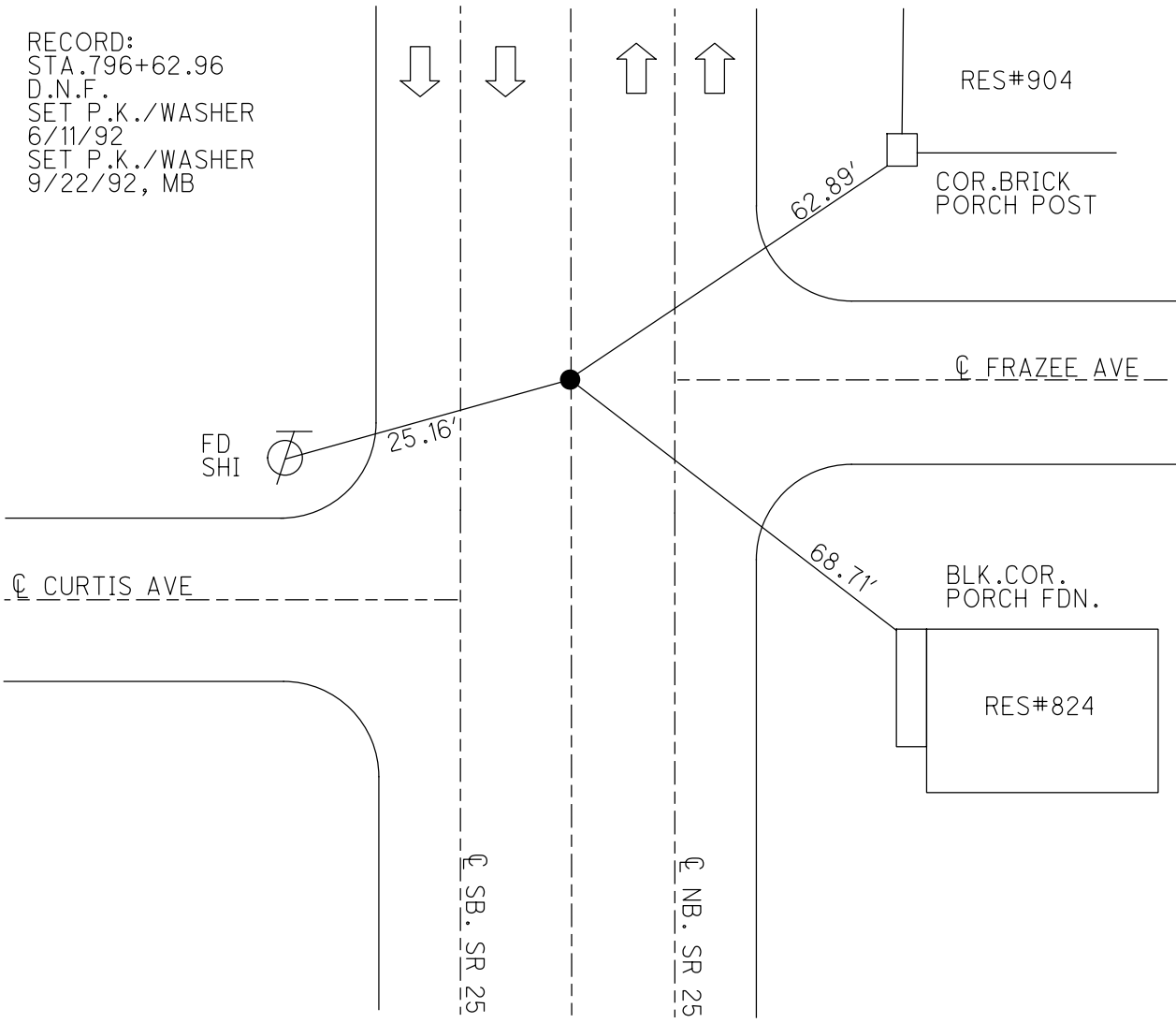
GEOID: _____

GRID: NORTHING: _____

EASTING: _____



RECORD:
 STA. 796+62.96
 D.N.F.
 SET P.K./WASHER
 6/11/92
 SET P.K./WASHER
 9/22/92, MB



O.D.O.T. DISTRICT 2 SURVEY OFFICE

PERSONNEL

REFERENCE NO. 24-5-1

SHEET 18 OF 22

NOTES Rodhissel

H.C. VAN DUSSAN

DATE 6-11-92

ROUTE US 25

R.C. KUSZ

WEATHER SUNNY

COUNTY WOOD

TEMP. +65°

TOWNSHIP Plain

SECTION 24

T 5 N R 10 E

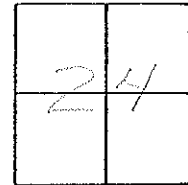
TYPE MONUMENT PT. DESTROYED Reset PK + WASHER

ON SURFACE - BELOW YES

~~LEFT~~ - ~~E~~ PAV'T. - RIGHT YES

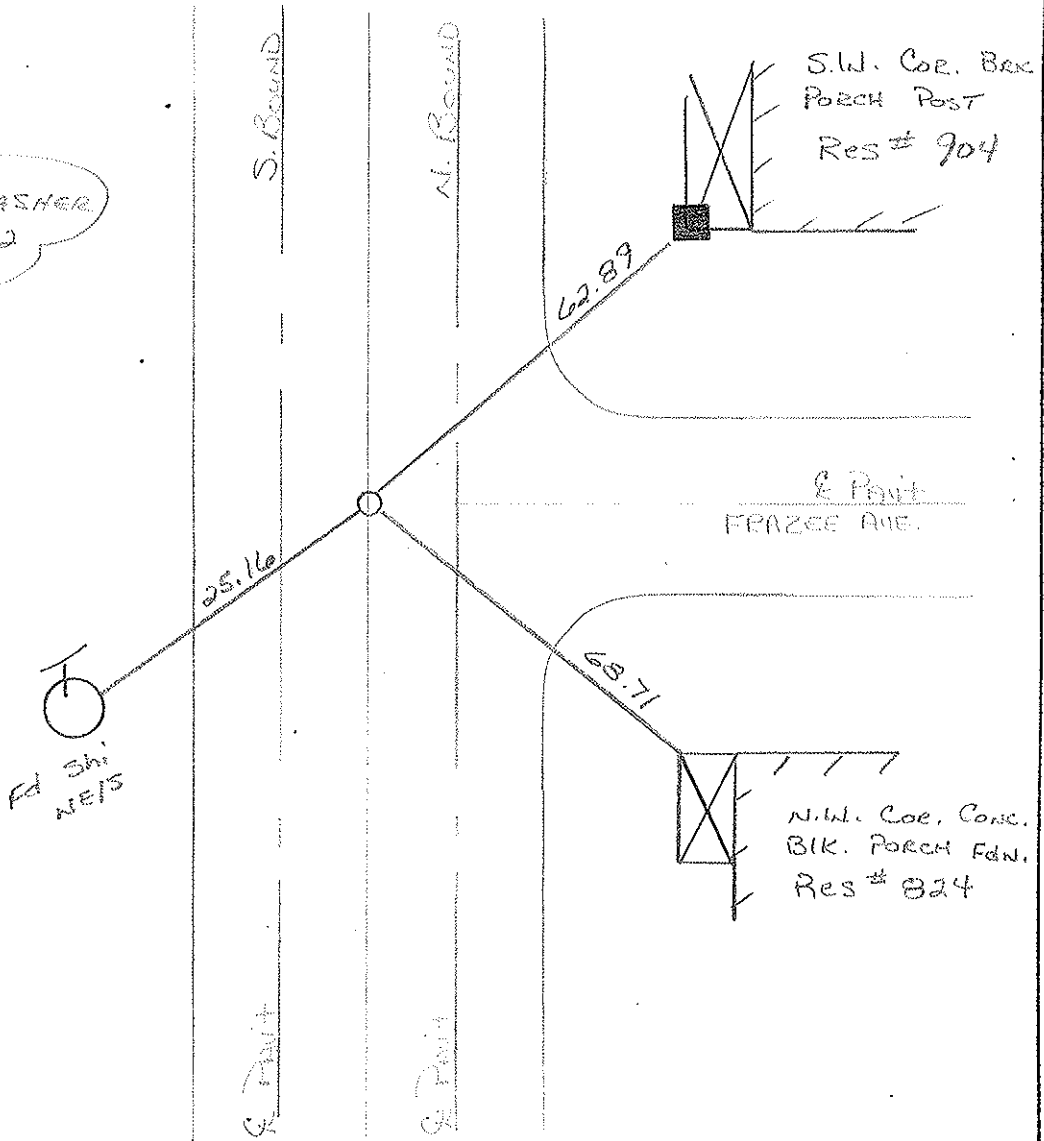
22.6 TO LT EDGE PAVEMENT

S.L.M. 554+90



Record:
STATION 174+62.96
OLD STA:

SET PK + WASHER
9-22-92
MB



ODOT. DISTRICT 2 SURVEY OFFICE

SHEET _____ OF _____

County WOOD ^{U.S.} S.R. 25

Date 4-14-75

Township PLAIN

Weather CLOUDY

Section 24

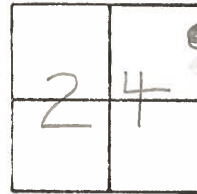
Temp. 42°

T5N, R10E

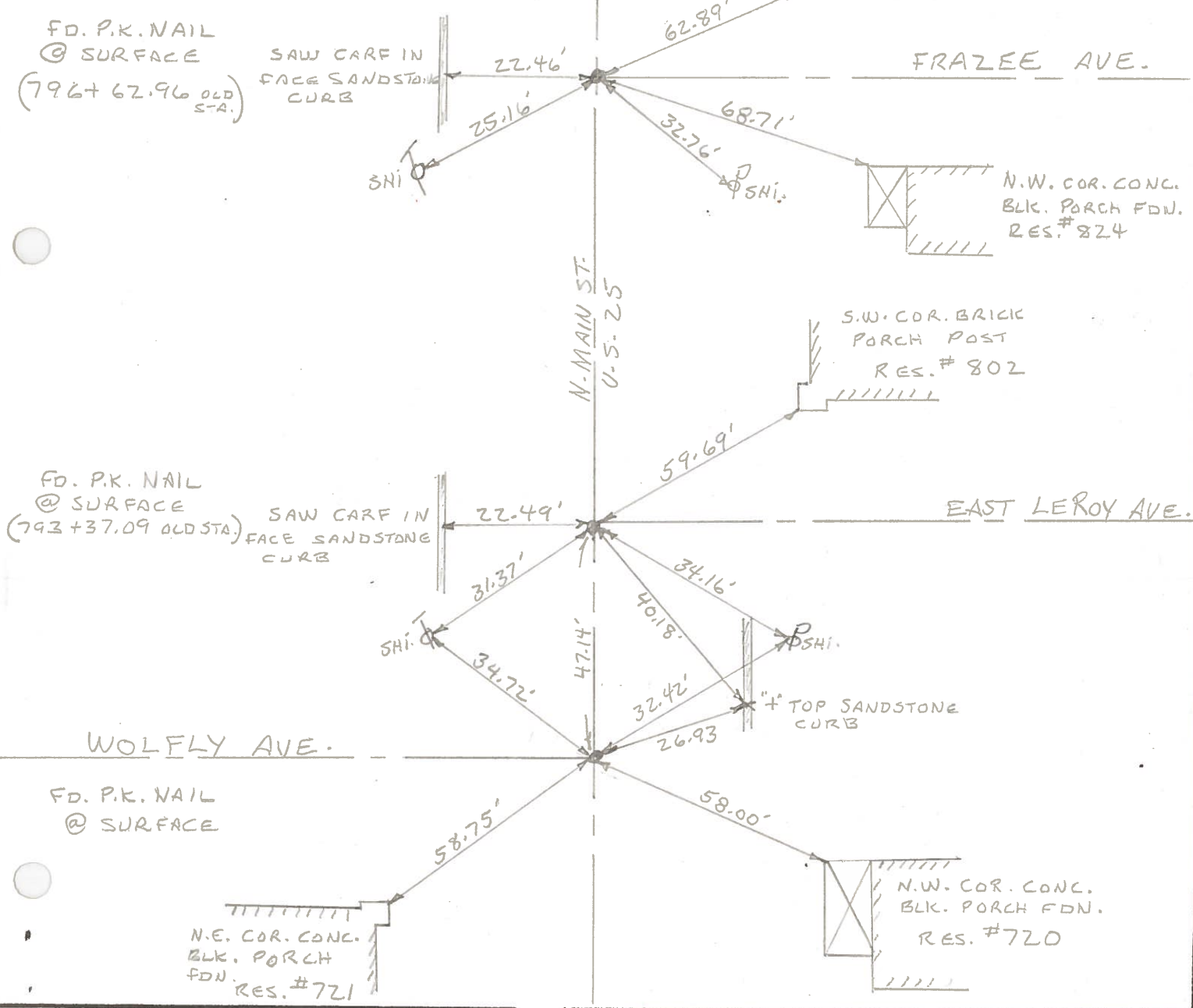
Personnel BURNSIDE

SMITH

BOWER



24-E



PERSONNEL TITLE PERSONNEL TITLE

COUNTY Wood

DATE 4/22/58

S. R. 25

WEATHER

SEC. BG.

TEMP.

DESCRIPTION

LEFT

CENTER LINE

RIGHT

JOB NO.

72

817+80.10
W. Corp. line

Shiner Note: see sheet # 8E

71

816+73.10
E. Corp. line

P.L. Note: see sheet # 8E

70

804+79.1 End of conc. pavmt.

69

804+50.22 Pce Rd. W. man box

Note: see sheet # 8D

#868

803+70.40
Pce Rd. E. man box

Note: see sheet # 8D

#867

796+62.96
Frazee Ave.
fd. + cut in pavmt.

saw cut top
edge face curb

22.47'

24.91'

36.81'

Shi. in pole

24-E-1

Shi. in pole

#866

793+37.09
Leroy Ave.
fd + cut in pavmt.

Saw cut in
curb @ face

22.48'

31.28'

28.37'

Shi. in pole

24-E

Shi. in pole

12" cut in curb Radi.

#865

790+11.22
Reed Ave. fd. x-in pavmt.

25.57'

29.30'

41.15'

Shi. in pole

24-D-1

Shi. in pole