

O.D.O.T. DISTRICT 2 SURVEY OFFICE (USE ONLY)

PERSONNEL

REFERENCE NO. 26

SHEET 32 OF 35

NOTES BARNHEISEL

DATE 6/11/92

ROUTE US 25

H.C. VAN DUSEN

WEATHER SUNNY

COUNTY WOOD

R.C. KUSZ
BURNETT

TEMP. 65°

TOWNSHIP PLAIN

SECTION 13

DWG BY RHOADES

PID _____

T 5 N R 10 E

TYPE MONUMENT COPPERWELD MARKER

~~ON SURFACE~~ - BELOW 2"

OFFSET ϕ PAVEMENT 7.2' ~~LT~~ : RT

15.2' TO RT EDGE PAVEMENT

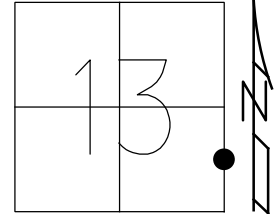
STATION: 575+00

HORZ. DATUM: _____

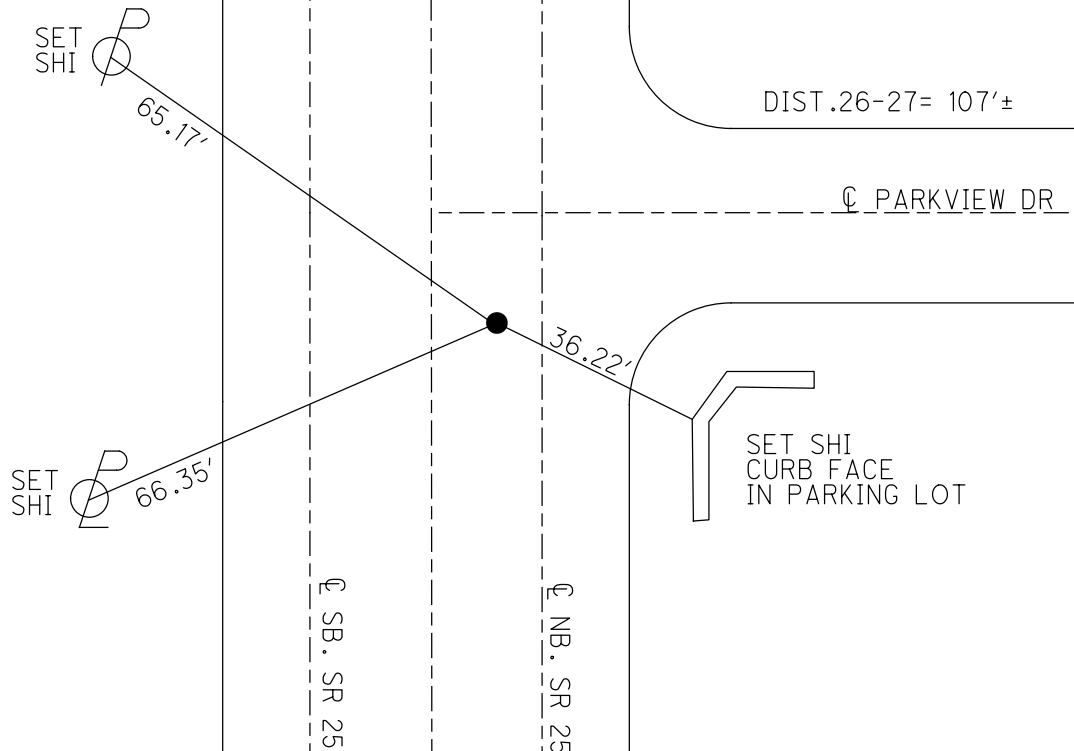
GEOID: _____

GRID: NORTHING: _____

EASTING: _____



RECORD:
OLD B.G.
CORP. LINE EAST
FD COPPERWELD MARKER
2" DOWN
6/11/92
SET P.K./WASHER
9/24/92, MB



O.D.O.T. DISTRICT 2 SURVEY OFFICE

PERSONNEL

REFERENCE NO. 26407

SHEET 20 OF 22

NOTES BARNHILL

H.C. VAN DUSEN

DATE 6-11-92

ROUTE U.S. 25

R.C. KUSZ

WEATHER Sunny

COUNTY Wood

BURNETT

TEMP. +65°

TOWNSHIP Plain

SECTION 13

T 5 N R 10 E

TYPE MONUMENT Copperweld MARKER

"B" WAS DESTROYED FROM CONST.

ON SURFACE - BELOW 2"

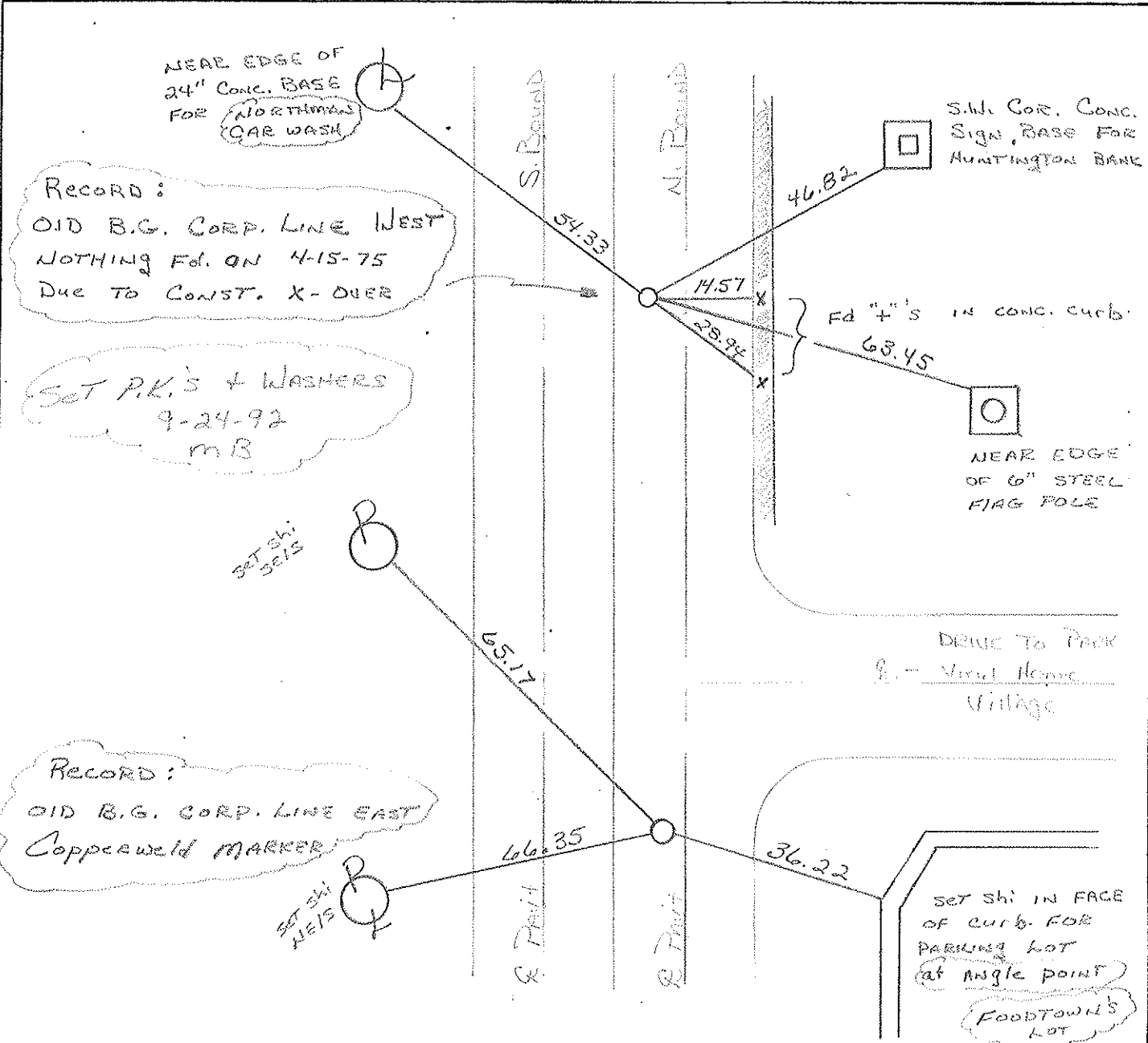
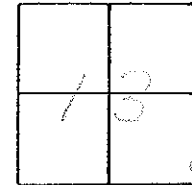
"A" F- & PAV'T. - RIGHT 7.2

"B" 7.2

"A" 15.2 TO RT EDGE PAVEMENT

"B" 14.4 TO RT Edge

S.L.M. 575+00 + 576+07



ODOT. DISTRICT 2 SURVEY OFFICE

SHEET _____ OF _____

County WOOD ^{O.S.} ~~S.R.~~ 25

Date 4-15-75

Township PLAIN

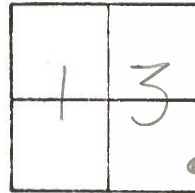
Weather CLOUDY

Section 13

Temp. 45°

T5N, R12E

Personnel BURNSIDE



SMITH

BOWERS

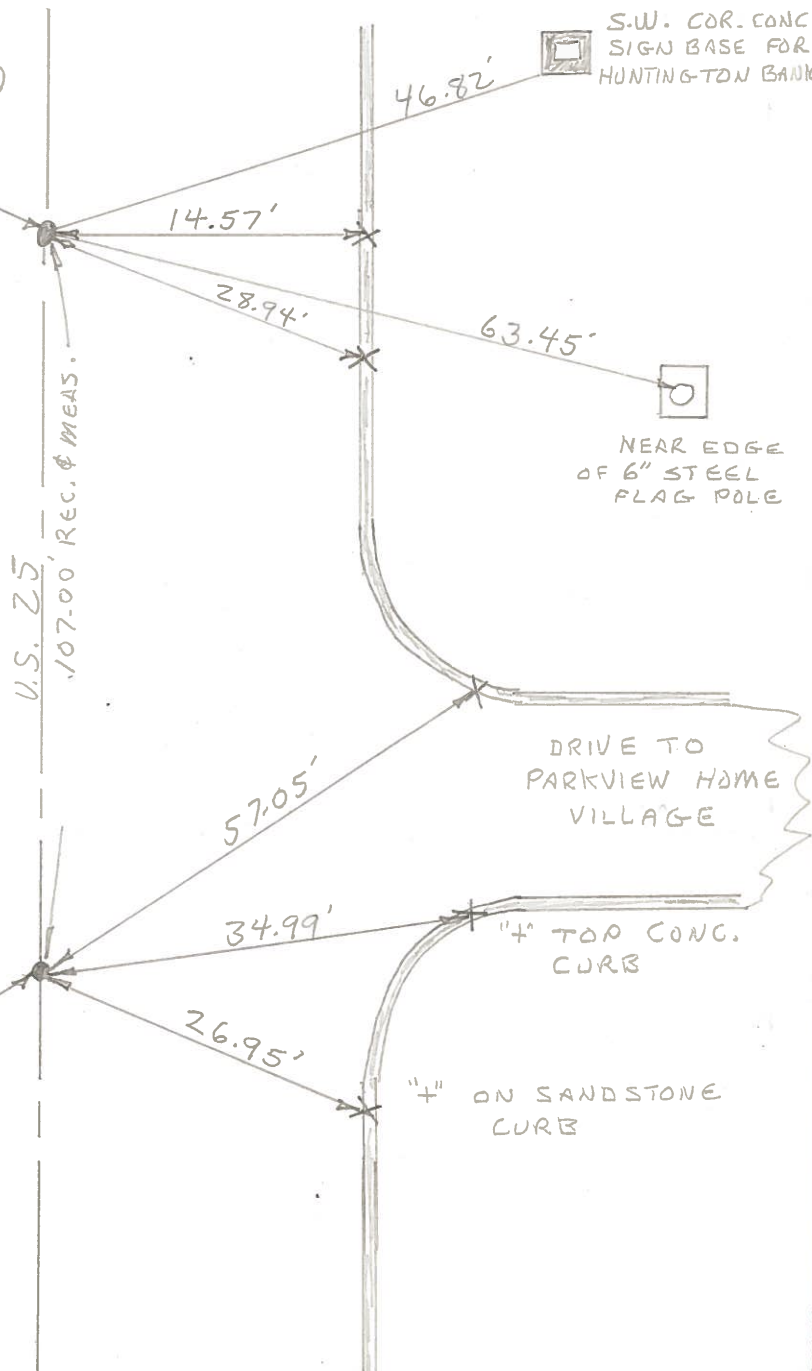
MEAD

#26 - #27

NEAR EDGE 24" CONG. BASE FOR ϕ (SOLO CAR WASH)

S.W. COR. CONG. SIGN BASE FOR HUNTINGTON BANK

OLD B.G. CORP LINE WEST
NOTHING FD. DUE TO X-OVER
OLD TIES GOOD



NEAR EDGE OF 6" STEEL FLAG POLE

DRIVE TO PARKVIEW HOME VILLAGE

OLD B.G. CORP LINE EAST
COPPERWELD MARKER @ SURFACE ϕ 7'± EAST OF CTR. PAVT.

"+" TOP CONG. CURB

"+" ON SANDSTONE CURB

8" STEEL SIGN CASING, FLUSH WITH CONG. BASE (NO SIGN)

PERSONNEL	TITLE	PERSONNEL	TITLE
Silvester			
#			
crew			

COUNTY Wood DATE 5-22-58
 S. R. #25 WEATHER _____
 SEC. B.G. TEMP. _____

DESCRIPTION LEFT CENTER LINE RIGHT JOB NO.

