

O.D.O.T. DISTRICT 2 SURVEY OFFICE (USE ONLY)

PERSONNEL

REFERENCE NO. 27

SHEET 33 OF 35

NOTES BARNHESEL

DATE 6/11/92

ROUTE US 25

H.C. VAN DUSEN

WEATHER SUNNY

COUNTY WOOD

R.C. KUSZ

TEMP. 65°

TOWNSHIP PLAIN

BURNETT

SECTION 13

DWG BY RHOADES PID \_\_\_\_\_

T 5 N R 10 E

TYPE MONUMENT BRASS MON.

~~ON SURFACE~~ - BELOW ON

OFFSET  $\bar{C}$  PAVEMENT 7.2' ~~±~~ : RT

14.4' TO RT EDGE PAVEMENT

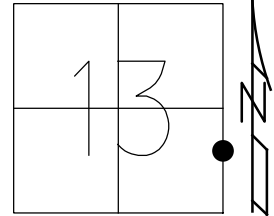
STATION: 576+07

HORZ. DATUM: \_\_\_\_\_

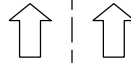
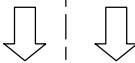
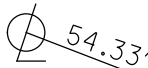
GEOID: \_\_\_\_\_

GRID: NORTHING: \_\_\_\_\_

EASTING: \_\_\_\_\_



NEAR EDGE  
24" CONC.  
SIGN BASE  
NORTHMAN  
CAR WASH



46.82'



COR. CONC.  
SIGN BASE  
HUNTINGTON  
BANK

+14.57'

FD "+"s  
CURB

63.45'

+28.94'



NEAR EDGE  
6" STEEL  
FLAG POLE

DIST. 26-27 = 107'±

RECORD:  
OLD B.G.  
CORP. LINE WEST  
FD BRASS MON.  
9/63, SILVESTER  
D.N.F.  
4/15/75, BURNSIDE  
6/11/92  
SET P.K./WASHER  
9/24/92, MB

27 ●

$\bar{C}$  SB. SR 25

$\bar{C}$  NB. SR 25

$\bar{C}$  PARKVIEW DR

# O.D.O.T. DISTRICT 2 SURVEY OFFICE

PERSONNEL

REFERENCE NO. 26407

SHEET 20 OF 22

NOTES BARNHILL

H.C. VAN DUSEN

DATE 6-11-92

ROUTE U.S. 25

R.C. KUSZ

WEATHER Sunny

COUNTY Wood

BURNETT

TEMP. +65°

TOWNSHIP Plain

SECTION 13

T.5 N R.10 E

TYPE MONUMENT Copperweld MARKER

"B" WAS DESTROYED FROM CONST.

ON SURFACE - BELOW 2"

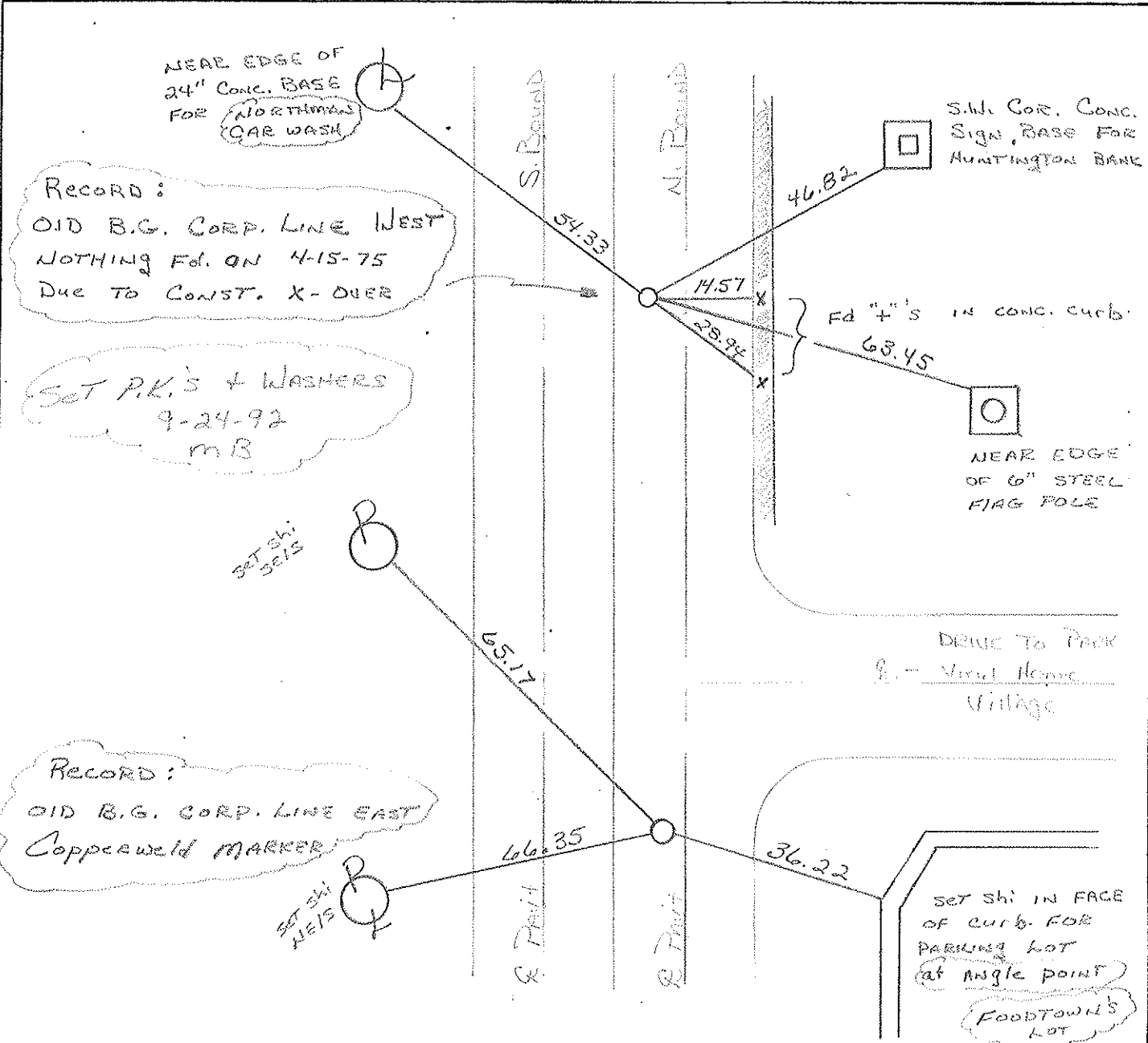
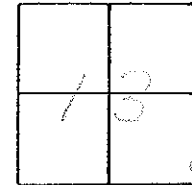
"A" F- & PAV'T. - RIGHT 7.2

"B" 7.2

"A" 15.2 TO RT EDGE PAVEMENT

"B" 14.4 TO RT Edge

S.L.M. 575+00 + 576+07



ODOT. DISTRICT 2 SURVEY OFFICE

SHEET \_\_\_\_\_ OF \_\_\_\_\_

County WOOD <sup>O.S.</sup> ~~S.R.~~ 25

Date 4-15-75

Township PLAIN

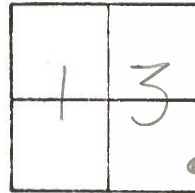
Weather CLOUDY

Section 13

Temp. 45°

T5N, R12E

Personnel BURNSIDE



SMITH

BOWERS

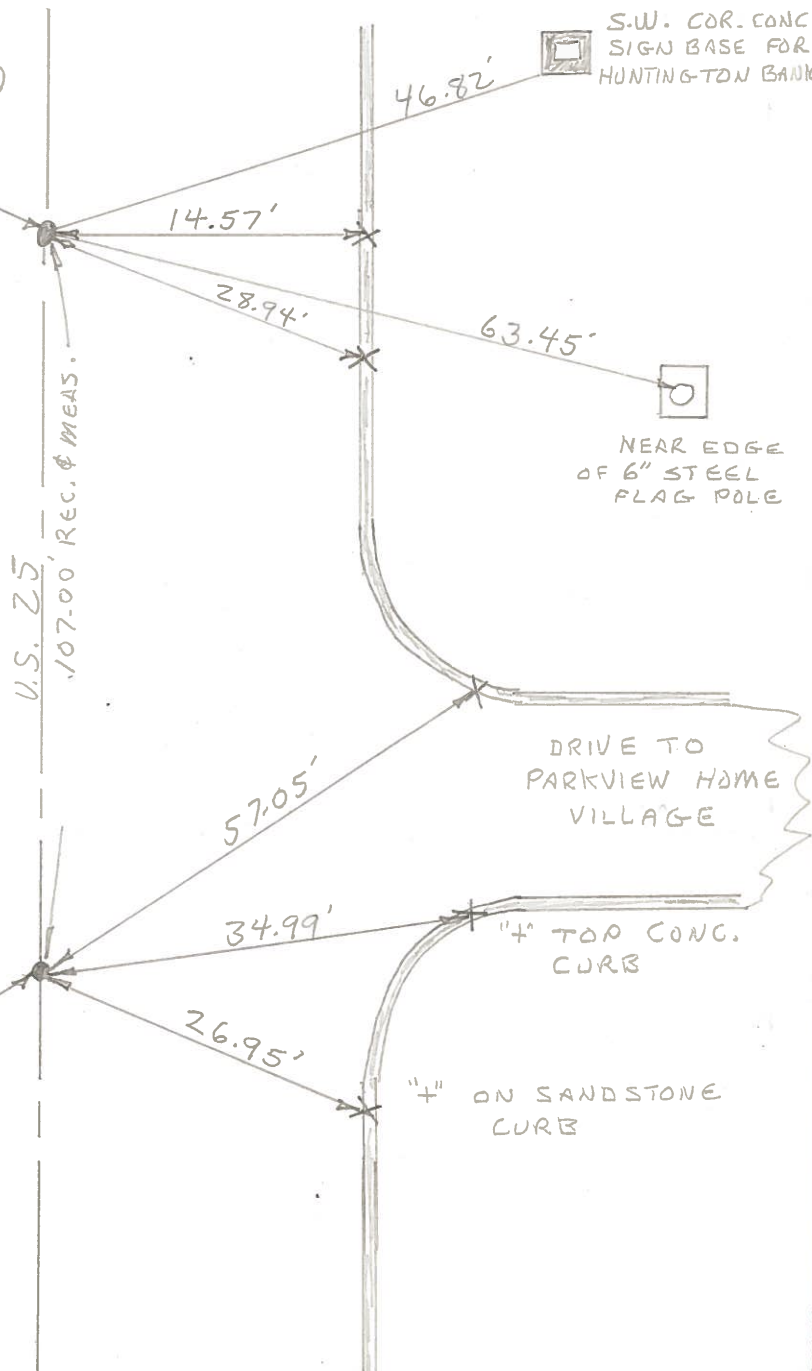
MEAD

#26 - #27

NEAR EDGE 24" CONG. BASE FOR  $\phi$  (SOLO CAR WASH)

S.W. COR. CONG. SIGN BASE FOR HUNTINGTON BANK

OLD B.G. CORP LINE WEST  
NOTHING FD. DUE TO X-OVER  
OLD TIES GOOD



NEAR EDGE OF 6" STEEL FLAG POLE

DRIVE TO PARKVIEW HOME VILLAGE

OLD B.G. CORP LINE EAST  
COPPERWELD MARKER @ SURFACE  $\phi$  7'± EAST OF CTR. PAVT.

8" STEEL SIGN CASING, FLUSH WITH CONG. BASE (NO SIGN)

"4" TOP CONG. CURB

"4" ON SANDSTONE CURB

PERSONNEL	TITLE	PERSONNEL	TITLE
Silvester			
#			
crew			

COUNTY Wood DATE 5-22-58  
 S. R. # 25 WEATHER \_\_\_\_\_  
 SEC. B.G. TEMP. \_\_\_\_\_

DESCRIPTION LEFT CENTER LINE RIGHT JOB NO.

