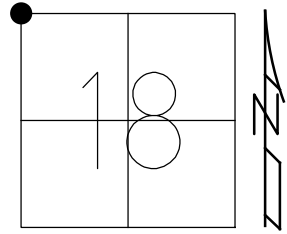


O.D.O.T. DISTRICT 2 SURVEY OFFICE (USE ONLY)

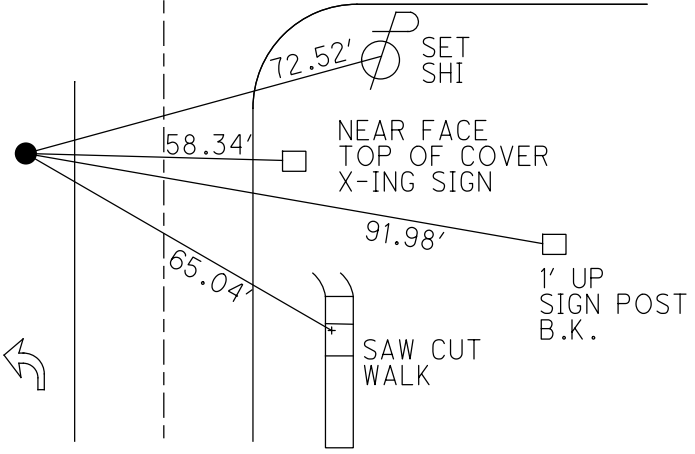
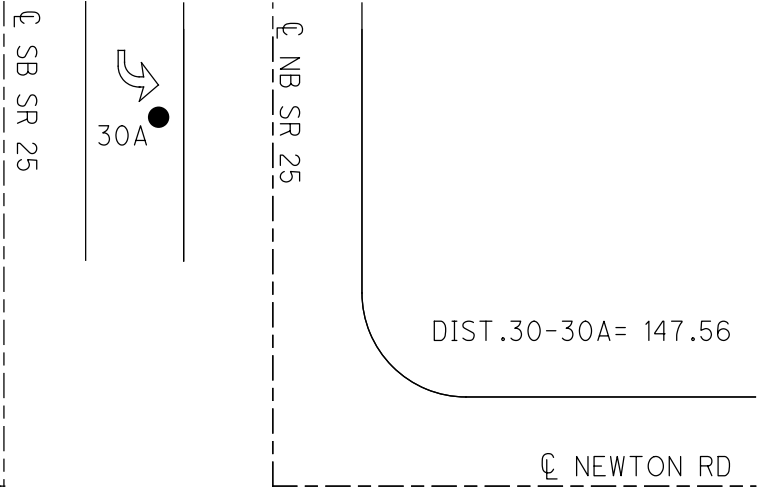
PERSONNEL _____ REFERENCE NO. 30 SHEET 1 OF 19
 NOTES AUBLE DATE 10/27/23 ROUTE SR 25
 H.C. NIESE WEATHER BREEZY COUNTY WOOD
 R.C. AUBLE TEMP. 73° TOWNSHIP PLAIN
 RHOADES SECTION 18
 DWG BY RHOADES PID NO PID T 5 N R 10 E

TYPE MONUMENT MAG/WASHER
 ON SURFACE - ~~BELOW~~ ON
 OFFSET ☉ PAVEMENT ON LT : RT
19' TO RT EDGE PAVEMENT 17.7' S ☉ NEWTON RD
 STATION: 626+02.43

HORZ. DATUM: NAD83 2011 GEOID: NAVD88 2012A
 GRID: NORTHING: 633580.891 EASTING: 1652837.779



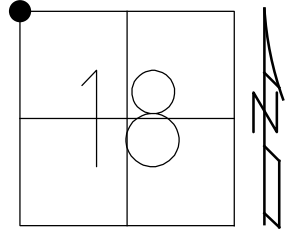
RECORD:
 STA. 614+72
 COR. STONE 33' N.
 OF N.W. COR. SEC. 18
 FD BRASS MON
 9-4-85, HOFFMAN
 SET P.K./WASHER
 9-30-94
 FD MAG NAIL
 SV6035
 4-30-09, DCH
 FD MAG NAIL
 REF30
 12/22/20, JFO
 5/23/22, TDN
 SET MAG/WASHER
 10/27/23, TDN



O.D.O.T. DISTRICT 2 SURVEY OFFICE (USE ONLY)

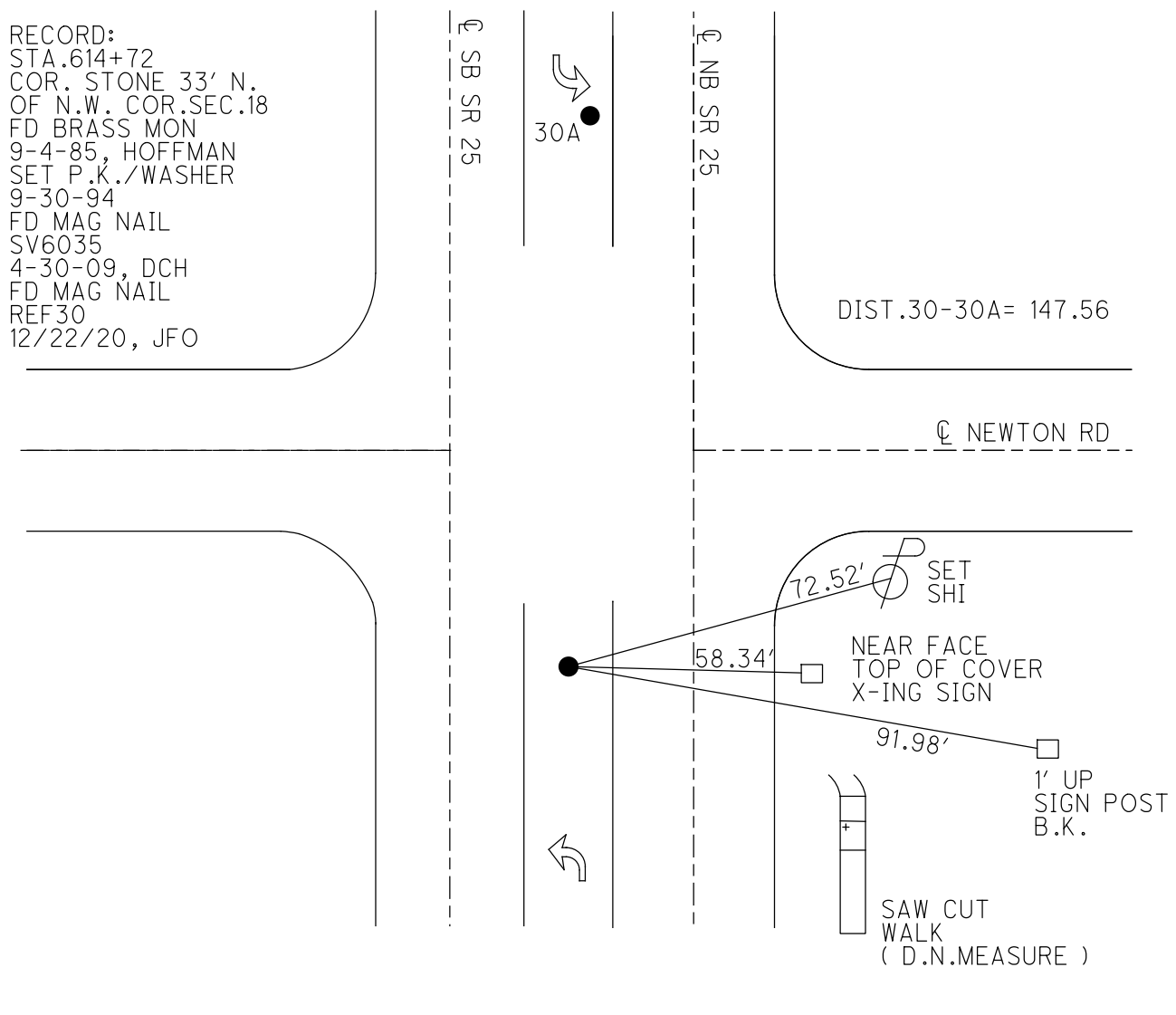
PERSONNEL _____ REFERENCE NO. 30 SHEET 1 OF 19
 NOTES AUBLE DATE 5/23/22 ROUTE SR 25
 H.C. NIESE WEATHER BREEZY COUNTY WOOD
 R.C. WHITAKER TEMP. 58° TOWNSHIP PLAIN
 DWG BY RHOADES PID 85201 SECTION 18
 T 5 N R 10 E

TYPE MONUMENT MAG NAIL
 ON SURFACE - ~~BELOW~~ ON
 OFFSET ☐ PAVEMENT ON LT : RT
19' TO RT EDGE PAVEMENT 17.7' S ☐ NEWTON RD
 STATION: 626+02.43



HORIZ.DATUM: NAD83 2011 GEOID: NAVD88 2012A
 GRID: NORTHING: 633580.891 EASTING: 1652837.779

RECORD:
 STA.614+72
 COR. STONE 33' N.
 OF N.W. COR.SEC.18
 FD BRASS MON
 9-4-85, HOFFMAN
 SET P.K./WASHER
 9-30-94
 FD MAG NAIL
 SV6035
 4-30-09, DCH
 FD MAG NAIL
 REF30
 12/22/20, JFO



O.D.O.T. DISTRICT 2 SURVEY OFFICE

PERSONNEL

REFERENCE NO. 30

SHEET 1 OF 18

NOTES HOMAN

DATE 5-1-09

ROUTE US 25

H.C. ROUSOS

WEATHER CLEAR

COUNTY WOOD

R.C. HOMAN

TEMP. 65°

TOWNSHIP PLAIN

SECTION 18

T 5 S R 10 E

TYPE MONUMENT SM.R.R.SPIKE, DNF

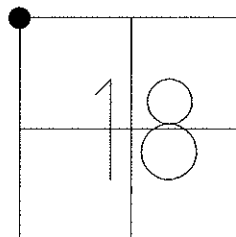
ON SURFACE - ~~BELOW~~ YES

LEFT - Q PAV'T - ~~RIGHT~~ 4.2' N.B.L., 19' TO RT EDGE
11.0' TO LT EDGE PAVEMENT

S.L.M. 614+47.42, 17.7' S. OF Q NEWTON RD.

GPS Northing: 633582.0119

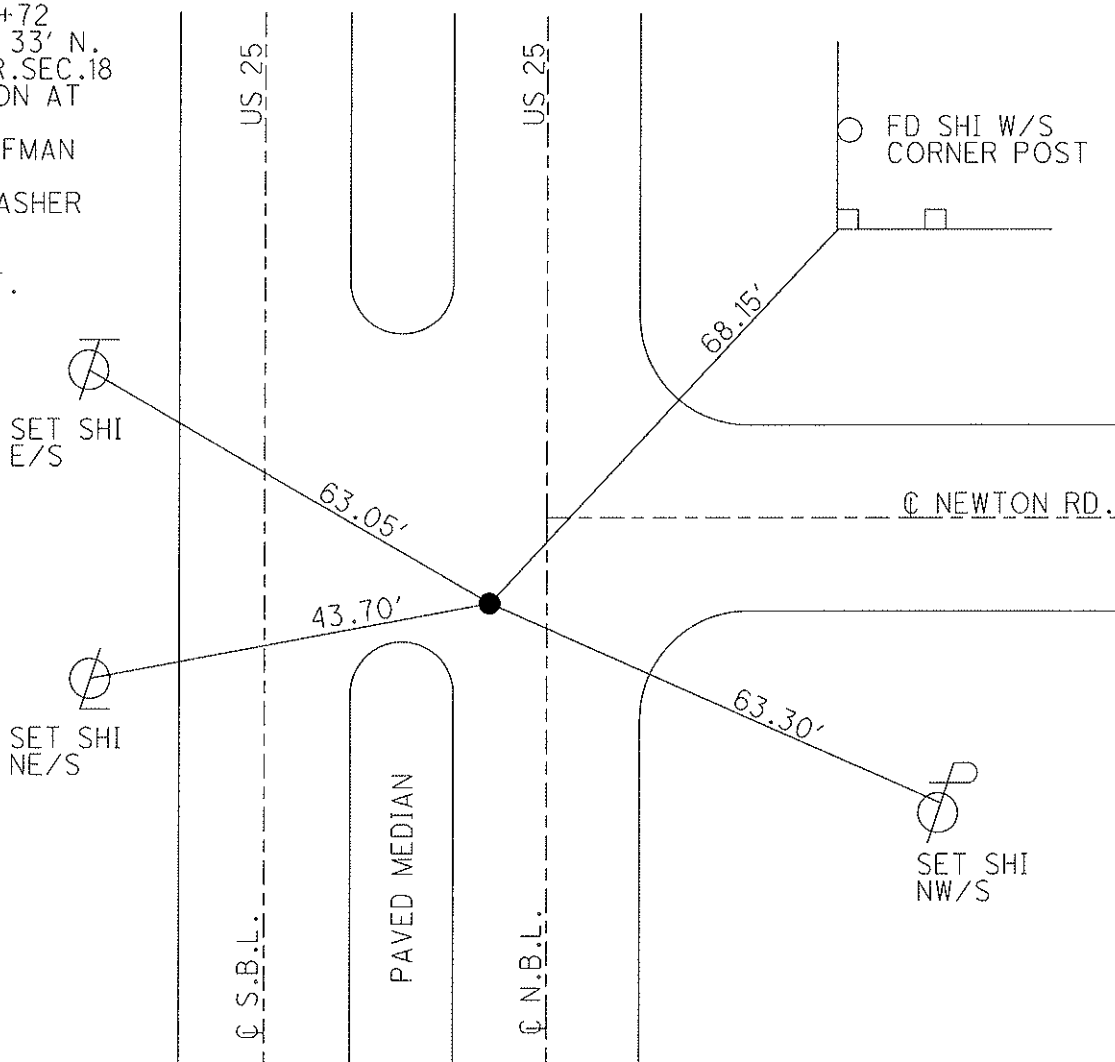
Easting: 1652838.2546



RECORD: 614+72
 COR. STONE 33' N.
 OF N.W. COR. SEC. 18
 FD BRASS MON AT
 SURFACE.
 9-4-85, HOFFMAN

RESET PK/WASHER
 9-30-94

DNF.CALC PT.
 5/1/09, DH



(NOTE: DRAWING IS FROM ORIGINAL, 8/1/94 JMH)

O.D.O.T. DISTRICT 2 SURVEY OFFICE

PERSONNEL

REFERENCE NO. 30

SHEET 1 OF 12

NOTES BARNHISEL

H.C. CORDES

DATE 8-1-94

ROUTE U.S. 25

R.C. HERMILLER

WEATHER Clear

COUNTY WOOD

SLOVAK A

TEMP. +75°F

TOWNSHIP PLAIN

VAN DUSEN

SECTION 18

T 5 N R 10 E

TYPE MONUMENT Sm RR Spk

ON SURFACE - ~~BELOW~~ YES

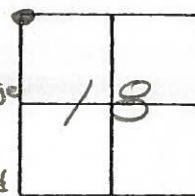
LEFT- & PAV'T. - ~~RIGHT~~ 4.2 N.B.L.

11.0 TO LT EDGE PAVEMENT

S.L.M. 614+72

17.7 S. OF E NEWTON Rd

19.0 TO RT Edge



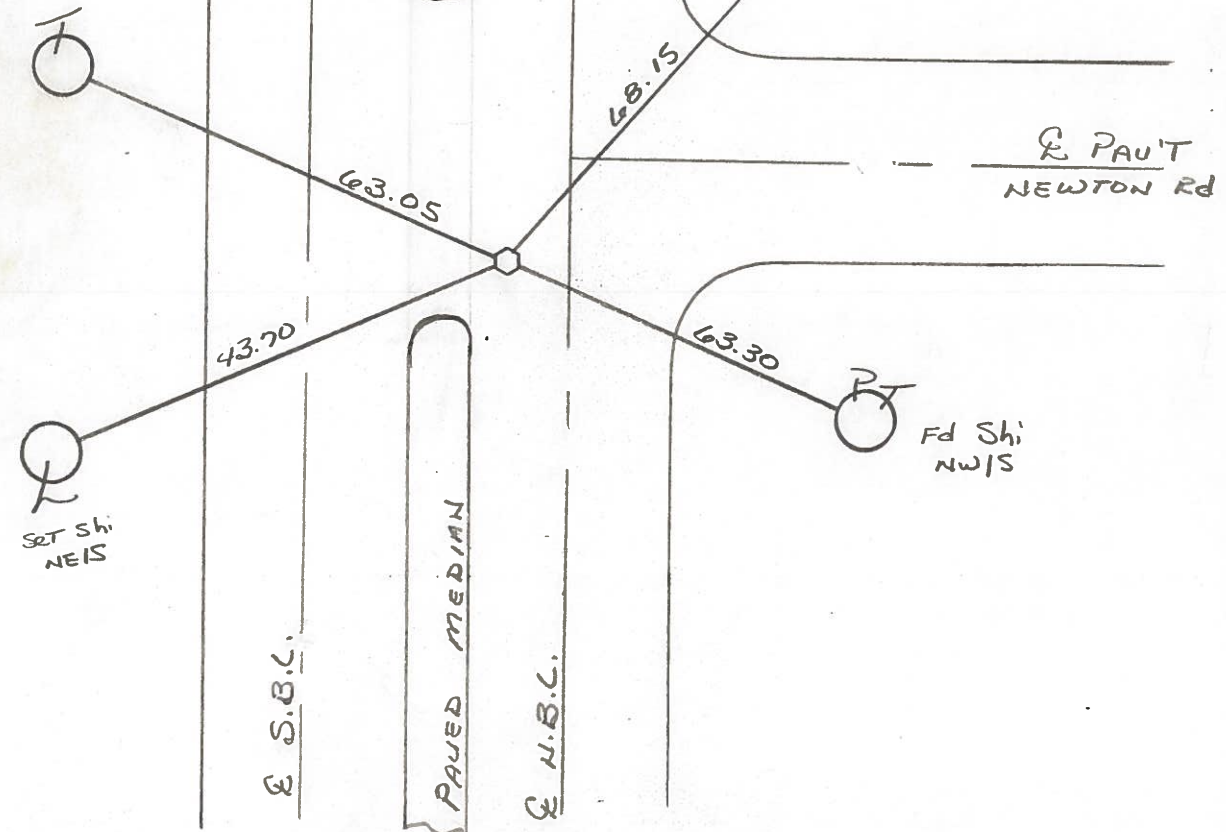
RECORD: COR. STONE
33' N. OF N.W.
COR. SEC. 18

Fd BRASS MON. AT
SURFACE
9-4-85
HOFFMAN

RESET PK/WASHER
9-30-94
MIB

Fd Shi
W/S CORNER POST

SET Shi
E/S



Resurfaced 1994

Q.D.O.T. DISTRICT 2 SURVEY OFFICE

SHEET _____ OF _____

County Wood S.R. 25

Date 9-4-85

Township PLAIN

Weather CLEAR

Section 18

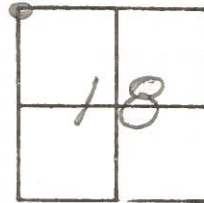
Temp. 80°

T5N, R10E

Personnel Hoffman

BARNHISEL H.C.

Flournoy R.C.



#30

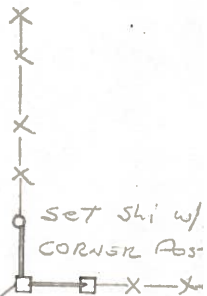
Fd Brass mon @ surface
4.5' Lt of & Pavt NBL
9.3' to & median
16.5' south of & Pavt NEWTON Rd

SLM 615 +11
Set SMALL R.R. SPK
10-11-85 SWH

Records:

COR. STONE 33' N. of N.W.
COR. SEC 18

Set shi
SE/S



& PAVT
NEWTON

65.62
TWIN CHINESE FLM
Set shi E/S

90.36
Set shi NE/S

Set shi NE/S

54.34

67.97

63.25

Set shi
W/S

& S.B.L.

& N.B.L.

O.D.O.T. DISTRICT 2 SURVEY OFFICE

SHEET _____ OF _____

County WOOD ^{U.S.} ~~S.R.~~ 25

Date 7-7-71

Township CENTER

Weather CLEAR

Section 18

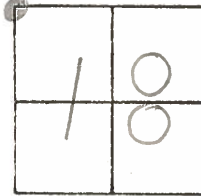
Temp. 88°

T5N, R10E

Personnel BURNSIDE

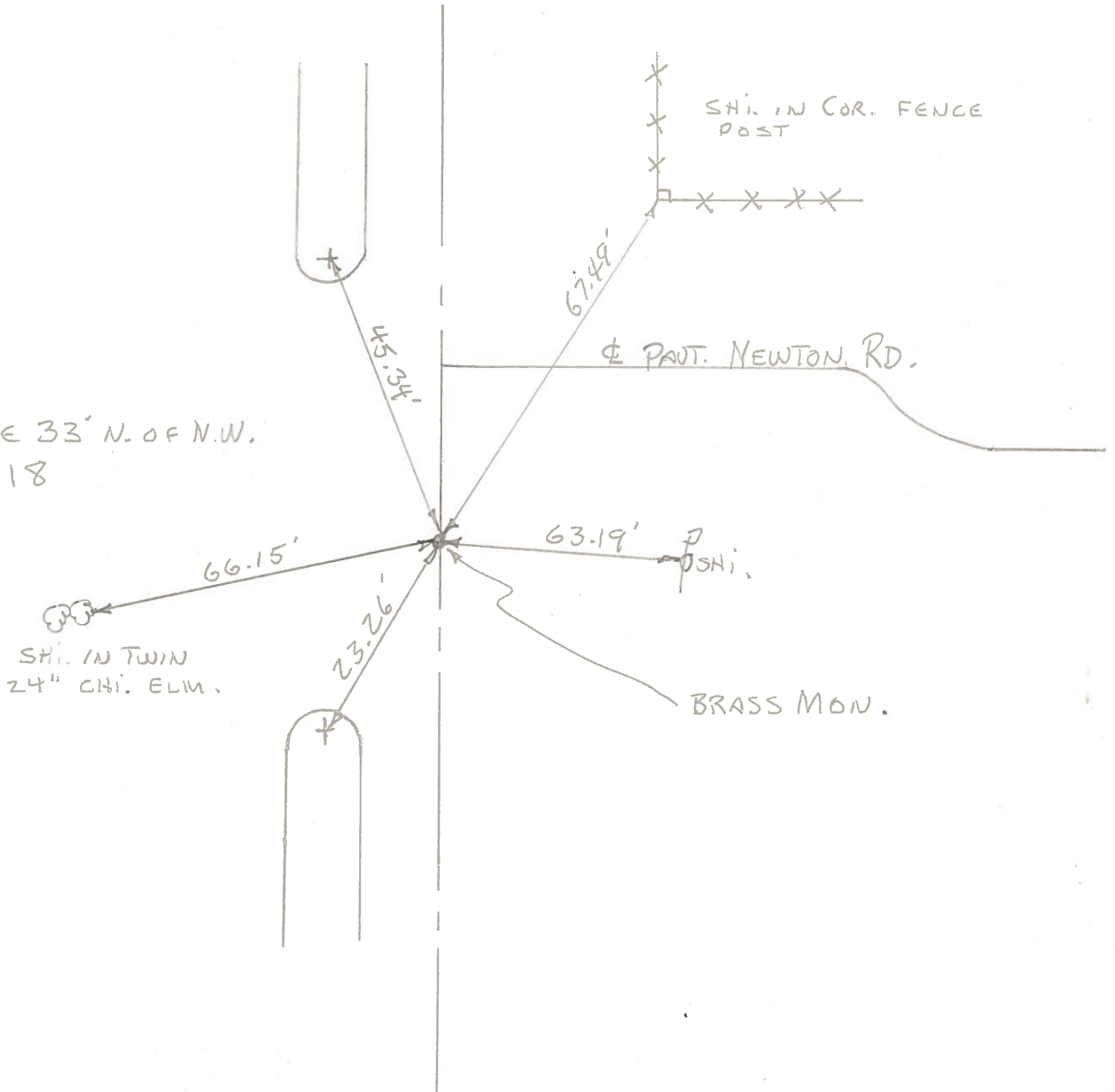
SMITH

BOWERS



#30

COR. STONE 33' N. OF N.W.
COR. SEC. 18



PERSONNEL TITLE PERSONNEL TITLE

COUNTY Wood

DATE 3-23-60

S. R. U.S. #25

WEATHER 9-63

SEC.

TEMP.

DESCRIPTION

(Moborg Mon. (Raised & Greased))

JOB NO.

T-35/63

LEFT

CENTER LINE

RIGHT

29

LEFT	CENTER LINE	RIGHT	JOB NO.
Sta. 40+69.51 About 80 Rods N. of E 1/4 past sec. 13 Plain twp. E.R. spike Van Camp Rd. West. Bowling Greens W. Corp. line #254	3-23-60 Raised Brass Mon.	"X" Conc. med. strip S.W. Shiner in T.P. N.W. 98.30' 98.6. Shiner in P.P. W. 81.81' 81.24 Shiner in T.P. S.W. 77.86' 78.00 Shiner in T. Pole S.E. 84.87 "X" Conc. med. strip N.W. 21.29 Shi. in Pav't West 10.86	45.09
Sta. 52+73.27 Cor. stone 33' N. of N.W. cor. sec. 18 Center twp. Brass Mon #255	Newton Rd.	"X" Conc. Med. strip N.W. 45.4 Shiner in 34' Walnut S.E. 53.0 Shiner in 20" Apple N.E. 81.1 Shiner in T.P. 63.2 Shiner in 8' twin Elm W. 66.90 Shiner cor. Post N.E. 67.40 Shiner P. Pole S.E. 52.90 "X" Conc. Med. strip S.W. 23.29 Shi. in Pav't west 11.86	
Sta. 82+90.35 E.R. Spike & R/W Co. Ed. W. No Angle Set new mon. #256	Bishop Rd.	Shiner in P.P. N.W. 80.2 Shiner in T.P. W.S.W. 60.00 Shiner in Ed. sign S.W. 85.4 Shiner in P. Pole N.E. 55.3 "X" Conc. Med. strip N.W. 46.08 "X" Conc. Med. strip S.W. 25.9	
Sta. 92+14.00 & Ed. E. E.R. Spike BRASS Mon. #257	Nims Rd. E.	"X" Conc. Med. strip N.W. 41.8 N.W. cor. Gas. Sta. S.E. 62.32 62.7 N.pt. W. pump island 57.7 Shiner in P.P. N.E. 38.0 Shiner T. Pole N.E. 66.0 Shiner P. Pole S.E. 52.0 "X" Conc. Med. strip S.W. 42.0	
Sta. 106+92.75 S.E. cor. sec. 1 Plain Twp. Set new mon. #258		Shiner in P.P. S.E. 35.4 Shiner in T.P. S.W. 74.2 Shiner in cor. post W. 59.10 "X" Conc. Med. strip N.W. 20.5 "X" Conc. - - W. 7.9	

30

31

32

33