

O.D.O.T. DISTRICT 2 SURVEY OFFICE (USE ONLY)

PERSONNEL

REFERENCE NO. 31 A

SHEET 4 OF 19

NOTES AUBLE
 H.C. NIESE
 R.C. WHITAKER

DATE 5/24/22
 WEATHER CLEAR
 TEMP. 55°

ROUTE SR 25
 COUNTY WOOD
 TOWNSHIP PLAIN
 SECTION 12
 T 5 N R 10 E

DWG BY RHOADES PID 110037

TYPE MONUMENT P.K.NAIL

~~ON SURFACE~~ - BELOW 1"

OFFSET \varnothing PAVEMENT - LT : RT

- TO - EDGE PAVEMENT

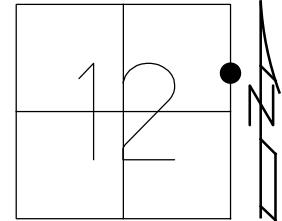
STATION: 656+54.08

HORZ.DATUM: NAD83 2011

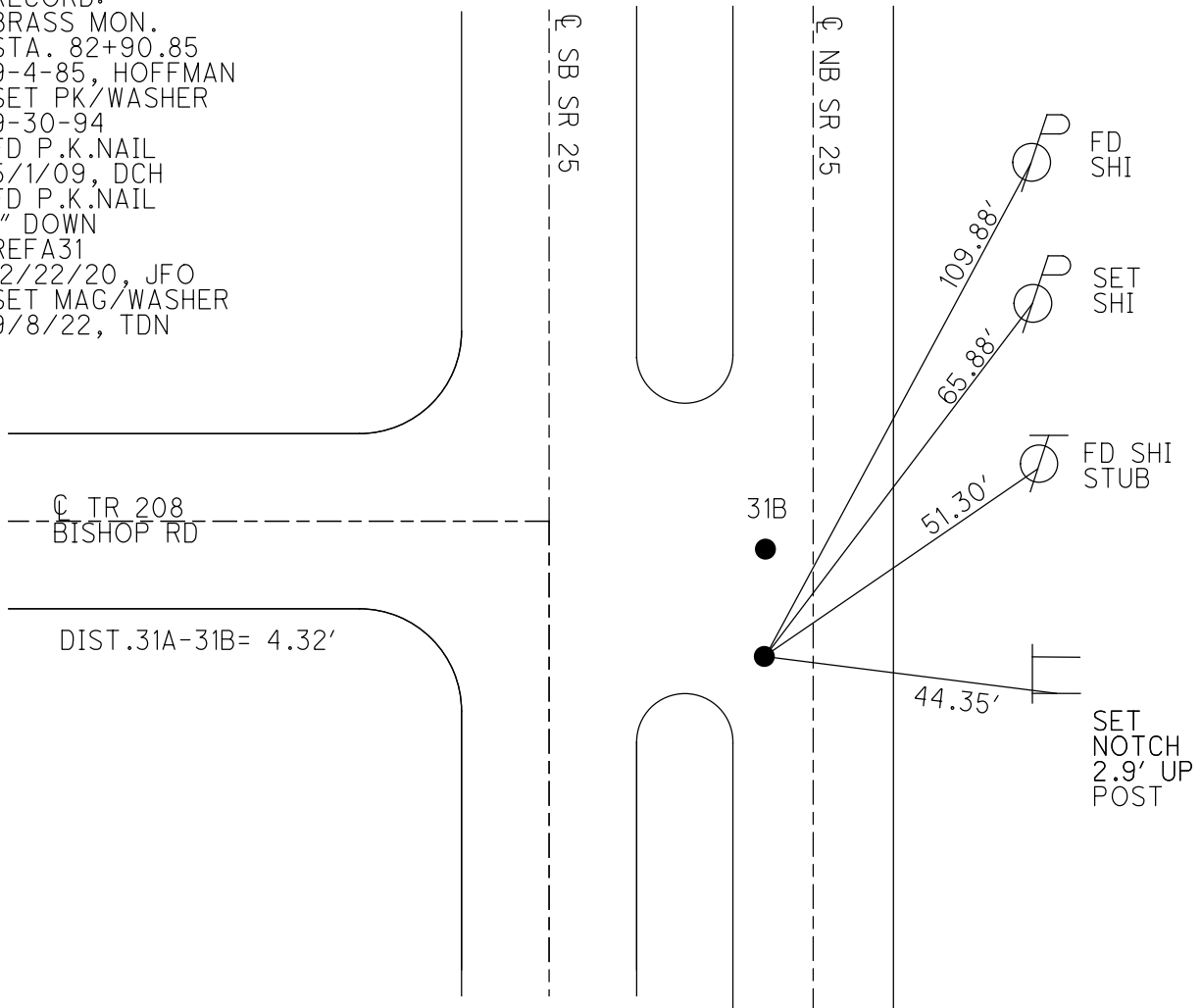
GEOID: NAVD88 2018

GRID: NORTHING: 636632.494

EASTING: 1652856.606



RECORD:
 BRASS MON.
 STA. 82+90.85
 9-4-85, HOFFMAN
 SET PK/WASHER
 9-30-94
 FD P.K.NAIL
 5/1/09, DCH
 FD P.K.NAIL
 1" DOWN
 REFA31
 12/22/20, JFO
 SET MAG/WASHER
 9/8/22, TDN



O.D.O.T. DISTRICT 2 SURVEY OFFICE

PERSONNEL

REFERENCE NO. 31

SHEET 2 OF 18

NOTES HOMAN

DATE 5-1-09

ROUTE US 25

H.C. ROUSOS

WEATHER CLEAR

COUNTY WOOD

R.C. HOMAN

TEMP. 65°

TOWNSHIP PLAIN

SECTION 12

T 5 S R 10 E

TYPE MONUMENT PK NAIL

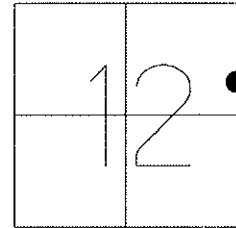
ON SURFACE - ~~BELOW~~ YES

LEFT - Q PAV'T - ~~RIGHT~~ 1.0' N.B.L.

10.8' TO LT EDGE PAVEMENT

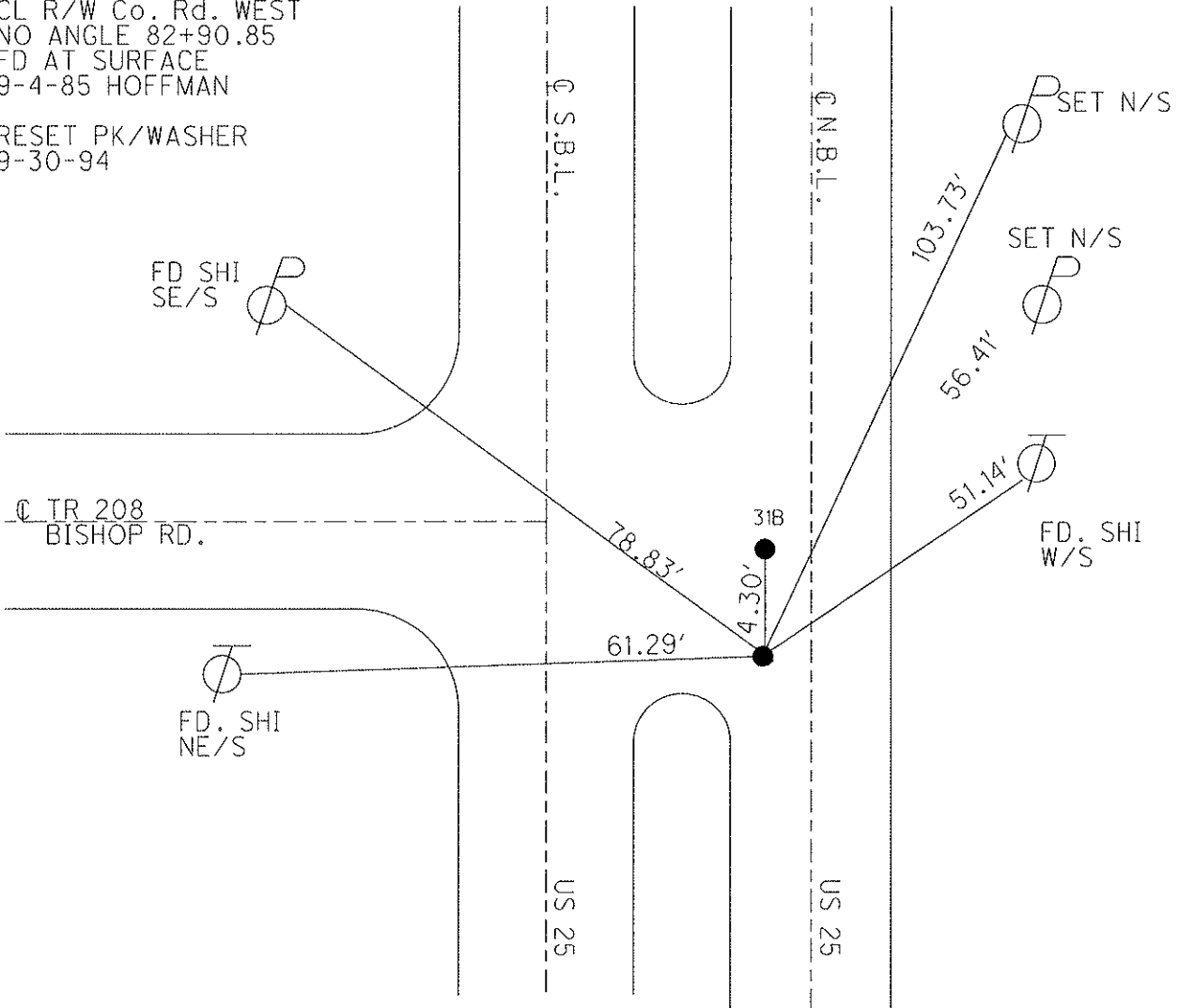
S.L.M. 644+98, 12.5' S. OF Q BISHOP RD., 13.3' RT E.P.

GPS Northing: 636632.5314 Easting: 1652856.5954



RECORD: BRASS MON.
CL R/W Co. Rd. WEST
NO ANGLE 82+90.85
FD AT SURFACE
9-4-85 HOFFMAN

RESET PK/WASHER
9-30-94



O.D.O.T. DISTRICT 2 SURVEY OFFICE

PERSONNEL

REFERENCE NO. 31

SHEET 2 OF 12

NOTES BARNHISEL

H.C. CORDES

DATE 8-1-94

ROUTE U.S. 25

R.C. HERMILLER

WEATHER CLEAR

COUNTY WOOD

VAN DUSEN M

TEMP. +25° F

TOWNSHIP PLAIN

SLOVAK P

SECTION 12

T 5 N R 10 E

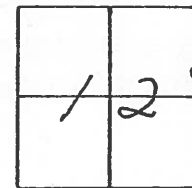
TYPE MONUMENT 5m RR Spk

ON SURFACE - ~~BELOW~~ yes

LEFT- \angle PAV'T. - ~~RISER~~ 1.0 N.B.L.

10.8 TO LT EDGE PAVEMENT 12.5 S. of E Bishop Rd

S.L.M. 644+98 13.3 RT E.P.



RECORD: BRASS MON.
E R/W Co. Rd. WEST

NO ANGLE
82+90.85

Fd AT SURFACE
9-4-85
HOFFMAN

Reset Pk/Washer
9-30-94
MB

P Fd Shi
SEIS

P Fd Shi
SWIS

STUB
Fd Shi
WIS

E PAVT
BISHOP Rd.

SET Shi
NEIS

78.55

55.31

51.19

61.12

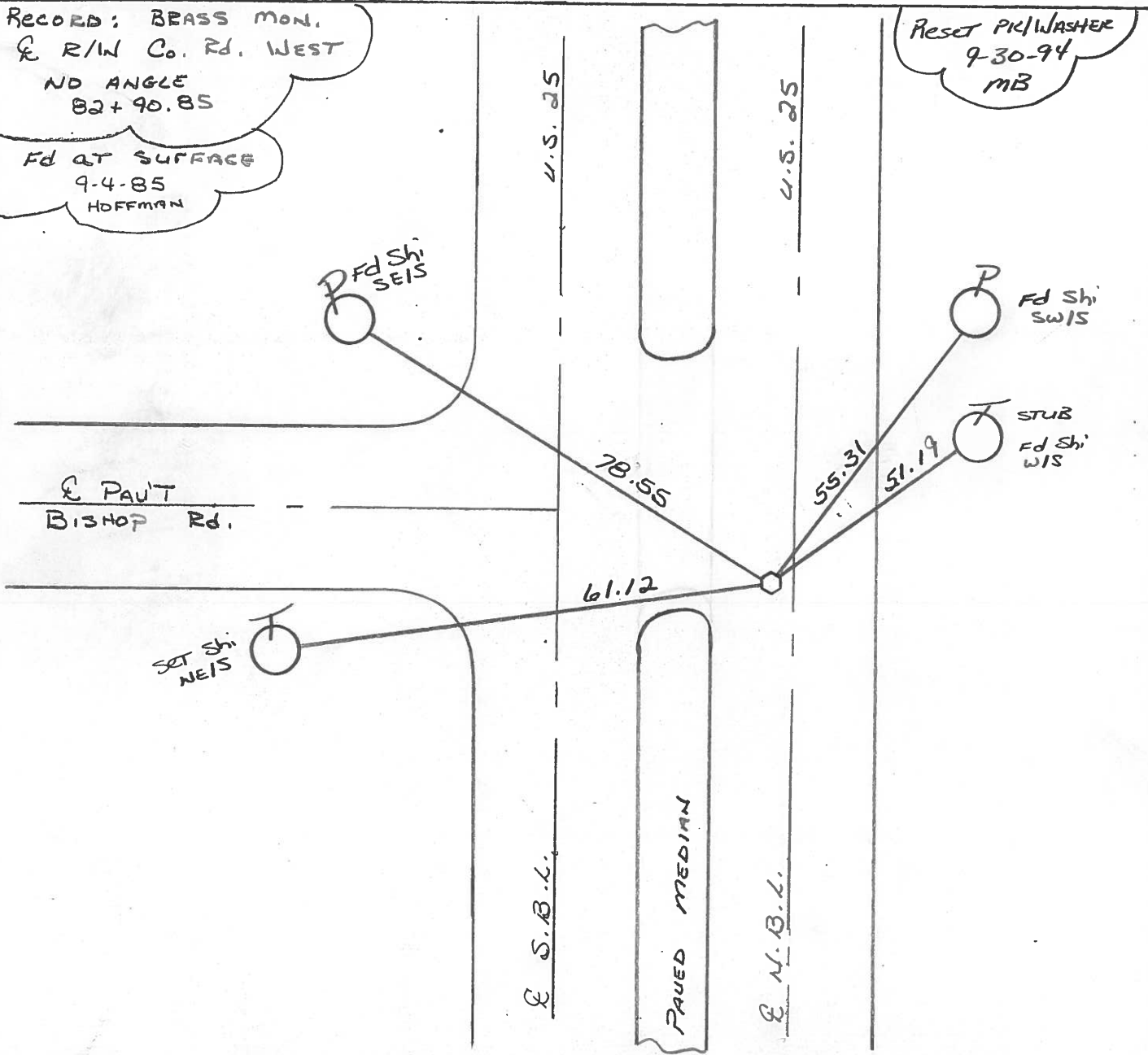
U.S. 25

U.S. 25

E S.B.L.

E N.B.L.

PAVED MEDIAN



Q.D.O.T. DISTRICT 2 SURVEY OFFICE

SHEET _____ OF _____

County Wood S.R. 25

Township PLAIN

Section 12

TSN, RICE

Personnel Hoffman

BARNHISEL H.C.

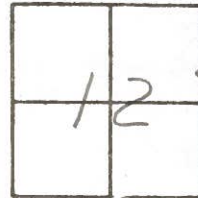
Flournoy R.C.

Date 9-4-85

Weather CLEAR

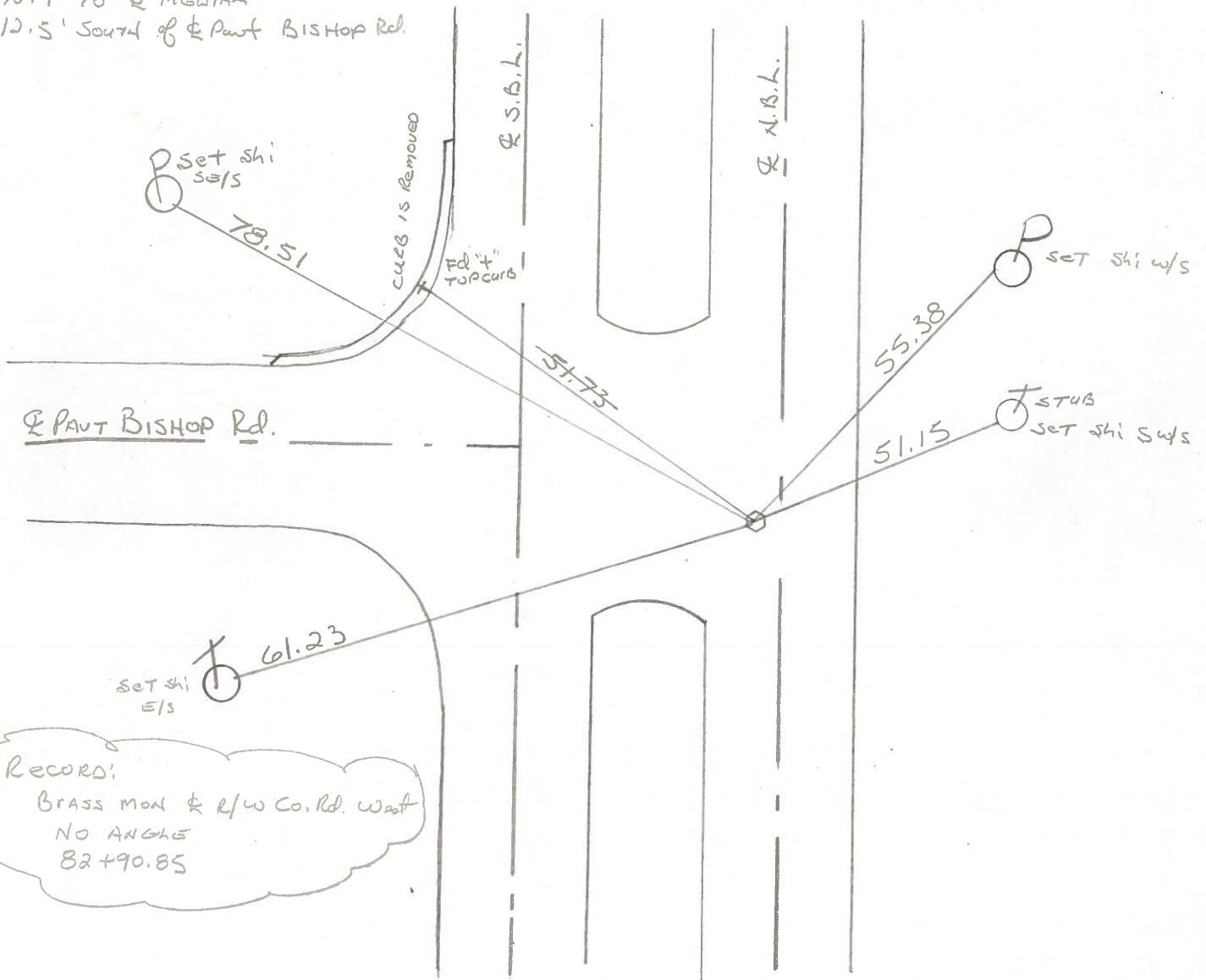
Temp. 80°

#31



Fd BRASS MON @ surface
 2.5' Lt. of & Pavt N.B.L.
 10.9 TO & MEDIUM
 12.5' South of & Pavt BISHOP Rd.

SLM 645+30 ±
 SET SMALL R.R. SPK
 10-11-85 SWM



RECORD:
 BRASS MON & R/W Co. Rd. West
 NO ANGLE
 82+90.85

O.D.O.T. DISTRICT 2 SURVEY OFFICE

SHEET _____ OF _____

County WOOD ^{U.S.} S.R. 25

Date 7-8-71

Township PLAIN

Weather CLOUDY

Section 12

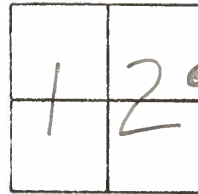
Temp. 78°

T5N, R10E

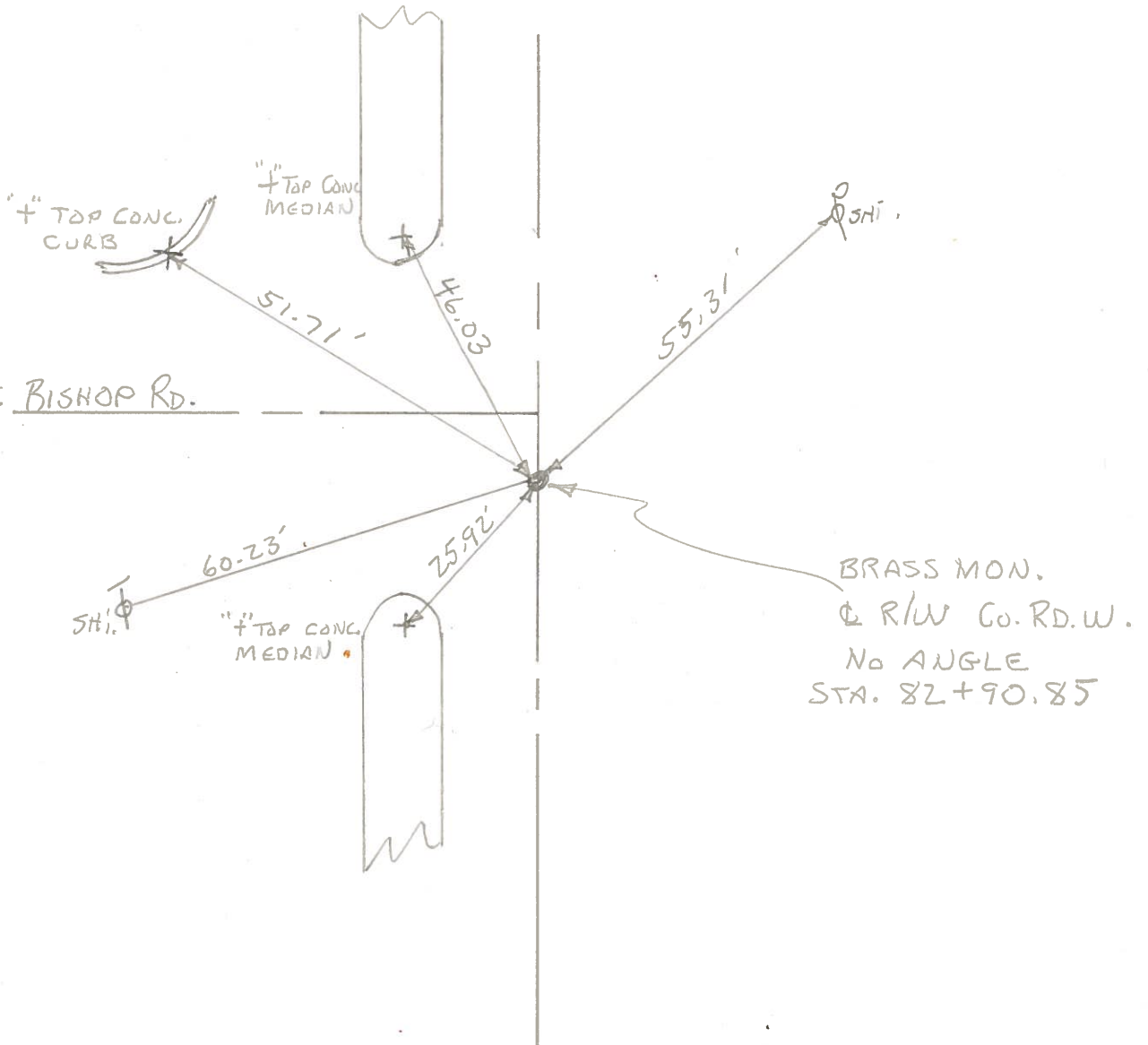
Personnel BURNSIDE

SMITH

BOWERS



#31



| | | | | | | | |
|--|-------|-----------|-------|---------|----------|---------|---------|
| PERSONNEL | TITLE | PERSONNEL | TITLE | COUNTY | Wood | DATE | 3-23-60 |
| | | | | S. R. | U.S. #25 | WEATHER | 9-63 |
| DESCRIPTION | | | | SEC. | | TEMP. | |
| T-35/63 (Moberg Mon. (Raised & Greased)) | | | | | | | |
| | | | | JOB NO. | | | |

29

| LEFT | CENTER LINE | RIGHT |
|--|-------------------|--------------------------------------|
| T-35/63 | | "X" Conc. med. strip S.W. 45.09 |
| Sta. 40+69.51 | 3-23-60 | Shiner in T.P. N.W. 98.30' 98.6 |
| About 80 Rods N. of E 1/4 | Raised Brass Mon. | Shiner in P.P. W. 81.31' 81.24 |
| past sec. 13 Plain twp. | | Shiner in T.P. S.W. 77.86' 78.00 |
| E.R. spike Van Camp Rd. West. | | Shiner in T. Pole S.E. 84.87 |
| ew-Bowling Greens W. Corp. line | | "X" Conc. med. strip N.W. 21.29 |
| #254 | | Shi. in Pav't West 10.86 |
| | | "X" Conc. Med. strip N.W. 45.4 |
| Sta. 52+73.27 | | Shiner in 34" Walnut S.E. 53.11 |
| Cor. stone 33' N. of N.W. | | Shiner in 20" Apple N.E. 81.1 |
| cor. sec. 18 Center twp. | | Shiner in T.P. 63.2 |
| Brass Mon | Newton Rd. | Shiner in 8" twin Elm W. 66.90 |
| #255 | | Shiner cor. Post N.E. 67.40 |
| (30) | | Shiner P. Pole S.E. 52.90 |
| | | "X" Conc. Med. strip S.W. 23.29 |
| | | Shi. in Pav't west 11.86 |
| Sta. 82+90.35 | | Shiner in P.P. N.W. 80.2 |
| E.R. Spike & R/W Co. | | Shiner in T.P. W.S.W. 60.00 |
| Ed. W. No Angle | | Shiner in Rd. sign S.W. 85.40 |
| Set new mon. | Bishop Rd. | Shiner in P. Pole N.E. 55.30 |
| (31) | #256 | "X" Conc. Med. strip N.W. 46.08 |
| | | "X" Conc. Med. strip S.W. 25.90 |
| | | "X" Conc. Med. strip N.W. 41.80 |
| Sta. 92+14.00 | | N.W. cor. Gas. Sta. S.E. 62.32 62.00 |
| & Ed. E. E.R. spike | | N.pt. W. pump island 57.70 |
| BRASS Mon. | Nims Rd. E. | Shiner in P.P. N.E. 38.00 |
| #257 | | Shiner T. Pole N.E. 66.10 |
| (32) | | Shiner P. Pole S.E. 52.10 |
| | | "X" Conc. Med. strip S.W. 42.00 |
| Sta. 106+92.75 | | Shiner in P.P. S.E. 35.40 |
| S.E. cor. sec. 1 Plain Twp. | | Shiner in T.P. S.W. 74.20 |
| Set new mon. | | Shiner in cor. post W. 59.10 |
| (33) | #258 | "X" Conc. Med. strip N.W. 20.50 |
| | | "X" Conc. T W. 7.90 |