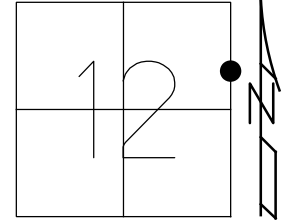


O.D.O.T. DISTRICT 2 SURVEY OFFICE (USE ONLY)

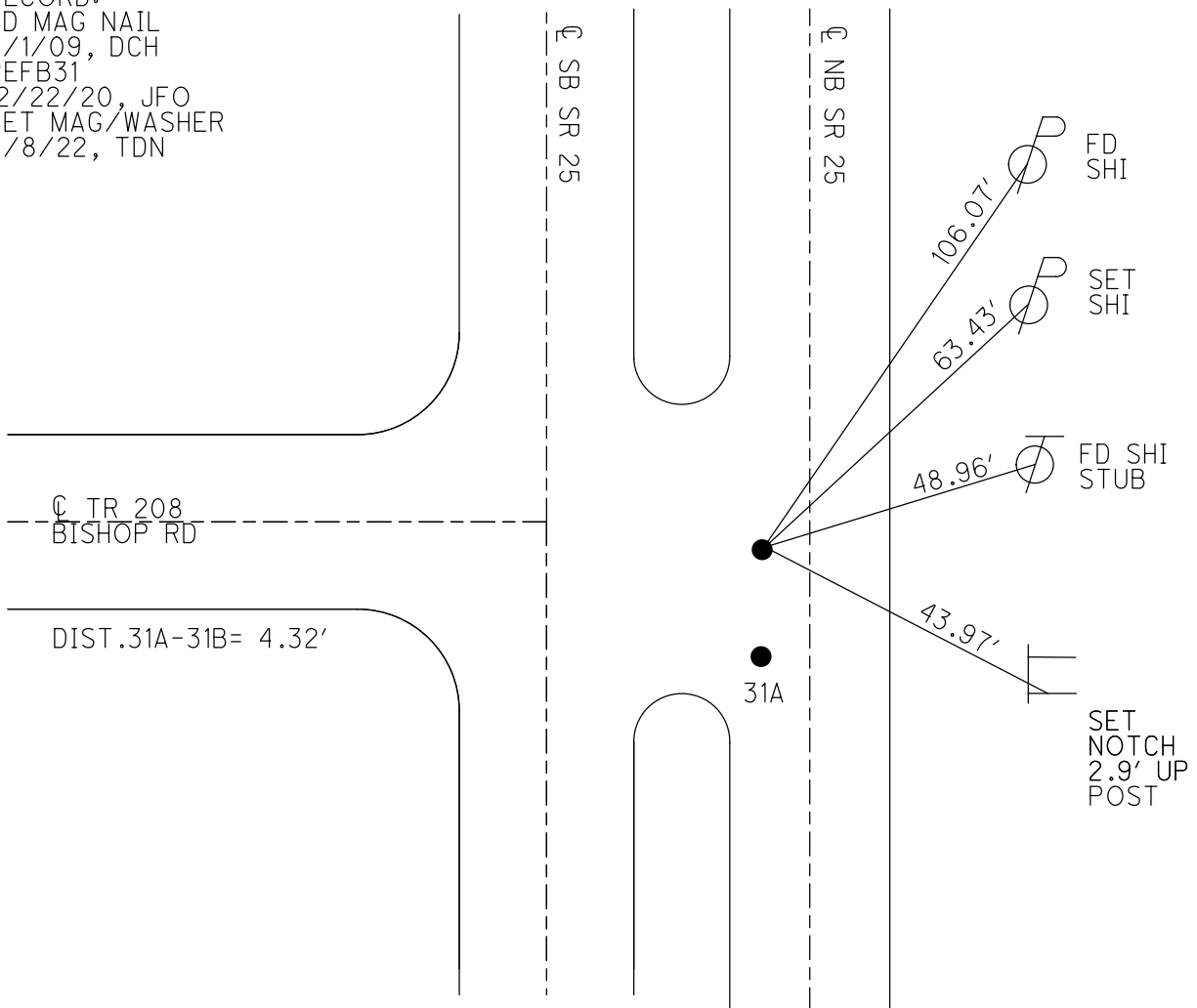
PERSONNEL _____ REFERENCE NO. 31 B SHEET 5 OF 19
 NOTES AUBLE DATE 5/24/22 ROUTE SR 25
 H.C. NIESE WEATHER CLEAR COUNTY WOOD
 R.C. WHITAKER TEMP. 55° TOWNSHIP PLAIN
 DWG BY RHOADES PID 110037 SECTION 12
 T 5 N R 10 E

TYPE MONUMENT MAG NAIL
 ON SURFACE - ~~BELOW~~ ON
 OFFSET \odot PAVEMENT - LT : RT
- TO - EDGE PAVEMENT
 STATION: 656+58.4



HORZ.DATUM: NAD83 2011 GEOID: NAVD88 2018
 GRID: NORTHING: 636636.800 EASTING: 1652856.774

RECORD:
 FD MAG NAIL
 5/1/09, DCH
 REFB31
 12/22/20, JFO
 SET MAG/WASHER
 9/8/22, TDN



O.D.O.T. DISTRICT 2 SURVEY OFFICE

PERSONNEL _____

REFERENCE NO. 31B

SHEET 4 OF 18

NOTES HOMAN

DATE 5-1-09

ROUTE US 25

H.C. ROUSOS

WEATHER CLEAR

COUNTY WOOD

R.C. HOMAN

TEMP. 65°

TOWNSHIP PLAIN

SECTION 12

T 5 S R 10 E

TYPE MONUMENT MAG NAIL

ON SURFACE - ~~BELOW~~ ON SURFACE

LEFT - Q PAV'T - RIGHT _____

_____ TO _____ EDGE PAVEMENT

S.L.M. _____

GPS Northing: 636636.837

Easting: 1652856.7347

