

O.D.O.T. DISTRICT 2 SURVEY OFFICE (USE ONLY)

PERSONNEL

REFERENCE NO. 33

SHEET 7 OF 19

NOTES WHITAKER

DATE 5/25/22

ROUTE SR 25

H.C. NIESE

WEATHER CLOUDY

COUNTY WOOD

R.C. WHITAKER

TEMP. 60°

TOWNSHIP PLAIN

SECTION 12

DWG BY RHOADES

PID 110037

T 5 N R 10 E

TYPE MONUMENT MAG NAIL

ON SURFACE - ~~BELOW~~ ON

OFFSET CL PAVEMENT 4.5' NB CL LT : ~~RT~~

- TO - EDGE PAVEMENT

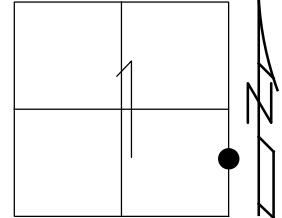
STATION: 680+49.71

HORZ.DATUM: NAD83 2011

GEOID: NAVD88 2018

GRID: NORTHING: 639028.084

EASTING: 1652871.185

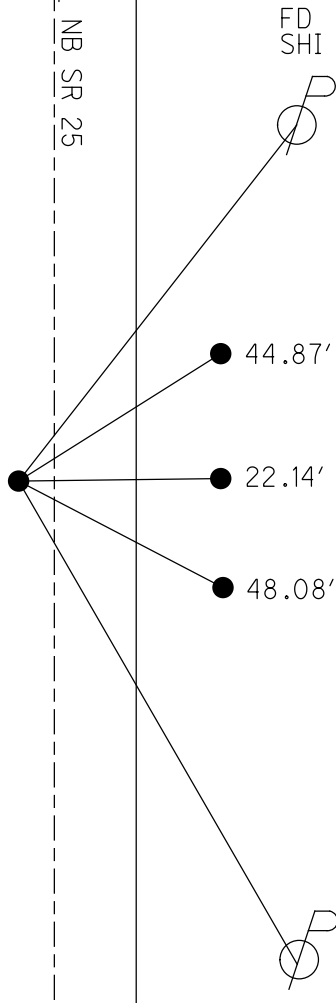


RECORD:
 STA.106+92.75
 FD BRASS MON.
 9-4-85, HOFFMAN
 SET P.K./WASHER
 9-30-94, MB
 FD P.K.NAIL
 5/1/09, DCH
 SET MAG/WASHER
 11-2-09, DCH
 FD MAG NAIL
 REF33
 12/22/20, JFO
 SET MAG/WASHER
 9/8/22, TDN


 GREAT LAKES FORD

CL SB SR 25

CL NB SR 25



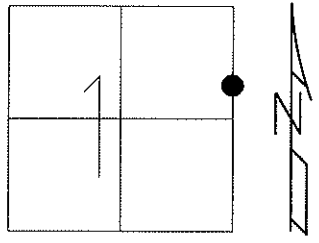
SET BARN SPIKES

SET SHI

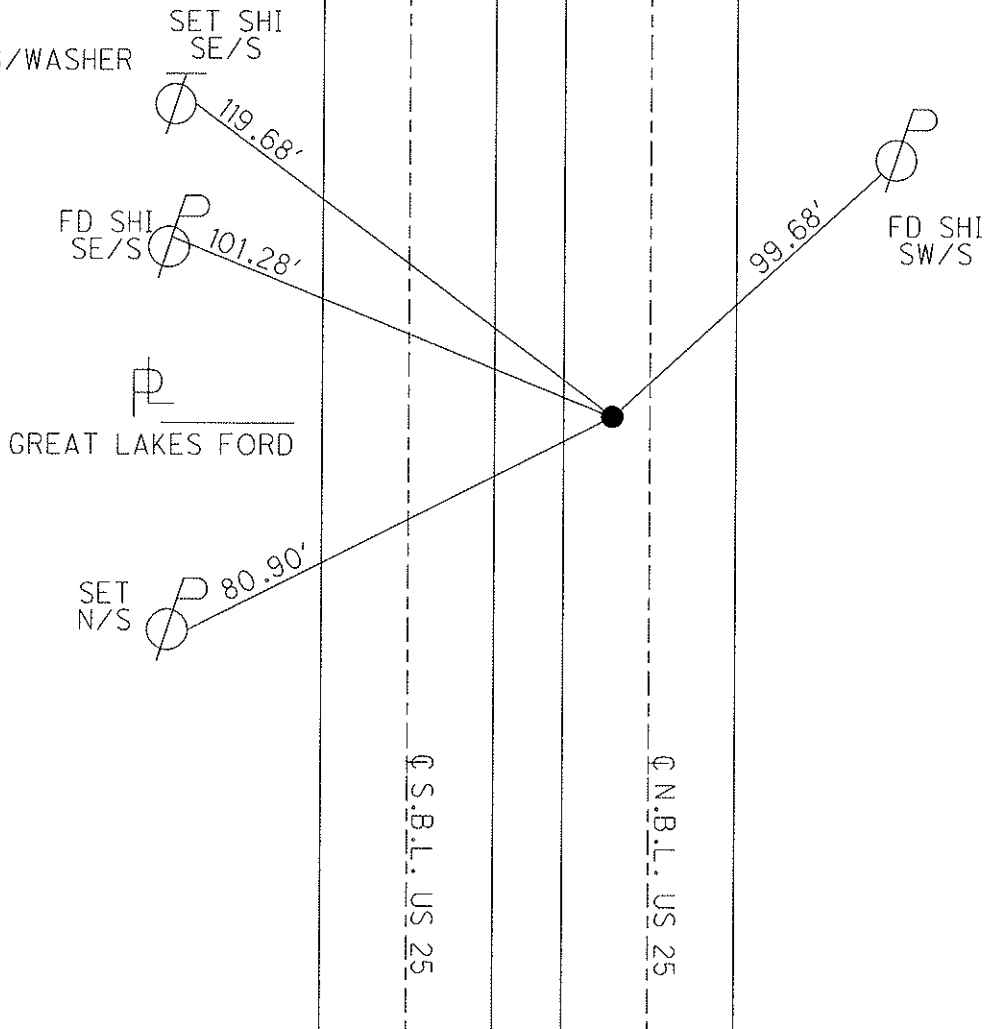
O.D.O.T. DISTRICT 2 SURVEY OFFICE

PERSONNEL	REFERENCE NO. <u>33</u>	SHEET <u>6</u> OF <u>18</u>
NOTES <u>HOMAN</u>	DATE <u>5-1-09</u>	ROUTE <u>US 25</u>
H.C. <u>ROUSOS</u>	WEATHER <u>CLOUDY</u>	COUNTY <u>WOOD</u>
R.C. <u>HOMAN</u>	TEMP. <u>65°</u>	TOWNSHIP <u>PLAIN</u>
		SECTION <u>1</u>
		T <u>5</u> N R <u>10</u> E

TYPE MONUMENT PK NAIL
 ON SURFACE - ~~BELOW~~ YES
 LEFT - Q PAV'T - ~~RIGHT~~ 4.5' NBL
16.3 TO RT EDGE PAVEMENT
 S.L.M. 669+01
 GPS Northing: 639028.096 Easting: 1652871.088



RECORD: 106+92.75
 FD. BRASS MON
 AT SURFACE
 9-4-85
 HOFFMAN
 RESET PK/WASHER
 9-30-94
 MB
 RESET MAG/WASHER
 11-2-09
 DCH



O.D.O.T. DISTRICT 2 SURVEY OFFICE

PERSONNEL

REFERENCE NO. 33

SHEET 4 OF 12

NOTES BARNHISEL

H.C. Cordes

DATE 8-1-94

ROUTE U.S. 25

R.C. HERMILLER

WEATHER CLEAR

COUNTY WOOD

VAN DUSEN II

TEMP. +75°

TOWNSHIP PLAIN

SECTION 1

T 5 N R 10 E

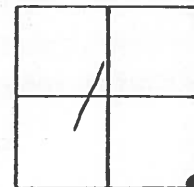
TYPE MONUMENT Sm. RR Spk

ON SURFACE - ~~BELOW~~ yes

LEFT- & PAV'T. - ~~RIGHT~~ 4.5 N.B.L

16.3 TO RT EDGE PAVEMENT

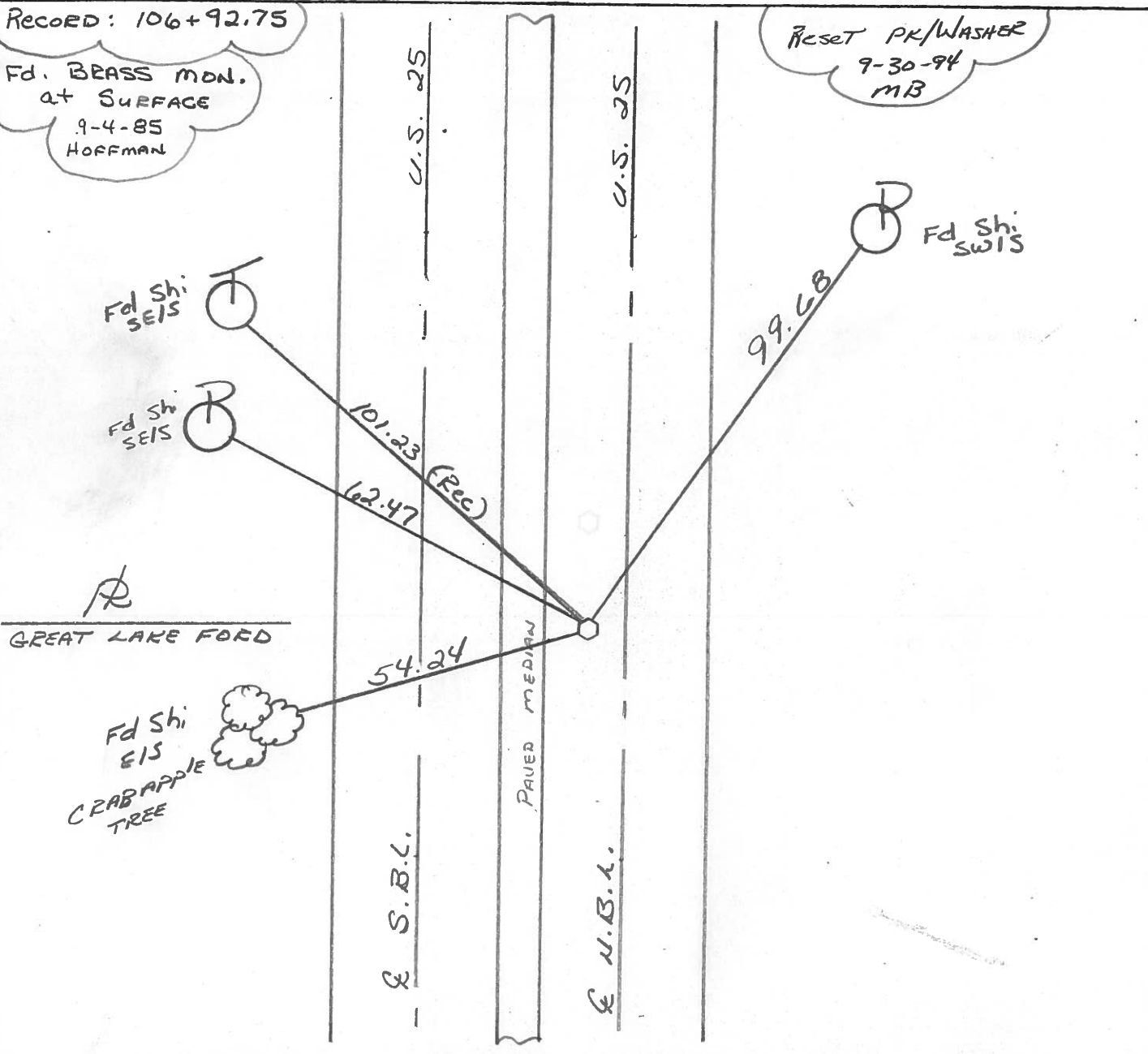
S.L.M. 669+01



RECORD: 106+92.75

Fd. BRASS MON.
AT SURFACE
9-4-85
HOFFMAN

RESET PK/WASHER
9-30-94
MB



Q.D.O.T. DISTRICT 2 SURVEY OFFICE

SHEET _____ OF _____

County Wood S.R. 25

Township PLAIN

Section 1

TSN, R/OE

Personnel Hoffman

BARNHISEL H.C.

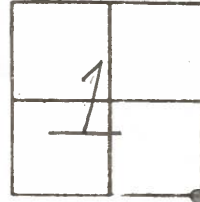
Flournoy R.C.

#33

Date 9-4-85

Weather P. CLEAR

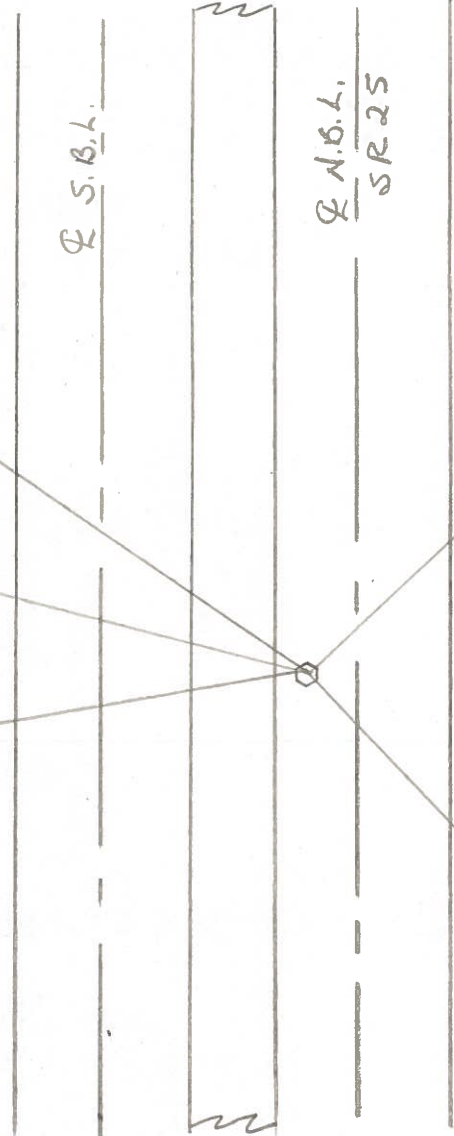
Temp. 85°



Fcl BRASS MON AT SURFACE
4.9' Lt. of & Pawt N.B.L.
7.9' TO & MEDIAN

SLM 669+25±
SET SMALL R.R. SPK.
10-11-85 SWH

Record:
106+92.75



set shi
SE/S

101.23

set shi
E/S

62.40

DISHOP FORD

set shi
E/S



54.32

CRABAPPLE

99.69

set shi SW/S

118.40

set shi NW/S

O.D.O.T. DISTRICT 2 SURVEY OFFICE

SHEET _____ OF _____

County WOOD ^{U.S.} S.R. 25

Date 7-8-71

Township PLAIN

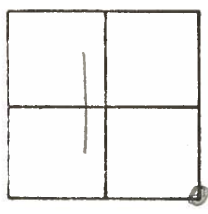
Weather PT. CLOUDY

Section 1

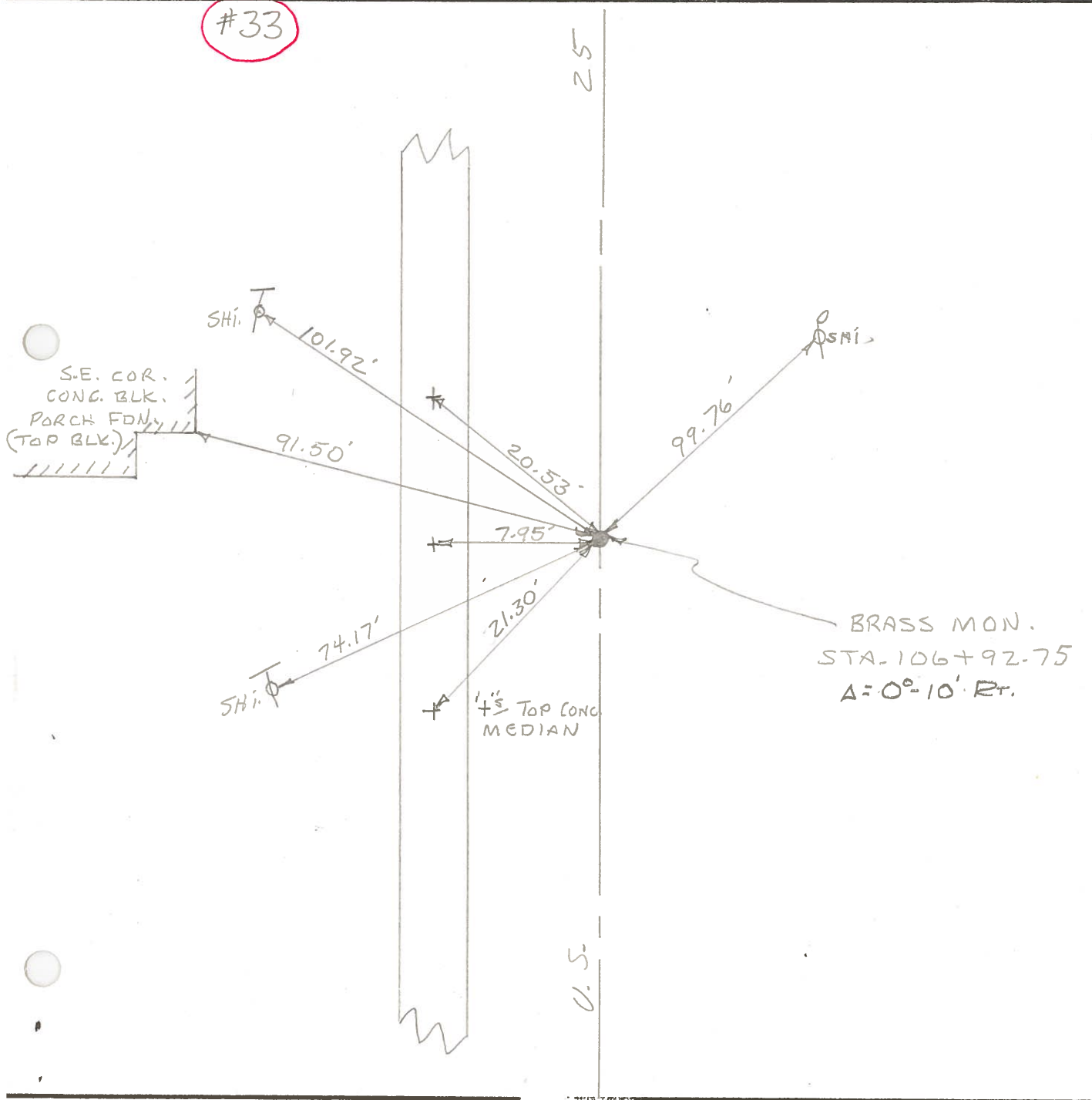
Temp. 85°

T5N, R10E

Personnel BURNSIDE
SMITH
BOWERS



#33



PERSONNEL TITLE PERSONNEL TITLE

COUNTY Wood

DATE 3-23-60

S. R. U.S. #25

WEATHER 9-63

SEC.

TEMP.

DESCRIPTION

(Moberg Mon. (Raised & Greased))

JOB NO.

LEFT T-35/63

CENTER LINE

RIGHT

(29)

Sta. 40+69.51
About 80 Rods N. of E 1/4
past sec. 13 Plain twp.
~~E.R. spike~~ Van Camp Rd. West.
ew-Bowling Greens W. Corp. line
#254

3-23-60
Raised
BRASS MON.

"X" Conc. Med. Strip S.W. 45.09
Shiner in T.P. N.W. 98.30' 98.6'
Shiner in P.P. W. 81.81' 81.24
Shiner in T.P. S.W. 77.86' 78.00
Shiner in T. Pole S.E. 84.87
"X" Conc. Med. Strip N.W. 21.29
Shi. in Pav't West 10.86

(30)

Sta. 52+73.27
Cor. stone 33' N. of N.W.
cor. sec. 18 Center twp.
Brass mon
#255
Newton Rd.

"X" Conc. Med. Strip N.W. 45.4
Shiner in 34" Walnut S.E. 53.0
Shiner in 20" Apple N.E. 81.1
Shiner in T.P. 63.2
Shiner in 8" twin Elm W. 66.90
Shiner cor. Post N.E. 67.43
Shiner P. Pole S.E. 52.90
"X" Conc. Med. Strip S.W. 23.29
Shi. in Pav't West 11.86

(31)

Sta. 82+90.35
E.R. Spike & R/W Co.
Ed. W. No Angle
Set new mon.
#256
Bishop Rd.

Shiner in P.P. N.W. 80.2
Shiner in T.P. W.S.W. 60.00
Shiner in Ed. sign S.W. 85.40
Shiner in P. Pole N.E. 55.30
"X" Conc. Med. Strip N.W. 46.08
"X" Conc. Med. Strip S.W. 25.90

(32)

Sta. 92+14.00
& Ed. E. E.R. Spike
BRASS MON.
#257
Nims Rd. E

"X" Conc. Med. Strip N.W. 41.8
N.W. cor. Gas. Sta. S.E. 62.32 62.7
N. Pt. W. pump island 57.7
Shiner in P.P. N.E. 38.0
Shiner T. Pole N.E. 66.1
Shiner P. Pole S.E. 52.7
"X" Conc. Med. Strip S.W. 42.0

(33)

Sta. 106+92.75
S.E. cor. sec. 1 Plain Twp.
Set new mon.
#258

Shiner in P.P. S.E. 35.4
Shiner in T.P. S.W. 74.2
Shiner in cor. post W. 59.18
"X" Conc. Med. Strip N.W. 20.50
"X" Conc. " " W. 7.90