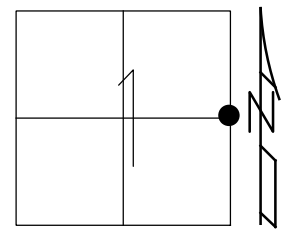


O.D.O.T. DISTRICT 2 SURVEY OFFICE (USE ONLY)

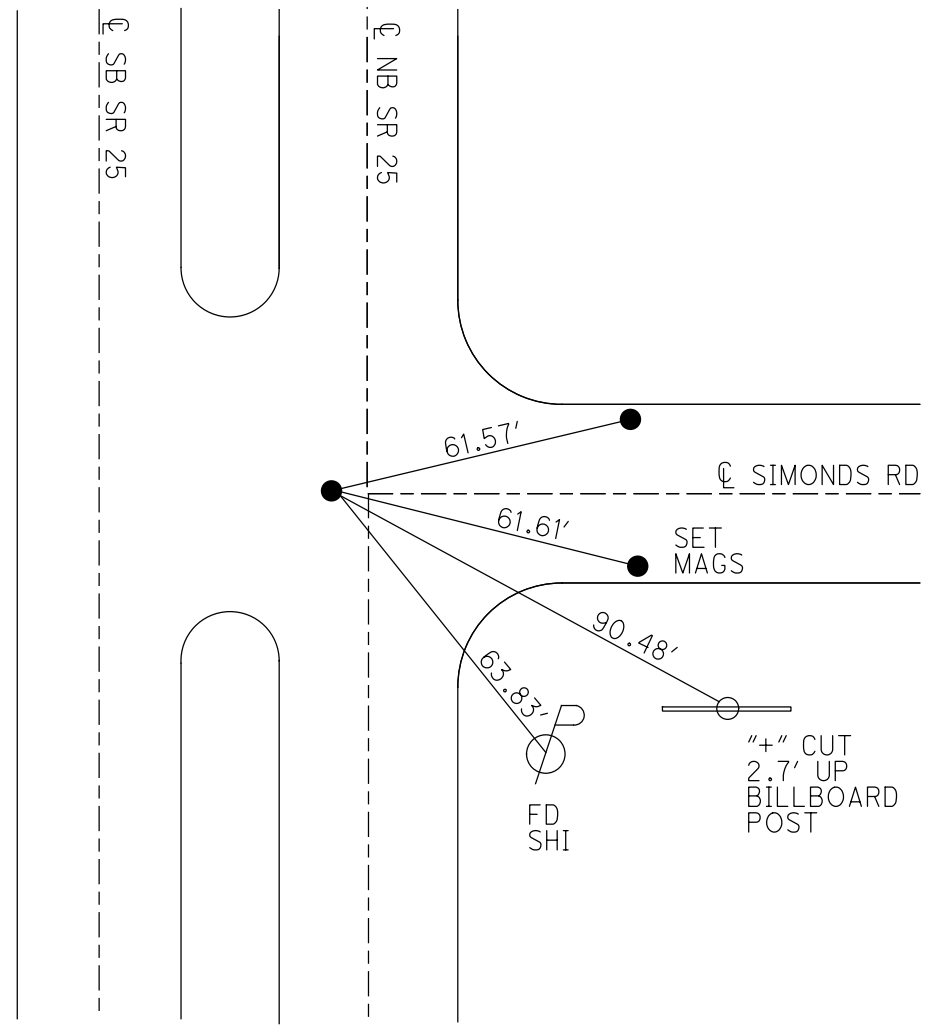
PERSONNEL _____ REFERENCE NO. 34 SHEET 8 OF 19
 NOTES WHITAKER DATE 5/25/22 ROUTE SR 25
 H.C. NIESE WEATHER CLOUDY COUNTY WOOD
 R.C. WHITAKER TEMP. 60° TOWNSHIP PLAIN
 DWG BY RHOADES PID 110037 SECTION 1
 T 5 N R 11 E

TYPE MONUMENT MAG NAIL
 ON SURFACE - ~~BELOW~~ ON
 OFFSET \odot PAVEMENT 4.5', NB \odot LT : ~~RT~~
- TO - EDGE PAVEMENT
 STATION: 705+37.9



HORZ.DATUM: NAD83 2011 GEOID: NAVD88 2018
 GRID: NORTHING: 641516.281 EASTING: 1652894.478

RECORD:
 FD BRASS MON.
 9-4-85
 SET P.K./WASHER
 9-30-94
 FD MAG NAIL
 11-02-09, DCH
 FD MAG NAIL
 REF34
 12/22/20, JFO
 SET MAG/WASHER
 9/8/22, TDN

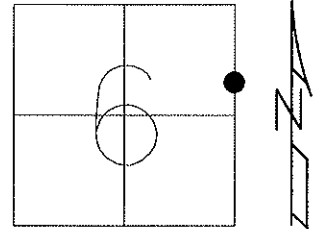


"+" CUT
 2.7' UP
 BILLBOARD
 POST

O.D.O.T. DISTRICT 2 SURVEY OFFICE

PERSONNEL	REFERENCE NO. <u>34</u>	SHEET <u>7</u> OF <u>18</u>
NOTES <u>HOMAN</u>	DATE <u>5-3-09</u>	ROUTE <u>US 25</u>
H.C. <u>ROUSOS</u>	WEATHER <u>CLEAR</u>	COUNTY <u>WOOD</u>
R.C. <u>HOMAN</u>	TEMP. <u>65°</u>	TOWNSHIP <u>CENTER</u>
		SECTION <u>6</u>
		T. <u>5</u> S R. <u>11</u> E

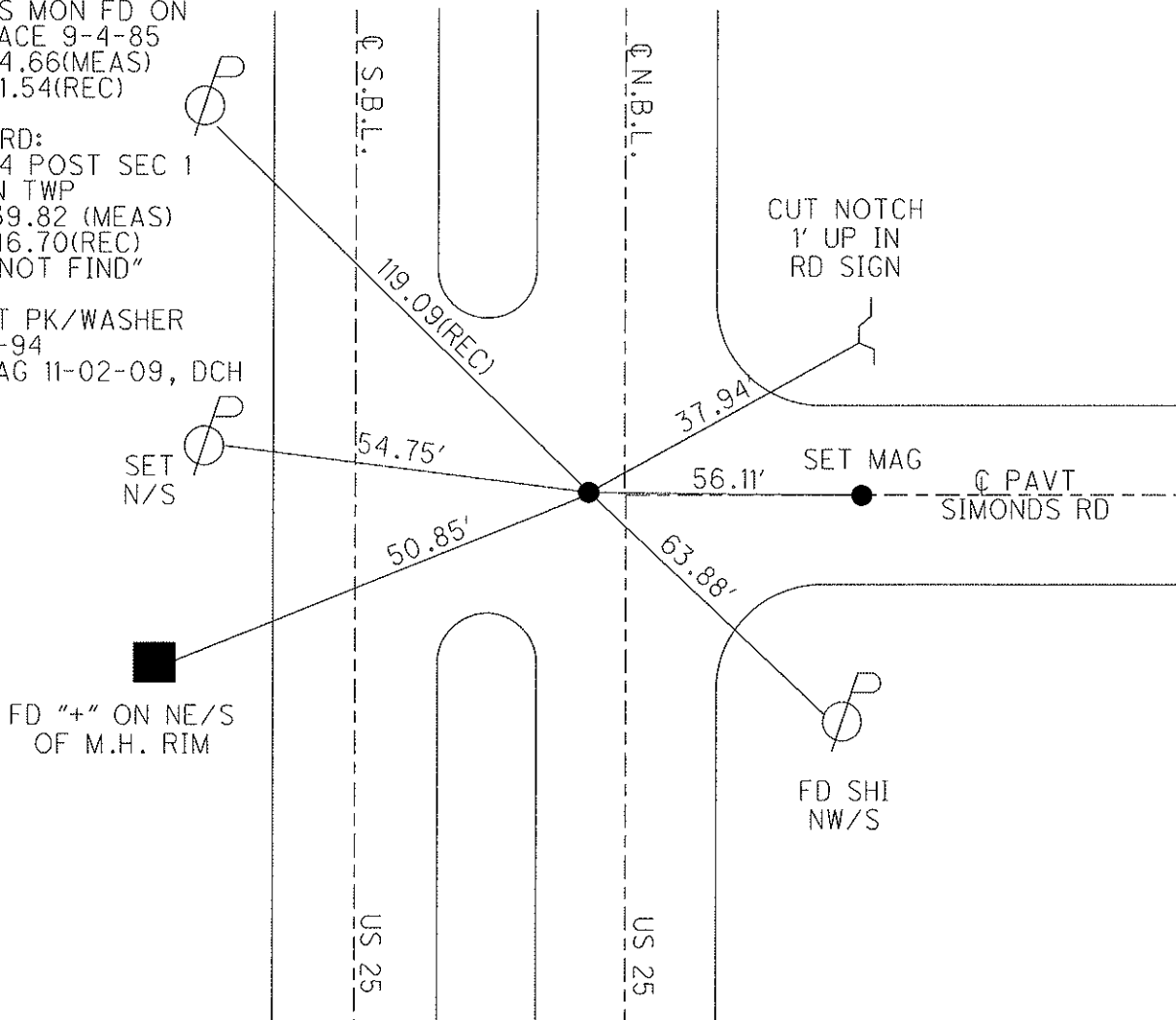
TYPE MONUMENT SM RR SPK
~~ON SURFACE~~ - BELOW 2"
 LEFT - Q PAV'T - ~~RIGHT~~ 4.5' NBL
7.8' TO Q ~~EDGE PAVEMENT~~ MEDIAN
 S.L.M. 693+98 (ON CL SIMONDS RD.)
 GPS Northing: 641516.336 Easting: 1652894.330



RECORD: W. 1/4 POST
 SEC 6 CENTER TWP
 BRASS MON FD ON
 SURFACE 9-4-85
 131+74.66(MEAS)
 131+81.54(REC)

RECORD:
 E. 1/4 POST SEC 1
 PLAIN TWP
 133+39.82 (MEAS)
 133+46.70(REC)
 "DID NOT FIND"

RESET PK/WASHER
 9-30-94
 FD MAG 11-02-09, DCH



O.D.O.T. DISTRICT 2 SURVEY OFFICE

PERSONNEL

REFERENCE NO. 34

SHEET 5 OF 12

NOTES BARNHISEL

H.C. CORDES

DATE 8-1-94

ROUTE U.S. 25

R.C. HERMILLER

WEATHER CLEAR

COUNTY WOOD

(VAN DUSEN M)

TEMP. +75°

TOWNSHIP CENTER

SECTION 6

T. 5 N. R. 11 E.

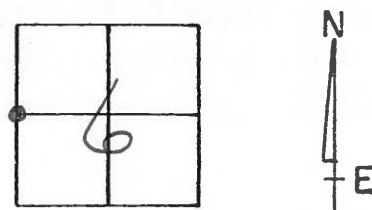
TYPE MONUMENT Sm. RR Spk

ON SURFACE - ~~BELOW~~ yes

LEFT- & PAV'T. - ~~RIGHT~~ 45 N.B.L.

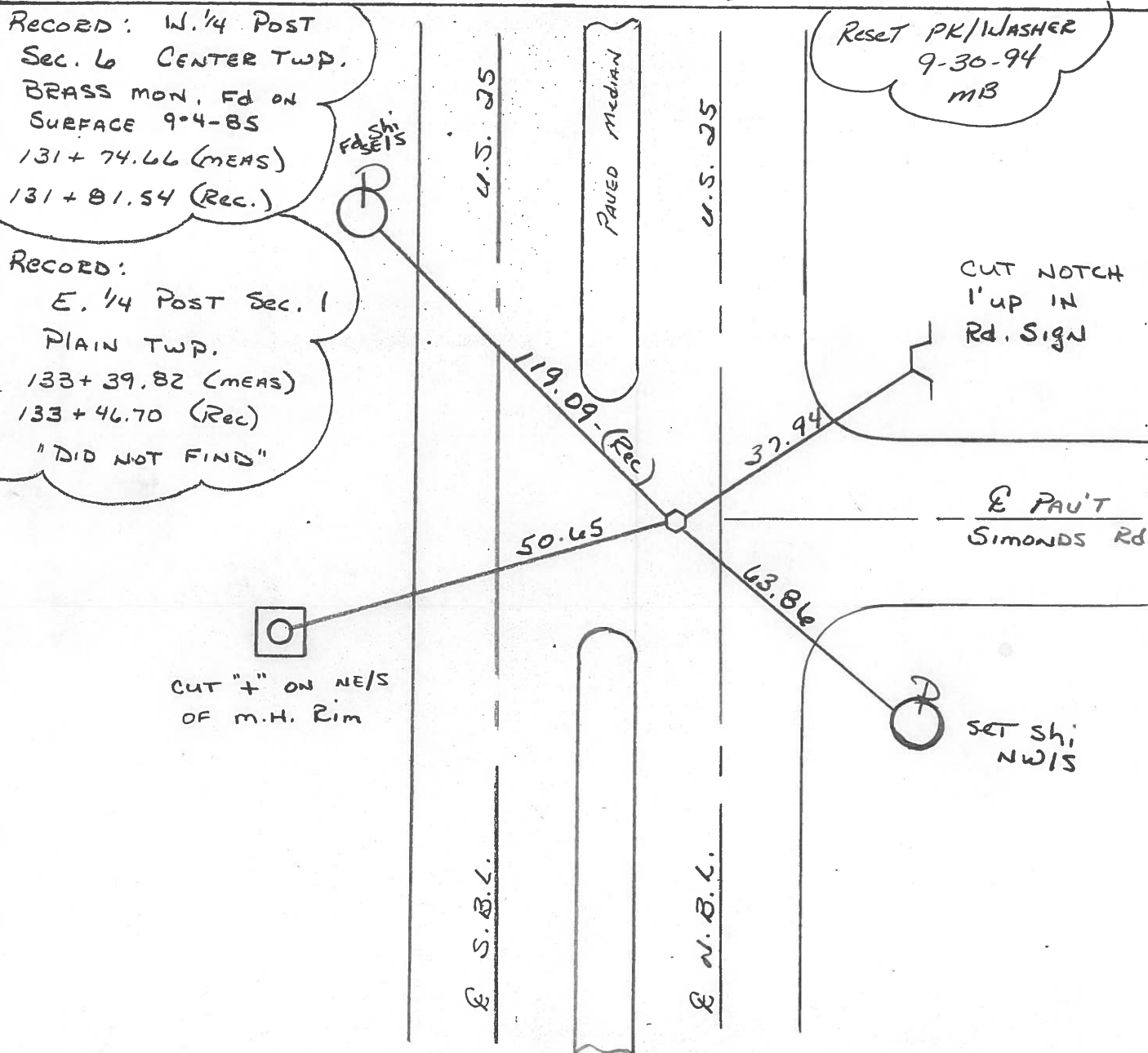
7.8 TO & ~~EDGE PAVEMENT~~ median

S.L.M. 693+98 (ON E B SIMONDS Rd)



RECORD: W. 1/4 POST
Sec. 6 CENTER TWP.
BRASS MON. FD ON
SURFACE 9-4-85
131+74.66 (MEAS)
131+81.54 (REC.)

RECORD:
E. 1/4 POST Sec. 1
PLAIN TWP.
133+39.82 (MEAS)
133+46.70 (REC)
"DID NOT FIND"



Q.D.O.T. DISTRICT 2 SURVEY OFFICE

SHEET _____ OF _____

County Wood S.R. 25

Date 9-4-85

Township CENTER

Weather P. CLEAR

Section 6

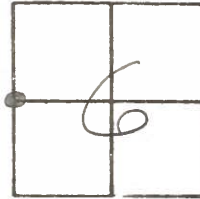
Temp. 85°

T5N, R1E

Personnel Hoffman

BARNHISEL H.C.

FLORENCOY R.C.



#34

Fed Brass mod @ surface
 5.8' LT. of & Post N.B.L.
 7.6' TO & MEDIAN
 ON & Post SIMONOS Rd.

SLM 696 + 14 ±

Set SMALL R.C. SAK
 11-1-85 SWH

Set shi
 sets
 119.09

± S.B.L.

± N.B.L.
 SR25

Fd "1" top curb
 out

57.03

± Post SIMONOS
 SET Nail/shi ROAD

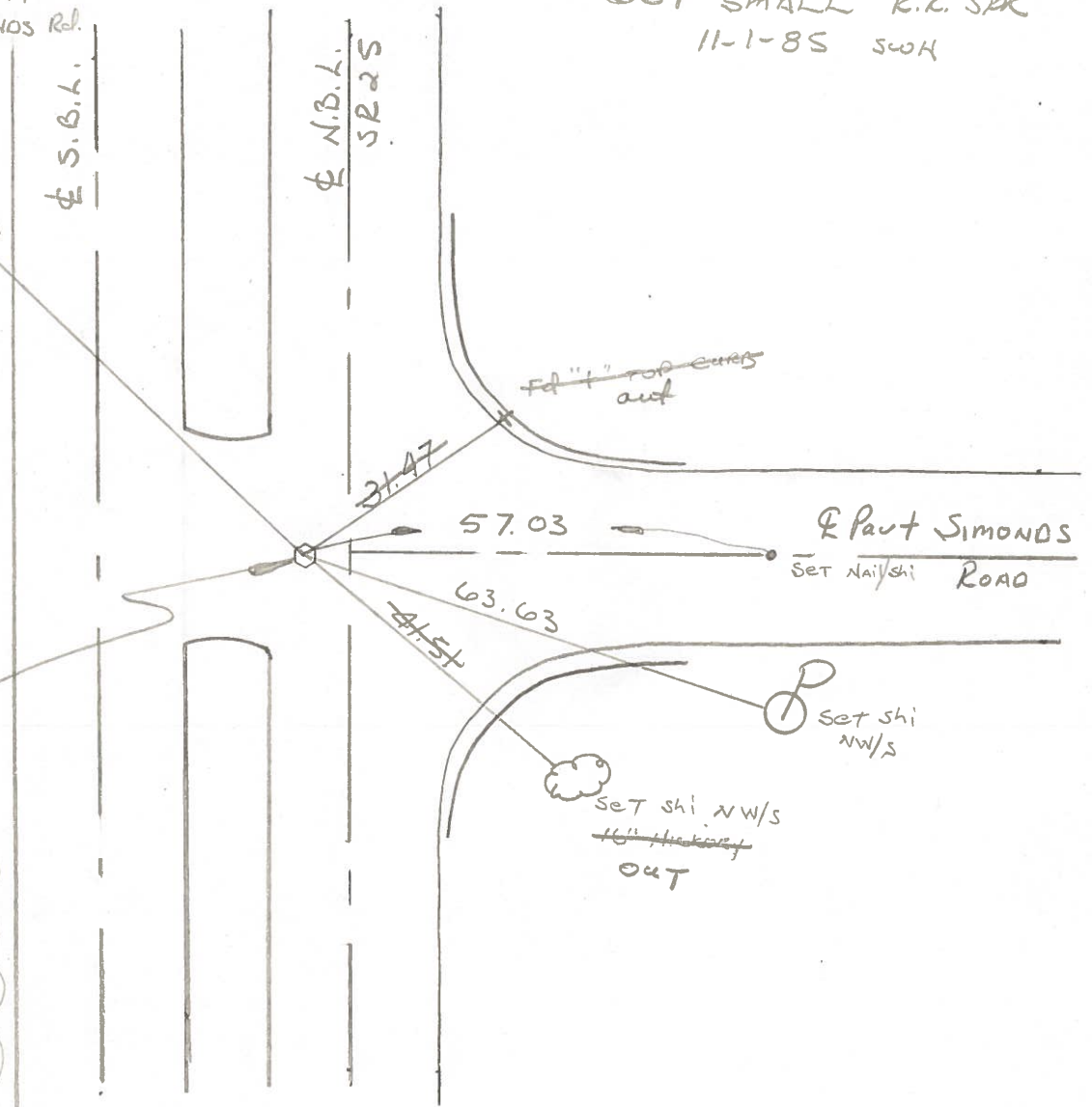
63.63

Set shi
 NW/S

Set shi NW/S
~~16" Hickory~~
 OUT

RECORD:
 W 1/4 POST Sec 6
 CENTER TWP
 BRASS MOD.
 131 + 74.66 (MEAS)
 + 81.54 (Rec)

RECORD:
 E 1/4 POST sec 1
 PLAIN TWP
 133 + 39.82 (MEAS)
 + 46.70 (REC)
 "DID NOT FIND"



ODOT DISTRICT 2 SURVEY OFFICE

SHEET _____ OF _____

County WOOD ^{U.S.} ~~S.R.~~ 25

Date 7-8-71

Township CENTER

Weather PT. CLOUDY

Section 6

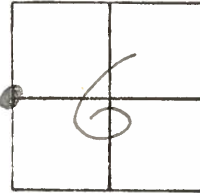
Temp. 85°

T5N, R1E

Personnel BURNSIDE

SMITH

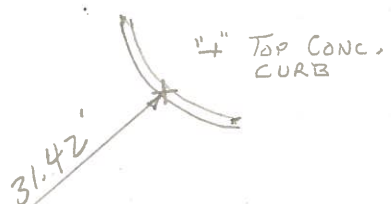
BOWERS



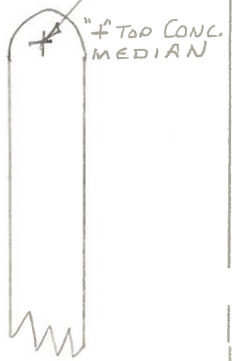
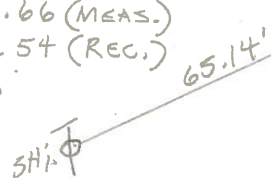
#34

E. 1/4 POST SEC. 1
PLAIN TWP.
STA. 133+39.82 (MEAS.)
446.70 (REC.)

DID NOT FIND



W. 1/4 POST SEC. 6
CENTER TWP.
BRASS MON.
STA. 131+74.66 (MEAS.)
+81.54 (REC.)
 $\Delta = 0^{\circ}00'$



25

U.S.

SIMOND ROAD

31.42'

29.15'

63.65'

65.14'

28.08'

41.54'

SHI. 14" HICKORY

SHI.

PERSONNEL	TITLE	PERSONNEL	TITLE	COUNTY	DATE
Sworden & crew				Wood	3-23-60
				S. R.	U.S. #25
				WEATHER	
				SEC.	TEMP.
DESCRIPTION	LEFT	CENTER LINE	RIGHT	JOB NO.	

Sta. 131 + 74.66 (mea) + 81.54 (Rec.) W 1/4 post sec. 6 Center twp. Iron pin <u>BRASS Mon.</u> (34) #259		(Simonds Rd)	Shiner in P. Pole S.S.W. 63.0 Shiner in hickory S.E. 41.64-41.7 Shiner in 14" Ash N.E. 44.5 Shiner in T.P. S.W. 65.9 "X" Conc. Med. strip N.W. 29.2 "X" ✓ ✓ ✓ S.W. 28.1
Sta. 133 + 39.82 (mea) + 46.70 (Rec.) E. 1/4 post sec. 1 Plain twp. #260		Did Not Find	Pin suppose to be gone
Sta. 147 + 61.65 (mea) + 69.19 (Rec.) E R/W (Union hill Rd.) <u>BRASS Mon.</u> (35) #261			"X" Conc. Med. strip N.W. 26.86 S.W. to T.P. 109.50 W.N.W. to T.P. 61.83 S.E. to P.P. 50.72-36.43 "X" Conc. Med. strip S.W. 37.42 .40 "X" Conc. Med. strip S.W. 31.16 44.27 Shiner in 12" ^{elm} maple N.E. 37.92
Sta. 160 + 83.77 (mea) + 91.68 (rec.) N.W. cor. sec. 6 center twp. Iron Pin Δ = 0°-08' Lt. (Sugar Ridge Rd.) <u>BRASS Mon.</u> (36) #262			Shiner in maple W.N.W. 97.63 Shiner in maple W.S.W. 77.07 Shiner in walnut E.S.E. 56.5 Shiner in P. Pole S.E. 52.5 "X" in conc. Med. strip N.W. 41.4
Sta. 186 + 40.25 E. 1/4 post N. sec. 36 Plain twp. Cor. Stone P.I. Δ = 0°-12' Rt. <u>BRASS Mon.</u> Cross Creek Rd. (37) #263			gone Shiner in N side 12" walnuts S.E. 36. ✓ Shiner in S side 15" Apple N.E. 72. ✓ X in N end N.E. wing wall E.S.E. 28. ✓ Shiner in 14" Ash N.E. 61.1 ✓ Shiner in 10" Walnut E. 27.4 N.E. cor. conc. cor. post S.W. 74.2 Shiner in P. Pole N.E. 74.9 "X" Top Curb S.E. 21.0 "X" Top Curb N.E. 54.6