

O.D.O.T. DISTRICT 2 SURVEY OFFICE (USE ONLY)

PERSONNEL _____

REFERENCE NO. 35

SHEET 9 OF 19

NOTES AUBLE

DATE 5/27/22

ROUTE SR 25

H.C. NIESE

WEATHER BREEZY

COUNTY WOOD

R.C. WHITAKER

TEMP. 65°

TOWNSHIP PLAIN

SECTION 1

DWG BY RHOADES PID 110037

T 5 N R 10 E

TYPE MONUMENT BRASS MON

~~ON SURFACE~~ - BELOW 5"

OFFSET C PAVEMENT 4.4' NB C LT : ~~RT~~

- TO - EDGE PAVEMENT

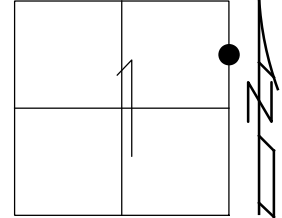
STATION: 720+24.98

HORIZ.DATUM: NAD83 2011

GEOID: NAVD88 2018

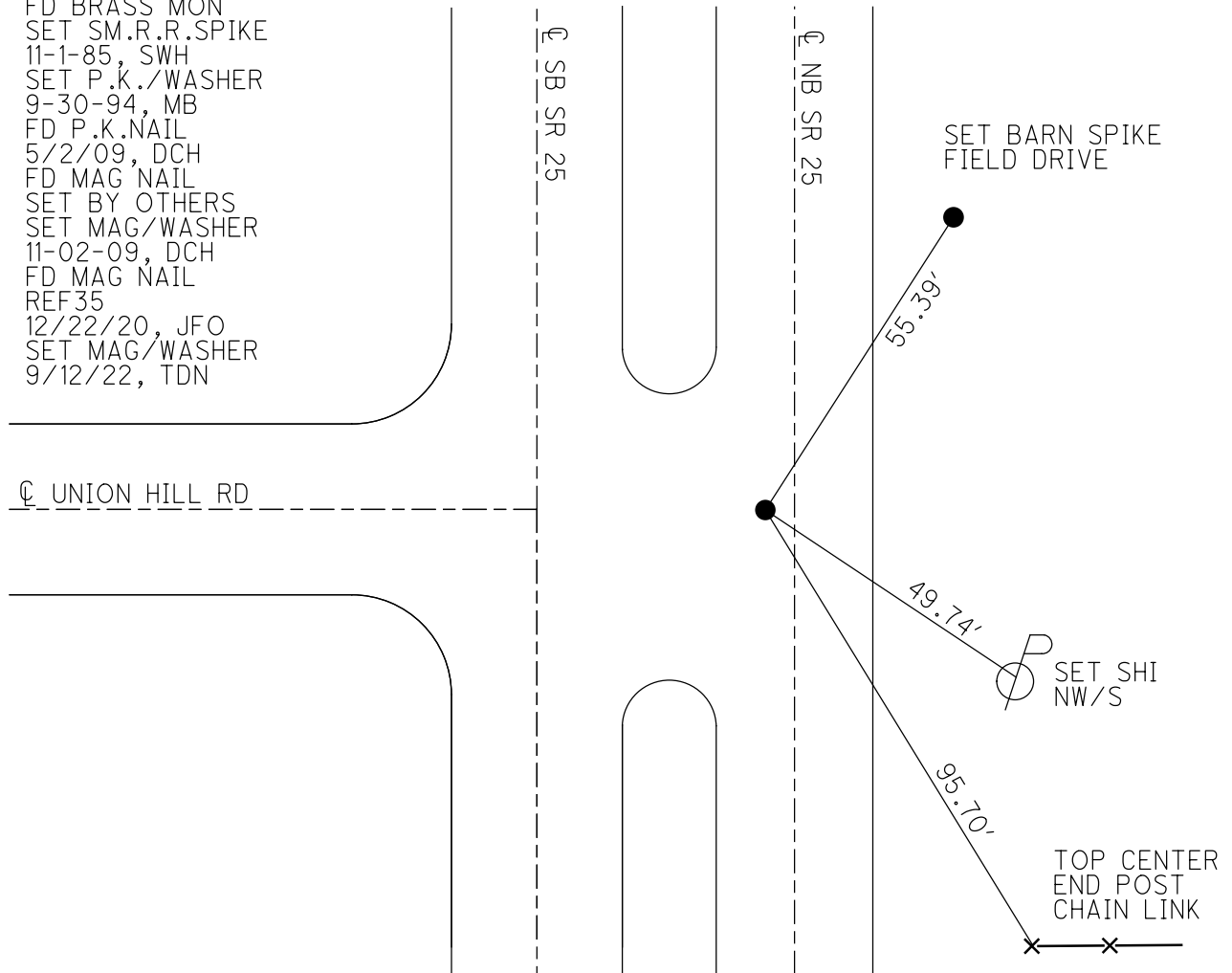
GRID: NORTHING: 643003.365

EASTING: 1652908.252



RECORD:
 FD BRASS MON
 SET SM.R.R.SPIKE
 11-1-85, SWH
 SET P.K./WASHER
 9-30-94, MB
 FD P.K.NAIL
 5/2/09, DCH
 FD MAG NAIL
 SET BY OTHERS
 SET MAG/WASHER
 11-02-09, DCH
 FD MAG NAIL
 REF35
 12/22/20, JFO
 SET MAG/WASHER
 9/12/22, TDN

C UNION HILL RD



O.D.O.T. DISTRICT 2 SURVEY OFFICE

PERSONNEL

REFERENCE NO. 35

SHEET 8 OF 18

NOTES HOMAN

DATE 5-2-09

ROUTE US 25

H.C. ROUSOS

WEATHER CLEAR

COUNTY WOOD

R.C. HOMAN

TEMP. 70°

TOWNSHIP PLAIN

SECTION 1

T 5 N R 10 E

TYPE MONUMENT PK NAIL

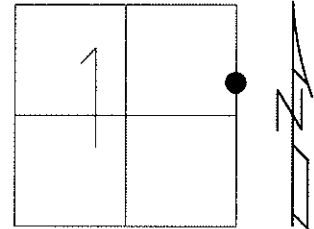
ON SURFACE - ~~BELOW~~ YES

LEFT - ☉ PAV'T - ~~RIGHT~~ 3.8' N.B.L.

16.2' TO RT EDGE PAVEMENT

S.L.M. 708+88, ON ☉ OF UNION HILL RD.

GPS Northing: 643003.461 Easting: 1652908.237



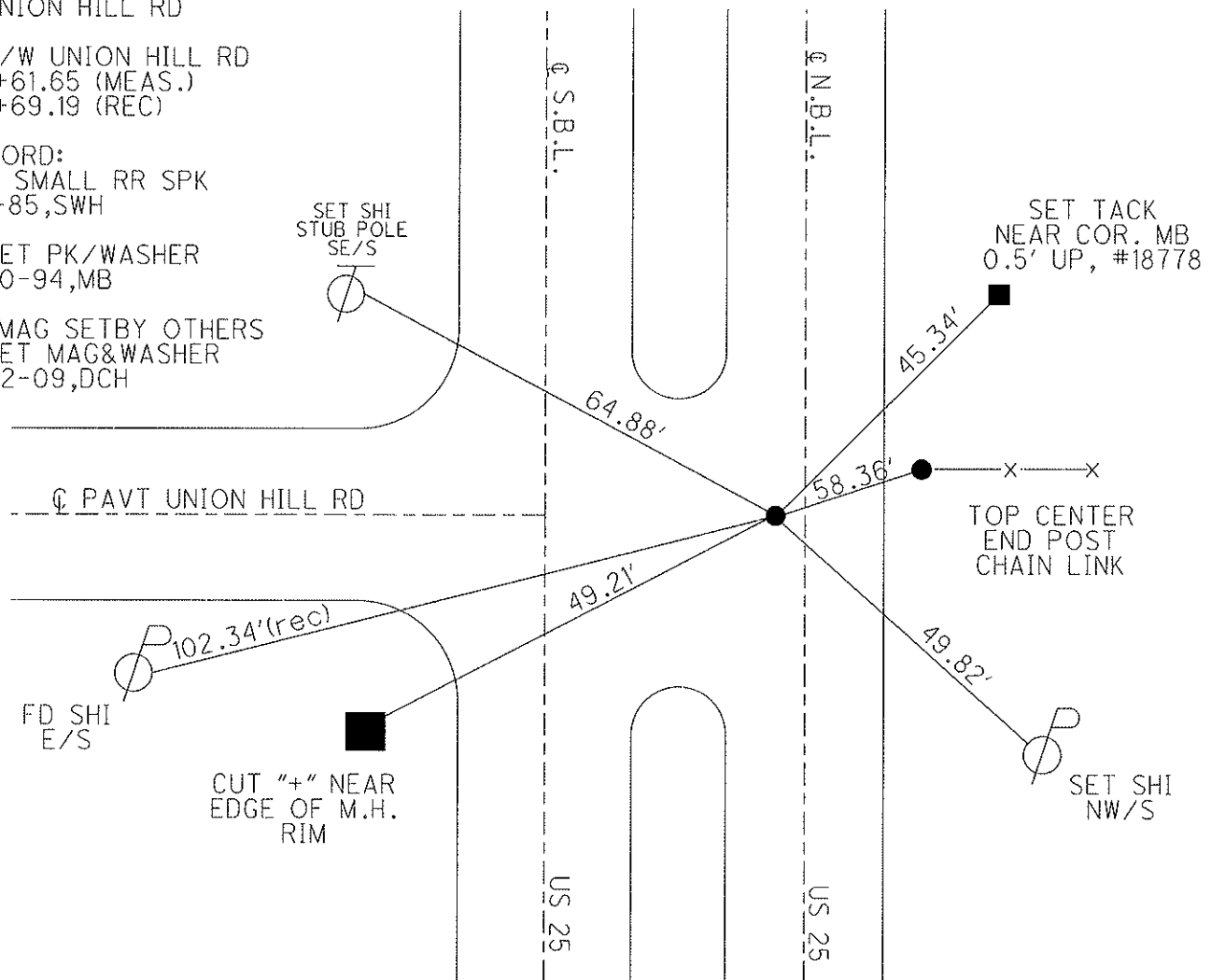
RECORD: FR BRASS MON
@ SURFACE ON
☉ UNION HILL RD

☉ R/W UNION HILL RD
147+61.65 (MEAS.)
147+69.19 (REC)

RECORD:
SET SMALL RR SPK
11-1-85, SWH

RESET PK/WASHER
9-30-94, MB

FD MAG SET BY OTHERS
RESET MAG & WASHER
11-02-09, DCH



O.D.O.T. DISTRICT 2 SURVEY OFFICE

PERSONNEL _____

REFERENCE NO. 35

SHEET 6 OF 12

NOTES BARNHISEL

H.C. CORDES

DATE 8-1-94

ROUTE U.S. 25

R.C. HERMILLER

WEATHER CLEAR

COUNTY WOOD

VAN DUSEN

TEMP. +75°

TOWNSHIP PLAIN

SECTION 1

T 5 N R 10 E

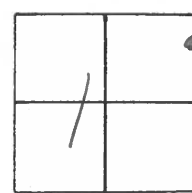
TYPE MONUMENT Sm. RR. Spk

ON SURFACE - ~~BELOW~~ YES

LEFT- & PAV'T. - ~~RIGHT~~ 3.8 N.B.L.

16.2 TO RT EDGE PAVEMENT

S.L.M. 708+88 ON E of UNION Hill Rd



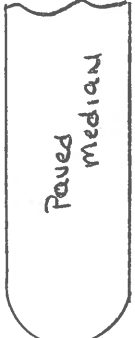
RECORD: Fd BRASS MON.
@ SURFACE ON E UNION Hill Rd

E R/W UNION Hill Rd
147+61.65 (meas.)
147+69.19 (Rec.)

Fd Shi
STAB POLE
SEIS



U.S. 25



Paved
median

U.S. 25

RECORD:
SET SMALL RR Spk
11-1-85 S.W.H.

RESET PK/WASHER
9-30-94
MB

SET TRACK
IN M.B.
#18778



E PAVT UNION Hill Rd

102.34 - (Rec)

48.91

49.96

61.93

45.05

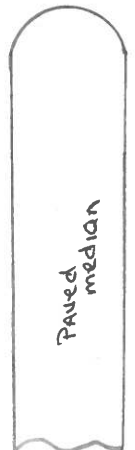


Fd Shi
EIS



Cut "+" NEAR
Edge of M.H.
Rim

E S.B.L. PAVT



Paved
median

E N.B.L. PAVT



SET Shi
NWIS

Q.D.O.T. DISTRICT 2 SURVEY OFFICE

SHEET _____ OF _____

County Wood S.R. 25

Date 9-4-85

Township PLAIN

Weather P. CLEAR

Section 1

Temp. 85°

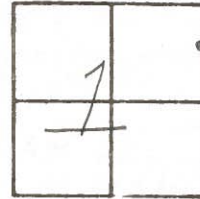
TSN, R/OE

Personnel Hoffman

BARNHISEL H.C.

Flournoy R.C.

#35

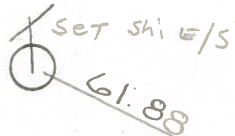


Fd BRASS MON @ SURFACE
5.6' LT. of & PAUT N.B.L.
7.9' TO & MEDIUM
ON & PAUT UNION HILL Rd.

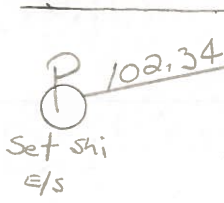
SLM 709+01 ±

Set SMALL R.R. SPK
11-1-85 SWP

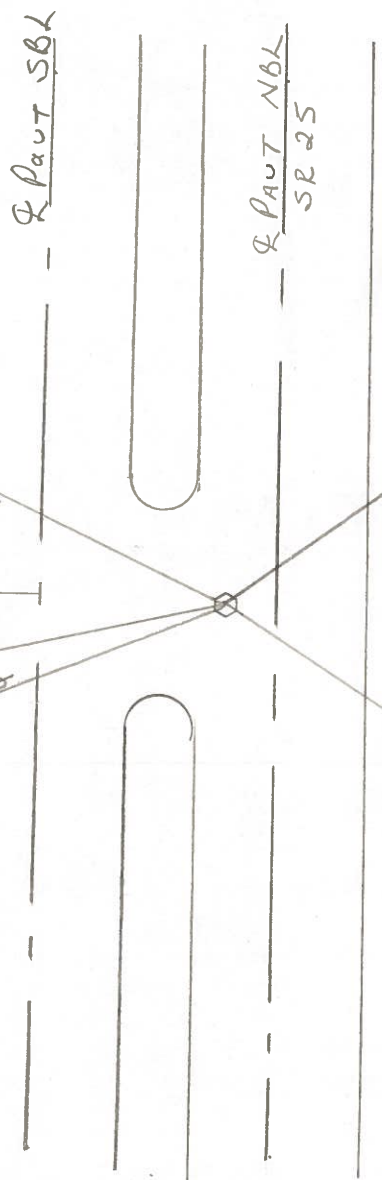
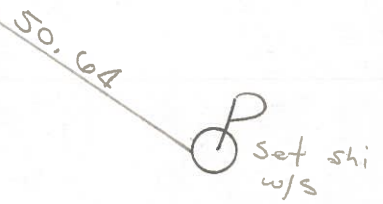
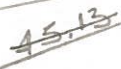
Record:
& R/W UNION HILL Rd.
147+61.65 (MEAS)
+69.19 (Rec)



& PAUT UNION HILL Rd.



cut "4"
TOP CURB
18' FROM
SOUTH END
CURB IS
REMOVED



ODOT DISTRICT 2 SURVEY OFFICE

SHEET _____ OF _____

County WOOD ^{U.S.} ~~S.R.~~ 25

Date 7-8-71

Township PLAIN

Weather CLEAR

Section 1

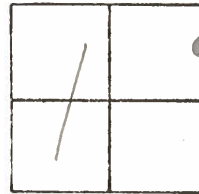
Temp. 86°

TSN, R_E

Personnel BURNSIDE

SMITH

BOWERS



#35

± R/W - UNION HILL RD.

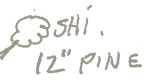
BRASS MON.
STA. 147+61.65 (MEAS.)
+69.19 (REC.)



61.93'

26.82'

79.92'



UNION HILL ROAD

37.38'

50.66'



4\"/>

U.S.

25

PERSONNEL TITLE PERSONNEL TITLE

COUNTY Wood

DATE 3-23-60

Sworden & Crew

S. R. U.S. #25

WEATHER

SEC.

TEMP.

DESCRIPTION

All-Mobora Mon. Raised & Greased

JOB NO.

LEFT

CENTER LINE

RIGHT

<p>Sta. 131 + 74.66 (mea.) + 81.54 (rec.) W 1/4 post sec. 6 Center twp. Iron pin <u>BRASS Mon.</u></p>	<p>#259</p>	<p>(Simonds rd)</p>	<p>Shiner in P. Pole S.S.W. 63.6 Shiner in hickory S.E. 41.64 Shiner in 10" Ash N.E. 44.5 Shiner in T.P. S.W. 65.4 "X" Conc. Med. strip N.W. 29.2 "X" " " " S.W. 28.1</p>
<p>Sta. 133 + 39.82 (mea.) + 46.70 (rec.) E. 1/4 post sec. 1 Plain twp.</p>	<p>#260</p>	<p>Did Not Find</p>	<p>Pin suppose to be gone</p>
<p>Sta. 147 + 61.65 (mea.) + 69.19 (rec.) E P/W (Union hill Rd.) <u>BRASS Mon.</u></p>	<p>#261</p>		<p>"X" Conc. Med. strip N.W. ^{.86'} 26.90 S.W. to T.P. 109.50 W.N.W. to T.P. 61.83 S.E. to P.P. 50.72-36.48 "X" Conc. Med. strip S.W. 37.42 _{.40}</p>
<p>Sta. 160 + 83.77 (mea.) + 91.68 (rec.) N.W. cor. sec. 6 center twp. Iron Pin $\Delta = 0^\circ - 08' Lt.$ <u>BRASS Mon.</u></p>	<p>#262</p>	<p>(Sugar Ridge Rd.)</p>	<p>"X" Conc. Med. strip S.W. 31.18 Shiner in 12" ^{Elm} maple N.E. 44.27 37.92 Shiner in maple W.N.W. 97.63 Shiner in maple W.S.W. 77.07 Shiner in walnut E.S.E. 56.57 Shiner in P. Pole S.E. 52.5 "X" in conc. Med. strip N.W. 41.41</p>
<p>Sta. 186 + 40.25 E. 1/4 post N. sec. 36 Plain twp. Cor. Stone P.I. $\Delta = 0^\circ - 12' Rt.$ <u>BRASS Mon.</u></p>	<p>#263</p>	<p>Cross Creek Rd.</p>	<p>gone Shiner in N. side 12" walnut S.E. 36.1 ✓ Shiner in S. side 16" Apple N.E. 72.1 ✓ X in N. end N.E. Wingwall E.S.E. 28.1 ✓ Shiner in 14" Ash N.E. 61.1 ✓ Shiner in 10" Walnut E. 27.4 N.E. cor. conc. cor. post S.W. 74.2 Shiner in P. Pole N.E. 74.9 "X" Top Curb S.E. 21.05 "X" Top Curb N.E. 54.6</p>