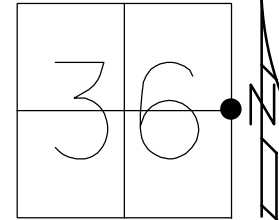


O.D.O.T. DISTRICT 2 SURVEY OFFICE (USE ONLY)

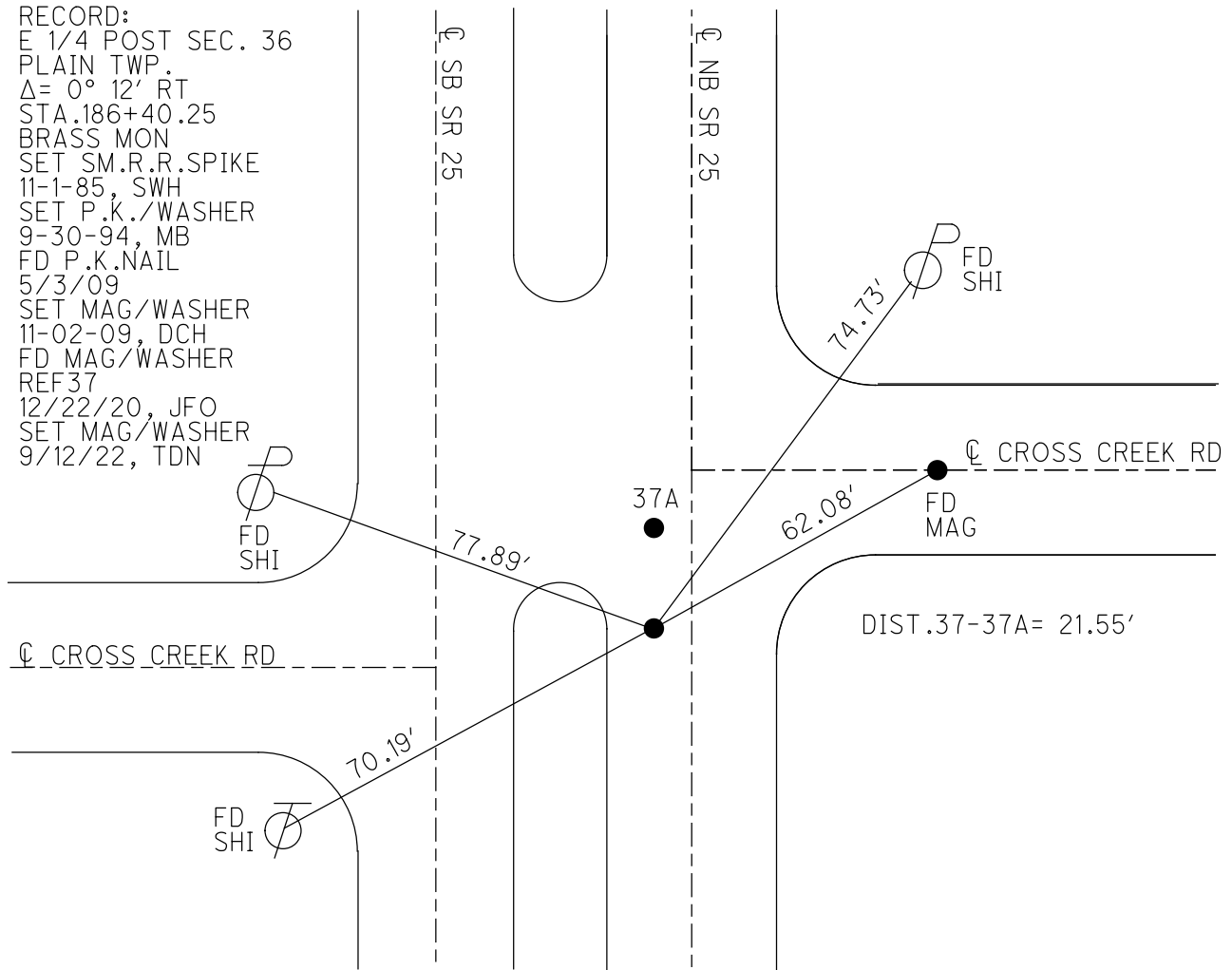
PERSONNEL _____ REFERENCE NO. 37 SHEET 11 OF 19
 NOTES WHITAKER DATE 5/25/22 ROUTE SR 25
 H.C. NIESE WEATHER CLOUDY COUNTY WOOD
 R.C. WHITAKER TEMP. 65° TOWNSHIP PLAIN
 DWG BY RHOADES PID 110037 SECTION 36
 T 5 N R 10 E

TYPE MONUMENT MAG/WASHER
 ON SURFACE - ~~BELOW~~ ON
 OFFSET C PAVEMENT 3.8' NB C LT : ~~RT~~
- TO - EDGE PAVEMENT
 STATION: 759+96.12



HORZ.DATUM: NAD83 2011 GEOID: NAVD88 2018
 GRID: NORTHING: 646974.198 EASTING: 1652939.021

RECORD:
 E 1/4 POST SEC. 36
 PLAIN TWP.
 $\Delta = 0^\circ 12' \text{ RT}$
 STA. 186+40.25
 BRASS MON
 SET SM.R.R.SPIKE
 11-1-85, SWH
 SET P.K./WASHER
 9-30-94, MB
 FD P.K.NAIL
 5/3/09
 SET MAG/WASHER
 11-02-09, DCH
 FD MAG/WASHER
 REF37
 12/22/20, JFO
 SET MAG/WASHER
 9/12/22, TDN



O.D.O.T. DISTRICT 2 SURVEY OFFICE

PERSONNEL

REFERENCE NO. 37

SHEET 10 OF 18

NOTES HOMAN

DATE 5-3-09

ROUTE US 25

H.C. ROUSOS

WEATHER CLEAR

COUNTY WOOD

R.C. HOMAN

TEMP. 70°

TOWNSHIP PLAIN, CENTER
MIDDLETON

SECTION 6

T 5 N R 10 E

TYPE MONUMENT PK NAIL

ON SURFACE - ~~BELOW~~ YES

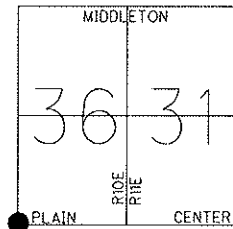
LEFT - Q PAV'T - ~~RIGHT~~ 3.8' N.B.L.

7.1' TO LT EDGE PAVEMENT

S.L.M. 748+67

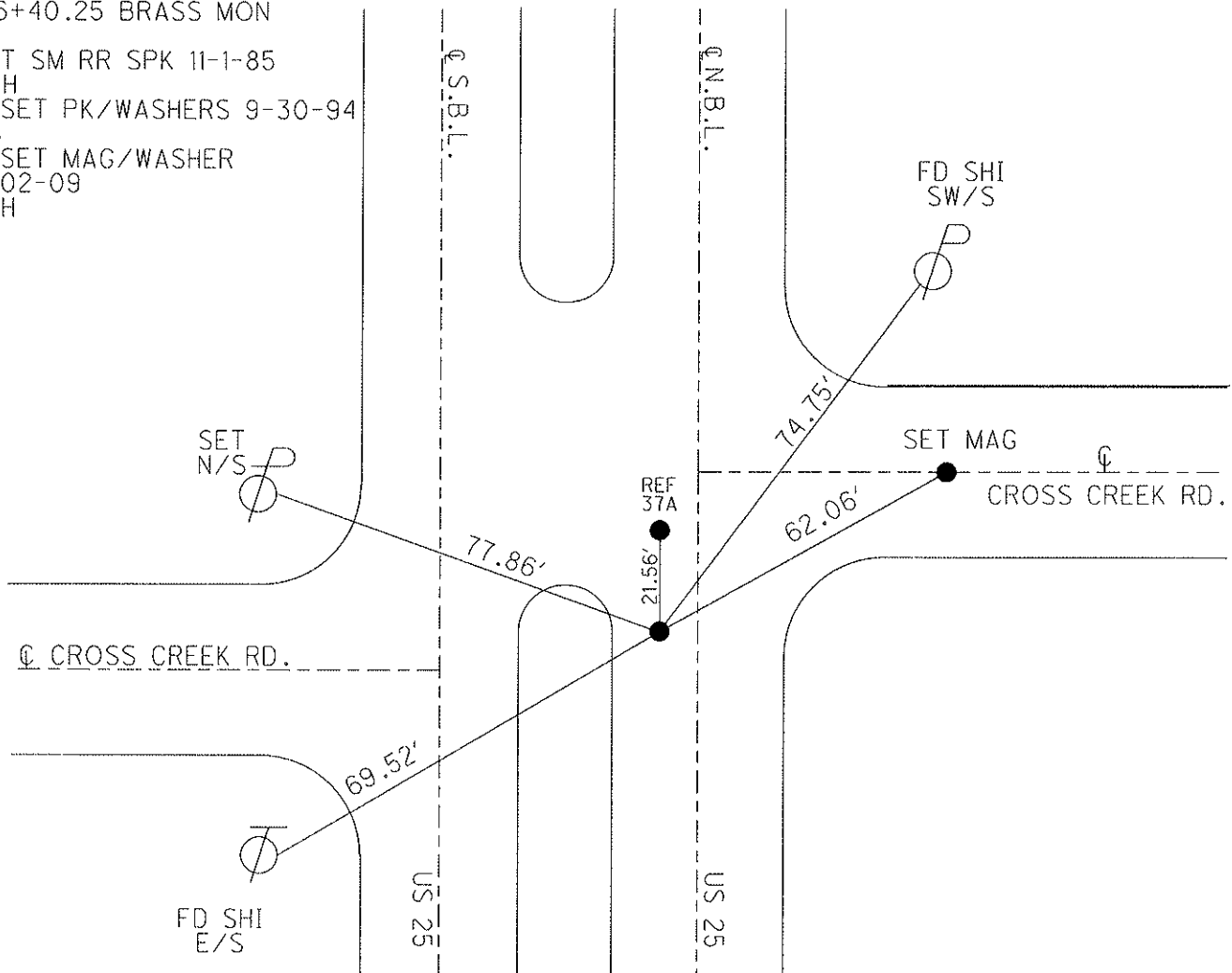
GPS Northing: 646974.279

Easting: 1652938.851



RECORD: E 1/4 POST SEC. 36
PLAIN TWP. Δ=0° 12' RT
186+40.25 BRASS MON

SET SM RR SPK 11-1-85
SWH
RESET PK/WASHERS 9-30-94
MB
RESET MAG/WASHER
11-02-09
DCH



O.D.O.T. DISTRICT 2 SURVEY OFFICE

PERSONNEL

REFERENCE NO. 37

SHEET 8 OF 12

NOTES VAN DUSEN

H.C. BARNHISEL III

DATE 8-1-94

ROUTE U.S. 25

R.C. HERMIKER

WEATHER CLEAR

COUNTY WOOD

SLOVAK

TEMP. +75°

TOWNSHIP PLAIN, CENTER, MIDDLETON

SECTION

T.5 N. R. 11 E

TYPE MONUMENT Sm. RR Spk's

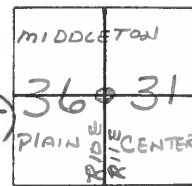
ON SURFACE - ~~BELOW~~ yes yes

LEFT- & PAU'T. - ~~RIGHT~~ 3.8 NBL 3.8

^{BOTH PK'S} 7.1 TO LT EDGE PAVEMENT (Pt. "B" 4' N. OF & WEST)

S.L.M. 748+67

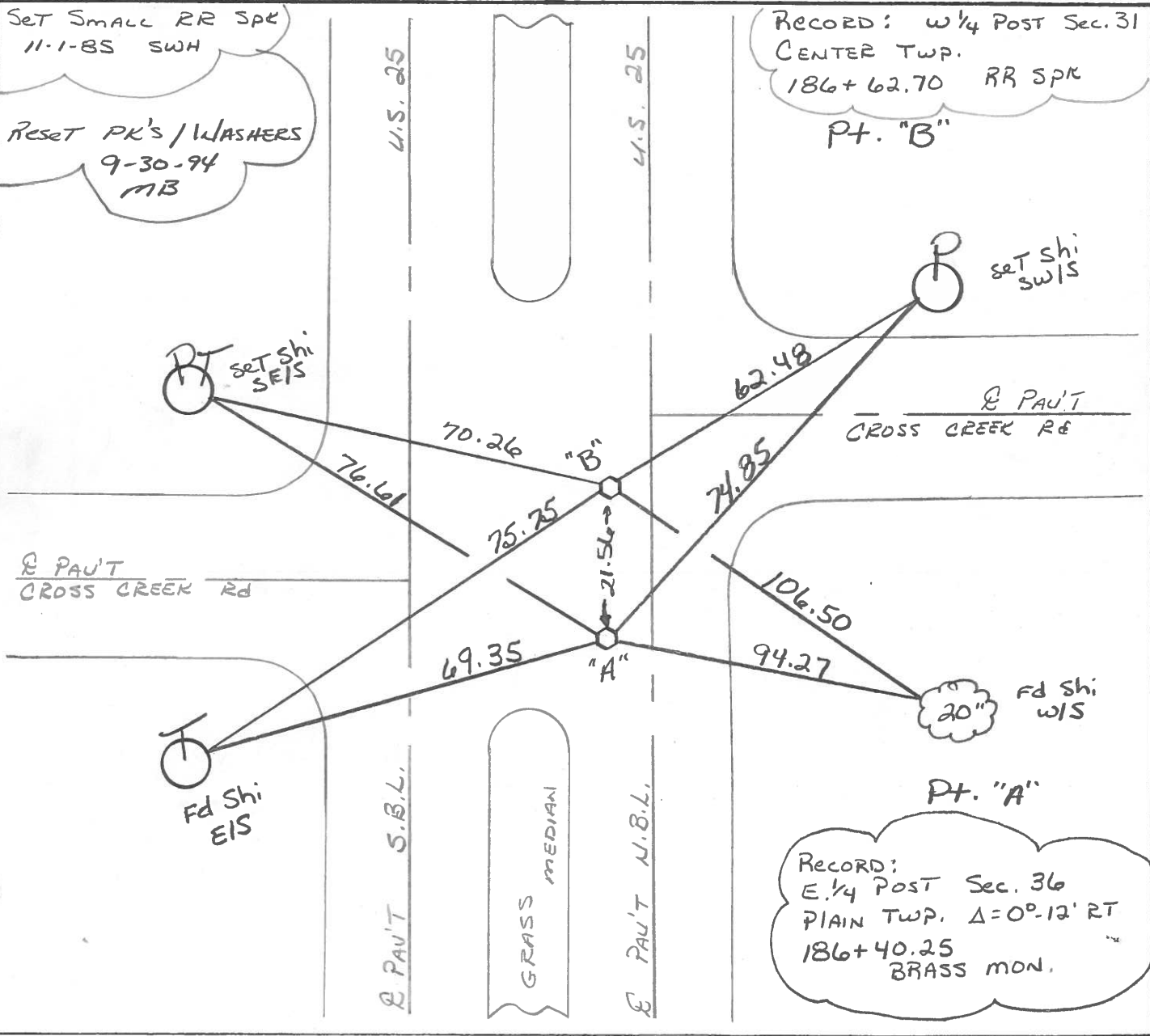
748+89



Set Small RR Spk
11-1-85 SWH

Reset PK's / Washers
9-30-94
MB

Record: W 1/4 Post Sec. 31
Center Twp.
186+62.70 RR Spk
Pt. "B"



Record:
E 1/4 Post Sec. 36
PLAIN TWP. Δ=0°-12' RT
186+40.25
BRASS MON.

QD.O.T. DISTRICT 2 SURVEY OFFICE

SHEET _____ OF _____

County Wood S.R. 25

Date 9-4-85

Township PLAIN - CENTER - MIDDLETON

Weather P. CLEAR

Section 36 - 31

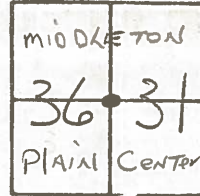
Temp. 85°

T&N, R/OE

Personnel Hoffman

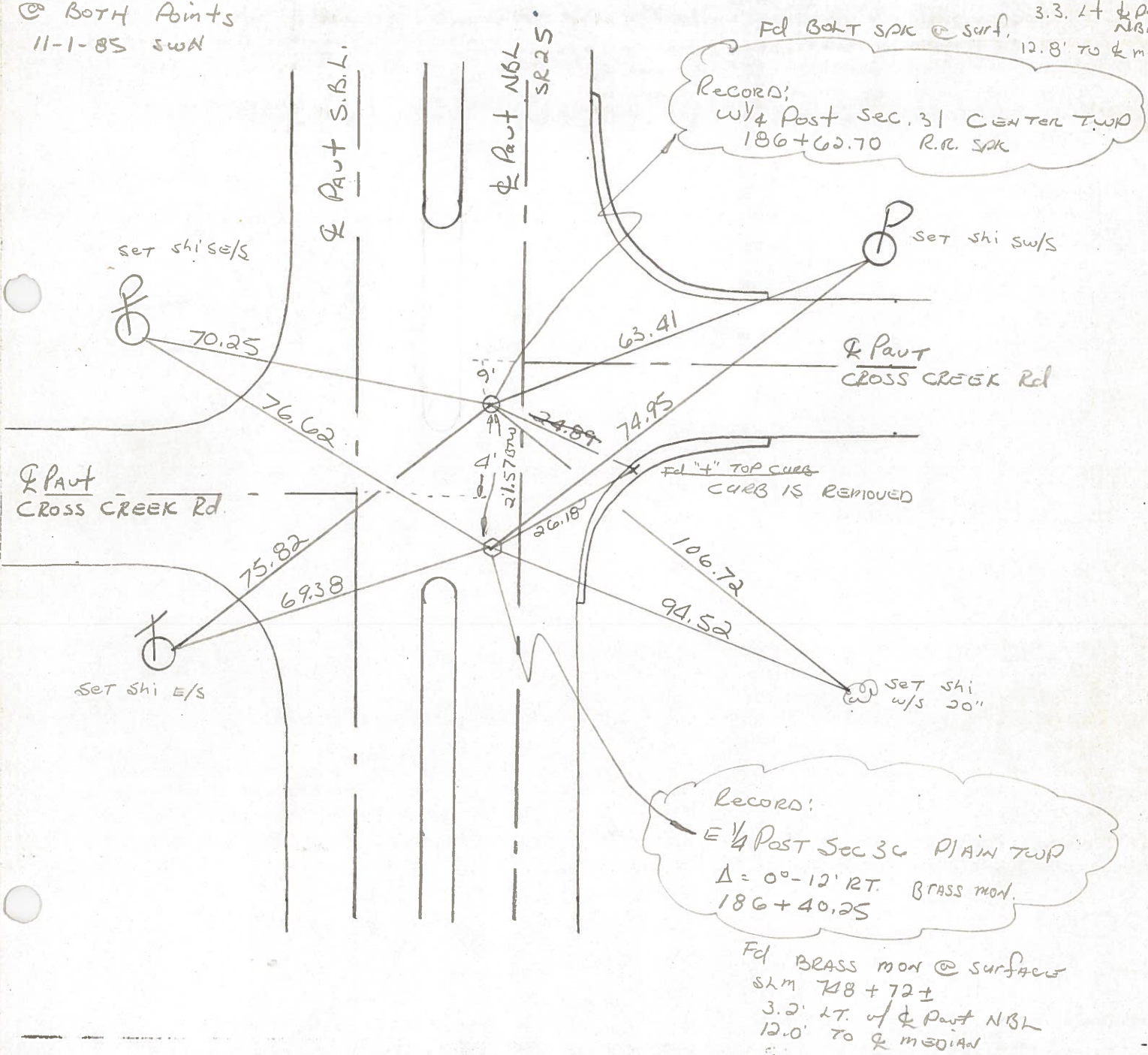
BARNHISEL H.C.

Flournoy R.C.



#37

Set small RR SPK
@ BOTH Points
11-1-85 SWN



Records:
w/4 Post Sec. 31 CENTER TWP
186+62.70 R.R. SPK

Records:
E 1/4 Post Sec 36 PLAIN TWP
Δ = 0°-12' RT. BRASS MON.
186+40.25

Fd BRASS MON @ surface
SLM 718+72±
3.2' LT. of Q PAUT NBL
12.0' TO Q MEDIAN

OD.O.T. DISTRICT 2 SURVEY OFFICE

SHEET _____ OF _____

County WOOD ^{U.S.} ~~S.R.~~ 25

Date 7-9-11

Township PLAIN - CENTER

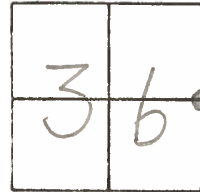
Weather CLOUDY

Section _____

Temp. 80°

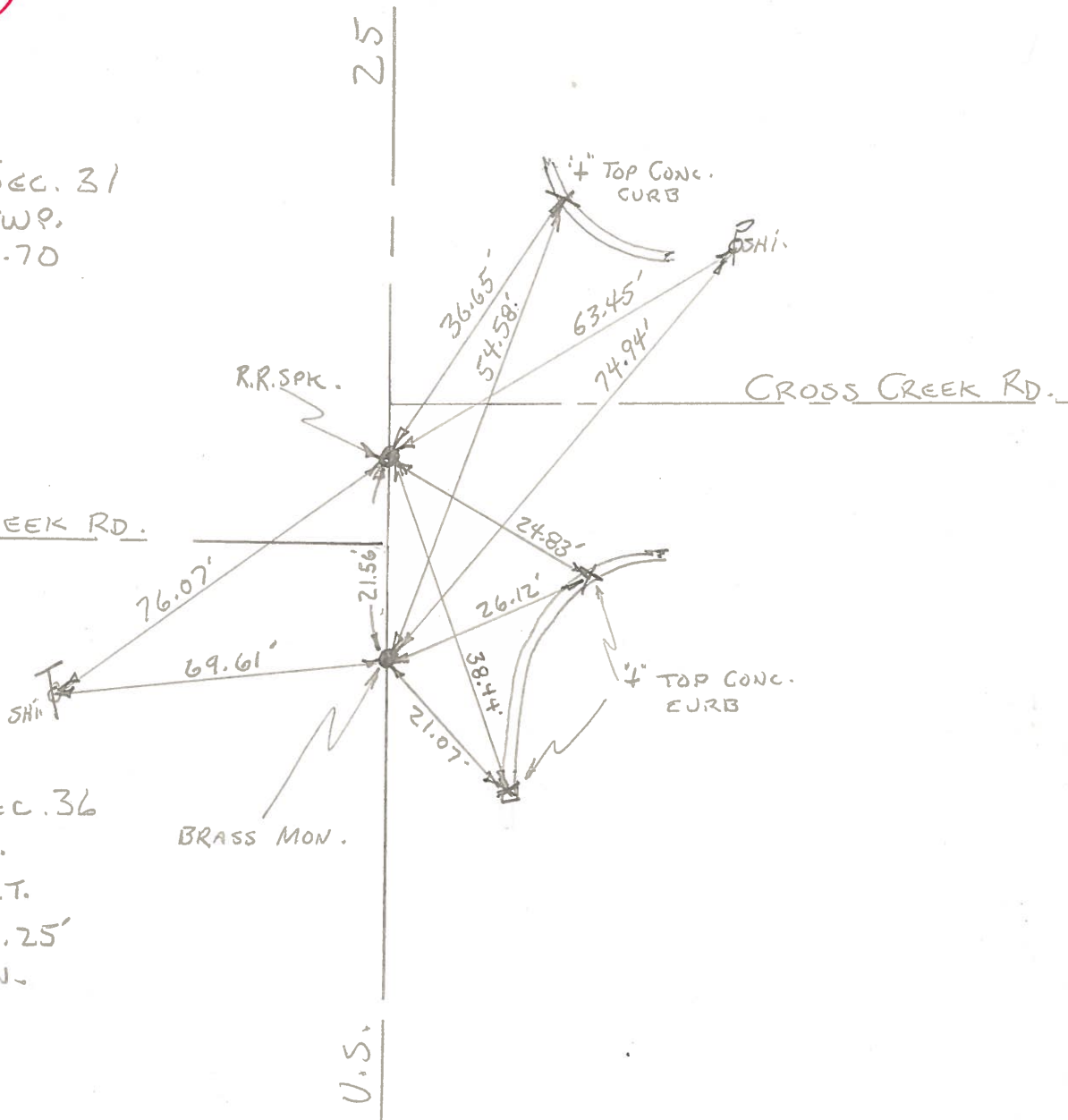
T5N, R10E

Personnel BURNSIDE



#37

W 1/4 Post Sec. 31
CENTER TWP.
STA. 186+62.70
R.R. SPKE



E. 1/4 Post Sec. 36
PLAIN TWP.
A = 0°12' RT.
STA. 186+40.25'
BRASS MON.

PERSONNEL	TITLE	PERSONNEL	TITLE	COUNTY	DATE
Sworden & Crew				Wood	3-23-60
				S. R. U.S. #25	WEATHER
				SEC.	TEMP.
DESCRIPTION	LEFT	CENTER LINE	RIGHT	JOB NO.	

Sta. 131+74.66 (mea) + 81.54 (Rec.) W 1/4 post sec. 6 Center twp. Iron pin <u>Brass Mon</u>	#259	(Simonds Rd)	Shiner in P. Pole S.S.W. 63.0 Shiner in hickory S.E. 41.64-41.7 Shiner in 10" Ash N.E. 44.5 Shiner in T.P. S.W. 65.4 "X" Conc. Med. strip N.W. 29.2 "X" ✓ ✓ ✓ S.W. 28.1
Sta. 133+39.82 (mea) + 46.70 (Rec.) E. 1/4 post sec. 1 Plain twp.	#260	Did Not Find	Pin suppose to be gone
Sta. 147+61.65 (mea) + 69.19 (Rec.) E. & R/W (Union hill Rd.) <u>BRASS Mon.</u>	#261		"X" Conc. Med. strip N.W. 26.90 ^{.86'} S.W. to T.P. 109.50 W.N.W. to T.P. 61.83 S.E. to P.P. 50.72-36-43 "X" Conc. Med. strip S.W. 37.42 ^{.40}
Sta. 160+83.77 (mea) + 91.68 (rec.) N.W. cor. sec. 6 center twp. Iron Pin Δ = 0°-08' Lt. (Sugar Ridge Rd.) <u>BRASS Mon.</u>	#262		"X" Conc. Med. strip S.W. 31.18 ^{44.27} Shiner in 12" ^{Elm} maple N.E. 37.92 Shiner in maple W.N.W. 97.63 Shiner in maple W.S.W. 77.07 Shiner in walnut E.S.E. 56.5 Shiner in P. Pole S.E. 52.5 "X" in conc. Med. strip N.W. 41.4
Sta. 186+40.25 E. 1/4 post N. sec. 36 Plain twp. Cor. Stone P.I. Δ = 0°-12' Rt. <u>BRASS Mon.</u> Cross Creek Rd.	#263		gone Shiner in N. side 12" walnut S.E. 36.0 ✓ Shiner in S. side 16" Apple N.E. 72.1 ✓ X in N. end N.E. wing wall E.S.E. 28.0 ✓ Shiner in 14" Ash N.E. 61.1 ✓ Shiner in 10" Walnut E. 27.4 N.E. cor. conc. cor. post S.W. 74.2 Shiner in P. Pole N.E. 74.9 "X" Top Curb S.E. 21.0 "X" Top Curb N.E. 54.6