

O.D.O.T. DISTRICT 2 SURVEY OFFICE (USE ONLY)

PERSONNEL

REFERENCE NO. 39

SHEET 15 OF 19

NOTES AUBLE

DATE 5/24/22

ROUTE SR 25

H.C. NIESE

WEATHER CLEAR

COUNTY WOOD

R.C. WHITAKER

TEMP. 55°

TOWNSHIP MIDDLETON

DWG BY RHOADES PID 110037

SECTION 30

T 6 N R 10 E

TYPE MONUMENT BRASS MON.

~~ON SURFACE~~ - BELOW 5"

OFFSET \varnothing PAVEMENT 8.2' LT : ~~RT~~

2.4' TO LT EDGE PAVEMENT

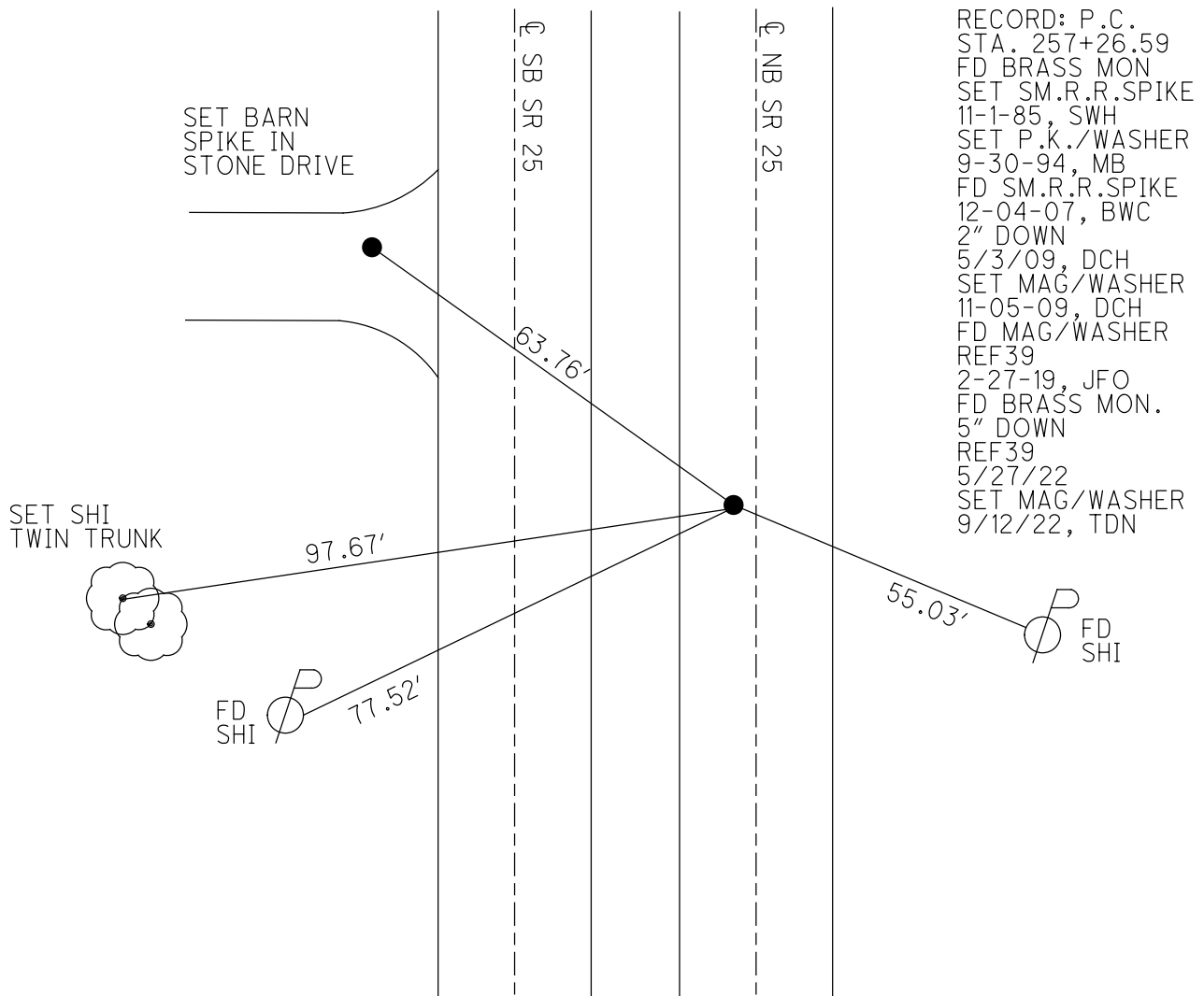
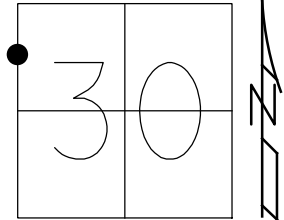
STATION: 830+80.54

HORZ.DATUM: NAD83 2011

GEOID: NAVD88 2018

GRID: NORTHING: 654057.408

EASTING: 1653002.424



O.D.O.T. DISTRICT 2 SURVEY OFFICE (USE ONLY)

PERSONNEL

REFERENCE NO. 39

SHEET 15 OF 19

NOTES HOMAN

DATE 5/3/09

ROUTE SR 25

H.C. ROUSOS

WEATHER CLEAR

COUNTY WOOD

R.C. HOMAN

TEMP. 75°

TOWNSHIP MIDDLETON

DWG BY GARRETT PID 95722

SECTION 30

T 6 N R 10 E

TYPE MONUMENT SM.R.R.SPIKE

~~ON SURFACE~~ - BELOW 2"

OFFSET \odot PAVEMENT 8.2' LT : ~~RT~~

2.4' TO LT EDGE PAVEMENT

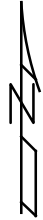
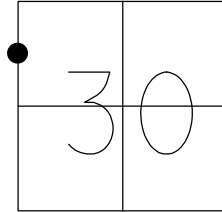
STATION: 830+80.54

HORZ.DATUM: NAD83 (2011)

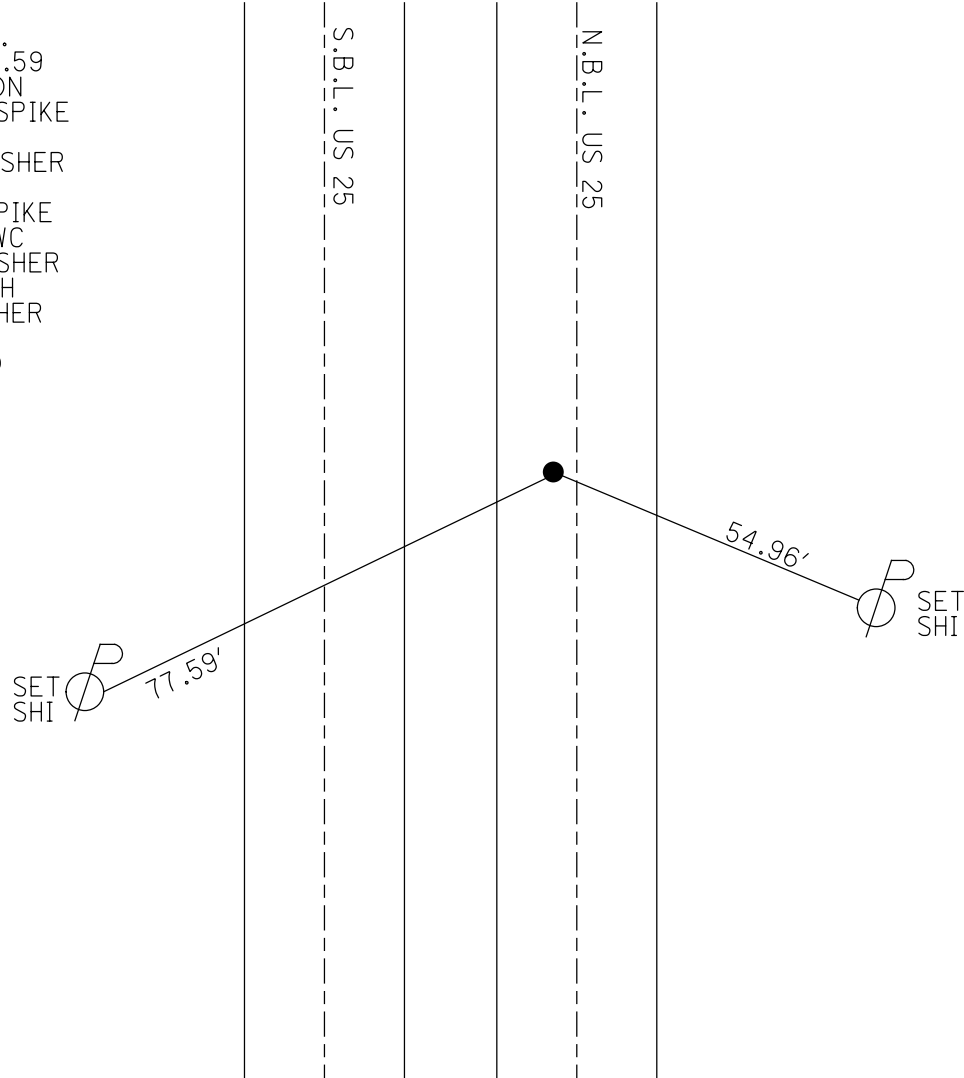
GEOID: 2012A

GRID: NORTHING: 654058.331

EASTING: 1653002.560



RECORD: P.C.
 STA. 257+26.59
 FD BRASS MON
 SET SM.R.R.SPIKE
 11-1-85, SWH
 SET P.K./WASHER
 9-30-94, MB
 FD SM.R.R.SPIKE
 12-04-07, BWC
 SET MAG/WASHER
 11-05-09, DCH
 FD MAG/WASHER
 REF39
 2-27-19, JFO



O.D.O.T. DISTRICT 2 SURVEY OFFICE

PERSONNEL

REFERENCE NO. 39

SHEET 14 OF 18

NOTES HOMAN

DATE 5-3-09

ROUTE US 25

H.C. ROUSOS

WEATHER CLEAR

COUNTY WOOD

R.C. HOMAN

TEMP. 75°

TOWNSHIP MIDDLETON

SECTION 30

T 6 N R 10 E

TYPE MONUMENT SM RR SPK

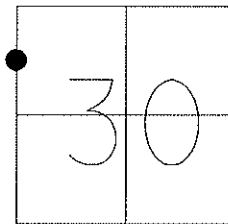
ON SURFACE - ~~BELOW~~ 2" DOWN

LEFT - Q PAV'T - ~~RIGHT~~ 8.2' N.B.L.

2.4' TO LT EDGE PAVEMENT

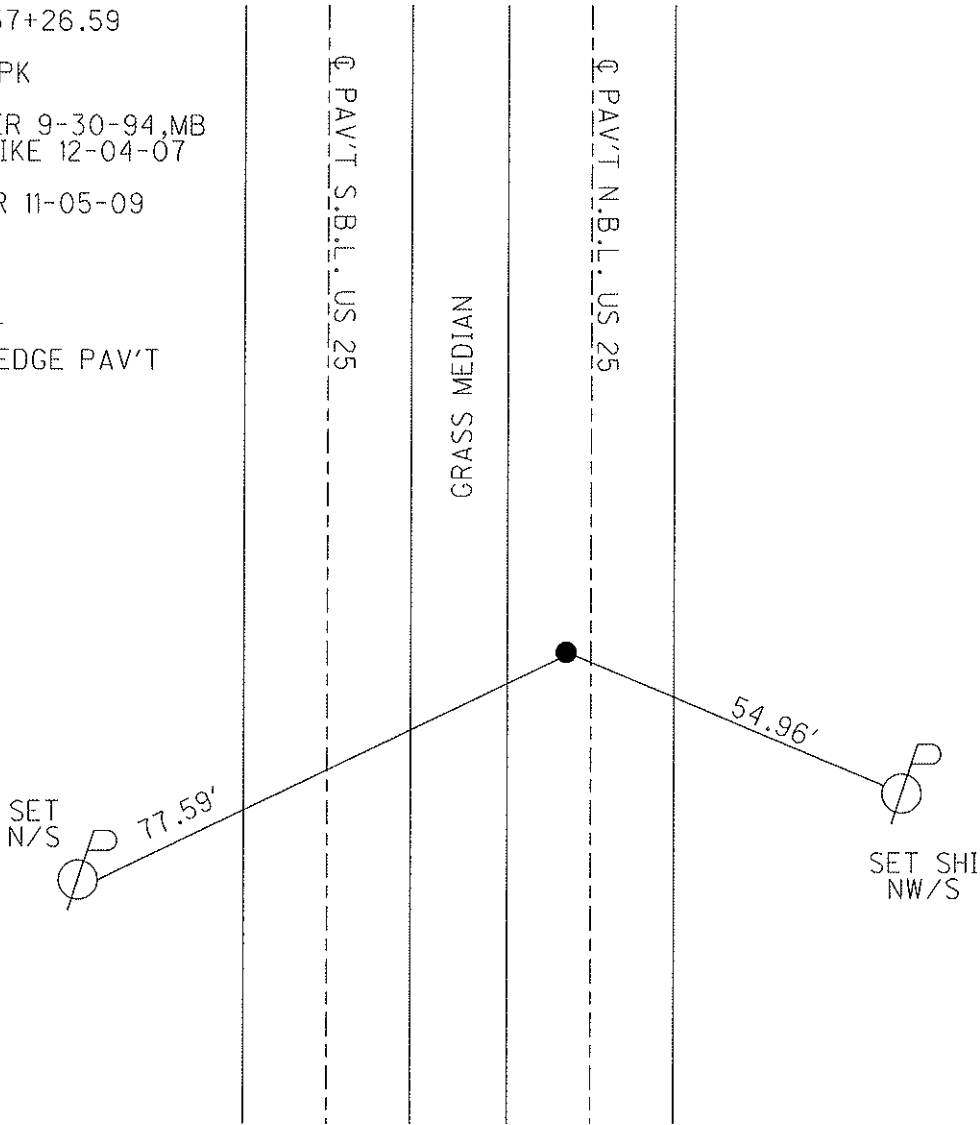
S.L.M. 819+67

GPS Northing: 654057.430 Easting: 1653002.401



RECORD: P.C. 257+26.59
 BRASS MON.
 SET SMALL RR SPK
 11-1-85 SWH
 RESET PK/WASHER 9-30-94, MB
 FD. SM. R.R. SPIKE 12-04-07
 BWC
 SET MAG/WASHER 11-05-09
 DCH

RECORD: NOTE:
 PI 260+32.25
 DELTA=9°-09' LT
 10' EAST OF W. EDGE PAV'T
 DID NOT FIND



O.D.O.T. DISTRICT 2 SURVEY OFFICE

PERSONNEL

REFERENCE NO. 39

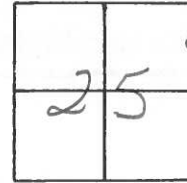
SHEET 10 OF 12

NOTES VAN DUSEN
 H.C. BARNISEL M
 R.C. HEB MILLER
SLOVAK

DATE 8-1-94
 WEATHER CLEAR
 TEMP. +75°

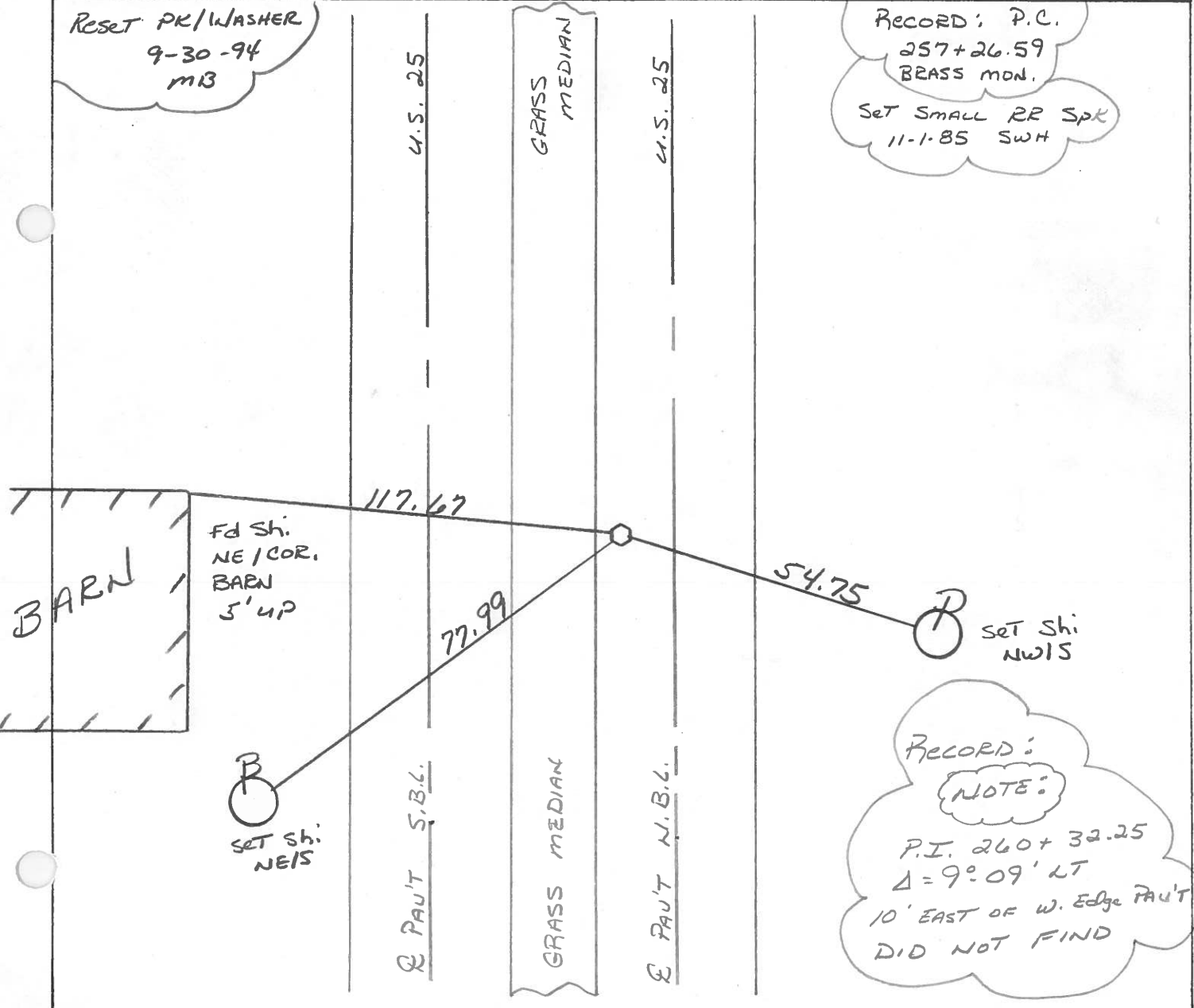
ROUTE U.S. 25
 COUNTY WOOD
 TOWNSHIP MIDDLETON
 SECTION 25
T 6 N R 10 E

TYPE MONUMENT Sm. RR. Spk
 ON SURFACE - ~~BELOW~~ yes
 LEFT- & PAU'T. - ~~RIGHT~~ 8.2 N.B.L.
2.4 TO LT EDGE PAVEMENT
 S.L.M. 819+67



Reset PK/WASHER
 9-30-94
 MB

RECORD: P.C.
 257+26.59
 BRASS MON.
 Set SMALL RR Spk
 11-1-85 SWH



RECORD:
 NOTE:
 P.I. 260+32.25
 $\Delta = 9^{\circ} 09' LT$
 10' EAST OF W. EDGE FAU'T
 DID NOT FIND

County Wood S.R. 25

Township MIDDLETON

Section 25

T6N, R10E

Personnel Hoffman

BARNHISEL H.C.

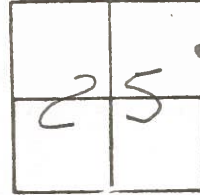
Flournoy R.C.

39

Date 9-4-85

Weather P. Cloudy

Temp. 90°

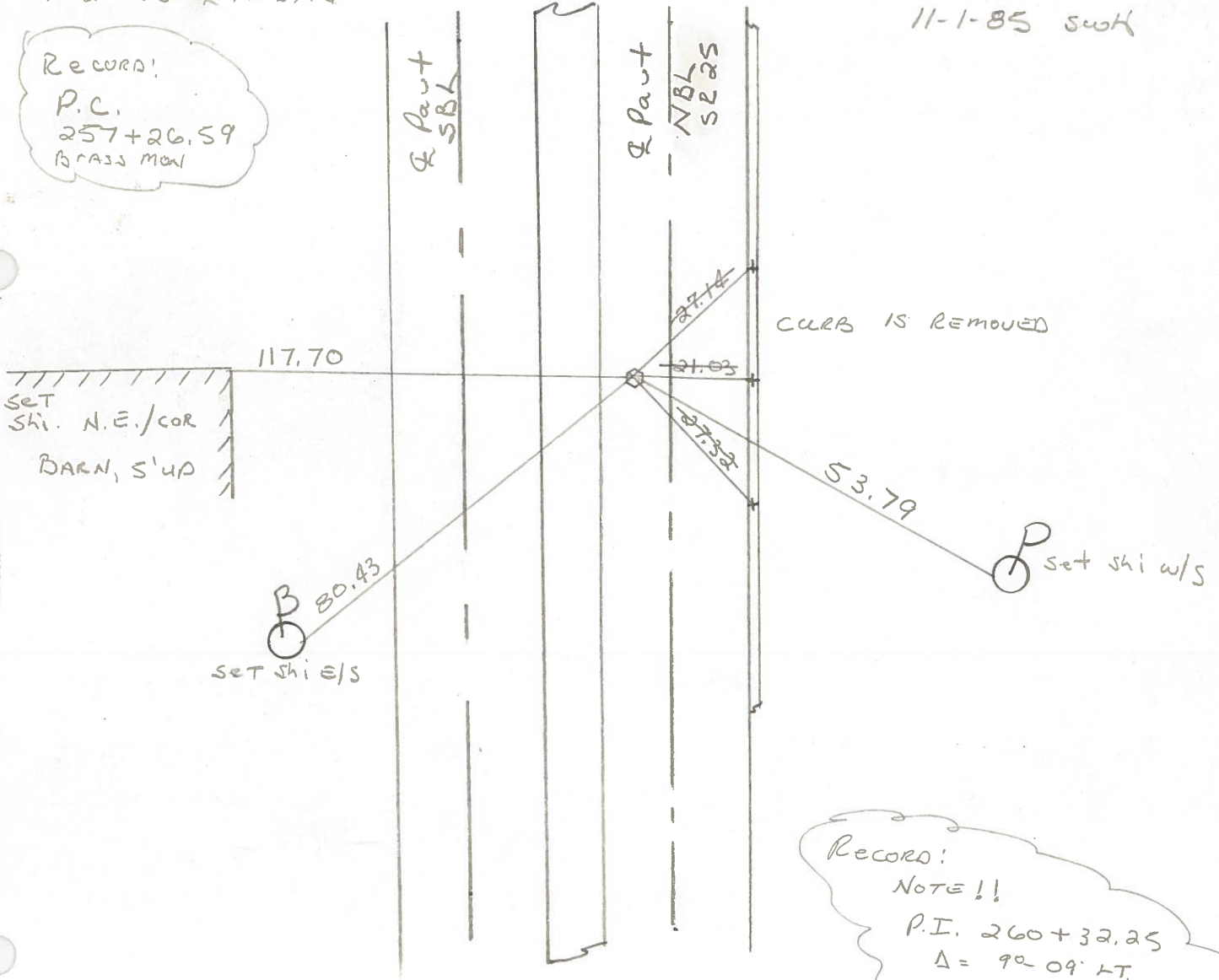


Fd. BRASS MON @ surface
8.0' Lt. of R Pawt NBL
10.2' TO & MEDIUM

SLM 819+57

Set SMALL RR SPK
11-1-85 suh

RECORD!
P.C.
257+26.59
BRASS MON



RECORD!
NOTE!!
P.I. 260+32.25
Δ = 92° 09' LT.
10' E. of W. EDGE Pawt
"DID NOT FIND"

ODOT. DISTRICT 2 SURVEY OFFICE

SHEET _____ OF _____

County WOOD ^{U.S.} S.R. 25

Date 7-12-71

Township MIDDLETON

Weather CLEAR

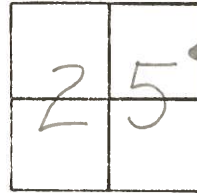
Section 25

Temp. 72°

T6N, R10E

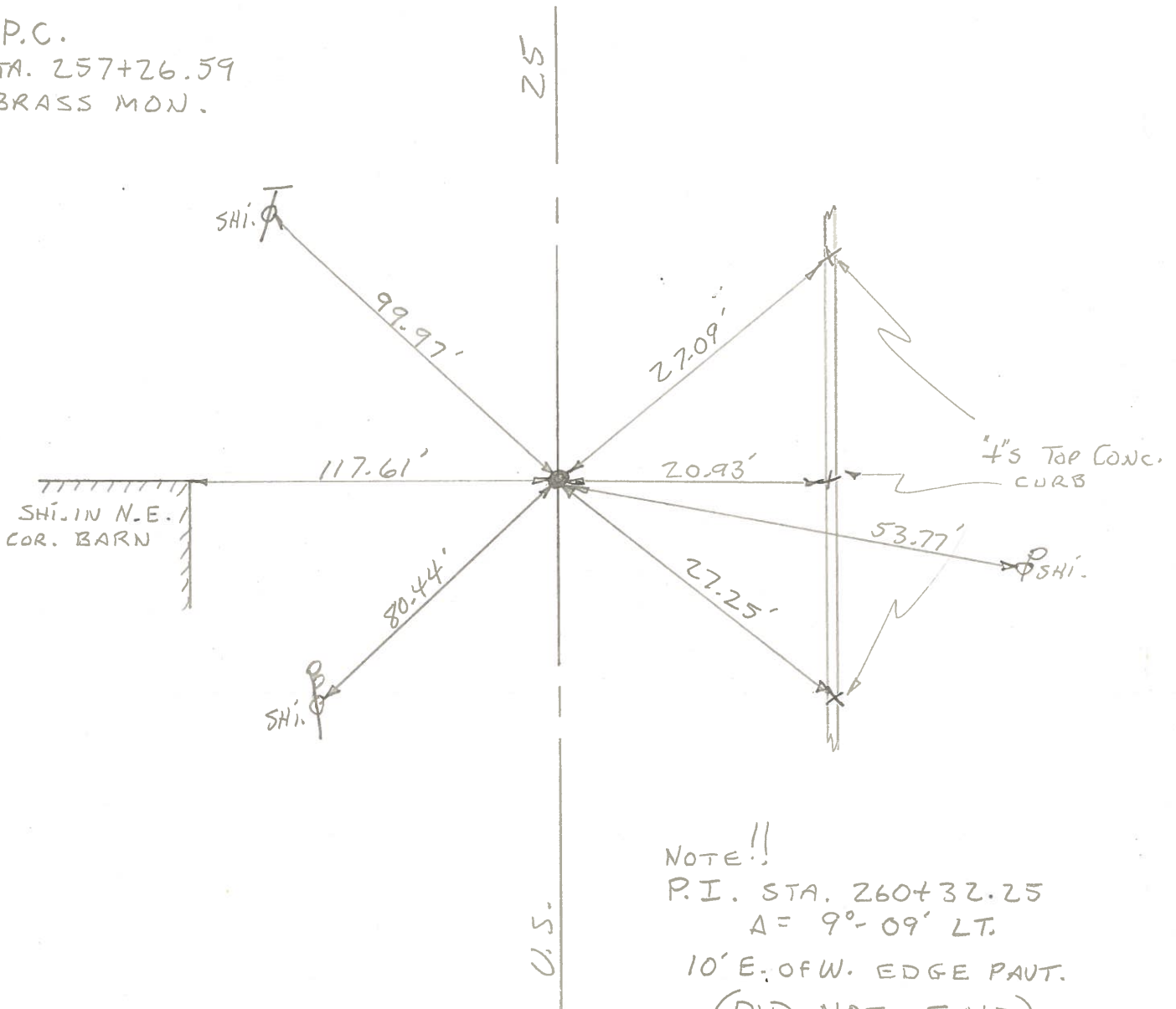
Personnel BURNSIDE

BOWERS



#39

P.C.
STA. 257+26.59
BRASS MON.



NOTE!!
P.I. STA. 260+32.25
A = 9°-09' LT.
10' E. OF W. EDGE PAVT.
(DID NOT FIND)

PERSONNEL	TITLE	PERSONNEL	TITLE
		COUNTY	Wood
		DATE	3-23-60
		S. R.	U.S. #25
		WEATHER	Silvester 9 -63
		SEC.	
		TEMP.	
DESCRIPTION	Mobora Monis Raised & Greased		JOB NO.
	LEFT	CENTER LINE	RIGHT

Sta. 186+62.70 W 1/4 post sec. 31 Center Twp. Stone - R.R. Spike Fd. P.K. 21.56' N.	Did Not Find	Shiner in 10" Walnut S.E. 40.8 Washer in 14" Ash N.E. 36.4 "X" Top Curb S.E. 38.44' "X" " " N.E. 36.64' Shiner in P. Pole E.N.E. 63.36' 47.45' south of #264 Shiner P. Pole N.E. 65.8 X in S.E. cor. of Hdwl. Lt. 65.4 N.W. cor. Hdwl. Lt. 67.4 Shiner in T.P. Sta. 213+21 Lt. 73.4 Nail in P.P. E. 32.0 Nail in T.P. Anchor pole N.E. 101.5 Nail in 20" Apple N.E. 127.3
(37-A) #264		
Sta. 212+97.95 Stone. S.E. cor. sec. 25 Middletown twp. Δ = 0°-09' Lt. BRASS Mon. Devils Hole Rd. W.		
(38) #265		
<u>(See back of Page)</u>		
Sta. 213+45.48 Stone SW. cor. sec. 30 Middletown twp. E.R. Spike No Angle. Devils Hole Rd. E. BRASS Mon.		Shiner P. Pole S.E. 68.57 N.W. cor. Hdwl. Wing Lt. 83.7 Shiner in T.P. Sta. 213+21 Lt. 72.8 N.E. cor. post metal fence Lt. 120.88 Nail in 20" Apple N.E. 86.87 Nail in T.P. Anchor P. N.E. 76.56 Nail in P.P. S.E. 44.71 Shiner T. Pole N.E. 81.77 Shiner 14" Ash N.N.E. 67.52
(38-A) #266		
E.R. Spike P.C. BRASS mon. Sta. 257+26.59		Shiner in T.P. Lt. S.W. 112.06 N.E. cor. barn Lt. 117.68 Shiner in T.P. Lt. N.W. 99.71 "X" Top Curb N.E. 27.05 "X" " " E. 20.87 "X" " " S.E. 27.27
(39) #267		