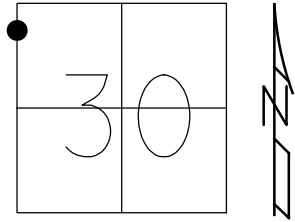


O.D.O.T. DISTRICT 2 SURVEY OFFICE (USE ONLY)

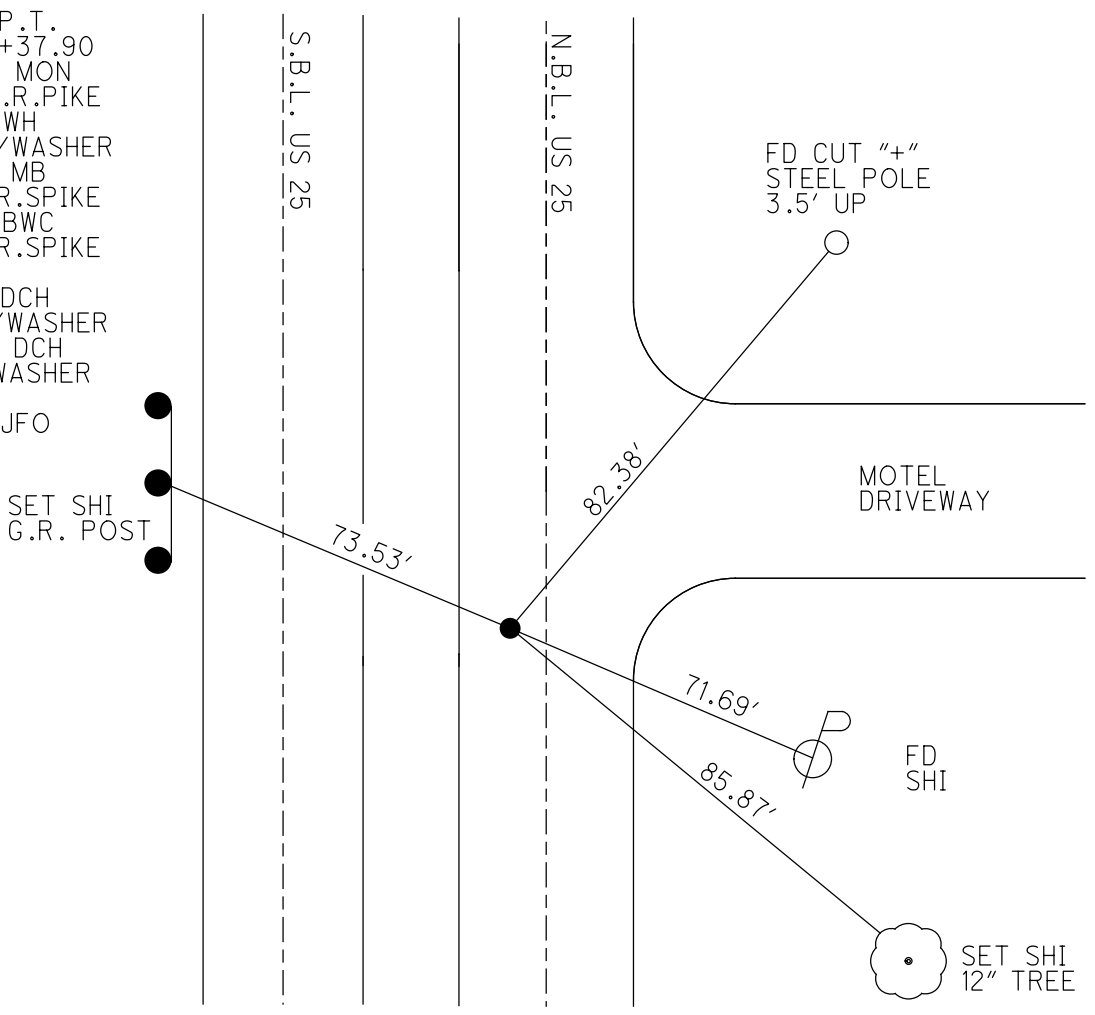
PERSONNEL \_\_\_\_\_ REFERENCE NO. 39 A SHEET 16 OF 19  
 NOTES LEU DATE 5/28/2020 ROUTE SR 25  
 H.C. O'DONNELL WEATHER CLOUDY COUNTY WOOD  
 R.C. AUBLE TEMP. 72° TOWNSHIP MIDDLETON  
RHOADES SECTION 30  
 DWG BY GARRETT PID 95722 T 6 N R 10 E

TYPE MONUMENT MAG SHANK  
 ON SURFACE - ~~BELOW~~ ON \_\_\_\_\_  
 OFFSET  $\varnothing$  PAVEMENT 1.6' LT : ~~RT~~  
9.5' TO LT EDGE PAVEMENT  
 STATION: 836+90.20



HORZ. DATUM: NAD83 (2011) GEOID: 2012A  
 GRID: NORTHING: 654664.989 EASTING: 1653056.034

RECORD: P.T.  
 STA. 263+37.90  
 FD BRASS MON  
 SET SM.R.R.PIKE  
 11-1-85, SWH  
 SET P.K./WASHER  
 9-30-94, MB  
 FD SM.R.R.SPIKE  
 12-4-07, BWC  
 FD SM.R.R.SPIKE  
 2" DOWN  
 5/3/09, DCH  
 SET MAG/WASHER  
 11-02-09, DCH  
 FD MAG/WASHER  
 REFA39  
 2-27-19, JFO



O.D.O.T. DISTRICT 2 SURVEY OFFICE

PERSONNEL

REFERENCE NO. 39 A

SHEET 15 OF 18

NOTES HOMAN

DATE 5-3-09

ROUTE US 25

H.C. ROUSOS

WEATHER CLEAR

COUNTY WOOD

R.C. HOMAN

TEMP. 75°

TOWNSHIP MIDDLETON

SECTION 30

T 6 N R 10 E

TYPE MONUMENT SM RR SPK

ON SURFACE - ~~BELOW~~ 2" DOWN

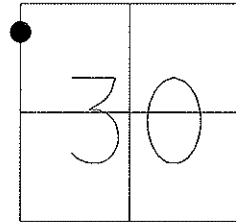
LEFT - Q PAV'T - ~~RIGHT~~ 1.6' N.B.L.

9.5' TO LT EDGE PAVEMENT

S.L.M. 825+78

GPS Northing: 654664.348

Easting: 1653055.884



RECORD: PT 263+37.90  
BRASS MON

SET SMALL RR SPK 11-1-85  
SWH  
RESET PK/WASHER  
9-30-94  
MB  
FD SM.R.R.SPIKE  
12-4-07, BWC  
RESET MAG/WASHER  
11-02-09  
DCH

FACE 2ND  
G.R. POST



Q S.B.L.

GRASS MEDIAN

Q N.B.L.

US 25

US 25

CUT "4" NEAR  
FACE OF STEEL POLE  
3.5' UP

MOTEL  
DRIVEWAY

82.33'

73.41'

71.64'

SET SHI  
W/S



O.D.O.T. DISTRICT 2 SURVEY OFFICE

PERSONNEL

REFERENCE NO. 39-A

SHEET 11 OF 12

NOTES VAN DUSEN

H.C. BARNHISEL

DATE 8-1-94

ROUTE U.S. 25

R.C. HERMILLER

WEATHER CLEAR

COUNTY WOOD

SLOVAK

TEMP. +75°

TOWNSHIP MIDDLETON

SECTION 25

T. 6 N. R. 10 E.

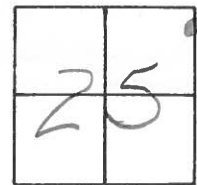
TYPE MONUMENT Sm. RR. Spk

ON SURFACE - ~~BELOW~~ yes

LEFT-~~☉~~ PAV'T. - ~~RIGHT~~ 1.6 N.B.L.

9.5 TO LT EDGE PAVEMENT

S.L.M. 825+78



RECORD: PT  
263+37.90  
BRASS MDN

SET SMALL RR Spk  
11-1-85 SWH

U.S. 25

GRASS MEDIAN

U.S. 25

RESET PK/WASHER  
9-30-94  
MB

CUT 4" NEAR  
FACE OF STEEL  
POLE 3.5' UP

DRIVE  
TO MOTEL

82.33

79.88

10" TWIN

SET Shi  
WIS

71.53



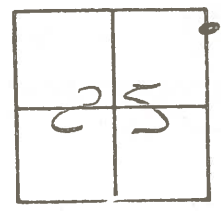
SET Shi  
WIS

E. PAV'T S.B.L.

E. PAV'T N.B.L.

County Wood S.R. 25  
 Township MIDDLETON  
 Section 25  
 T N, R E  
 Personnel Hoffman  
BARNHISEL H.C.  
Flournoy R.C.

Date 9-4-85  
 Weather P. Cloudy  
 Temp. 85°



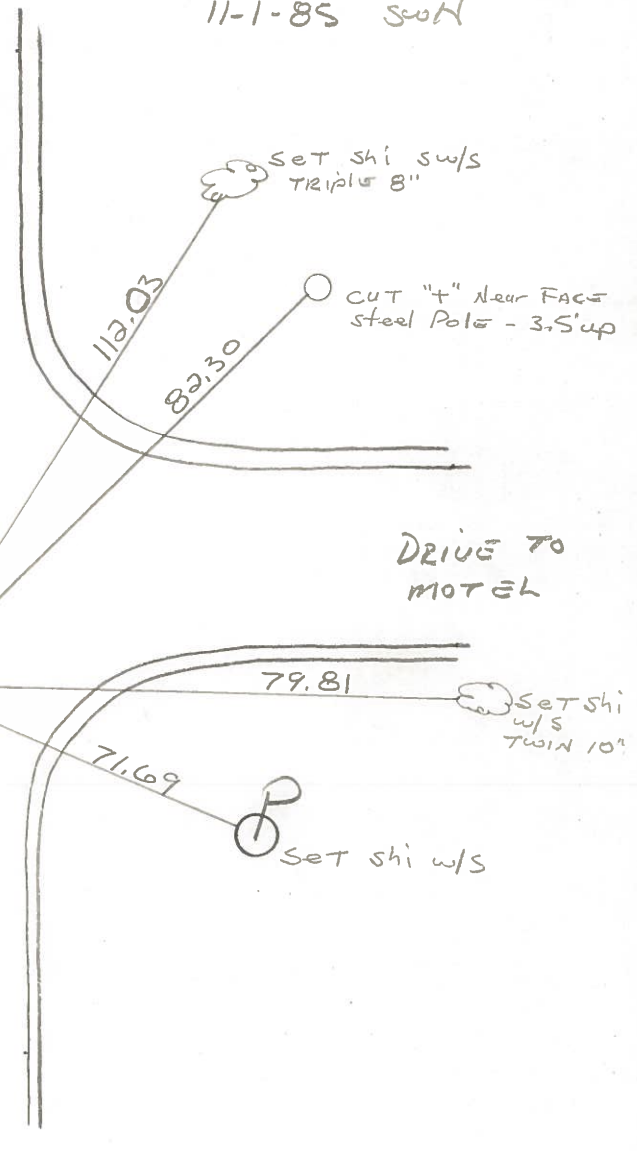
39-A

Fd BRASS MON. @ surface  
 1.0' LT. of & Part N.B.L.  
 22.7' TO MEDIAN &

SLM 725+99 ±

Set SMALL R.R. SPK  
 11-1-85 SWH

RECORD:  
 P.T. 263+37.90  
 BRASS MON.



DRIVE TO MOTEL

Ⓟ Set shi w/s

Set shi w/s TWIN 10"

Set shi w/s TRIPLET 8"

CUT "T" Near FACE steel Pole - 3.5' up

ODOT DISTRICT 2 SURVEY OFFICE

SHEET OF

County WOOD <sup>U.S.</sup> ~~S.R.~~ 25

Date 7-12-71

Township MIDDLETON

Weather CLEAR

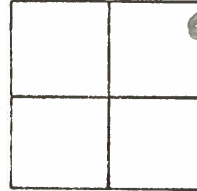
Section 25

Temp. 72°

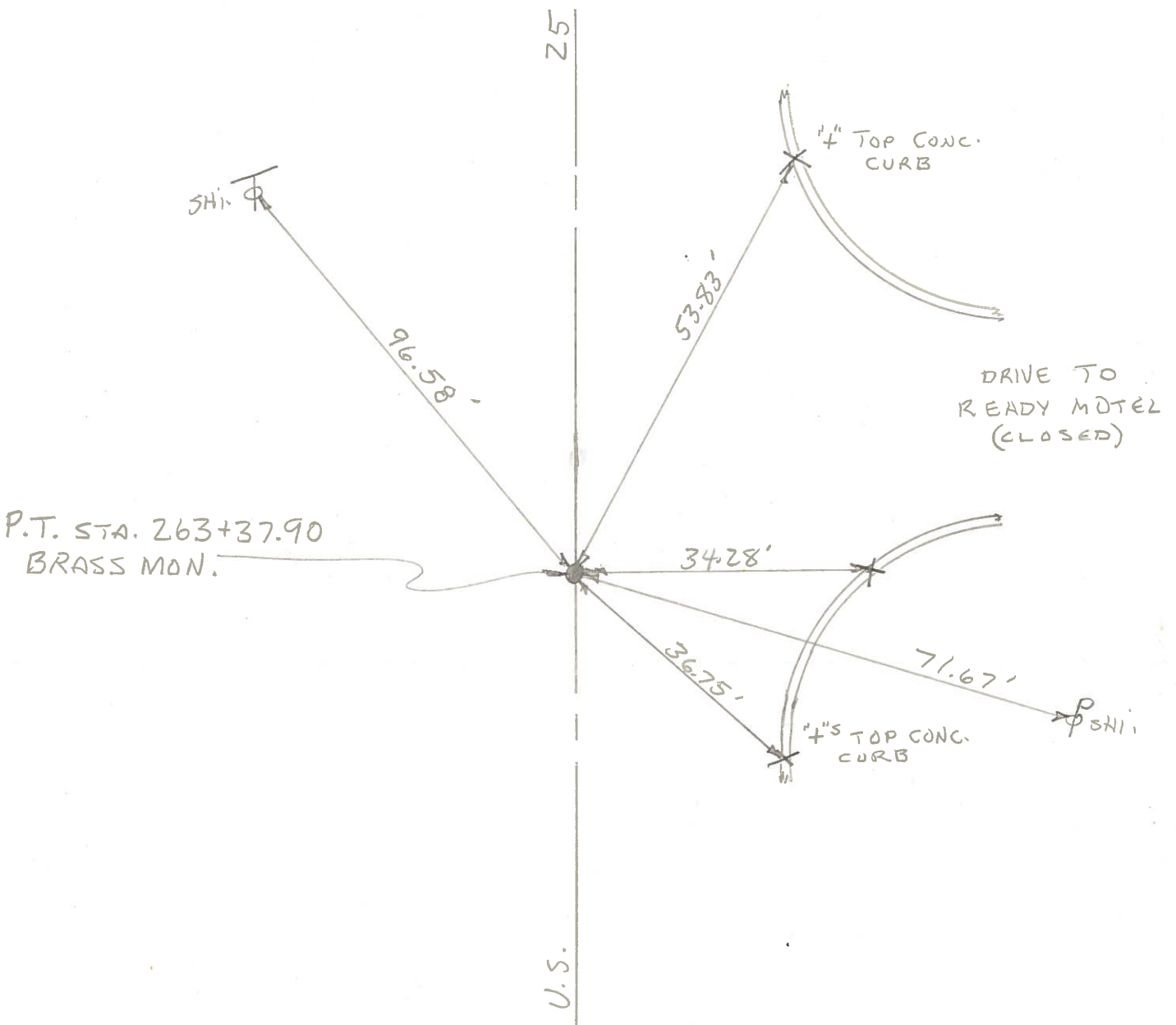
T6N, R10E

Personnel BURNSIDE

BOWERS



#39-A



PERSONNEL TITLE PERSONNEL TITLE

COUNTY \_\_\_\_\_ DATE \_\_\_\_\_

S. R. \_\_\_\_\_ WEATHER \_\_\_\_\_

SEC. \_\_\_\_\_ TEMP. \_\_\_\_\_

DESCRIPTION LEFT CENTER LINE RIGHT JOB NO.

Sta. 263 + 37.90

39-A

34.25' E. to Cross Cut in Top of Curb Rod

53.80' N.E. " " " " " " " "

36.75 S.E. " " " " " " " "