

O.D.O.T. DISTRICT 2 SURVEY OFFICE (USE ONLY)

PERSONNEL

REFERENCE NO. 42

SHEET 1 OF 19

NOTES LEU

DATE 5/28/20

ROUTE SR 25

H.C. O'DONNELL

WEATHER CLOUDY

COUNTY WOOD

R.C. AUBLE

TEMP. 73°

TOWNSHIP MIDDLETON

RHOADES

DWG BY RHOADES PID 95722

SECTION 19

T 6 N R 11 E

TYPE MONUMENT MAG/WASHER

ON SURFACE - ~~BELOW~~ ON

OFFSET CL PAVEMENT 5.6' LT : ~~RT~~

5.7' TO LT EDGE PAVEMENT

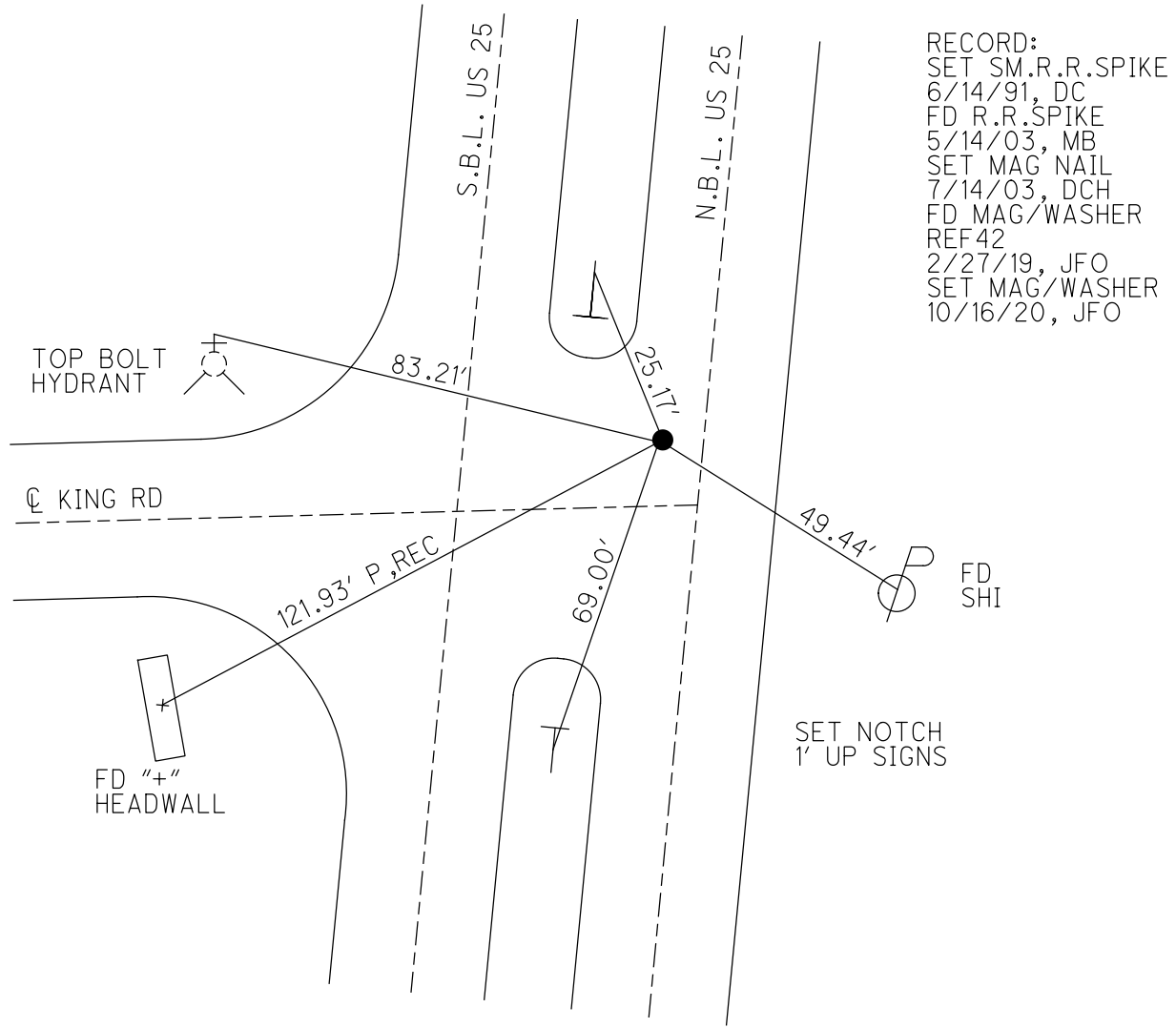
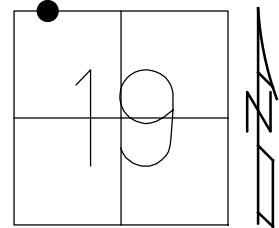
STATION: 892+78.51

HORZ. DATUM: NAD83 (2011)

GEOID: 2012A

GRID: NORTHING: 660174.902

EASTING: 1653988.789



O.D.O.T. DISTRICT 2 SURVEY OFFICE

4 of 12

PERSONNEL

REFERENCE NO. 42

SHEET 1 OF 29

NOTES BARNHISEL

DATE 5/14/03

ROUTE SR. 25

H.C. CANTERBURY

WEATHER CLEAR

COUNTY WOOD

R.C. HOMAN

TEMP. +60°

TOWNSHIP MIDDLETON

SECTION 19

T & N R L E

TYPE MONUMENT R.R. SPIKE @ SURFACE, REMOVED,

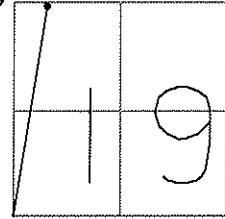
~~ON SURFACE~~ ~~BELOW~~ DUG 11" TO FIND BRASS MON.

DIDN'T FIND MON.

LEFT - ~~C~~ ~~PAVT~~ ~~RIGHT~~ 5.6'

5.7 TO LT EDGE PAVEMENT

S.L.M. 881+20



SET MAG NAIL 7-14-03 DCH

SET SM. R.R. SPK. TO SURFACE
6-14-91 D.C.



USE TOP BOLT
OF FIRE HYDRANT

☉ KING RD.

DITCH

CUT "4" TOP CTR.
CON. HEADWALL
FND.

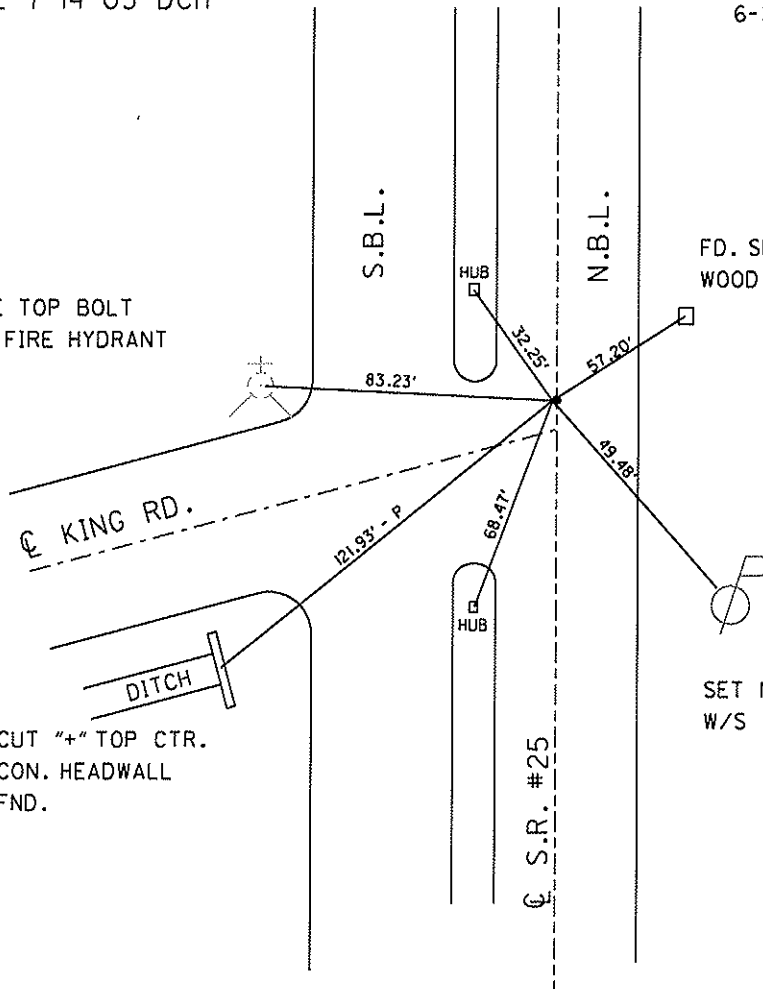
S.B.L.

N.B.L.

☉ S.R. #25

FD. SHI. IN 4"x4"
WOOD POST 4' UP

SET N & S
W/S



O.D.O.T. DISTRICT 2 SURVEY OFFICE

PERSONNEL

REFERENCE NO. 42

SHEET 1 OF 29

NOTES 1. Stone

H.C. D. Curtis

R.C. J. Householder

DATE 10 April 91

WEATHER Windy

TEMP. 37°

ROUTE SR #25

COUNTY Wood

TOWNSHIP Middletown

SECTION 19

T R

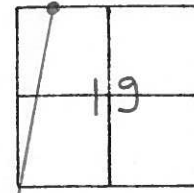
TYPE MONUMENT RR Spk.

ON SURFACE - BELOW 4" deep

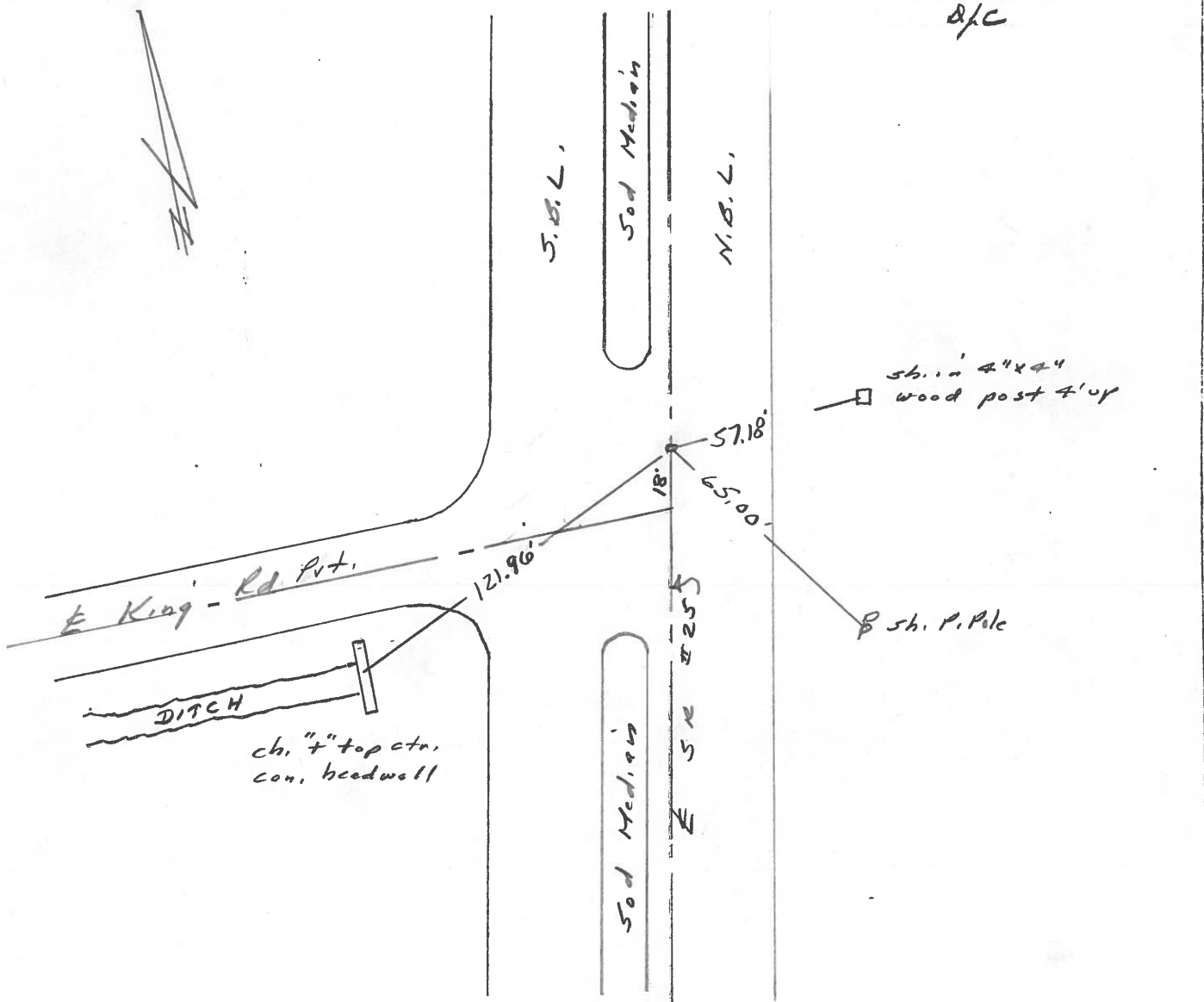
LEFT - & PAV'T. - RIGHT

TO EDGE PAVEMENT

S.L.M. 881+20



SET SM. R. R. SPK. TO SURFACE
6-14-91
B/C



County Wood S.R. 25

Date 11-19-81

Township MIDDLETON

Weather Rain

Section 19

Temp. +45°

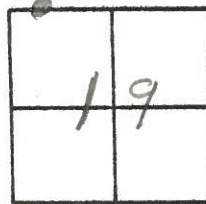
T6N, R10E

Personnel HOFFMAN

Householder

Loehrke

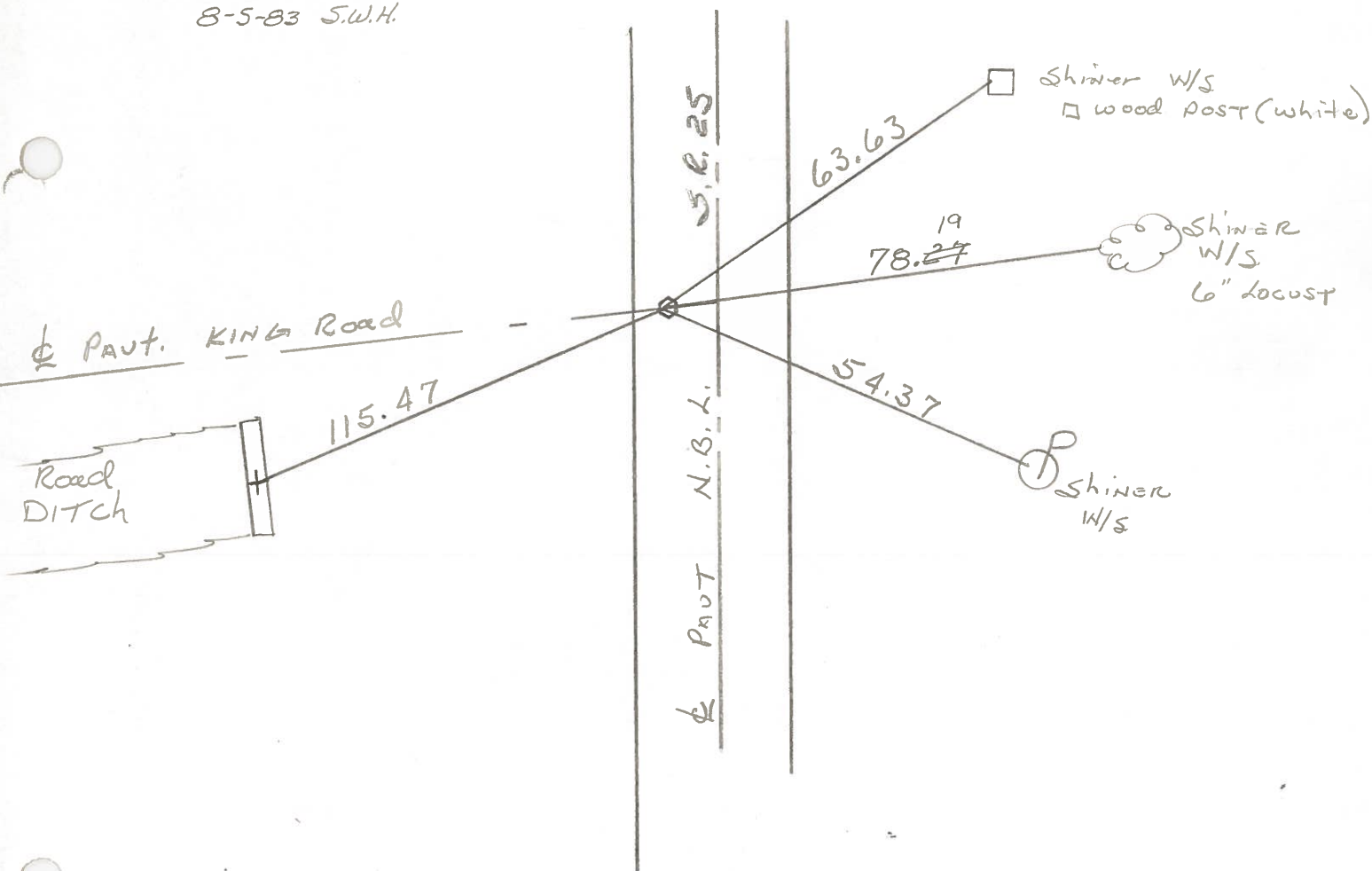
42



Fd. Brass mon, 1 1/4" Below surface
 5.2' W. of NBL & PAUT.
 Sta. 319 + 07.85 - Rec.
 No 4

Project sta ± 881 + 38

SET SMALL R.R. SPK.
 8-5-83 S.W.H.



PERSONNEL	TITLE	PERSONNEL	TITLE	COUNTY	DATE
				Wood	3-23-60
				S. R. 115 ²² 25	WEATHER
				SEC.	TEMP.
DESCRIPTION	Mobara Mon. Raised Grass			JOB NO.	
	LEFT	CENTER LINE	RIGHT		

Sta. 260+32.25 Δ = 9°-09' Lt P.I. R.E. spike 10' E. of W. edge of pavement.		DID NOT FIND	Shiner in T.P. W. 70.28 Shiner in 24" Apple limb S.W. 81.34 Nail in P.P. E. 33.78 Beat spk. in 24" Apple S.W. 82.7
Sta. 265+34.70 N.W. cor. sec. 30, Middleton Twp. R.E. spike BRASS MON. S.E. #582 East	#268	This Point 76.59 S. of Point #270	"X" cut in curb South Side S.E. 582 E. 28.2 Shiner in 15" maple E. 76.89 N.W. cor. of block bldg E.S.E. (Block up) 89.64 N.W. cor. of garage SE 98.94 Shiner P. Pole S.E. 67.80 Bottom 3rd Block of Porch COR. S.E. 83.82 1.76
Sta. 266+10.60 (+11.40) (+11.40) N.E. Cor sec. 25 Middleton Twp. R.E. spike BRASS MON. S.E. #582 West	#269	This Point 76.59 N. of Point #270	"X" cut curb N. side S.E. 582 N.E. 35.96 "X" " " " " " " " " N.N.E. 48.83 Shiner in 8" pear E. 54.20 Bolt in 12" Elm N.E. 79.85 Nail in P.P. N.W. 62.95 X-on N.W. cor top of 2-3 C.B. S.W. 97.65
Sta. 319+07.85 No. Angle Harrow tooth - Set mon.	#270		Shiner in 12" Apple E. 98.57 X-on N.W. cor Hdwl. S.W. 89.47 "X" cut curb S. side #582 S.E. 81.23 X-on S.E. cor. top #2-6 C.B. N.W. 30.92 X-on S.E. cor top #2-6 C.B. S.W. 41.17 X-on Conc. Hdwl. E. 89.50 Shiner 6" Elm N.E. 63.12 Shiner P. Pole S.E. 54.40 Shiner 1' W. of East Edge Part South line 27.4
Sta. 332+04.25 Δ = 0°-40' Lt. Set mon.	#271		N.E. to shiner in 8" poplar. 80.01 N.W. to shiner in 20" poplar 90.03 W. to shiner in Anchor post 69.54 N.N.E. shiner in 10" Elm 98.3. N.E. shiner in 14" Poplar 79.7
Sta. 332+04.25	#272		

Sta. 260+32.25
ASS Mon. P. Page
to back of page

(40-A)

(41)

(42)

(43)