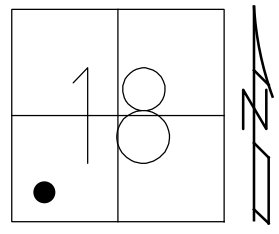


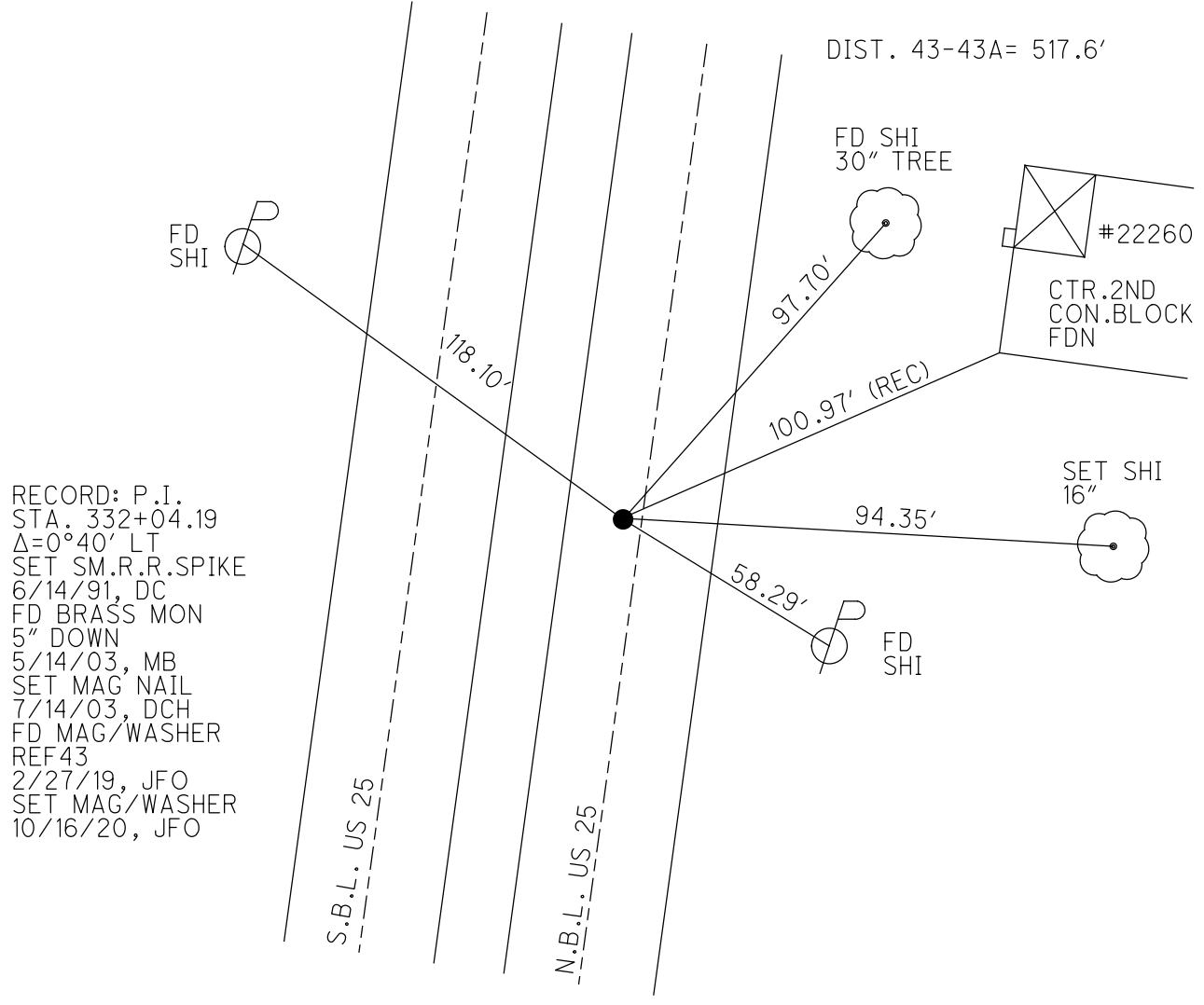
O.D.O.T. DISTRICT 2 SURVEY OFFICE (USE ONLY)

PERSONNEL \_\_\_\_\_ REFERENCE NO. 43 SHEET 2 OF 19  
 NOTES LEU DATE 5/28/20 ROUTE SR 25  
 H.C. O'DONNELL WEATHER CLOUDY COUNTY WOOD  
 R.C. AUBLE TEMP. 74° TOWNSHIP MIDDLETON  
 \_\_\_\_\_ RHOADES SECTION 18  
 DWG BY RHOADES PID 95722 T 6 N R 11 E

TYPE MONUMENT MAG/WASHER  
 ON SURFACE - ~~BELOW~~ ON  
 OFFSET Q PAVEMENT 6.4' LT : ~~R~~  
4.6' TO LT EDGE PAVEMENT  
 STATION: 905+56.03



HORZ. DATUM: NAD83 (2011) GEOID: 2012A  
 GRID: NORTHING: 661434.474 EASTING: 1654202.199



RECORD: P.I.  
 STA. 332+04.19  
 $\Delta=0^{\circ}40'$  LT  
 SET SM.R.R.SPIKE  
 6/14/91, DC  
 FD BRASS MON  
 5" DOWN  
 5/14/03, MB  
 SET MAG NAIL  
 7/14/03, DCH  
 FD MAG/WASHER  
 REF 43  
 2/27/19, JFO  
 SET MAG/WASHER  
 10/16/20, JFO

O.D.O.T. DISTRICT 2 SURVEY OFFICE

<b>PERSONNEL</b>	<b>REFERENCE NO.</b> <u>43</u>	<b>SHEET</b> <u>5 OF 12</u> <u>2 OF 29</u>
<b>NOTES</b> <u>BARNHISEL</u>	<b>DATE</b> <u>5/14/03</u>	<b>ROUTE</b> <u>S.R. #25</u>
<b>H.C.</b> <u>CANTERBURY</u>	<b>WEATHER</b> <u>CLEAR</u>	<b>COUNTY</b> <u>WOOD</u>
<b>R.C.</b> <u>RYALL</u>	<b>TEMP.</b> <u>+60°</u>	<b>TOWNSHIP</b> <u>MIDDLETON</u>
<u>HOMAN</u>		<b>SECTION</b> <u>19</u>
<u>GLASS</u>		<b>T &amp; N RILE</b>

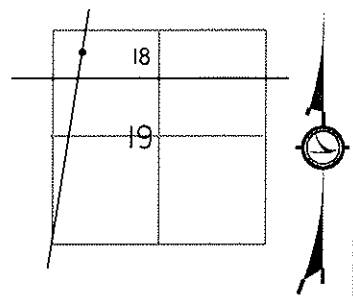
**TYPE MONUMENT** BRASS MON.

~~ON SURFACE~~ - **BELOW** 5"

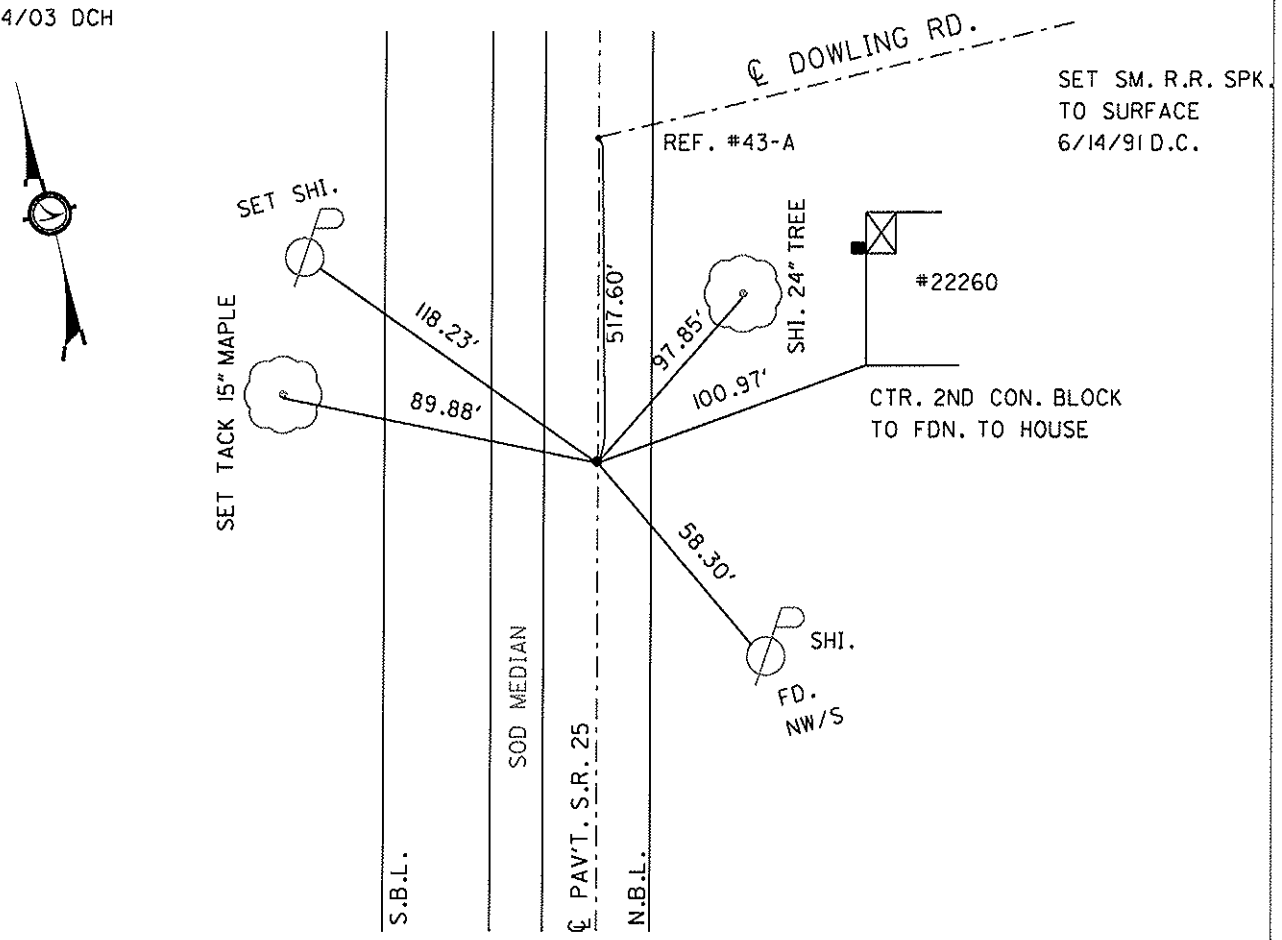
**LEFT** - ~~PAV'T~~ **RIGHT** 5.9'

4.6 **TO LT. EDGE PAVEMENT**

**S.L.M.** 893+97



SET MAG NAIL  
7/14/03 DCH



# O.D.O.T. DISTRICT 2 SURVEY OFFICE

PERSONNEL

REFERENCE NO. 43

SHEET 2 OF 29

NOTES 1. Stone

H.C. D. Curtis

R.C. J. Householder

DATE 10 April 91

WEATHER Windy

TEMP. 37°

ROUTE SR#25

COUNTY Wood

TOWNSHIP Middletown

SECTION 19

T.      R.     

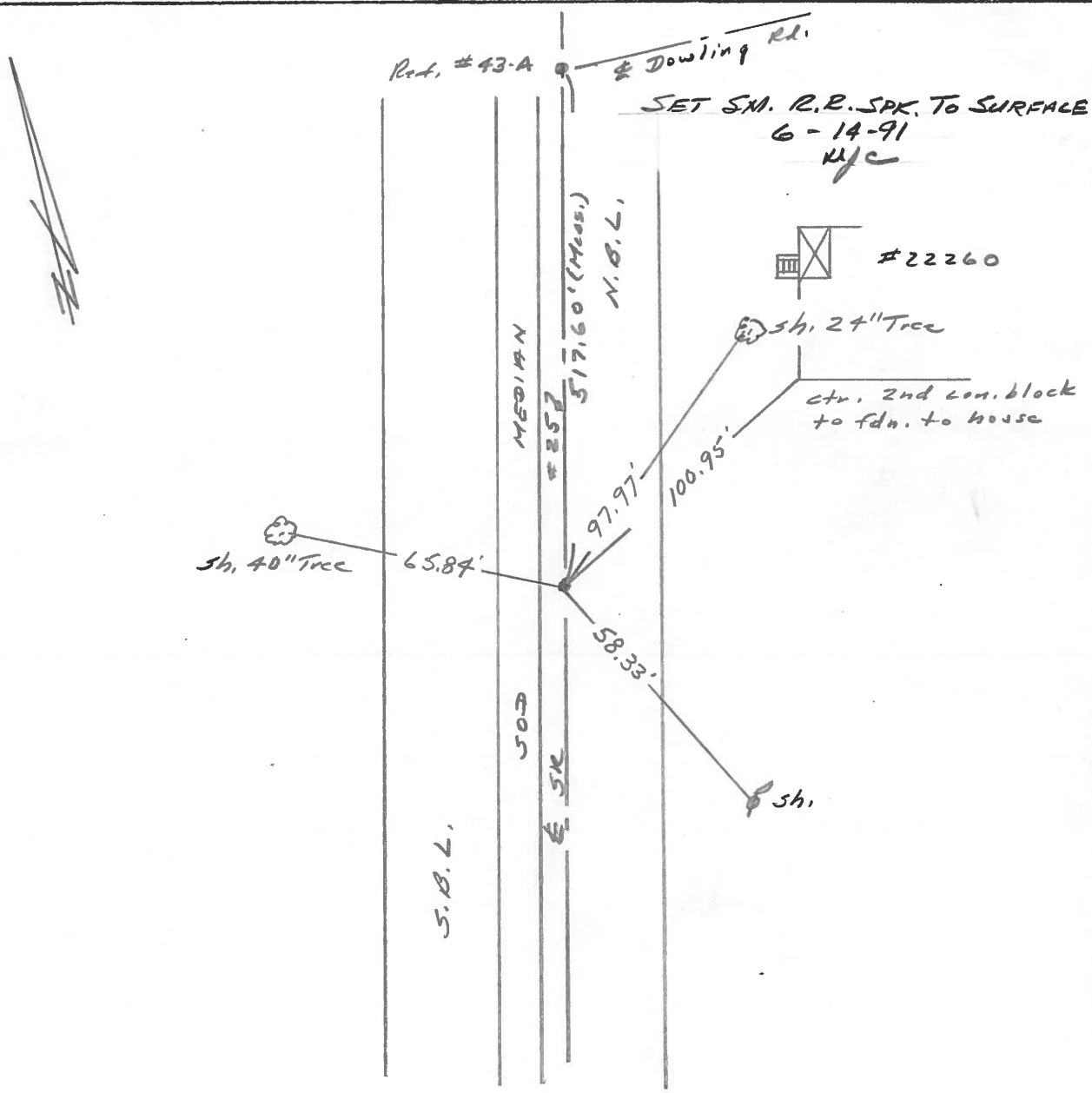
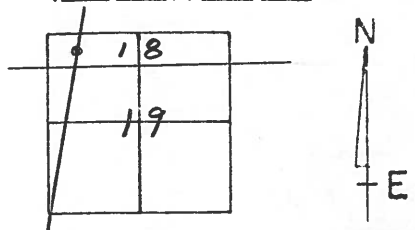
TYPE MONUMENT RR Spk

ON SURFACE - BELOW                     

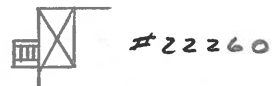
LEFT - & PAV'T. - RIGHT                     

     TO      EDGE PAVEMENT

S.L.M. 893+97



SET S.A. R.R. SPK. TO SURFACE  
6-14-91  
WJC



ctr. 2nd con. block  
to fdn. to house

County Wood S.R. 25

Date 11-19-81

Township MIDDLETON

Weather cloudy

Section 18

Temp. +45°

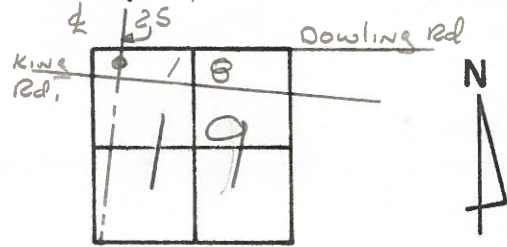
T6N, R10E

Personnel HOFFMAN

Householder

Loehrke

# 43



Fd. BRASS mod. 2" Below SURFACE  
5.7' W. of & PAUT N.B.L.  
4.8' E. of WEP

PROJECT Sta ± 894+35

STA. 332+04.25  
Δ = 0° - 40' LT. REC.

SET SMALL P.P. Sdk.  
8-5-83 S.W.H.

