

O.D.O.T. DISTRICT 2 SURVEY OFFICE (USE ONLY)

PERSONNEL

REFERENCE NO. 43 A

SHEET 3 OF 19

NOTES LEU DATE 5/28/20
 H.C. O'DONNELL WEATHER CLOUDY
 R.C. AUBLE TEMP. 74°
RHOADES

ROUTE SR 25
 COUNTY WOOD
 TOWNSHIP MIDDLETON
 SECTION 18

DWG BY RHOADES PID 95722

T 6 N R 11 E

TYPE MONUMENT MAG NAIL

ON SURFACE - ~~BELOW~~ ON

OFFSET \odot PAVEMENT 6.8' LT : ~~RT~~

3.7' TO LT EDGE PAVEMENT

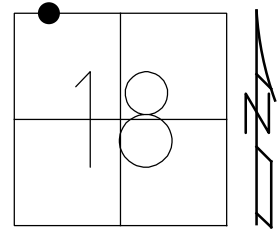
STATION: 910+73.67

HORZ.DATUM: NAD83 (2011)

GEOID: NAVD88 2012A

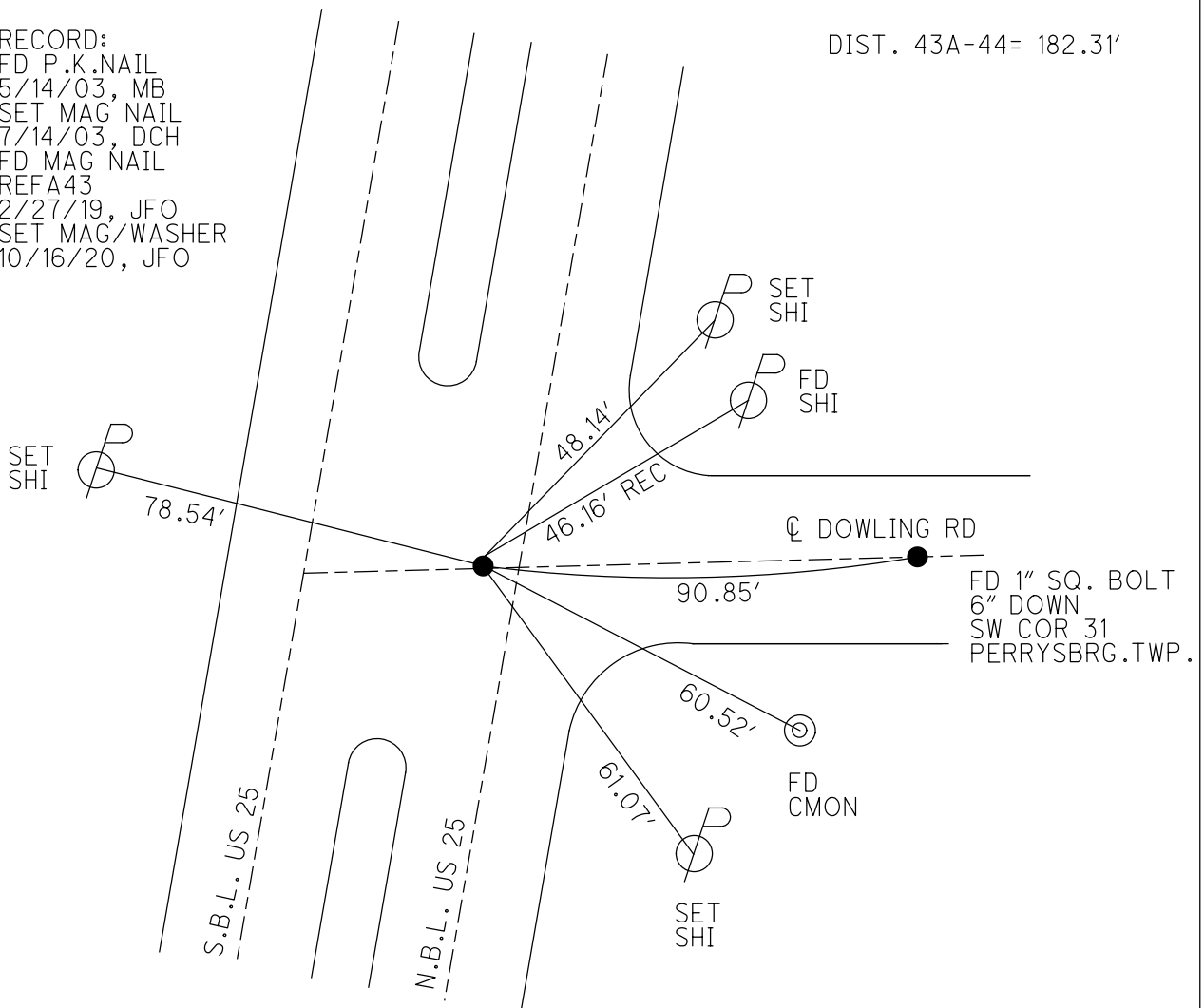
GRID: NORTHING: 661945.809

EASTING: 1654282.771



RECORD:
 FD P.K.NAIL
 5/14/03, MB
 SET MAG NAIL
 7/14/03, DCH
 FD MAG NAIL
 REFA43
 2/27/19, JFO
 SET MAG/WASHER
 10/16/20, JFO

DIST. 43A-44= 182.31'



O.D.O.T. DISTRICT 2 SURVEY OFFICE

6 of 12

PERSONNEL

REFERENCE NO. 43A

SHEET 3 OF 29

NOTES BARNHISEL

DATE 5/14/03

ROUTE SR 25

H.C. CANTERBURY

WEATHER CLEAR

COUNTY WOOD

R.C. RYALL

TEMP. +60°

TOWNSHIP MIDDLETON

HOMAN

SECTION 18

GLASS

T 6 N R 1 E

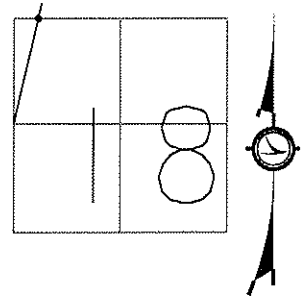
TYPE MONUMENT PK NAIL

ON SURFACE - ~~BELOW~~ SURFACE

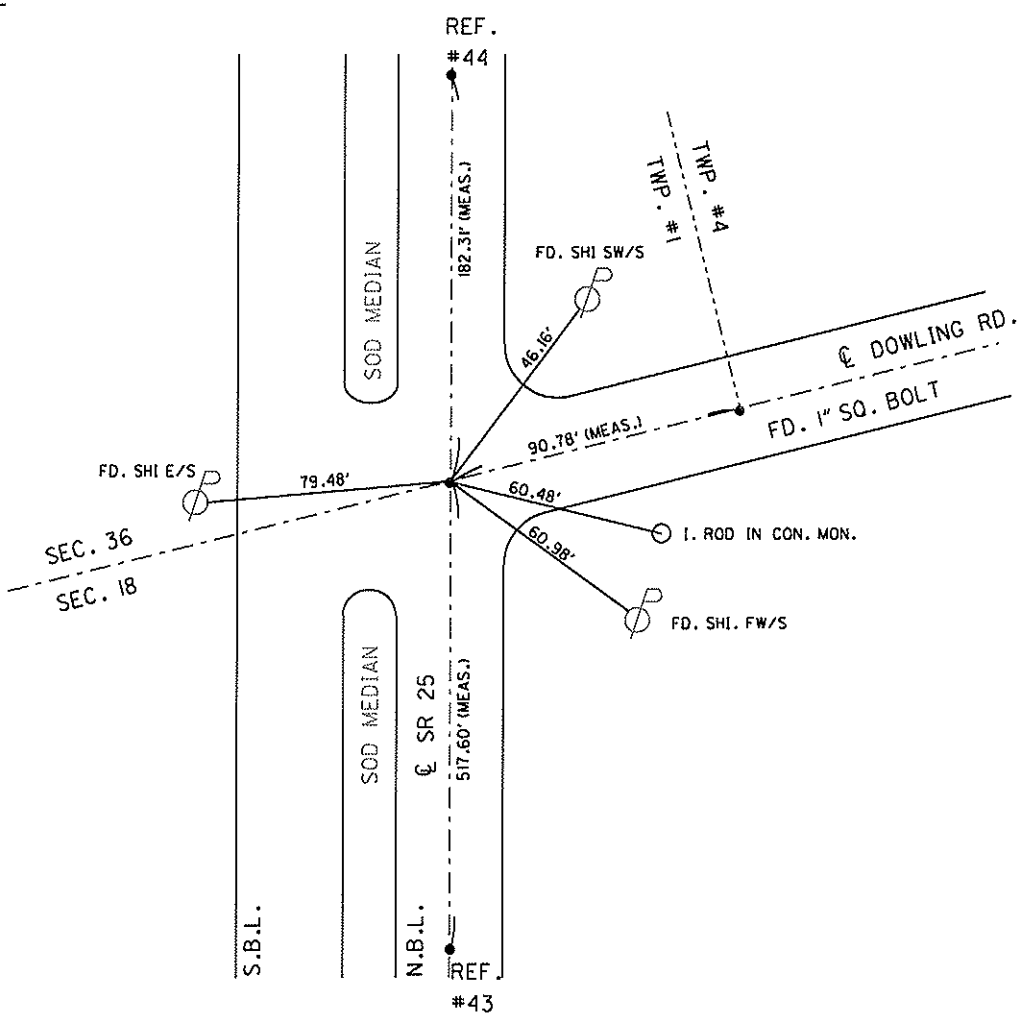
LEFT - ~~6 PAVT~~ RIGHT 7.2'

3.7 TO LT. EDGE PAVEMENT

S.L.M. 899+14.6



SET MAG NAIL
7/14/03 DCH



O.D.O.T. DISTRICT 2 SURVEY OFFICE

PERSONNEL

REFERENCE NO. 43-A

SHEET 3 OF 29

NOTES 1. Stone

H.C. D. Curtis'

R.C. J. Household

DATE 10 April 91

WEATHER Windy

TEMP. 38°

ROUTE SR#25

COUNTY Wood

TOWNSHIP Middleton

SECTION 18

T. R.

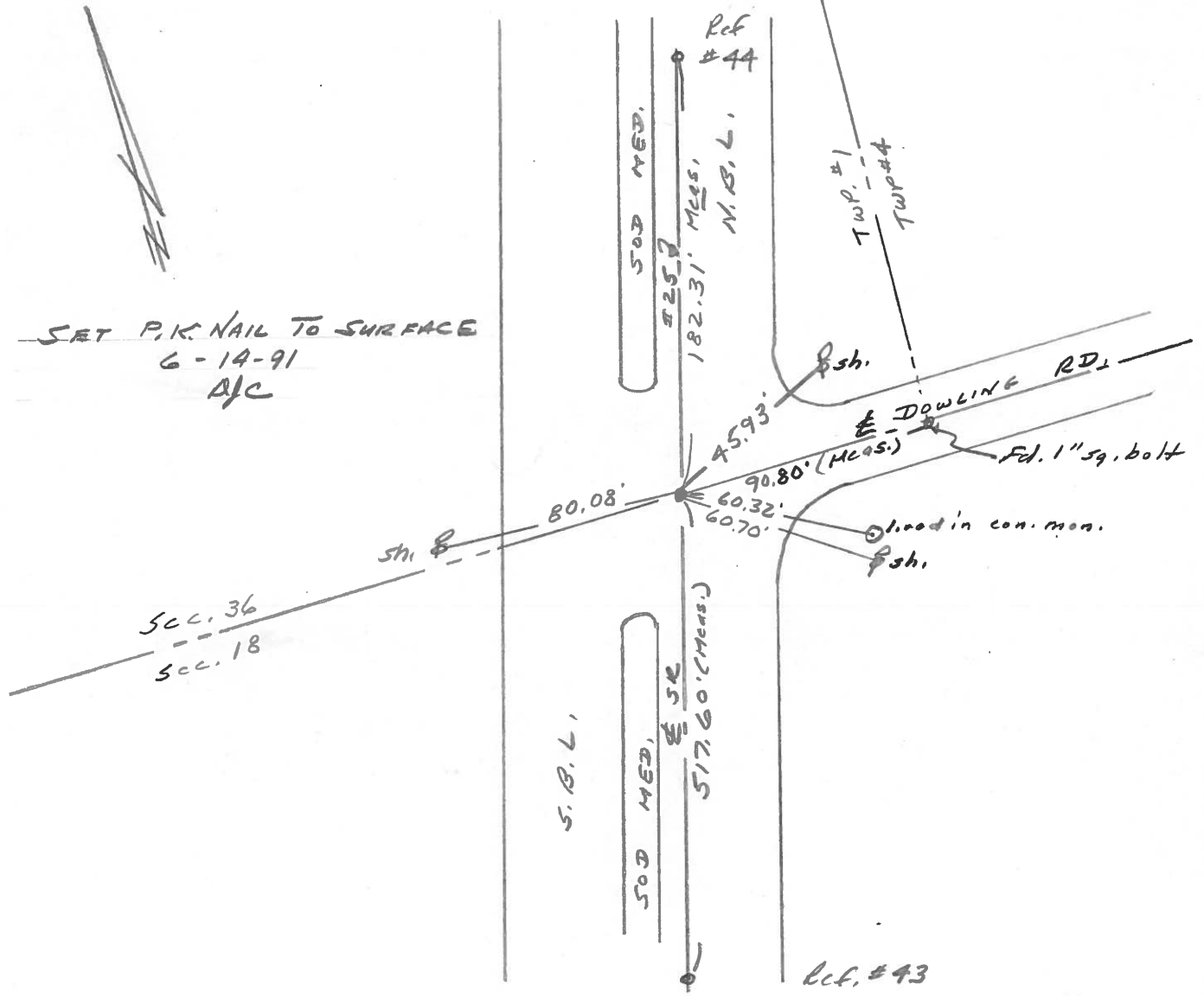
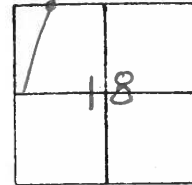
TYPE MONUMENT PK Nail

ON SURFACE - BELOW Surface

LEFT- & PAV'T. - RIGHT

 TO EDGE PAVEMENT

S.L.M. 899+14.6



ODOT DISTRICT 2 SURVEY OFFICE

SHEET _____ OF _____

County Wood S.R. 25

Date 11-23-81

Township MIDDLETON

Weather Clear

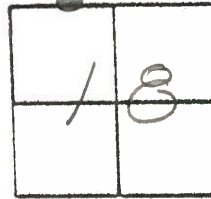
Section 18

Temp. +38°

T6N, R10E

Personnel HOFFMAN
Loehrke

43-A



Fd. P.K. @ surface
6.7' W. of & PAUT N.B.L. SR 25
& PAUT Dowling Rd.

Project sta ± 899+53

(set by others)

SET P.K./WASHER
8-5-83 S.W.H.

