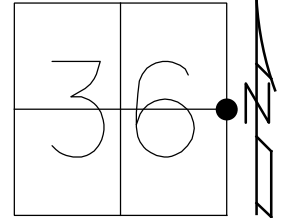


O.D.O.T. DISTRICT 2 SURVEY OFFICE (USE ONLY)

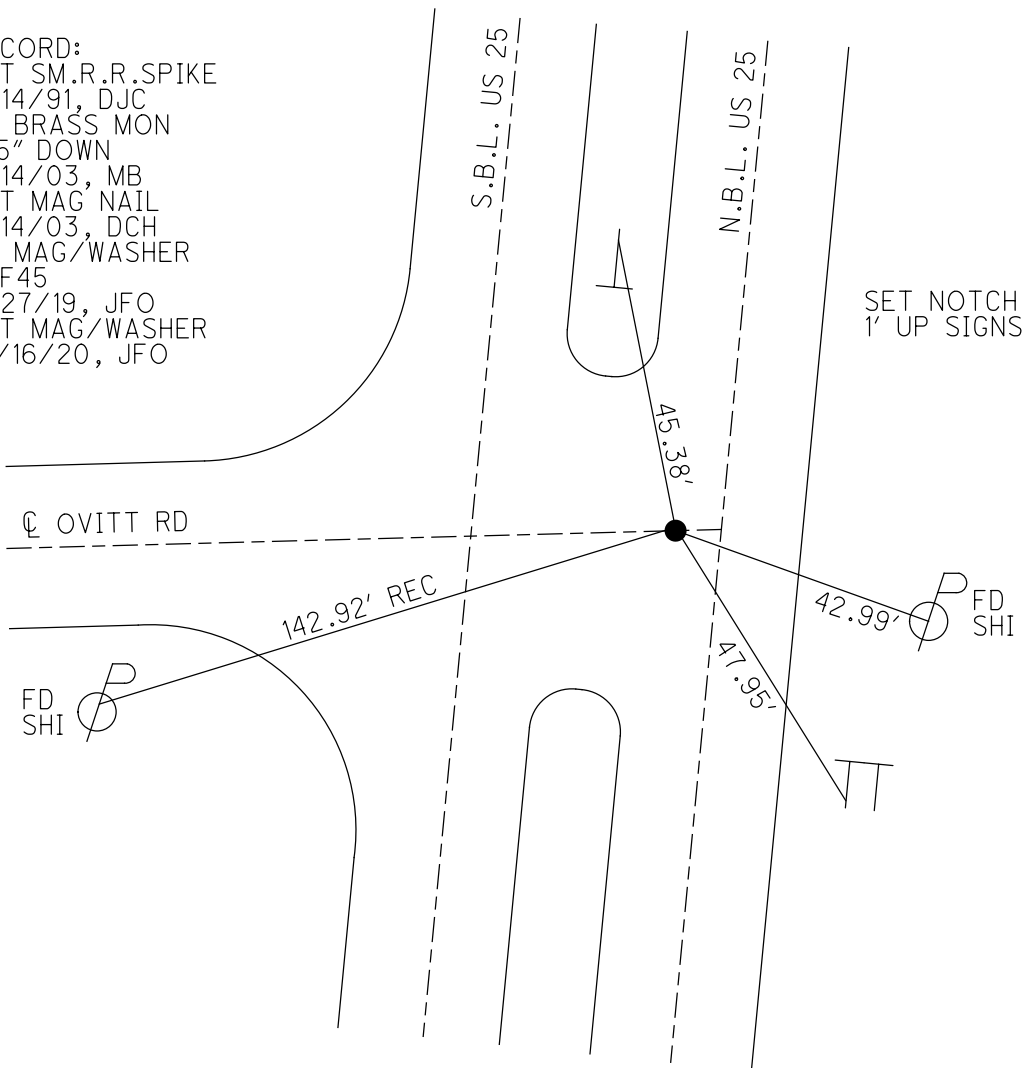
PERSONNEL _____ REFERENCE NO. 45 SHEET 5 OF 19
 NOTES LEU DATE 5/28/20 ROUTE SR 25
 H.C. O'DONNELL WEATHER LIGHT RAIN COUNTY WOOD
 R.C. AUBLE TEMP. 74° TOWNSHIP MIDDLETON
 _____ RHOADES SECTION 36
 DWG BY RHOADES PID 95722 T 6 N R 11 E

TYPE MONUMENT MAG/WASHER
 ON SURFACE - ~~BELOW~~ ON _____
 OFFSET CL PAVEMENT 6.4' LT : ~~RT~~
5.1' TO LT EDGE PAVEMENT
 STATION: 937+81.48



HORIZ.DATUM: NAD83 (2011) GEOID: NAVD88 2012A
 GRID: NORTHING: 664618.866 EASTING: 1654715.190

RECORD:
 SET SM.R.R.SPIKE
 6/14/91, DJC
 FD BRASS MON
 4.5" DOWN
 5/14/03, MB
 SET MAG NAIL
 7/14/03, DCH
 FD MAG/WASHER
 REF45
 2/27/19, JFO
 SET MAG/WASHER
 10/16/20, JFO



O.D.O.T. DISTRICT 2 SURVEY OFFICE

8 of 12

PERSONNEL

REFERENCE NO. 45

SHEET 5 OF 29

NOTES BARNHISEL

DATE 5/14/03

ROUTE SR #25

H.C. CANTERBURY

WEATHER CLEAR

COUNTY WOOD

R.C. RYALL

TEMP. +60°

TOWNSHIP MIDDLETON

HOMAN

SECTION 36

GLASS

T N R E

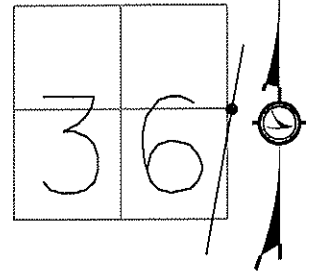
TYPE MONUMENT BRASS MON.

~~ON SURFACE~~ - BELOW 4.5"

~~LEFT - $\frac{1}{2}$ PAVT - RIGHT~~ 5.9'

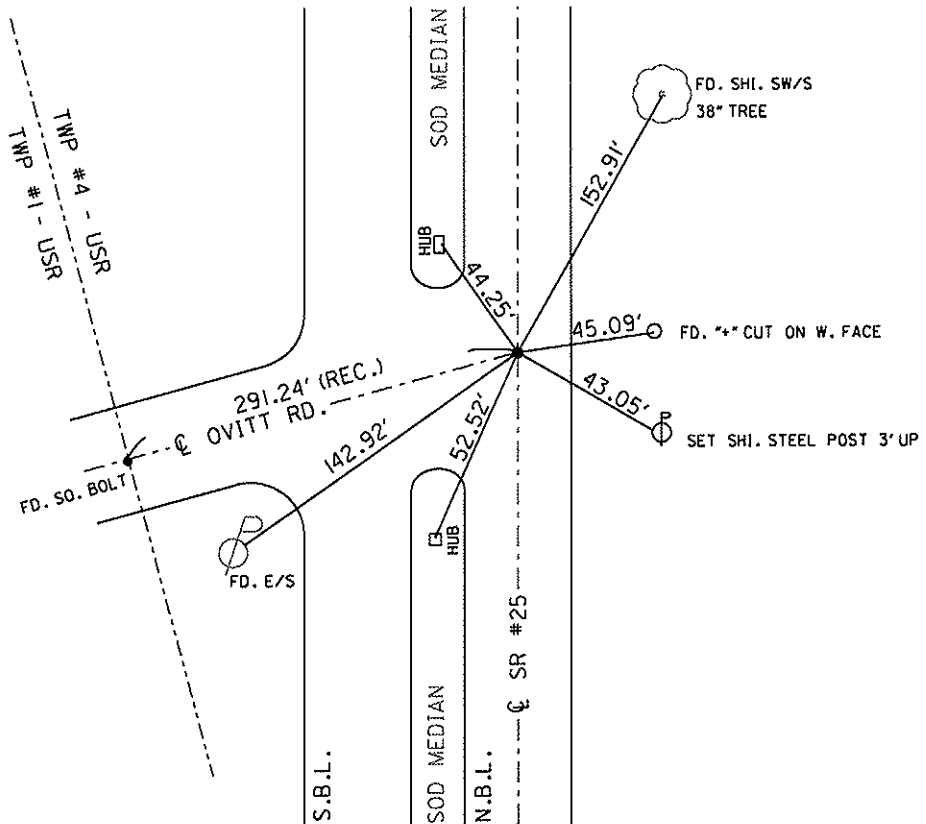
5.1 TO LT EDGE PAVEMENT

S.L.M. 926+22



SET MAG NAIL
7/14/03 DCH

SET SM. R.R. SPK. TO SURFACE
6/14/91 D.J.C.



O.D.O.T. DISTRICT 2 SURVEY OFFICE

PERSONNEL _____

REFERENCE NO. 45

SHEET 5 OF 29

NOTES 1. Stone

H.C. D. Curtis

R.C. J. Householder

DATE 10 April 91

WEATHER Windy

TEMP. 38°

ROUTE SR#25

COUNTY Wood

TOWNSHIP Middleton

SECTION 36

T _____ R _____

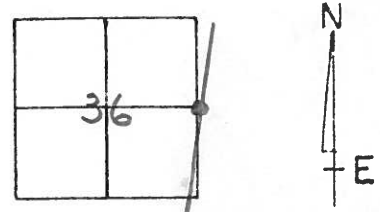
TYPE MONUMENT 5m. RR Spk

ON SURFACE - BELOW _____

LEFT - & PAV'T. - RIGHT _____

TO _____ EDGE PAVEMENT

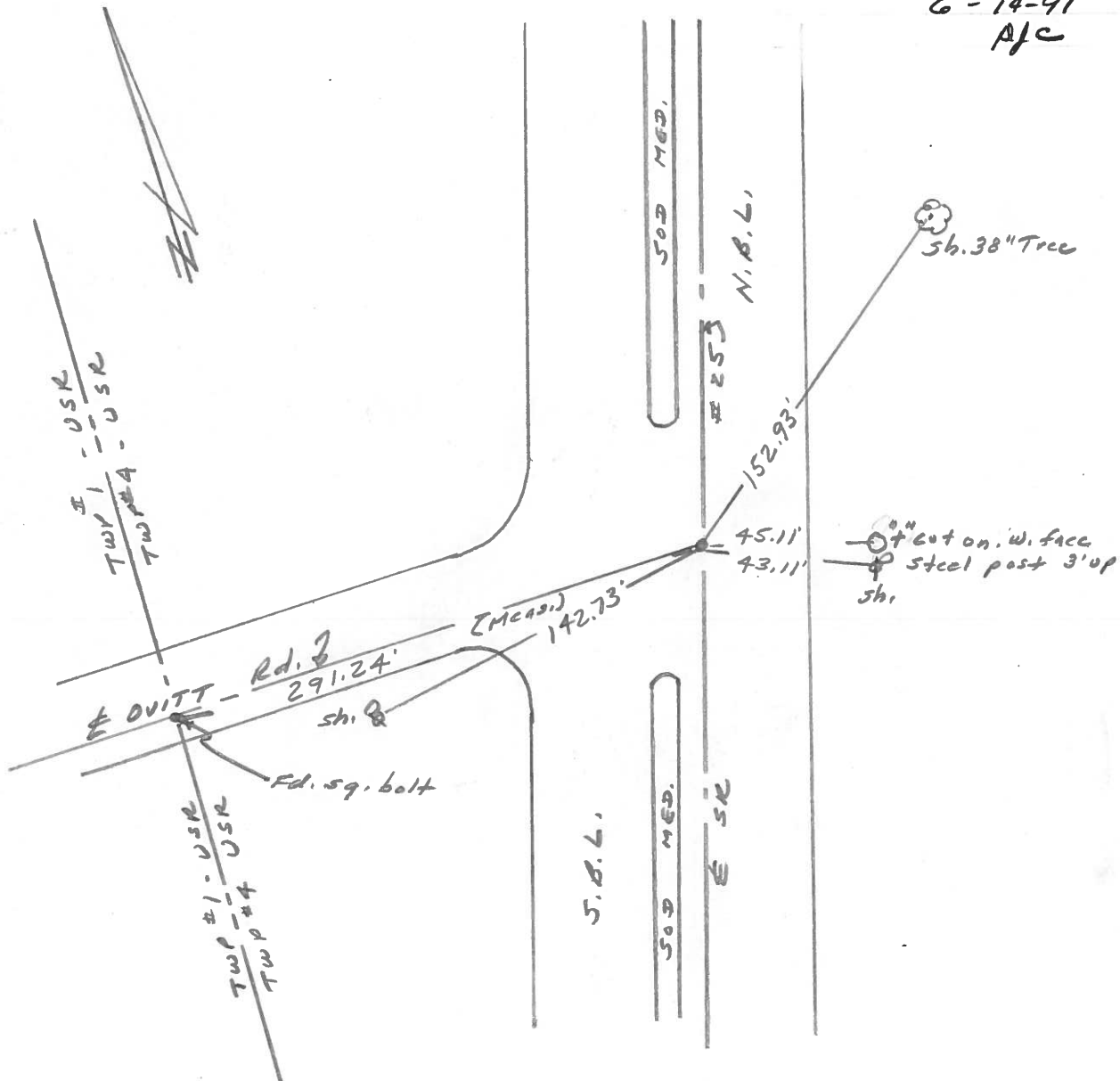
S.L.M. 926+22



SET 5M. R.R. SPK. TO SURFACE

6-14-91

AJC



County WOOD S.R. 25

Date 11-19-81

Township MIDDLETON

Weather cloudy

Section 36

Temp. +45°

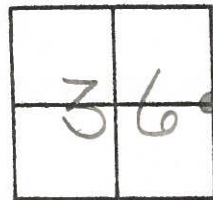
TZN, R10E

Personnel HOFFMAN

Householder

Loehrke

45



Fd. BRASS mon 1 1/4" Below surface
 6.0' W. of & PAUT, N.B.L. SR582
 3.0' S. of & PAUT, outt. Rd

project STA ± 926 + 61

STA. 364 + 30.30
 No & REC.

SET SMALL R.P. SPK.
 8-5-83 SW.H.

& PAUT OUTT Rd

141.36
 Shiner
 W/S

S.R. 25

& PAUT N.B.L.

152.79

Shiner
 W/S
 36" OAK

45.10

cut "+" on W. FACE
 of steel Fence Post
 (3' up)

43.14

Shiner
 W/S

PERSONNEL TITLE PERSONNEL TITLE

COUNTY Wood DATE 3-24-60

S. R. U.S. #25 WEATHER

SEC. TEMP.

DESCRIPTION

Mobora Mon. Raised & Greased

JOB NO.

LEFT	CENTER LINE	RIGHT
Sta. 339+04.60 $\Delta = 0^{\circ}15' \text{ Pt. Mon-set.}$ N. edge Drive To Midway Rest. & Nite club #273		Shiner Guard Rail Post W. 13.00 Shiner Guard Rail Post N.W. 21.21 N.E. to shiner in 24' apple 62.24' E. to shiner in 24' apple 115.95 S.E. to shiner in 24' stump 61.73 N.E. to x in Send pump island 75.13 N.E. to shiner in P.P. 53.13 Shiner in Guard Rail Post S.W. 22.99
Sta. 364+30.30 $\Delta = 0^{\circ}-00'$ Set mon. (45) #274	Oritt Rd.	S.E. Shiner P. Pole 46.61 N.E. to shiner in 30' Ash 61.92' S.W. to x on S.E. cor. top #2-6C.B. 46.03 N.W. to shiner in A. Post 71.38' Face iron cor post 3' up N.E. 45.15 W. to shiner 1' W. of E. edge Pav't S. bound lane 26.93
Sta. 391+72.19 $\Delta = 0^{\circ}-03' \text{ Pt. Mon.}$ (46) #275	REITZ Rd	W. N.W. to x on top Send E. curb #1-2C.B. 67.74, N.W. to x on top S.E. cor. #2-6C.B. 48.07 W.S.W. to x on top Send Conc/Hdul. 94.15 S.W. to x on top S.E. cor. #2-6C.B. 43.15 Shiner P. Pole N.E. 66.78 Face I. Pipe sign S.E. 3' above Ground 72.11 W. to shiner 1' W. of E. edge Pav't S.B. lane 27.72
Sta. 418+16.53 $\Delta = 0^{\circ}-00'$ Set mon. Front of Frank Fox Barn (47) #276		N.W. to shiner in fence post 86.30 S.W. to shiner in Anchor post. 87.28 S.E. to shiner in 20' maple 62.25 N.E. to shiner in P.P. 43.56' N.E. to shiner in cor. barn ^{120.39} 120.46' S.E. to shiner in cor. barn ^{100.38} 104.50' Shiner in 24" Maple 62.26'
Sta. 432+08.42 $\Delta = 0^{\circ}-00'$ R.P. Spike (48) #277	Did Not Find. 3-25-60	N.E. to shiner in 28" Apple 45.50' S.E. to shiner in P.P. 80.03' N.W. to shiner in T.P. 90.43' S.W. to N.E. cor. #1-2C.B. 63.15' S.E. to shiner in P.P. 80.09' N.E. to R.P. spk. in P.P. 60.44'