

O.D.O.T. DISTRICT 2 SURVEY OFFICE (USE ONLY)

PERSONNEL

REFERENCE NO. 46

SHEET 6 OF 19

NOTES LEU

DATE 5/28/20

ROUTE SR 25

H.C. O'DONNELL

WEATHER LIGHT RAIN

COUNTY WOOD

R.C. AUBLE

TEMP. 74°

TOWNSHIP MIDDLETON

RHOADES

DWG BY RHOADES PID 95722

SECTION 30

T 6 N R 11 E

TYPE MONUMENT MAG/WASHER

ON SURFACE - ~~BELOW~~ ON

OFFSET ☉ PAVEMENT 5.2' LT : ~~RT~~

5.9' TO LT EDGE PAVEMENT

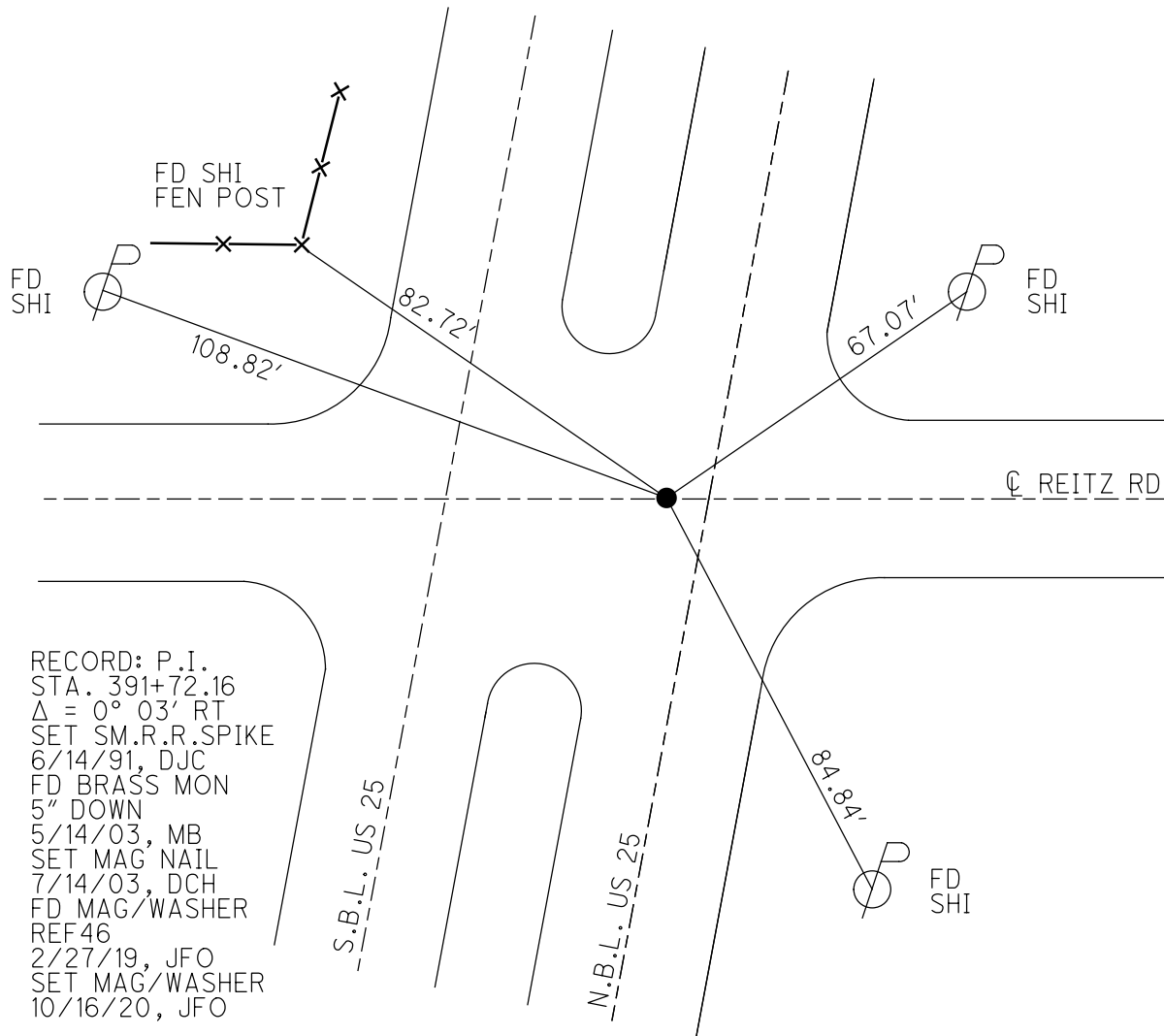
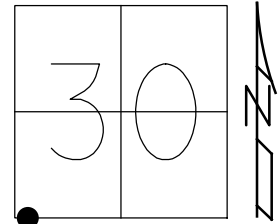
STATION: 965+22.66

HORZ. DATUM: NAD83 (2011)

GEOID: NAVD88 2012A

GRID: NORTHING: 667324.625

EASTING: 1655154.430



O.D.O.T. DISTRICT 2 SURVEY OFFICE

9 of 12

PERSONNEL

REFERENCE NO. 46

SHEET 6 OF 29

NOTES BARNHISEL
 H.C. CANTERBURY
 R.C. RYALL
 HOMAN
 GLASS

DATE 5/14/03
 WEATHER CLEAR
 TEMP. +65°

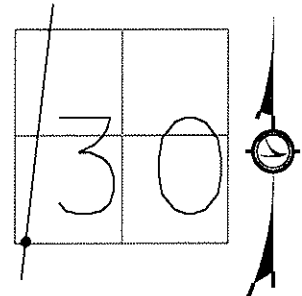
ROUTE SR #25
 COUNTY WOOD
 TOWNSHIP PERRYSBUR
 SECTION 30
 T N R E

TYPE MONUMENT BRASS MON.

~~ON SURFACE~~ - BELOW 5"

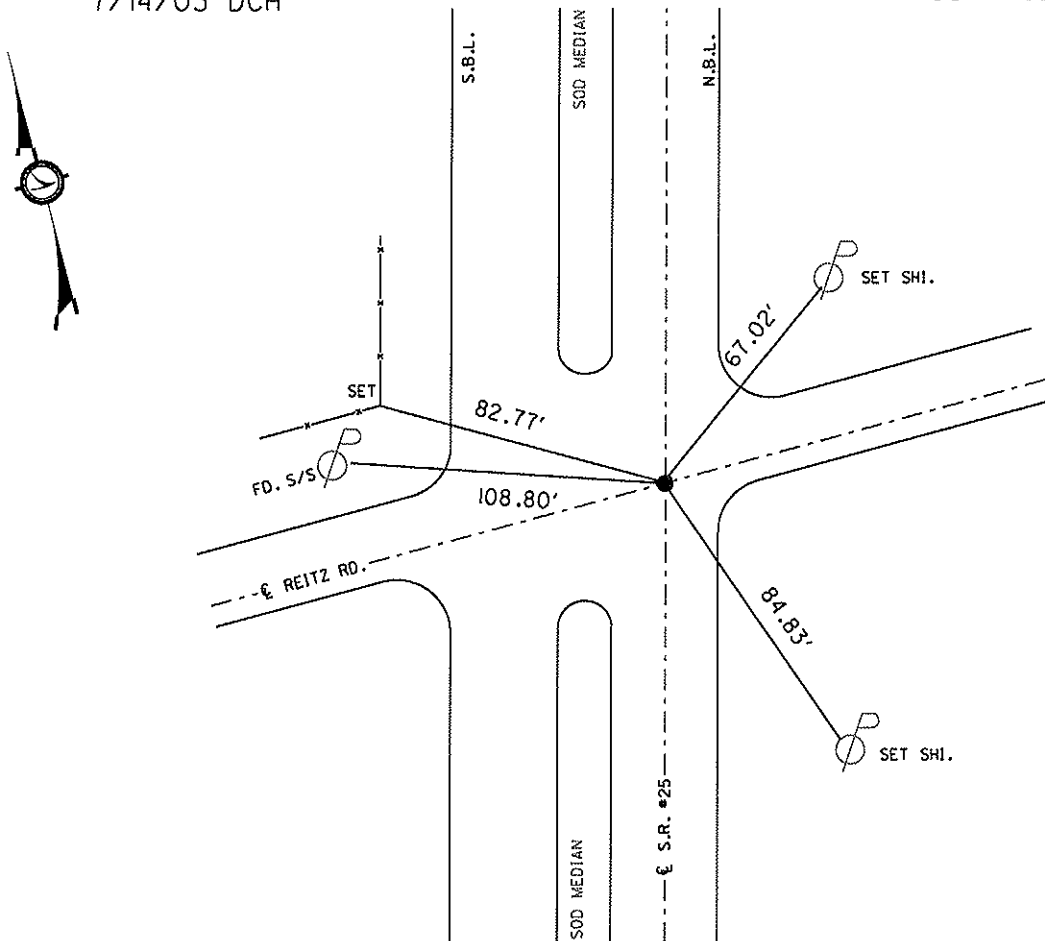
LEFT - ~~6 PAVT~~ RIGHT

5.9 TO LT EDGE PAVEMENT
 S.L.M. 953+63



SET MAG NAIL
 7/14/03 DCH

SET SM. R.R. SPK. TO
 SURFACE 6/14/91 DJC



O.D.O.T. DISTRICT 2 SURVEY OFFICE

PERSONNEL _____

REFERENCE NO. 46

SHEET 6 OF 29

NOTES 1. Stone

H.C. D. Curtis

R.C. J. Householder

DATE 10 April 91

WEATHER Windy

TEMP. 38°

ROUTE SR# 25

COUNTY Wood

TOWNSHIP Perryburg

SECTION 30

T _____ R _____

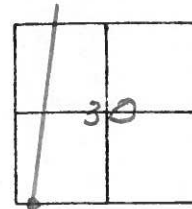
TYPE MONUMENT Sm. RR Spk.

ON SURFACE - BELOW _____

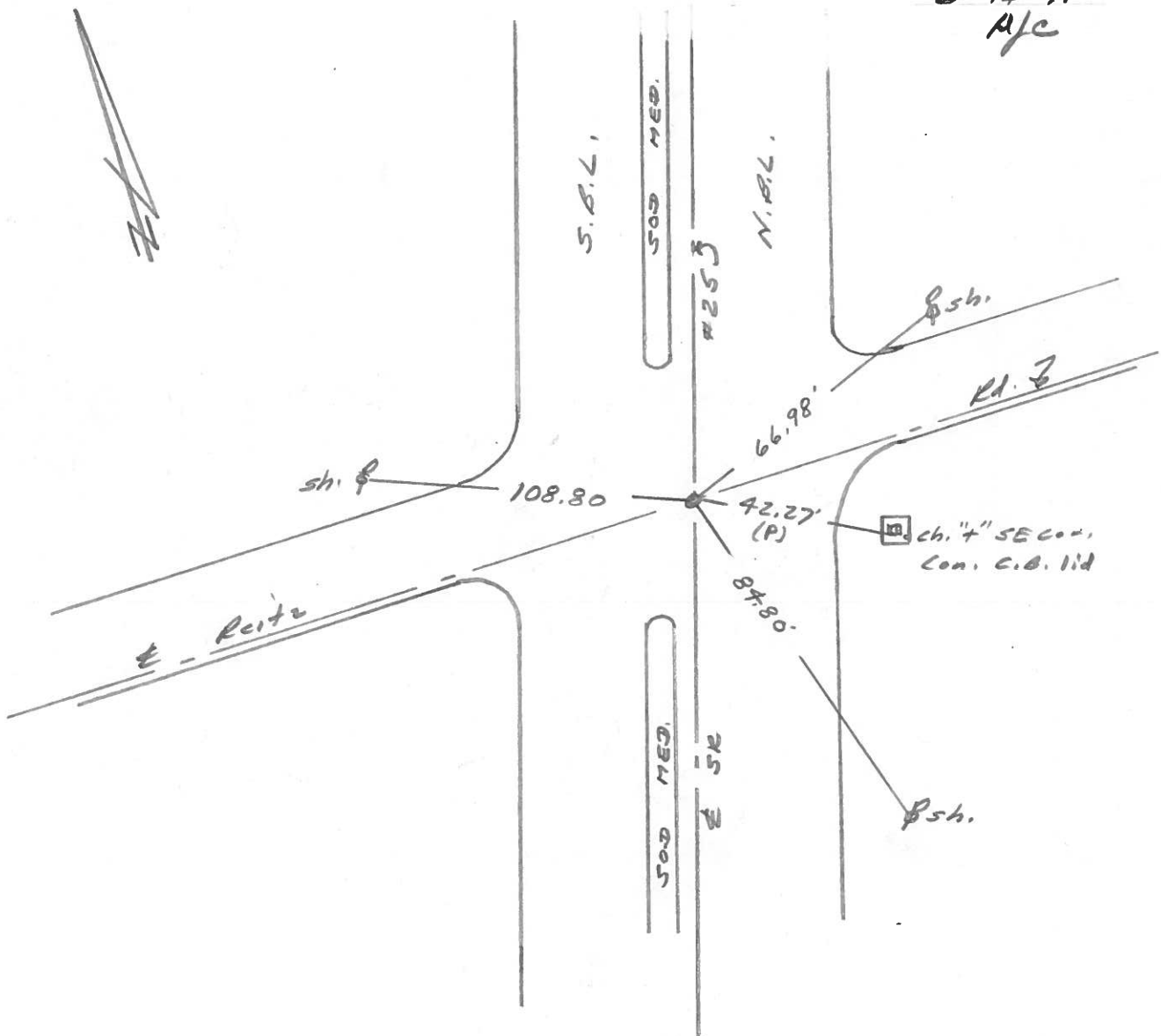
LEFT- & PAV'T. - RIGHT _____

TO _____ EDGE PAVEMENT

S.L.M. 953+63



SET SM. R.R. SPK. TO SURFACE
6-14-91
A/c



County Wood S.R. 25

Date 11-19-81

Township Perrysburg

Weather cloudy

Section 30

Temp. +45°

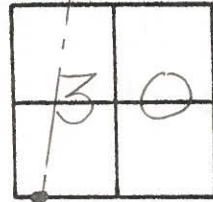
T7N, R11E

Personnel HOFFMAN

Houscholder

Loehrke

46



Fd. BRASS MOD. 1 1/2" Below Surface

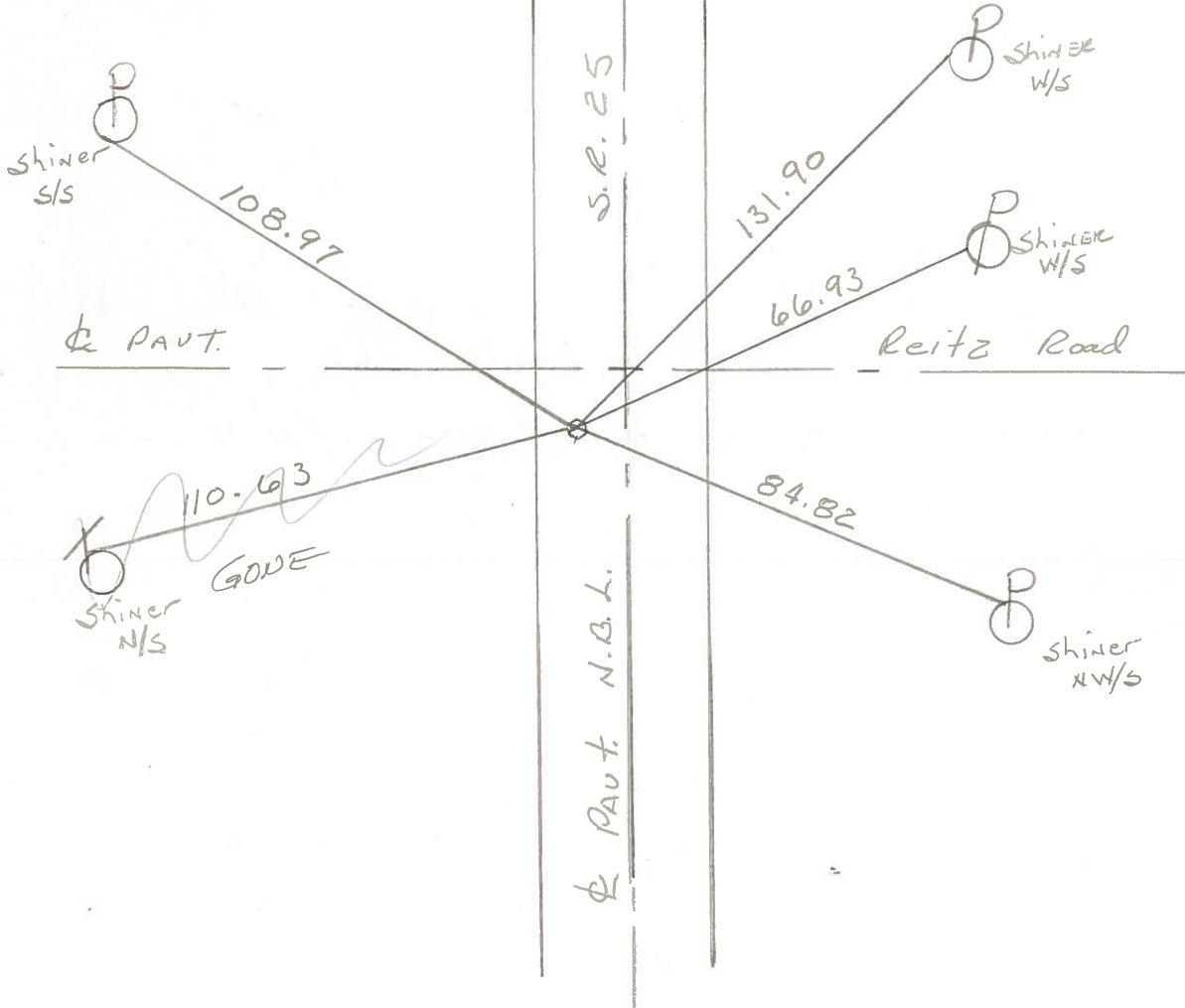
Project sta. ± 954+03

5.2' W. of & PAUT, S.R. 25 N.B.L.

@ S. EP of REITZ

SET SMALL R.R. S.P.K.
8-5-83 S.W.H.

STA. 391+72.19 REC.
Δ = 0°-03' RT.



PERSONNEL _____ TITLE _____ PERSONNEL _____ TITLE _____
 COUNTY Wood DATE 3-24-60
 S. R. U.S. #25 WEATHER _____
 SEC. _____ TEMP. _____
 DESCRIPTION Mobara Mon. Raised & Greased JOB NO. _____

LEFT	CENTER LINE	RIGHT
Sta. 339+04.60 Δ = 0° 15' Rt. <u>Mon-set.</u> N. edge Drive to Midway Rest. & Nite club #273		Shiner Guard Rail Post W. 13.0 Shiner Guard Rail Post NW. 21.2 N.E. to shiner in 24" apple 62.24 E. to shiner in 24" apple 115.95 S.E. to shiner in 24" stump 61.73 N.E. to x in S. end pump island 75.13 N.E. to shiner in P.P. 53.11 Shiner in Guard Rail Post S.W. 22.99
Sta. 364+30.30 Δ = 0° 00' <u>Set mon.</u> (45) #274	<u>critt Rd.</u>	S.E. Shiner P. Pole 46.6 N.E. to shiner in 30" Ash 67.92 S.W. to x on S.E. cor. top #2-6 C.B. 46.0 N.W. to shiner in A. Post 71.38 Face iron cor post 3' up N.E. 45.15 W. to shiner 1' W. of E. edge Pav't S. bound lane 26.92
Sta. 391+72.19 Δ = 0° 03' Rt. <u>Mon.</u> (46) #275	<u>REITZ Rd</u>	W. N.W. to x on top S. end E. curb #1-2 C.B. 67.74 N.W. to x on top S.E. cor. #2-6 C.B. 48.0 W.S.W. to x on top S. end Conc'd Hdw. 94. S.W. to x on top S.E. cor. #2-6 C.B. 43. Shiner P. Pole N.E. 66.7 Face I. Pipe sign S.E. 3' above Ground 72.1 W. to shiner 1' W. of E. edge Pav't S.B. lane 27.7
Sta. 418+16.53 Δ = 0° 00' <u>Set mon.</u> Front of Frank Fox Barn (47) #276		N.W. to shiner in fence post 86.3 S.W. to shiner in Anchor post 87.2 S.E. to shiner in 20" maple 62.25 N.E. to shiner in P.P. 43.56 N.E. to shiner in cor. barn ^{120.39} 120.45 S.E. to shiner in cor. barn ^{100.39} 104.50 Shiner in 24" Maple 62.26
Sta. 432+08.42 Δ = 0° 00' R.R. Spike (48) #277	<u>Did Not Find.</u> 3-25-60	N.E. to shiner in 28" Apple 45.50 S.E. to shiner in P.P. 80.03 N.W. to shiner in T.P. 90.43 S.W. to N.E. cor. #1-2 C.B. 63.15 S.E. to shiner in P.P. 80.09 N.E. to R.R. spk. in P.P. 60.44