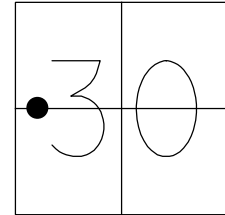


O.D.O.T. DISTRICT 2 SURVEY OFFICE (USE ONLY)

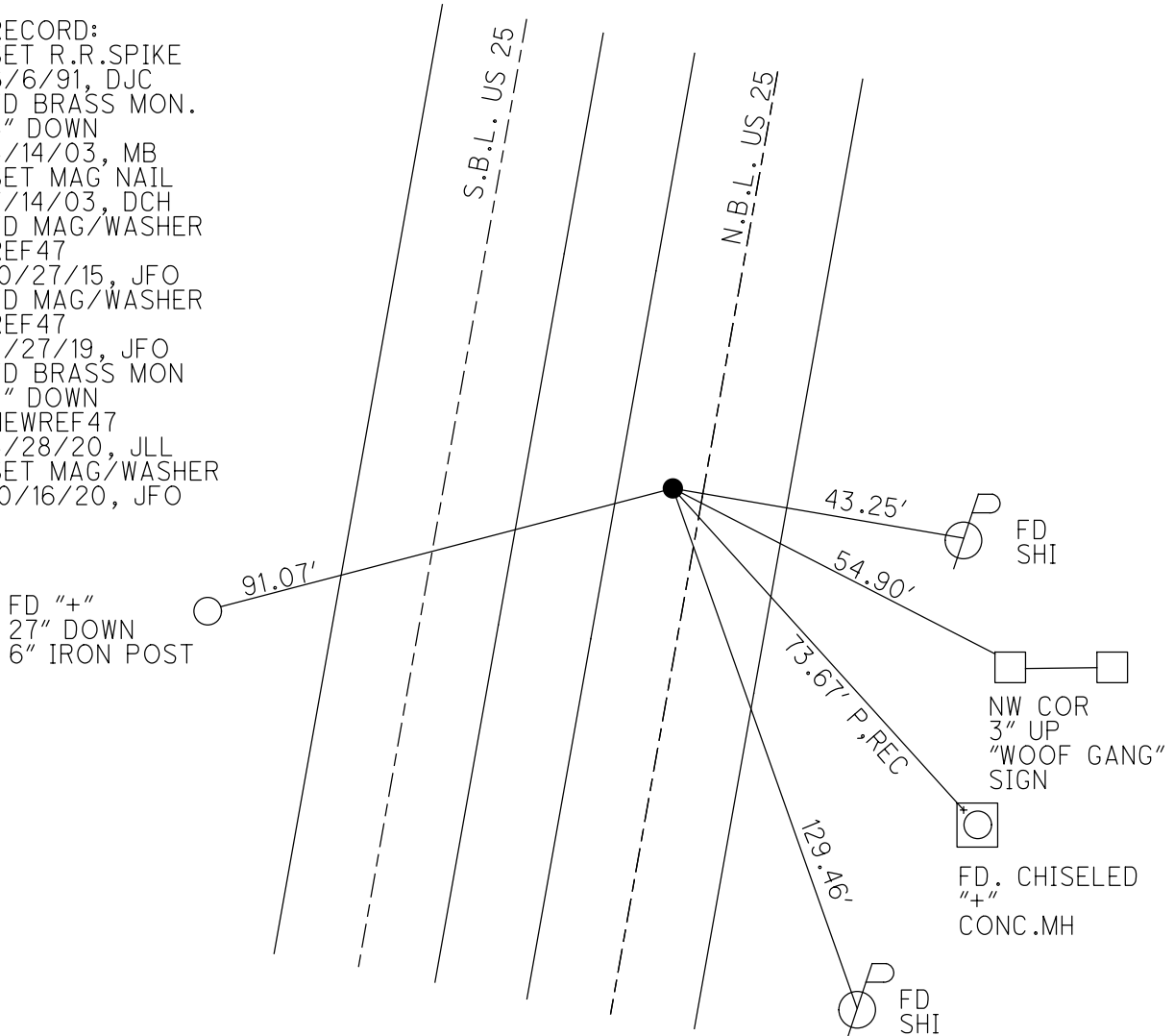
PERSONNEL _____ REFERENCE NO. 47 SHEET 7 OF 19
 NOTES LEU DATE 5/28/20 ROUTE SR 25
 H.C. O'DONNELL WEATHER CLOUDY COUNTY WOOD
 R.C. AUBLE TEMP. 74° TOWNSHIP PERRYSBURG
 _____ RHOADES SECTION 30
 DWG BY RHOADES PID 102808 T 6 N R 11 E

TYPE MONUMENT BRASS MON
 ON SURFACE - ~~BELOW~~ 4"
 OFFSET C PAVEMENT 5.8" LT : ~~RT~~
5.7' TO LT EDGE PAVEMENT
 STATION: 991+66.9



HORZ. DATUM: NAD83 (2011) GEOID: NAVD88 2012A
 GRID: NORTHING: 669934.335 EASTING: 1655980.694

RECORD:
 SET R.R. SPIKE
 6/6/91, DJC
 FD BRASS MON.
 5" DOWN
 5/14/03, MB
 SET MAG NAIL
 7/14/03, DCH
 FD MAG/WASHER
 REF47
 10/27/15, JFO
 FD MAG/WASHER
 REF47
 2/27/19, JFO
 FD BRASS MON
 4" DOWN
 NEWREF47
 5/28/20, JLL
 SET MAG/WASHER
 10/16/20, JFO

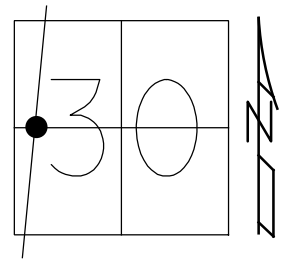


O.D.O.T. DISTRICT 2 SURVEY OFFICE (USE ONLY)

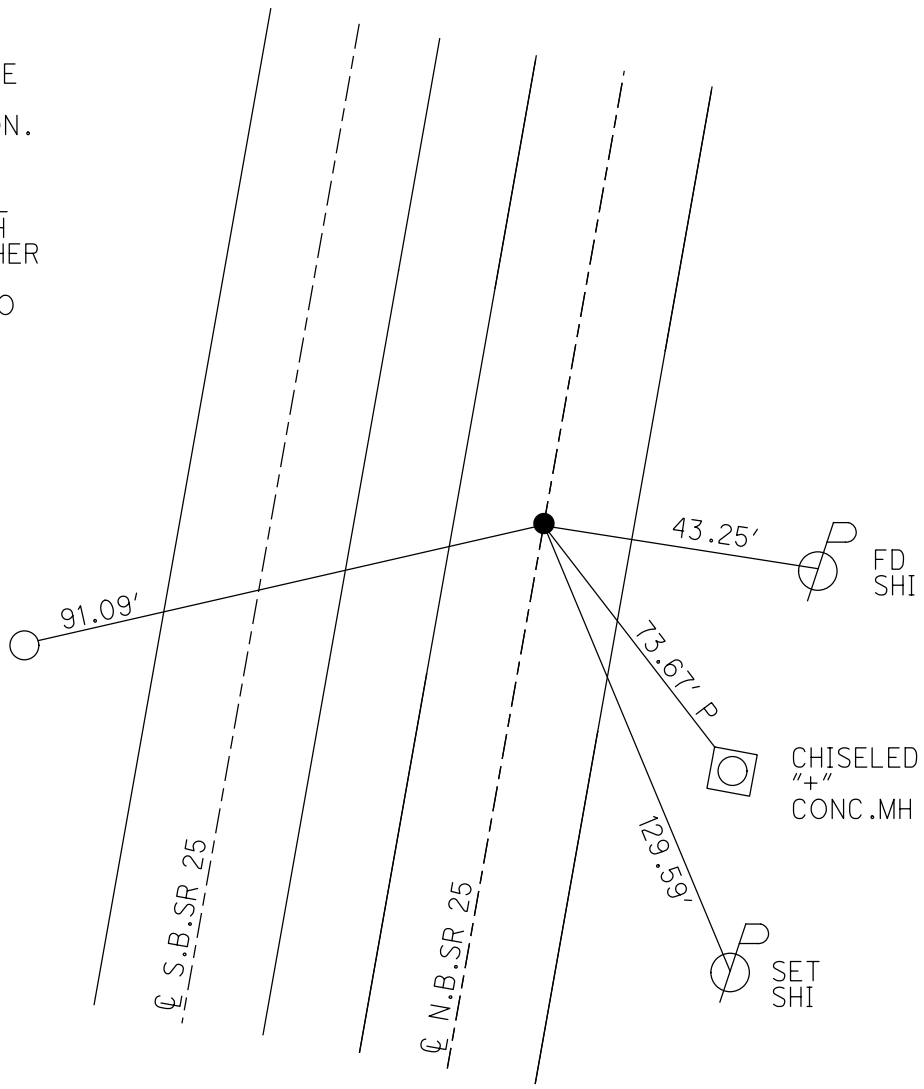
PERSONNEL _____ REFERENCE NO. 47 SHEET 1 OF 13
 NOTES BARNHISEL DATE 5/14/03 ROUTE SR 25
 H.C. CANTERBURY WEATHER SUNNY COUNTY WOOD
 R.C. RYALL TEMP. 65° TOWNSHIP PERRYSBURG
 HOMAN, GLASS SECTION 30
 DWG BY RHOADES PID 102808 T 6 N R 11 E

TYPE MONUMENT BRASS MON.
~~ON SURFACE~~ - BELOW 5"
 OFFSET 5.3' TO LT EDGE PAVEMENT
5.7' TO LT EDGE PAVEMENT
 STATION: 980+08

HORIZ. DATUM: NAD83 2011 GEOID: NAVD88 2012A
 GRID: NORTHING: 669934.335 EASTING: 1655580.694



RECORD:
 SET R.R. SPIKE
 6/6/91, DJC
 FD BRASS MON.
 5" DOWN
 5/14/03, MB
 SET MAG NAIL
 7/14/03, DCH
 FD MAG/WASHER
 REF47
 10/27/15, JFO



O.D.O.T. DISTRICT 2 SURVEY OFFICE

10 of 12

PERSONNEL

REFERENCE NO. 47

SHEET 7 OF 29

NOTES BARNHISEL

DATE 5/14/03

ROUTE SR #25

H.C. CANTERBURY

WEATHER SUNNY

COUNTY WOOD

R.C. RYALL

TEMP. +65°

TOWNSHIP PERRYSBUR

HOMAN

SECTION 30

GLASS

T₆₀N R11E

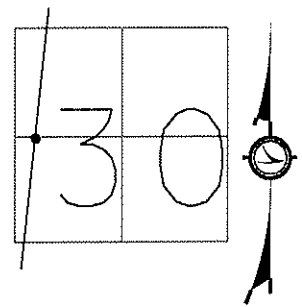
TYPE MONUMENT BRASS MON.

~~ON SURFACE~~ - BELOW 5"

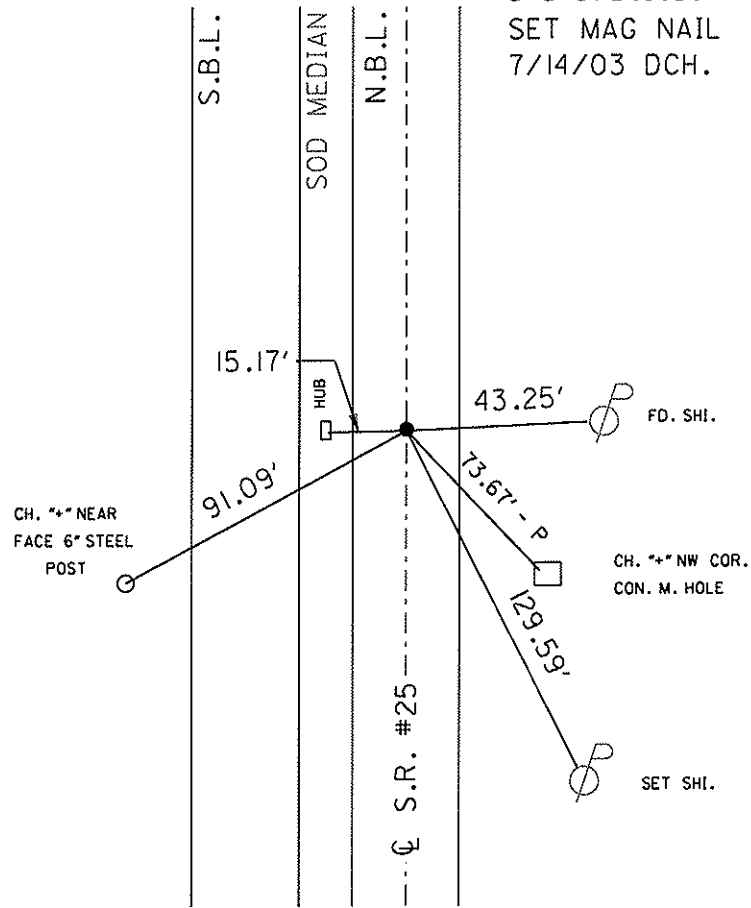
LEFT - ~~C~~ PAVT - RIGHT 5.3'

5.7 TO LT EDGE PAVEMENT

S.L.M. 980+08



SET SM. R.R. SPK. TO SURFACE
6-6-91 D.J.C.
SET MAG NAIL
7/14/03 DCH.



O.D.O.T. DISTRICT 2 SURVEY OFFICE

PERSONNEL _____

REFERENCE NO. 47

SHEET 7 OF 29

NOTES 1. Stone

H.C. D. Curtis

R.C. J. Householder

DATE 10 April 91

WEATHER Cold

TEMP. 38°

ROUTE SR# 25

COUNTY Wood

TOWNSHIP Perrysburg

SECTION 30

T _____ R _____

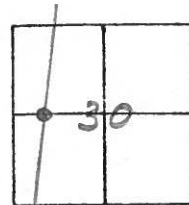
TYPE MONUMENT 5m. RR Spk

ON SURFACE - BELOW _____

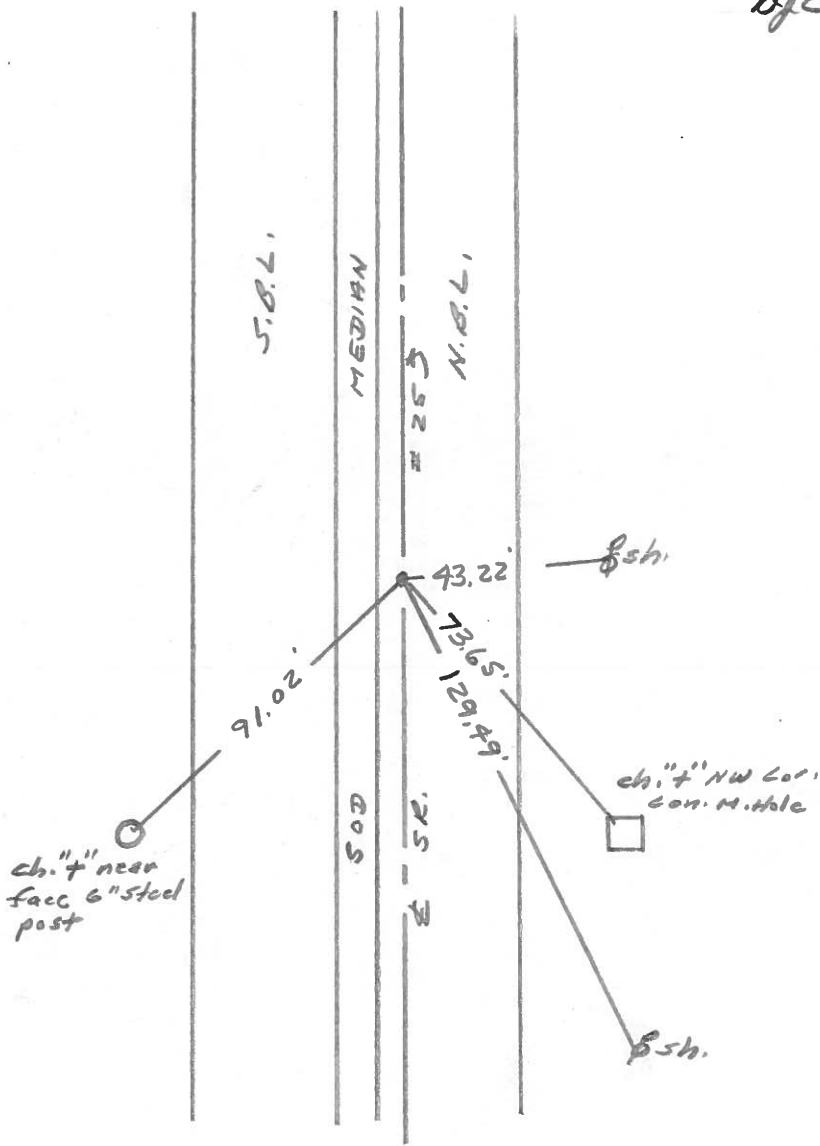
LEFT - & PAV'T. - RIGHT _____

_____ TO _____ EDGE PAVEMENT

S.L.M. 980408



SET 5m. R.R. SPK. TO SURFACE
6-6-91
DJC



County Wood S.R. 25

Date 11-19-81

Township Perrysburg

Weather cloudy

Section 30

Temp. +45°

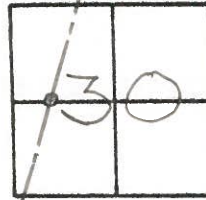
T7N, R11E

Personnel Hoffman

Householder

Loehrke

47

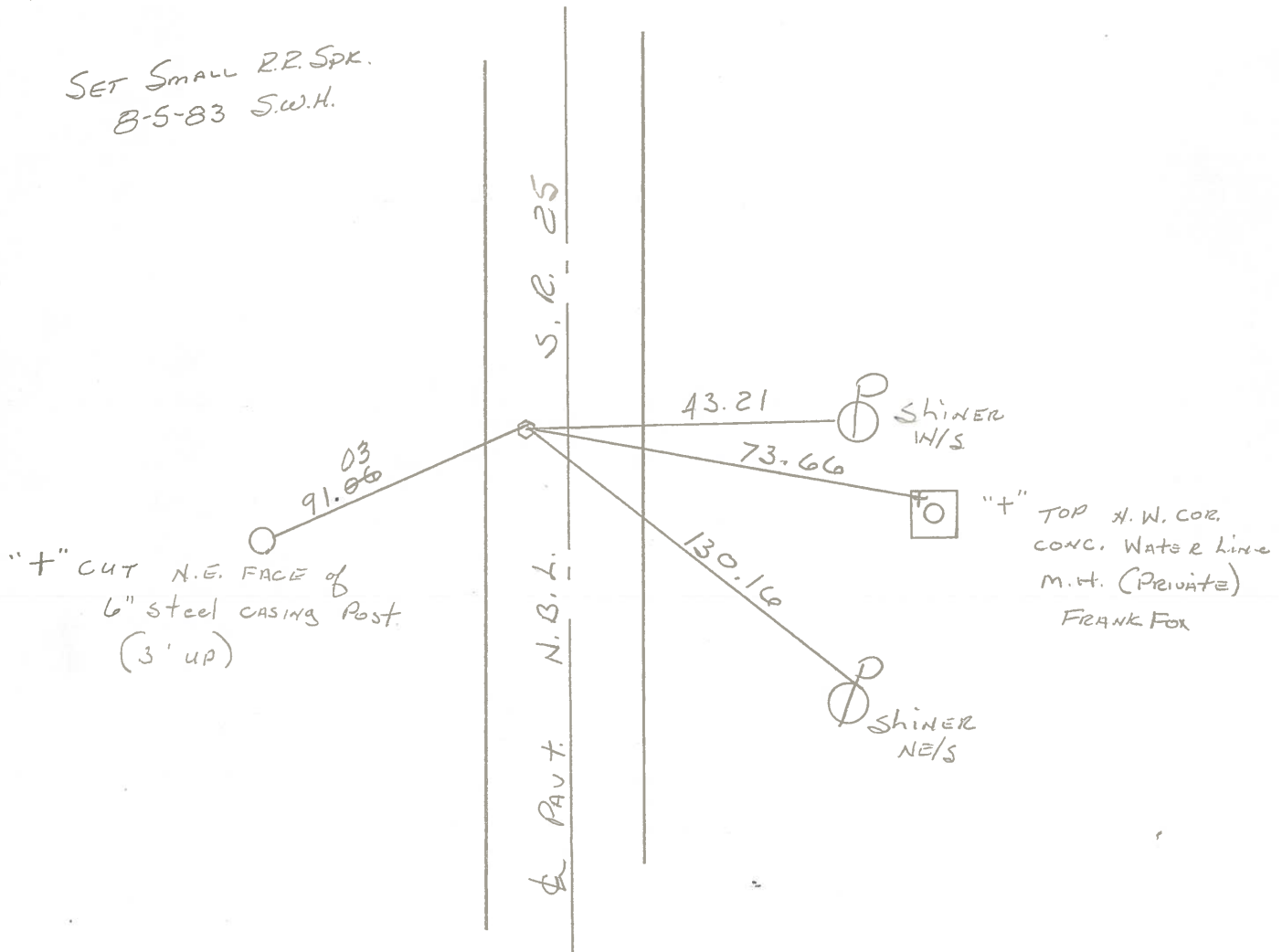


Fd. BRASS MON. 1 1/4" Below surface
5.0' W. of & PAUT, N.B.L., S.R. 25

Project sta. ± 980 + 47

Sta. 418 + 16.53
No & Rec.

SET Small R.R. Spk.
8-5-83 S.W.H.



PERSONNEL TITLE PERSONNEL TITLE

COUNTY Wood DATE 3-24-60

S. R. U.S. #25 WEATHER

SEC. TEMP.

DESCRIPTION

Mohora Mon. Raised & Greased

JOB NO.

LEFT

CENTER LINE

RIGHT

Sta. 339+04.60	$\Delta = 0^\circ 15' \text{ Rt.}$ <u>Mon-set.</u> N. edge Drive to Midway Rest. & Nite club	#273	Shiner Guard Rail Post W. 13.01 Shiner Guard Rail Post NW. 21.21 N.E. to shiner in 24' apple 62.24 E. to shiner in 24' apple 115.95 S.E. to shiner in 24' stump 61.73 N.E. to x in S end pump island 75.13 N.E. to shiner in P.P. 53.11 Shiner in Guard Rail Post S.W. 22.99
Sta. 364+30.30	$\Delta = 0^\circ - 00'$ <u>Set mon.</u>	#274	S.E. Shiner P. Pole 46.6 N.E. to shiner in 39" Ash 61.92 S.W. to x on S.E. cor. top #2-6C.B. 46.0 N.W. to shiner in A. Post 71.38 Face iron cor Post 3' up N.E. 45.15 W. to shiner 1' W. of E. edge Pavt S. bound lane 26.92
Sta. 391+72.19	$\Delta = 0^\circ - 03' \text{ Rt.}$ <u>Mon.</u> REITZ Rd	#275	W. N.W. to x on top S end E curb #1-2C.B. 67.74 N.W. to x on top S.E. cor. #2-6C.B. 48.0 W.S.W. to x on top S end Conc Hdwl. 94. S.W. to x on top S.E. cor. #2-6C.B. 43. Shiner P. Pole N.E. 66.7 Face I. Rope sign S.E. 3' above Ground 72.1 W. to shiner 1' W. of E edge Pavt S.B. lane 27.7
Sta. 418+16.53	$\Delta = 0^\circ - 00'$ <u>Set mon.</u> Front of Frank Fox Barn	#276	N.W. to shiner in fence post 86.3 S.W. to shiner in Anchor post. 87.2 S.E. to shiner in 20' maple 62.25 N.E. to shiner in P.P. 43.56 N.E. to shiner in cor. barn ^{120.39} 120.4E S.E. to shiner in cor. barn ^{100.39} 104.50 Shiner in 24" Maple 62.26
Sta. 432+08.42	$\Delta = 0^\circ - 00'$ R.P. Spike	#277	N.E. to shiner in 28" Apple 45.50 S.E. to shiner in P.P. 80.03 N.W. to shiner in T.P. 90.43 S.W. to N.E. cor. #1-2C.B. 63.15 S.E. to shiner in P.P. 80.09 N.E. to R.P. spk. in P.P. 60.44

Did Not Find.
3-25-60