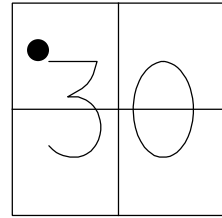


O.D.O.T. DISTRICT 2 SURVEY OFFICE (USE ONLY)

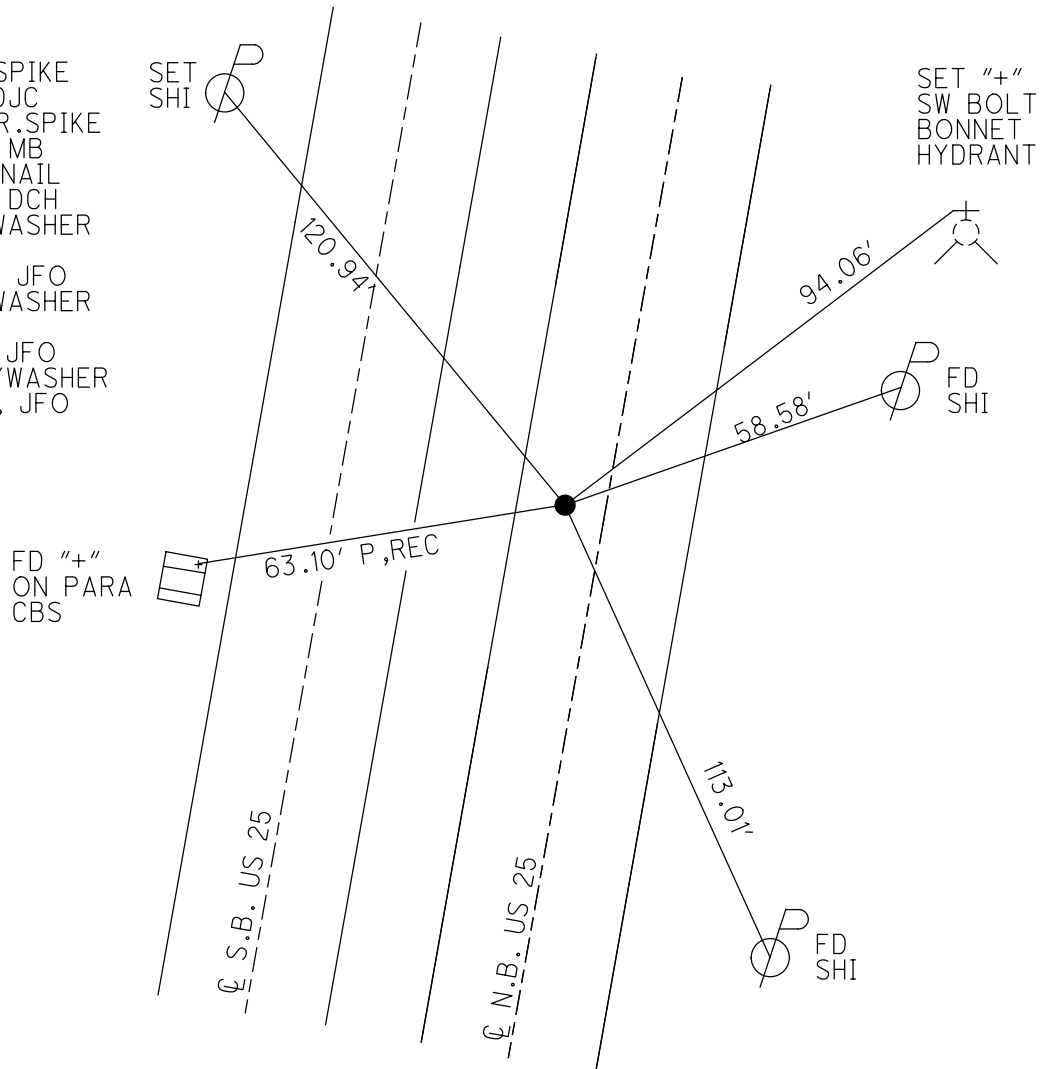
PERSONNEL \_\_\_\_\_ REFERENCE NO. 48 SHEET 8 OF 19  
 NOTES LEU DATE 5/28/20 ROUTE SR 25  
 H.C. O'DONNELL WEATHER CLOUDY COUNTY WOOD  
 R.C. AUBLE TEMP. 75° TOWNSHIP PERRYSBURG  
           RHOADES SECTION 30  
 DWG BY RHOADES PID 102808 T 6 N R 11 E

TYPE MONUMENT MAG/WASHER  
 ON SURFACE ~~BELOW~~ ON \_\_\_\_\_  
 OFFSET CL PAVEMENT 4.7' LT : ~~RT~~  
6.5' TO LT EDGE PAVEMENT  
 STATION: 1005+58.7



HORIZ.DATUM: NAD83 2011 GEOID: NAVD88 2012A  
 GRID: NORTHING: 671307.888 EASTING: 1655805.047

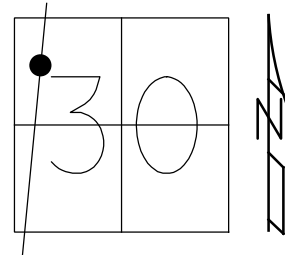
RECORD:  
 SET R.R.SPIKE  
 6/6/91, DJC  
 FD SM.R.R.SPIKE  
 5/14/03, MB  
 SET MAG NAIL  
 7/14/03, DCH  
 FD MAG/WASHER  
 REF 48  
 10/27/15, JFO  
 FD MAG/WASHER  
 REF 48  
 2/27/19, JFO  
 SET MAG/WASHER  
 10/16/20, JFO



O.D.O.T. DISTRICT 2 SURVEY OFFICE (USE ONLY)

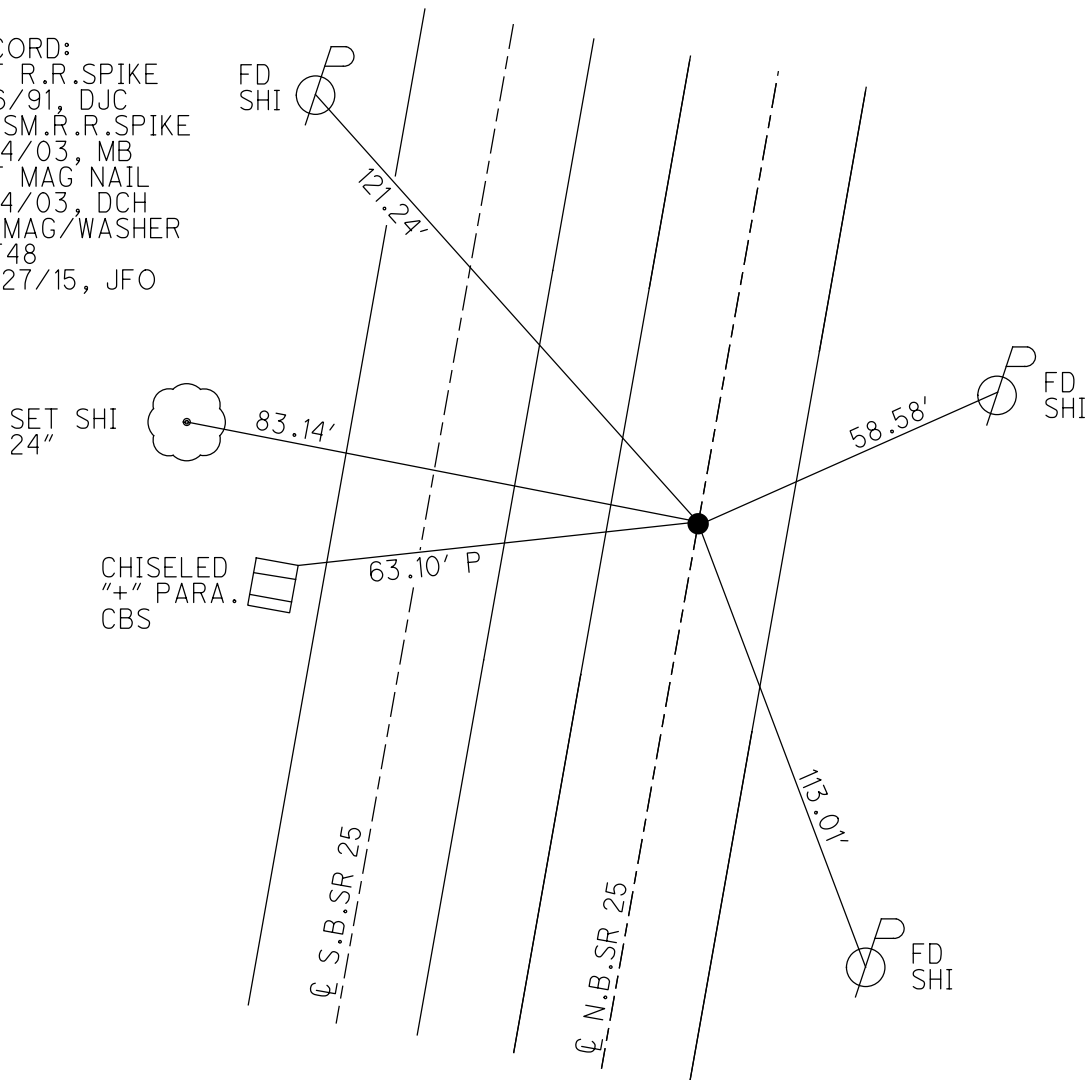
PERSONNEL \_\_\_\_\_ REFERENCE NO. 48 SHEET 2 OF 13  
 NOTES BARNHISEL DATE 5/14/03 ROUTE SR 25  
 H.C. CANTERBURY WEATHER CLEAR COUNTY WOOD  
 R.C. RYALL TEMP. 65° TOWNSHIP PERRYSBURG  
           HOMAN, GLASS SECTION 30  
 DWG BY RHOADES PID 102808 T 6 N R 11 E

TYPE MONUMENT SM.R.R.SPIKE  
 ON SURFACE - ~~BELOW~~ ON  
 OFFSET  $\varnothing$  PAVEMENT 4.7' LT : ~~RT~~  
6.5' TO LT EDGE PAVEMENT  
 STATION: 994+01



HORZ.DATUM: NAD83 2011 GEOID: NAVD88 2012A  
 GRID: NORTHING: 671307.888 EASTING: 1655805.047

RECORD:  
 SET R.R.SPIKE  
 6/6/91, DJC  
 FD SM.R.R.SPIKE  
 5/14/03, MB  
 SET MAG NAIL  
 7/14/03, DCH  
 FD MAG/WASHER  
 REF48  
 10/27/15, JFO



O.D.O.T. DISTRICT 2 SURVEY OFFICE

11 of 12

PERSONNEL

REFERENCE NO. 48

SHEET 8 OF 29

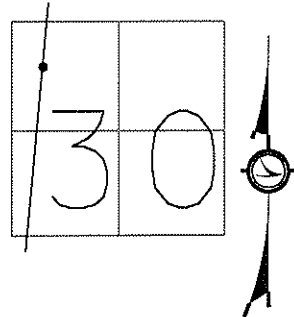
NOTES BARNHISEL  
 H.C. CANTERBURY  
 R.C. RYALL  
HOMAN  
GLASS

DATE 5/14/03  
 WEATHER CLEAR  
 TEMP. +65°

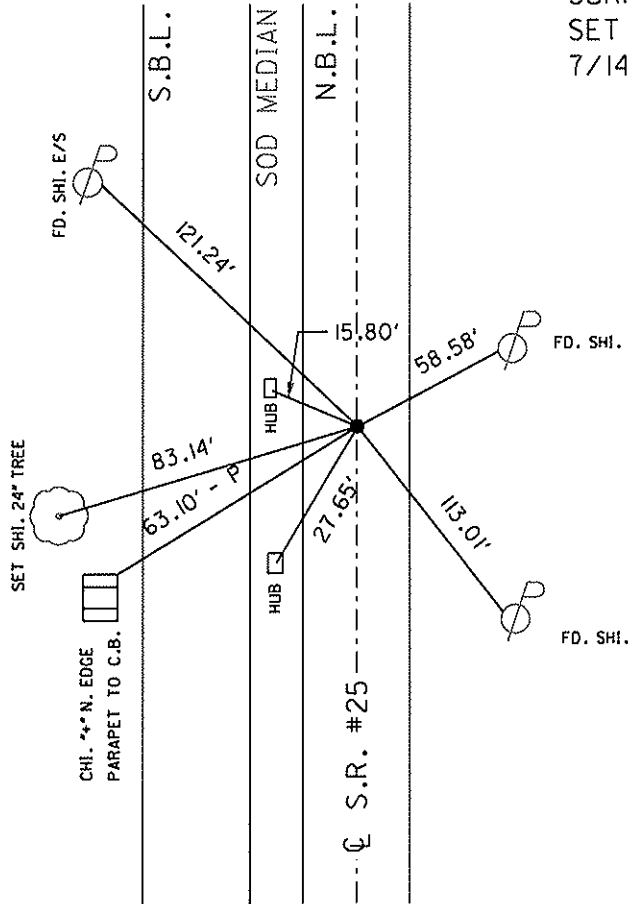
ROUTE S.R. #25  
 COUNTY WOOD  
 TOWNSHIP PERRYSBUR  
 SECTION 30  
Town R11E

TYPE MONUMENT SM. RR SPK.  
 ON SURFACE ~~-BELOW~~ YES

LEFT - ~~C~~ PAVT RIGHT 4.7  
6.5 TO LT EDGE PAVEMENT  
 S.L.M. 994+01



SET SM. R.R. SPK. TO  
 SURFACE 6/6/91 DJC  
 SET MAG NAIL  
 7/14/03 DCH



# O.D.O.T. DISTRICT 2 SURVEY OFFICE

PERSONNEL \_\_\_\_\_

REFERENCE NO. 48

SHEET 8 OF 29

NOTES 1. Stone

H.C. D. Curtis

R.C. J. Householder

DATE 10 April 91

WEATHER Cloud

TEMP. 38.0

ROUTE SR#25

COUNTY Wood

TOWNSHIP Perrysburg

SECTION 30

T. \_\_\_\_\_ R. \_\_\_\_\_

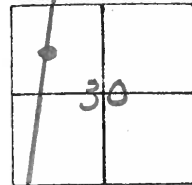
TYPE MONUMENT 5m. RR Spk.

ON SURFACE - BELOW \_\_\_\_\_

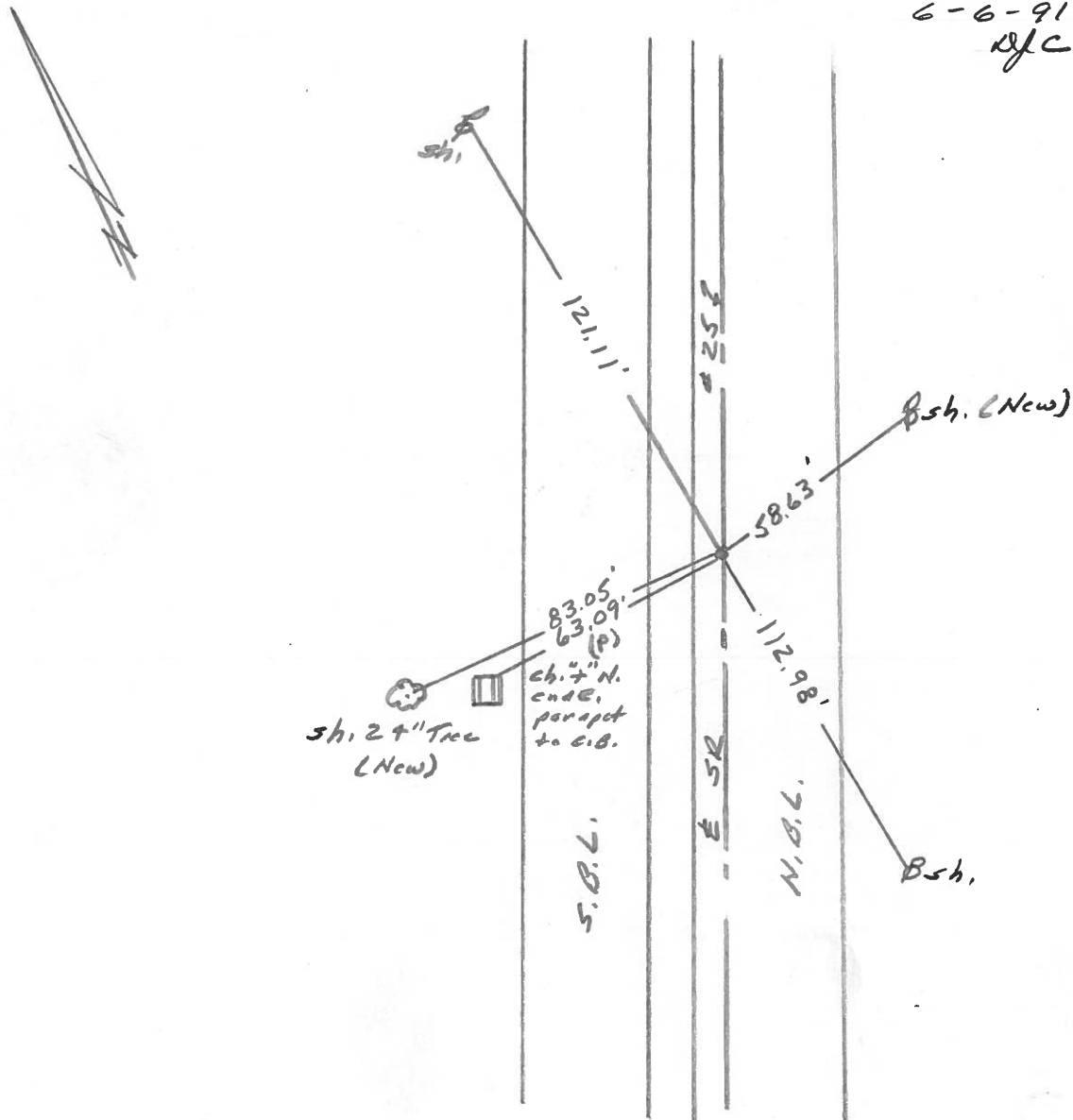
LEFT- & PAV'T. - RIGHT \_\_\_\_\_

TO \_\_\_\_\_ EDGE PAVEMENT

S.L.M. 994+01



SET SM. R.R. SPK. TO SURFACE  
6-6-91  
DJC



County WOOD S.R. 25

Date JUNE 3, 83

Township Perrysburg

Weather Rain

Section 30

Temp. +60°

TZN, RILE

Personnel HOFFMAN

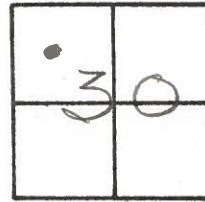
OLD # 277

Loehrke

Householder

BARNHART

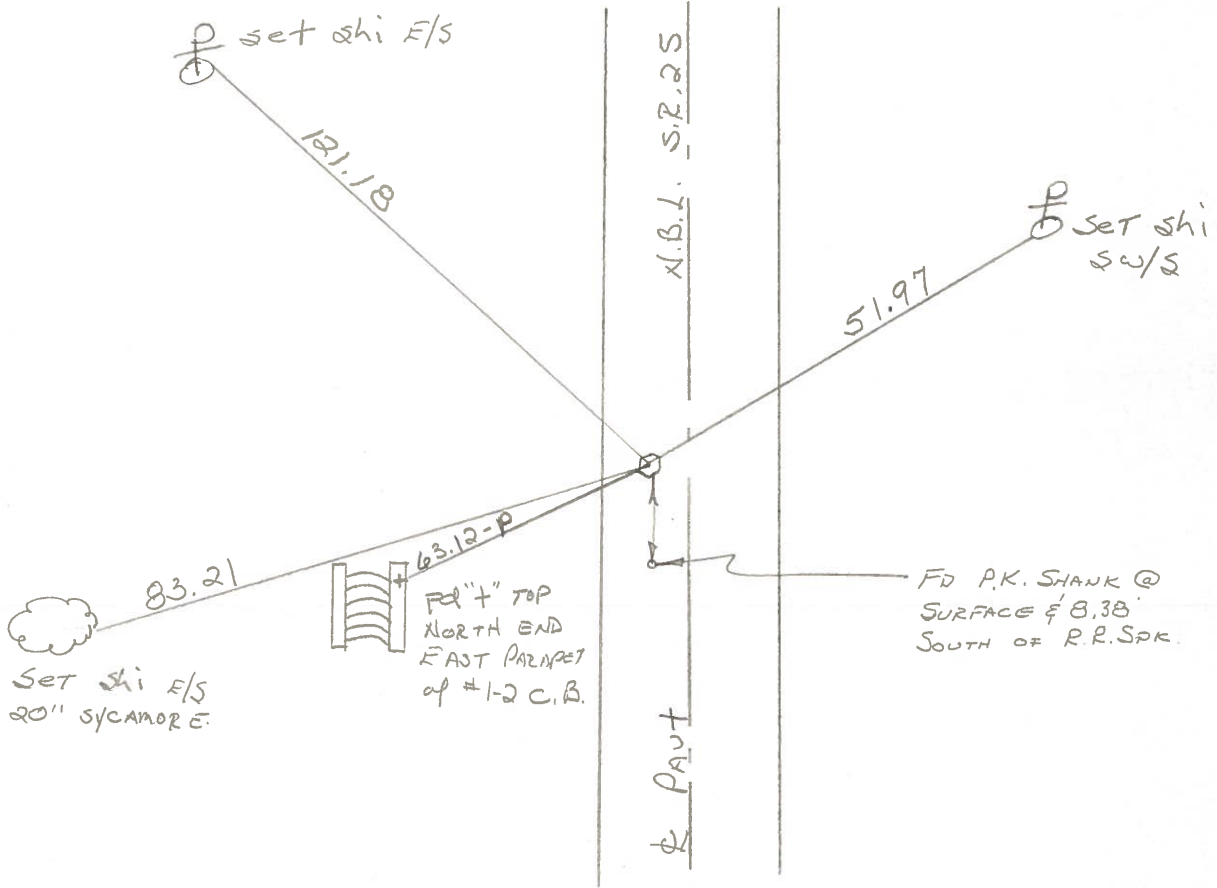
48



Fd R.R. SPK 0.55' Below surface  
5.0' W. of & part N.B.L. SR 25  
5.7' TO W.E.P. of N.B.L.

Project sta ± 994 + 37.5

SET SMALL R.R. SPK.  
B-5-83 S.W.H.



PERSONNEL TITLE PERSONNEL TITLE

COUNTY Wood

DATE 3-24-60

S. R. U.S. #25

WEATHER

SEC.

TEMP.

DESCRIPTION

Mobera Mon. Raised Grease

JOB NO.

LEFT

CENTER LINE

RIGHT

<p>Sta. 339+04.60  <math>\Delta = 0^\circ 15' R</math>. <u>mon-set.</u>                      N. edge Drive to Midway                      Rest. # Nite Club                      #273</p>		<p>Shiner Guard Rail Post W. 13.04                      Shiner Guard Rail Post N.W. 21.21                      N.E. to shiner in 24" apple 62.24                      E. to shiner in 24" apple 115.95                      S.E. to shiner in 24" stump 61.73                      N.E. to x-in Sand pump island 75.13                      N.E. to shiner in P.P. 53.11                      Shiner in Guard Rail Post S.W. 22.99</p>
<p>Sta. 364+30.30  <math>\Delta = 0^\circ - 00'</math>  <u>Set mon.</u>                      (45) #274</p>	<p><u>Oritt Rd.</u></p>	<p>S.E. Shiner P. Pole 46.6                      N.E. to shiner in 30" Ash 61.92                      S.W. to x-on S.E. cor. top #2-6CB, 46.0                      N.W. to shiner in A<sup>n</sup> Post 71.38                      Face iron cor post 3' up N.E. 45.15                      W. to shiner 1' W. of E. edge Pav't                      S. bound lane 26.92</p>
<p>Sta. 391+72.19  <math>\Delta = 0^\circ - 03' R</math>. <u>mon.</u>                      (46) #275</p>	<p><u>REITZ Rd</u></p>	<p>W. N.W. to x-on top Sand E. curb                      #1-2CB. 67.74                      N.W. to x-on top S.E. cor. #2-6CB, 48.0                      W.S.W. to x-on top Sand Conc Hdwl. 94.                      S.W. to x-on top S.E. cor. #2-6CB, 43.                      Shiner P. Pole N.E. 66.7                      Face I. Rope sign, S.E. 3' above Ground                      W. to shiner 1' W. of E. edge Pav't S.B. lane 27.7</p>
<p>Sta. 418+16.53  <math>\Delta = 0^\circ - 00'</math> <u>Set mon.</u>                      Front of Frank Fox Barn                      (47) #276</p>		<p>N.W. to shiner in fence post 86.3                      S.W. to shiner in Anchor post. 87.2                      S.E. to shiner in 20" maple 62.25                      N.E. to shiner in P.P. 43.56                      N.E. to shiner in cor. barn <sup>120.39</sup> 720.45                      S.E. to shiner in cor. barn <sup>100.39</sup> 704.50                      Shiner in 24" Maple 62.26</p>
<p>Sta. 432+08.42  <math>\Delta = 0^\circ - 00'</math> R.P. Spike                      (48) #277</p>	<p><u>Did Not Find.</u>                      3-25-60</p>	<p>N.E. to shiner in 28" Apple 45.50                      S.E. to shiner in P.P. 80.03                      N.W. to shiner in T.P. 90.43                      S.W. to N.E. cor. #1-2CB, 63.15                      S.E. to shiner in P.P. 80.09                      N.E. to R.P. spk. in P.P. 60.44</p>