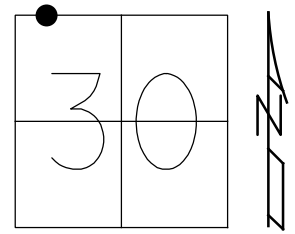


O.D.O.T. DISTRICT 2 SURVEY OFFICE (USE ONLY)

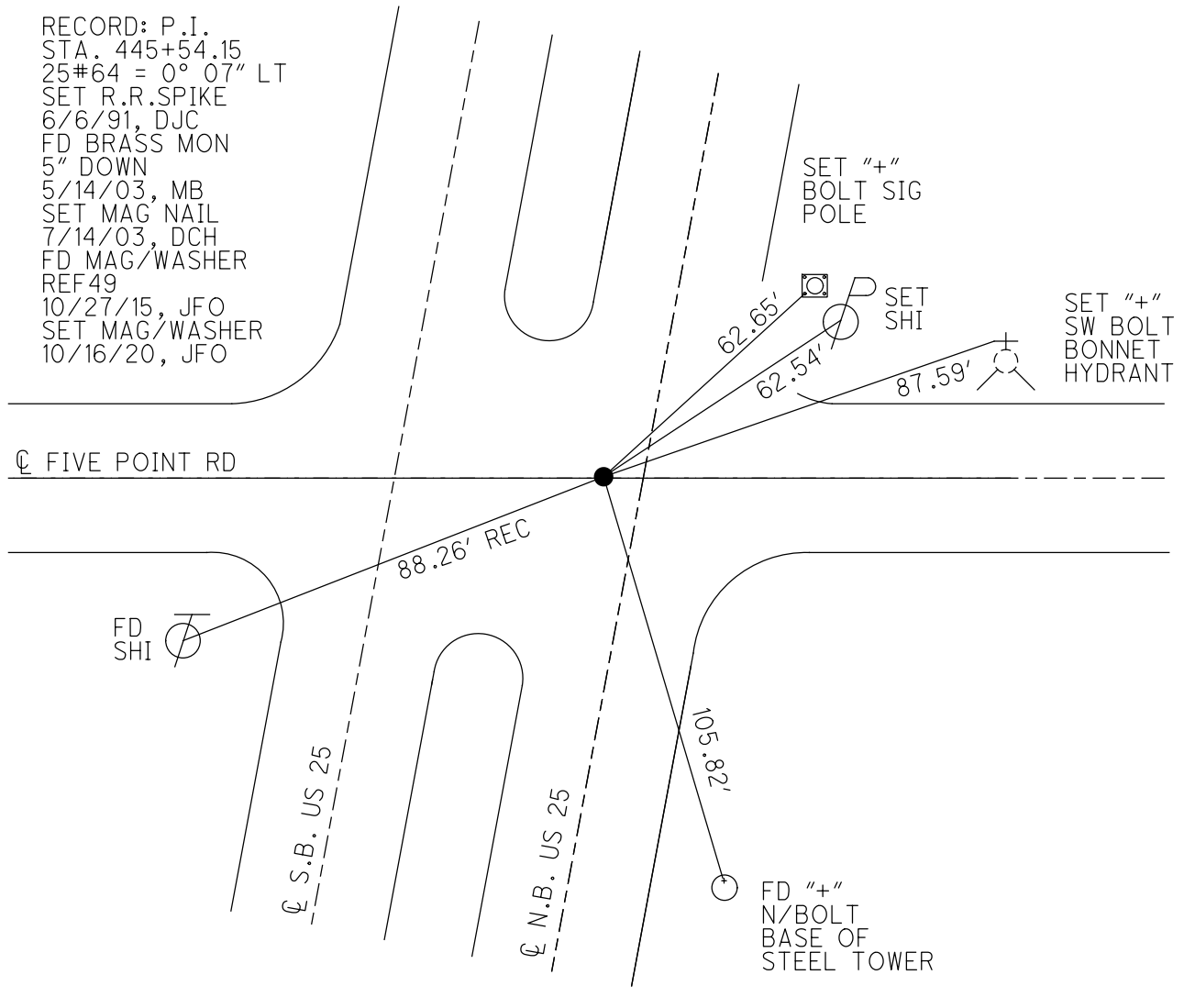
PERSONNEL _____ REFERENCE NO. 49 SHEET 9 OF 19
 NOTES LEU DATE 3/8/19 ROUTE SR 25
 H.C. O'DONNELL WEATHER SUNNY COUNTY WOOD
 R.C. LEU TEMP. 32° TOWNSHIP PERRYSBURG
 DWG BY RHOADES PID 102808 SECTION 30
 T 6 N R 11 E

TYPE MONUMENT BRASS MON. W/ DIMPLE
~~ON SURFACE~~ - BELOW 4"
 OFFSET \odot PAVEMENT 5.1' LT : ~~RT~~
6' TO LT EDGE PAVEMENT
 STATION: 1019+04



HORIZ.DATUM: NAD83 2011 GEOID: NAVD88 2012A
 GRID: NORTHING: 672635.541 EASTING: 1656021.981

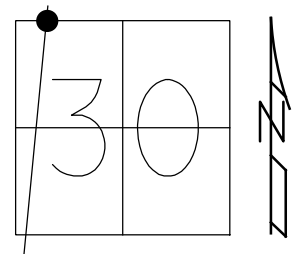
RECORD: P.I.
 STA. 445+54.15
 25#64 = 0° 07" LT
 SET R.R.SPIKE
 6/6/91, DJC
 FD BRASS MON
 5" DOWN
 5/14/03, MB
 SET MAG NAIL
 7/14/03, DCH
 FD MAG/WASHER
 REF 49
 10/27/15, JFO
 SET MAG/WASHER
 10/16/20, JFO



O.D.O.T. DISTRICT 2 SURVEY OFFICE (USE ONLY)

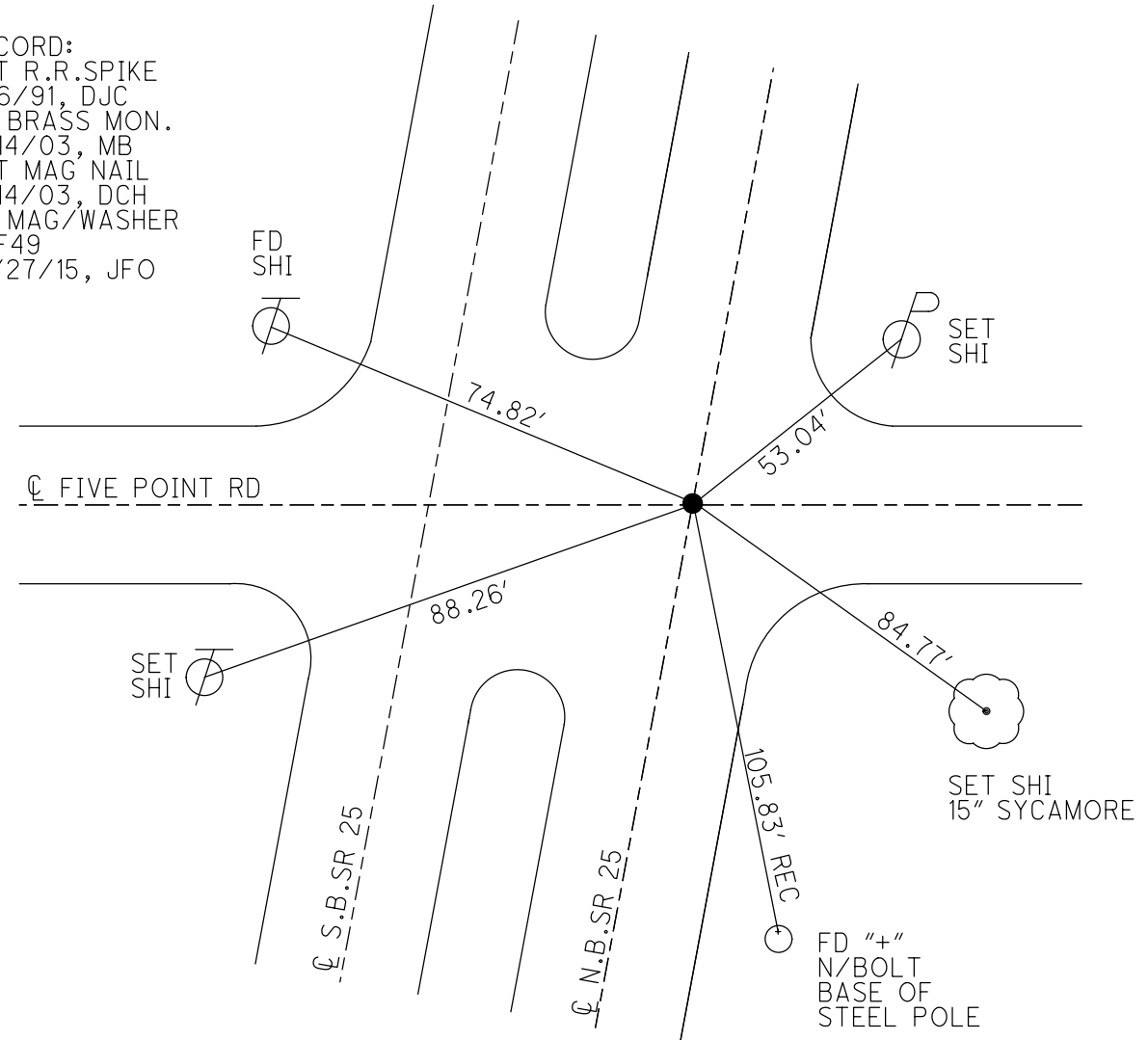
PERSONNEL _____ REFERENCE NO. 49 SHEET 3 OF 13
 NOTES BARNHISEL DATE 5/14/03 ROUTE SR 25
 H.C. CANTERBURY WEATHER CLEAR COUNTY WOOD
 R.C. RYALL TEMP. 65° TOWNSHIP PERRYSBURG
 _____ HOMAN, GLASS SECTION 30
 DWG BY RHOADES PID 102808 T 6 N R 11 E

TYPE MONUMENT BRASS MON.
~~ON SURFACE~~ - BELOW 5"
 OFFSET CL PAVEMENT 5.1' LT : ~~RT~~
6' TO LT EDGE PAVEMENT
 STATION: 1007+45



HORZ. DATUM: NAD83 2011 GEOID: NAVD88 2012A
 GRID: NORTHING: 672635.541 EASTING: 1656021.981

RECORD:
 SET R.R. SPIKE
 6/6/91, DJC
 FD BRASS MON.
 5/14/03, MB
 SET MAG NAIL
 7/14/03, DCH
 FD MAG/WASHER
 REF49
 10/27/15, JFO



O.D.O.T. DISTRICT 2 SURVEY OFFICE

12 of 12

PERSONNEL

REFERENCE NO. 49

SHEET 9 OF 29

NOTES BARNHISEL

DATE 5/14/03

ROUTE SR #25

H.C. CANTERBURY

WEATHER CLEAR

COUNTY WOOD

R.C. RYALL

TEMP. +65°

TOWNSHIP PERRYSBUR

HOMAN

SECTION 30

GLASS

T 6 N R 11 E

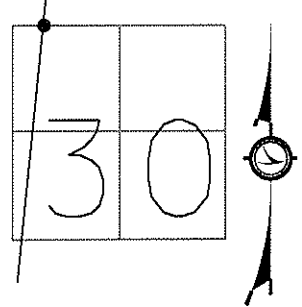
TYPE MONUMENT BRASS MON.

~~ON SURFACE~~ - BELOW 5"

LEFT - ~~C~~ PAWT ~~RIGHT~~ 5.1'

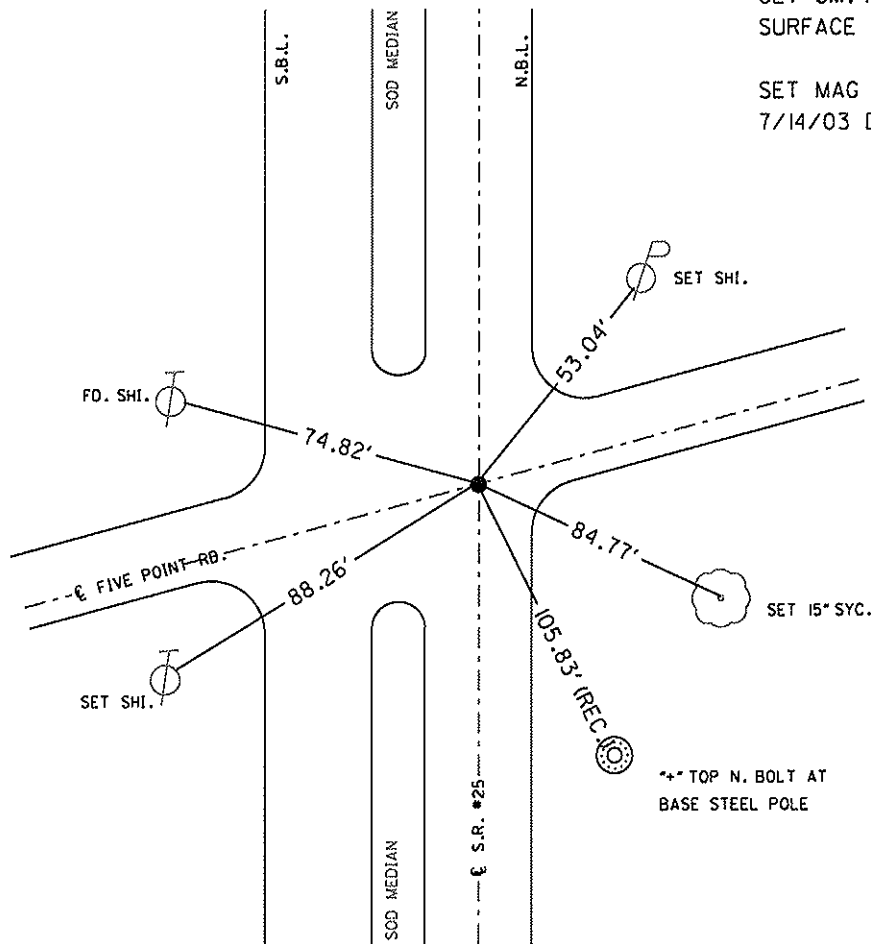
6.0 TO LT. EDGE PAVEMENT

S.L.M. 1007+45



SET SM. R.R. SPK. TO SURFACE 6-6-91 D.J.C.

SET MAG NAIL 7/14/03 DCH



*+ TOP N. BOLT AT BASE STEEL POLE

O.D.O.T. DISTRICT 2 SURVEY OFFICE

PERSONNEL _____

REFERENCE NO. 49

SHEET 9 OF 29

NOTES 1. Stone

H.C. D. Curtis

R.C. J. Householder

DATE 10 April 91

WEATHER Cold

TEMP. 38°

ROUTE SR #25

COUNTY Wood

TOWNSHIP Perryburg

SECTION 30

T. _____ R. _____

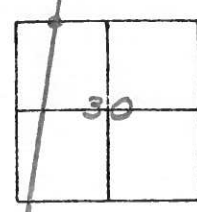
TYPE MONUMENT Sm. RR spike

ON SURFACE - BELOW _____

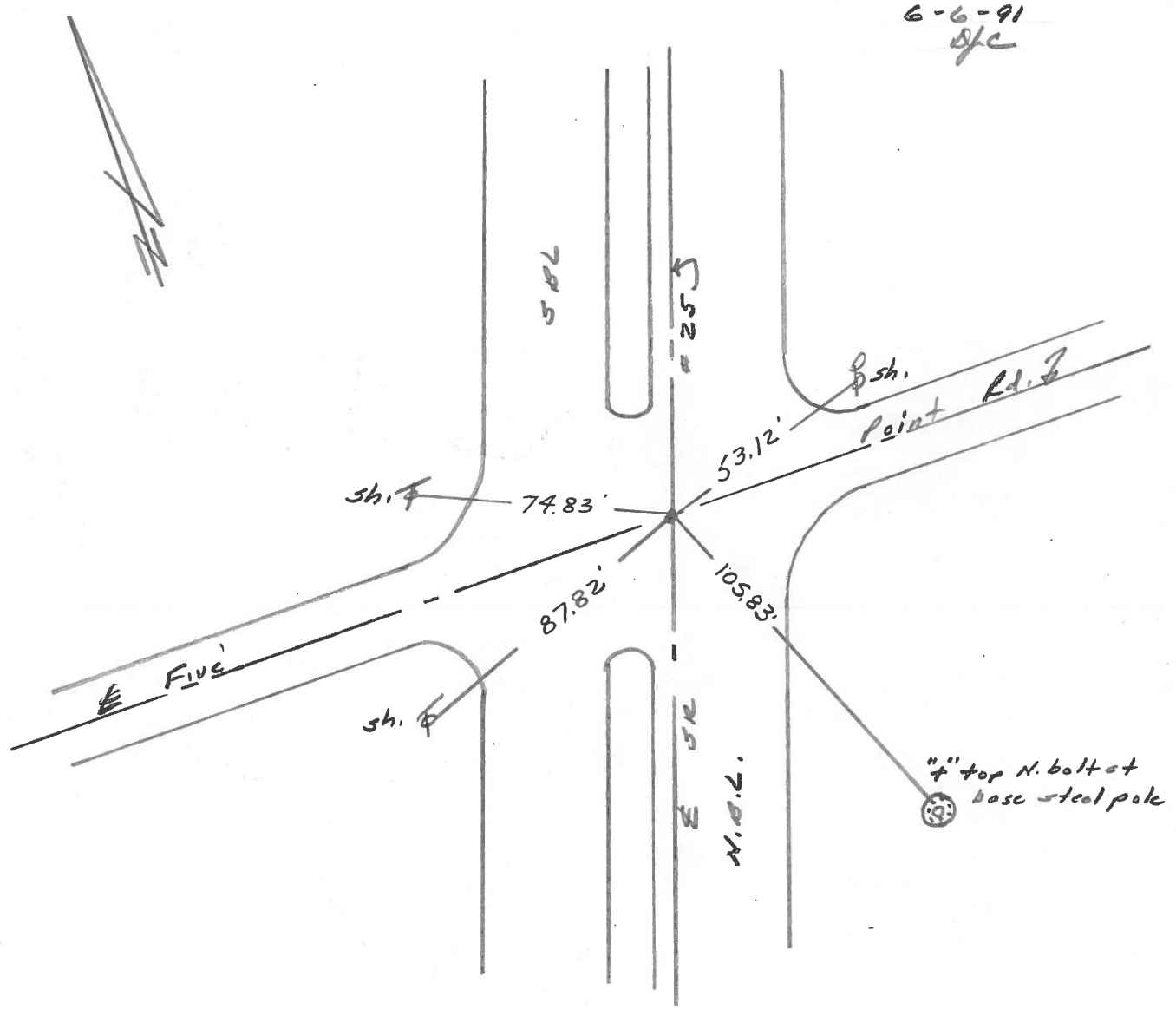
LEFT - & PAV'T. - RIGHT _____

_____ TO _____ EDGE PAVEMENT

S.L.M. 1007 + 45



SET SM. R. R. SPIKE TO SURFACE
6-6-91
SJC



County Wood S.R. 25

Date 11-19-81

Township Perrysburg

Weather cloudy

Section 30

Temp. +45°

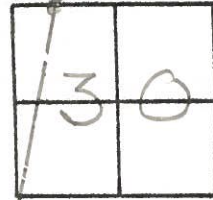
T_{LN}, R_{LE}

Personnel Hoffman

#49

Householder

Loehrke

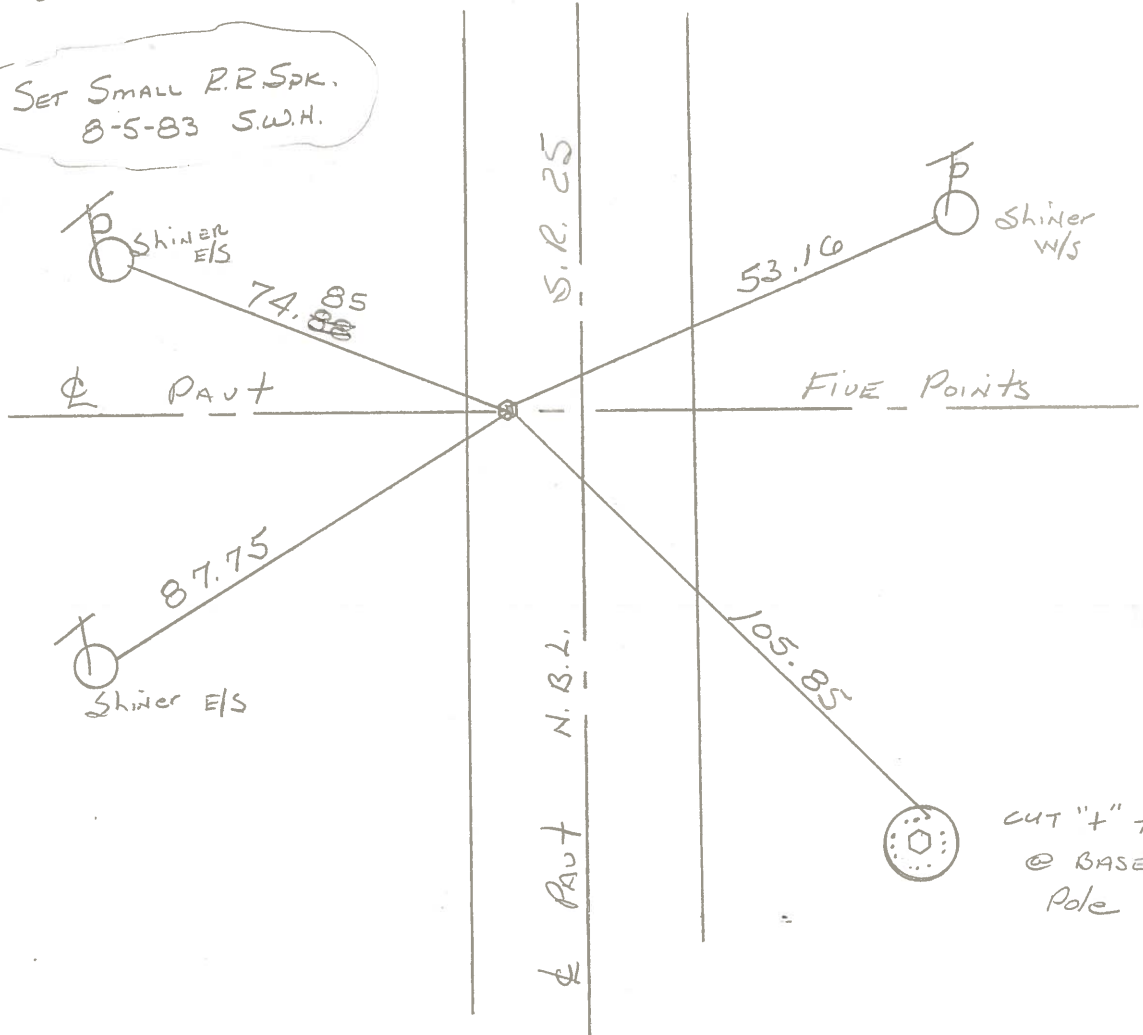


Fd. BRASS MON. 1 1/4" Below surface
5.15' W. of & PAUT, N.B.L. SR. 25
@ & PAUT Five Points Road

Project sta. ± 1007+83

Sta. 445+53.92
Δ = 0°-07' LT. Rec.

Set Small R.R. Spk.
8-5-83 S.W.H.



CUT "+" TOP - N. B.T.
@ BASE of steel
Pole

PERSONNEL TITLE PERSONNEL TITLE

COUNTY Wood

DATE 3-25-60

S. R. U.S. #25

WEATHER

SEC.

TEMP.

DESCRIPTION

Mobara Mon. Raised & Greased

JOB NO.

LEFT	CENTER LINE	RIGHT
Sta. 445 + 53.92 $\Delta = 0^\circ 07' Lt.$ Set mon. Five Point Rd. #278	plumbed	shiner in P. Pole N.W. 74.78' shiner in P. Pole N.E. 65.33' W.S.W. to X on top N. end E. curb #1-2 C.B. 71.09' W.N.W. to X on top S. end E curb. #1-2 C.B. 62.79' N.W. to X on top S.E. cor. top #2-6 C.B. 33.53' plumbed S.W. to X on top S.E. cor. top #2-6 C.B. 43.09' S.W. to shiner in T.P. 83.25' 86.94'
Sta 499 + 84.69 $\Delta = 0^\circ 14' Lt.$ Set mon. Poachton Rd. #279		N.E. To shiner in P. Pole 53.37' S.W. to X on top S.E. cor #2-6 C.B. 31.66' N.W. to X on S-side top spec. inlet 48.69' S.E. to shiner in P.P. 32.53' S.E. to shiner in P.P. 51.75' N.W. to shiner in T.P. 92.60' S.W. to shiner in P. Pole 74.13'
Sta 520 + 08.70 $\Delta = 0^\circ 00'$ Set mon. Jefferson St. East. #280		N.E. to shiner in W. Post of sign 42.63' E. to shiner in Apple 35.54' S.E. to shiner in P.P. 28.25' N.N.W. to X on top S. side spec. inlet 35.15' S.E. to shiner P. Pole 44.06' S.S.E. to shiner P. Pole 42.06'
Sta. 534 + 05.40 $\Delta = 0^\circ 16' Lt.$ Set mon. 117 Front Paul Eckel Res. #281		S.E. to shiner in 6" maple 55.25' N.E. to shiner in 8" maple 57.00' S.W. to N.E. cor brick post 95.19' N.W. to S.E. cor brick post 88.00' E. to shiner in 10" Maple 48.86' S.E. To shiner P. Pole 73.63'

49

50

51