

O.D.O.T. DISTRICT 2 SURVEY OFFICE (USE ONLY)

PERSONNEL

REFERENCE NO. 50

SHEET 10 OF 19

NOTES STONE DATE 4/10/91
 H.C. CURTIS WEATHER COLD
 R.C. HOUSEHOLDER TEMP. 38°

ROUTE SR 25
 COUNTY WOOD
 TOWNSHIP PERRYSBURG
 SECTION 19
 T 6 N R 11 E

DWG BY RHOADES PID 102808

TYPE MONUMENT SM.R.R.SPIKE

ON SURFACE - ~~BELOW~~ ON

OFFSET 0 PAVEMENT - LT : RT
- TO - EDGE PAVEMENT

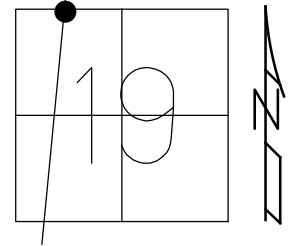
STATION: 1073+33.51

HORZ.DATUM: NAD83 2011

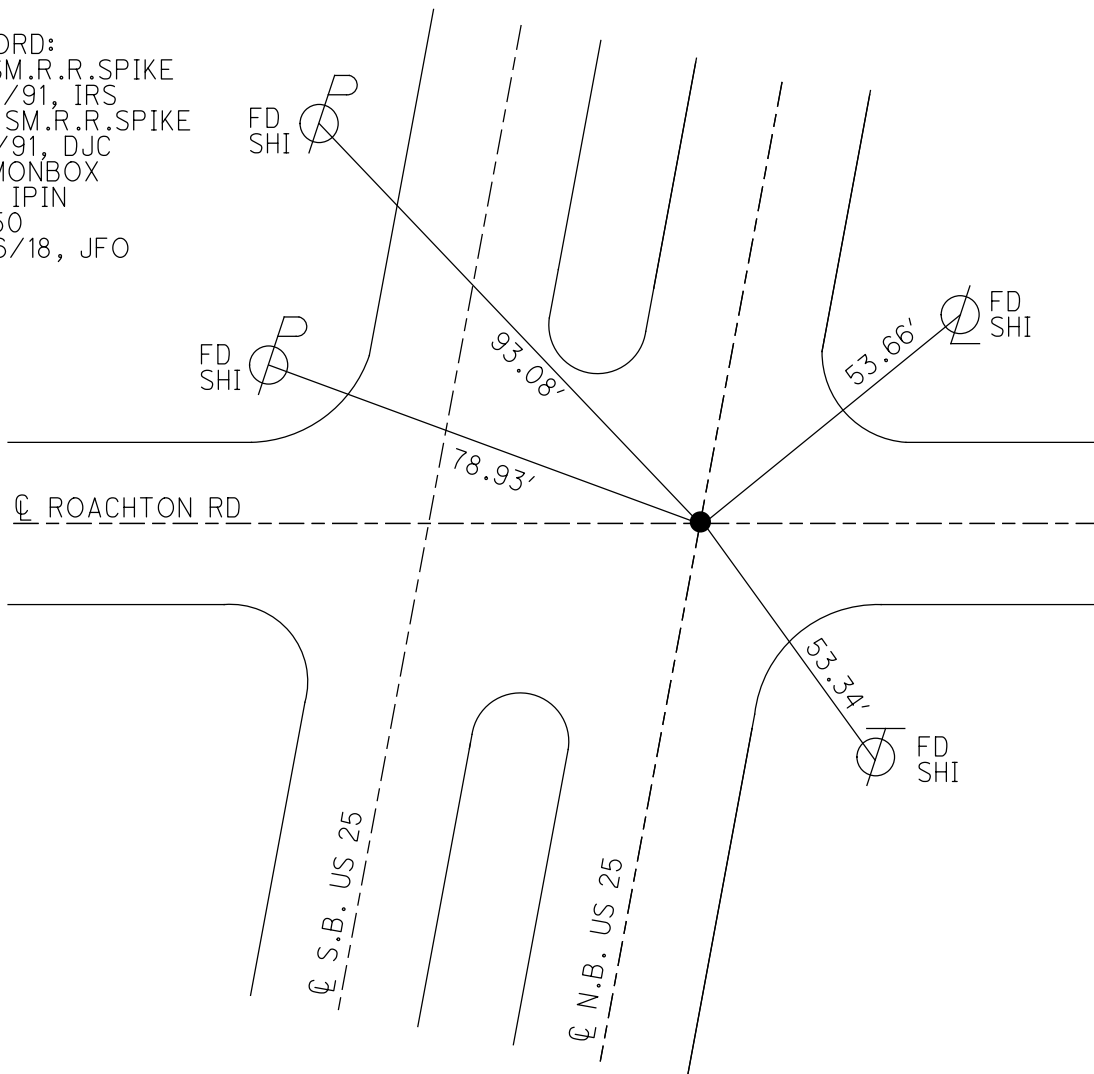
GEOID: NAVD88 2012A

GRID: NORTHING: 677995.994

EASTING: 1656885.364



RECORD:
 FD SM.R.R.SPIKE
 4/10/91, IRS
 SET SM.R.R.SPIKE
 6/6/91, DJC
 FD MONBOX
 W/1" IPIN
 REF50
 3/26/18, JFO



O.D.O.T. DISTRICT 2 SURVEY OFFICE (USE ONLY)

PERSONNEL _____

REFERENCE NO. 50

SHEET 4 OF 13

NOTES STONE

DATE 4/10/91

ROUTE SR 25

H.C. CURTIS

WEATHER COLD

COUNTY WOOD

R.C. HOUSEHOLDER

TEMP. 38°

TOWNSHIP PERRYSBURG

DWG BY RHOADES PID 102808

SECTION 19

T 6 N R 11 E

TYPE MONUMENT SM.R.R.SPIKE

ON SURFACE - ~~BELOW~~ ON

OFFSET \varnothing PAVEMENT - LT : RT

- TO - EDGE PAVEMENT

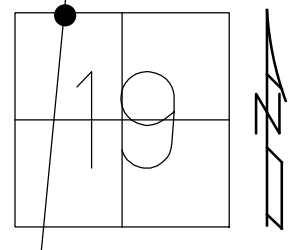
STATION: 1061+72

HORZ.DATUM: NAD83 2011

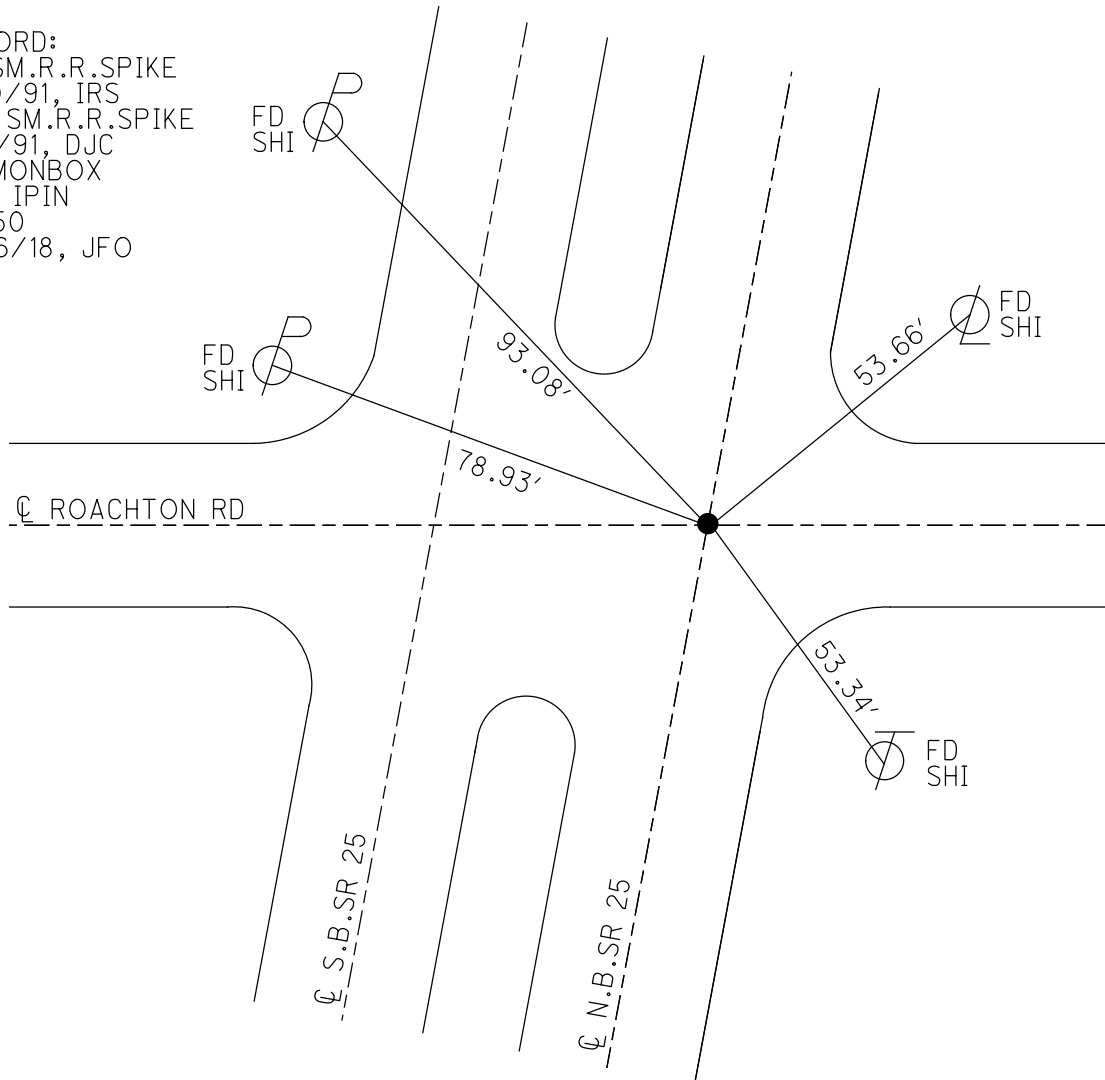
GEOID: NAVD88 2012A

GRID: NORTHING: 677995.994

EASTING: 1656885.364



RECORD:
 FD SM.R.R.SPIKE
 4/10/91, IRS
 SET SM.R.R.SPIKE
 6/6/91, DJC
 FD MONBOX
 W/1" IPIN
 REF50
 3/26/18, JFO



O.D.O.T. DISTRICT 2 SURVEY OFFICE

PERSONNEL

REFERENCE NO. 50

SHEET 10 OF 29

NOTES 1. Stone

H.C. D. Curtis

R.C. T. Hauschalter

DATE 10 April '91

WEATHER Cold

TEMP. 30°

ROUTE SR # 25

COUNTY Wood

TOWNSHIP Perryburg

SECTION 19

T R

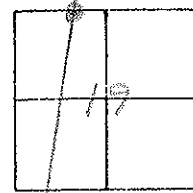
TYPE MONUMENT 500 R.R. Spk.

ON SURFACE - BELOW

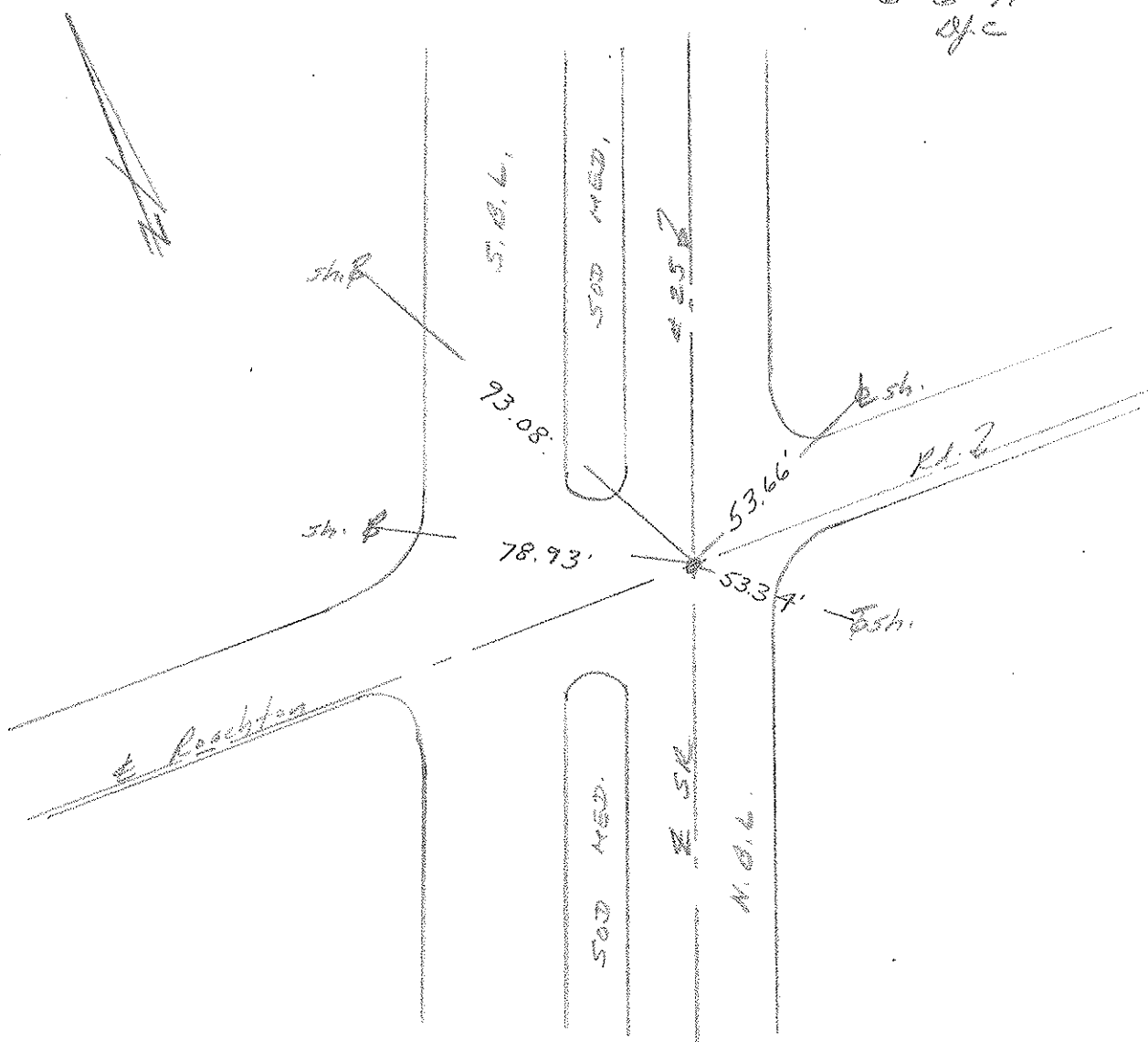
LEFT - & PAV'T. - RIGHT

TO EDGE PAVEMENT

S.L.M. 10617 72



SET SM. R. R. SPK. TO SURFACE
6-6-91
OJC



County Wood S.R. 25

Date 11-20-81

Township Perrysburg

Weather Cloudy

Section 19

Temp. +35°

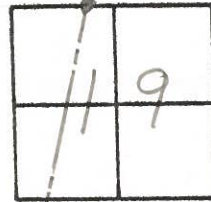
TZN, RLE

Personnel Hoffman

Householder

Lochrke

50

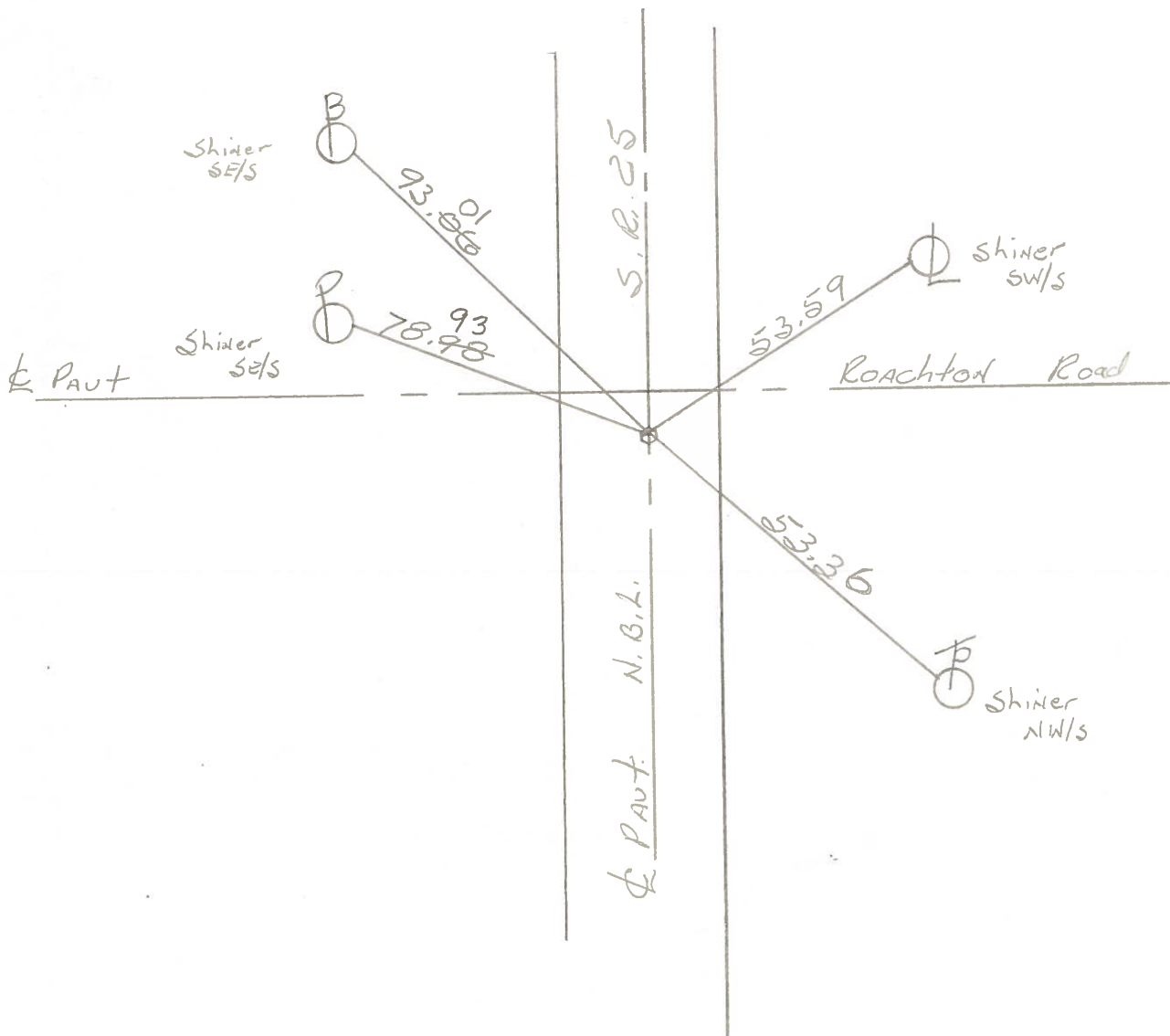


Fd. Brass Mon. 1" Below Surface
on $\frac{1}{2}$ PAUT N.B.L. SR25
3.5' S. of $\frac{1}{2}$ PAUT. Roachtod

Project sta. $\pm 1062 + 13$

STA. 499 + 84.69 Rec.
 $\Delta = 0^\circ - 14' Lt.$

SET Small R.R. SPK.
8-5-83 S.W.H.



PERSONNEL TITLE PERSONNEL TITLE

COUNTY Wood

DATE 3-25-60

S. R. U.S. #25

WEATHER

SEC.

TEMP.

DESCRIPTION

Mohara Mon. Raised & Greased

JOB NO.

LEFT

CENTER LINE

RIGHT

DESCRIPTION	LEFT	CENTER LINE	RIGHT	JOB NO.
Sta. 445 + 53.92 Δ = 0° 07' Lt. Set man. Five Point Rd.	#278	plumbed	shiner in P. Pole N.W. 74.78 shiner in P. Pole N.E. 65.33 W.S.W. to X on top N. end E. curb #1-2 C.B. 71.09 W.N.W. to X on top S. end E curb. #1-2 C.B. 62.79 N.W. to X on top S.E. cor. top #2-6 C.B. 33.53 S.W. to X on top S.E. cor. top #2-6 C.B. 43.09 S.W. to shiner in T.P. 83.25 86.94	
Sta 499 + 84.69 Δ = 0° 14' Lt. Set man. Poachton Rd.	#279	plumbed	N.E. To shiner in P. Pole 53.37 S.W. to X on top S.E. cor #2-6 C.B. 31.66 N.W. to X on S. side top spec. inlet 48.65 S.E. to shiner in P.P. 32.53 S.E. to shiner in P.P. 51.72 N.W. to shiner in T.P. 92.60 S.W. to shiner in P. Pole 74.13	
Sta 520 + 08.70 Δ = 0° 00' Set man. Jefferson St. East.	#280		N.E. to shiner in W. Post of sign 42.63 E. to shiner in Apple 35.54 S.E. to shiner in P.P. 28.25 N.W. to X on top S. side spec. inlet 35.15 S.E. to shiner P. Pole 44.06 S.S.E. to shiner P. Pole 42.06	
Sta. 534 + 05.40 Δ = 0° 16' Lt. Set man. 17 Front Paul Eckel Res.	#281		S.E. to shiner in 6" maple 55.2 N.E. to shiner in 8" maple 57.00 S.W. to N.E. cor brick post 95.19 N.W. to S.E. cor brick post 88.00 E. to shiner in 10" Maple 48.86 S.E. To shiner P. Pole 73.63	