

O.D.O.T. DISTRICT 2 SURVEY OFFICE (USE ONLY)

PERSONNEL

REFERENCE NO. 50 A

SHEET 5 OF 13

NOTES RHOADES  
 H.C. O'DONNELL  
 R.C. SEAMAN

DATE 3/26/18  
 WEATHER SUNNY  
 TEMP. 31°

ROUTE SR 25  
 COUNTY WOOD  
 TOWNSHIP PERRYSBURG  
 SECTION 18  
 T 6 N R 11 E

DWG BY RHOADES PID 102808

TYPE MONUMENT MAG/WASHER

ON SURFACE - ~~BELOW~~ ON

OFFSET ☉ PAVEMENT ON LT : RT  
- TO - EDGE PAVEMENT

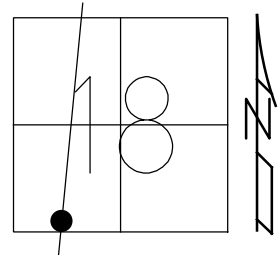
STATION: 1064+33

HORIZ.DATUM: NAD83 2011

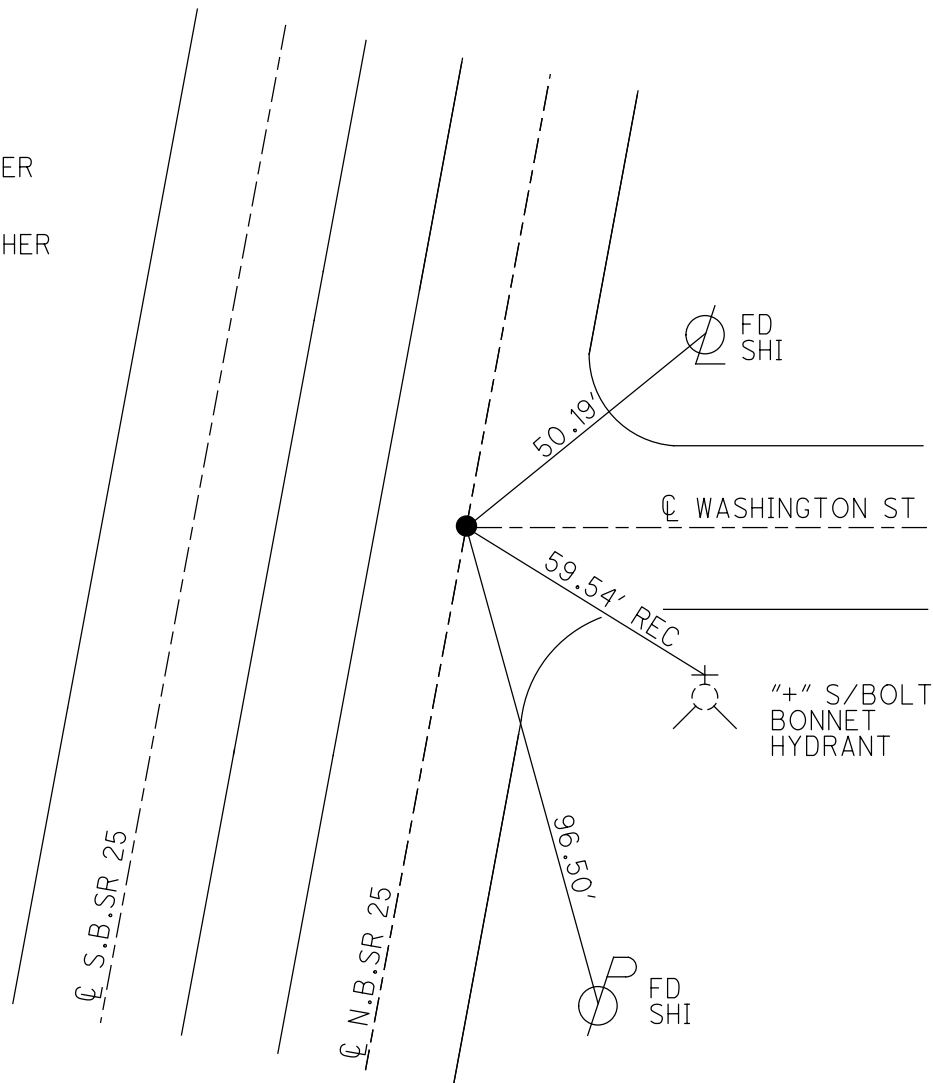
GEOID: NAVD88 2012A

GRID: NORTHING: 679251.419

EASTING: 1656925.695



RECORD:  
 FD P.K.NAIL  
 4/10/91, IRS  
 SET P.K.NAIL  
 6/6/91, DJC  
 FD MAG/WASHER  
 REFA50  
 3/26/18, JFO  
 SET MAG/WASHER  
 2/4/19, JFO



# O.D.O.T. DISTRICT 2 SURVEY OFFICE

PERSONNEL

REFERENCE NO. 50-A

SHEET 11 OF 29

NOTES 1. Stone

H.C. Dr. Curtis

R.C. J. Householder

DATE 10 April 91

WEATHER Cloud

TEMP. 58°

ROUTE SP# 25

COUNTY Wood

TOWNSHIP Prossburg

SECTION 18

T     R    

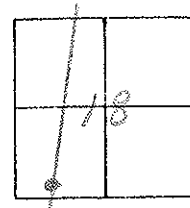
TYPE MONUMENT Pk. Nail

ON SURFACE - BELOW Surface

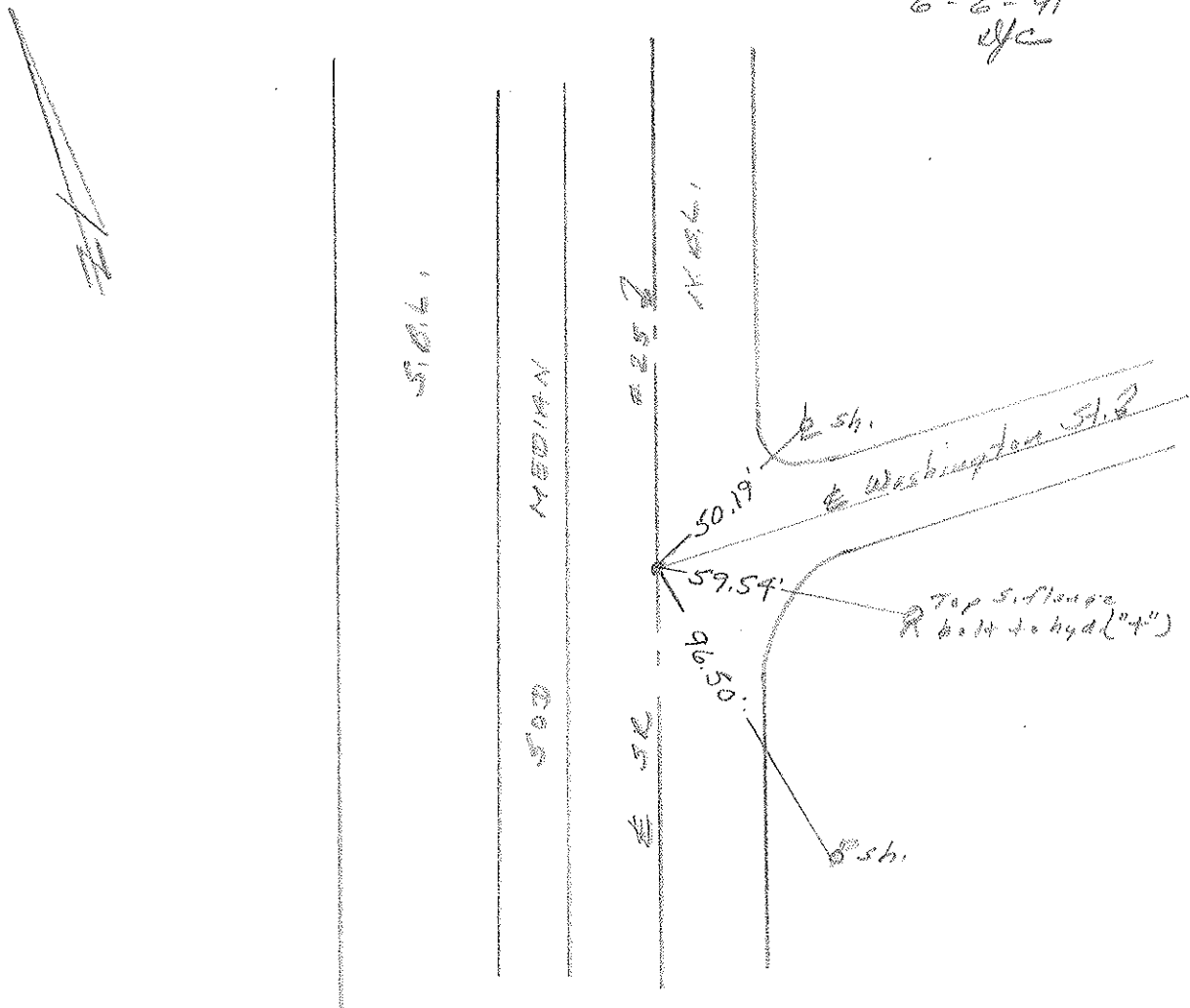
LEFT - & PAW'T. - RIGHT    

TO     EDGE PAVEMENT

S.L.M. 1064 + 33



SET P.K. NAIL TO SURFACE  
6-6-91  
EJC



ODOT. DISTRICT 2 SURVEY OFFICE

SHEET \_\_\_\_\_ OF \_\_\_\_\_

County Wood S.R. 25

Date 11-20-81

Township Perrysburg

Weather RAIN-SNOW

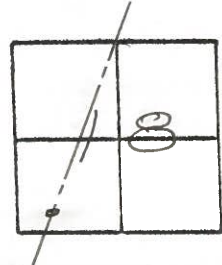
Section 18

Temp. +35°

TIN, RILE

Personnel HOFFMAN  
Householder  
Loehrke

50-A



Fd. small nail @ surface  
0.50 EAST of & PAUT SR 25 N.B.L.  
ON & PAUT Washington  
(Set by others)

Project Sta. ± 1064+71

SET P.K. NAIL  
8-5-83 S.W.H.

