

O.D.O.T. DISTRICT 2 SURVEY OFFICE (USE ONLY)

PERSONNEL

REFERENCE NO. 50 C

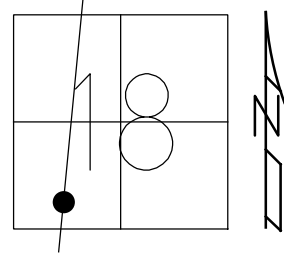
SHEET 7 OF 13

NOTES RHOADES DATE 3/26/18  
 H.C. O'DONNELL WEATHER SUNNY  
 R.C. SEAMAN TEMP. 35°

ROUTE SR 25  
 COUNTY WOOD  
 TOWNSHIP PERRYSBURG  
 SECTION 18  
 T 6 N R 11 E

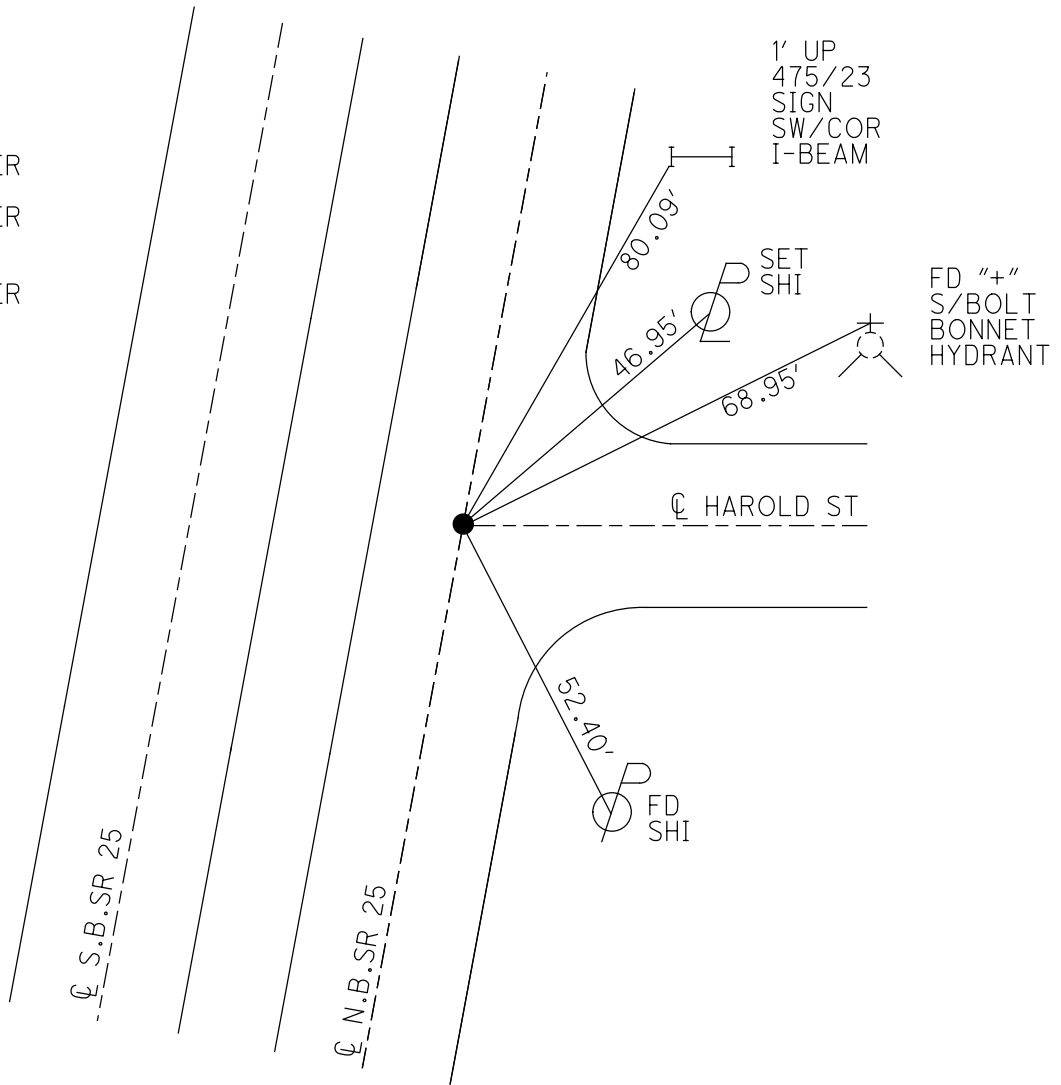
DWG BY RHOADES PID 102808

TYPE MONUMENT MAG/WASHER  
 ON SURFACE - ~~BELOW~~ ON \_\_\_\_\_  
 OFFSET  $\varnothing$  PAVEMENT ON \_\_\_\_\_ LT : RT  
 - TO - EDGE PAVEMENT  
 STATION: 1066+77



HORIZ.DATUM: NAD83 2011 GEOID: NAVD88 2012A  
 GRID: NORTHING: 678735.006 EASTING: 1657001.404

RECORD:  
 SET P.K.NAIL  
 6/6/91, DJC  
 FD P.K.NAIL  
 7/16/07, DCH  
 SET MAG/WASHER  
 11/13/07, SAH  
 SET MAG/WASHER  
 REFC50  
 3/26/18, JFO  
 SET MAG/WASHER  
 2/4/19, JFO

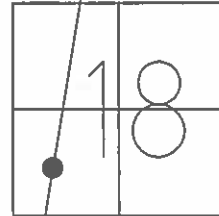


O.D.O.T. DISTRICT 2 SURVEY OFFICE (USE ONLY)

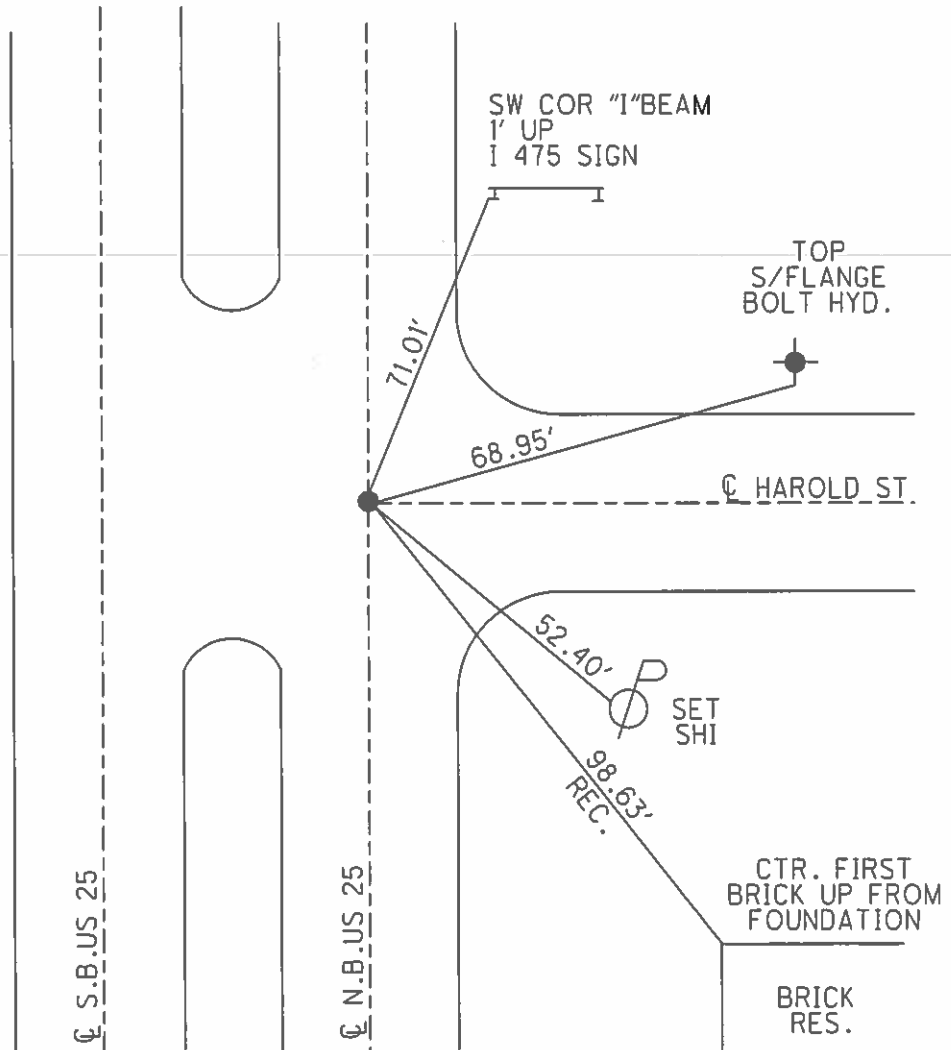
PERSONNEL \_\_\_\_\_ REFERENCE NO. 50 C SHEET 13 OF 29

NOTES HOMAN DATE 7/16/07 ROUTE US 25  
 H.C. HOMAN WEATHER CLOUDY COUNTY WOOD  
 R.C. VIETH TEMP. 75° TOWNSHIP PERRYSBURG  
 SECTION 18  
T 4 S R 11 E

TYPE MONUMENT P.K.NAIL  
 ON SURFACE - ~~BELOW~~ ON \_\_\_\_\_  
 LEFT - ☉ PAV'T - RIGHT ON \_\_\_\_\_  
 - TO - EDGE PAVEMENT  
 S.L.M. 1069+32  
 GPS NORTHING: 678735.39 EASTING: 1657001.46



RECORD:  
 SET P.K.NAIL  
 6-06-91  
 SET MAG/WASHER  
 11/13/07, SAH



# O.D.O.T. DISTRICT 2 SURVEY OFFICE

PERSONNEL

REFERENCE NO. 50-C

SHEET 13 OF 29

NOTES L. Stone

H.C. D. Curtis

R.C. J. Householder

DATE 10 April 91

WEATHER Cold

TEMP. 38°

ROUTE SR #25

COUNTY Wood

TOWNSHIP Perrysburg

SECTION 18

T      R     

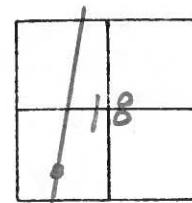
TYPE MONUMENT PK Nail

ON SURFACE - BELOW Surface

LEFT - & PAV'T. - RIGHT     

     TO      EDGE PAVEMENT

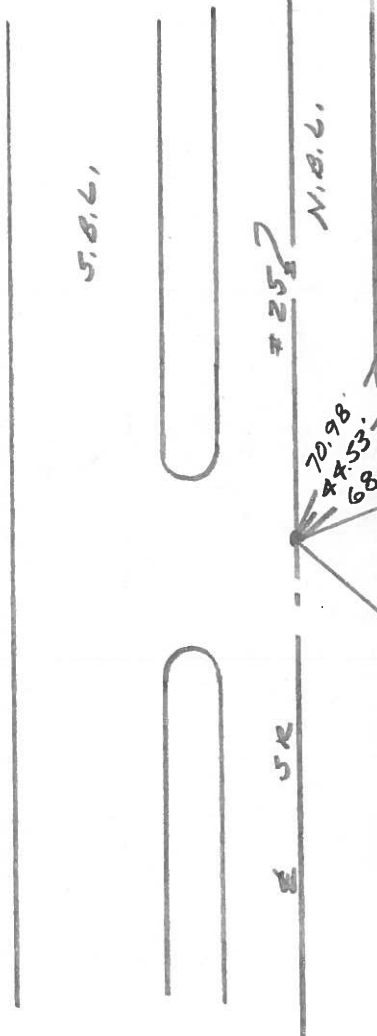
S.L.M. 1069+22



SET P.K. NAIL TO SURFACE

6-6-91

DJC



SW Cor. "I" beam (1' up)  
to 475 sign.  
Top S. Fl. bolt  
Hyd.

70.98'  
44.53'  
68.95'

98.63'

etc. 1st brick up  
from fdn.

brick  
Res.

County Wood S.R. 25

Township Perrysburg

Section 18

TIN, RILE

Personnel HOFFMAN

Householder

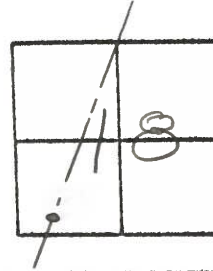
Loehrke

Date 11-20-81

Weather RAIN-SNOW

Temp. +35°

50-C



Fd. P.K. @ Surface @  $\frac{1}{2}$  of  
Both Pauts  
(set by others)

Project sta.  $\pm$  1069+61

Set P.K. Nail  
8-5-83 SWH.

