

O.D.O.T. DISTRICT 2 SURVEY OFFICE (USE ONLY)

PERSONNEL

REFERENCE NO. 50 G

SHEET 11 OF 13

NOTES RHOADES DATE 3/26/18  
 H.C. O'DONNELL WEATHER SUNNY  
 R.C. SEAMAN TEMP. 35°

ROUTE SR 25  
 COUNTY WOOD  
 TOWNSHIP PERRYSBURG  
 SECTION 18

DWG BY RHOADES PID 102808

T 6 N R 11 E

TYPE MONUMENT MAG/WASHER

ON SURFACE - ~~BELOW~~ ON

OFFSET ☐ PAVEMENT ON LT : RT

- TO - EDGE PAVEMENT

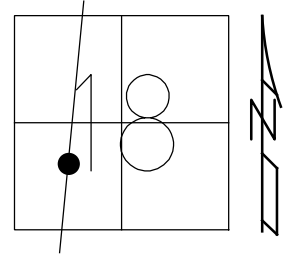
STATION: 1079+44

HORIZ.DATUM: NAD83 2011

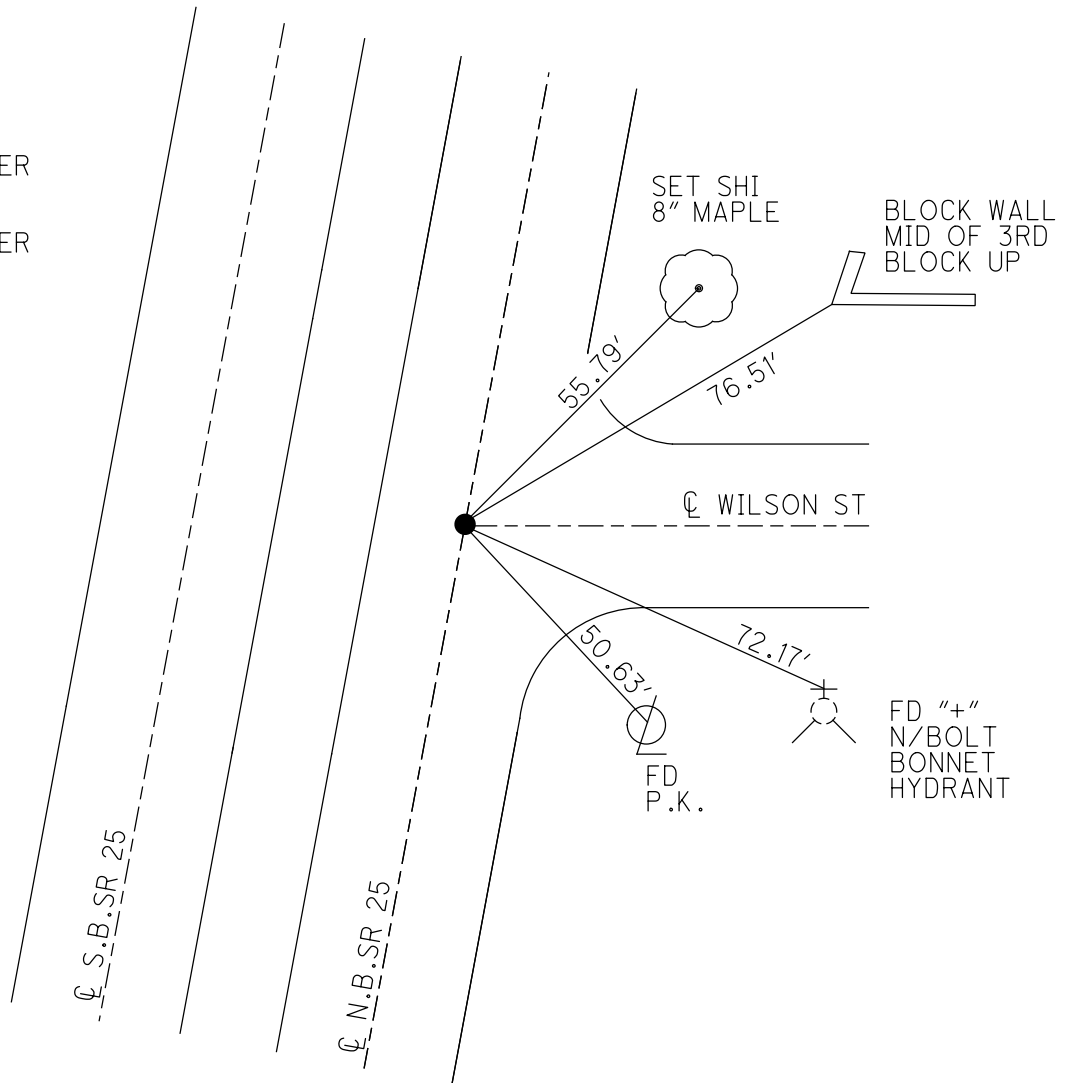
GEOID: NAVD88 2012A

GRID: NORTHING: 679743.918

EASTING: 1657159.165



RECORD:  
 FD P.K.NAIL  
 4/11/91, IRS  
 SET P.K.NAIL  
 6/6/91, DJC  
 SET MAG/WASHER  
 REFG50  
 3/26/18, JFO  
 SET MAG/WASHER  
 2/4/19, JFO



# O.D.O.T. DISTRICT 2 SURVEY OFFICE

PERSONNEL

REFERENCE NO. 50-6

SHEET 17 OF 29

NOTES L. Stone

H.C. D. Curtis

R.C. J. Hascholder

DATE 11 April '91

WEATHER Coal

TEMP. 48°

ROUTE SR#25

COUNTY Wood

TOWNSHIP Perryburg

SECTION 18

T.      R.     

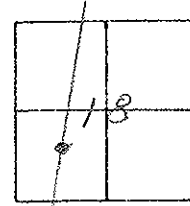
TYPE MONUMENT PK Nail

ON SURFACE - BELOW Surface

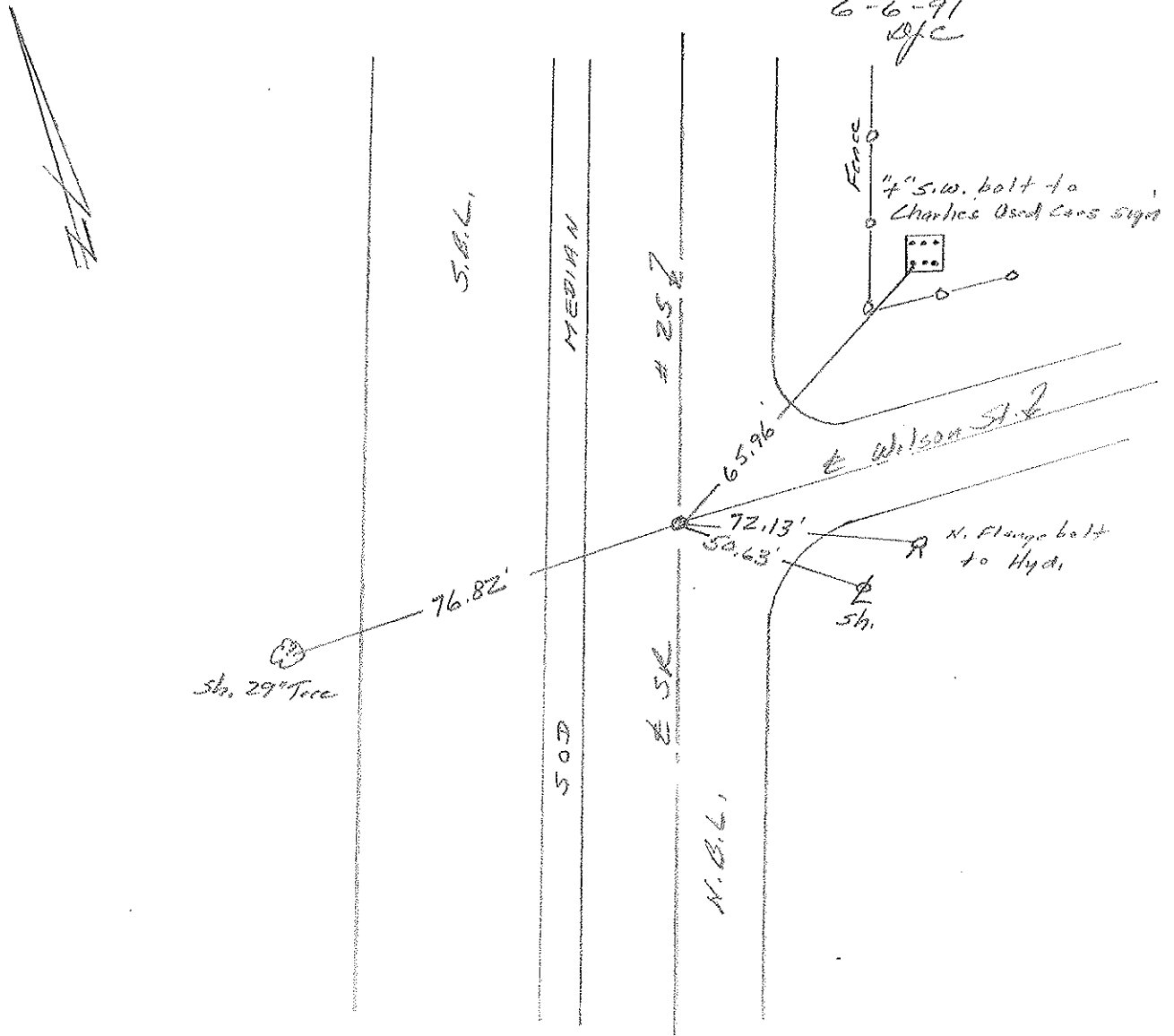
LEFT - & PAV'T. - RIGHT     

TO      EDGE PAVEMENT

S.L.M. 1079+99



SET P.K. NAIL TO SURFACE  
6-6-91  
D/C



County Wood S.R. 25

Date 11-20-81

Township Perryburg

Weather RAIN-SNOW

Section 18

Temp. +35°

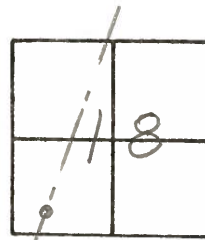
TZN, R/E

Personnel Hoffman

LOEHRE

HOUSEHOLDER

50-G



Fd P.K. SHANK @ SURFACE  
@ & S.R. 25  
3.7' N. of & PAUT WILSON  
(set by others)

Project STA ± 1079 +83  
Set P.K. NAIL  
8-5-83 SWK

