

O.D.O.T. DISTRICT 2 SURVEY OFFICE (USE ONLY)

PERSONNEL _____

REFERENCE NO. 51 B

SHEET 1 OF 13

NOTES STONE

DATE 4/11/91

ROUTE SR 25

H.C. CURTIS

WEATHER COOL

COUNTY WOOD

R.C. HOUSEHOLDER

TEMP. 49°

TOWNSHIP 12 MILE RESERVE

SECTION 18

DWG BY NIESE PID _____

T 4 US R E

TYPE MONUMENT P.K. NAIL

ON SURFACE - ~~BELOW~~ ON

OFFSET \bar{C} PAVEMENT _____ LT : RT

_____ TO _____ EDGE PAVEMENT

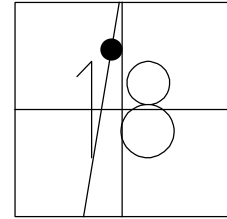
STATION: 1100+66

HORZ. DATUM: _____

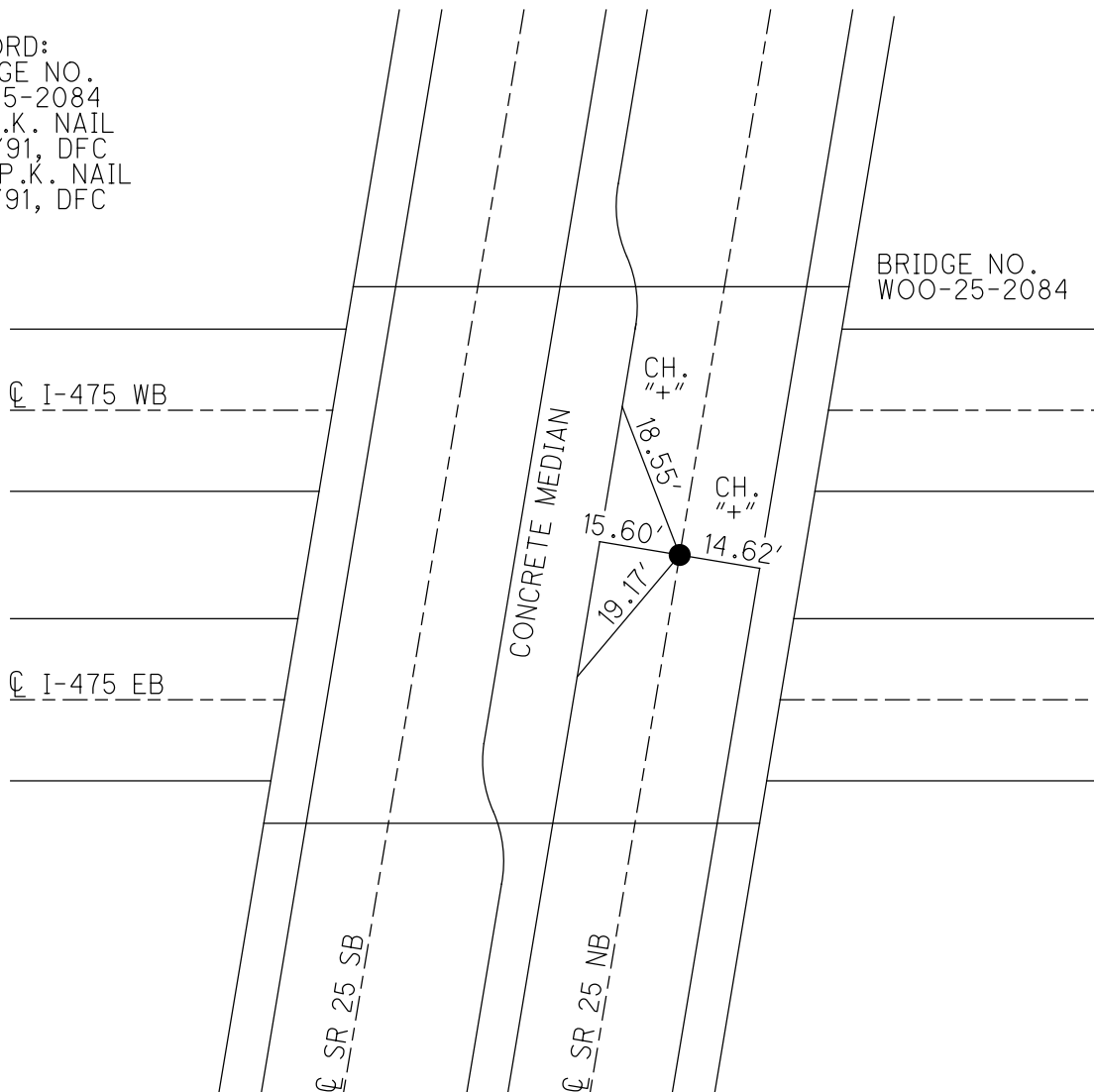
GEOID: _____

GRID: NORTHING: _____

EASTING: _____



RECORD:
BRIDGE NO.
WO.25-2084
FD P.K. NAIL
4/11/91, DFC
SET P.K. NAIL
6/6/91, DFC



O.D.O.T. DISTRICT 2 SURVEY OFFICE

PERSONNEL _____

REFERENCE NO. 51-B

SHEET 20 OF 29

NOTES 1. Stone

H.C. D. Curtis

R.C. J. Horschfelder

DATE 11 April 91

WEATHER Cool

TEMP. 49°

ROUTE SR #25

COUNTY Wood

TOWNSHIP Perrysburg

SECTION 18

T. _____ R. _____

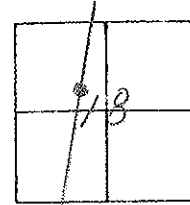
TYPE MONUMENT PK Nail

ON SURFACE - BELOW Surface

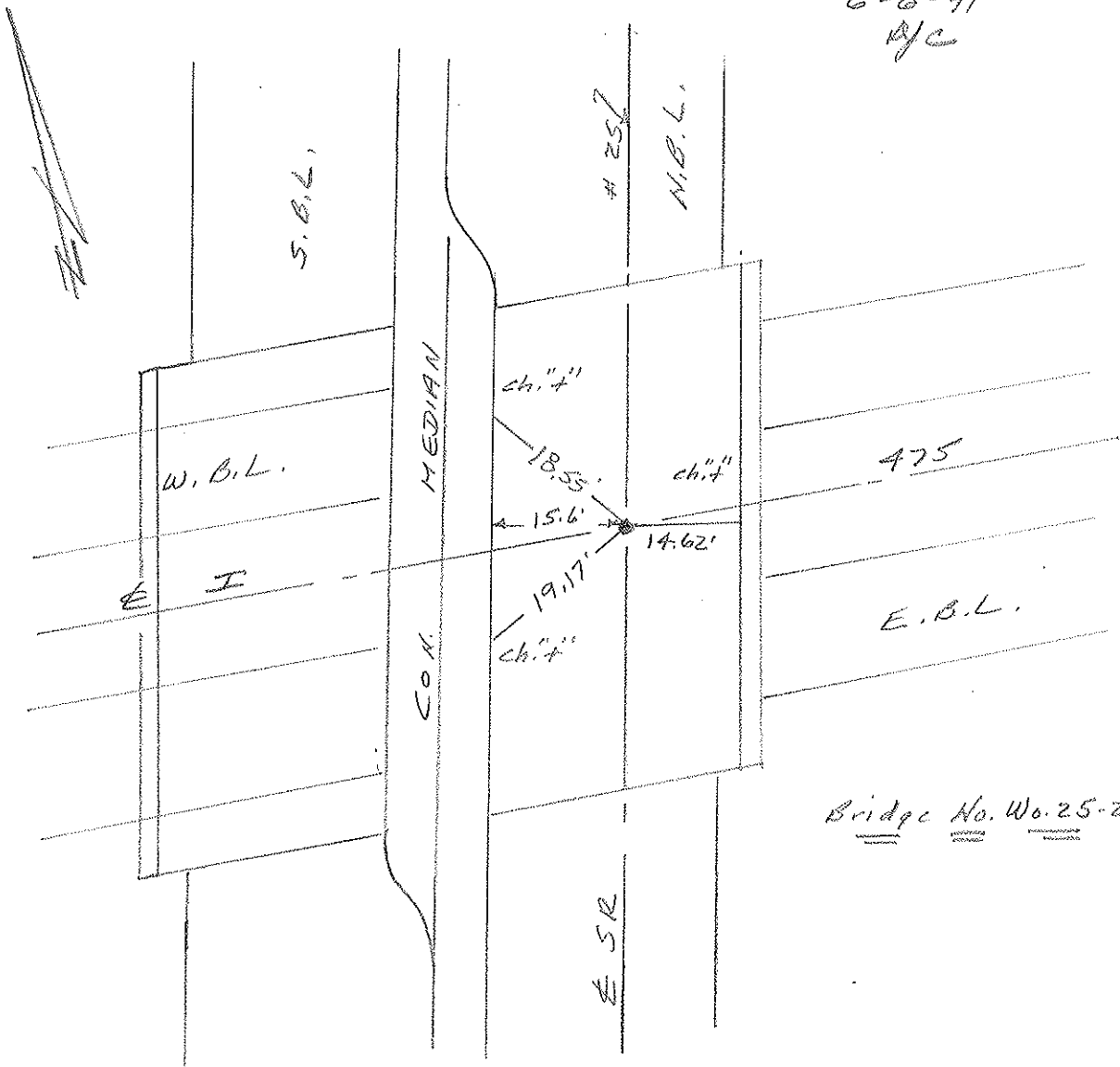
LEFT - & PAV'T. - RIGHT _____

TO _____ EDGE PAVEMENT

S.L.M. 1100466



SET P.K. NAIL TO SURFACE
6-6-91
DJC



Bridge No. Wo. 25-2084

County Wood S.R. 25

Date 6-10-83

Township Perrysburg

Weather clear

Section 18

Temp. +70°

TZN, R/E

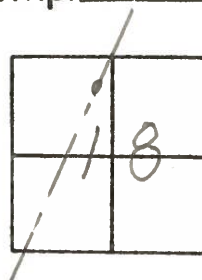
Personnel Hoffman

Loehrke

Householder

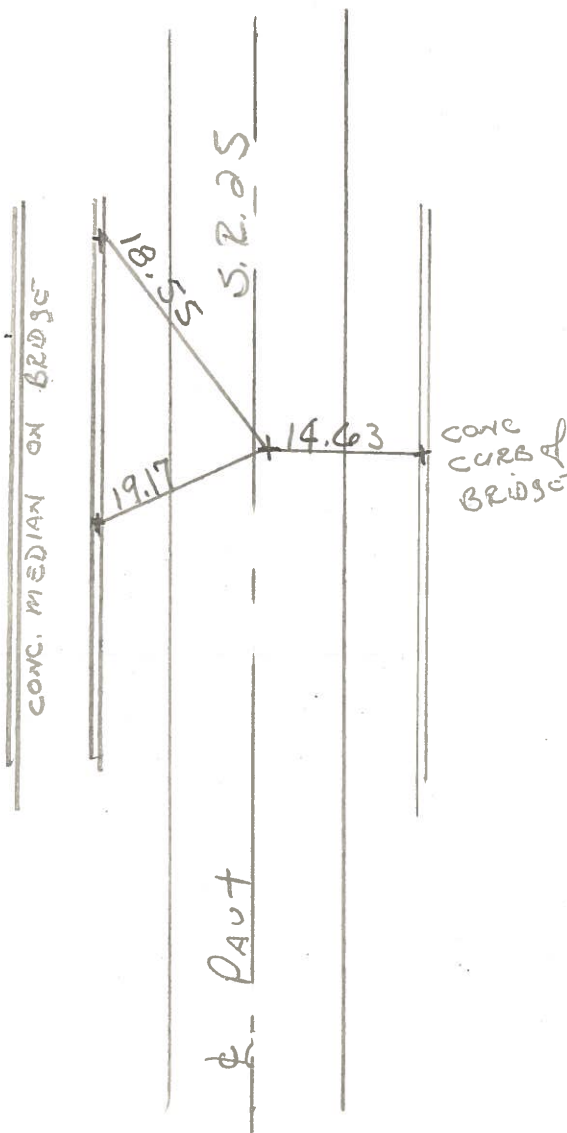
Barnisch

51-B



Fd "+" cut in conc DECK
 of BRIDGE @ & SR 25 & I-475
 1.5' RT. & part of N.B.L. SR25

SLM = 1101 + 03
 SET P.K. / WASHER
 8-5-83 SWH



CUT "+"'S FACE
 of CONC. CURB.