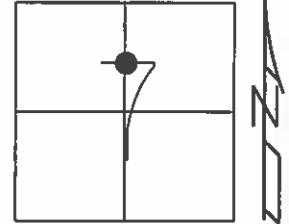


O.D.O.T. DISTRICT 2 SURVEY OFFICE (USE ONLY)

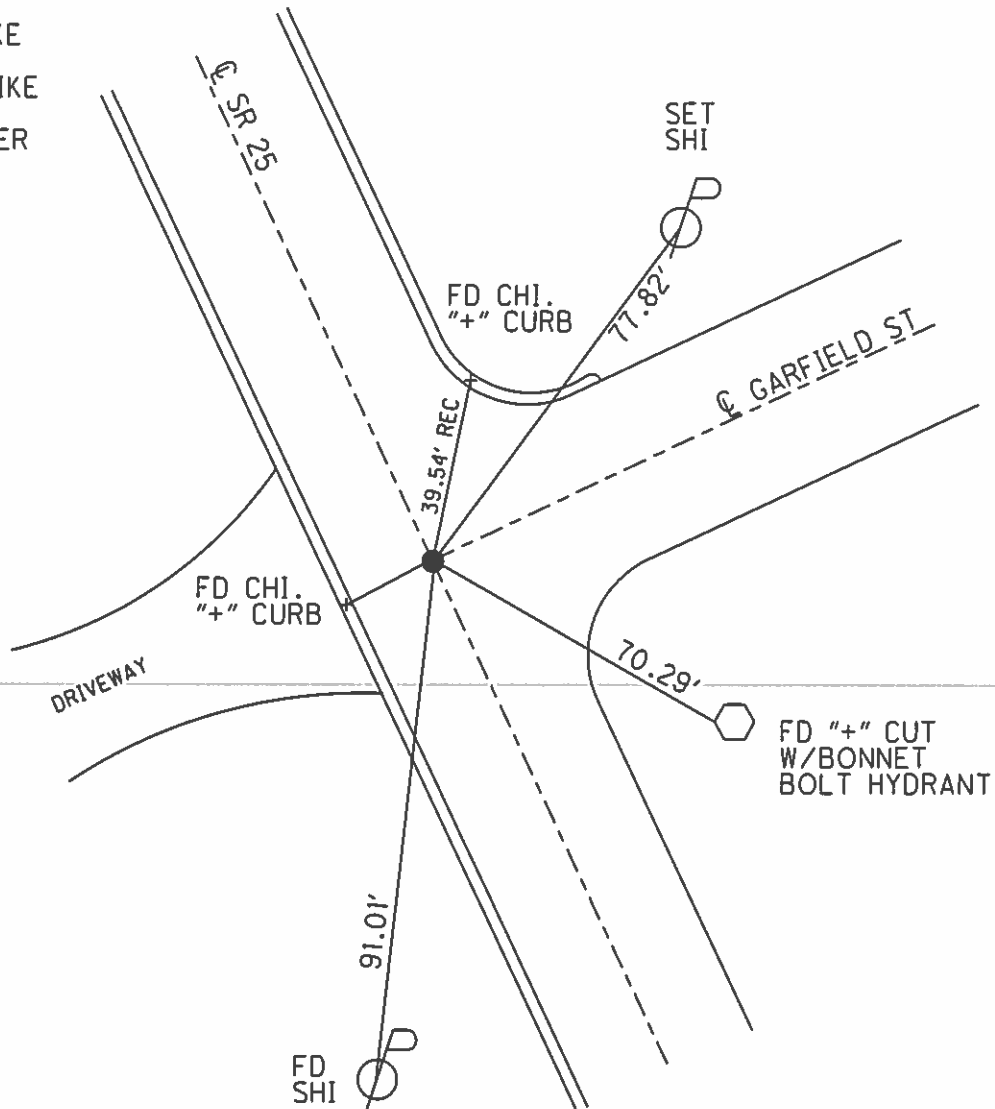
PERSONNEL	REFERENCE NO.	54 A	SHEET	3	OF	6
NOTES	RHOADES	DATE	4/9/14	ROUTE	SR 25	
H.C.	ROUSOS	WEATHER	CLEAR	COUNTY	WOOD	
R.C.	HOMAN	TEMP.	41°	TOWNSHIP	PERRYSBURG	
	GABLE			SECTION	7	
				T	4	N
				R	11	E

TYPE MONUMENT SM.R.R.SPIKE  
 ON SURFACE - ~~BELOW~~ ON  
 LEFT - ☉ PAV'T - RIGHT - \_\_\_\_\_  
 - TO - EDGE PAVEMENT  
 S.L.M. 1154+12.36

Grid: Northing: 687178.215 Easting: 1657571.422



RECORD:  
 FD SM.R.R.SPIKE  
 4/22/91, I.S.  
 SET SM.R.R.SPIKE  
 6/6/91, DJC  
 SET MAG/WASHER  
 GPS, REFA54  
 6/19/15, DCH



# O.D.O.T. DISTRICT 2 SURVEY OFFICE

PERSONNEL

REFERENCE NO. 57-A

SHEET 27 OF 29

NOTES 1. Stone

H.C. D. Curtis

R.C. J. Householder

DATE 22 April '91

WEATHER Cloudy

TEMP. 45°

ROUTE SR #25

COUNTY Wood

TOWNSHIP Pennsburg

SECTION \_\_\_\_\_

T \_\_\_\_\_ R \_\_\_\_\_

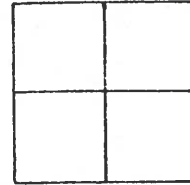
TYPE MONUMENT 5m. RR Spk.

ON SURFACE - BELOW Surface

LEFT - & PAV'T. - RIGHT \_\_\_\_\_

\_\_\_\_\_ TO \_\_\_\_\_ EDGE PAVEMENT

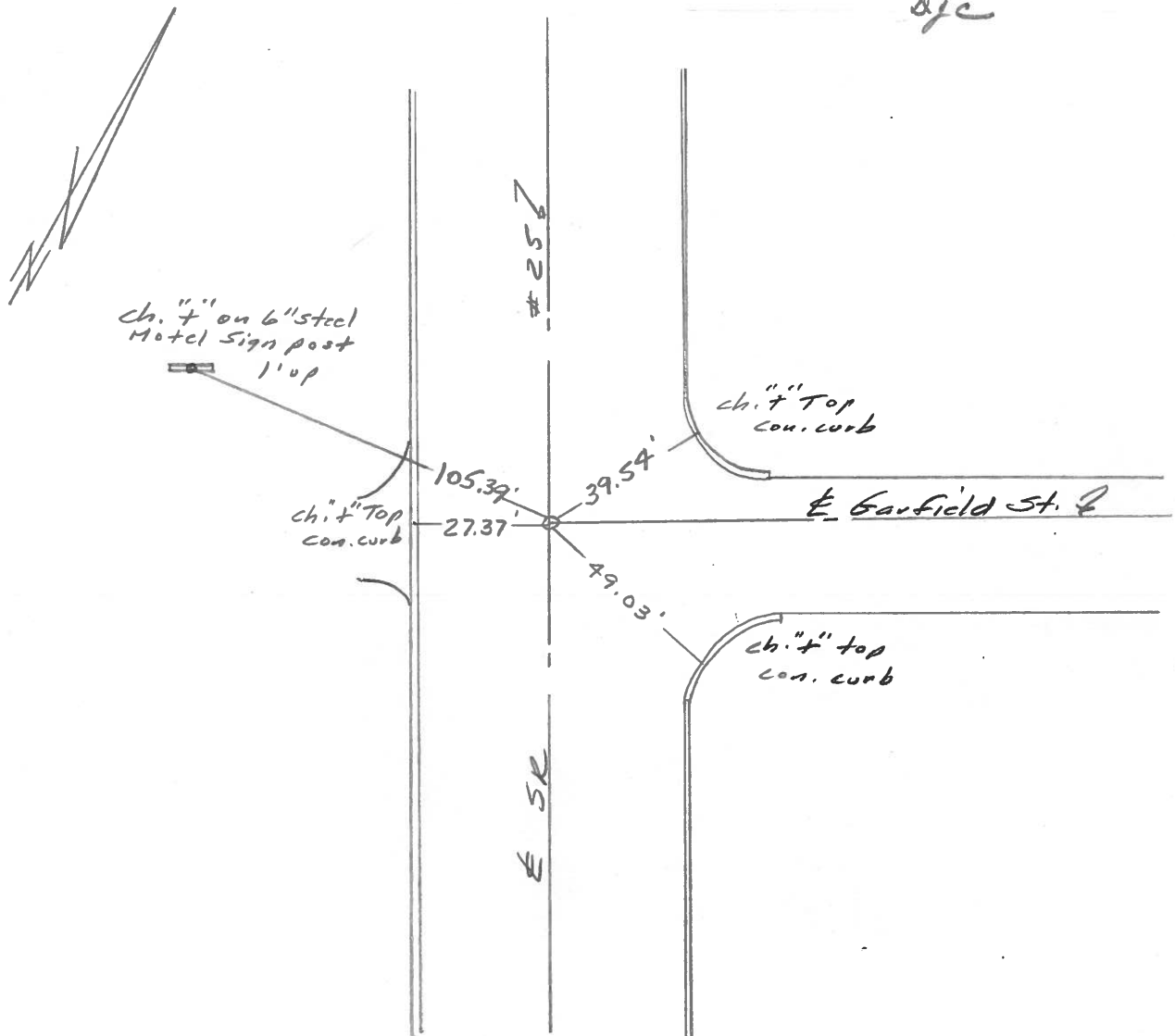
S.L.M. 1156+84



SET 5m. R.R. SPK. TO SURFACE

6-6-91

DJC



PERSONNEL TITLE PERSONNEL TITLE

COUNTY Wood

DATE 9 April 75

Stowe

S. R. #25

WEATHER Cloudy

Michalak

SEC. Perroyburg

TEMP. 32°

Denno

Curtis

DESCRIPTION

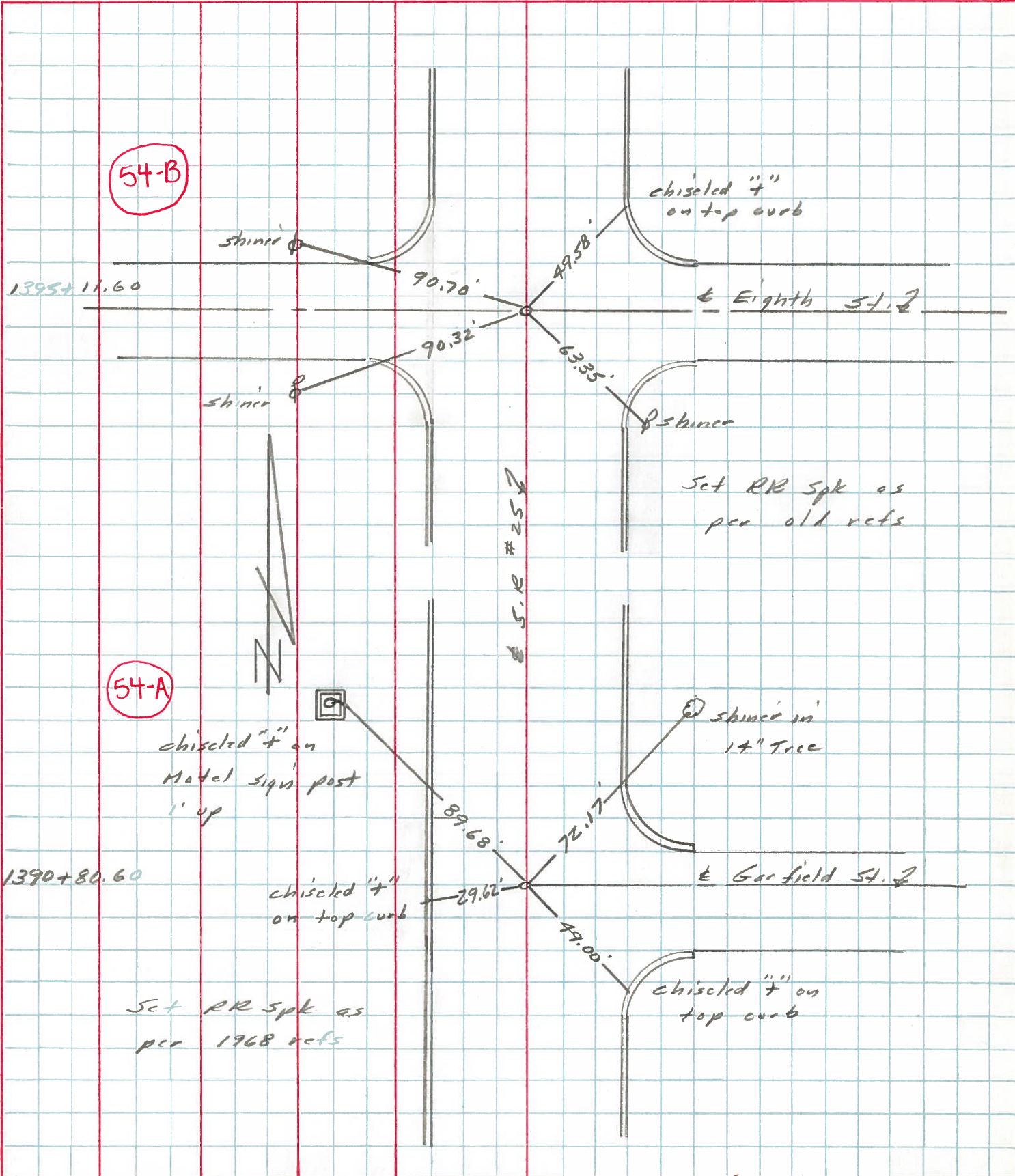
References to Central Pointe

JOB NO.

LEFT

CENTER LINE

RIGHT



PERSONNEL TITLE PERSONNEL TITLE

COUNTY Wood DATE

S. R. U.S. # 25 WEATHER

SEC. Perrysburg TEMP.

DESCRIPTION S.H. 57 LEFT CENTER LINE RIGHT JOB NO.

Sta. 581+34.4  
Mon. - P.P. spike  
Δ: Rec. 34°00'

# 875

W. to shiner in T.P. 70.66  
S.E. to N.N.W. sidewalk/curb 58.9  
N.E. to shiner in 28" locust 35.00  
N.N.E. to shi. in 24" hack berry 56.0

Sta. 598+18.6  
mon. set. (10-17-49)

# 876

16" Elm N.W. 72.22  
Shiner in P.P. E.S.E. 66.72  
Shiner in 15" walnut S.E. 66.45

Sta. 593+72.35  
+ in conc. part  
Garfield Drive

(54-A)

# 877

N. to shi. in 36" maple 74.68  
E. to sign post 31.22  
N.E. S. cor. foundation house 101.7

Sta. 627+11.10  
+ in conc. part  
Sixth St.

(54-D)

# 878

W. to shiner in T.P. 34.45  
S.W. to shiner in 12" Elm 32.22  
N.E. to shiner in P.P. 32.45

Sta. 616+19.72  
Mon. - fd. R.R. spk.

# 879

W. to shi. in 20" buckeye 72.38  
N. to R.R. spk. in 36" oak 83.92  
E. to shiner in P.P. 81.65

Sta. 625+27.35  
Iron pin - fd R.R. spk.  
Second St

(54-F)

E.S.E. to shi. P.P. (plumbed) 59.20  
W.N.W. to shi. in 24" maple 46.95  
S.W. to shi. in 24" maple 24.13