

O.D.O.T. DISTRICT 2 SURVEY OFFICE (USE ONLY)

PERSONNEL \_\_\_\_\_

REFERENCE NO. 54 D

SHEET 10 OF 13

NOTES STONE

DATE 4/22/91

ROUTE SR 25

H.C. CURTIS

WEATHER COOL

COUNTY WOOD

R.C. HOUSEHOLDER

TEMP. 48°

TOWNSHIP PERRYSBURG

SECTION 12 MILE RESERVE

DWG BY NIESE PID \_\_\_\_\_

T 4 US R E

TYPE MONUMENT SMALL R.R. SPIKE

ON SURFACE - ~~BELOW~~ ON

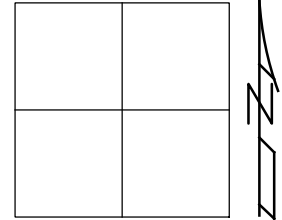
OFFSET ☉ PAVEMENT ON LT : RT

- TO - EDGE PAVEMENT

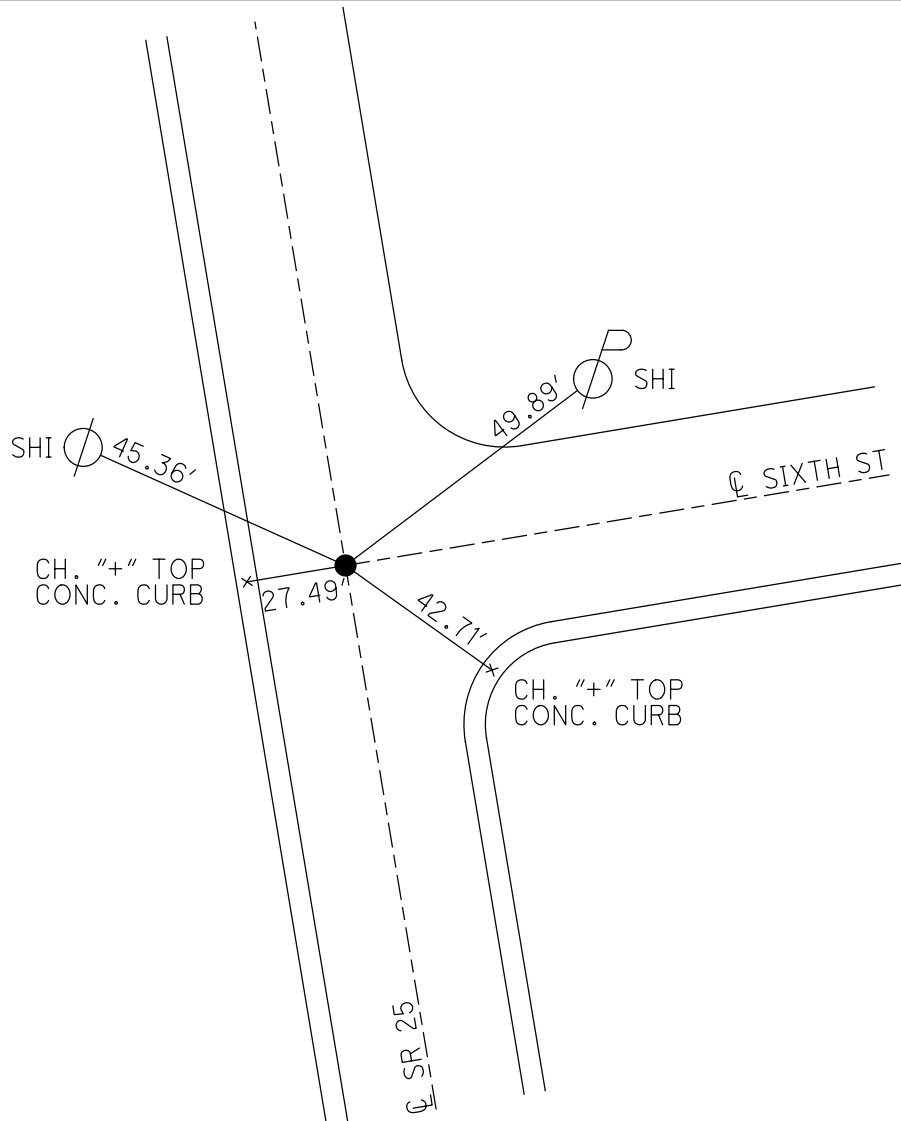
STATION: 1170+07

HORIZ.DATUM: \_\_\_\_\_ GEOID: \_\_\_\_\_

GRID: NORTHING: \_\_\_\_\_ EASTING: \_\_\_\_\_



RECORD:  
FD SM.R.R. SPIKE  
4/22/91, DFC  
SET SM.R.R. SPIKE  
6/6/91, DFC



# O.D.O.T. DISTRICT 2 SURVEY OFFICE

PERSONNEL \_\_\_\_\_

REFERENCE NO. 57-D

SHEET 27 OF 29

NOTES 1.5' low

H.C. D. Curtis

R.C. J. Henschel

DATE 22 April 71

WEATHER cool

TEMP. 48°

ROUTE SR#25

COUNTY Wood

TOWNSHIP Perrysburg

SECTION \_\_\_\_\_

T \_\_\_\_\_ R \_\_\_\_\_

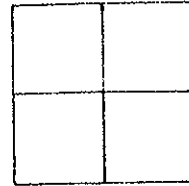
TYPE MONUMENT Sm. RR Spk

ON SURFACE - BELOW Surface

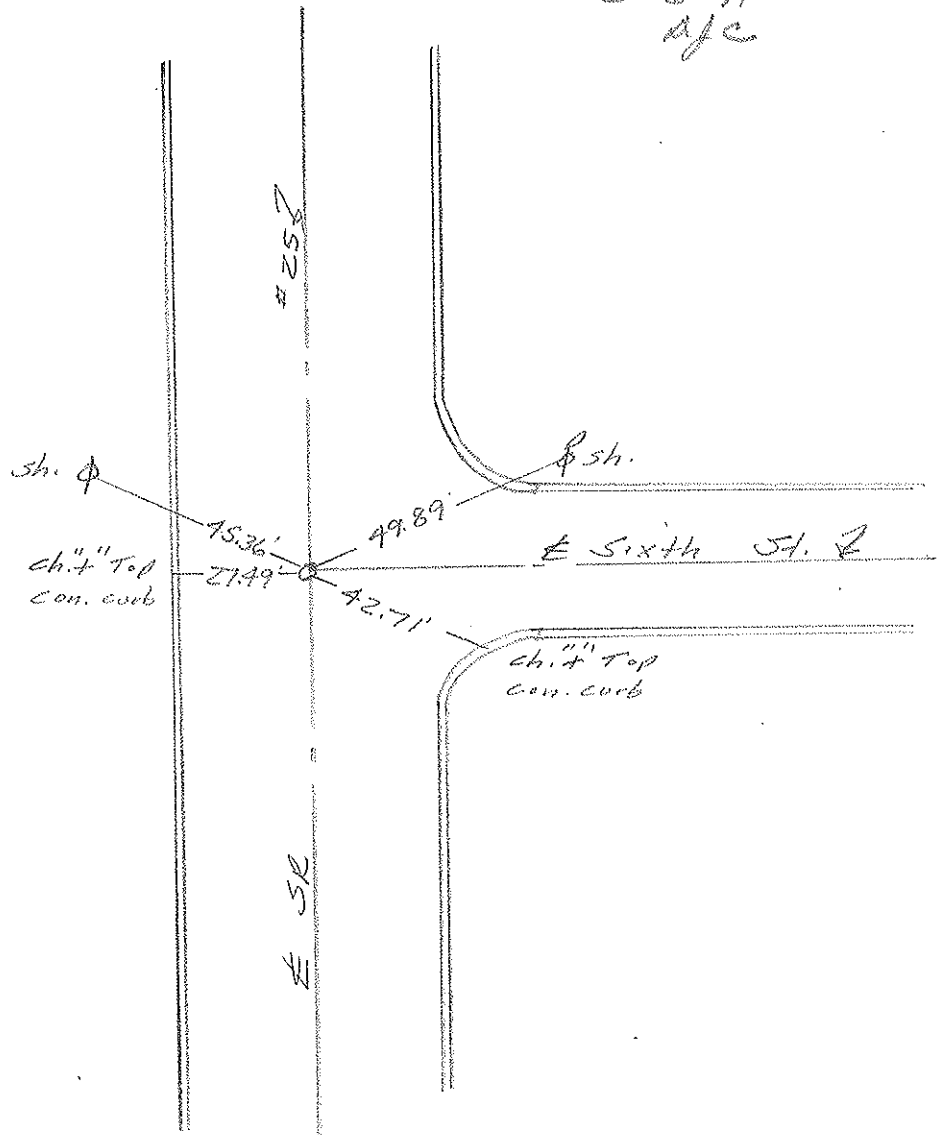
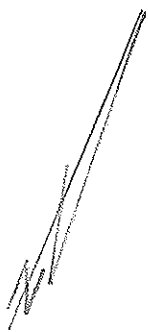
LEFT - & PAV'T. - RIGHT \_\_\_\_\_

\_\_\_\_\_ TO \_\_\_\_\_ EDGE PAVEMENT

S.L.M. 1170+07

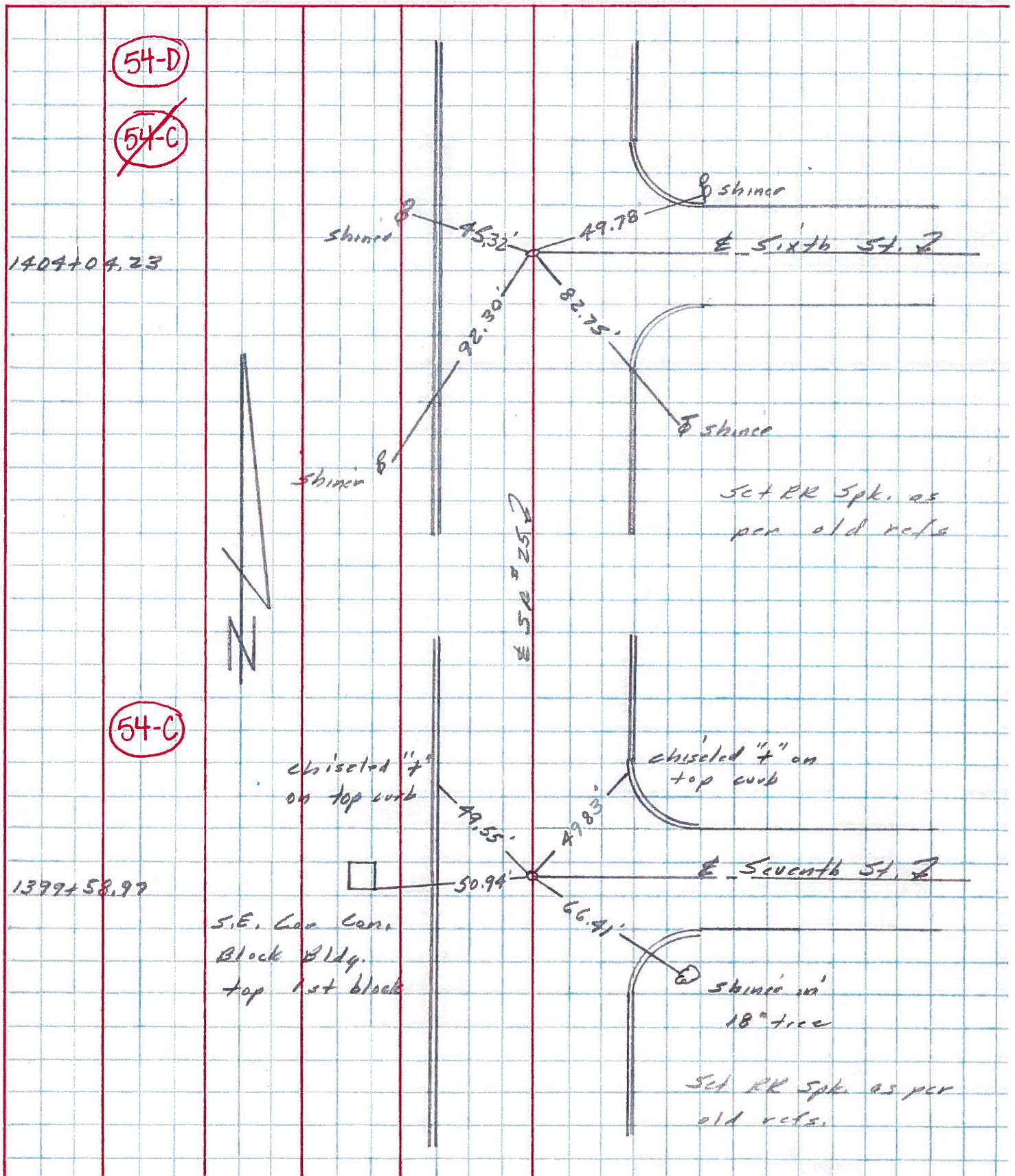


SET SM. R.R. SPK. TO SURFACE  
6-6-91  
AJC



PERSONNEL	TITLE	PERSONNEL	TITLE
<u>Stone</u>			
<u>Michalek</u>			
<u>Deana</u>			
<u>Curtis</u>			

COUNTY Wood DATE 9 April 75  
 S. R. #25 WEATHER Cloudy  
 SEC. Perry'sburg TEMP. 33°  
 DESCRIPTION References to Control Points JOB NO. \_\_\_\_\_





PERSONNEL TITLE PERSONNEL TITLE

COUNTY Wood DATE \_\_\_\_\_

S. R. U.S. #25 WEATHER \_\_\_\_\_

SEC. Perrysburg TEMP. \_\_\_\_\_

DESCRIPTION S.H. 57 LEFT CENTER LINE RIGHT JOB NO. \_\_\_\_\_

Sta. 581+34.4  
Mon. - R.R. spike  
Δ: Rec. 34°00'

#  
**875**

W. to shiner in T.P. 70.66'  
S.E. to x N.W. side wall/curb 58.95'  
N.E. to shiner in 28" locust 35.00'  
N.N.E. to shi. in 24" hack berry 56.00'

Sta. 598+18.6  
mon. set. (10-17-49)

#  
**876**

16" Elm N.W. 72.22'  
Shiner in P.P. E.S.E. 66.72'  
Shiner in 15" walnut S.E. 66.49'

Sta. 593+72.35  
+ in conc. pav't  
Garfield Drive

#  
**877**

**54-A**

N. to shi. in 36" maple 74.68'  
E. to sign post 31.22'  
N.E. S. cor. foundation house 101.79'

Sta. 607+11.10  
+ in conc. pav't.  
Sixth St.

#  
**878**

**54-D**

W. to shiner in T.P. 34.43'  
S.W. to shiner in 12" Elm 32.28'  
N.E. to shiner in P.P. 32.45'

Sta. 616+19.72  
Mon. - fd. R.R. spk.

#  
**879**

W. to shi. in 20" buckeye 72.38'  
N. to R.R. spk. in 36" oak 83.92'  
E. to shiner in P.P. 81.65'

Sta. 625+27.35  
Iron pin - fd R.R. spk.  
Second St

#  
**880**

**54-F**

E.S.E. to shi. P.P. (plumbed) 59.20'  
W.N.W. to shi. in 24" maple 46.95'  
S.W. to shi. in 24" maple 24.13'