

O.D.O.T. DISTRICT 2 SURVEY OFFICE (USE ONLY)

PERSONNEL

REFERENCE NO. 54 F

SHEET 12 OF 13

NOTES STONE DATE 4/22/91
H.C. CURTIS WEATHER COOL
R.C. HOUSEHOLDER TEMP. 50°

ROUTE SR 25
COUNTY WOOD
TOWNSHIP PERRYSBURG
SECTION 12 MILE RESERVE

DWG BY NIESE PID _____

T4US RE

TYPE MONUMENT SM.R.R. SPIKE

ON SURFACE - ~~BELOW~~ ON

OFFSET ☉ PAVEMENT ON LT : RT

- TO - EDGE PAVEMENT

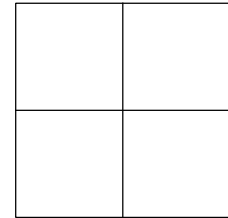
STATION: 1188+23

HORZ.DATUM: _____

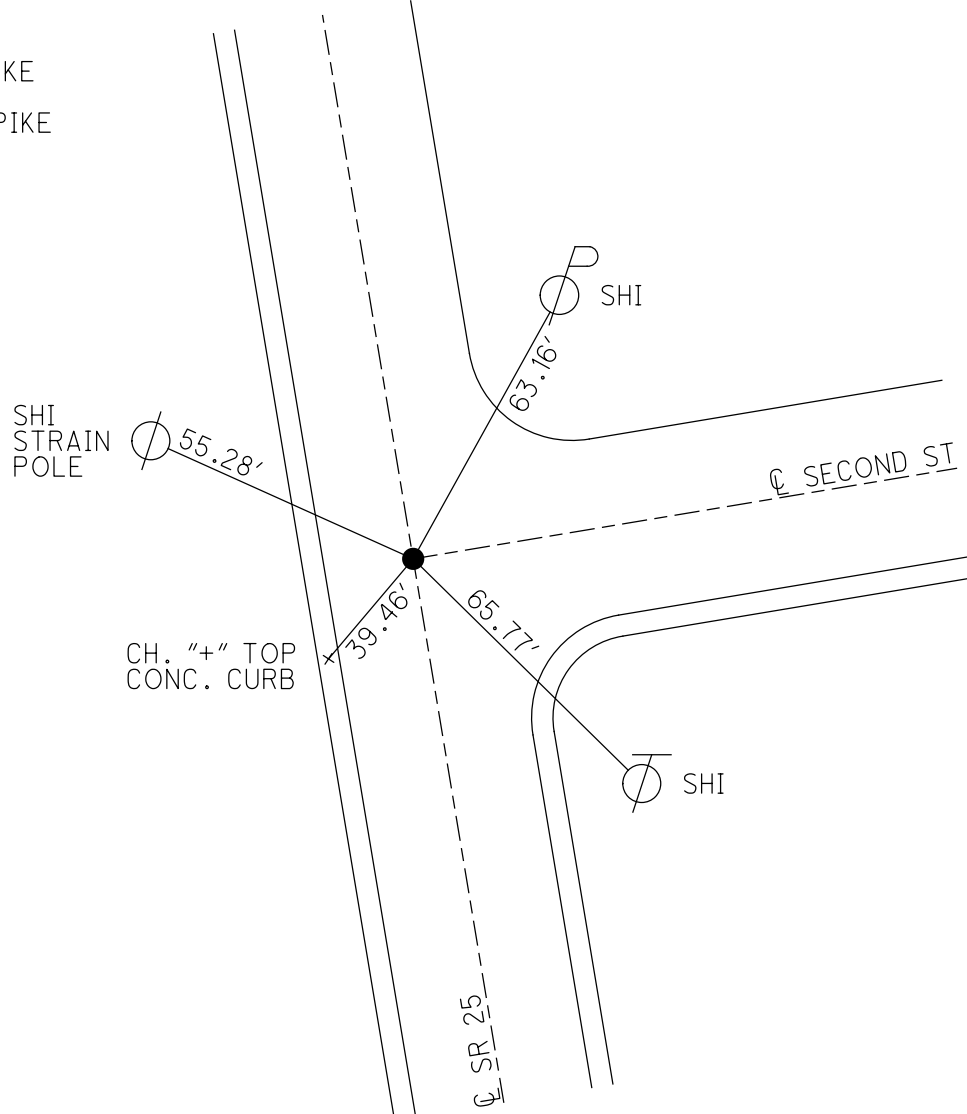
GEOID: _____

GRID: NORTHING: _____

EASTING: _____



RECORD:
FD SM.R.R. SPIKE
4/22/91, DFC
SET SM.R.R. SPIKE
6/6/91, DFC



O.D.O.T. DISTRICT 2 SURVEY OFFICE

PERSONNEL

REFERENCE NO. 54-F

SHEET 29 OF 29

NOTES L. Stone

H.C. D. Curtis

R.C. J. Hoeseholder

DATE 22 April 91

WEATHER Cool

TEMP. 50°

ROUTE SR#25

COUNTY Wood

TOWNSHIP Perryburg

SECTION _____

T _____ R _____

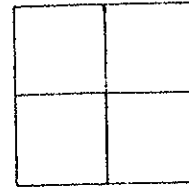
TYPE MONUMENT 5m RR Spk.

ON SURFACE - BELOW Surface

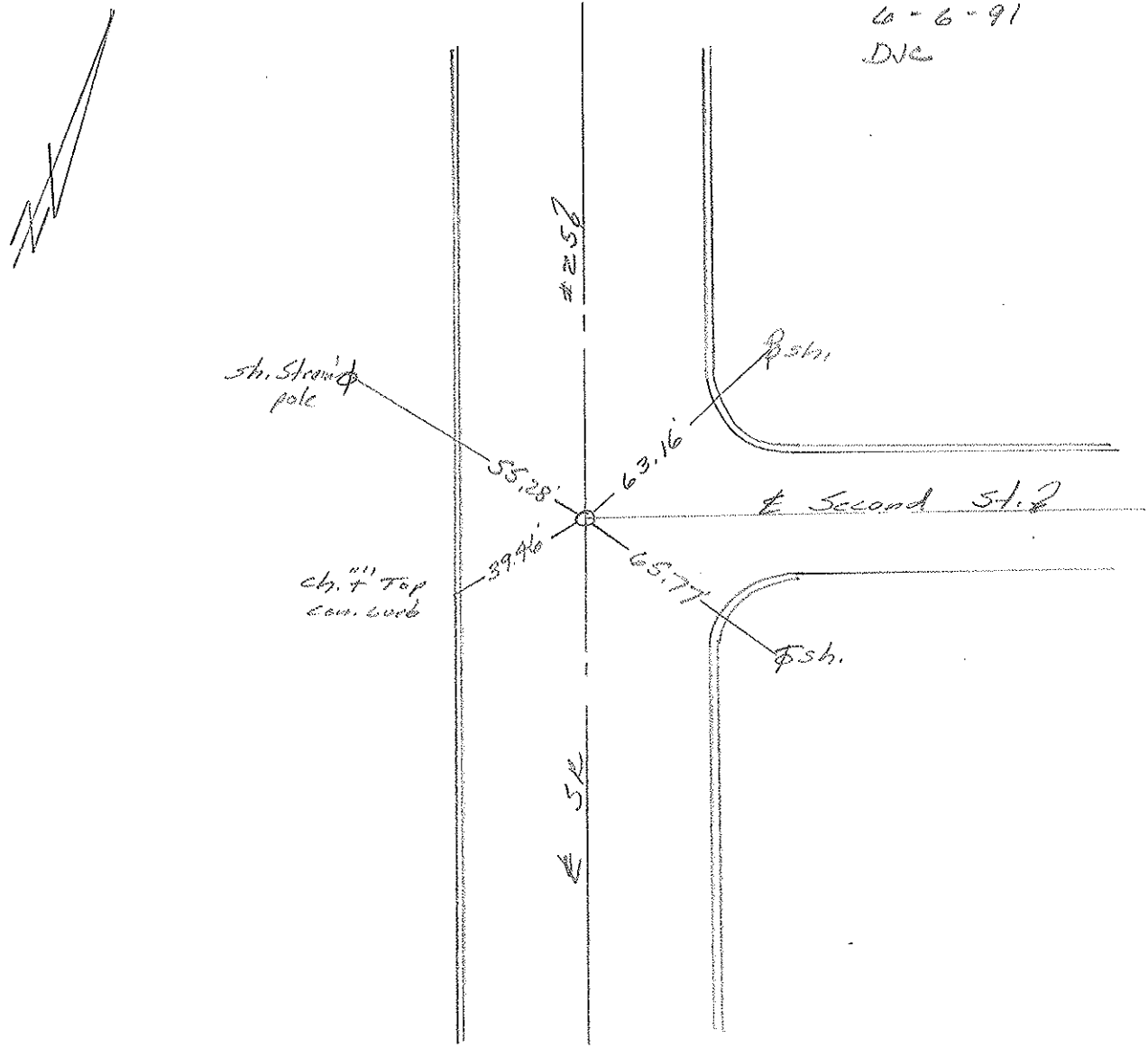
LEFT - \odot PAV'T. - RIGHT _____

TO _____ EDGE PAVEMENT

S.L.M. 1188+23



SET SM, R, R, SPK. TO SURFACE
6-6-91
DJG



PERSONNEL TITLE PERSONNEL TITLE
Silvester _____

COUNTY Wood DATE 6-28-56

S. R. U.S. #25 WEATHER

SEC. TEMP.

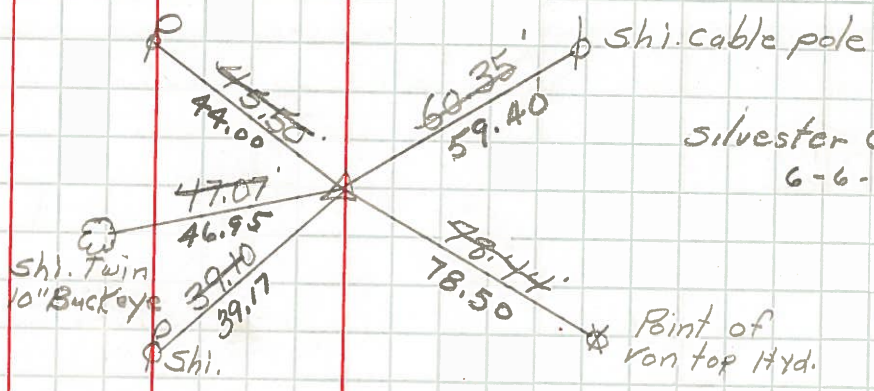
DESCRIPTION W. Boundary St. Perrysburg.

JOB NO.

Sta. 1422 + 20.30
W. Boundary & 2nd
I. pin on 2nd

#913

(54-F)



Sta. 1426 + 65.60
W. Boundary & Front st.
Mon. Box

#914

PERSONNEL TITLE PERSONNEL TITLE

COUNTY Wood DATE _____

S. R. U.S. #25 WEATHER _____

SEC. Perrysburg TEMP. _____

DESCRIPTION S.H. 57 LEFT CENTER LINE RIGHT JOB NO. _____

Sta. 581+34.4
Mon. - R.R. spike
Δ: Rec. 34°00'

875

W. to shiner in T.P. 70.66
S.E. to N.W. sidewalk/curb 58.9
N.E. to shiner in 28" locust 35.00
N.N.E. to shi. in 24" hack berry 56.0

Sta. 598+18.6
mon. set. (10-17-49)

876

16" Elm N.W. 72.22
Shiner in P.P. E.S.E. 66.72
Shiner in 15" walnut S.E. 66.49

Sta. 593+72.35
+ in conc. pav't
Garfield Drive

877

(54-A)

N. to shi. in 36" maple 74.68
E. to sign post 31.22
N.E. S. cor. foundation house 101.7

Sta. 627+11.10
+ in conc. pav't
Sixth St.

878

(54-D)

W. to shiner in T.P. 34.43
S.W. to shiner in 12" Elm 32.28
N.E. to shiner in P.P. 32.46

Sta. 616+19.72
Mon. - Rd. R.R. spk.

879

W. to shi. in 20" buckeye 72.38
N. to R.R. spk. in 36" oak 83.92
E. to shiner in P.P. 81.65

Sta. 625+27.35
Iron pin - Rd R.R. spk.
Second St

0000

(54-F)

E.S.E. to shi. P.P. (Plumbed) 59.20
W.N.W. to shi. in 24" maple 46.95
S.W. to shi. in 24" maple 24.13