

Scanned July 1977

LOCATION PLAN

W00 - I20 R - 8.25

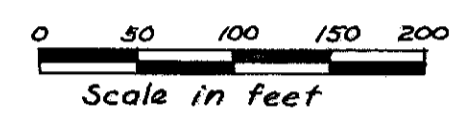
W00 - I20 - 0.66

TOLEDO EXPRESSWAY SYSTEM
EXPRESSWAY PART 6

Wood County

Ross Township

DEPARTMENT OF HIGHWAYS
STATE OF OHIO
1953

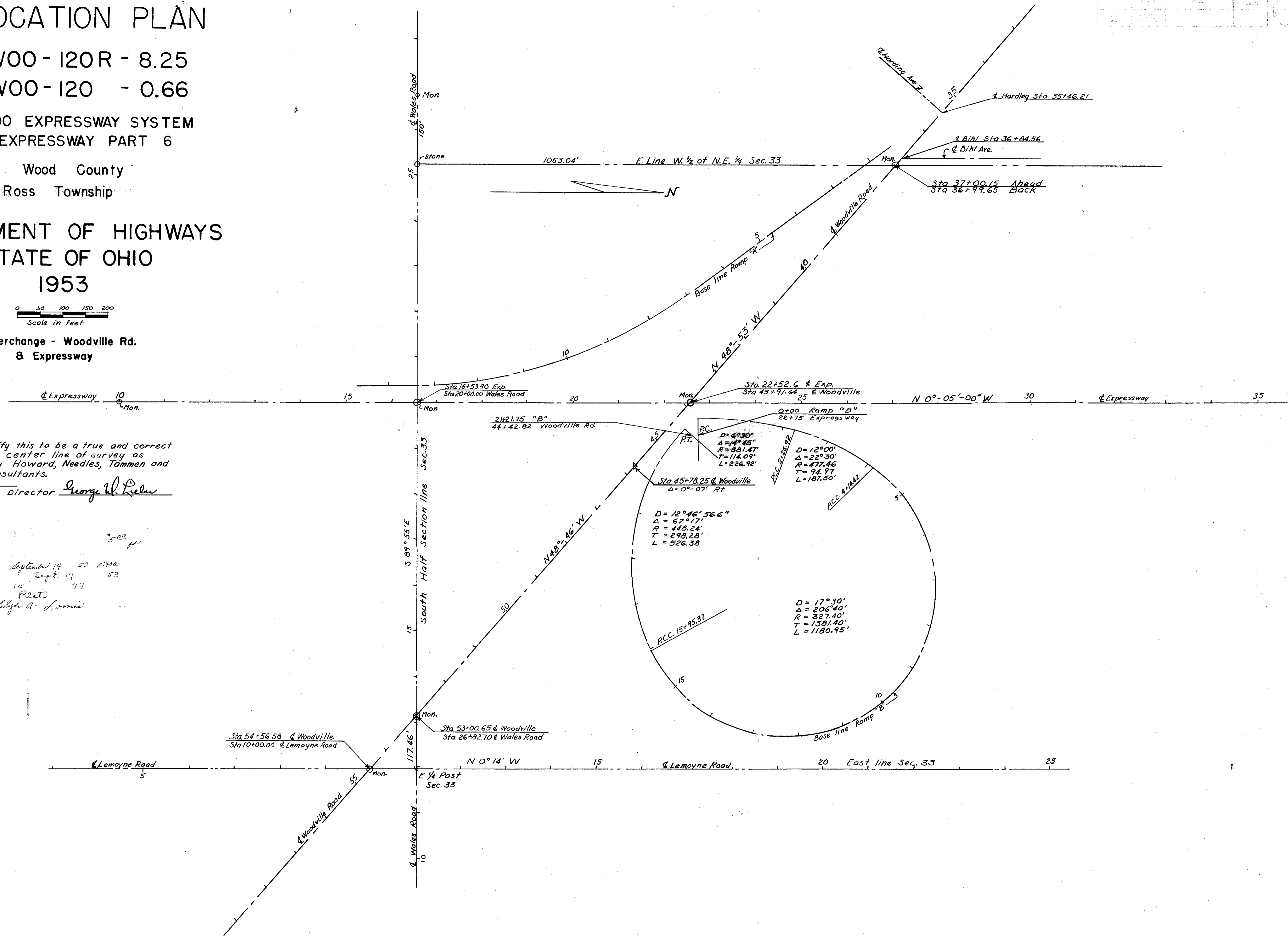


Interchange - Woodville Rd.
& Expressway

I hereby certify this to be a true and correct
plotting of the center line of survey as
determined by Howard, Needles, Tammen and
Bergendoff, Consultants.
Date 8-12-53
Division Deputy Director George W. Fisher

500 ft
September 14 53 0:40a
Sept. 17 53
10
Plets
Elyse A. Lammie

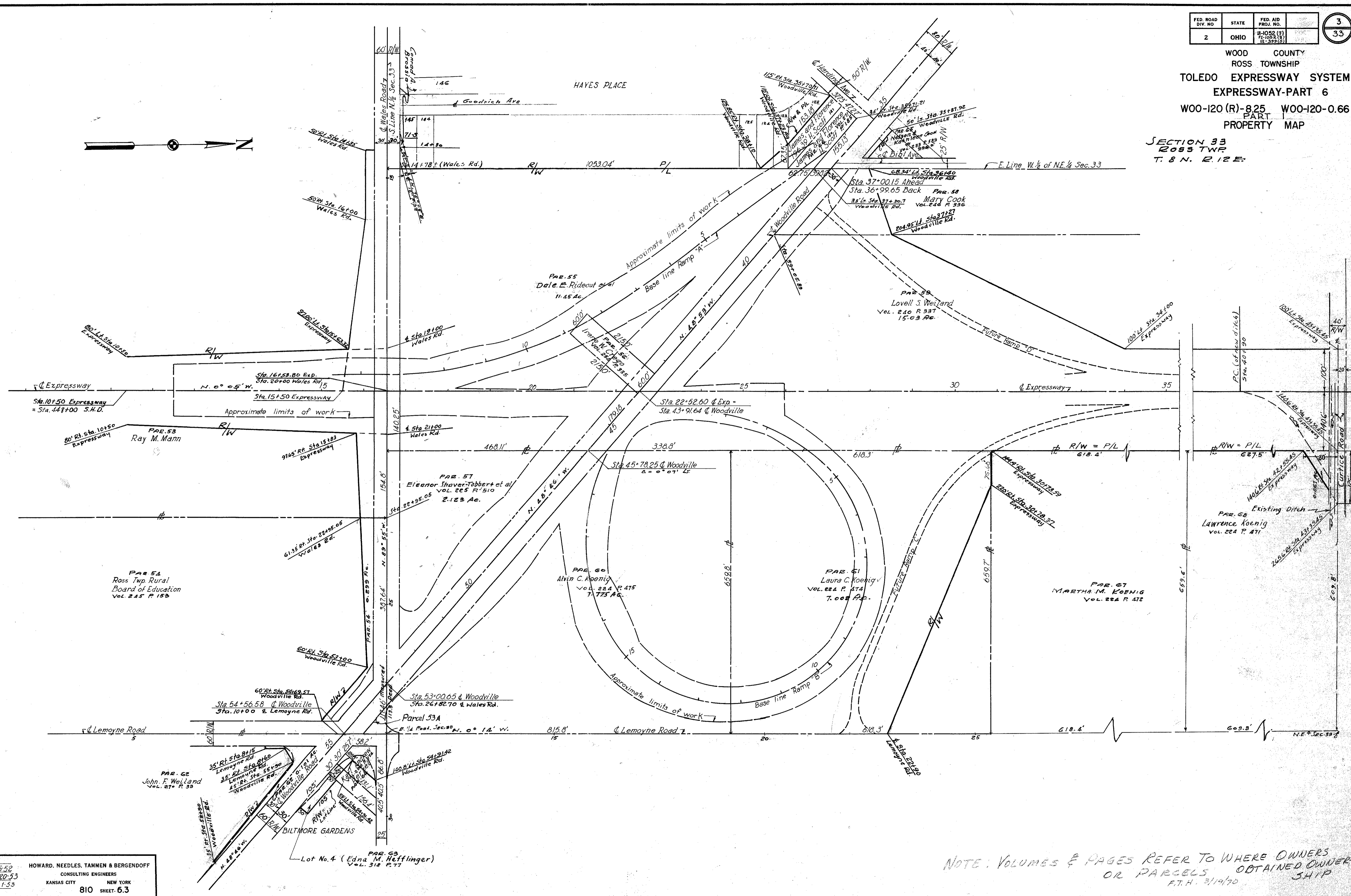
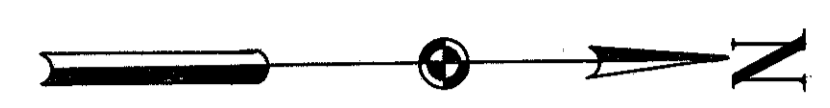
R8051 #2 D-64



FED. ROAD DIV. NO.	STATE	FED. AID PROJ. NO.	3
2	OHIO	4-1052 (7) 71-1052 (18) 11-33712	33

WOOD COUNTY
ROSS TOWNSHIP
TOLEDO EXPRESSWAY SYSTEM
EXPRESSWAY-PART 6
WOO-120 (R)-8.25 WOO-120-0.66
PART PROPERTY MAP

SECTION 33
ROSS TWP
T. 8 N. R. 12 E.



SCALE 1"=100'
MADE 1/26 DATE 9-5-52 HOWARD, NEEDLES, TAMMEN & BERGENDOFF CONSULTING ENGINEERS
TRCD 1/16 DATE 3-20-53 KANSAS CITY NEW YORK
CKD 6M-AH3 DATE 4-1-53 810 SHEET 6.3
Revised by Div. 2 - State Hwy. Dept. 9-28-53

NOTE: VOLUMES & PAGES REFER TO WHERE OWNERS OR PARCELS OBTAINED OWNER SHIP
F.T.H. 3/19/70