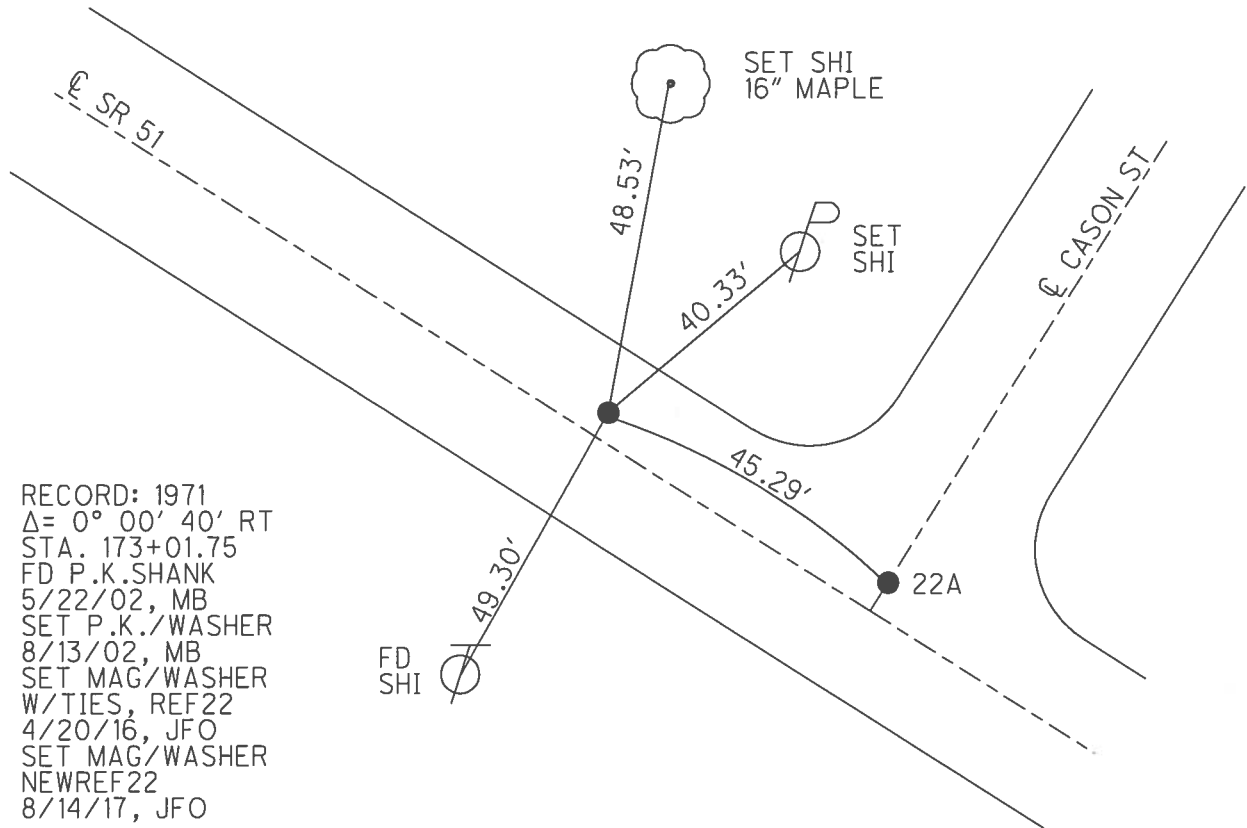
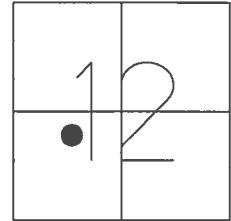


O.D.O.T. DISTRICT 2 SURVEY OFFICE (USE ONLY)

PERSONNEL	REFERENCE NO.	<u>22</u>	SHEET	<u>11</u>	OF	<u>30</u>
NOTES	<u>RHOADES</u>	DATE	<u>4/20/16</u>	ROUTE	<u>SR 51</u>	
H.C.	<u>O'DONNELL</u>	WEATHER	<u>SUNNY</u>	COUNTY	<u>WOOD</u>	
R.C.	<u>RHOADES</u>	TEMP.	<u>50°</u>	TOWNSHIP	<u>LAKE</u>	
				SECTION	<u>12</u>	
				T	<u>7</u>	R
					<u>N</u>	<u>12</u>
					<u>E</u>	

TYPE MONUMENT MAG/WASHER
 ON SURFACE - ~~BELOW~~ ON
~~LEFT~~ - CL PAV'T - RIGHT 2.1'
9.0' TO RT EDGE PAVEMENT
 S.L.M. 53+94
 GRID: NORTHING: 697948.200 EASTING: 1714070.303



RECORD: 1971
 $\Delta = 0^\circ 00' 40''$ RT
 STA. 173+01.75
 FD P.K.SHANK
 5/22/02, MB
 SET P.K./WASHER
 8/13/02, MB
 SET MAG/WASHER
 W/TIES, REF22
 4/20/16, JFO
 SET MAG/WASHER
 NEWREF22
 8/14/17, JFO

O.D.O.T. DISTRICT 2 SURVEY OFFICE

PERSONNEL

REFERENCE NO. 22

SHEET 10 OF 23

NOTES M. BARNHISEL

H.C. M. CANTERBURY

R.C. C. BRUMBAUGH

DATE 5-22-02

WEATHER SUNNY

TEMP. +48°

ROUTE SR-51

COUNTY Lake

TOWNSHIP LAKE

SECTION 12

T 7 N R 12 E

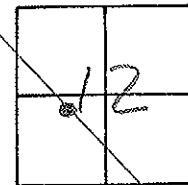
TYPE MONUMENT P.K. SHANK

ON SURFACE - BELOW ON

LEFT - CL PAV'T. - RIGHT 2.1'

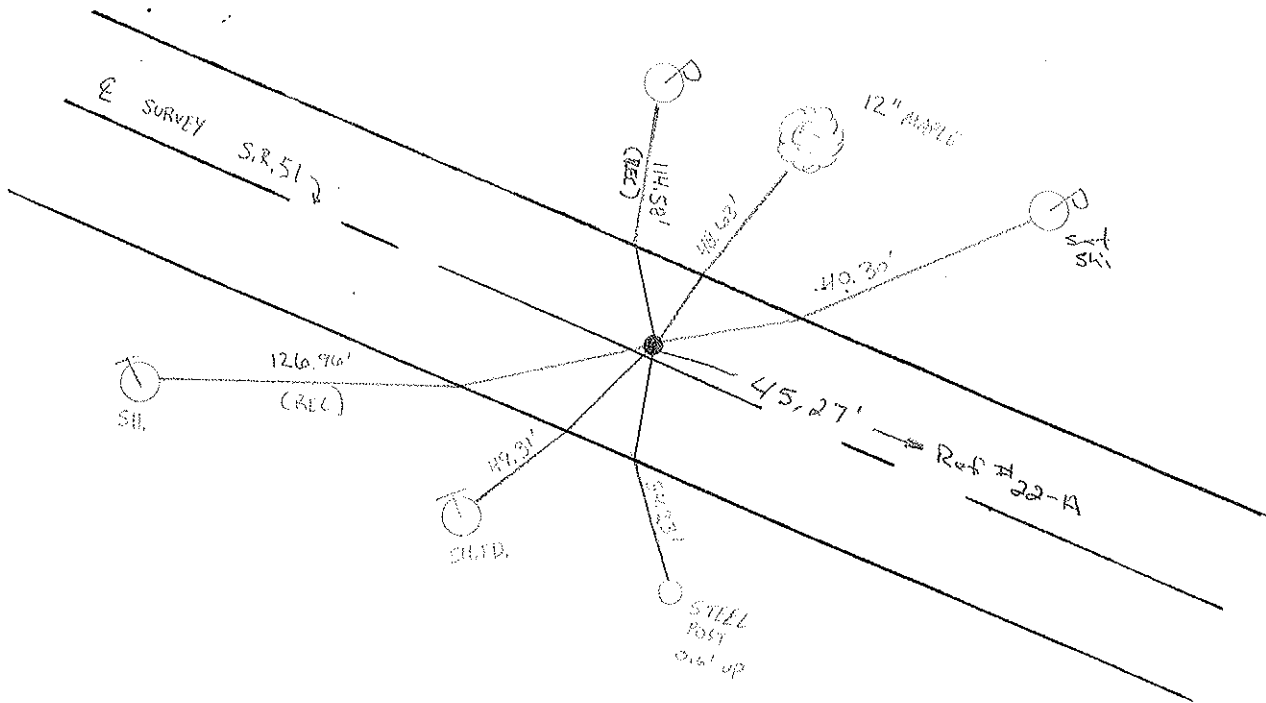
9.0' TO RT EDGE PAVEMENT

S.L.M. 53194



SET PK. / WASHER
8-13-02
MB.

Record! 1971 # 16
173 + 01.75
 $\Delta = 0^{\circ} - 00' - 40''$ RT.



O.D.O.T. DISTRICT 2 SURVEY OFFICE

PERSONNEL

REFERENCE NO. 22-²²A

SHEET 14 OF

NOTES 1. Stone

H.C. D. Curtis

DATE 26 Feb. 86

ROUTE SR#51

R.C. J. Hauschalter

WEATHER Cloudy

COUNTY Wood

R. Michalak

TEMP. 20°

TOWNSHIP Lake

SECTION 12

T 7 N R 12 E

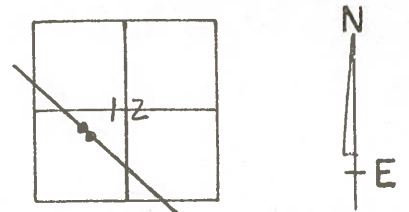
TYPE MONUMENT Ⓐ = PK Nail Ⓑ = PK Spk.

ON SURFACE - BELOW Surface

LEFT - ☉ PAV'T. - RIGHT

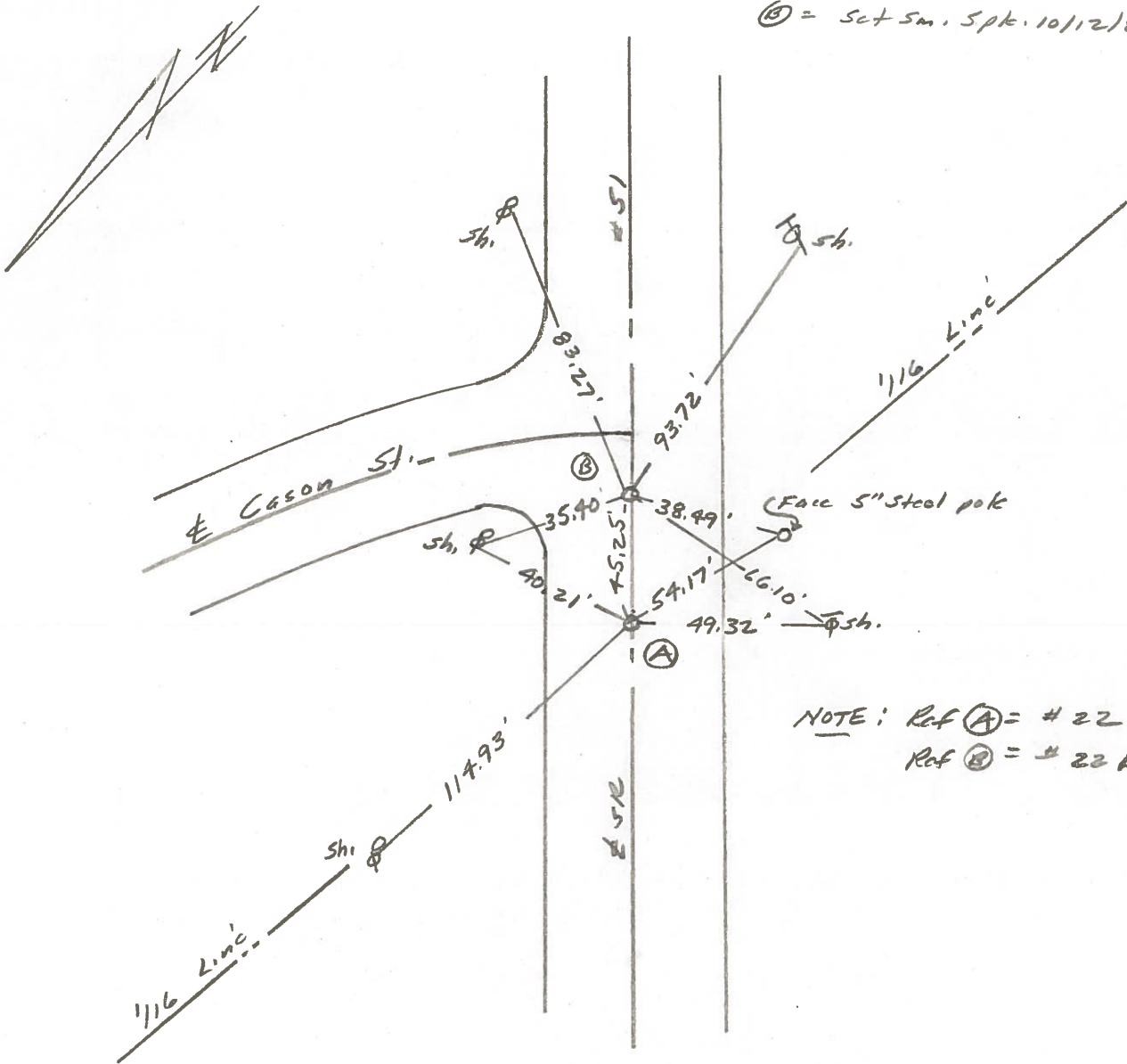
 TO EDGE PAVEMENT

S.L.M. Ⓐ = 216+93 Ⓑ = 217+38



Ⓐ = Set PK Nail 10/12/88 IRS

Ⓑ = Set Sm. Spk. 10/12/88 IRS



NOTE: Ref Ⓐ = # 22
Ref Ⓑ = # 22 A

O.D.O.T. DISTRICT 2 SURVEY OFFICE

Sht. 14 of 23

S-R-51

County WOOD

Date 6-8-78

Township _____

Weather CLOUDY

Section _____

Temp. +70°

T N, R E

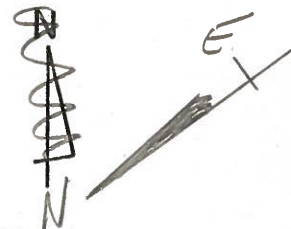
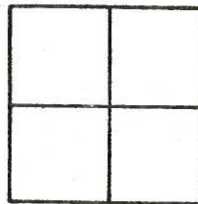
Personnel BURNSIDE

SMITH

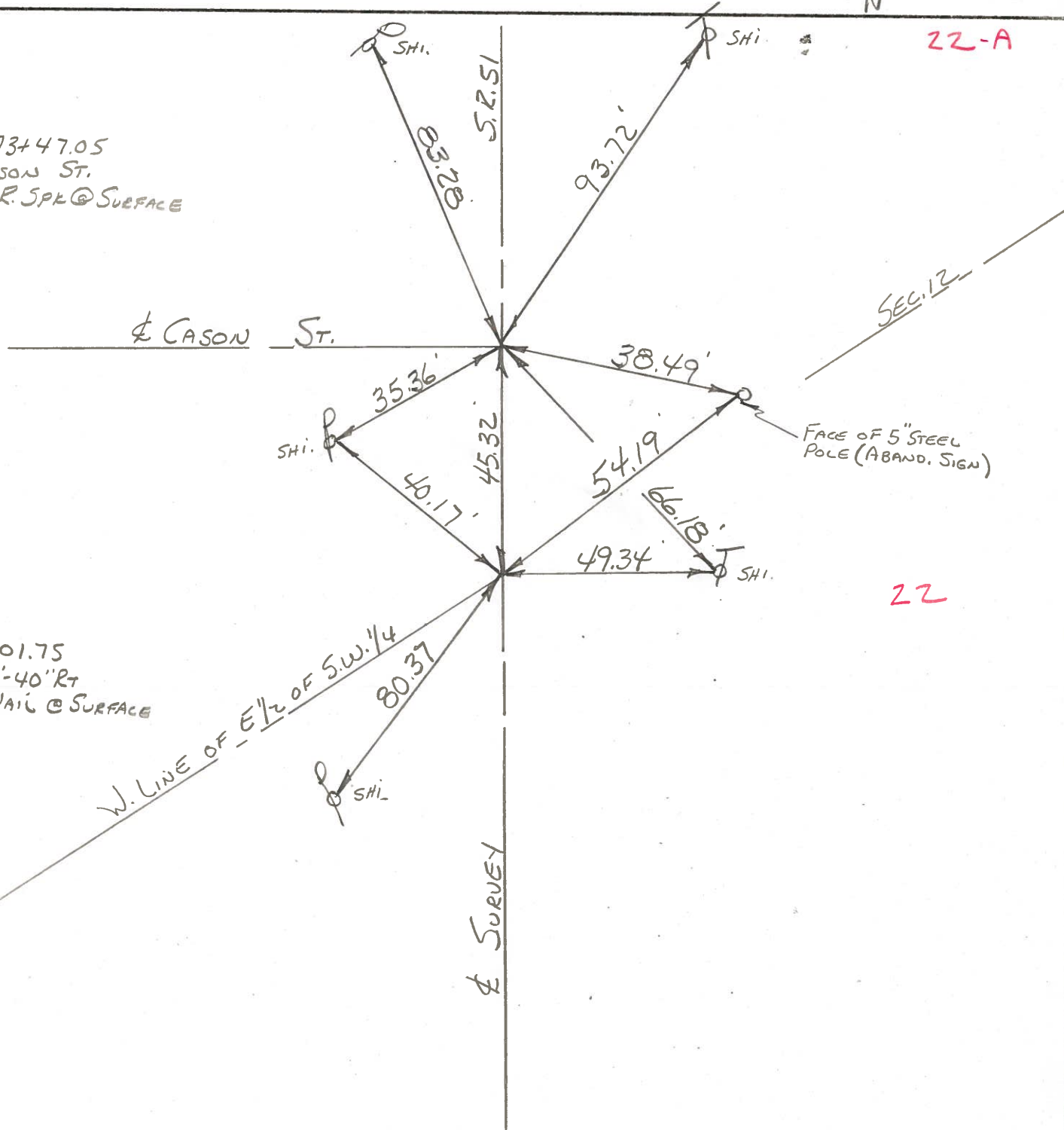
BOWERS

KNAPP

MEAD



STA. 173+47.05
¢ CASON ST.
FD. R.R. SPK @ SURFACE



22-A

22

STA. 173+01.75
Δ = 0°-00'-40" RT
FD. P.K. NAIL @ SURFACE

W. LINE OF E 1/2 OF S.W. 1/4

¢ SURVEY

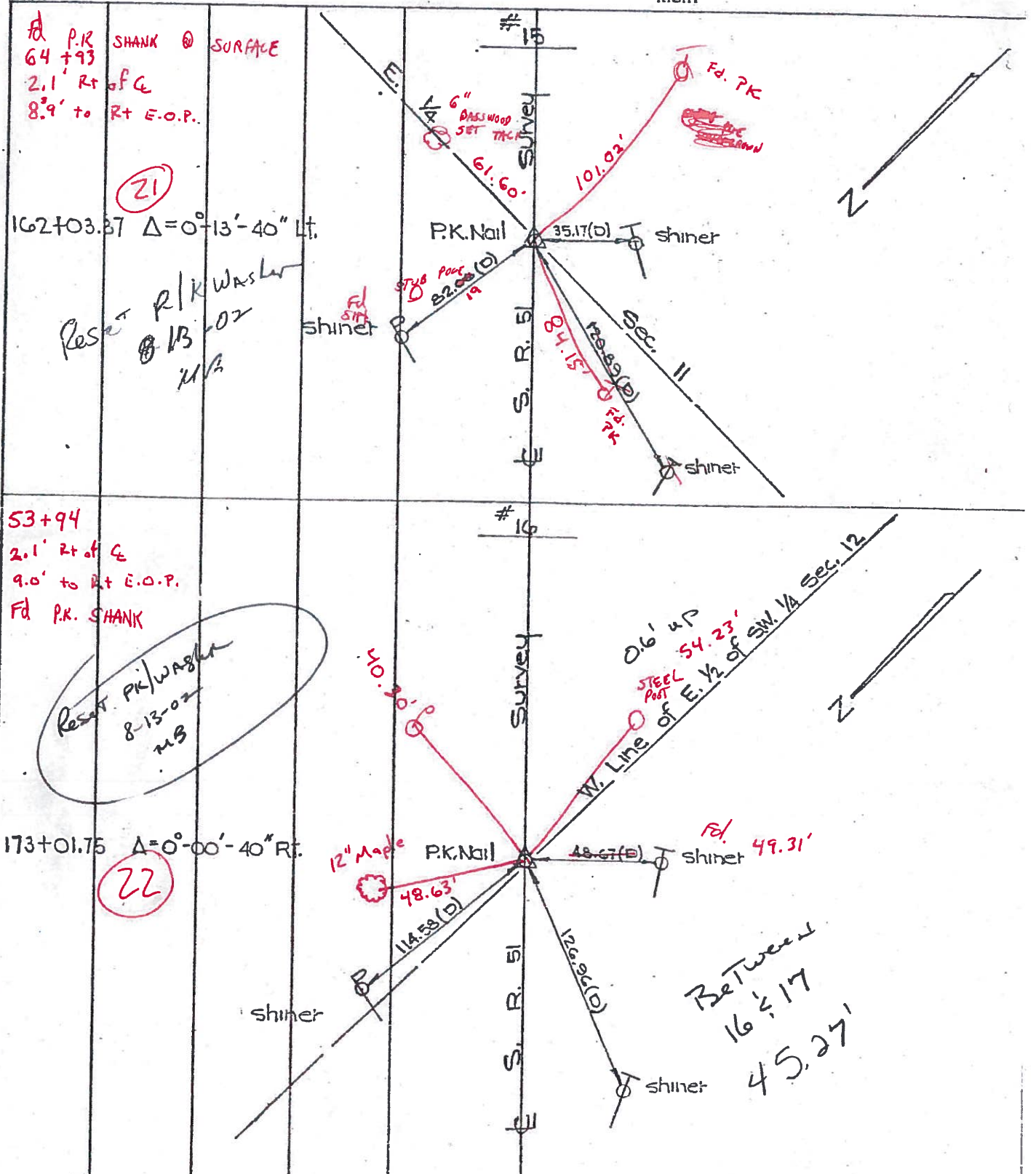
PERSONNEL	TITLE	PERSONNEL	TITLE
W. Denno			
D. Curtis			
J. Teni			

COUNTY Wood DATE Mar. 2, 1971

S. R. 51 WEATHER Sunny-mild

SEC. _____ TEMP. 35° ±

DESCRIPTION References To Control Points-S.R. 51 (Woodville Rd) JOB NO. 02837 (0)



15.3'

PERSONNEL TITLE PERSONNEL TITLE COUNTY Wood DATE 8-20-50
 S. R. #120 51 WEATHER _____
 SEC. B-14 B-2 TEMP. _____

DESCRIPTION	LEFT	CENTER LINE	RIGHT	JOB NO.
Sta. 205+85.50 (21) #306			N.W. to shiner in P.P. 85.53 E. to shiner in P.P. 34.69' S. to shiner in T.P. 34.90'	
Sta. 216+83.60 (22) #307			N.N.E. to shiner in P.P. 36.60' S. to N. cor. of step of bldg. 68.23' S.S.W. to shiner in 20" Elm 67.18' N.N.W. to shiner in P.P. 80.51' S.S.W. to shiner in T.P. 48.55'	
Sta. 234+76.75 Aibright Rd. (25) #308			N. to shiner in P.P. 54.17' E. to shiner in P.P. 36.86' S.S.W. to shiner in P.P. 41.92'	
Sta. 247+33.60 Ayers Rd. (25) #309			N.N.W. to shiner in P.P. 38.10' S.E. to shiner in 16" Elm 65.02 S.S.W. to shi. in cable pole 44.00	
Sta. 253+63.30 Hille Drive, Set P.K. nail (9-15-55) (26) #310			N. to shiner in P.P. 59.94' S.E. to shi. in cable pole 101.22' W.S.W. to E/w mon. 35.28' S.W. to shi. in cable pole 53.13' S.E. to shi. in P.P. 80.32'	