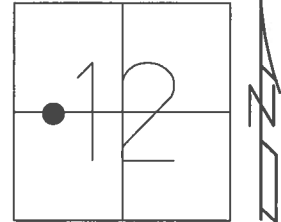


O.D.O.T. DISTRICT 2 SURVEY OFFICE (USE ONLY)

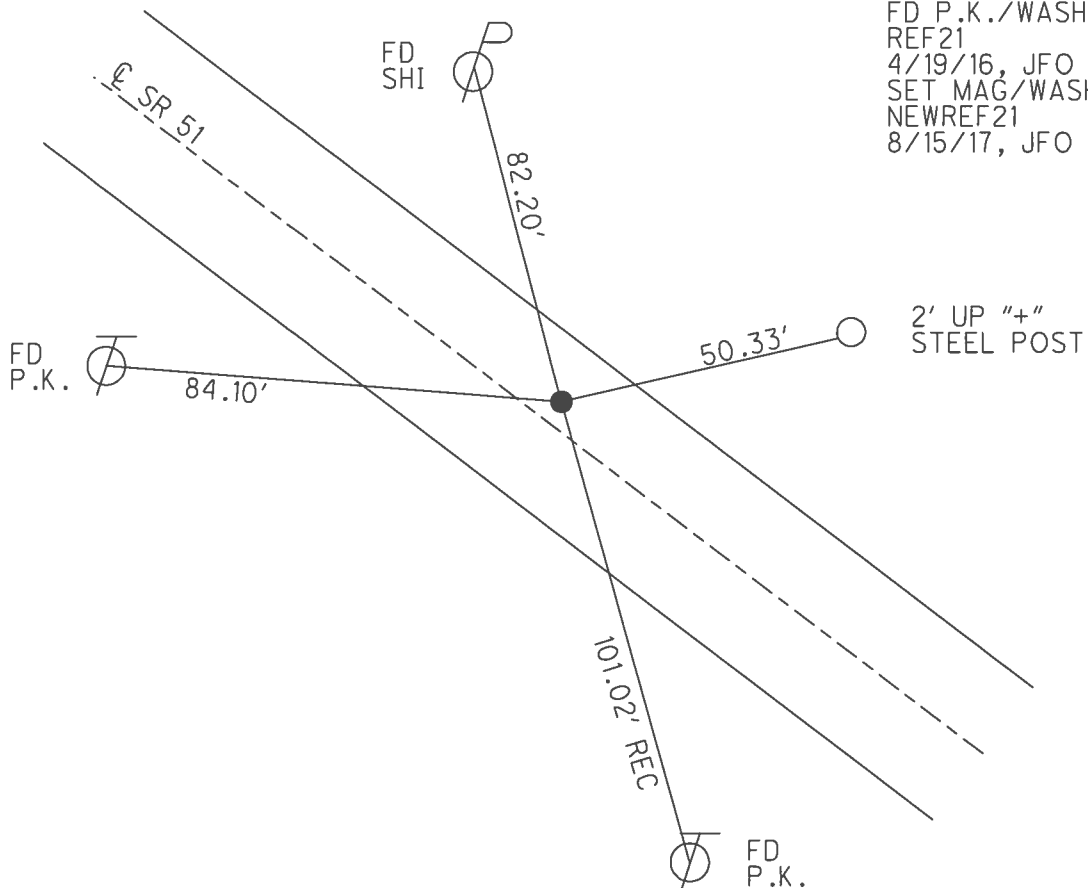
PERSONNEL \_\_\_\_\_ REFERENCE NO. 21 SHEET 12 OF 30  
 NOTES RHOADES DATE 4/19/16 ROUTE SR 51  
 H.C. O'DONNELL WEATHER CLOUDY COUNTY WOOD  
 R.C. RHOADES TEMP. 50° TOWNSHIP LAKE  
 \_\_\_\_\_ SECTION 12  
 \_\_\_\_\_ T 7 N R 12 E

TYPE MONUMENT P.K./WASHER  
 ON SURFACE - ~~BELOW~~ ON \_\_\_\_\_  
~~LEFT~~ - Q PAV'T - RIGHT 2.1'  
8.9' TO RT EDGE PAVEMENT  
 S.L.M. 64+93



GRID: NORTHING: 698690.025 EASTING: 1713260.398

RECORD: 1971  
 $\Delta = 0^{\circ}13' 40' \text{ LT}$   
 STA. 162+03.87  
 FD P.K.SHANK  
 5/22/02, MB  
 SET P.K./WASHER  
 8/13/02, MB  
 FD P.K./WASHER  
 REF21  
 4/19/16, JFO  
 SET MAG/WASHER  
 NEWREF21  
 8/15/17, JFO



# O.D.O.T. DISTRICT 2 SURVEY OFFICE

PERSONNEL

REFERENCE NO. 21

SHEET 11 OF 23

NOTES M. BARNHISEL

H.C. M. CANTERBURY

R.C. C. BRUNDAUGH

DATE 5-22-02

WEATHER SUNNY

TEMP. 44.6°

ROUTE SR-51

COUNTY Lake

TOWNSHIP LAKE

SECTION 12

T 7 N R 12 E

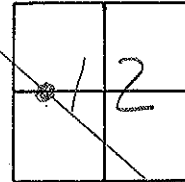
TYPE MONUMENT P.K. SHANK

ON SURFACE - BELOW ON

LEFT - 6 PAV'T. - RIGHT 2.1'

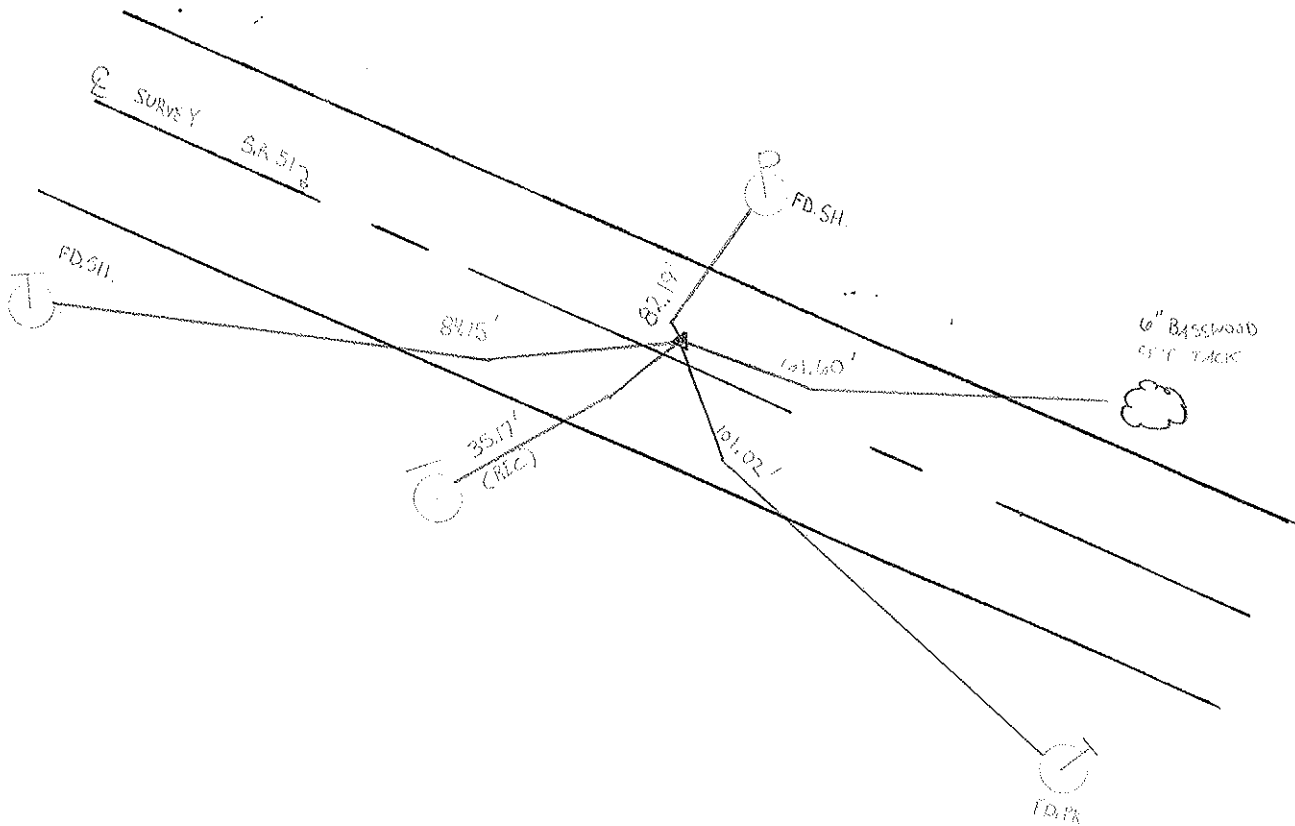
8.9' TO RT. EDGE PAVEMENT

S.L.M. 64+93



SET PK & WASHER  
8-13-02  
M.B.

Record! 1971 # 15  
162+03.87  
 $\Delta = 0^{\circ}-13'-40''$  Lt.



# O.D.O.T. DISTRICT 2 SURVEY OFFICE

PERSONNEL

REFERENCE NO. 21

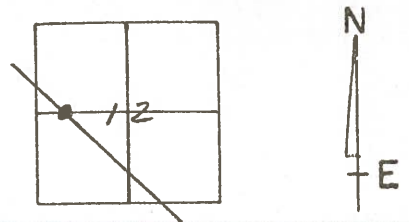
SHEET 13 OF     

NOTES 1. Stone  
 H.C. D. Curtis  
 R.C. J. Hauscholder  
R. Michalak

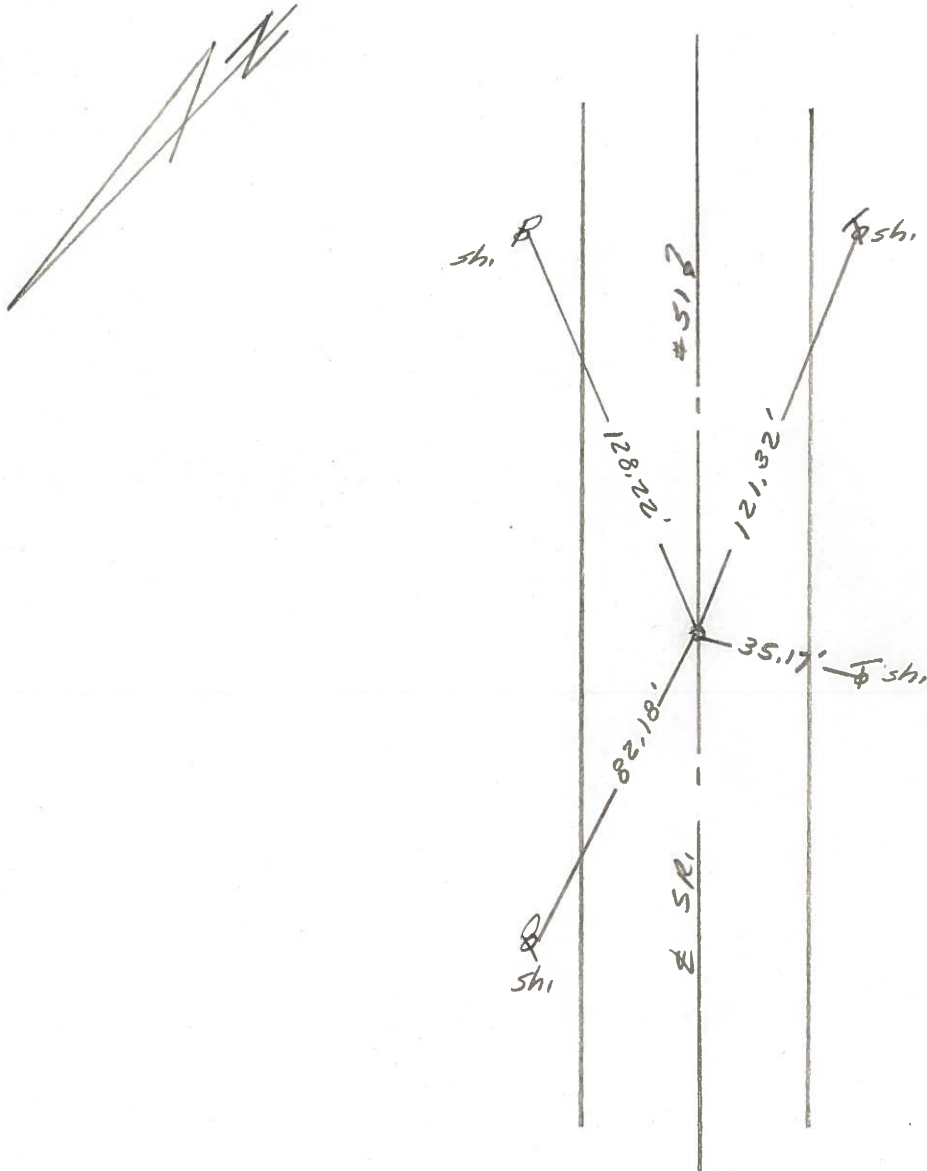
DATE 26 Feb. 86  
 WEATHER Cloudy  
 TEMP. 20°

ROUTE SR#51  
 COUNTY Wood  
 TOWNSHIP Lake  
 SECTION 12  
T 7 N R 12 E

TYPE MONUMENT PK Nail  
 ON SURFACE - BELOW Surface  
 LEFT - &#160; PAW'T. - RIGHT       
     TO      EDGE PAVEMENT  
 S.L.M. 205+93



*Set PK Nail 10/12/88 1RS*



OD.O.T. DISTRICT 2 SURVEY OFFICE

Sht. 13 of 23

S-R-51

County Wood

Date 6-8-78

Township \_\_\_\_\_

Weather Cloudy

Section \_\_\_\_\_

Temp. +70°

T    N, R    E

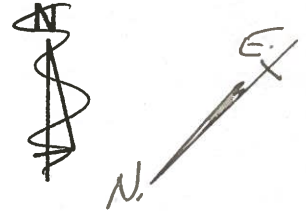
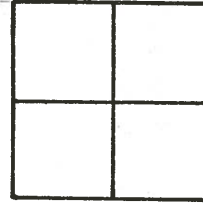
Personnel BURNSIDE

SMITH

BOWERS

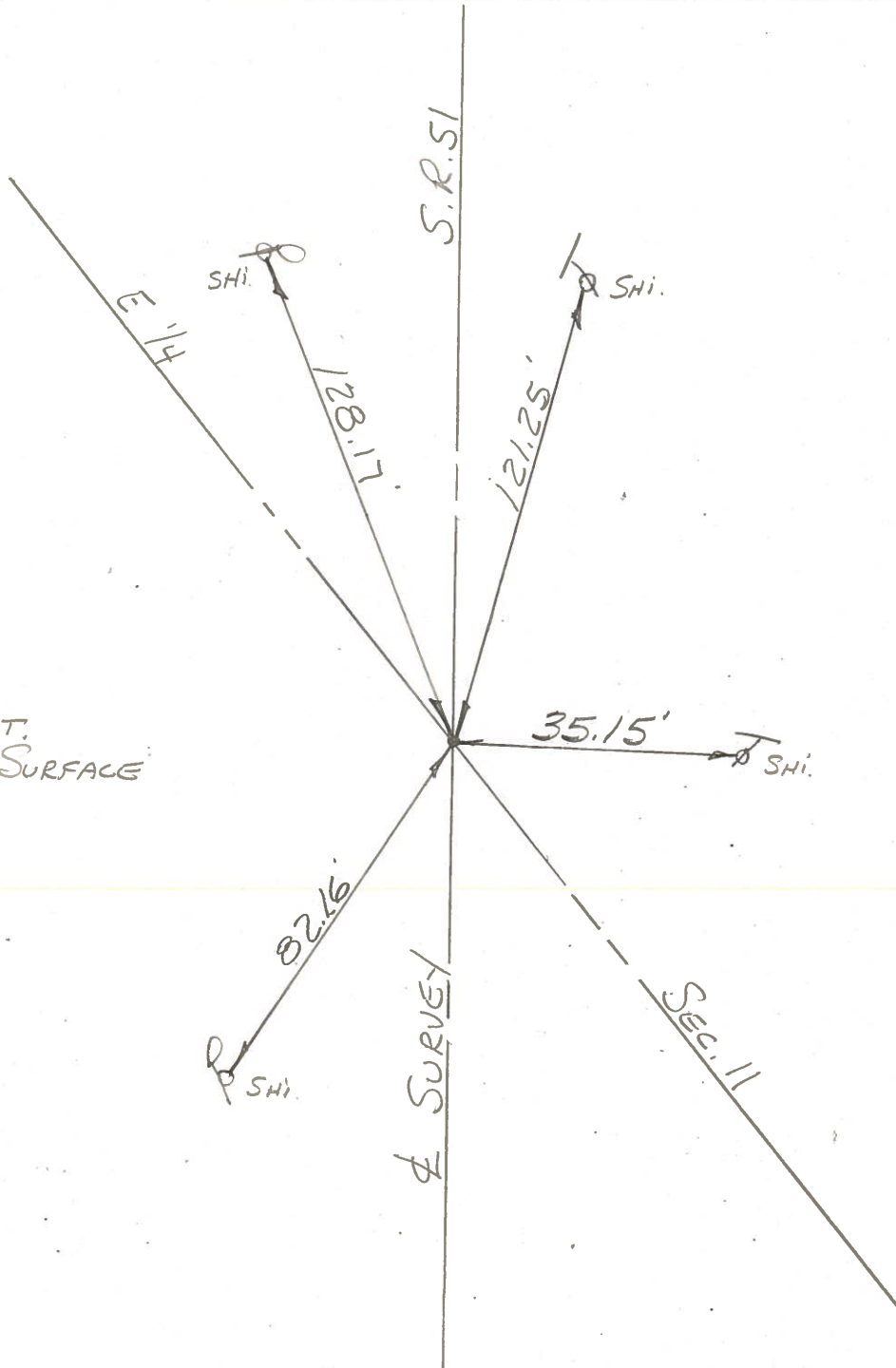
KNAPE

MEAD



21

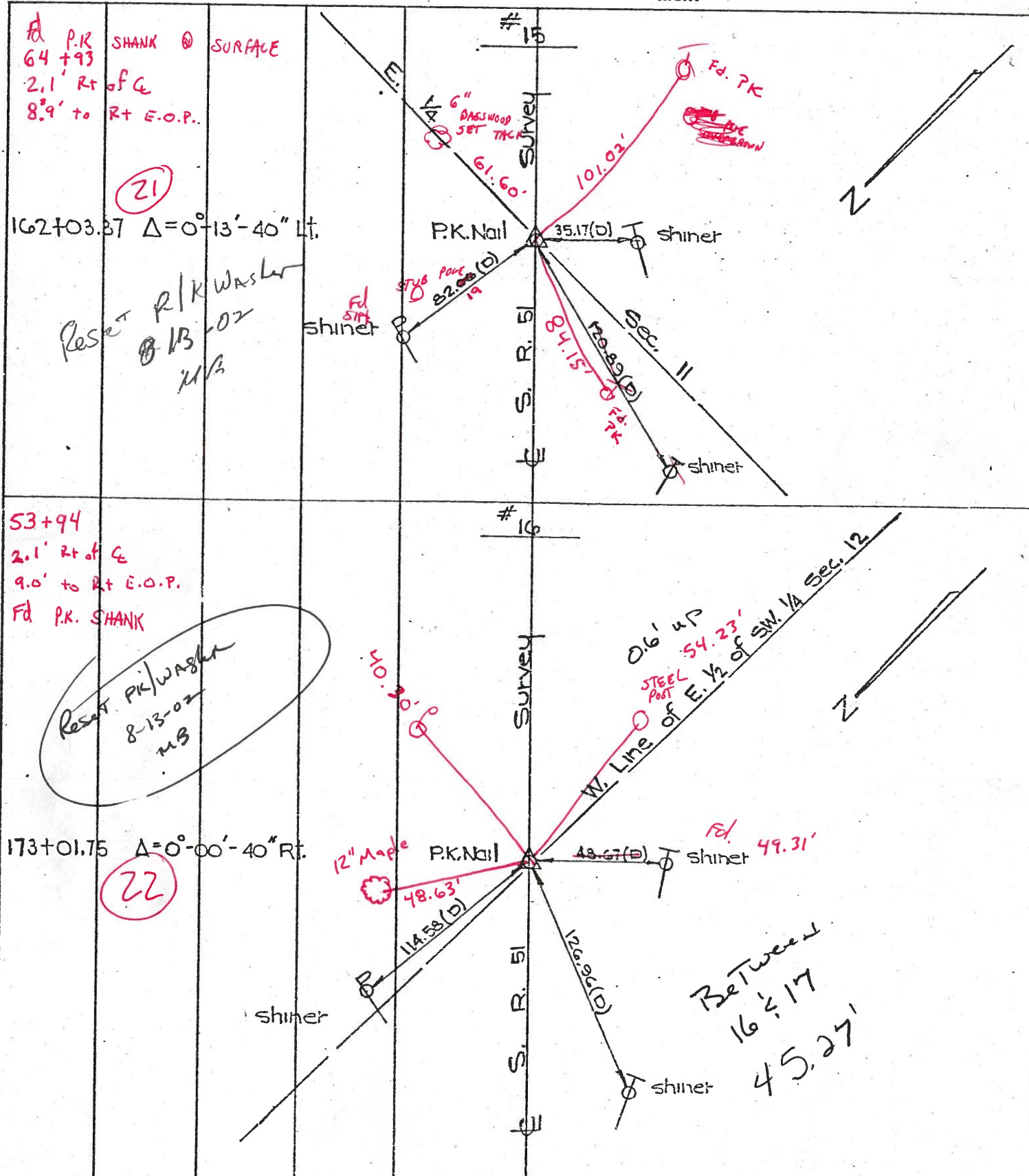
STA. 162+03.37  
A = 0°-13'-40" LT.  
FD P.K. NAIL @ SURFACE



PERSONNEL	TITLE	PERSONNEL	TITLE
W. Denno			
D. Curtis			
J. Teni			

COUNTY Wood DATE Mar. 2, 1971  
 S. R. 51 WEATHER Sunny-mild  
 SEC. \_\_\_\_\_ TEMP 35° ±

DESCRIPTION References To Control Points-S.R. 51 (Woodville Rd) JOB NO. 02837 (a)



PERSONNEL TITLE PERSONNEL TITLE

COUNTY Wood DATE 8-20-50S. R. #120 51 WEATHERSEC. B-14 B-2 TEMP.

DESCRIPTION LEFT CENTER LINE RIGHT JOB NO.

Sta. 205+85.50

(21)

#306

N.W. to shiner in P.P. 85.53'  
 E. to shiner in P.P. 34.69'  
 S. to shiner in T.P. 34.90'

Sta. 216+83.60

(22)

#307

N.N.E. to shiner in P.P. 36.60'  
 S. to N. cor. of step of bldg. 68.23'  
 S.S.W. to shiner in 20" Elm 67.18'  
 N.N.W. to shiner in P.P. 80.51'  
 S.S.W. to shiner in T.P. 48.55'

Sta. 234+76.75  
Albright Rd.

#308

N. to shiner in P.P. 54.17'  
 E. to shiner in P.P. 36.86'  
 S.S.W. to shiner in P.P. 41.92'

Sta. 247+33.60  
Ayers Rd.

(25)

#309

N.N.W. to shiner in P.P. 38.10'  
 S.E. to shiner in 16" Elm 65.02'  
 S.S.W. to shi. in cable pole 44.00'

Sta. 253+63.30

Hille Drive,  
Set P.K. nail (9-15-55)

(26)

#310

N. to shiner in P.P. 59.94'  
 S.E. to shi. in cable pole 101.22'  
 W.S.W. to R/W mon. 35.28'  
 S.W. to shi. in cable pole 53.13'  
 S.E. to shi. in P.P. 80.32'