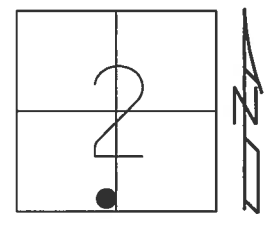


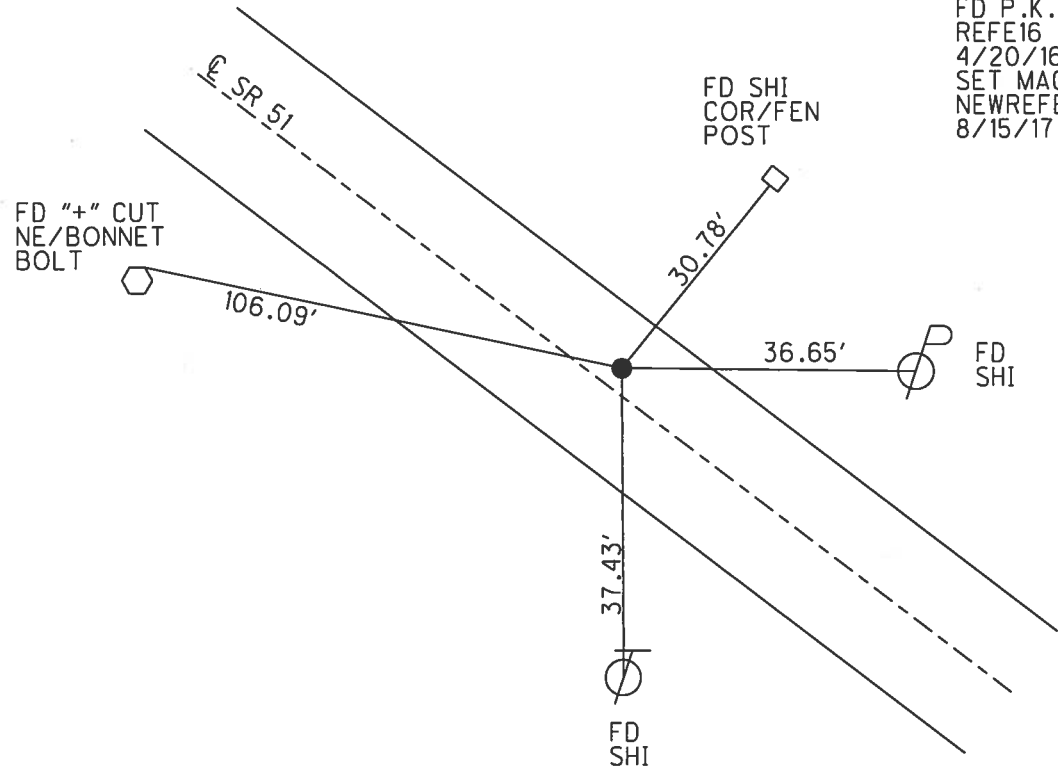
O.D.O.T. DISTRICT 2 SURVEY OFFICE (USE ONLY)

PERSONNEL _____ REFERENCE NO. 16 E SHEET 19 OF 30
 NOTES RHOADES DATE 4/20/16 ROUTE SR 51
 H.C. O'DONNELL WEATHER SUNNY COUNTY WOOD
 R.C. RHOADES TEMP. 50° TOWNSHIP LAKE
 _____ SECTION 2
 _____ T 7 N R 12 E

TYPE MONUMENT P.K./WASHER
 ON SURFACE - ~~BELOW~~ ON _____
~~LEFT~~ - Q PAV'T - RIGHT 2.2'
9.5' TO RT EDGE PAVEMENT
 S.L.M. 110+11
 GRID: NORTHING: 701759.652 EASTING: 1709945.075



RECORD: 1971
 $\Delta = 0^\circ 32' RT$
 STA. 116+85.61
 FD P.K./WASHER
 5/22/02, MB
 SET P.K./WASHER
 8/14/02, MB
 FD P.K./WASHER
 REFE16
 4/20/16, JFO
 SET MAG/WASHER
 NEWREFE16
 8/15/17, JFO



O.D.O.T. DISTRICT 2 SURVEY OFFICE

PERSONNEL

REFERENCE NO. 16-E

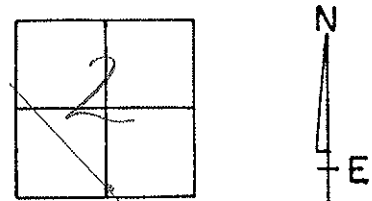
SHEET 17 OF 23

NOTES M. BARNHISEL
 H.C. M. CANTERBURY
 R.C. C. BRUMBAUGH
 FLAG B. MALINSKI

DATE 5-22-02
 WEATHER SUNNY
 TEMP. +55°F

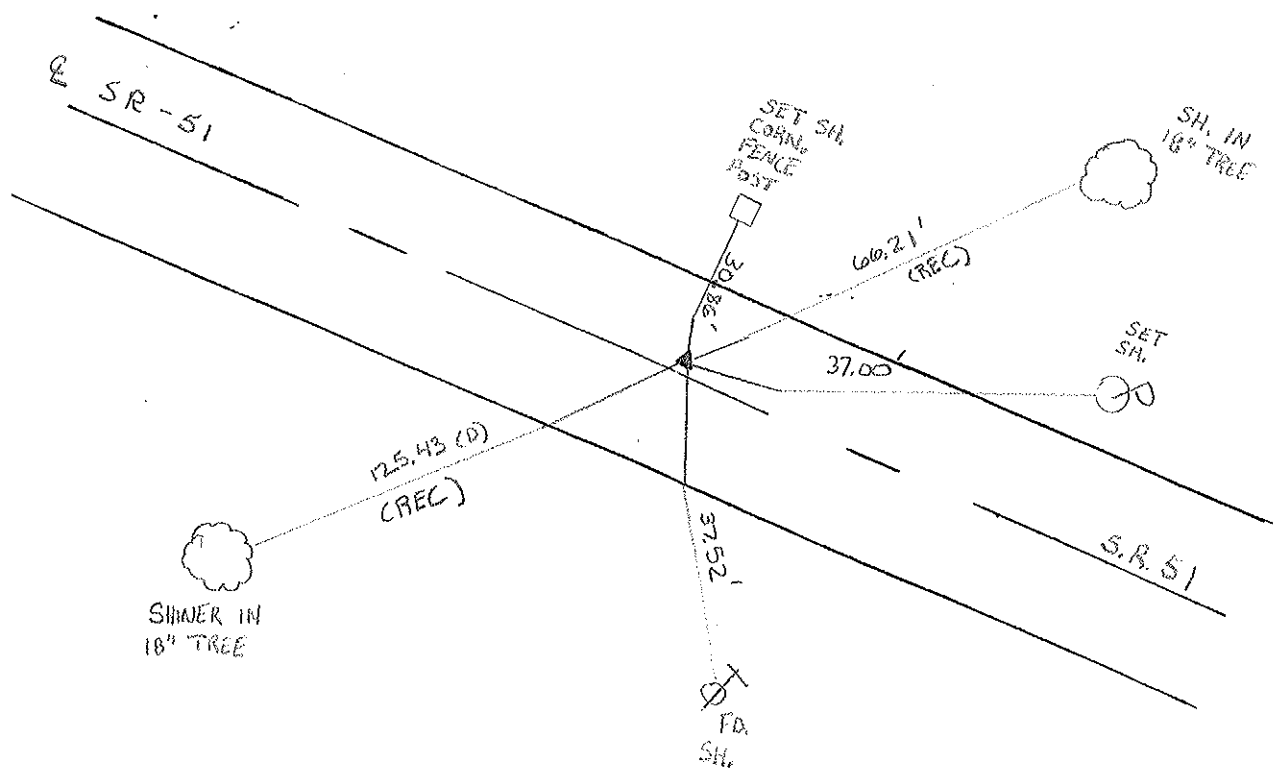
ROUTE SR-51
 COUNTY WOOD
 TOWNSHIP LAKE
 SECTION 2
 T 7 N R 12 E

TYPE MONUMENT PK/WASHER
 ON SURFACE - ~~BELOW~~ DN
~~LEFT~~ PAV'T. ~~RIGHT~~ 2.2'
9.5' TO RT. EDGE PAVEMENT
 S.L.M. 110+11



Records: 1971 # 9
 116+85.61 Δ: 0°-32' RT.

SET PK/WASHER
 8-14-02
 ARC
 JKA



O.D.O.T. DISTRICT 2 SURVEY OFFICE

PERSONNEL

REFERENCE NO. 16-E

SHEET 7 OF

NOTES 1. Stone

H.C. D. Curtis

R.C. J. Haushalter

R. Michalek

DATE 25 Feb. 86

WEATHER Cool

TEMP. 26°

ROUTE SR #51

COUNTY Wood

TOWNSHIP Lake

SECTION 2

T 7 N R 12 E

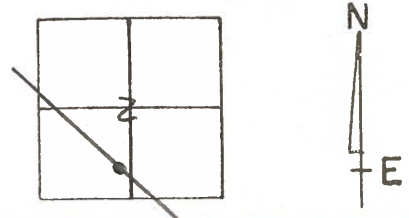
TYPE MONUMENT PK Nail

ON SURFACE - BELOW Surface

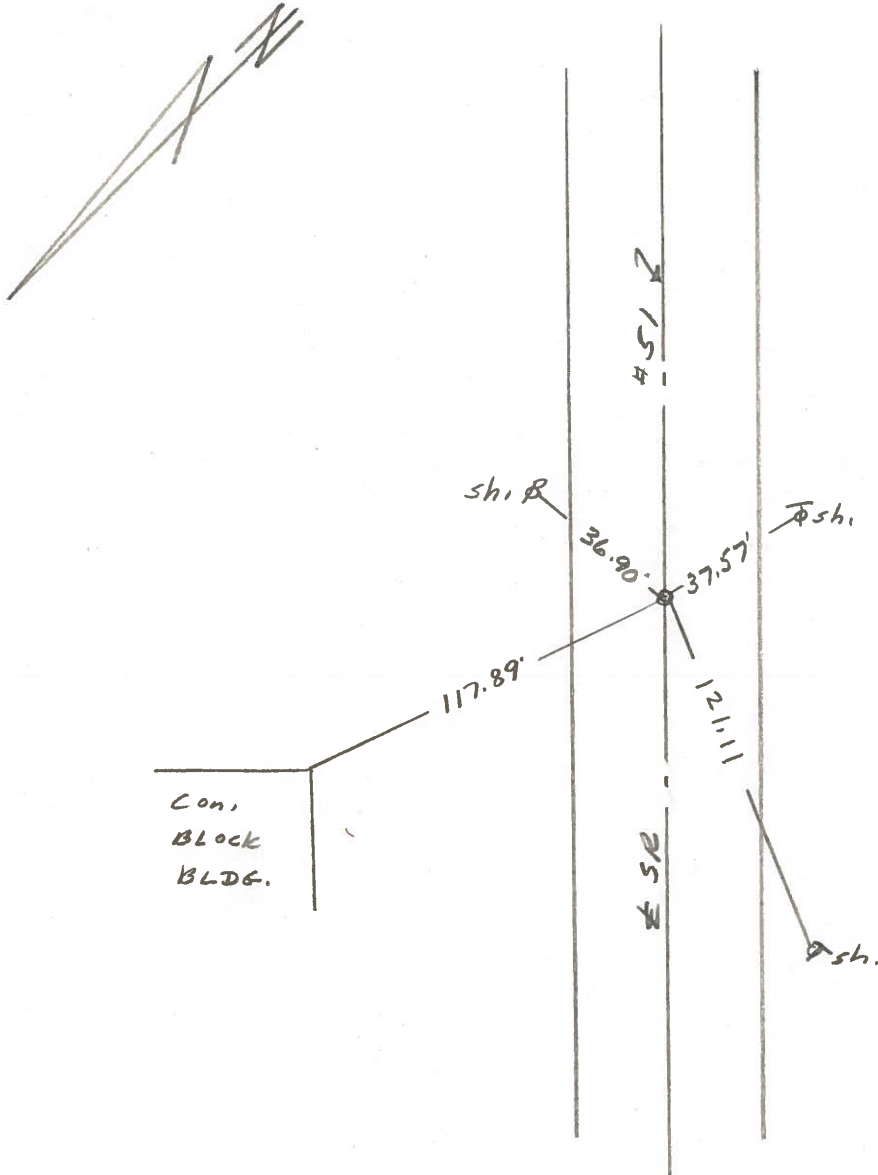
LEFT - & PAV'T. - RIGHT

 TO EDGE PAVEMENT

S.L.M. 160474



Set PK Nail 10/12/88 IRS



O.D.O.T. DISTRICT 2 SURVEY OFFICE

Sht. 7 of 23
S.R. 51

County Wood

Date 6-8-78

Township _____

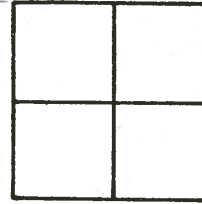
Weather Cloudy

Section _____

Temp. +72°

T N, R E

Personnel BURNSIDE

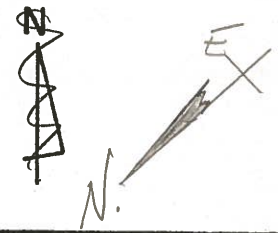


SMITH

BOWERS

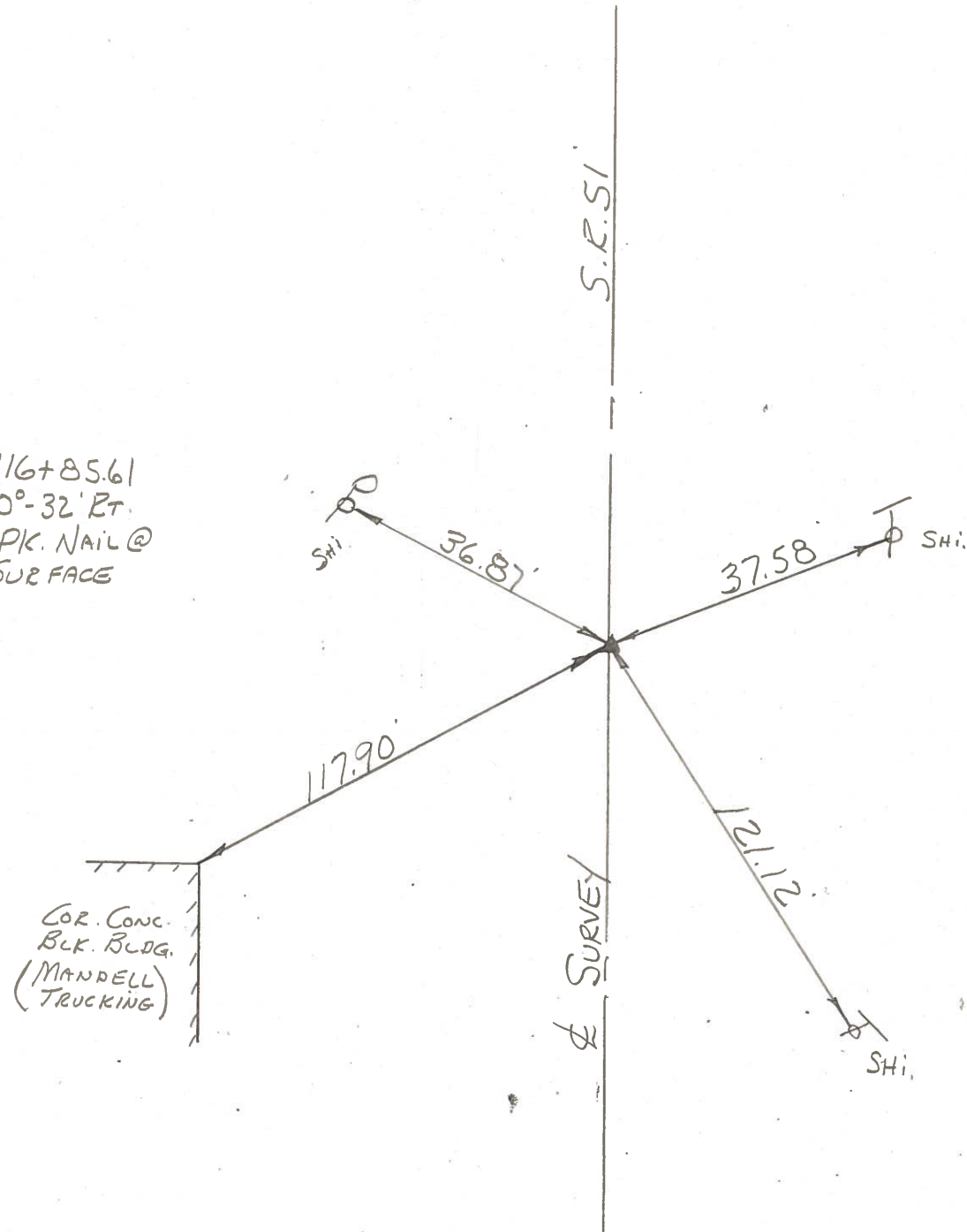
KNAPE

MEAD



16-E

STA. 116+85.61
Δ = 0°-32' RT.
FD. PK. NAIL @
SURFACE

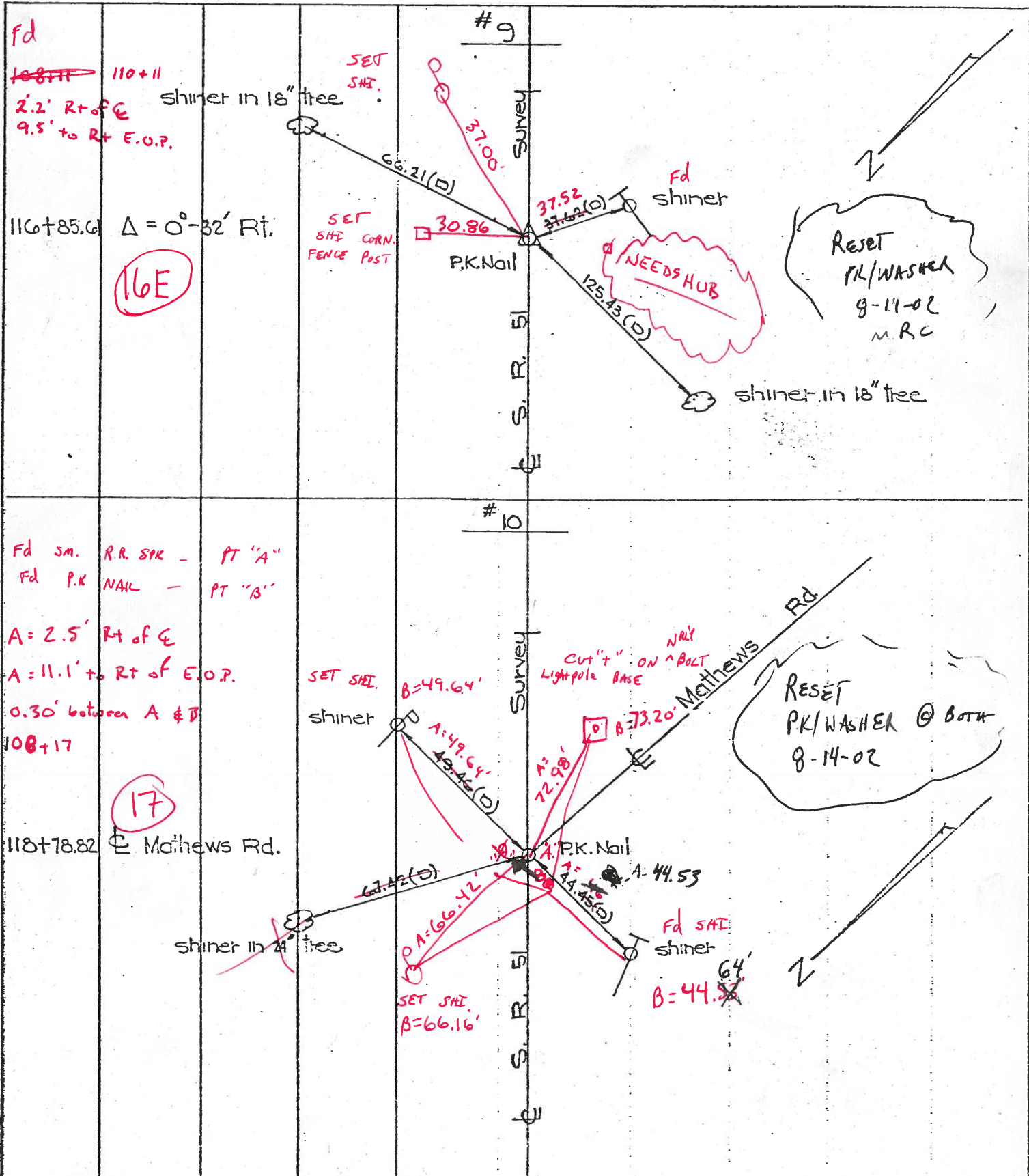


COR. CONC.
BLDG.
(MANDELL
TRUCKING)

PERSONNEL TITLE PERSONNEL TITLE
 W. Denno _____
 D. Curtis _____
 J. Teal _____

COUNTY Wood DATE Mar. 2, 1971
 S. R. 51 WEATHER cloudy-mild
 SEC. _____ TEMP. 35°±

DESCRIPTION References To Control Points - S. R. 51 (Woodville Rd) JOB NO. 02837 (a)



PERSONNEL TITLE PERSONNEL TITLE

COUNTY Wood DATE 8-20-50

S. R. #120 51 WEATHER

SEC. B-1 & B-2 TEMP.

DESCRIPTION LEFT CENTER LINE RIGHT JOB NO.

Sta. 160+66.25

(16E)

#301

N.E. to shiner in P.P. 37.26'
 N.N.E. to shiner in 15" tree 47.20'
 S. to shiner in T.P. 37.72'

Sta. 162+59.65
 Molnar Ed.

(17)

#302

N.N.W. to shiner in P.P. 64.65'
 E. to shiner in P.P. 49.40'
 S.S.W. to shiner in P.P. 56.20'

Sta. 165+77.60
 Walbridge Ed.

(18)

#303

N.N.E. to shiner in P.P. 31.15'
 E. to x-in N. cor. of conc. platform 49.48'
 W. to shiner in T.P. 76.10'
 S. to N. cor. side steel sign post 48.87'

Sta. 189+69.50

(19A)

#304

N. to shiner in P.P. 67.73'
 S. to shiner in 6' box Elder 89.88'
 S.W. to shiner in 10' box elder 24.87'
 W. to shi. in 10' twin maple 81.73'

Sta. 198+76.80
 Stein Ed.

(20)

#305

N. to shiner in P.P. 69.33'
 E. to shiner in P.P. 42.26'
 W. to shiner in T.P. 59.66'
 S.W. to N.E. cor. black pdn. bldg. 92.53'