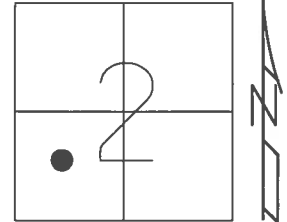


O.D.O.T. DISTRICT 2 SURVEY OFFICE (USE ONLY)

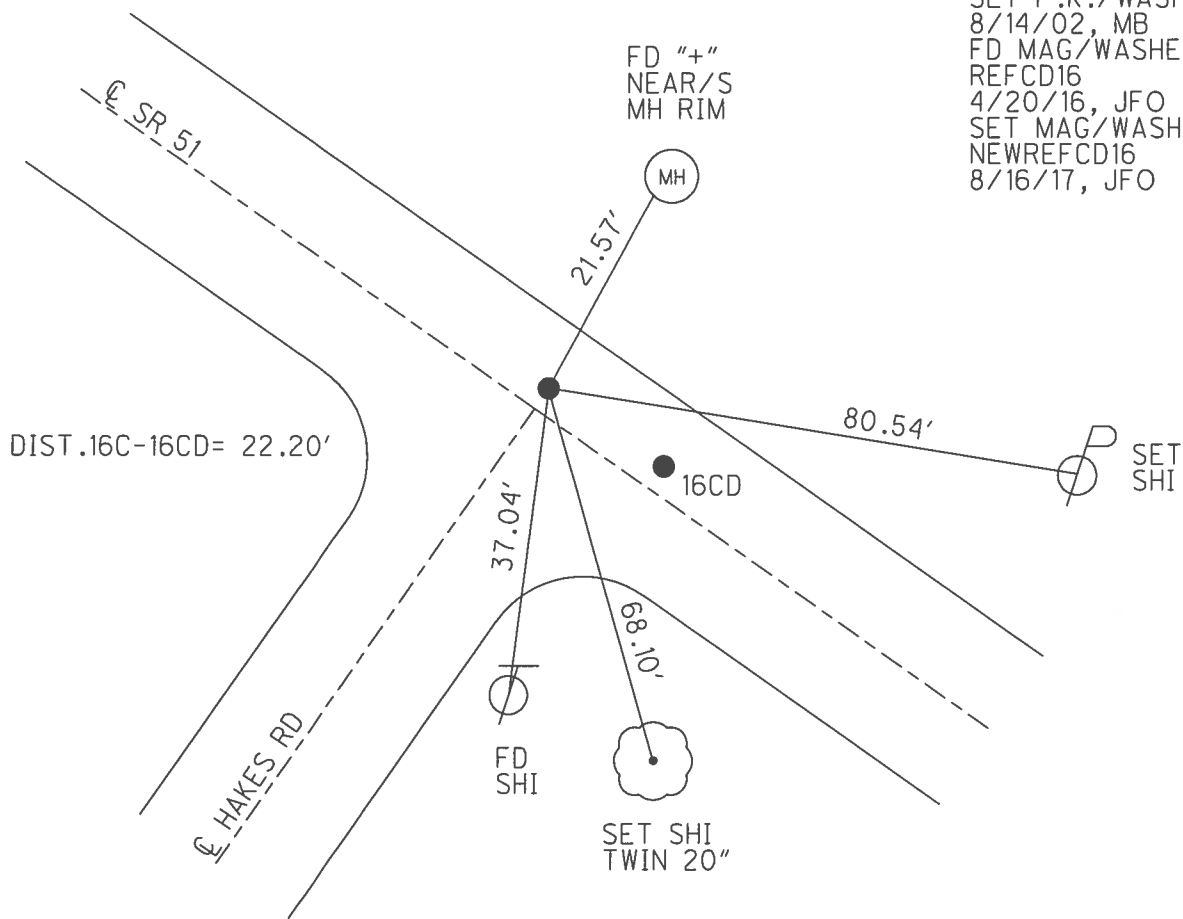
PERSONNEL \_\_\_\_\_ REFERENCE NO. 16 C SHEET 22 OF 30

NOTES RHOADES DATE 4/20/16 ROUTE SR 51  
 H.C. O'DONNELL WEATHER SUNNY COUNTY WOOD  
 R.C. RHOADES TEMP. 58° TOWNSHIP LAKE  
 \_\_\_\_\_ SECTION 2  
 \_\_\_\_\_ T 7 N R 12 E

TYPE MONUMENT MAG/WASHER  
 ON SURFACE - ~~BELOW~~ ON  
~~LEFT~~ - CL PAV'T - RIGHT 2.3'  
9.5' TO RT EDGE PAVEMENT  
 S.L.M. 126+57  
 GRID: NORTHING: 702875.654 EASTING: 1708737.680



RECORD: 1971  
 STA. 100+41.53  
 BRIDGE PROJECT  
 STA. 138+44.41  
 FD P.K. NAIL  
 5/22/02, MB  
 SET P.K./WASHER  
 8/14/02, MB  
 FD MAG/WASHER  
 REFCD16  
 4/20/16, JFO  
 SET MAG/WASHER  
 NEWREFCD16  
 8/16/17, JFO



# O.D.O.T. DISTRICT 2 SURVEY OFFICE

PERSONNEL

REFERENCE NO. 16-C

SHEET 19 OF 23

NOTES M. BARNHISEL

H.C. M. CANTERBURY

DATE 5-22-02

ROUTE SR. 51

R.C. C. BRUMBAUGH

WEATHER SUNNY

COUNTY WOOD

FLAG B. ABALINSKI

TEMP. +48°

TOWNSHIP LAKE

SECTION 2

T 7 N R 12 E

(A) (HAKE'S RD) (B) (SR 51)

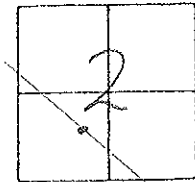
TYPE MONUMENT R.B. SPIKE / PK NAIL

ON SURFACE - BELOW ON (BOTH)

LEFT - PAV'T. - RIGHT 2.3' (BOTH)

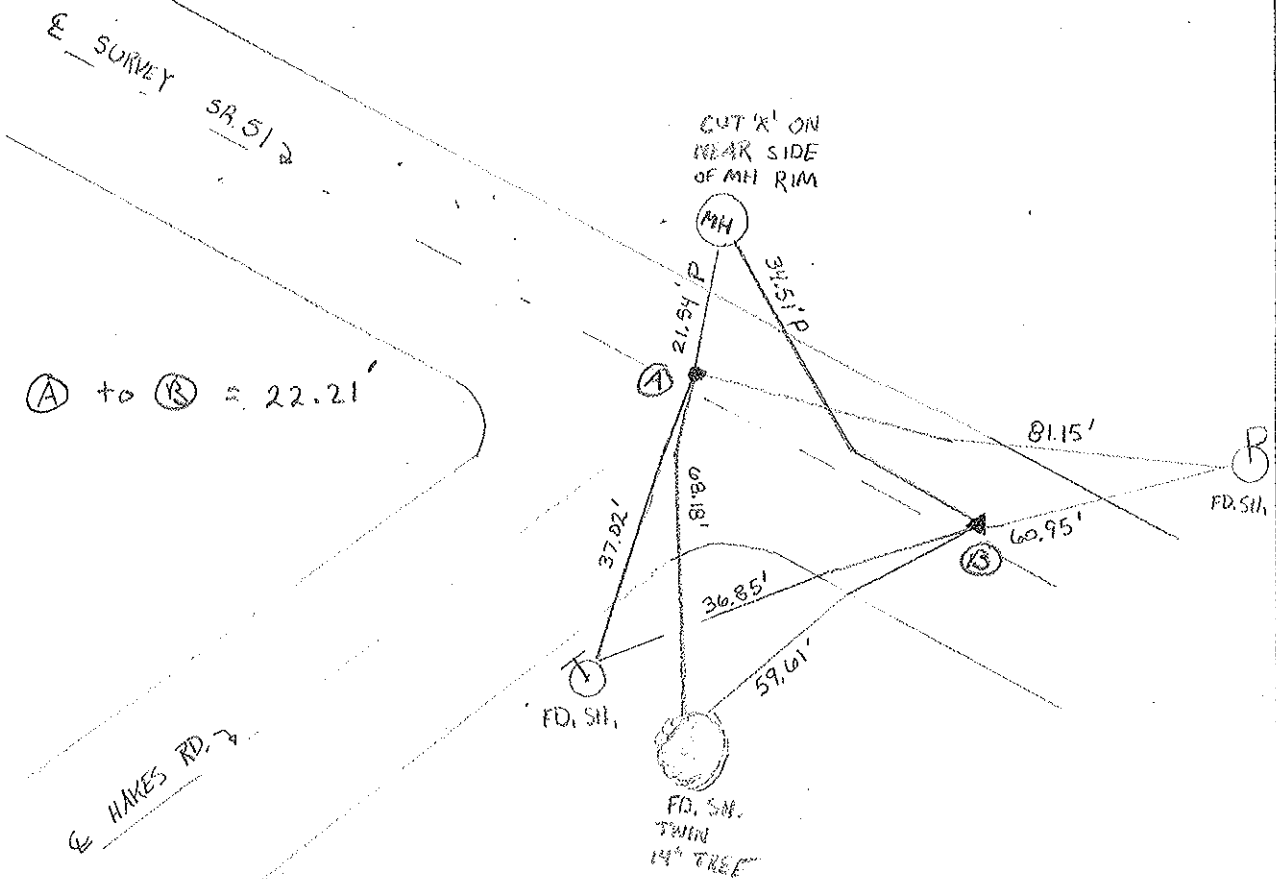
9.5' TO RT. EDGE PAVEMENT (BOTH)

S.L.M. (A) 126+57 (B) 126+35



Records: 1971 # 6 & #7  
 Pt. "A" sta. 100+41.53  
 Pt. "B" sta. 100+63.65, Δ = 00°-12'-00" Rt.

SET PK/WASHER  
 8-14-02  
 M.B.C.  
 JKA



(A) to (B) = 22.21'

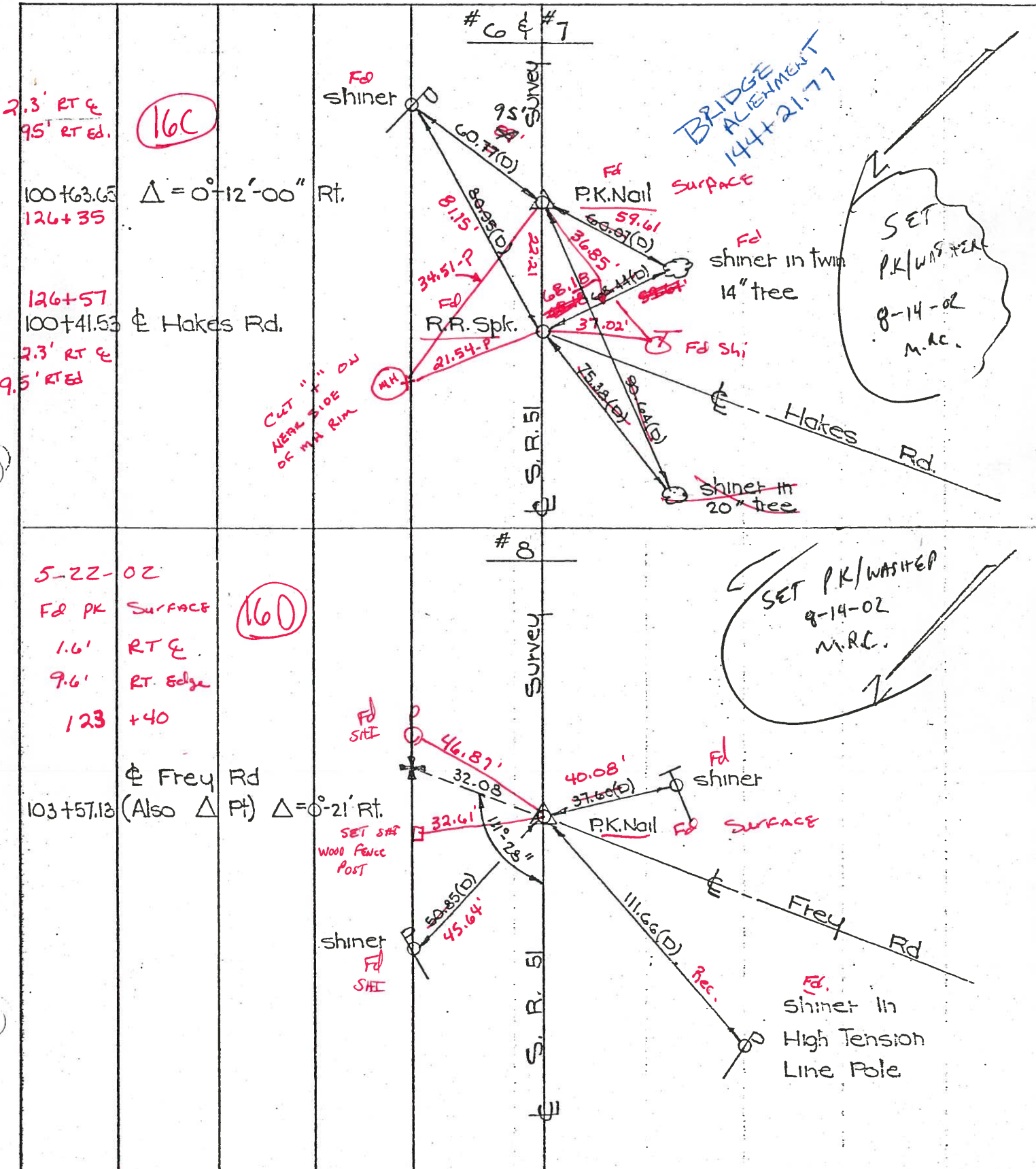
BRIDGE PROJECT: sta 144+21.77

PERSONNEL TITLE PERSONNEL TITLE  
 W. Denno \_\_\_\_\_  
 D. Curtis MB III CB-RC  
 J. Teal AC-14C BM-P

COUNTY Wood DATE Mar 1, 1971  
 S. R. 51 WEATHER Sunny cloudy-cool  
 SEC. \_\_\_\_\_ TEMP. 35° ± +48

DESCRIPTION References To Control Points - S. R. 51 (Woodville Rd) JOB NO. 02837 (C)

LEFT CENTER LINE RIGHT



2.3' RT &  
 9.5' RT Ed.  
 100+63.65  
 126+35  
 126+57  
 100+41.53  
 2.3' RT &  
 9.5' RT Ed

(16C)  
 $\Delta = 0^\circ - 12' - 00''$  Rt.  
 & Hakes Rd.

5-22-02  
 F& PK SURFACE  
 1.6' RT &  
 9.6' RT. Edge  
 123 +40

(16D)  
 & Frey Rd  
 (Also  $\Delta$  Pt)  $\Delta = 0^\circ - 21'$  Rt.

SET PK/WASHER  
 8-14-02  
 M.R.C.

# O.D.O.T. DISTRICT 2 SURVEY OFFICE

PERSONNEL

REFERENCE NO. 16-C

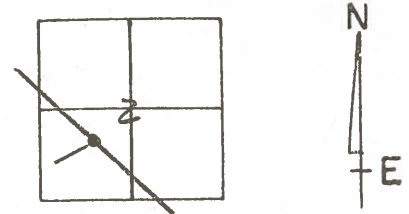
SHEET 5 OF     

NOTES 1. Stone  
 H.C. D. Curtis  
 R.C. J. Hausholder  
R. Michalok

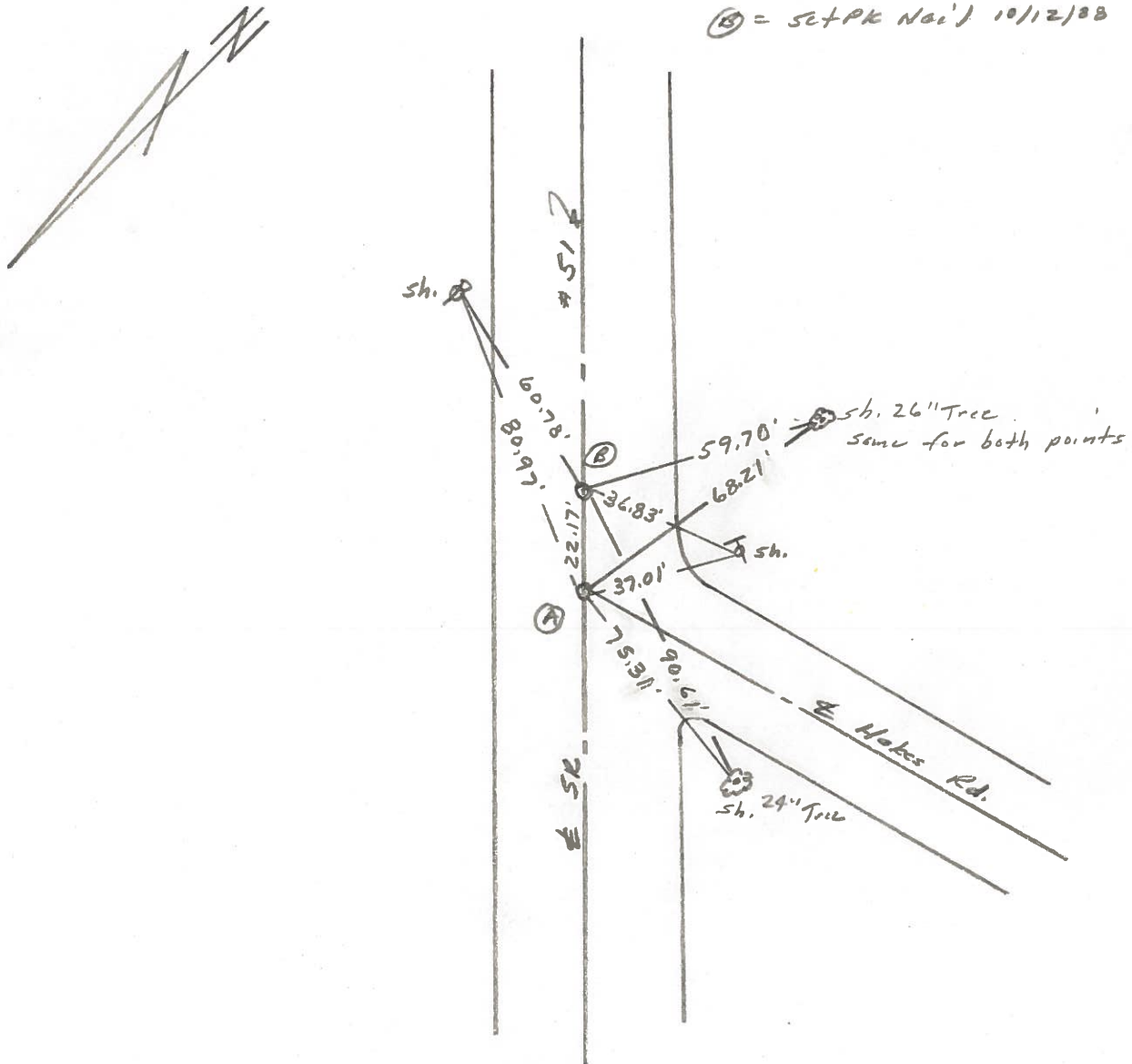
DATE 25 Feb. 86  
 WEATHER Cool  
 TEMP. 26°

ROUTE SR#51  
 COUNTY Wood  
 TOWNSHIP Loke  
 SECTION 2  
T 7 N R 12 E

TYPE MONUMENT A = Spk. B = PK Nail  
 ON SURFACE - BELOW Surface  
 LEFT - &lt;math>\text{C}</math> PAW'T. - RIGHT       
     TO      EDGE PAVEMENT  
 S.L.M. A = 144125 B = 144147



A = Set Small Spk. 10/12/88 IRS  
B = Set PK Nail 10/12/88 IRS



Q.D.O.T. DISTRICT 2 SURVEY OFFICE

Sht. 5 of 23  
*S.R.51*

County WOOD

Date 6-8-78

Township \_\_\_\_\_

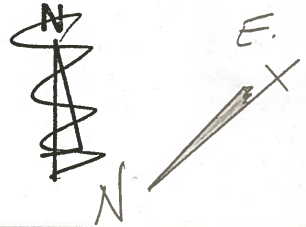
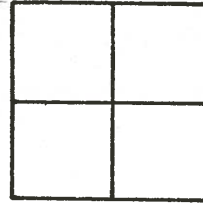
Weather CLOUDY

Section \_\_\_\_\_

Temp. +72°

T N, R E

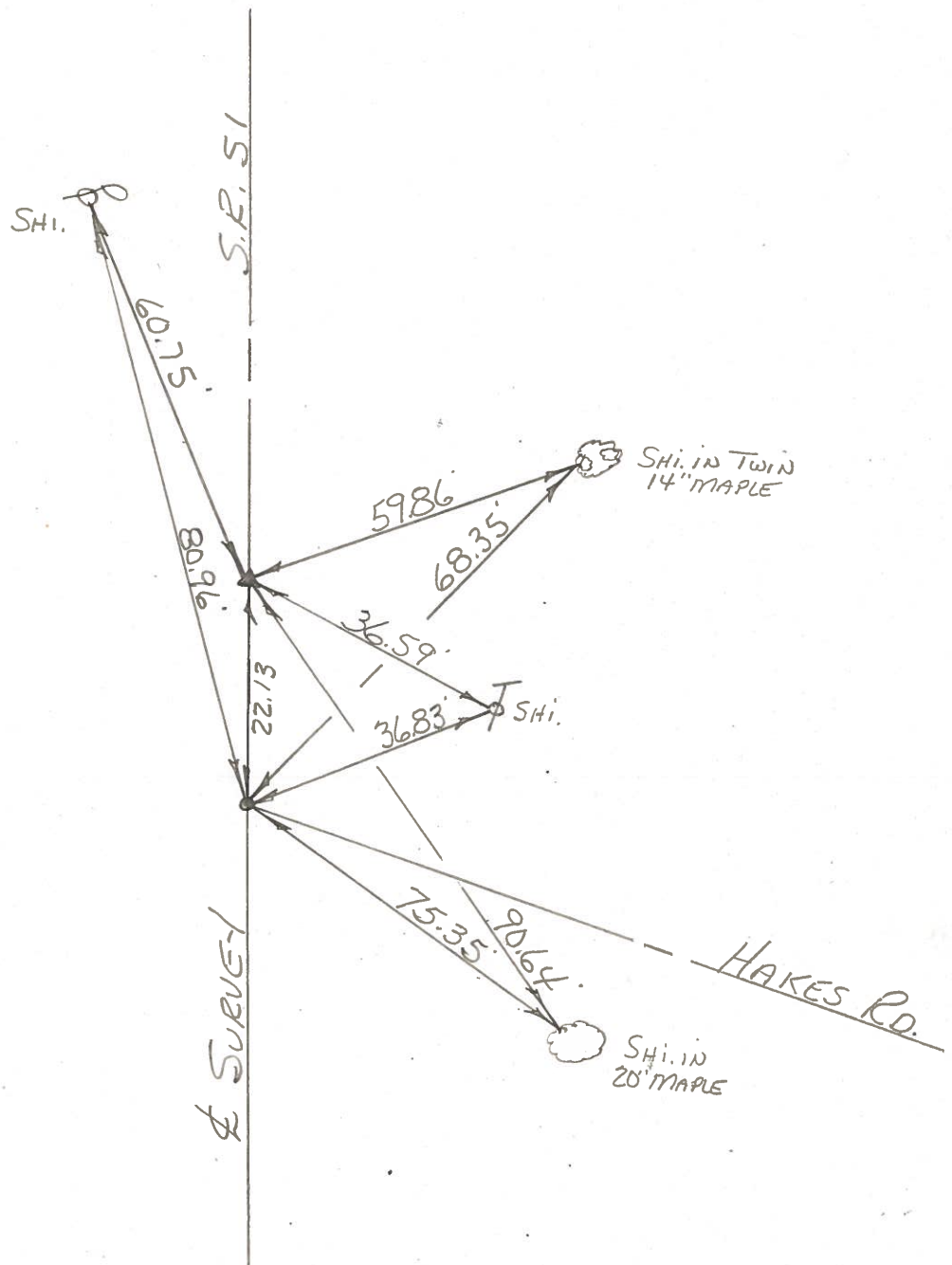
Personnel BURNSIDE  
SMITH  
BOWERS  
KNAPE  
MEAD



*16-C*

.65?  
STA. 100+63.63  
 $\Delta = 0^\circ - 12' - 00''$  Rt.  
FD. P.K. NAIL @ SURFACE

STA. 100+41.53  
HAKES ROAD  
FD. P.R. SPK. @ SURFACE



PERSONNEL TITLE PERSONNEL TITLE

COUNTY Wood

DATE 9-12-61

S. R. #120 51

WEATHER

SEC.

TEMP.

DESCRIPTION

LEFT

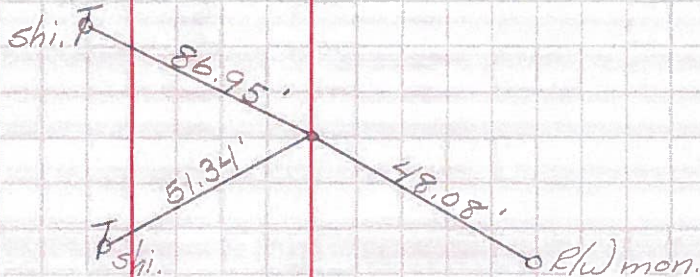
CENTER LINE

RIGHT

JOB NO.

Sta. 92+28.88  
& Williston Rd.  
S.P. #579

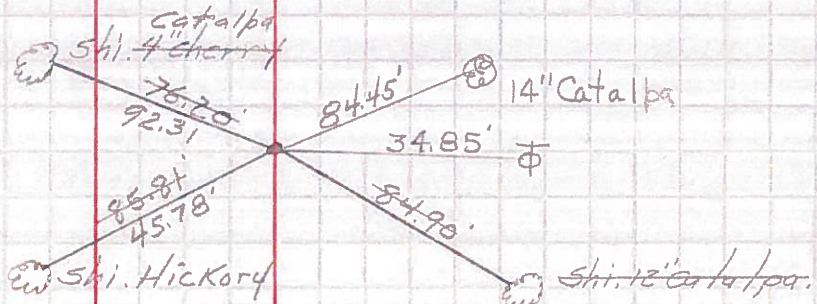
#294



Sta. 108+01.15  
& Owen Rd.  
L 133°01' R.F.  
Conc. nail Fd.  
Set R.R. spk.

15

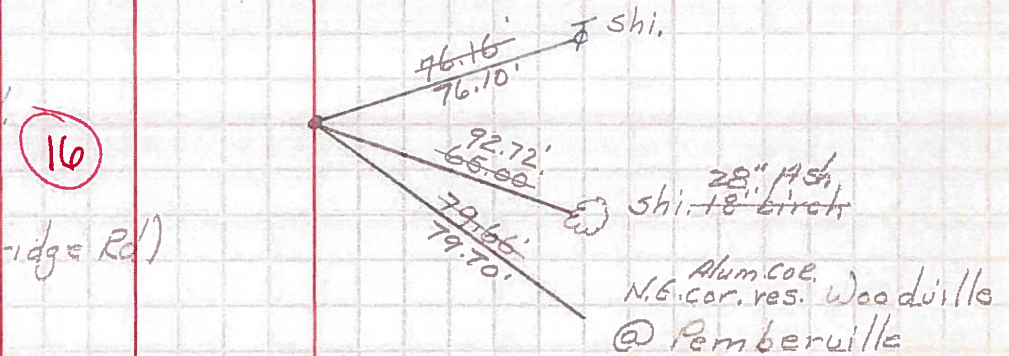
#295



Sta. 126+06.53  
& Pemberville Rd.  
L 133°04' R.F.  
To sec. cor.  
(Pemberville & Wallbridge Rd)  
Conc. nail Fd.  
Set R.R. spk.

16

#296



Sta. 144+21.86  
& Hakes Rd.  
Conc. nail Fd.  
Set R.R. spk.

16C

#905

