

O.D.O.T. DISTRICT 2 SURVEY OFFICE (USE ONLY)

PERSONNEL

REFERENCE NO. 13 A

SHEET 22 OF 22

NOTES BURNSIDE
 H.C. SMITH
 R.C. BOWERS
HOLCOMBE/RIFE

DATE 5/19/69
 WEATHER CLOUDY
 TEMP. 58°

ROUTE SR 51
 COUNTY WOOD
 TOWNSHIP NORTHWOOD
 SECTION 34

DWG BY NIESE PID _____

T 8 N R 12 E

TYPE MONUMENT P.K. NAIL

ON SURFACE - ~~BELOW~~ ON

OFFSET ☉ PAVEMENT ON LT : RT

- TO - EDGE PAVEMENT

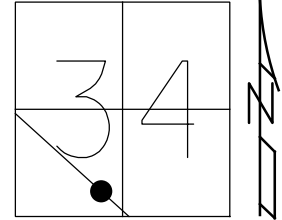
STATION: 187+97

HORZ.DATUM: _____

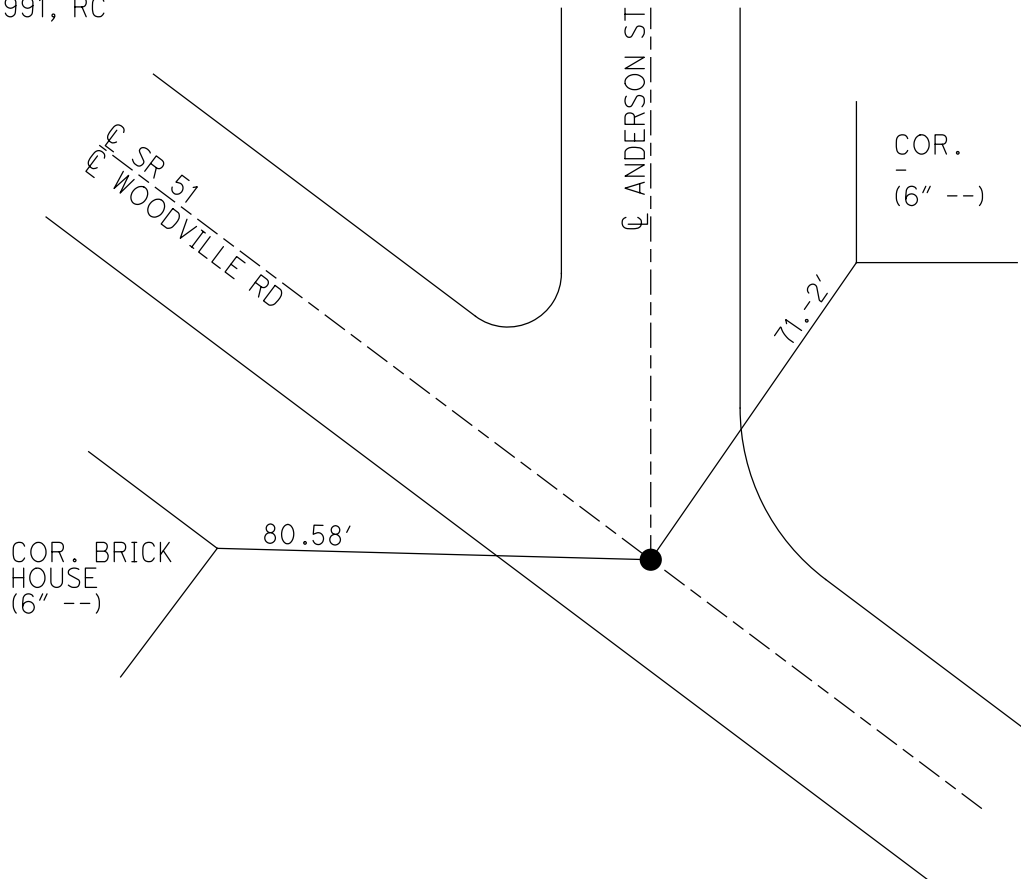
GEOID: _____

GRID: NORTHING: _____

EASTING: _____



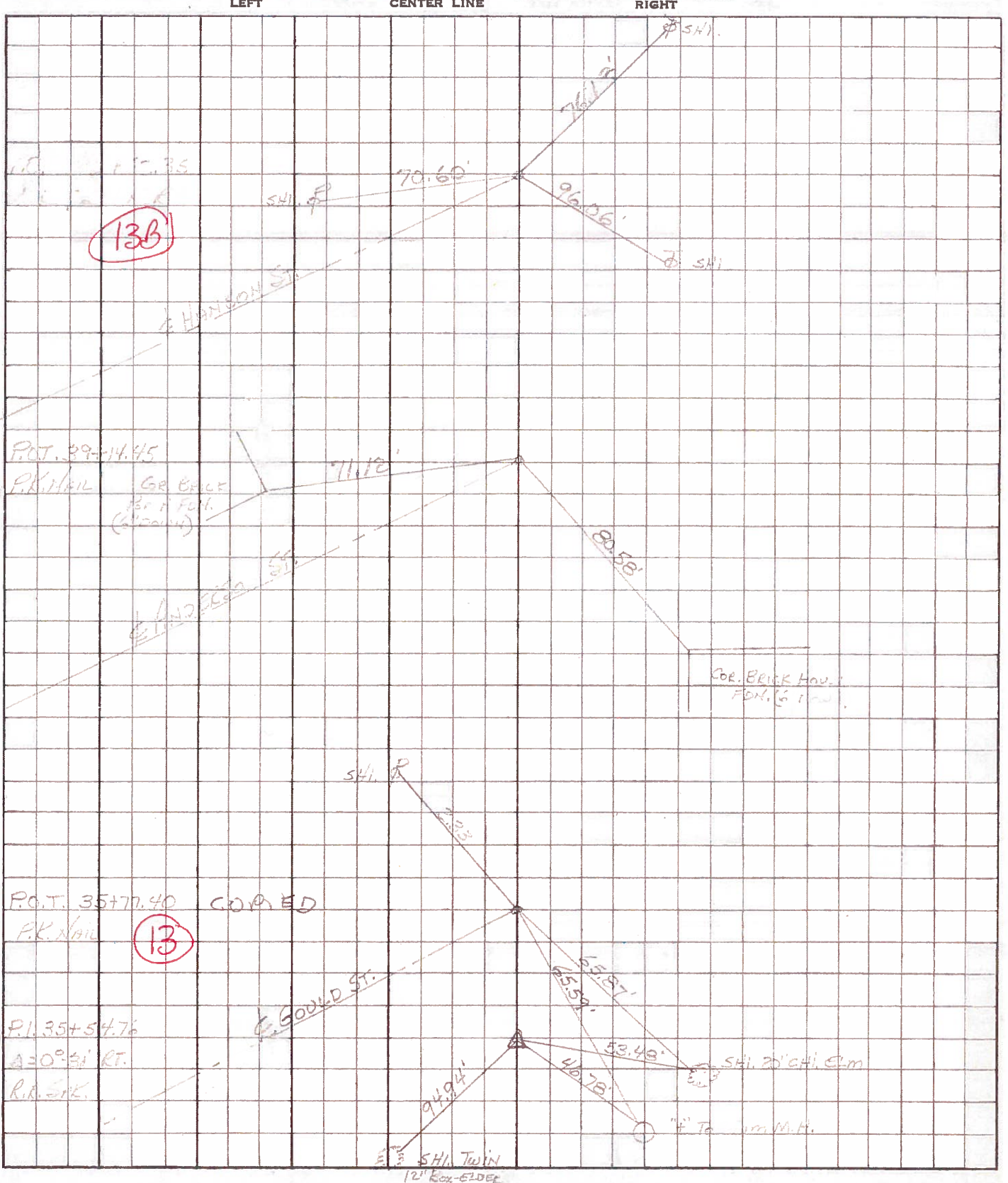
RECORD: P.O.T.
 STA 27+14.95
 FD P.K. NAIL
 5/19/69, BURNSIDE
 D.N.F.
 ALL TIES GONE
 1991, RC



COPYED

PERSONNEL	TITLE	PERSONNEL	TITLE	COUNTY	DATE
BURNSIDE		RIFE		WOOD	5-19-69
SMITH		MORRISON		S. R. 51	WEATHER Cloudy
BOWERS		SILVESTER	VAC.	SEC.	TEMP. +58°
HOLCOMBE					

DESCRIPTION & CONTROL TICS JOB NO. _____



PERSONNEL TITLE PERSONNEL TITLE

COUNTY Wood

DATE

S. R. # 120 51

WEATHER

SEC.

TEMP.

DESCRIPTION

LEFT

CENTER LINE

RIGHT

JOB NO.

Sta. 74+45.60
E Morgan St.
Conc. nail.

Shi. 14' Elm

(12)

62.27'

901

Shi. 15' Catalpa

58.70'

53.56'

Shi. 14' Elm

Sta. 79+57.82
E Gould St.
Conc. nail.

(13)

64.76'

51.65'

65.96'

Shi.

902

Shi. 10' maple

41.93'

Sta. 82+94.75
E Anderson St.
Conc. nail.

(13A)

61.38'

74.44'

6th brick cor. porch
step found.

903

Shi.

Sta. 86+32.45
E Hanson St.
conc. nail

(13B)

71.58'

35.89'

904

Shi.

57.02'