

O.D.O.T. DISTRICT 2 SURVEY OFFICE (USE ONLY)

PERSONNEL _____

REFERENCE NO. 13

SHEET 21 OF 22

NOTES BARNHISEL/HUSS DATE 4/18/03
 H.C. CANTERBURY WEATHER CLOUDY
 R.C. RYALL TEMP. 55°
GLASS/BEAMONT

ROUTE SR 51
 COUNTY WOOD
 TOWNSHIP NORTHWOOD
 SECTION 34

DWG BY NIESE PID _____

T 8 N R 12 E

TYPE MONUMENT P.K./WASHER

ON SURFACE - ~~BELOW~~ ON

OFFSET \odot PAVEMENT 0.5' \perp : RT

28.0' TO LT EDGE PAVEMENT

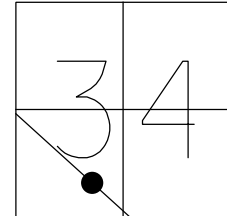
STATION: 191+22

HORZ. DATUM: _____

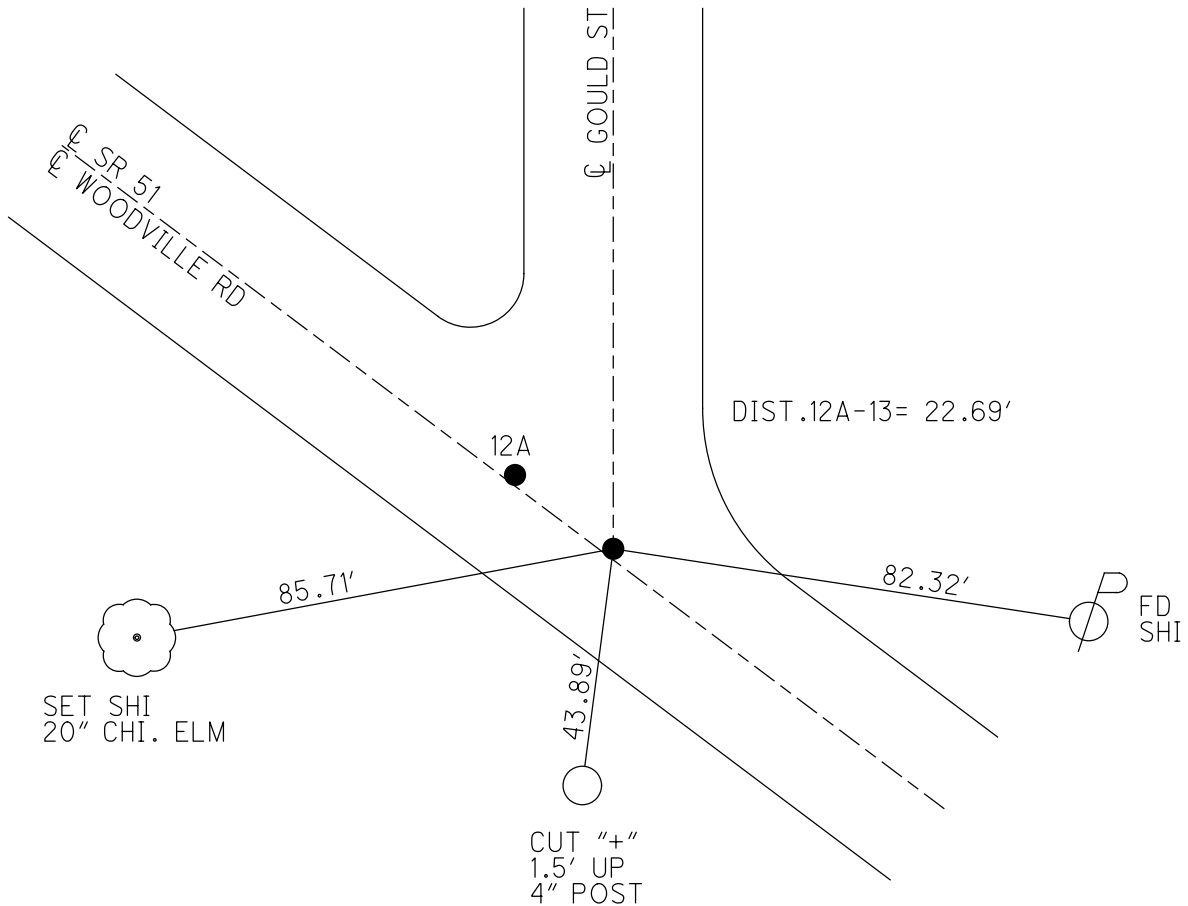
GEOID: _____

GRID: NORTHING: _____

EASTING: _____



RECORD: P.O.T.
 STA 191+22
 FD P.K./WASHER
 4/18/03, MB
 SET MAG/WASHER
 3/29/04, MB



O.D.O.T. DISTRICT 2 SURVEY OFFICE

PERSONNEL

REFERENCE NO. 13

SHEET 5 OF 15

NOTES BARNHISEL / HUSS

H.C. CANTERBURY

DATE 4-18-03

ROUTE S.R. # 51

R.C. RYALL

WEATHER CLOUDY

COUNTY WOOD

GLASS

TEMP. +55°

TOWNSHIP

BEAMONT

SECTION 34

T 8 N R 12 E

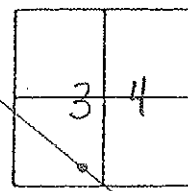
TYPE MONUMENT P.K. + WASHERS

ON SURFACE - BELOW SURFACE

~~LEFT - & PAV'T.~~ - RIGHT 0.5' RT

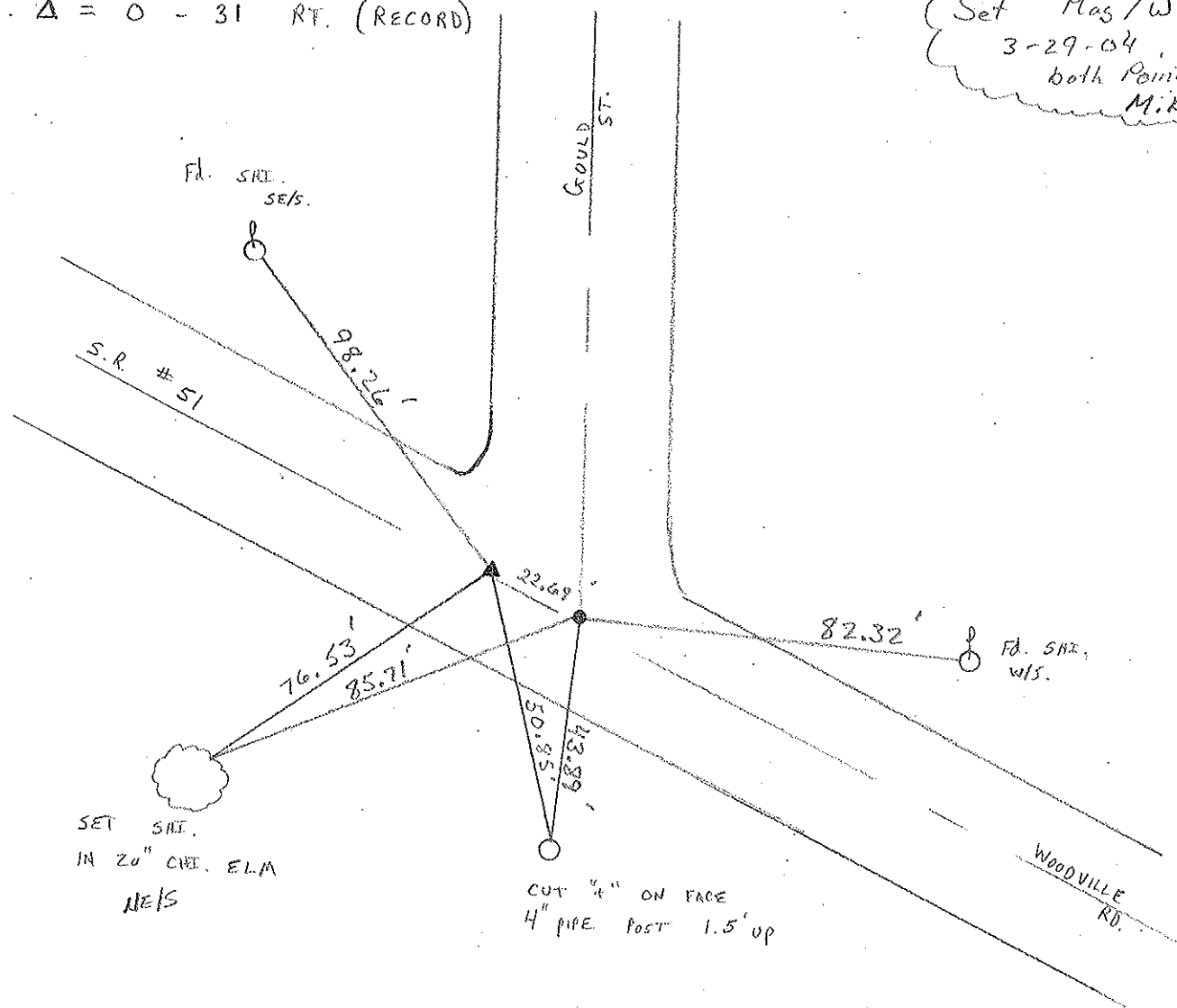
28' TO LT. EDGE PAVEMENT

S.L.M. 191+22 P.O.T. 191+44 P.I.



P.I. $\Delta = 0^\circ - 31'$ RT. (RECORD)

(Set Mas/W
3-29-04,
both Points
M.B.)



O.D.O.T. DISTRICT 2 SURVEY OFFICE

PERSONNEL

REFERENCE NO. 13

SHEET 5 OF 15

NOTES R. Cheney

H.C. R. BARBOUR

R.C. J. R. PPK

R. PEYMAN

DATE 11-6-91

WEATHER Cloudy

TEMP. 35°

ROUTE 51

COUNTY Wood

TOWNSHIP LAKE

SECTION 34

T 8 N R 12 E

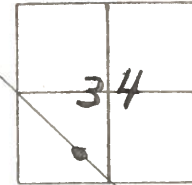
TYPE MONUMENT P. Ke Washers

ON SURFACE - ~~BELOW~~ yes

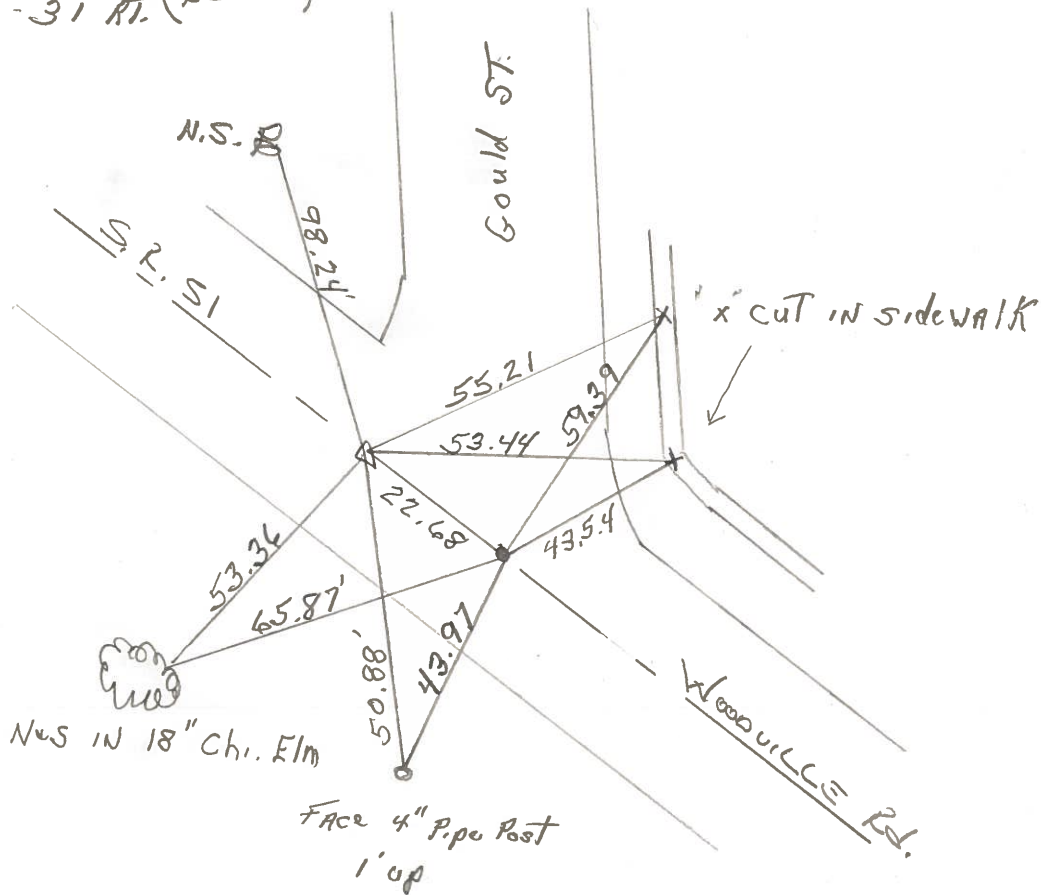
~~LEFT - & PAV'T. - RIGHT~~ yes

28' TO LT. EDGE PAVEMENT

S.L.M. 191+22 RGT 191+44 PI



PI $\Delta = 0^{\circ} - 31' RT.$ (RECORD)



County WOOD S.R. 51

Date 4-26-77

Township NORTH WOOD, OHIO

Weather CLEAR

Section 34

Temp. 54°

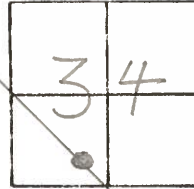
T8N, R12E

Personnel BURNSIDE

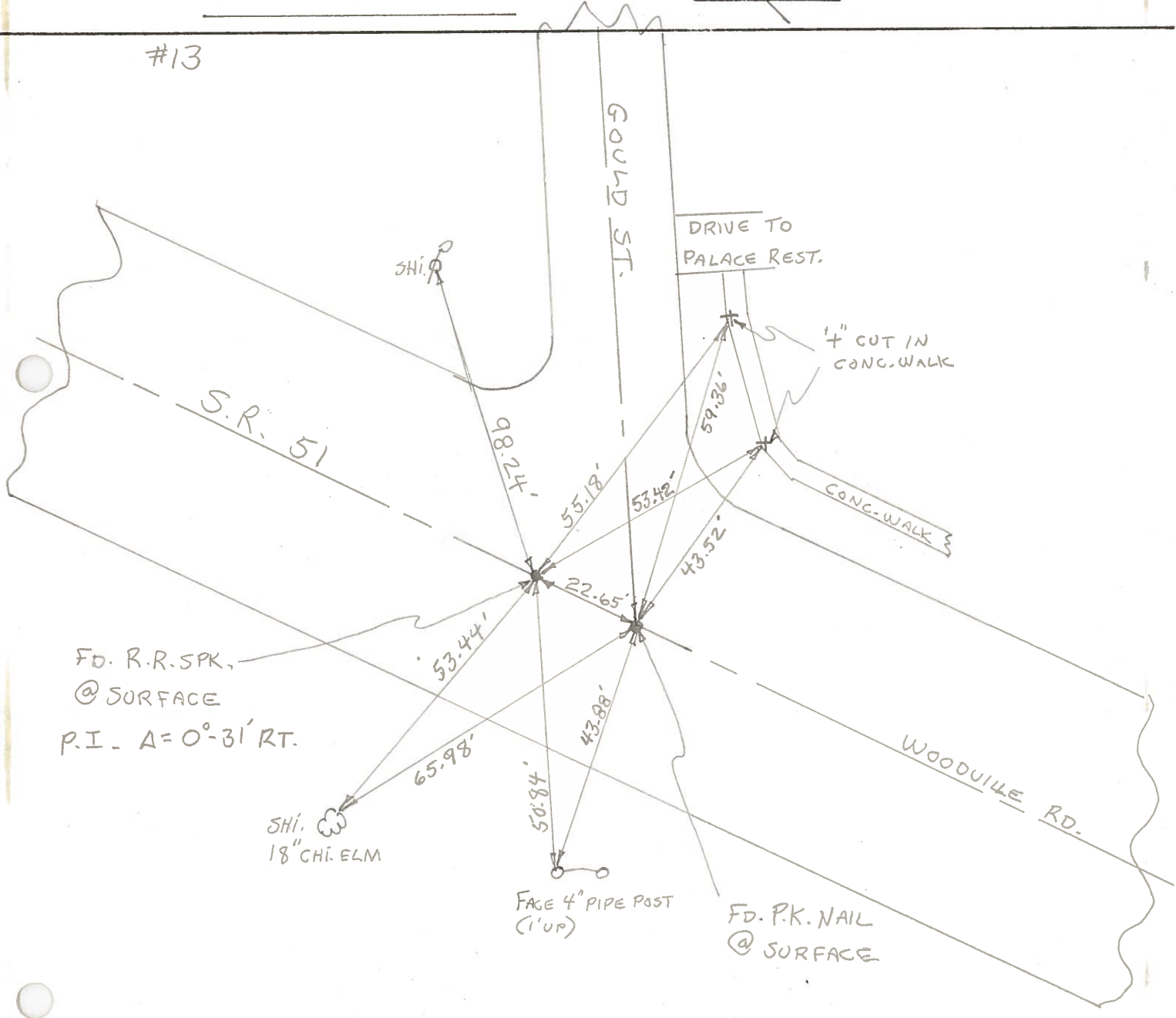
SMITH

BOWERS

MEAD

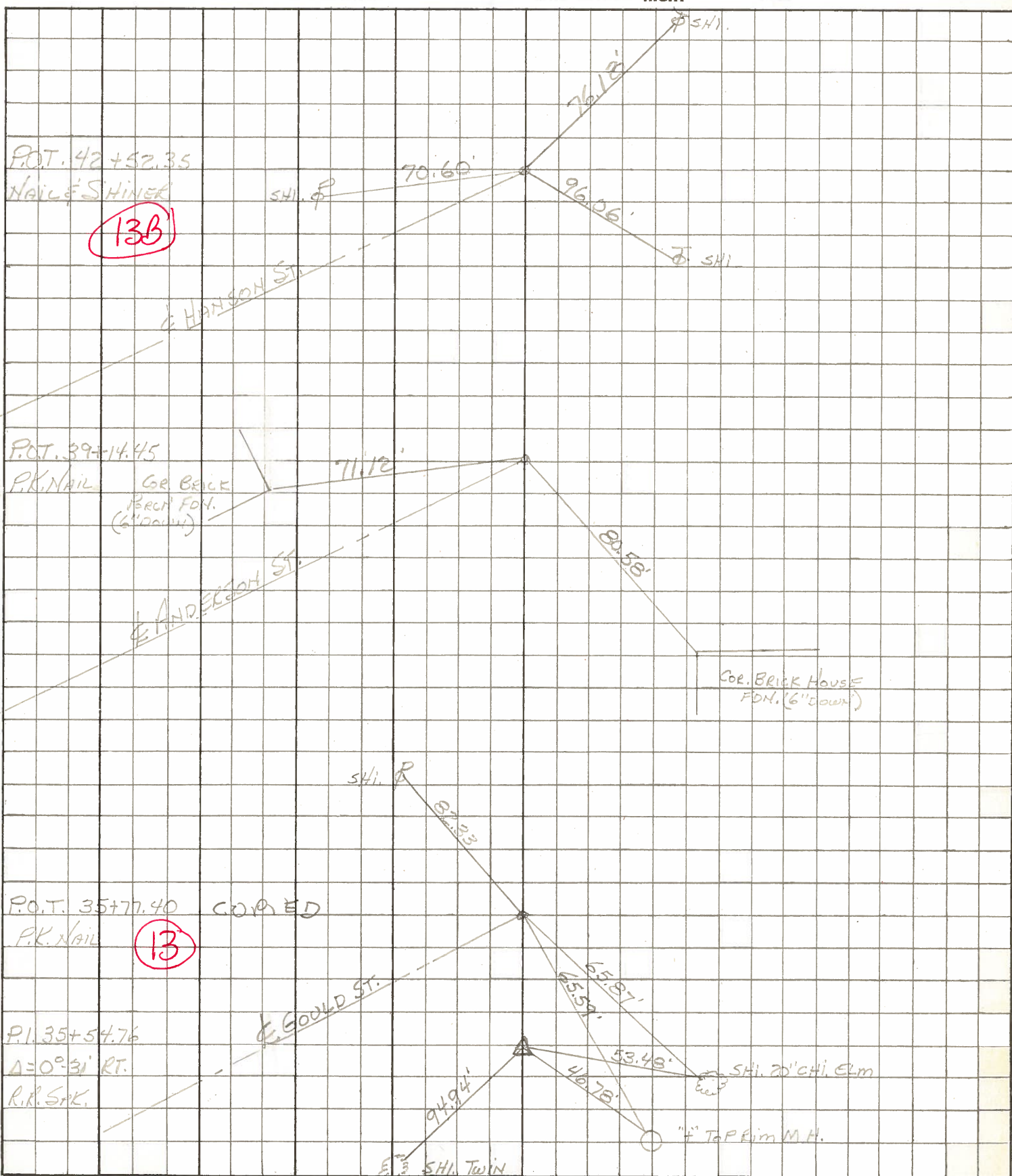


#13



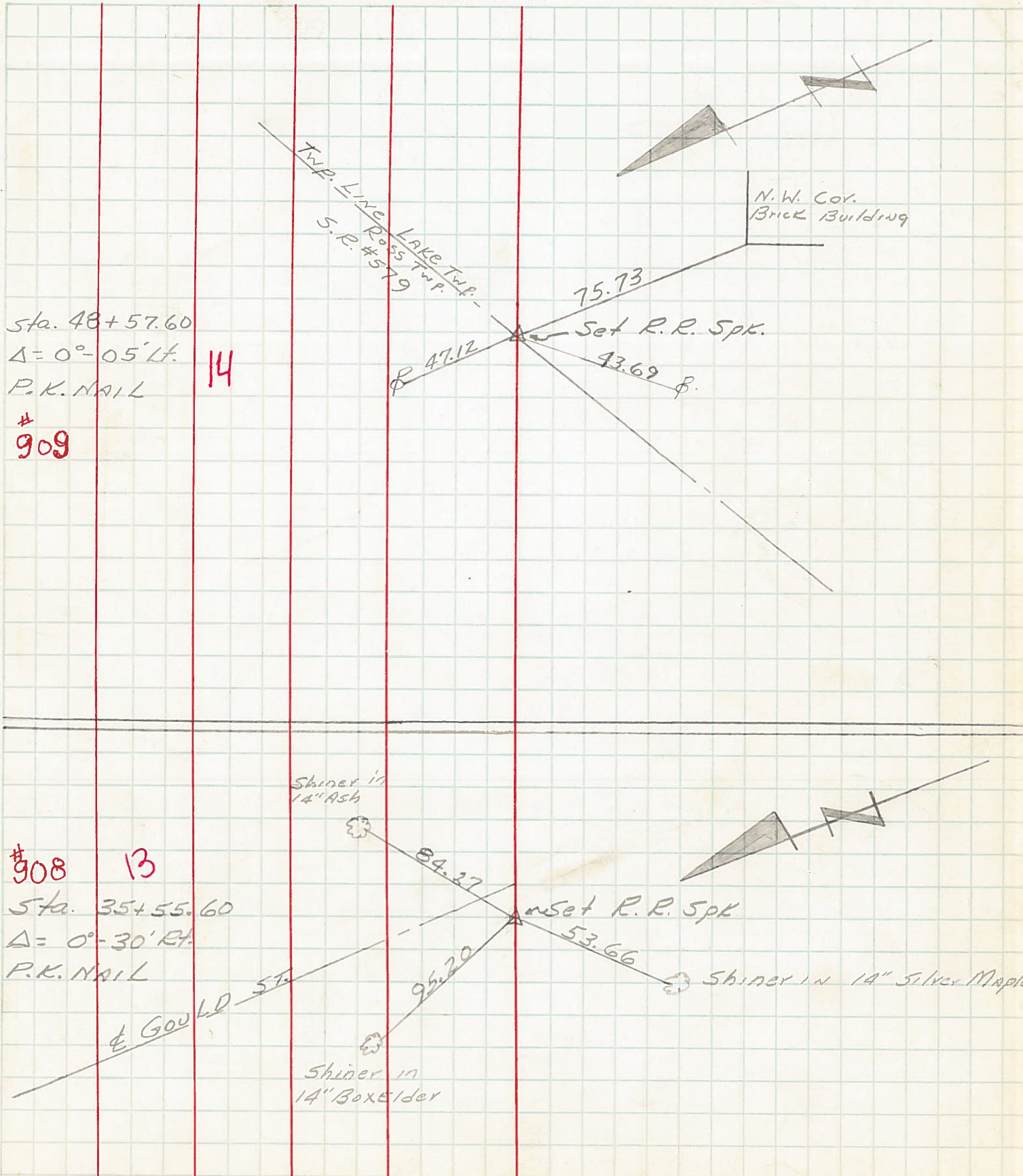
PERSONNEL	TITLE	PERSONNEL	TITLE	COUNTY	DATE
BURNSIDE		RIFE		WOOD	
SMITH				S. R. 51	WEATHER
BOWERS		MORRISON		SEC.	TEMP.
HOLCOMBE		SILVESTER	VAC.		

DESCRIPTION & CONTROL TIES JOB NO. _____



PERSONNEL	TITLE	PERSONNEL	TITLE	COUNTY	DATE	WEATHER	TEMP.
SWORDEN	Notes	GARNO		Wood	4-19-60	CLEAR	
HOLCOMBE	T			S. R. #51			
SAGE				SEC. Woodville Road			
JAMISON							

DESCRIPTION Control Points LEFT CENTER LINE RIGHT JOB NO.



PERSONNEL TITLE PERSONNEL TITLE

COUNTY Wood

DATE

S. R. # 120 51

WEATHER

SEC.

TEMP.

DESCRIPTION

LEFT

CENTER LINE

RIGHT

JOB NO.

Sta. 74+45.60
E Morgan St.
Conc. nail.

Shi. 14' Elm

(12)

901

Shi. 15" Catalpa

Shi. 14' Elm

62.27'

58.70'

53.56'

Sta. 79+57.82
E Gould St.
Conc. nail.

(13)

902

Shi. 10' Maple

64.76'

51.65'

65.96'

Shi.

Sta. 82+94.75
E Anderson St.
Conc. nail.

(13A)

903

Shi.

41.93'

61.38'

74.44'

6th brick cor. porch
step found.

Sta. 86+32.45
E Hanson St.
conc. nail

(13B)

904

Shi.

71.58'

35.89'

57.02'

Shi.

PERSONNEL TITLE PERSONNEL TITLE

COUNTY Wood DATE 8-20-50

S. R. #120 S.R. #51 WEATHER

SEC. B-1 & B-2 TEMP.

DESCRIPTION LEFT CENTER LINE RIGHT JOB NO.

DESCRIPTION	LEFT	CENTER LINE	RIGHT	JOB NO.
Sta. 53+00.65 P.L. Hirzel Rd.			N. to shiner in P.P. 30.52 N.E. to shiner in P.P. 75.58' S. to shiner in T.P. 34.33	

#291

Sta. 54+56.90 Kruger Rd.			N.W. to shiner in P.P. 90.30 E. to shiner in P.P. 31.37' S.S.W. to shiner in T.P. 35.45'	
-----------------------------	--	--	--	--

#292

Sta. 79+35.90 Gould St.			N.W. to shiner in P.P. 59.55 N.E. to shiner in P.P. 35.07' S.W. to shiner in T.P. 54.07'	
----------------------------	--	--	--	--

⑬ #293

Sta. 92+37.50 Williston Rd.			N. to shiner in P.P. 46.38' N. to shiner in T.P. 48.43' N.E. to shiner in P.P. 78.84 W. to x-on Nicor. pump island 41.65' N.W. cor. feed store (frame) 65.15'	
--------------------------------	--	--	---	--

#294

Sta. 108+01.15 Owens Rd.			N.E. to shiner in P.P. 29.06' E. to shiner in 15' maple 83.34' S.S.W. to shiner in P.P. 34.89 N.E. to shiner in 8" cherry 70.62' N.W. to shiner in 15" Elm 45.80' S. to shiner in 12" catalpa 84.94'	
-----------------------------	--	--	---	--

⑮ #295

PERSONNEL TITLE PERSONNEL TITLE

COUNTY Wood

DATE

S. R. # 120 51

WEATHER

SEC.

TEMP.

DESCRIPTION

LEFT

CENTER LINE

RIGHT

JOB NO.

Sta. 74+45.60
E Morgan St.
Conc. nail.

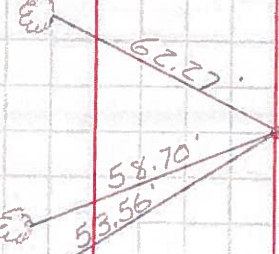
Shi. 14' Elm

(12)

901

Shi. 15" Catalpa

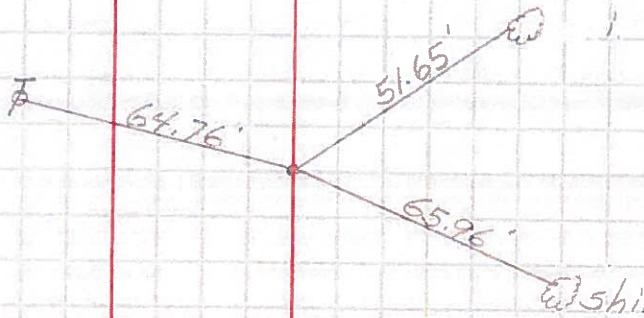
Shi. 14' Elm



Sta. 79+57.82
E Gould St.
Conc. nail.

(13)

902



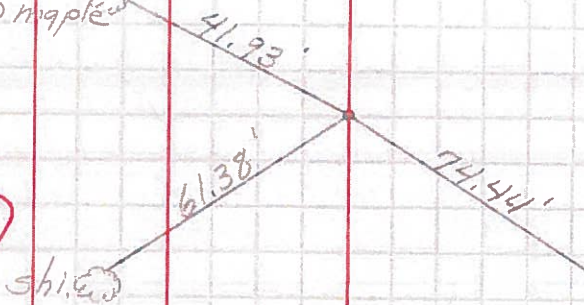
Sta. 82+94.75
E Anderson St.
Conc. nail.

(13A)

903

Shi. 10' maple

Shi.



6th brick cor. porch
step found.

Sta. 86+32.45
E Hanson St.
conc. nail

(13B)

904

Shi. ⚡

Shi. ⚡

