

O.D.O.T. DISTRICT 2 SURVEY OFFICE (USE ONLY)

PERSONNEL _____

REFERENCE NO. 12 A

SHEET 20 OF 22

NOTES BARNHISEL/HUSS

DATE 4/18/03

ROUTE SR 51

H.C. CANTERBURY

WEATHER CLOUDY

COUNTY WOOD

R.C. RYALL
GLASS/BEAMONT

TEMP. 55°

TOWNSHIP NORTHWOOD

SECTION 34

DWG BY NIESE PID _____

T 8 N R 12 E

TYPE MONUMENT P.K./WASHER

ON SURFACE - ~~BELOW~~ ON

OFFSET 0.5' LT : RT

28.0' TO LT EDGE PAVEMENT

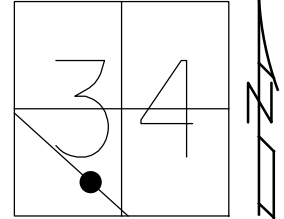
STATION: 191+44

HORZ.DATUM: _____

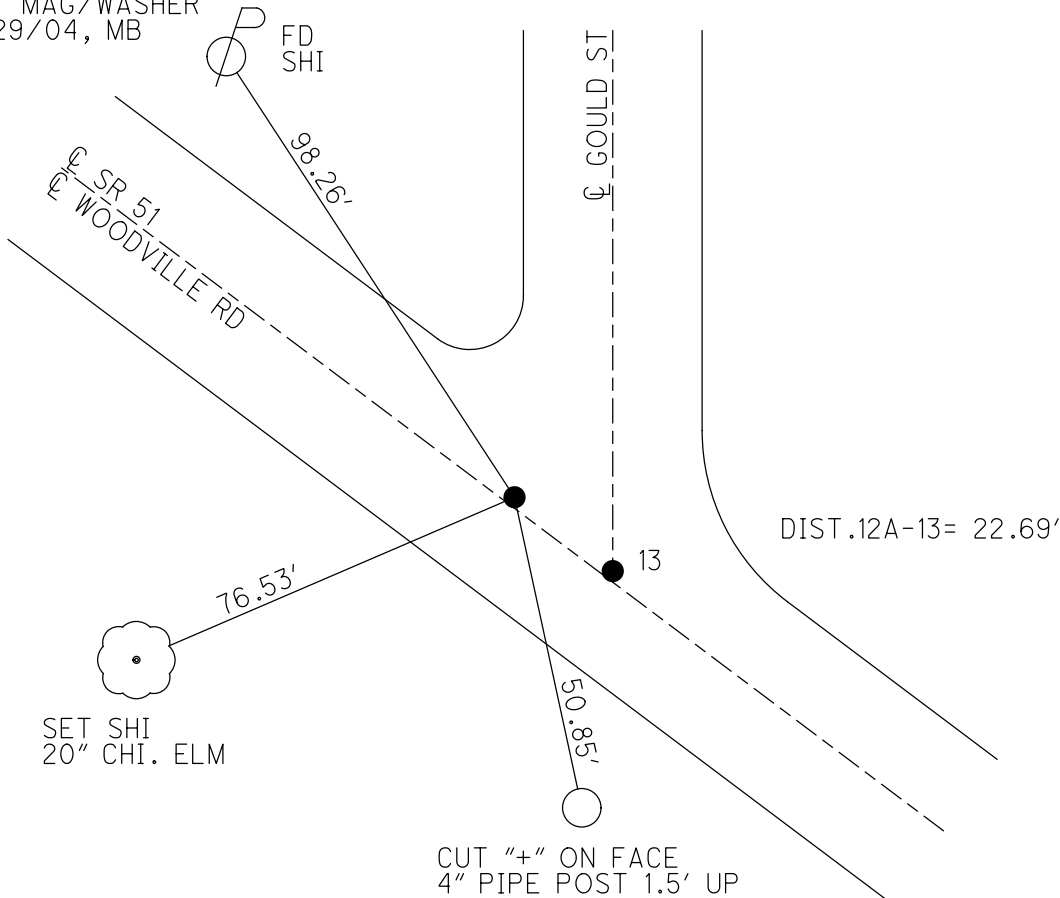
GEOID: _____

GRID: NORTHING: _____

EASTING: _____



RECORD: P.I.
STA 194+44
 $\Delta = 00^{\circ}31'00''$ RT
FD P.K./WASHER
4/18/03, MB
SET MAG/WASHER
3/29/04, MB



O.D.O.T. DISTRICT 2 SURVEY OFFICE

PERSONNEL

REFERENCE NO. 13

SHEET 5 OF 15

NOTES BARNHISEL / HUSS

H.C. CANTERBURY

DATE 4-18-03

ROUTE S.R. # 51

R.C. RYALL

WEATHER CLOUDY

COUNTY WOOD

GLASS

TEMP. +55°

TOWNSHIP _____

BEAMONT

SECTION 34

T 8 N R 12 E

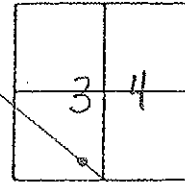
TYPE MONUMENT P.K. + WASHERS

ON SURFACE - ~~BELOW~~ SURFACE

~~LEFT - & PAV'T.~~ - RIGHT 0.5' RT

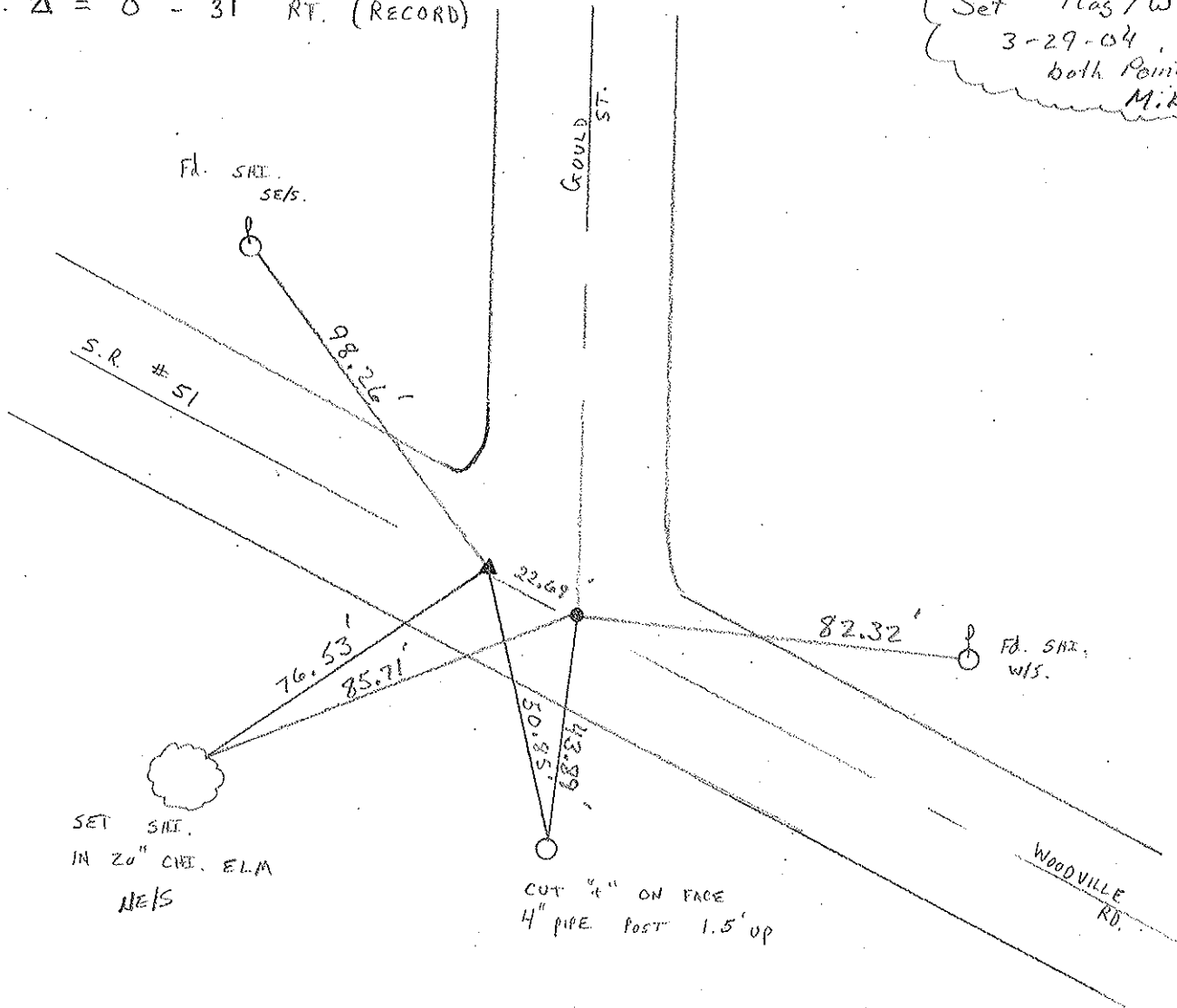
28' TO LT. EDGE PAVEMENT

S.L.M. 191+22 P.O.T. 191+44 P.I.



P.I. $\Delta = 0^\circ - 31'$ RT. (RECORD)

(Set Mas/W
3-29-04,
both Points
M.B.)



CUT "4" ON FACE
4" PIPE POST 1.5' UP

O.D.O.T. DISTRICT 2 SURVEY OFFICE

PERSONNEL

REFERENCE NO. 13

SHEET 5 OF 15

NOTES R. Cheney

H.C. R. BARBOUR

R.C. J. B. ppk

R. Feyman

DATE 11-6-91

WEATHER Cloudy

TEMP. 35°

ROUTE 51

COUNTY Wood

TOWNSHIP LAKE

SECTION 34

T 8 N R 12 E

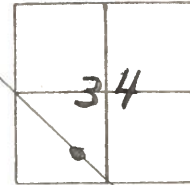
TYPE MONUMENT P. Ke Washers

ON SURFACE - ~~BELOW~~ yes

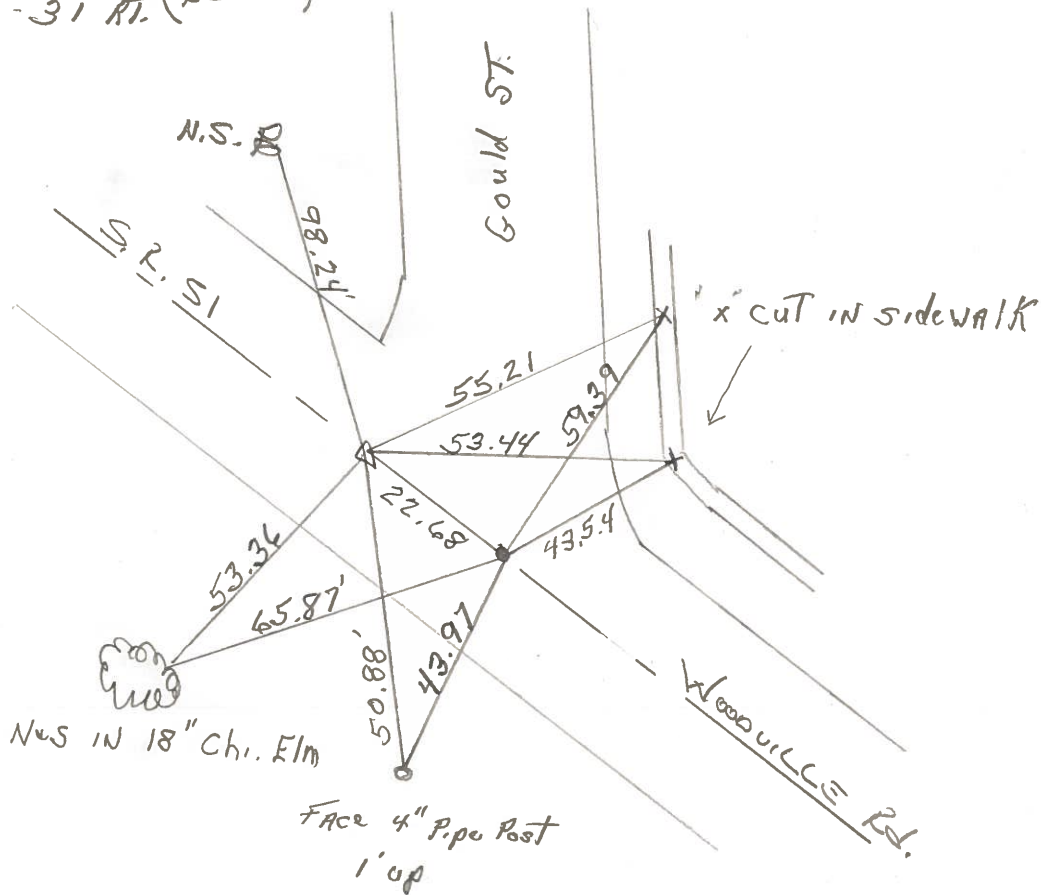
~~LEFT - & PAV'T. - RIGHT~~ yes

28' TO LT. EDGE PAVEMENT

S.L.M. 191+22 RGT 191+44 PI



PI $\Delta = 0^{\circ} - 31' RT.$ (RECORD)



County WOOD S.R. 51

Date 4-26-77

Township NORTH WOOD, OHIO

Weather CLEAR

Section 34

Temp. 54°

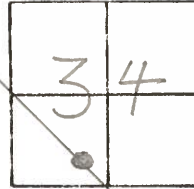
T8N, R12E

Personnel BURNSIDE

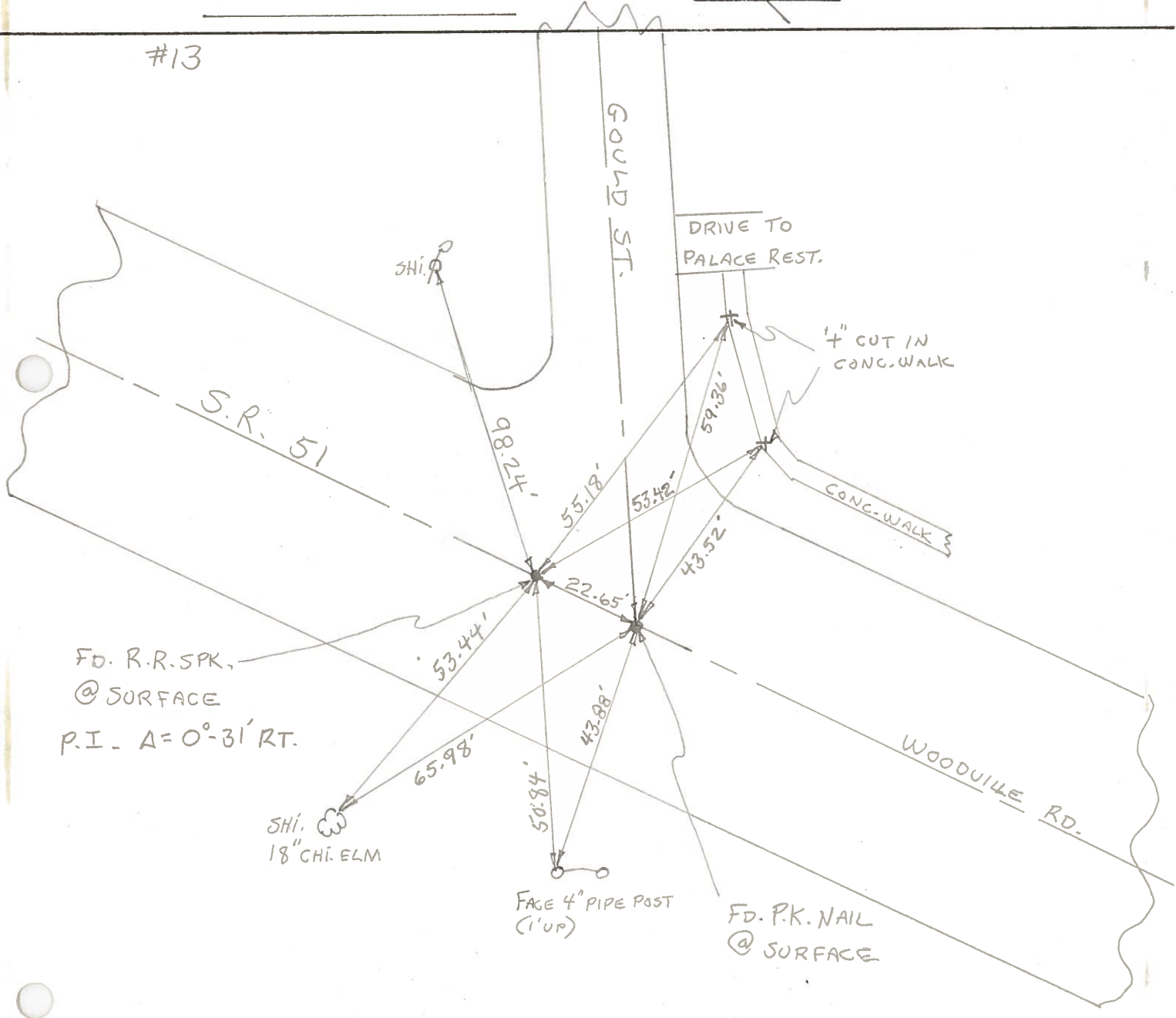
SMITH

BOWERS

MEAD



#13



FD. R.R. SPK.
@ SURFACE
P.I. - A = 0°-31' RT.

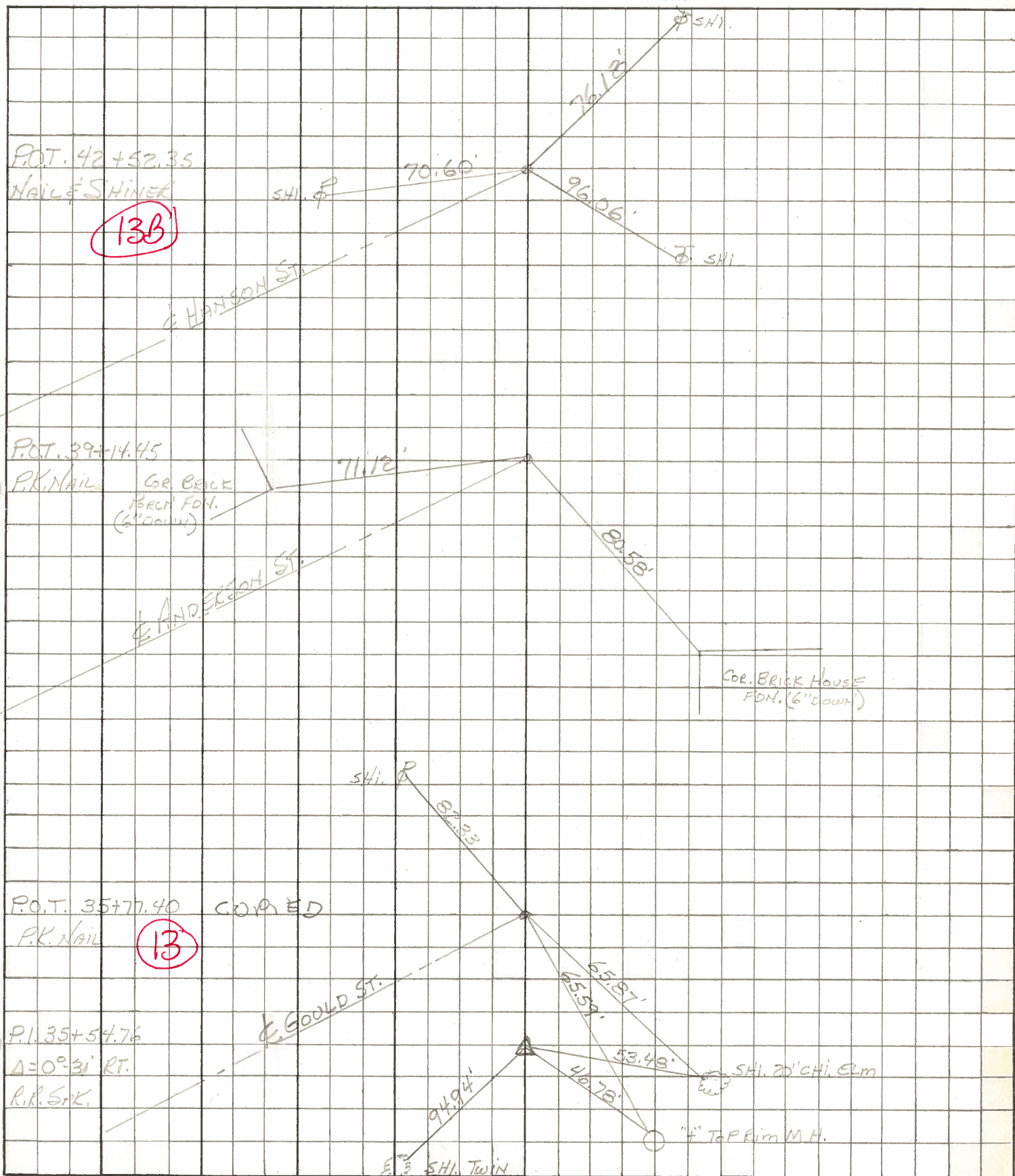
SHI. 18" CHI. ELM

FACE 4" PIPE POST
(1' UP)

FD. P.K. NAIL
@ SURFACE

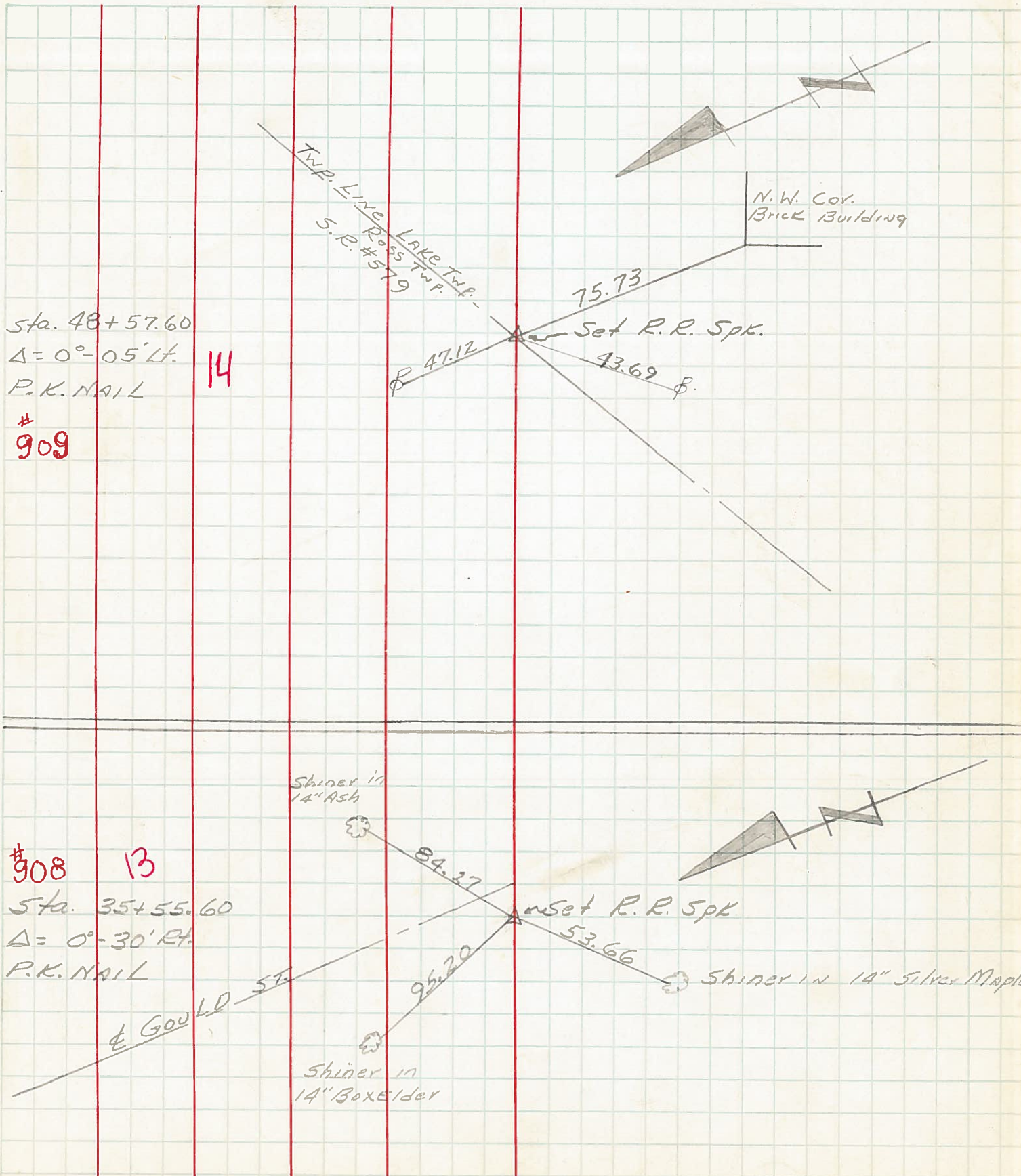
PERSONNEL	TITLE	PERSONNEL	TITLE	COUNTY	DATE
BURNSIDE		RIFE		WOOD	
SMITH				S. R. 51	WEATHER
BOWERS		MORRISON		SEC.	TEMP.
HOLCOMBE		SILVESTER	VAC.		

DESCRIPTION & CONTROL TIES JOB NO. _____



PERSONNEL	TITLE	PERSONNEL	TITLE	COUNTY	DATE	WEATHER	TEMP.
SWORDEN	Notes	GARNO		Wood	4-19-60	CLEAR	
HOLCOMBE	T			S. R. #51			
SAGE				SEC. Woodville Road			
JAMISON							

DESCRIPTION Control Points LEFT CENTER LINE RIGHT JOB NO.



PERSONNEL TITLE PERSONNEL TITLE

COUNTY Wood

DATE

S. R. # 120 51

WEATHER

SEC.

TEMP.

DESCRIPTION

LEFT

CENTER LINE

RIGHT

JOB NO.

Sta. 74+45.60
E Morgan St.
Conc. nail.

(12)

901

Shi. 15" Catalpa

Shi. 14' Elm

Shi. 14' Elm

62.27'

58.70'

53.56'

Sta. 79+57.82
E Gould St.
Conc. nail.

(13)

902

Shi. 10' maple

64.76'

51.65'

65.96'

Shi.

Sta. 82+94.75
E Anderson St.
Conc. nail.

(13A)

903

Shi.

41.93'

61.38'

74.44'

6th brick cor. porch
step found.

Sta. 86+32.45
E Hanson St.
conc. nail

(13B)

904

Shi.

71.58'

35.89'

57.02'

Shi.

PERSONNEL TITLE PERSONNEL TITLE

COUNTY Wood DATE 8-20-50

S. R. #120 S.R. #51 WEATHER

SEC. B-1 & B-2 TEMP.

DESCRIPTION

LEFT

CENTER LINE

RIGHT

JOB NO.

Sta. 53+00.65

P.L.

Hirzel Rd.

#291

N. to shiner in P.P.

30.52

N.E. to shiner in P.P.

75.58'

S. to shiner in T.P.

34.33

Sta. 54+56.90

Kruger Rd.

#292

N.W. to shiner in P.P.

90.30

E. to shiner in P.P.

31.37'

S.S.W. to shiner in T.P.

35.45'

Sta. 79+35.90

Gould St.

(13)

#293

N.W. to shiner in P.P.

59.55

N.E. to shiner in P.P.

35.07'

S.W. to shiner in T.P.

54.07'

Sta. 92+37.50

Williston Rd.

#294

N. to shiner in P.P.

46.38'

N. to shiner in T.P.

48.43'

N.E. to shiner in P.P.

78.84

W. to x-on Nicor. pump island

41.65'

N.W. cor. feed store (frame)

65.15'

Sta. 108+01.15

Owens Rd.

(15)

#295

N.E. to shiner in P.P.

29.06'

E. to shiner in 15' maple

83.34'

S.S.W. to shiner in P.P.

34.89

N.E. to shiner in 8" cherry

70.62'

N.W. to shiner in 15" Elm

45.80'

S. to shiner in 12" catalpa

84.94'

PERSONNEL TITLE PERSONNEL TITLE

COUNTY Wood

DATE

S. R. # 120 51

WEATHER

SEC.

TEMP.

DESCRIPTION

LEFT

CENTER LINE

RIGHT

JOB NO.

Sta. 74+45.60
E Morgan St.
Conc. nail.

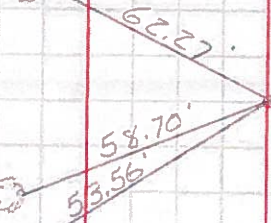
Shi. 14' Elm

(12)

901

Shi. 15" Catalpa

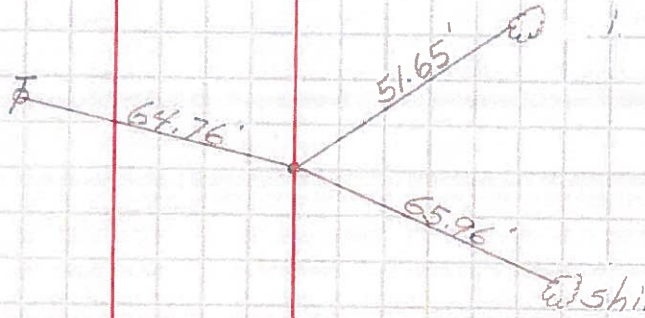
Shi. 14' Elm



Sta. 79+57.82
E Gould St.
Conc. nail.

(13)

902



Sta. 82+94.75
E Anderson St.
Conc. nail.

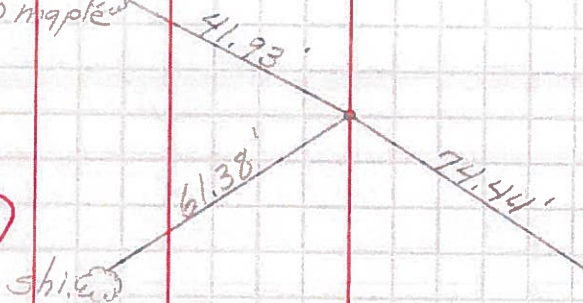
(13A)

903

Shi. 10' maple

Shi.

6th brick cor. porch step found.



Sta. 86+32.45
E Hanson St.
conc. nail

(13B)

904

Shi. ⚡

Shi. ⚡

