

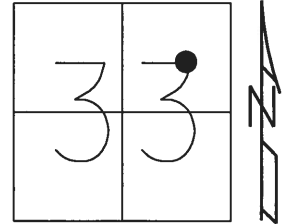
O.D.O.T. DISTRICT 2 SURVEY OFFICE (USE ONLY)

PERSONNEL \_\_\_\_\_ REFERENCE NO. 4 SHEET 4 OF 13

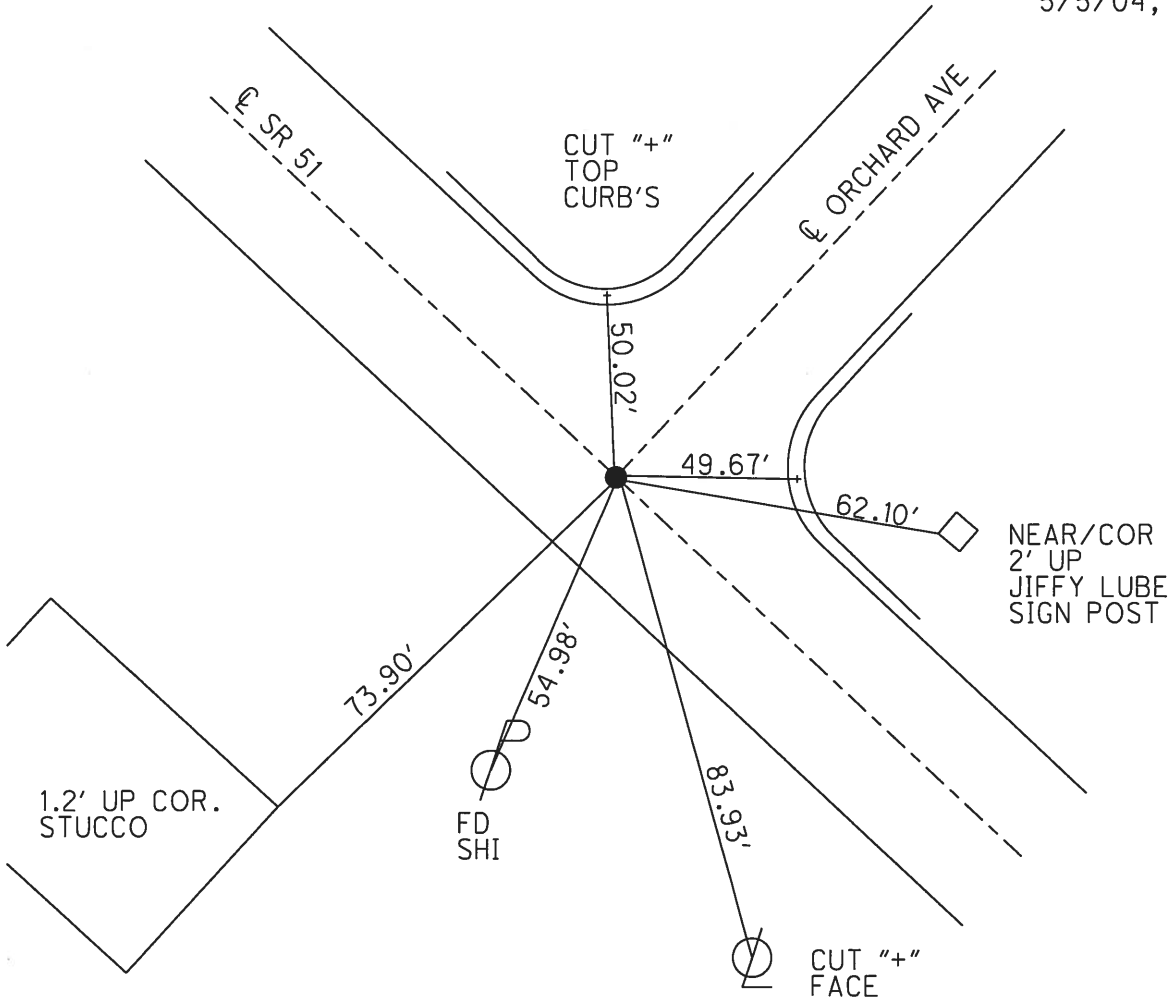
NOTES BARNHEISEL DATE 4/21/03 ROUTE SR 51  
 H.C. BARNHEISEL WEATHER CLOUDY COUNTY WOOD  
 R.C. RYALL TEMP. 55° TOWNSHIP NORTHWOOD  
BRUMBAUGH SECTION 33  
GLASS, CANTERBURY, HUSS T 8 N R 12 E

TYPE MONUMENT P.K./WASHER  
 ON SURFACE - ~~BELOW~~ ON  
 LEFT - ☉ PAV'T - RIGHT ON  
28' TO LT EDGE PAVEMENT  
 S.L.M. 249+59

Grid: Northing: \_\_\_\_\_ Easting: \_\_\_\_\_



RECORD:  
 FD P.K./WASHER  
 4/21/03, MB  
 SET MAG/WASHER  
 5/5/04, MB



# O.D.O.T. DISTRICT 2 SURVEY OFFICE

PERSONNEL

REFERENCE NO. 4

SHEET 13 OF 15

NOTES BARNHISEL

H.C. BARNHISEL

R.C. RYALL

BRUMBAUGH

GLASS

DRAWN: CANTERBURY / HUSS

DATE 4-21-03

WEATHER CLOUDY

TEMP. + 55 °

ROUTE S.R. # 51

COUNTY Wood

TOWNSHIP \_\_\_\_\_

SECTION 33

T 8 N R 12 E

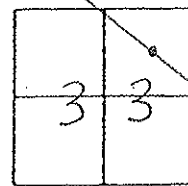
TYPE MONUMENT P.R. + WASHER

ON SURFACE - ~~BELOW~~ SURFACE

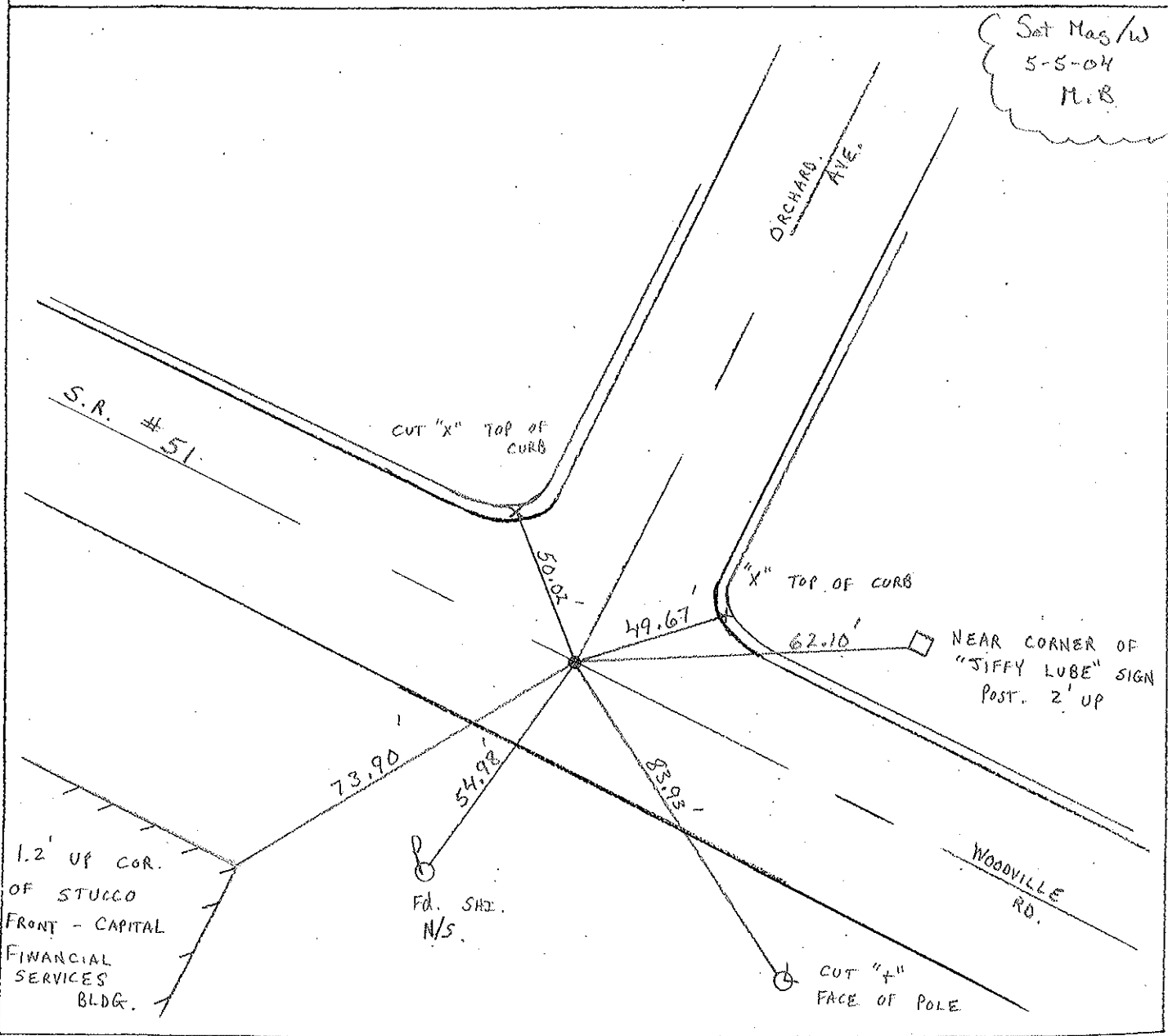
~~LEFT - & PAV'T. - RIGHT~~ ON &

28' TO RT EDGE PAVEMENT

S.L.M. Z49 + 59



Set Mag/w  
5-5-04  
M.B.



# O.D.O.T. DISTRICT 2 SURVEY OFFICE

PERSONNEL

REFERENCE NO. 4

SHEET 13 OF 15

NOTES P. Cheney

H.C. R. Barbour

R.C. J. Ripple

R. Geyman

DATE 11-6-91

WEATHER Cloudy

TEMP. 32°

ROUTE 51

COUNTY Wood

TOWNSHIP \_\_\_\_\_

SECTION 33

T8 N R 12 E

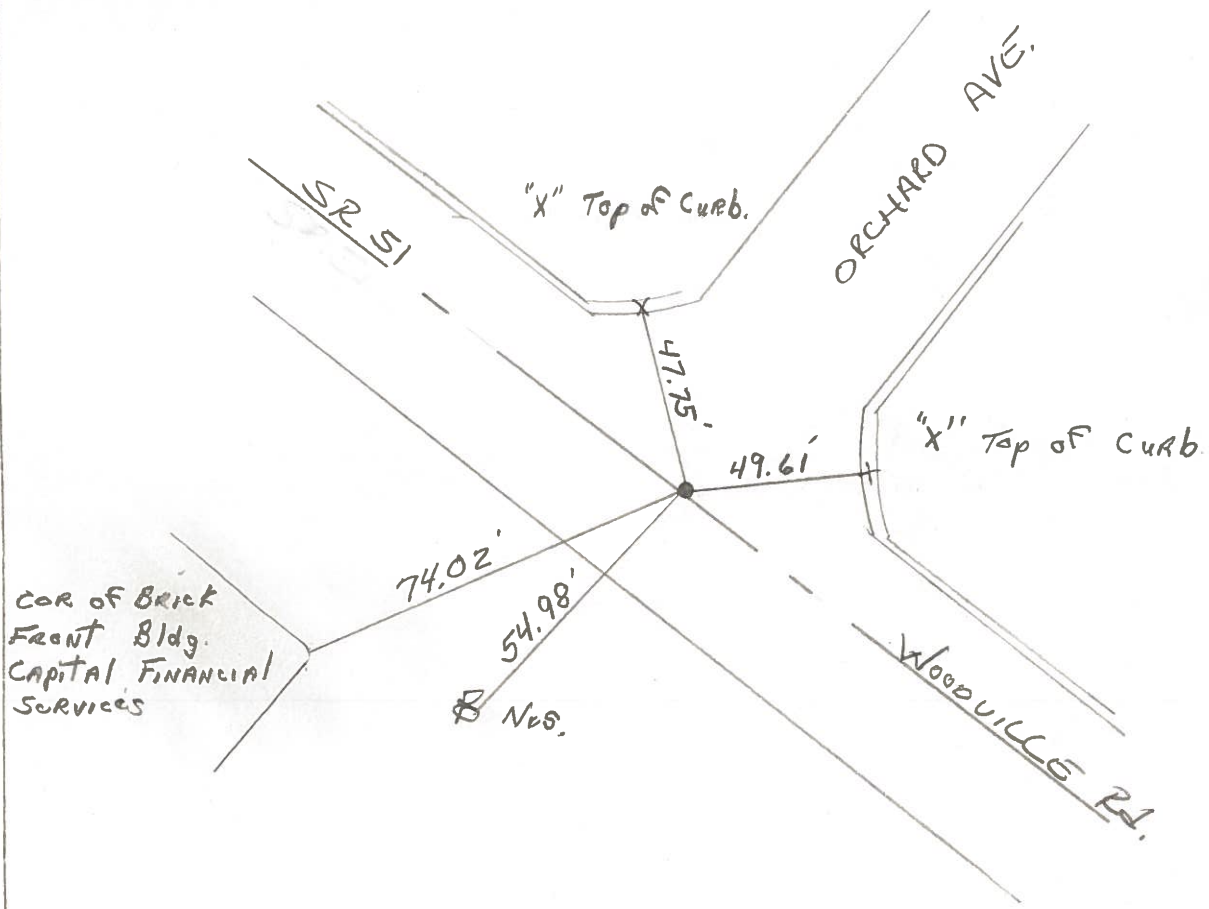
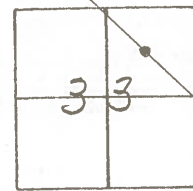
TYPE MONUMENT P.K. + WASHER

~~ON SURFACE~~ - BELOW P.K. = WASHER

~~LEFT - & PAV'T. - RIGHT~~ YES

TO EDGE PAVEMENT

S.L.M. 249+59



County WOOD S.R. 51

Date 4-1-77

Township NORTHWOOD, O.

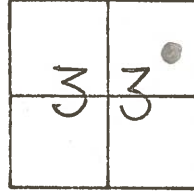
Weather CLOUDY

Section 33

Temp. 40°

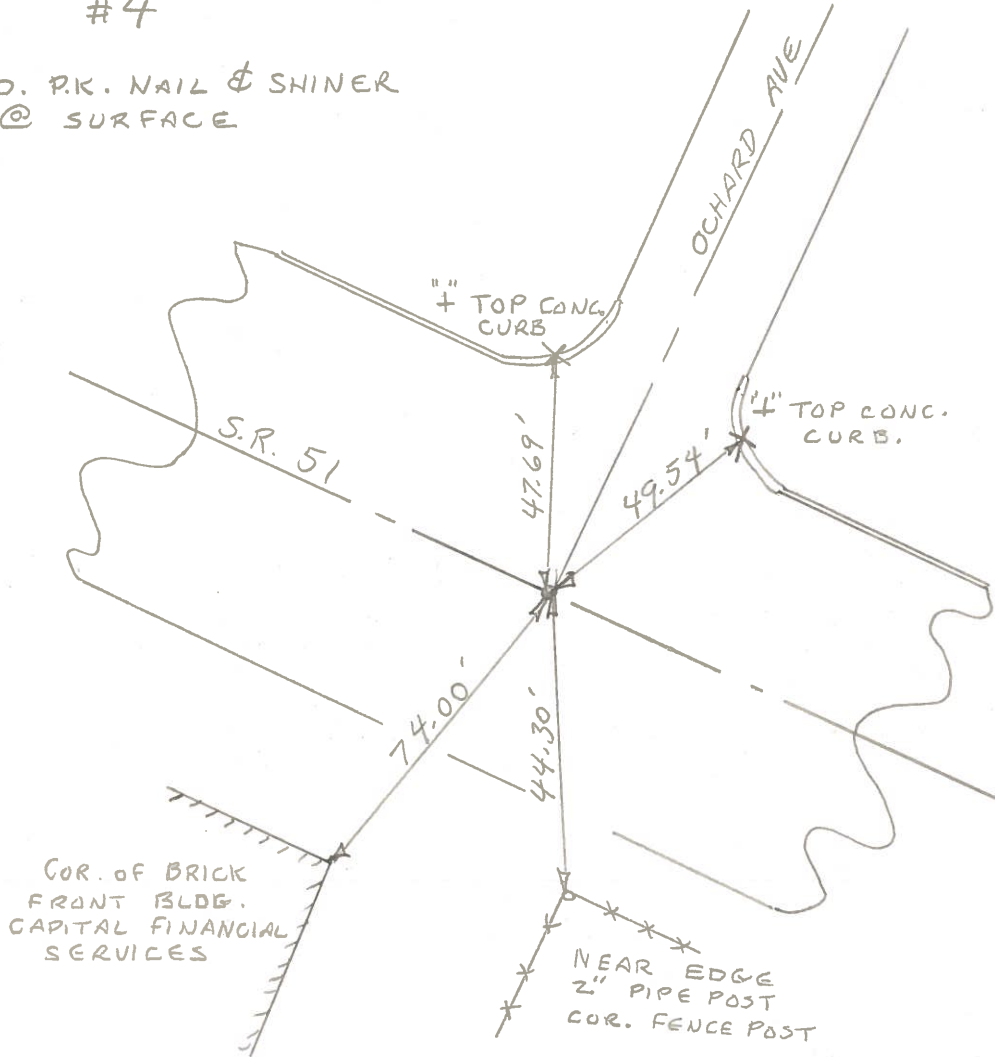
T8N, R12E

Personnel BURNSIDE  
SMITH  
BOWERS  
MEAD



#4

FD. P.K. NAIL & SHINER @ SURFACE



PERSONNEL TITLE PERSONNEL TITLE

COUNTY Wood

DATE 7-14-50

S. R. #120 51

Schneider-9-5-61

WEATHER

SEC.

TEMP.

DESCRIPTION Woodville Rd.

LEFT

CENTER LINE

RIGHT

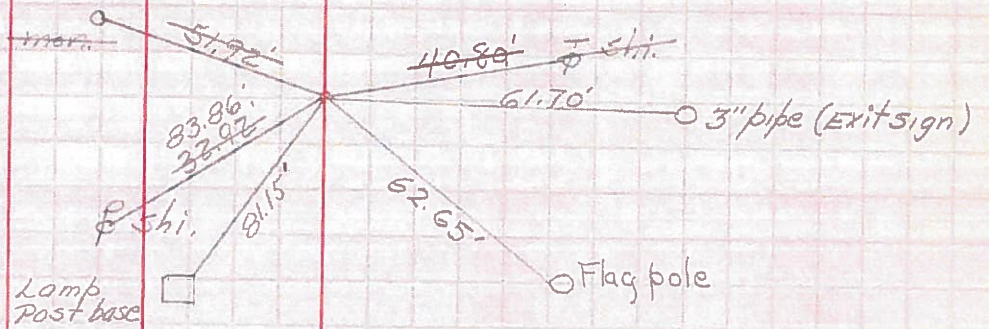
JOB NO.

(Measurements not plumb)

Sta. 11+22.12  
Curtice Rd.  
Tack fd. P.I.  
BRASS MON.

2

#287

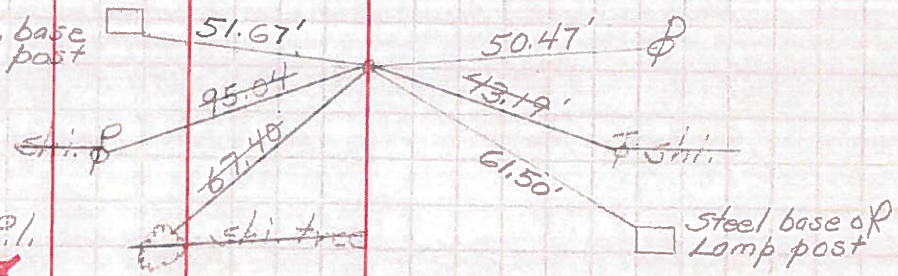


Conc. base  
Lamp post

Sta. 17+29.13  
Joel Ave.  
Masonry tack on P.I.  
BRASS MON.

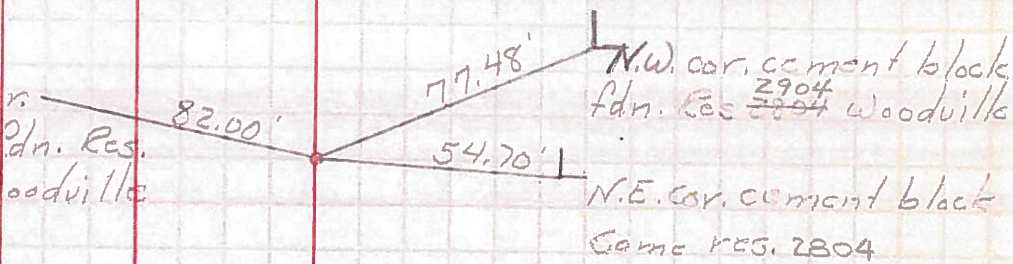
3

#288



Sta. 18+74.44  
Leland Ave.  
Set P.R. Spk.

S.W. cor.  
brick fdn. Res.  
2801 woodville



Sta. 21+30.42  
Orchard Ave.  
Set P.R. Spk.

#881

4

